



**Sarah MacNeilage Patey, DBA Diver for Hire, Epping, NH**  
[diverforhirenh@gmail.com](mailto:diverforhirenh@gmail.com)

**Jamie Burleigh, DBA LTD Diving, Nottingham, NH**  
[ltddivingnh@gmail.com](mailto:ltddivingnh@gmail.com)

## **September 14, 2025**

### **Extraction Report**

Location: Country Pond, Newton/Kingston, NH

Date(s): September 11, 2025, September 12, 2025

Exotic/Invasive Plant(s): Brittle naiad

Diver(s): Sarah MacNeilage Patey, Jamie Burleigh

Support Crew: None

Total amount extracted (in gallons): 23.50

Total time worked (in hours): 13.0

Detailed report includes Extraction Narrative, Extraction Log, Map, Photos

#### **Narrative:**

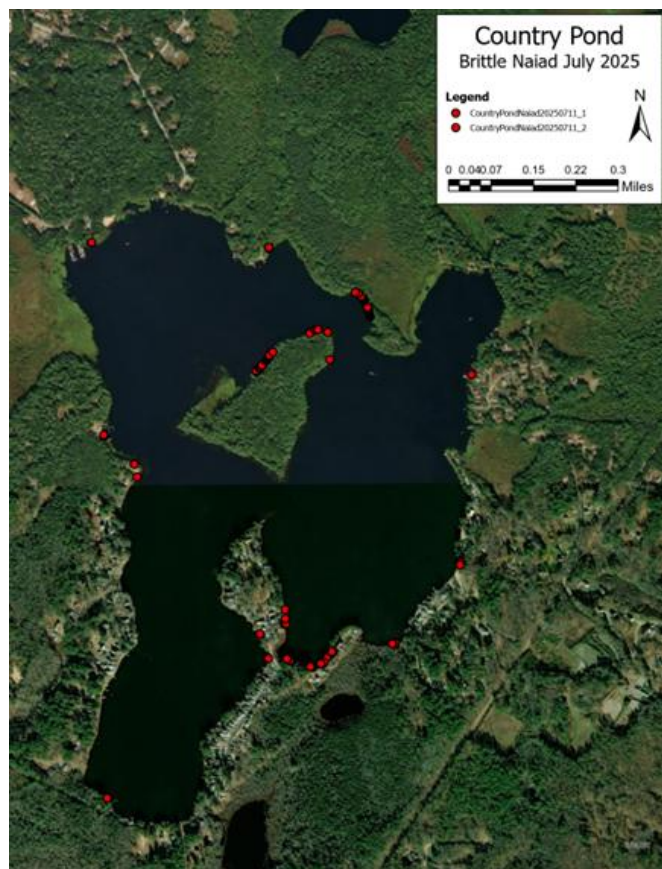
Divers started the first day performing a surface search of the area including the Sunshine Drive boat launch and beach, the lily pads between the launch and the campground beach, the campground beach through the greater campground marina, and the long marsh just west. Divers left markers in all areas except the marina and long marsh. Divers started their extraction at the beach and dock just in front of the gazebo. At the beach there were multiple bushy plants in two feet of water, and at off the dock there were another two plants. An additional two plants were extracted in the vicinity of these. Divers moved to the campground beach to lily pads west of the launch, where five markers were left during their search. A mix of small clusters of tall plants, hovering below the surface, were extracted from right along the lily pads, and much shorter plants, less than a foot tall, were extracted from the open water. While all plants were growing in silt, the open water area had less bottom growth and was more readily stirred up. The heaviest plant growth in this area was on the northern side of the campground beach. Divers ended the day back at the Sunshine Drive boat launch and beach, where they'd dropped one marker in the morning on a plant seen from the surface. At this point there were six taller plants. Divers extracted those plants and all those in the general vicinity of the floating dock across from the beach and the area behind the boats at the launch. Overall, plants were healthy, and many were still growing. All the plants seen and extracted on this day were still bright green and upright.

Divers began the next day with a surface search of the north side of the island where they'd extracted heavily the previous season, and they'd found a large patch of brittle naiad the last time they'd extracted there. They did not see anything from the surface and decided to come back after checking out the Whispering Pines Campground. Once there, divers saw brittle naiad from the surface in the area between the pontoon boat and the speedboat, where there's been a large field previously. These plants had vibrant green leaves on single stems. Behind the last boat there was one upright plant; all others had fallen over. Divers transited to the eastern side of Wilders Grove Road and performed a surface search of the lily pads, where in the previous season they extracted significant brittle naiad. The lily pads were much receded, and divers did not see any plants. Divers returned to the northern side of the island, and extracted the remainder of the large patch, which was now significantly smaller. Additionally, divers extracted many small plants strewn about the bottom and along the reeds and lily pads.

Log:

Diver	Date	Water Body	Vessel Used	Extraction Location	Number of Bags	Yield (Gallons)	Bottom Type
Jamie Burleigh	9/11/2025	Country Pond	16' Starcraft	Gazebo Point	1	2.00	Silt
Sarah MacNeilage Patey	9/11/2025	Country Pond	16' Starcraft	Golden Acres Campground to Sunshine Drive	4	5.50	Silt
Jamie Burleigh	9/11/2025	Country Pond	16' Starcraft	Golden Acres Campground to Sunshine Drive	5	11.00	Silt
Jamie Burleigh	9/11/2025	Country Pond	16' Starcraft	Sunshine Drive boat launch and beach	1	1.50	Silt
Sarah MacNeilage Patey	9/11/2025	Country Pond	16' Starcraft	Sunshine Drive boat launch and beach	1	3.00	Silt
				<b>9/11/2025 total</b>		<b>23.00</b>	
Sarah MacNeilage Patey	9/12/2025	Country Pond	16' Starcraft	Whispering Pines Campground	1	negligible	Silt
Jamie Burleigh	9/12/2025	Country Pond	16' Starcraft	Whispering Pines Campground	1	negligible	Silt
Sarah MacNeilage Patey	9/12/2025	Country Pond	16' Starcraft	Northside Island	1	negligible	Silt
Jamie Burleigh	9/12/2025	Country Pond	16' Starcraft	Northside Island	1	0.50	Silt
				<b>9/12/2025 total</b>		<b>0.50</b>	
				<b>Total gallons extracted</b>		<b>23.50</b>	

Map:



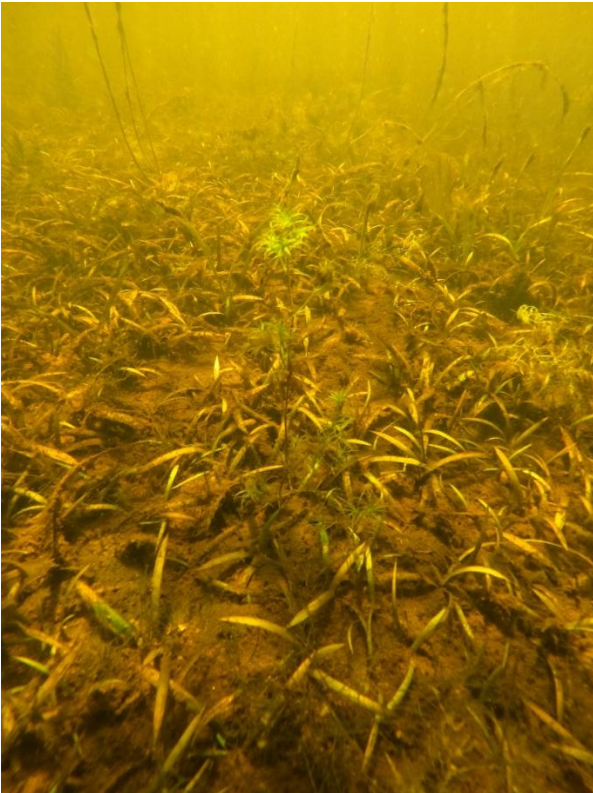
Photos:



Left: One of the single stem brittle naiad plants from the space between the pontoon and the speedboat.

Below left: One of the small brittle naiad plants, surrounded by even smaller plants, remaining on the northside of the island.

Below right: Brittle naiad from the open water area near the floating dock at the Sunshine Drive boat launch and beach.







Top & Bottom: Large, bushy brittle naiad from along the lily pads between the Golden Acres Campground and the Sunshine Drive boat launch and beach.

