

COUNTRY POND



LAKE ASSOCIATION

WELCOME!

COUNTRY POND



LAKE ASSOCIATION

Stormwater Remediation Projects

Greg Senko – President

Watershed Management Plan

- Update published June 2021
- Why does Country Pond have frequent cyanobacteria blooms? Impaired waterbody
- Phosphorus levels are too high
- A 23% reduction in Phosphorus recommended
- Stormwater runoff is major contribution
- Several projects identified to reduce phosphorus
- www.countrypondlakeassociation.org/documents



Country Pond Watershed Management Plan Phase 1: Direct Drainage Area

DRAFT



Photo: Marie Sapienza

Planning Partners:



Planning Consultants:



Watershed Assistance Grant



- Two high value projects selected based on WMP estimates
 - Concannon Rd – highest ranking load reduction
 - Newton Boat Ramp – third highest load reduction
- Applied for \$50k
 - Requires 40% of project in local funding or match
 - Letters of support from Kingston, Newton and land-owners
- Preproposal Sept 2021



Grant Awarded to CPLA

- Decision June 1, 2022
- Final proposal Jan 2022
- Final approval by governor's council April 12, 2023
- Post covid costs increased dramatically, not sure if project can be completed with grant funds
- Full engineering plans needed to know true cost
- ***With NHDES approval, divided ramp project into engineering plan and construction phases***

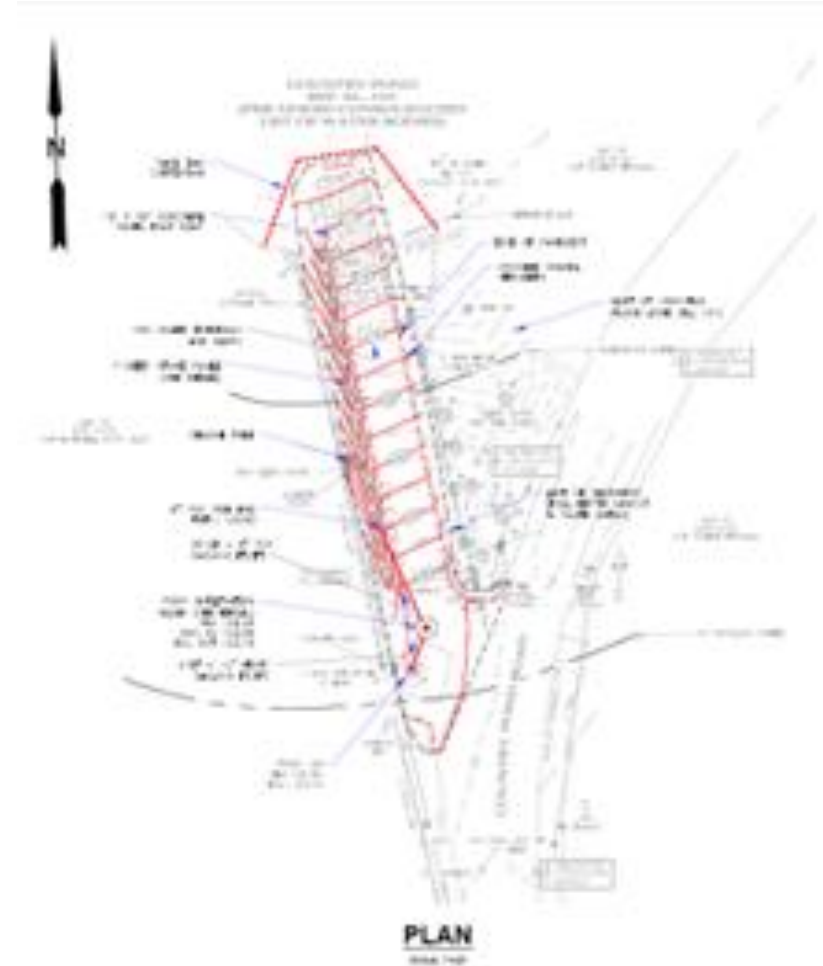


Project Progress

- Concannon Road infiltration trench completed Sept 2023
- Engineering project put out for bid Sept 2023
- Qualifications received in October
- KV Partners selected Nov 2023 - \$10,500
- Test pits completed with Newton DPW assistance
- Engineering phase for boat ramp is complete

Boat Ramp Plans

- Catch basin at top of ramp
- Infiltration basin with overflow to swale on left side of ramp
- Swale runs full length of ramp
- 45' of concrete pads extending 30' into lake
- Upper ramp area covered with asphalt





Time and Cost

- Approximately two weeks to complete work
- Material cost estimated to be up to \$70k
- Grant will cover all material costs
- Construction work contributed by Newton Road Agent to help meet 40% match
- Apply for grant this September
- Early spring or late fall – target is fall 2025

COUNTRY POND



LAKE ASSOCIATION

Thank You!