

COUNTRY POND



LAKE ASSOCIATION

WELCOME!

COUNTRY POND



LAKE ASSOCIATION

Invasive Plant Treatment Program

Greg Senko – President

What is Spiny Naiad?

- Invasive Exotic (*Najas Minor*)
- Also known as Brittle or European Naiad
- Grows shallow water (typically up to 4 feet)
- Spread by boats and trailers, migrating waterfowl
- Breaks apart easily when disturbed
- Seeds spread in the water column and reseed in the lakebed.
- Spreads rapidly

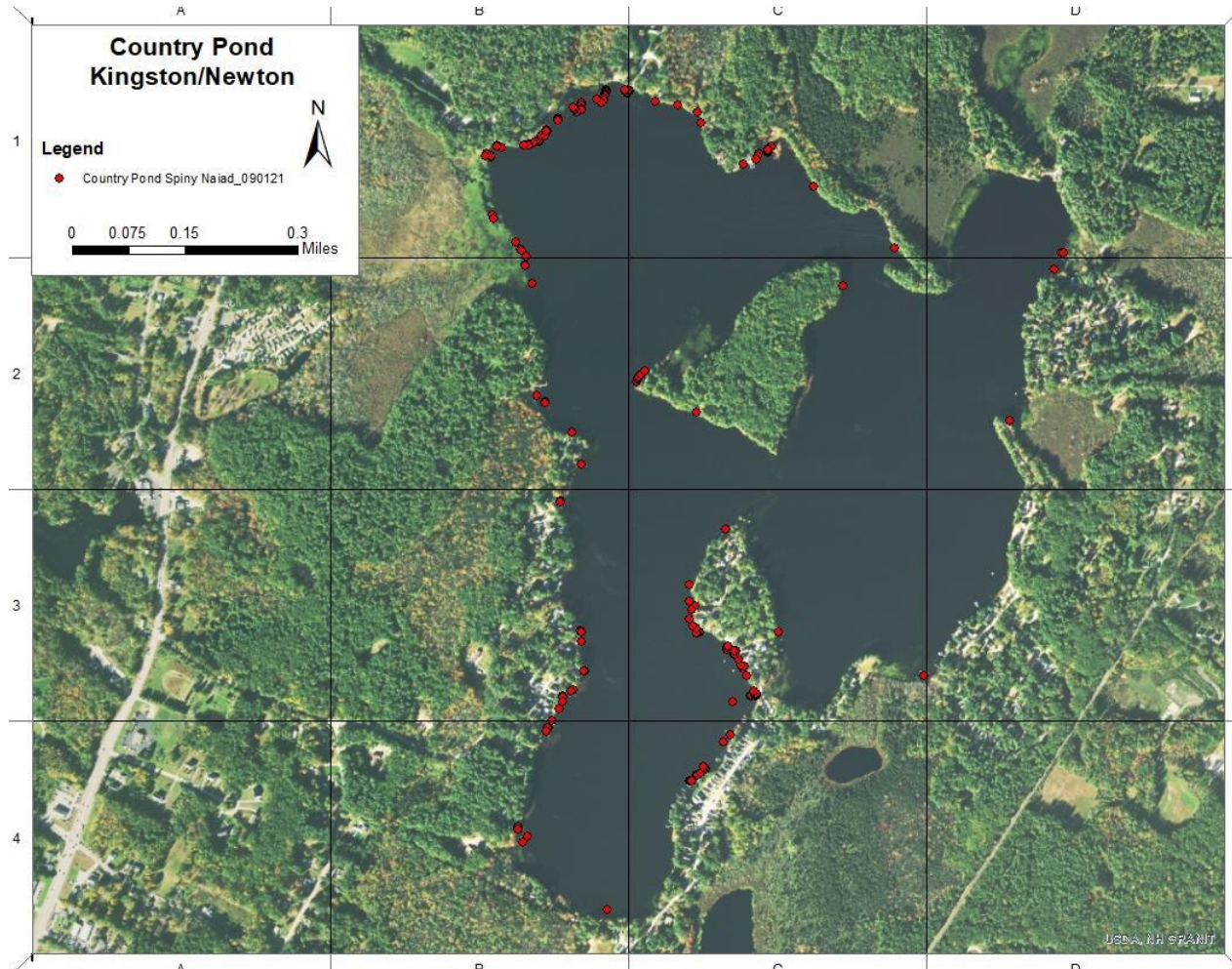


Spiny Naiad in Country Pond

- Spiny (Brittle) Naiad discovered by Weed Watchers in fall of 2021
- Found in a few locations
- Reported to NHDES Exotic Species Program
- September 2021 - NHDES Surveys Spiny Naiad growth in Country Pond
- Survey shows growth in many locations



First Survey Map



- September 2021 baseline survey via kayak
- Red dots are where Spiny Naiad was found
- Found along the shoreline in various locations



Why Treat Spiny Naiad Now?

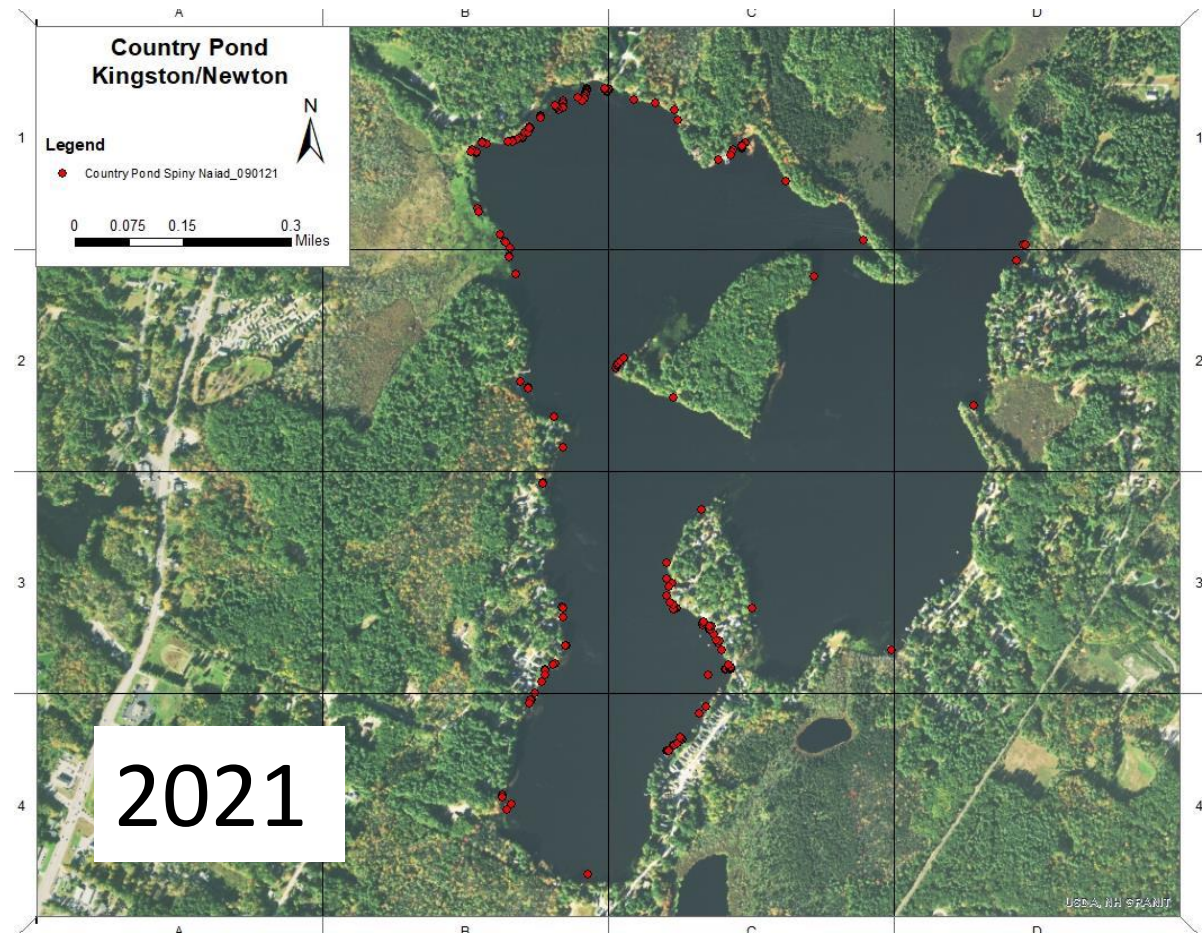
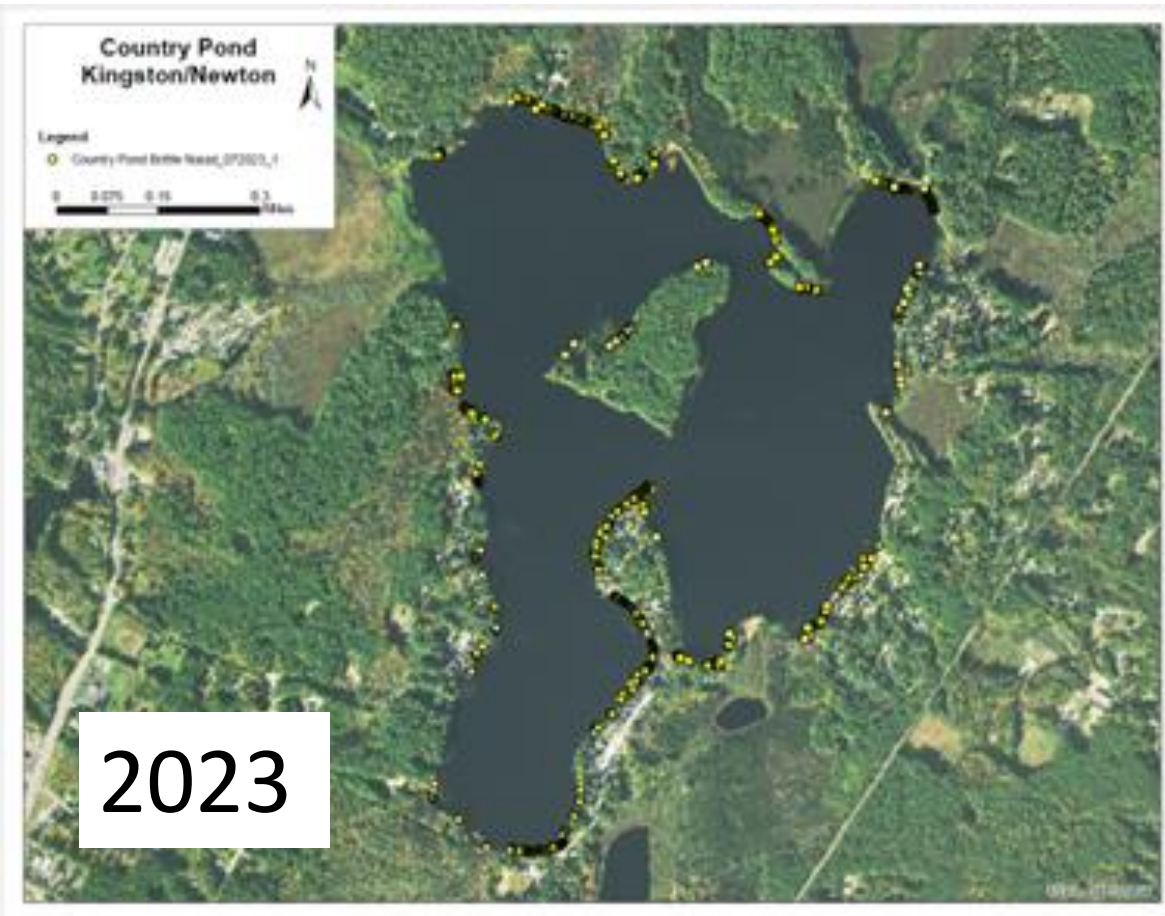
- Invasives spread quickly and outgrow native species
- Invasives add to Total Phosphorus load, negatively impacting water quality
- More difficult to treat once it has spread
- Cost of treatment increases over time
- Negative impact on recreation
 - Swimming
 - Boating
 - Fishing



Treatment Plan History

- March 2022 - NHDES presents Long-Term Management Plan
 - Recommended aggressive treatment
 - Initially recommended herbicide treatment
 - Hand removal by qualified divers
 - www.countrypondlakeassociation/documents
- NHDES pays 100% of first treatment (50% in successive years)
- Grant obtained for Spiny Naiad diver treatment
- \$26k, 15 days, 2 divers
- No divers available in 2022, contract was too late
- ***No treatment in 2022***

Survey Updated July 2023





Treatment 2023

- Two qualified divers hired
- Worked 102 hours over 5 days 8/1 – 9/21
- Weather was challenging, many days not suitable
- 80 gallons of material removed
- Most of shoreline was treated except for a section of shoreline along Wilders Grove
- Had to stop when plants became too brittle to remove



Treatment Plan 2024

- Extent of growth this season unknown but planning for worst case – new survey this summer
- Estimated cost \$15,000
- NHDES Grant received but only covers 50% of cost
- Kingston Conservation Commission will fund 25%
- CPLA will pay the 25% balance
- Treatment by NHDES-qualified diving company ***if needed***

COUNTRY POND



LAKE ASSOCIATION

Thank You!