



Sarah MacNeilage Patey, DBA Diver for Hire, Epping, NH
diverforhirenh@gmail.com

Jamie Burleigh, DBA LTD Diving, Nottingham, NH
ltddivingnh@gmail.com

September 8, 2024

Extraction Report

Location: Country Pond, Newton/Kingston, NH

Date(s): August 20, 2024, August 21, 2024, August 22, 2024, September 3, 2024, September 5, 2024,
September 6, 2024

Exotic/Invasive Plant(s): Spiny/Brittle naiad

Diver(s): Sarah MacNeilage Patey, Jamie Burleigh

Support Crew: None

Total amount extracted (in gallons): 368.00

Total time worked (in hours): 45.0

Detailed report includes Extraction Narrative, Extraction Log, Map, Photos

Narrative:

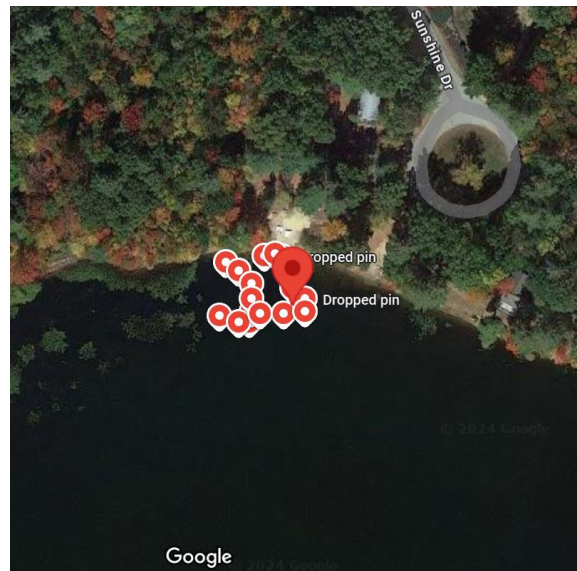
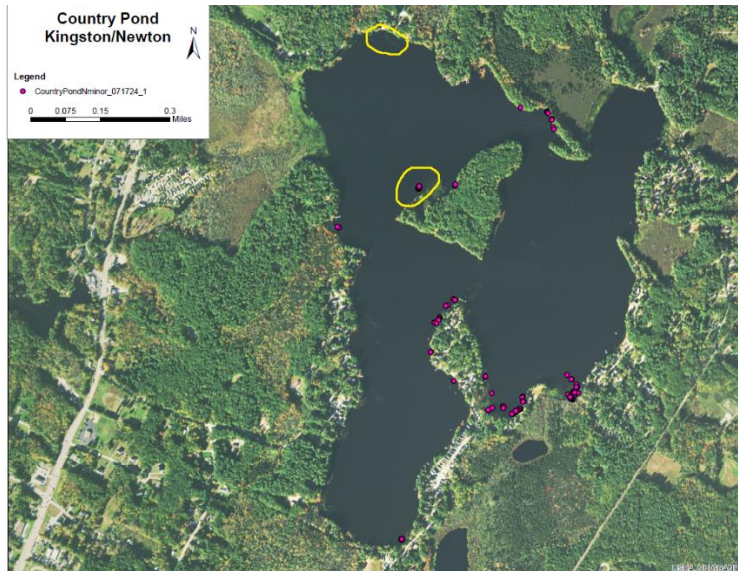
Divers extracted brittle naiad from two areas over six days. On the first day, divers extracted from the island hot spot, where they lessened the field. Divers divided and attacked the field from either side. From the second to last day, divers extracted solely from the area in front of the association boat launch, beach and docked boats. On the second day, upon leaving the boat launch to check the western side of the Newton boat launch as requested, divers could see a very large field of almost surface level brittle naiad plants in the vicinity of the association boat launch and the immediate area. Divers created a barrier with markers and spent the entire second and third day extracting from the area extending from the lily pads to the right of the boat launch to the floating wooden dock out in front of the association beach. Plants were up to four and a half feet tall in five feet of water. Across the field, there were areas where the plants were covered in a green slimy substance. Divers focused on the inner area of the large field and were able to clear the inshore area.

On the fourth, fifth, and sixth days, divers continued extracting from the association boat launch, beach and docked boats. The water depth and the plant size remained constant throughout the extraction area. In the water by the lily pads near the very large house, plants were more sporadic and in very deep silt. Plants along the lily pads across from the floating docks were occasionally covered in the same green slimy substance, as were some in the very large field. By the end of the sixth day, divers cleared all the large plants found from the lily pads near the boat launch all the way to the lily pads in front of the large house along the shore and as far out as the two floating docks. Over the course of the sixth day, divers began extracting in the open water beyond the floating docks. Plants were not clustered, but occurring every five feet, and they were up to five feet tall and in water up to ten feet deep. Divers found plants as far as fifty feet out from the floating docks.

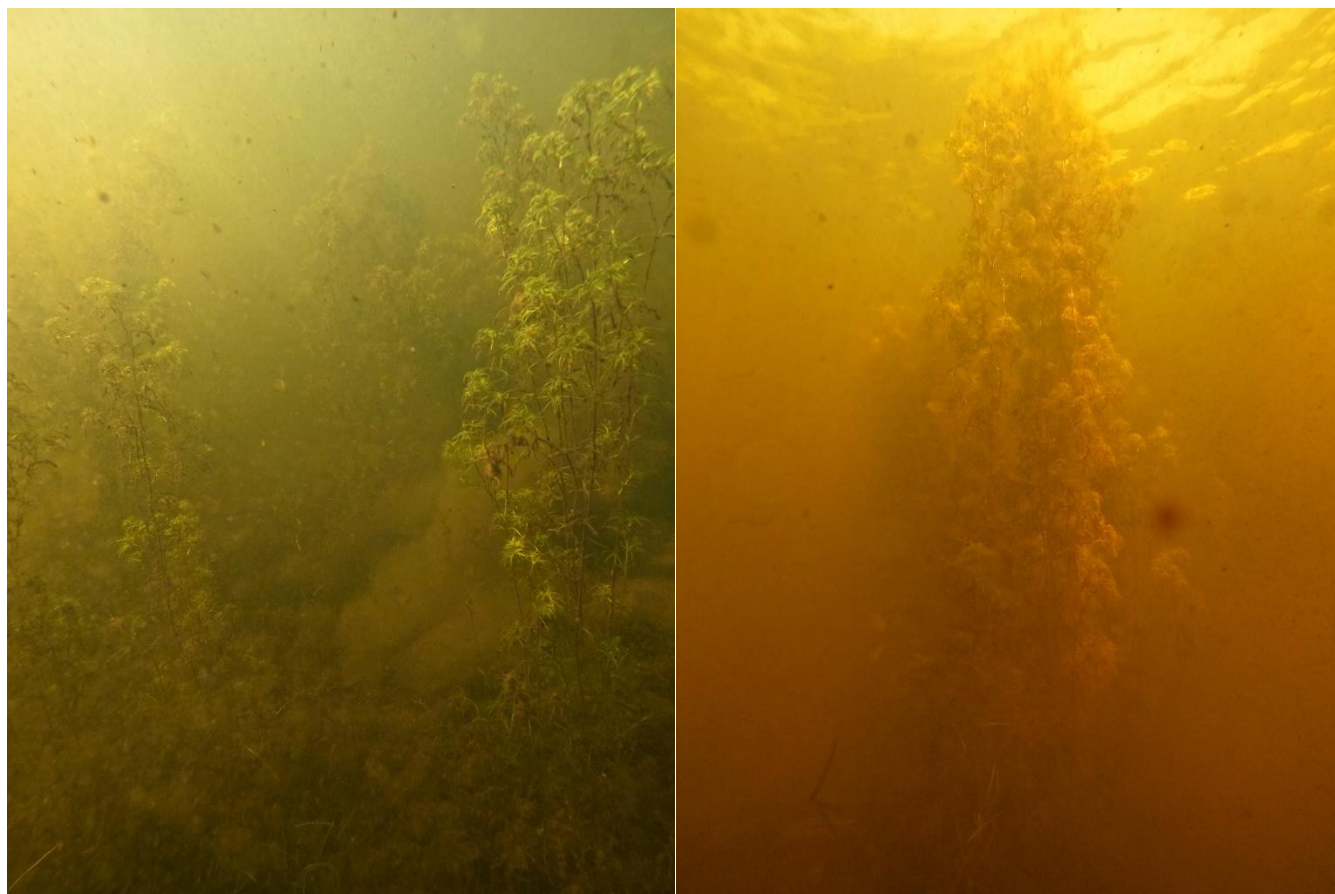
Log:

Diver	Date	Water Body	Vessel Used	Extraction Location	Number of Bags	Yield (Gallons)	Bottom Type
Sarah MacNeilage Patey	8/20/2024	Country Pond	16' Starcraft	Island hot spot	2	10.00	Silt
Jamie Burleigh	8/20/2024	Country Pond	16' Starcraft	Island hot spot	3	17.00	Silt
				8/20/2024 total		27.00	
Sarah MacNeilage Patey	8/21/2024	Country Pond	16' Starcraft	Association boat launch	5	25.00	Silt
Jamie Burleigh	8/21/2024	Country Pond	16' Starcraft	Association boat launch	9	49.00	Silt
				8/21/total		74.00	
Sarah MacNeilage Patey	8/22/2024	Country Pond	16' Starcraft	Association boat launch	5	22.00	Silt
Jamie Burleigh	8/22/2024	Country Pond	16' Starcraft	Association boat launch	12	66.00	Silt
				8/22/2024 total		88.00	
Sarah MacNeilage Patey	9/3/2024	Country Pond	16' Starcraft	Association boat launch	5	23.00	Silt
Jamie Burleigh	9/3/2024	Country Pond	16' Starcraft	Association boat launch	6	35.00	Silt
				9/3/2024 total		58.00	
Sarah MacNeilage Patey	9/5/2024	Country Pond	16' Starcraft	Association boat launch	9	40.00	Silt
Jamie Burleigh	9/5/2024	Country Pond	16' Starcraft	Association boat launch	5	38.00	Silt
				9/5/2024 total		78.00	
Sarah MacNeilage Patey	9/6/2024	Country Pond	16' Starcraft	Association boat launch	4	15.00	Silt
Jamie Burleigh	9/6/2024	Country Pond	16' Starcraft	Association boat launch	5	28.00	Silt
				9/6/2024 total		43.00	
				Total gallons extracted		368.00	

Maps:



Photos:



(Left) Brittle naiad plants from the large field in between the floating docks across from the association beach.

(Right) A very tall and bushy brittle naiad plant from the area in front of the large house along the shoreline.



(Left & Right) Brittle naiad plants from the very large swath of plants found between the lily pads just off the association boat launch to the association beach.