



The Sea Cloud of the Treuhand Group (Hamburg) is a true queen of the seas. Built in Kiel in 1931 as a private yacht for a New York Wall Street broker, she is now a top-class cruise ship on the world seas.

The problem and the consequential damage:

In the course of countless tours in the Caribbean, Atlantic and Mediterranean seas, rust deposits have increasingly formed in the Sea Cloud's lines. Despite the use of chemicals, brown water in the cabins could not be prevented.

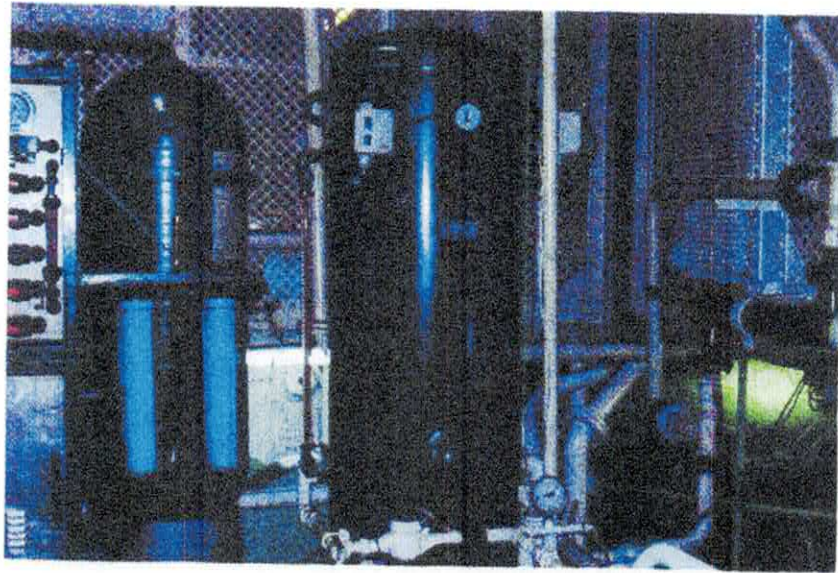
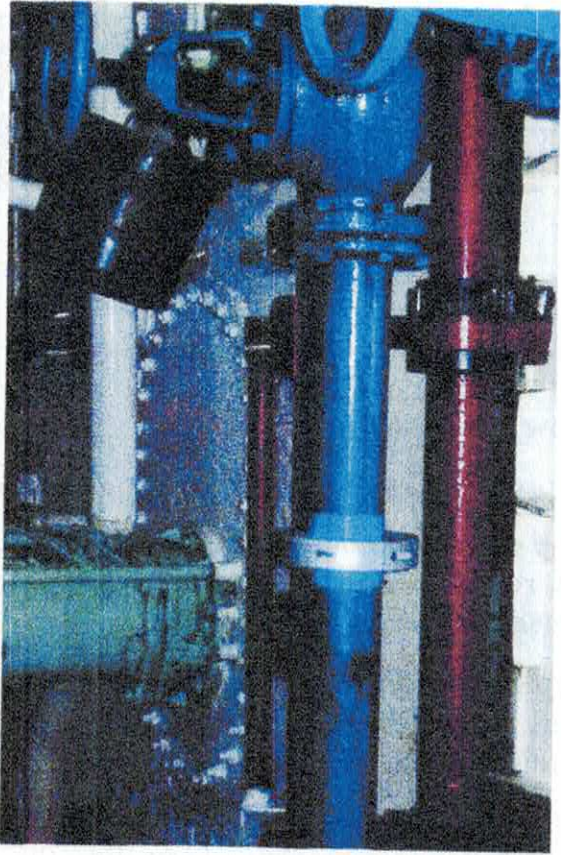
Complaints from passengers were the reason for the shipping company to take action. After the transmission of the Sea Cloud's water flow plan, together with a chief technical engineer, a solution consisting of 2 x 2-1/2 and 1 x 3" collars was decided.

The installation was carried out directly in the port of Malta by a specially flown technician.

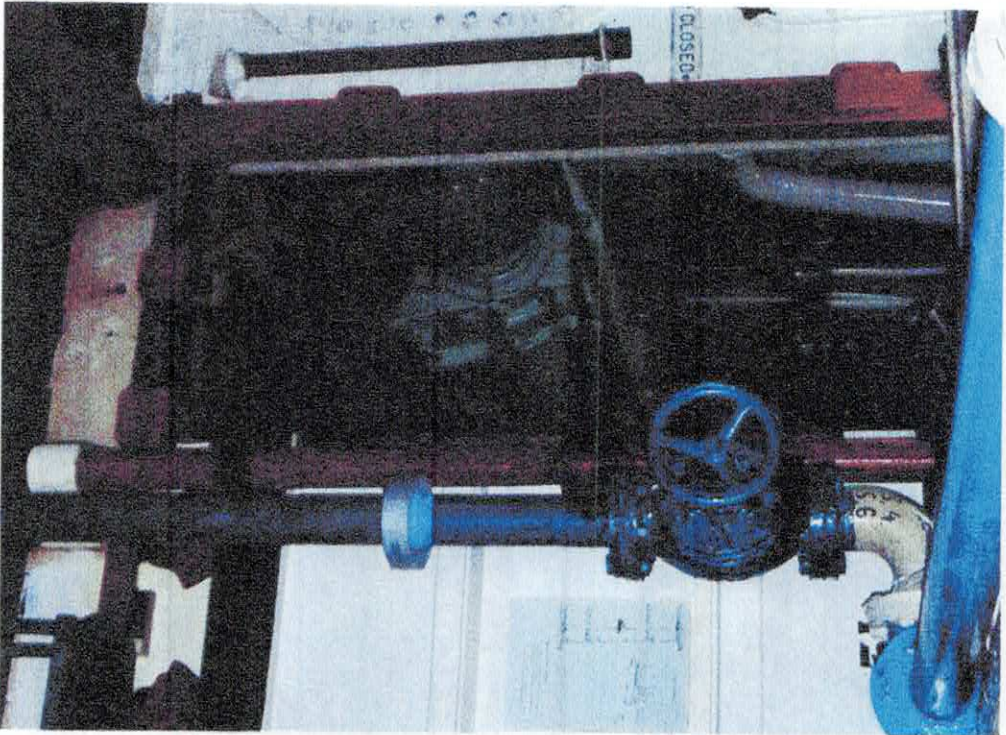
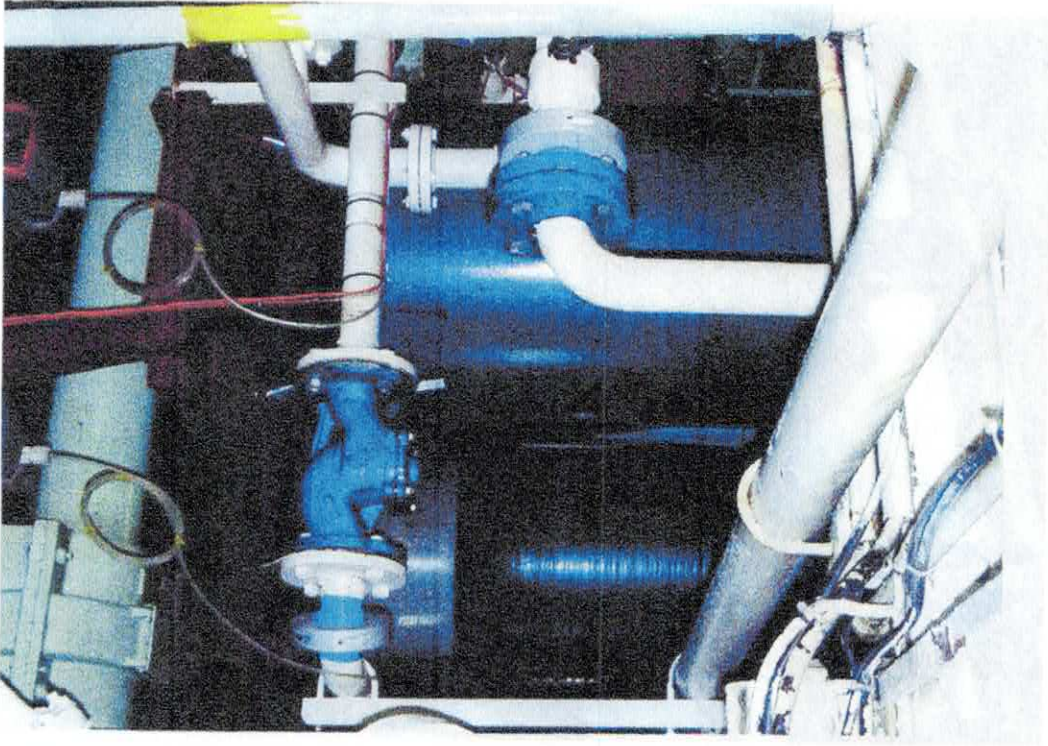
How the effectiveness is checked by the customer side:

Following the installation, both the chief technical engineer and senior crew members were instructed in the technology. Special attention was drawn to the fact that the problem of brown water will intensify in the first few weeks because existing incrustations are gradually being broken down. However, in order to prevent this situation during the crossing from the Mediterranean Sea, 70% of the original pipes were replaced in advance, and along with the installation of the collars, the problems of the brown water and heat exchange were solved.

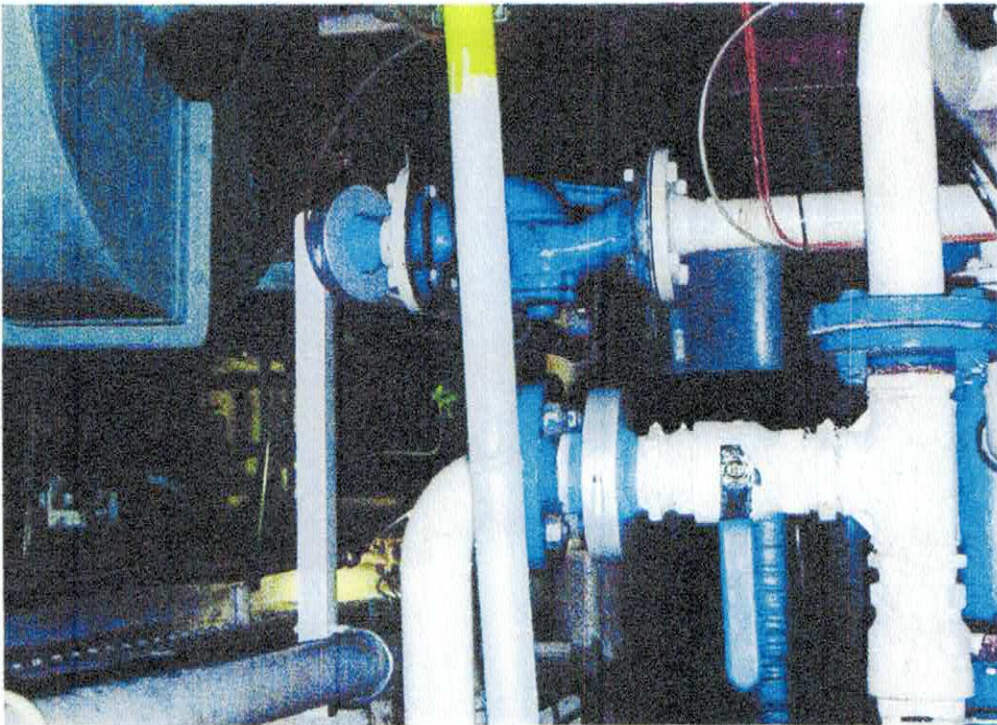
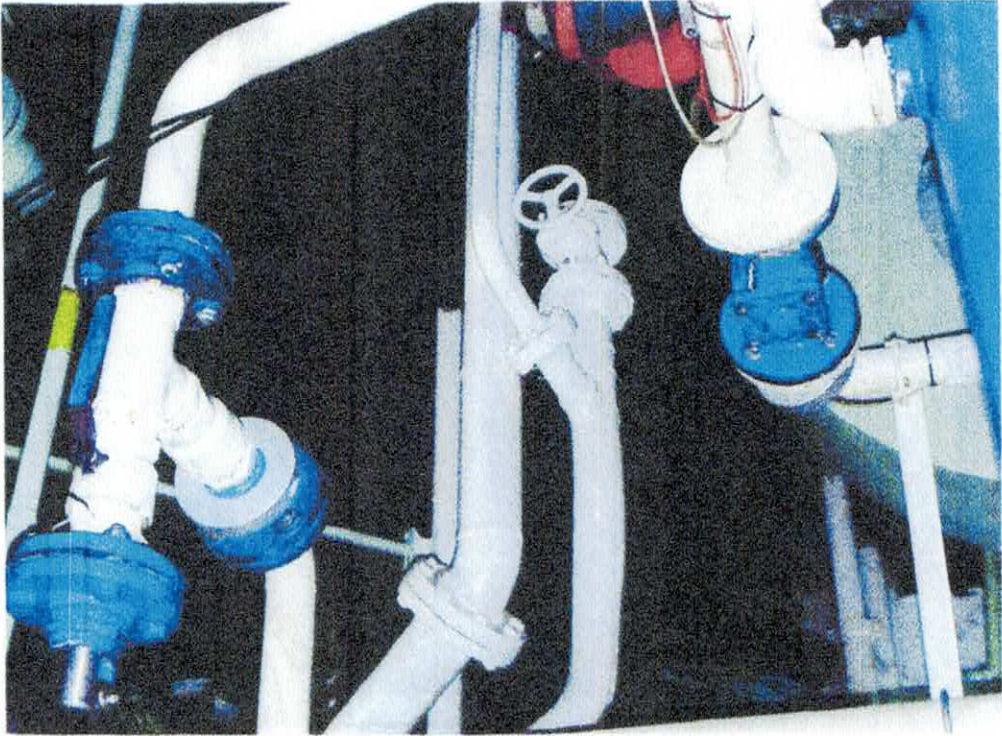


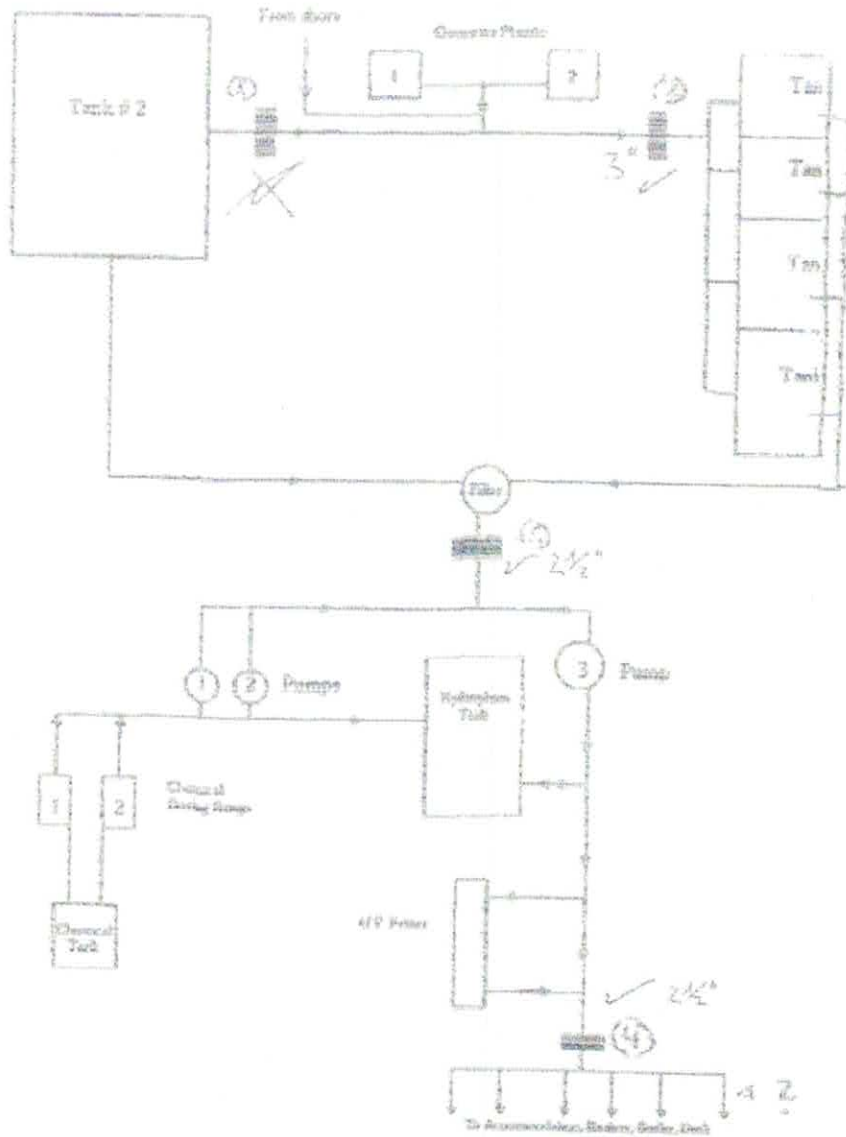












16.02.2006

ll