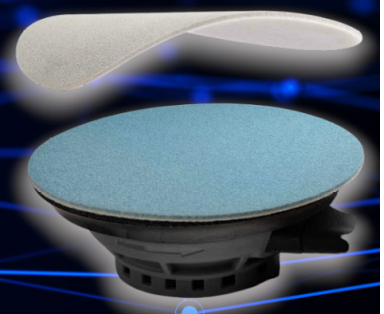


3d-cut^{future}



3d-cut^{future} SUPER FINE FOAM FINISHING POLISHING DISCS

3d-cut super fine foam finishing discs are one of the best on the UK market.

An essential disc for defect removal and scratch refinement playing a key part in the polishing processes to achieve a high gloss finish whilst reducing process time.

3d-cut produce unparalleled results - known for rapid cutting and consistent finishing due to their precise and patterned **3D** mineral structures.

- Super soft sanding and polishing with even pressure
- Provide consistent scratch depth and pattern with a better finish
- No damage or over-sanding to treated surfaces
- Super flexible for sanding and polishing on contour or curved surfaces
- Comfortable while sanding and polishing
- Reduce the time on the compound & polishing process
- Washable and reusable for wet or dry sanding

Size : 150 mm (6") 75mm (3")

Grain : Pyramid Silican Carbide Minerals

Backing : 3mm Foam with Film

Coating : Open Coat

Bond : Resin to Resin

Grit : 150mm P2000-P8000 ; 75mm P2000 - P5000

Colours :  P2000 + P3000  P5000  P8000

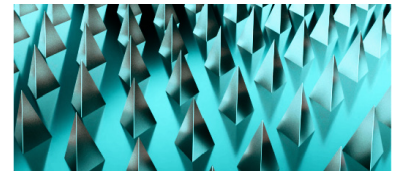
150mm No Hole

75 mm No Hole

Part No	Diameter	Grit	Qty / Box	Part No	Diameter	Grit	Qty / Box
325012000	150mm / 6"	P2000	15	425012000	75mm / 3"	P2000	15
325013000	150mm / 6"	P3000	15	425013000	75mm / 3"	P3000	15
325015000	150mm / 6"	P5000	15	425015000	75mm / 3"	P5000	15
325018000	150mm / 6"	P8000	15				

* Technical Advice for Wet Use & Disc Longevity

- For best results use a water spray bottle to apply water to the substrate being flattened and to the face of the 3d-cut disc.
- After use spray the face of the disc with water to remove any residue.
- Keep the used discs damp - place the damp disc in a sealable plastic bag for storage.



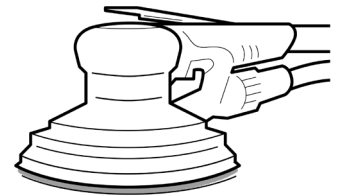
Precise 3D Structure



150 mm + 75 MM No Hole



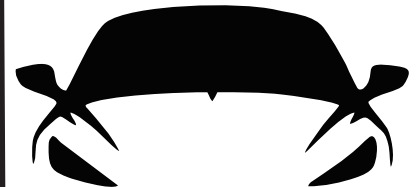
HOOK & LOOP



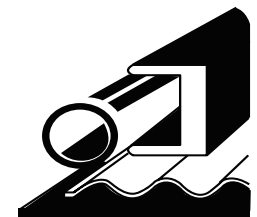
FOR MACHINE SANDING



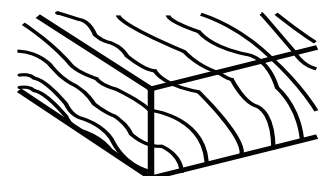
WET OR DRY USE*



HI-GLOSS LACQUERS



METALS



WOOD & COMPOSITES

3d-cut^{future}
SUPER FINE

www.cera-cut.co.uk