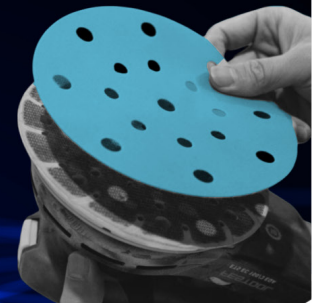
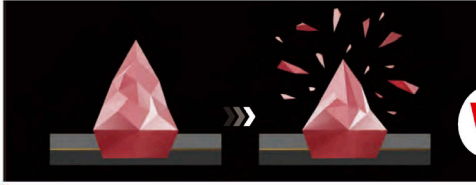


cera-cut[®] future[®]



cera-cut[®] FASTPLUS CERAMIC SANDING DISCS

Fastplus self sharpening ceramic grain are a new innovation - engineered to stay sharp, resulting in new abrasive edges forming during the sanding process cutting to the last grain.



Fastplus: Self-sharpening Ceramic Grain

Fastplus "Self-sharpening" ceramic grain forms new cutting edges when the ceramic abrasive is broken to maintain continuous cutting and way more anti-clogging.



Conventional: Ploughing Action Grain

Conventional grains will only build up residue after crushing, creating a "ploughing surface" that generates more heat and can cause more clogging.

Sizes : 150 mm (6") & 75 mm (3")

Grain : Prismatic Ceramic Minerals ensuring optimal cutting performance & durability

Backing : Strong C Weight Paper

Coating : Semi-Open special stearated coating for extended life and reduced clogging

Bond : Strong resin over resin for maximum load resistance & reduced heat transfer

150mm 15 Hole

75 mm No Hole

Part No	Diameter	Grit	Qty / Box	Part No	Diameter	Grit	Qty / Box
115010040	150mm / 6"	P40	50	415010080	75mm / 3"	P80	100
115010060	150mm / 6"	P60	50	415010120	75mm / 3"	P120	100
115010080	150mm / 6"	P80	100	415010180	75mm / 3"	P180	100
115010120	150mm / 6"	P120	100	415010240	75mm / 3"	P240	100
115010180	150mm / 6"	P180	100	415010320	75mm / 3"	P320	100
115010240	150mm / 6"	P240	100	415010400	75mm / 3"	P400	100
115010320	150mm / 6"	P320	100	415010500	75mm / 3"	P500	100
115010400	150mm / 6"	P400	100	415010600	75mm / 3"	P600	100
115010500	150mm / 6"	P500	100	415010800	75mm / 3"	P800	100
115010600	150mm / 6"	P600	100				
115010800	150mm / 6"	P800	100				
115011200	150mm / 6"	P1200	50				
115011500	150mm / 6"	P1500	50				

Technical Support Notes

Scratch Pattern

Due to the consistency and sharpness of the ceramic technology, operators may have to select a higher disc grit than conventional abrasives for example select a P320 instead of P240.

Speed Setting

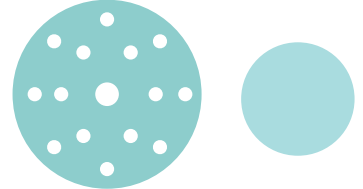
The abrasive technology continuously fractures to form sharp points and edges, slicing cleaner and faster, staying cooler and lasting longer than conventional abrasives. The operator may need to increase the speed of the sander compared to using conventional aluminium oxide abrasives.

Interface Pads

The fracturing process will be impeded by the incorrect size and density of interface pad. The recommended interface pad is the Cera-Face 150mm 5mm 15 Hole medium density. Part No 415010000



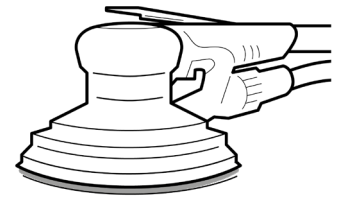
FASTPLUS CERAMIC TECHNOLOGY



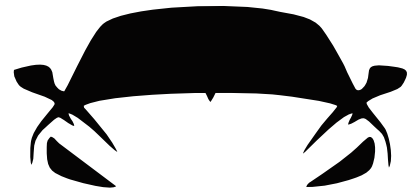
150 mm 15 HOLE 75 mm NO HOLE



HOOK & LOOP



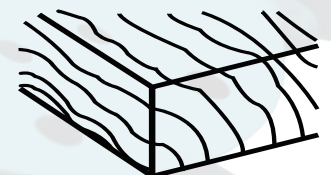
FOR MACHINE SANDING



BODYSHOP & AUTOMOTIVE



MANUFACTURING & CONSTRUCTION



WOOD & COMPOSITES



TRANSPORT, PLANT & EQUIPMENT