

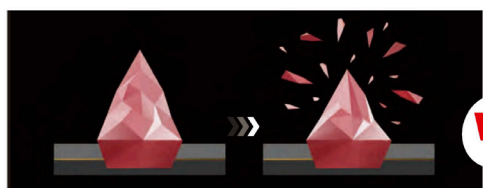
Cerane^{future}net

STRIPS

Cerane[®]net

FASTPLUS CERAMIC NET SANDING STRIPS

With **Fastplus** self sharpening ceramic grain - a new innovation - engineered to stay sharp, resulting in new abrasive edges forming during the sanding process cutting to the last grain.



Fastplus: Self-sharpening Ceramic Grain

Fastplus "Self-sharpening" ceramic grain forms new cutting edges when the ceramic abrasive is broken to maintain continuous cutting and way more anti-clogging.



Conventional: Ploughing Action Grain

Conventional grains will only build up residue after crushing, creating a "ploughing surface" that generates more heat and can cause more clogging.

Size : 70 * 420mm with a klss-cut perforation offering 2 sizes

Grain : Prismatic Ceramic Minerals ensuring optimal cutting performance & durability

Backing : Knitted Fabric Net with Matrix Holes for optimum dust extraction

Coating : Open special stearated coating for extended life and reduced clogging

70 X 420 mm Net

Part No	Size	Grit	Qty / Box
615010080	70*420 mm with Perforation	P80	50
615010120	70*420 mm with Perforation	P120	50
615010180	70*420 mm with Perforation	P180	50
615010240	70*420 mm with Perforation	P240	50
615010320	70*420 mm with Perforation	P320	50
615010400	70*420 mm with Perforation	P400	50
615010500	70*420 mm with Perforation	P500	50

Suitable Materials

- Hard wood
- Non-ferrous metal
- Paint stripping / removal
- Paint sanding
- Lacquers
- Plaster / Putty
- Plastics
- Body filler
- Primer
- Soft / Resinous wood
- Synthetic materials
- Veneer
- Chipboard
- Copper alloys / brass / bronze
- Glass fibre



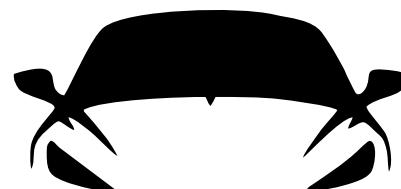
70*420mm Net Matrix Holes With Perforation



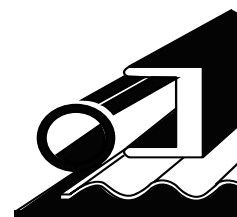
HOOK & LOOP



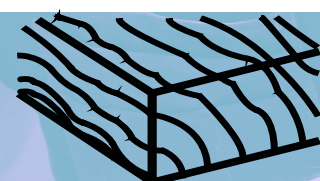
FOR BLOCK SANDING (HAND & MACHINE)



BODYSHOP & AUTOMOTIVE



MANUFACTURING & CONSTRUCTION



WOOD & COMPOSITES



TRANSPORT, PLANT & EQUIPMENT

