



## 系列数控转塔冲床 CNC Turret Punch

HPE HPI HPH

**Yawei** 亚威

股票代码 002559

Stock Code 002559

# 不断优化 可靠高效

Continuous Optimization Reliable and Efficient

## 产品目录 Product Catalogue

不断优化 可靠高效 Continuous Optimization Reliable and Efficient	02
HPE系列 HPE Series	04
HPI系列 HPI Series	10
HPH系列 HPH Series	14
通用部件 Common Parts	18
选配部件 Optional Parts	20
数控系统 CNC Controller	22
编程软件 Programming Software	23

引进日本NISSHINBO公司数控转塔冲床技术，亚威制造的具有国际一流水平的数控转塔冲床，服务金属板材加工行业，拥有广泛的高端客户。

多年来亚威专注于创新研发，可提供各种成熟多样化的产品及功能部件供客户选择，为您提供最佳的冲压工艺解决方案。

Adopts CNC Turret Punch technology from NISSHINBO, Japan, Yawei manufactures international first-class level CNC Turret Punch, serves all kinds of material forming industry, have a wide range of high-end customers.

Yawei focus on research and innovation for years, and offering the best punching and forming solutions by different models of mature products and parts.

### 高速数控转塔冲床 CNC Hydraulic Turret Punch

- 全新的工业外观设计，赏心悦目
- 创新整合运用各类数控转塔冲技术，更高效、更节能、更环保
- 更高的参数和配置，功能更强大，操作更简便
- Complete new industrial design with delightful appearance
- Innovative application of all sorts turret punch technology, more efficient more energy-saving, and environment friendly
- Better specification and configuration, more powerful function, and easy operation



### HPE 系列数控转塔冲床

#### HPE Series CNC Turret Punch

##### 高效机械伺服数控转塔冲床 High-efficiency Mechanical Servo CNC Turret Punch

- 高效节能的单电伺服冲压系统，配合多轴联动控制，运行效率高；间隙补偿装置，有效降低结构内部磨损，提升机构寿命，可实现智能静音冲压。精确的定位精度，更好的保证成型质量
- High efficiency single electric servo punch system, integrated with multi-axis linkage control and gap compensation device, can realize high efficient performance, quiet operation, precise positioning, lower inner deterioration, longer life span and nice processing quality



### HPI 系列数控转塔冲床

#### HPI Series CNC Turret Punch

##### 高效液压数控转塔冲床 High-efficiency Hydraulic Turret Punch

- 技术成熟，定位中端，品质优良，可满足各种复杂成型，能够实现多轴联动，大幅提升加工效率
- Mature control and processing technology, suitable for middle class market and meet all kinds of complicated forming, can realize multi-axis linkage, improved the processing efficiency



### HPH 系列数控转塔冲床

#### HPH Series CNC Turret Punch

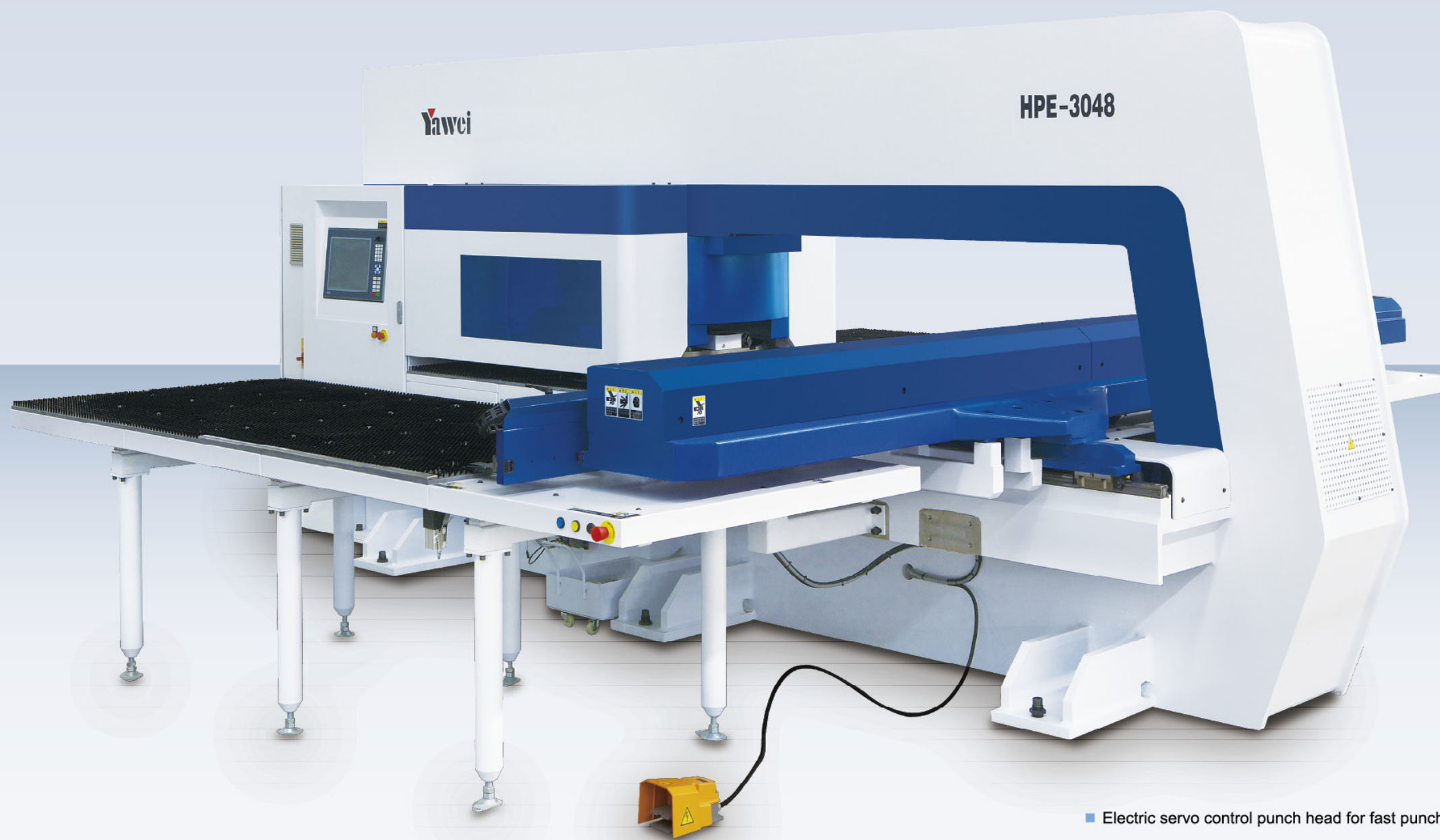
##### 高性价比液压数控转塔冲床 High Cost Performance Hydraulic CNC Turret Punch

- 技术成熟，定位中端，经典配置组合，确保机床稳定耐用，质量可靠
- Locates in middle-end market, HPH classic configuration with mature technology makes machine stable and durable



# HPE系列 数控转塔冲床

HPE Series CNC Turret Punch



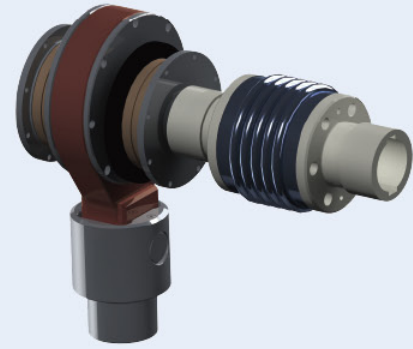
- 冲头采用单伺服控制，打标频次达到2000次/min
- 全触控人机操作界面，功能强大的数控系统
- 精确地控制定位，下死点定位精度达0.01mm
- 专利技术的常啮合旋转工位，重复定位精度更高
- 可实现高效精密滚压成型
- 节能环保、低能耗、低噪音

- Electric servo control punch head for fast punching performance, marking frequency up to 2,000 hits/min
- All-touch HMI operation interface, powerful functions CNC controller
- Precise ram positioning control, the BDC positioning accuracy is 0.01mm
- Nisshinbo patented keeping-touch Auto-index technology, high repositioning precision
- Efficient precision roll forming
- Energy saving, low power consumption with low noise



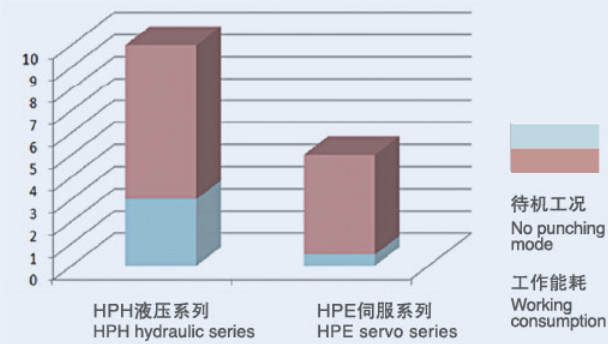
# HPE系列 数控转塔冲床

HPE Series CNC Turret Punch



## 伺服主传动机构 Servo Ram Design

- 采用单伺服驱动曲轴连杆直驱结构，成熟稳定，关键部位采用特殊工艺安装，有效消除内部间隙，不仅大幅提升使用寿命，而且在实际使用中定位精度得到有效保证；全伺服闭环控制，可精确定位至行程范围内任意位置，冲压成型效果更佳
- Ram design uses a single servo motor coupled directly to the crankshaft for highest punching performance and reliability. Simplified design enhances component life and ensures positioning accuracy by a closed loop servo control system



## 高效节能 Energy Efficiency

- 高效智能冲压模式，实现快速计算压力，控制冲压能量，降低冲压能耗，待机时接近零能耗；制动时产生的能量可以有效回收，在加速时二次利用，节能环保，综合工况能耗约为液压机的一半，经济效益佳
- 全伺服控制，无需后期更换液压油，维护成本非常低
- Realize high energy efficiency by calculating and controlling the punch force. Additionally, energy generated from break will be recycled for second acceleration. The consumption will be only half of hydraulic punch
- Complete servo control without hydraulic oil, low maintenance cost

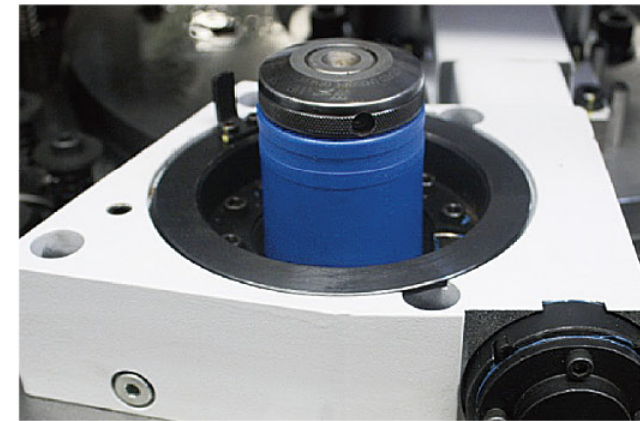
## 高速静音 High Speed, Low Noise

- 充分发挥电伺服控制在任意位置速度可调的特点，配合先进的冲压工艺，有效降低冲压噪音，提供舒适的操作环境
- 高精度无缝机械结构，高速运动时内部无异响、杂音
- Advanced punching technology provides full control of ram speeds, stroke and forming combined with low noise and energy consumption
- High-precision seamless mechanical structure, no internal abnormal noise during high-speed movement



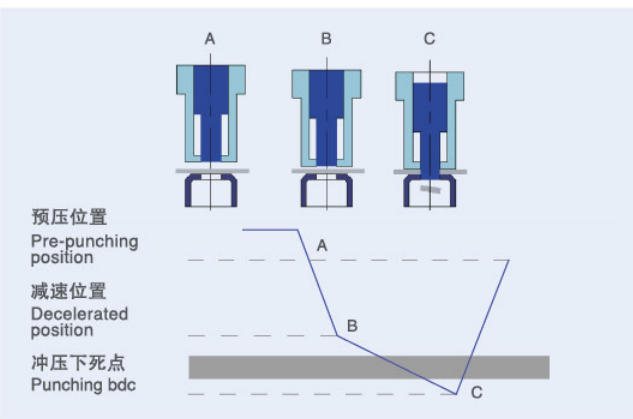
## 转盘结构 Turret Structure

- 转塔采用高强度合金钢铸造，通过一次装夹精密加工而成，抗氧化及承载能力强，吸振及精密导向性能卓越，冲压过程中不易出现卡模、带料等现象，并有效解决使用过程中密集冲孔时板材变形过大的问题
- 配合精密加工的导向衬套，大幅提升模具实际使用寿命
- Turret processed through one-time clamp precision machining with high strength alloy casting steel, strong antioxidant and carrying capacity, excellent vibration and precision-oriented performance, less tool stuck, strip or other phenomena, and effectively reduce the plate deformation when punching high-density holes
- Guide bushing with precision machining, significantly increasing the tool life



## 旋转模 Tool Auto-index

- 专利技术的常啮合传动结构，无需担心二次定位误差及磨损，重复定位精度控制在0.03mm以内，更适应精密加工需求，主传动采用精密蜗轮蜗杆结构，与T轴传动联动控制，控制系统准确读取实时位置
- Nisshinbo patented keeping-touch Auto-index design eliminates secondary positioning errors, make the repositioning precision within 0.03mm by linkage transmission control of T axis, worm gear and rod



## 下模快速装卸 Lower Die Holder, Fast Change

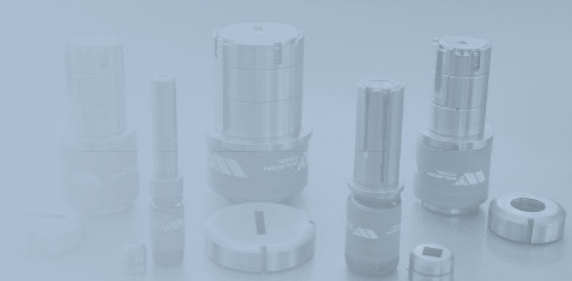
- 特有的换模结构有效缩短使用时频繁换模的时间，提升工作效率，精密的加工定位装置保障了重复定位精度
- Special die removal device shortens the changing time, rises the work efficiency, precise positioning device guarantees the repositioning accuracy





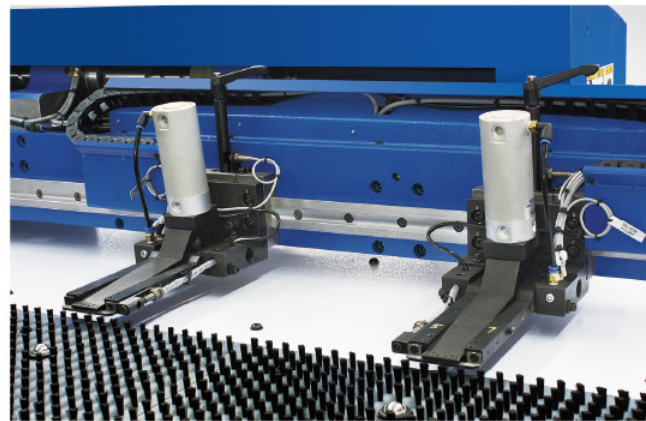
# HPE系列 数控转塔冲床

HPE Series CNC Turret Punch



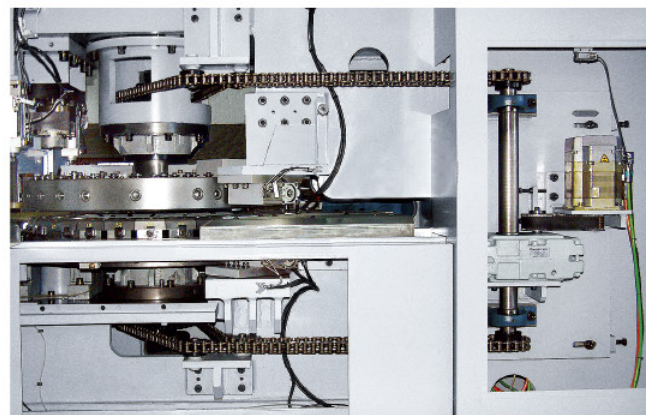
## 触控式人机界面 All-touch HMI Interface

- 采用17寸触控式人机界面，针对冲床开发设计，操作简单，功能强大
- 集成图形离线模拟、动态仿真、模具对比等冲床专用功能
- Adopts 17 inches all-touch HMI interface, which developed especially for turret punch, easy operation and powerful functions
- Integrated functions such like off-line simulation, dynamic simulation, tool comparison and so on



## 送料机构 Feeding Structure

- 大导程高精度磨削滚珠丝杆，控制时无需采用分段补偿，运动定位精度更高，运行噪音更小，滚珠丝杆综合寿命更长
- 标配气动摆动式高强度夹钳，结构成熟稳定，能够自适应板材变形，确保夹钳长期稳定运行
- Long stroke double-precision grinding ball screw rod without using segmented compensation during control, higher positioning accuracy, smaller noise and resistance, longer life time
- Standard swing type pneumatic clamps, mature and stable, can be adapted to sheet deformation to ensure the long term stable operation

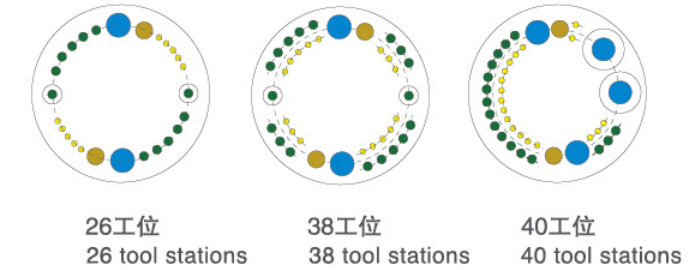


## 转盘驱动 Turret Drive

- 结构紧凑，合理的负载动力匹配，传动稳定性高，可以根据系统指令，快速响应传递动力，精密调校的转塔定位装置可确保准确选刀
- Compact structure with reasonable loading force distribution enables the fast and stable transmission, the precise turret positioning device guarantees the accuracy of tools selection

## 标准配置 Standard Configuration

- 数控系统选用西门子数控系统
- 冲压系统采用亚威股份研制的机械伺服冲压系统
- 配置38工位转盘，2个旋转模位 (2B)
- 配置自动润滑系统、板料变形监控装置
- Siemens CNC Controller
- Electric servo ram designed by Yawei
- 38 station turret with 2 auto-index station (2B station)
- Equipped with tool hoisting device, automatic lubrication for machine and sheet metal deformation sensors



模位类别 Tool station category	标记 Symbol	26工位 26 tool stations		38工位 38 tool stations		40工位 40 tool stations		尺寸范围 Dimension range
		NO	AI	NO	AI	NO	AI	
A	●	10		16		18		ø3.0~ø12.7mm
B	●	10	2	16	2	16		ø12.7~ø31.75mm
C	●	2		2		2		ø31.75~ø50.8mm
D	●	2		2		2	2	ø50.8~ø88.9mm

## HPE系列数控转塔冲床参数 Parameters of HPE series CNC Turret Punch

参数 Parameter	单位 Unit	HPE-3044	HPE-3047	HPE-3048	HPE-3057	HPE-3058
公称力 Normal pressure	KN	294	294	294	294	294
最大加工板材尺寸 (含一次再定位) Max.processing sheet size	mm	1250x2500	1250x4000	1250x5000	1500x4000	1500x5000
最大加工板材厚度 Max.processing sheet thickness	碳钢板 Carbon steel	mm	6.35	6.35	6.35	6.35
	不锈钢板 Stainless steel	mm	4	4	4	4
一次冲孔最大直径 Max.punch diameter	mm	ø88.9	ø88.9	ø88.9	ø88.9	ø88.9
冲孔精度 Punch accuracy	mm	±0.1	±0.1	±0.1	±0.1	±0.1
冲头冲压频次 Ram stroke rates	cpm	1500	1500	1500	1500	1500
最高冲孔频率 (1mm步距 6mm冲程) Punch frequency(1mm step, 6mm punching stroke)	cpm	700	700	700	700	700
最高冲孔频率 (25.4mm步距 6mm冲程) Punch frequency(25.4mm step, 6mm punching stroke)	cpm	400	400	400	400	400
板材最大移动速度 Maximum speed of the plate movement	m/min	102	102	102	102	102
转盘转速 Turret speed	rpm	30	30	30	30	30
控制轴数 CNC axis		5(X,Y,T,C,Z)	5(X,Y,T,C,Z)	5(X,Y,T,C,Z)	5(X,Y,T,C,Z)	5(X,Y,T,C,Z)
工作综合功率 Total power consumption	kW	6.1	6.1	6.1	6.1	6.1
气源 Air resource	Mpa	0.6	0.6	0.6	0.6	0.6
外形尺寸 Overall dimension	长 L	mm	5410	5410	5410	5910
	宽 W	mm	2300	4000	5000	4000
	高 H	mm	2260	2260	2260	2260
重量 Weight	kg	14000	15000	16000	18000	19000



# HPI系列

## 数控转塔冲床

HPI Series CNC Turret Punch



- 德国哈雷液压系统，冲压频次达1000次/min
- 专利技术的常啮合旋转模位，定位精度高
- 多种转塔布局可选，适应不同客户需求
- 成熟的控制技术，应用广泛
- 高效稳定运转，故障率低
- 中高端配置，性价比突出

- Adopts Germany H+L hydraulic system, punch stroke rates up to 1000 hits/min
- Patented Nisshinbo technology for keeping-touch Auto-Index design, with higher positioning accuracy
- Multi turrets to choose, adopt to different customers request
- Sophisticated control technology, widely applied
- Efficient and stable operation, low failure rate
- Outstanding cost performance ratio



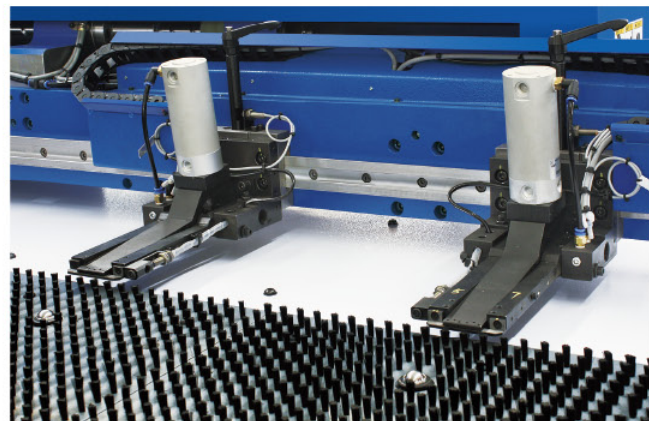
# HPI系列 数控转塔冲床

HPI Series CNC Turret Punch



## 转盘结构 Turret Structure

- 转塔采用高强度合金钢铸造，通过一次装夹精密加工而成，抗氧化及承载能力强，吸振及精密导向性能卓越，冲压过程中不易出现卡模、带料等现象，并有效解决使用过程中密集冲孔时板材变形过大的问题
- 配合精密加工的导向衬套，大幅提升模具实际使用寿命
- Turret processed through one-time clamp precision machining with high strength alloy casting steel, strong antioxidant and carrying capacity, excellent vibration absorption and precision-oriented performance, less tool stuck, strip or other phenomena, and effectively reduce the plate deformation when punching high-density holes
- Guide bushing by precision machining, significantly increases the tool life



## 送料机构 Feeding Structure

- 大导程精密磨削滚珠丝杆，控制时无需采用分段补偿，运动定位精度更高，运行噪音更小，滚珠丝杆综合寿命更长
- 标配气动摆动式高强度夹钳，结构成熟稳定，能够自适应板材变形，确保夹钳长期稳定运行
- Long stroke double-precision grinding ball screw rod without using segmented compensation during control, smaller noise and resistance, longer life time
- Standard swing type pneumatic clamps, mature and stable, can be adapted to sheet deformation to ensure the long term stable operation

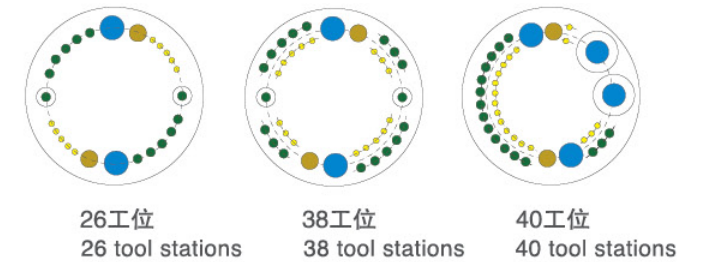


## 液压系统 Hydraulic System

- 冲压频次达到1000次/min
- 结构成熟，稳定性高
- 综合性价比高，具备成型功能
- Stroke rates up to 1000hits/min
- Compact design with high stability
- High cost performance with full forming function

## 标准配置 Standard Configuration

- 数控系统选用西门子数控系统
- 冲压系统采用德国H+L公司液压驱动冲压系统
- 配置38工位转盘，2个旋转模位 (2B)
- 配置自动润滑系统、板料变形监控装置
- Siemens CNC Controller
- Hydraulic punching system from H&L Germany
- 38 station turret with 2 auto-index stations(2B station)
- Tool hoisting device, automatic lubrication and sheet deformation sensors



模位类别 Tool station category	标记 Symbol	26工位 26 tool stations		38工位 38 tool stations		40工位 40 tool stations		尺寸范围 Dimension range
		NO	AI	NO	AI	NO	AI	
A	●	10		16		18		ø3.0~ø12.7mm
B	●	10	2	16	2	16		ø12.7~ø31.75mm
C	●	2		2		2		ø31.75~ø50.8mm
D	●	2		2		2	2	ø50.8~ø88.9mm

## HPI系列数控转塔冲床参数 Parameters of HPI Series CNC Turret Punch

参数 Parameter	单位 unit	HPI-3044	HPI-3047	HPI-3048	HPI-3057	HPI-3058
公称力 Normal pressure	kN	294	294	294	294	294
最大加工板材尺寸 (含一次再定位) Max.processing sheet size	mm	1250x2500	1250x4000	1250x5000	1500x4000	1500x5000
最大加工板材厚度 Max.processing sheet thickness	碳钢板 Carbon steel	mm	6.35	6.35	6.35	6.35
	不锈钢板 Stainless steel	mm	4	4	4	4
一次冲孔最大直径 Max.punch diameter	mm	ø88.9	ø88.9	ø88.9	ø88.9	ø88.9
标配模位数 Standard tool station		38	38	38	38	38
冲孔精度 Punch accuracy	mm	±0.1	±0.1	±0.1	±0.1	±0.1
冲头冲压频次 Ram stroke rates	cpm	1000	1000	1000	1000	1000
最高冲孔频率 (1mm步距 6mm冲程) Punch frequency (1mm step, 6mm punching stroke)	cpm	595	595	595	595	595
最高冲孔频率 (25.4mm步距 6mm冲程) Punch frequency (25.4mm step, 6mm punching stroke)	cpm	295	295	295	295	295
板材最大移动速度 Maximum speed of the plate movement	m/min	102	102	102	102	102
转盘转速 Turret speed	rpm	30	30	30	30	30
控制轴数 CNC axis		5(X, Y, Z, T, C)	5(X, Y, Z, T, C)	5(X, Y, Z, T, C)	5(X, Y, Z, T, C)	5(X, Y, Z, T, C)
总功率 Total power consumption	kW	21	23	24	23	24
气源 Air resource	Mpa	0.6	0.6	0.6	0.6	0.6
外形尺寸 Overall dimension	长 L	mm	5600	5600	5600	6100
	宽 W	mm	2300	4000	5000	4000
	高 H	mm	2200	2200	2200	2200
重量 Weight	kg	14000	15000	16000	18000	19000



# HPH系列 数控转塔冲床

HPH Series CNC Turret Punch



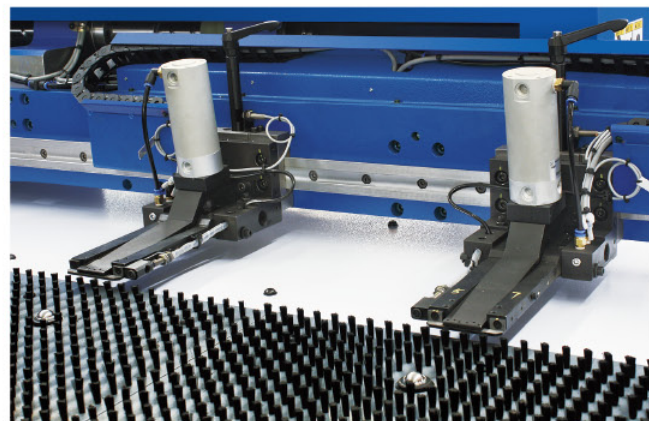
- 德国哈雷液压系统，冲压频次达600次/min
- 专利技术的常啮合旋转模位，定位精度高
- 多种转塔布局可选，适应不同客户需求
- 成熟的控制技术，应用广泛
- 高效稳定运转，故障率低
- 中高端配置，性价比突出

- H+L hydraulic system, Punch frequency 600times/min
- Patented technology of keeping-touch auto index, positioning accuracy
- Multi turrets to choose, adapt to different customers request
- Sophisticated control technology, widely applied
- Efficient and stable operation, low failure rate
- Middle and high-end configuration, outstanding cost performance



# HPH系列 数控转塔冲床

HPH Series CNC Turret Punch



## 转盘结构 Turret Structure

- 转塔采用高强度合金钢铸造后通过一次装夹精密加工而成，抗氧化及承载能力强，吸振及精密导向性能卓越，冲压过程中不易出现卡模、带料等现象，并有效降低使用过程中密集冲孔时板材变形过大的问题
- 配合精密加工的导向衬套，大幅提升模具实际使用寿命
- Turret processed through one-time clamp precision machining with high strength alloy casting steel, strong antioxidant and carrying capacity, excellent vibration absorption and precision-oriented performance, less tool stuck, strip or other phenomena, and effectively reduce the plate deformation when punching high-density holes
- Guide bushing by precision machining, significantly increases the tool life

## 送料机构 Feeding Structure

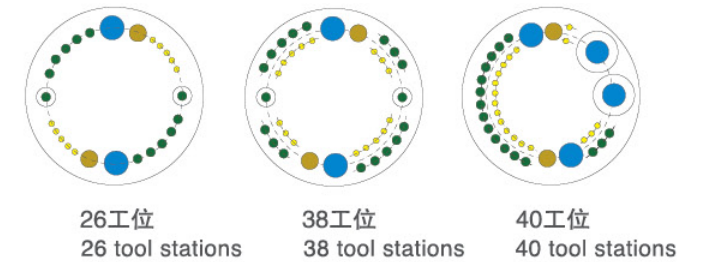
- 大行程双螺母高精度磨削滚珠丝杆，控制时无需采用分段补偿，运动定位精度更高，轴向承载能力较单螺母更高，运行噪音及阻力更小，滚珠丝杆综合寿命更长
- 标配气动摆动式高强度夹钳，结构成熟稳定，能够自适应板材变形，保护夹钳长期稳定运行
- Long stroke double-precision grinding ball screw rod without using segmented compensation during control, higher positioning accuracy and axial load carrying capacity than single rod, smaller noise and resistance, longer life time
- Standard swing type pneumatic clamps, mature and stable, can be adapted to sheet deformation to ensure the long term stable operation

## 液压系统 Hydraulic System

- 冲压频次达到600次/min
- 结构成熟，稳定性高
- 综合性价比高，具备成型功能
- Stroke rates of up to 600hits/min
- Compact design with high stability
- High performance punching with forming function

## 标准配置 Standard Configuration

- 数控系统选用西门子数控系统
- 冲压系统采用德国H+L公司液压驱动冲压系统
- 配置26工位转盘，2个旋转模位 (2B)
- 配置自动润滑系统、板料变形监控装置
- Siemens CNC Controller
- Hydraulic punching system from H&L Germany
- 26 station turret with 2 auto-index stations(2B station)
- Tool hoisting device, automatic lubrication and sheet deformation sensors



模位类别 Tool station category	标记 Symbol	26工位 26 tool stations		38工位 38 tool stations		40工位 40 tool stations		尺寸范围 Dimension range
		NO	AI	NO	AI	NO	AI	
A	●	10		16		18		ø3.0~ø12.7mm
B	●	10	2	16	2	16		ø12.7~ø31.75mm
C	●	2		2		2		ø31.75~ø50.8mm
D	●	2		2		2	2	ø50.8~ø88.9mm

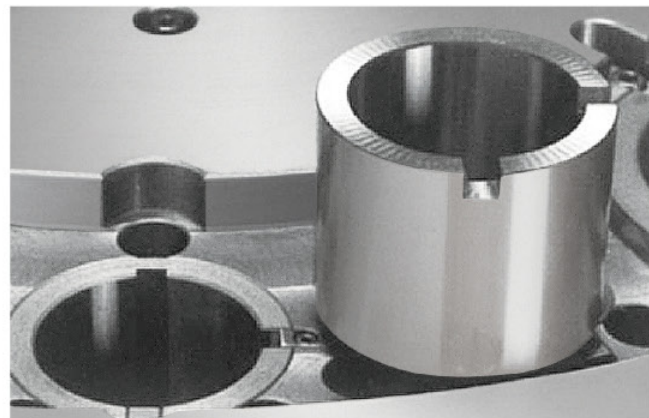
## HPH系列数控转塔冲床参数 Parameters of HPH Series CNC Turret Punch

参数 Parameter	单位 Unit	HPH-3044/5044	HPH-3047/5047	HPH-3048/5048	HPH-3057/5057	HPH-3058/5058
公称力 Normal pressure	kN	300/500	300/500	300/500	300/500	300/500
最大加工板材尺寸 (含一次再定位) Max.processing sheet size	mm	1250x2500	1250x4000	1250x5000	1500x4000	1500x5000
最大加工板材厚度 Max.processing sheet thickness	mm	6.35/8	6.35/8	6.35/8	6.35/8	6.35/8
	mm	4/6	4/6	4/6	4/6	4/6
一次冲孔最大直径 Max.punch diameter	mm	ø88.9	ø88.9	ø88.9	ø88.9	ø88.9
标配模位数 Standard tool station		26	26	26	26	26
冲孔精度 Punch accuracy	mm	±0.1	±0.1	±0.1	±0.1	±0.1
冲头冲压频次 Ram stroke rates	cpm	600/800	600/800	600/800	600/800	600/800
最高冲孔频率 (1mm步距 6mm冲程) Punch frequency (1mm step, 6mm punching stroke)	cpm	320/340	320/340	320/340	320/340	320/340
最高冲孔频率 (25.4mm步距 6mm冲程) Punch frequency (25.4mm step, 6mm punching stroke)	cpm	230/240	230/240	230/240	230/240	230/240
板材最大移动速度 Maximum speed of the plate movement	m/min	102	102	102	102	102
转盘转速 Turret speed	rpm	30	30	30	30	30
控制轴数 CNC axis		4(X, Y, T, C)	4(X, Y, T, C)	4(X, Y, T, C)	4(X, Y, T, C)	4(X, Y, T, C)
总功率 Total power consumption	kW	21	23	24	23	24
气源 Air resource	Mpa	0.6	0.6	0.6	0.6	0.6
外形尺寸 Overall dimension	长 L	mm	5600/5800	5600/5800	5600/5800	6100/6300
	宽 W	mm	2300	4000	5000	4000
	高 H	mm	2200/2300	2200/2300	2200/2300	2200/2300
重量 Weight	kg	14000/21000	15000/22000	16000/22500	18000/24500	19000/25500



# 转塔冲床 通用部件

Common Parts for Turret Punch



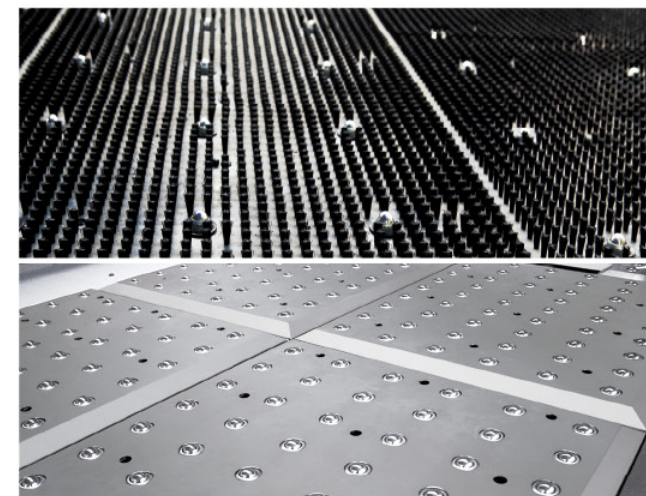
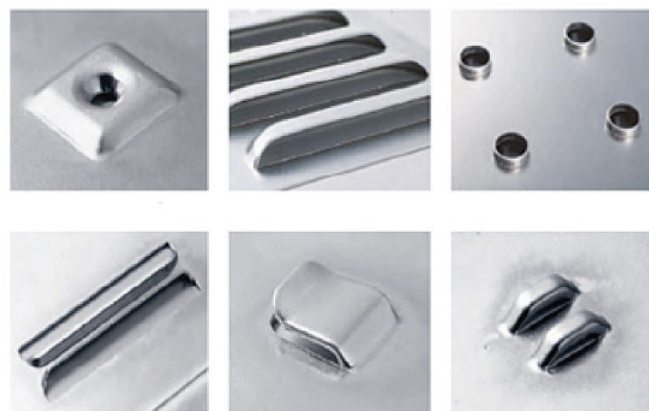
## 淬硬模套 Hardened Tool Sleeve

- 转塔长镶套结构导向性能高，主体采用淬硬后精密磨削，耐磨性好，更换方便
- Turret adopts a sleeve structure, high guidance quality, the main body uses precise grinding after hardening, wear resistance, easy to replace



## 长模具 Long Guide Tool

- 标配厚转塔长模具，结构导向性能良好，精密的伺服定位系统可以高质量的应用各种复杂的成型模具，高负载工作时有效吸收冲压振动，保护模具
- Long guide tool with high guidance for thick turret, precise servo positioning system suit a variety of complex high-quality forming tools, effectively absorb vibration during high-load punch to protect tools



## 标准工作台面 Standard Worktable

- 采用半随动毛刷工作台面结构，有效防止板材划伤，使用噪音低
- 推荐使用：  
0.5~3.0mm范围——毛刷衬钢球台面  
3.5~6.35mm范围——不锈钢台面
- Semi follow-up brush worktable structure, lower scratch and noise
- Recommended Use:  
Thickness range 0.5~3.0mm——Brush worktable with steel balls  
Thickness range 3.5mm~6.35mm——Stainless steel worktable



## 自动润滑 Automatic Lubrication

- 压力开关报警系统及时提醒系统内部压力不足报警
- 自动检测系统油位，防止无油润滑
- Pressure switch alarm system reminds customer when system pressure insufficient
- Automatic oil level detection system to protect system when no lubrication oil



## 板材变形监测 Sheet Deformation Detector

- 板材送料时异常弯曲变形时，检测开关反馈给操作系统，及时停止并排除故障
- When feeding sheet deformed, the detector switch will feedback to CNC system to stop and troubleshooting



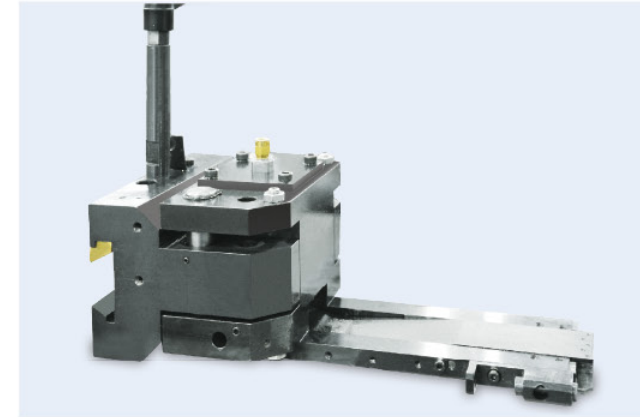
# 转塔冲床 通用部件

## Common Parts for Turret Punch



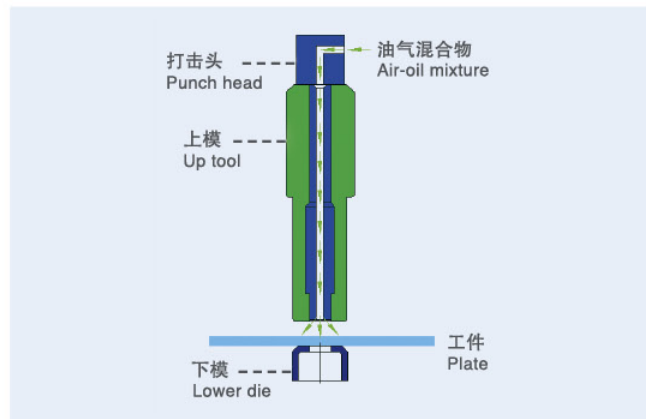
### 空调电柜 Electrical Cabinet Air Condition

- 有效抑制温度过高及粉尘的侵入，延长电器元件的使用寿命，保障控制系统长期稳定运行
- Effectively control high temperature and reduce dust invasion, extend the life of electrical components and ensure long-term stable operation



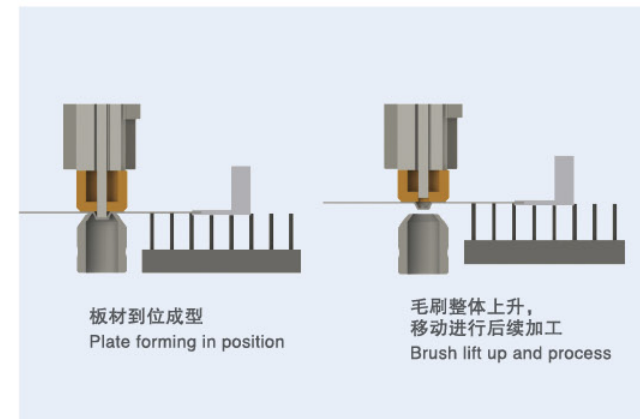
### 整体浮动夹钳 Complete Floating Clamp

- 可随板材上下整体浮动，快速适应台面工况变化，调整夹钳高度
- 精密导向，定位精度高
- Float up and down along with the whole sheet, quickly adjust the clamp height for changes in working conditions
- Precise guide, high positioning accuracy



### 油雾保护装置 Oil Mist Protection Device

- 定期对模具进行润滑，系统通过智能读取各模位冲压次数，来判断是否需要润滑，通过专用定量计控制单次润滑剂量
- 通过高压吹气降低冲芯温度，提高模具使用寿命
- Regularly lubricate the tool, the system determines whether it needs lubrication or not by reading the punch times, controls single lubricant amount through dedicated quantometer
- Low down the temperature of tool core through high pressure air blow, and increase tool working life



### 下成型部件 Down Forming Component

- 工件在进行向下成型加工完毕后，工件移动时，工作台面自动向上将板料托起后移动定位
- 有效降低刚性摩擦，提高板材表面光洁度
- After down forming, the worktable will lift up and position the sheet automatically when the workpiece moving
- Effectively reduce the rigid friction and guarantee sheet surface quality



### 交互式废料收集装置 Interactive Waste Collection Device

- 智能交互使用，提高工作效率
- 两只加大容量废料斗，减少清理废料小车频次，降低工作强度
- Intelligent interactive use, improve work efficiency
- Two high-capacity waste buckets, reduce the frequency of cleaning scrap and labor intensity



### 模具起吊装置 Tool Hoisting Device

- 人性化设计辅助换模装置大幅降低了人工操作强度，提升了安全性及不确定性，通过模具起吊可以轻松插拔重达10公斤的上模，自动顶下模装置又可以很方便的将下模取出
- You can easily exchange 10 kilograms up tools with the help of tool hoisting device, and easily remove the lower die, dramatically reduce the labor strength and enhance the safety



# 转塔冲床 数控系统

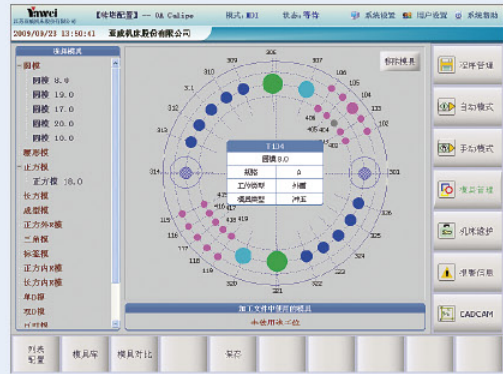
CNC Turret Punch Controller

# 转塔冲床 编程软件

CNC Turret Punch Programming Software

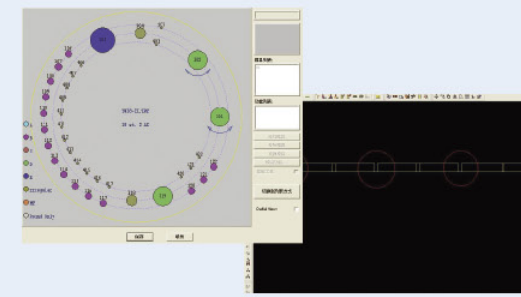
## YAWEI数控系统 YAWEI CNC Controller System

## YAWEI编程软件 YAWEI Programming Software



### 模具库管理 Tool Library Management

- 图形化模具配置，转塔模具配置信息一目了然
- 转塔配置更换时，以不同色彩提醒，避免出错
- Graphical configuration of tools, easy to get information of tools
- When replacing tools in turret, mark different color in case of any mistake



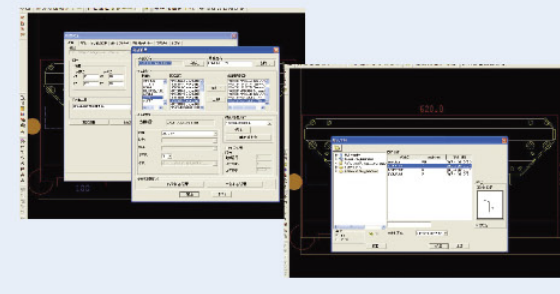
### 特征 Feature

- 刀具库和转塔配置的统一界面
- 手动留冲和微连接
- The same interface for tool library and turret configuration
- Manual punch and micro-joint



### 实时动态仿真 Real-time Dynamic Simulation

- 加工文件模具及板材信息列表显示，随时编辑文件程序
- 过程实时动态模拟实际加工状态，及时掌握加工进度，形象生动
- Display processing tool and sheet metal information in list, ready to edit the file and program
- Real-time dynamic simulation of the actual processing status, control the processing procedure vividly



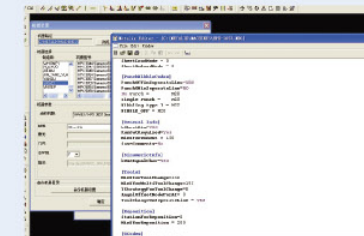
### 优势 Advantage

- 一套软件可适用于多种不同型号的数控转塔冲床
- 多种文件转换和导入的便捷性
- One software for a variety of punch machines and cutting works
- Convenient convert and import for multiple files

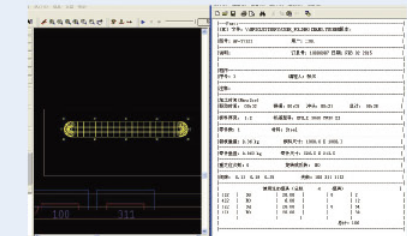


### 参数化管理 Parameter Management

- 系统配置、参数定义、报警记录、运行日志随时导出查看修改
- 文件管理系统实现外部加工文件轻松导入
- Export system configuration, parameter definition, alarm records, running logs at any time
- Import the external processing files easily



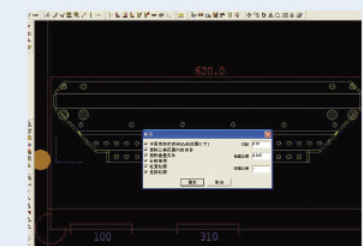
- 工业标准的G和M代码
- Industrial Standard G code and M code



- 自动生成报表
- Generate Report Automatically



- 自动或手动旋转对齐零件
- Automatic or Manual Nest



- 零件几何图形错误自动检测和校正
- Automatic Detection and Amendment



**江苏亚威机床股份有限公司**  
JIANGSU YAWEI MACHINE TOOL CO., LTD.

**中国**

江苏扬州市江都区黄海南路仙城工业园

邮 编: 225200

销售电话: 0514-86880518 86880528 86519118

售后服务: 0514-86880538 86519128 86519158

配件销售: 0514-86519148

传 真: 0514-86882218 86519188

网 址: [www.yawei.cc](http://www.yawei.cc)

电 邮: [sales1@yawei.cc](mailto:sales1@yawei.cc)

**INTERNATIONAL**

XIANCHENG INDUSTRIAL ZONE, HUANGHAI SOUTH ROAD

JIANGDU DIST. 225200 YANGZHOU, JIANGSU, CHINA

Sales hot line: +86-514-86880517 +86-514-86880518

Service phone: +86-514-86880517 +86-514-86880538

Part sales phone: +86-514-86519148

FAX: +86-514-86880521 +86-514-86882218

HTTP: [www.yawei.cc](http://www.yawei.cc)

Email: [sales2@yawei.cc](mailto:sales2@yawei.cc)



**Yawei 亚威**

以上两个标志皆为江苏亚威机床股份有限公司的商标  
The above two marks both are commercial brand of Jiangsu Yawei Machine Tool Co., Ltd.

产品不断改进, 样本如有变动恕不另行通知  
The contents are subject to change without prior notice



亚威公众微信  
YAWEI WeChat