

Chadwicks. of Boston

A Distinctive Apparel, Inc. Company
500 Bic Drive, Building 4, Milford, CT 06461

Order 24 hours every day @ chadwicks.com

source code

promo code

customer #



Scan this QR Code with your Smart Phone to instantly connect to our website.

PRSRT STD
U.S. Postage
PAID
Distinctive
Apparel Inc.

Please recycle this catalog
or pass it on to a friend.



Have you heard the news?

At the NEW Chadwicks.com,
you can shop by...

- Size
- Material
- Price
- Customer Ratings
- Color

Visit us today and see for yourself!



Hassle-Free Credit!

Apply online. Details pg. 34

A. Tiered Shell Necklace

Iridescent with glass bead accents. 18½" long, including clasp. Chain has a 2½" extender and secure lobster claw clasp. Imported. In Natural, Denim Blue and Sage.
Misses One Size #42653 \$14.99



B. Woven Basic Stretch Belt

Bonded genuine and faux leather front with adjustable buckle. 2¼" wide. Imported. In Cognac and Black.
Misses S/M(29"), M/L(32"), L/XL(36")
#42387 \$24.99

C. Elbow Sleeve Ballet Neck Tee

Irresistibly soft, high-quality knit top with a flattering neckline. Cotton/spandex. Machine wash. Imported. In 11 colors; more colors shown on page 68.
Misses S-XL 25" long
Petite PS-PXL 23½" long
Plus 1X,2X 27" long
#21183 (M, P) \$21.99
(Plus) \$24.99
Save \$6 / 2 for \$18.99 each
(\$21.99 each for Plus)

D. Crochet Maxi Skirt

Beautifully hand-crafted crochet skirt is finished with a feminine scalloped hemline. Drawstring elastic waist. Fully lined. 100% cotton. Hand wash. Imported. In 3 colors.
Misses S-XL 36½" long
#48724 \$49.99

E. Braided Thong Wedge Sandal

Details and color options shown on page 58. Imported.
#89892 \$34.99

Crochet
Maxi Skirt only
\$49⁹⁹

A-E

D

Coffee

Dark Navy

Natural

Classics you count on. Value you trust...for over 30 years.

Chadwicks. of Boston



Shop
the look
pgs. 68,
26, 58

back to
BASICS
essential summer styles
as low as \$16.99
+24 NEW
markdowns!

inside:
more petite,
tall and
plus sizes!



Hassle-Free Credit!

Apply online. Details pg. 34

SLIM *Away*

Dive into slimming cover-ups & suits from only **\$36.99**

A. 3/4-Length Sleeve Swim Cover-Up

Beautiful crochet swimsuit cover-up. Intricate detail along the V-neckline, sleeves and back. Side slits for movement. Pullover styling. Rayon. Hand wash. Imported. In 2 colors. Misses S/M-L/XL 35½" front; 37½" back
#42636 \$39.99

B. Paradise Shirred Swimsuit

A beautiful one-piece with a tummy-control lining to smooth your shape. Side shirring camouflages figure flaws. Full coverage bottom. Nylon/spandex. Lined. Hand wash. Imported. In Multi. Misses 8-16
#42587 \$49.99

Swim Cover-Up
\$39.99



Ruched Halter Skirtini
~~\$39.99~~
now FROM
\$36.99



C. Bandeau Faux Tankini

This charming swim outfit features a bandeau tankini top with a side-tie closure and full coverage bottom with tummy-control lining. Top features removable straps and soft cups. Nylon/spandex. Lined. Hand wash. Imported. In Multi. Misses 10-18 #42588 \$59.99

D. Ruched Halter Skirtini

Shape enhancing two-piece with tummy-control lining. Halter with twist front and ruching. Skirt; attached brief. Polyester/spandex; polyester/nylon/spandex lining. Hand wash. Imported. In 6 colors. Misses 4-18 Plus 16W-24W #58528 (M) \$39.99 NOW \$36.99 (Plus) \$44.99 NOW \$41.99

E. Wedge Thong Sandal by Boston Design Studio™

1½" stacked wedge. Manmade. Imported. In Black Patent, Silver, White, Bright Lime, Dark Navy, Chino, Gold and Morning Glory. Medium 6-10 whole/half sizes Wide 7-10, 11 whole/half sizes #89803 \$29.99 Save \$10 / 2 for \$24.99 each



Bust-enhancing soft-cup halter

Mesh tummy-control panel

Forgiving skirt

A

SLENDERIZING RUCHING



B

ADJUSTABLE DRAWSTRING



C

Tummy-Control
Suits from only
\$44⁹⁹



D

REMOVABLE STRAPS



A. **New!** Adjustable Strap One-Piece Swimsuit

Ruched bodice offers a slenderizing effect on this attractive bathing suit with soft cups. Nylon/spandex. Lined. Hand wash. Imported. In Multi. Misses 10-18
#42593 \$59.99

B. **New!** Ikat Slimming One-Piece Swimsuit

An Ikat print and a tummy-control mesh lining in both front and back combine for a lovely, slimming style. Surplice wrap body, adjustable side drawstring for a custom fit, ruching detail and soft cups. Scoop back. Nylon/spandex. Lined. Hand wash. Imported. In Multi. Misses 8-18
#42591 \$54.99

C. Paisley Ruched Halter Skirtini

Two-piece swimsuit with tummy-control lining offers a slimming silhouette. Halter-style top with twist front and slimming ruching. Full coverage swim skirt; attached brief. Polyester/spandex; polyester/nylon/spandex lining. Hand wash. Imported. In Pink Paisley Multi. Misses 4-18
#42580 \$44.99

D. **New!** Bandeau Ruffle One-Piece Swimsuit

A flirty front and back ruffle on the bandeau top and removable straps make this swimsuit a great addition to your summer wardrobe. Soft cups. Nylon/spandex. Lined. Hand wash. Imported. In Black. Misses 10-18
#42592 \$59.99

E. Embroidered Peasant Top

Light and breezy fit and fabric with embroidered detail at the back. Rayon voile. Hand wash. Imported. In White. Misses S-XL 26½" front; 27" back
#47846 \$44.99

F. Printed Boho Beach Shorts

Cool, crinkled fabric with a pull-on smocked elastic waist and pretty crochet trim. Rayon. Hand wash. Imported. In Black White. Misses S-XL 5½" inseam
#47626 \$29.99

Calypso Coral

Aqua

Hot Pink

Crochet Bodice
Maxi Dress only
\$49⁹⁹

*Follow the
Sun*

Breezy fabrics & effortless style... summer's never been more beautiful!

E
F

G



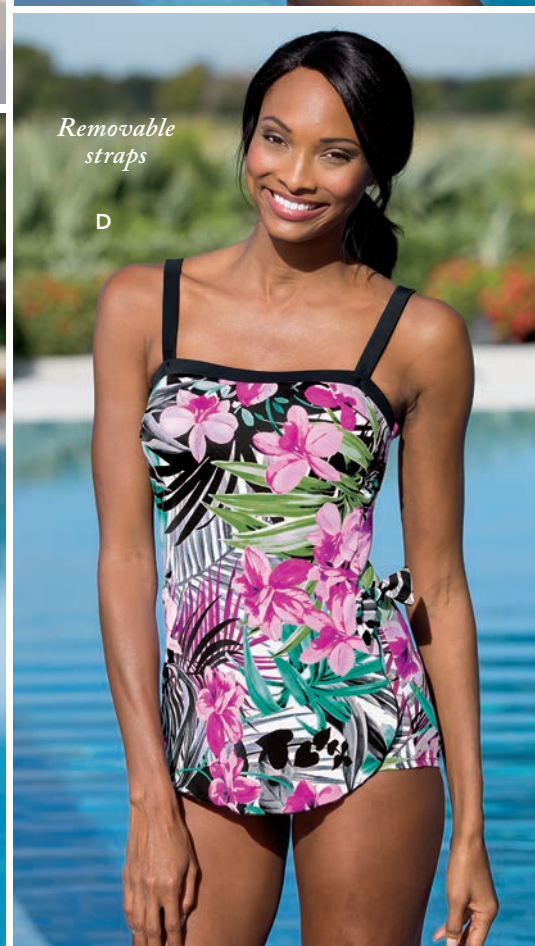
Shoes
pg. 72

G. **New! Crochet Bodice Peasant Maxi Dress**
Beautifully textured front bodice is machine-crocheted; smooth knit back bodice. Sweeping, tiered skirt and a scoop neckline and back create the outfit you'll wear all season. Elasticized, bra-friendly straps for comfort. Pullover styling. Rayon shell; cotton crochet body; cotton skirt lining. Machine wash. Imported. In 3 colors. Misses S-XL 52" long
#42651 \$49.99



A. Tank Dress Beach Cover-Up
This versatile scoopneck style can be worn as a dress or a cover-up. Knit pullover. Cotton/spandex. Machine wash. Imported. In 4 colors.
Misses S-XL 35" long
Plus 1X,2X 37" long
#50002
(M) \$19.99 (Plus) \$22.99

B. Side-Shirred Swimsuit
Tummy-control lining and shirring smooth your shape. One-piece style with full coverage bottom. Nylon/spandex; lined. Hand wash. Imported. In Multi.
Misses 8-16
#42590 \$49.99



C. Princess Seam Swim Dress
Swim in style with this ultra-slimming scoopneck swim dress with tummy-control lining. Princess seams for amazing shape and soft cups for support. Nylon/spandex. Lined. Hand wash. Imported. In Black Silver Multi.
Misses 12-18
#42583 \$59.99

D. Bandeau Sarong Swimsuit
This one-piece bathing suit flatters feminine curves. Tummy-control lining. Bandeau neckline offers up a glamorous look. Flirty side tie, removable straps and soft cups that offer shapely support and coverage. Nylon/spandex. Lined. Hand wash. Imported. In Multi.
Misses 10-18
#42594 \$54.99



E. Printed Ruched Halter Skirtini
Two-piece style has tummy-control lining, halter top with twist front and ruching. Full coverage swim skirt; attached brief. Polyester/spandex; polyester/nylon/spandex lining. Hand wash. Imported.
Misses 4-18
#42625 In Blue Multi. \$44.99
#41272 In Navy/White. \$49.99
NOW \$44.99

F. Ruched Solid Swimsuit
One-piece has a gathered neckline, soft cups with underwire, tummy-control front and a twist back. Polyester/spandex; polyester/nylon/spandex lining. Hand wash. Imported. In 3 colors.
Misses 4-18 #42548 \$39.99



Back views online at
CHADWICKS.COM



BUY 2,
SAVE \$6
from
\$21⁹⁹
each

A
Also in
Petite
& Plus

Nectarine

Key Lime Green

Aqua Mist

Dusty Indigo

White

A. V-Inset French Terry Top by Real Comfort®
Ultra-soft top with V-inset at neckline, raglan sleeves and slits at the hem. 100% cotton. Machine wash. Imported. In 5 colors.
Misses S-XL 27" long
Petite PS-PXL 25½" long
Plus 1X,2X 29" long
#42566 (M, P) \$24.99
(Plus) \$27.99
Save \$6 / 2 for \$21.99 each
(\$24.99 each for Plus)

B. Ombré Print French Terry Top by Real Comfort®
Discover a comfortable top in lightweight French terry with stunning ombré. Long sleeves; pouch pocket. 100% cotton. Machine wash separate. Imported. In 3 colors.
Misses S-XL 25" long
Tall ST-XLT 26½" long
#42549 \$34.99
NOW \$29.99



B
Also in
Tall

Aqua Mist

Nectarine

Indigo

realcomfort® by Chadwicks

C. Two-Pocket Scoopneck Knit Tunic by Real Comfort®
Easy, relaxed-fit silhouette in a wonderfully soft jersey knit. Detailed with a tipped scoopneck, ¾ sleeves and front patch pockets. Cotton/spandex/jersey. Machine wash. Imported. In 3 colors.
Misses S-XL 34" long
Petite PS-PXL 32½" long
Plus 1X,2X 36" long
#42565 (M, P) \$39.99 (Plus) \$44.99

D. Wide Waistband Leggings by Real Comfort®
Wide waistband offers a smooth fit. Cotton/rayon/spandex. Machine wash. Imported. In 4 colors.
Misses S-XL 28" inseam
Petite PS-PXL 26" inseam
Tall ST-XLT 31" inseam
#40534 \$19.99

E. Open Back Sneakers by Skechers®
Our sporty open-back sneakers are perfect for when you're on the go. With Memory Foam insoles, ribbon bungee laces and mesh upper, you'll wear these every day. 1" heel. Manmade. Imported. In Black, White, Grey and Navy.
Medium 6-10 whole/half sizes
#89813 \$61.99



E

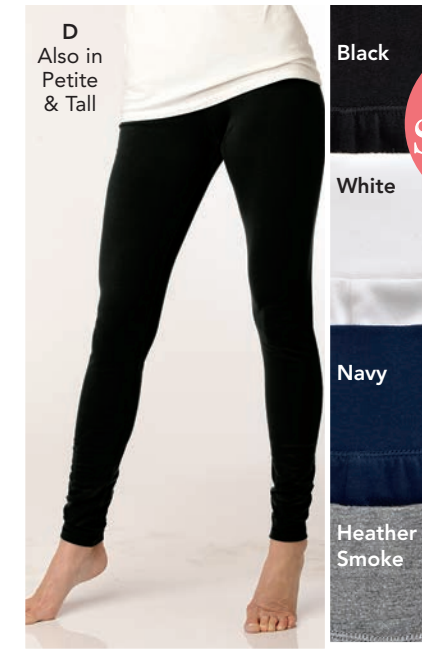


Real Comfort®
Two-Pocket
Tunic from
\$39⁹⁹



C

Shoes
pg. 59



D
Also in
Petite
& Tall

Black

White

Navy

Heather
Smoke

Leggings
only
\$19⁹⁹

★
"These leggings
are a **MUST**
for any wardrobe!"
Customer from Oklahoma



C
Also in
Petite
& Plus
D
Also in
Petite
& Tall
E

Ruched Crop
Leggings
~~\$19.99~~
now ONLY
\$16.99

A
B



Pockets

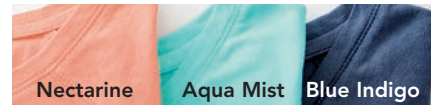
Ruched
detail

Shoes
pg. 8

A. Pouch Pocket Tunic by Real Comfort®

No wardrobe is complete without this comfy tee. Rayon jersey has a V-inset at neckline and front pouch pocket. Long sleeves. Rayon/polyester/cotton. Machine wash. Imported. In 3 colors.

Misses S-XL 28" long #42547 \$29.99



B. Knit Ruched Crop Leggings

Leggings have been transformed, thanks to flattering ruching on the calves. Smoothing waistband offers comfortable pull-on styling. Side pockets. Cotton/rayon/spandex. Machine wash. Imported. In Black and Navy.

Misses S-XL 21" inseam

#42650 ~~\$19.99~~ NOW **\$16.99**

C



Tank
pg. 60

French Terry
Skort only
\$24.99

Navy

White

Skort with
hidden shorts

C. French Terry Skort

This pull-on skort has attached shorts underneath for exceptional wearability. Drawstring waistband and side patch pockets. Cotton/polyester. Lined. Machine wash. Imported. In 2 colors.

Misses S-XL 17" inseam

#42642 \$24.99

D. Printed Wide Waistband Leggings

A smooth, flattering wide waistband and a fashion-forward print make these leggings a perfect wardrobe staple. Pair them with your favorite tunic top for a beautiful outfit in an instant. Polyester/spandex. Machine wash. Imported. In Black White Print.

Misses S-XL 28" inseam

#42677 \$34.99

D
E
F

Cami
pg. 74



E. Eyelet Crochet Skimmer by Skechers®

Eyelet lace and suede upper, Memory Foam insole, and slip-on ballet flat design. Flexible rubber traction outsole. 1/2" heel. In Natural, Black and White.

Medium 6-10 whole/half sizes

#89812 \$59.99



E



F. French Terry Hoodie by Real Comfort®

In the same comfortable French terry fabric as our wide leg pants, you'll live in this sweatshirt! Zip front style has drawstring hood and pouch pockets. Cotton/polyester. Machine wash. Imported. In Nectarine, White and Navy. Misses S-XL 25½" long #42562 \$34.99

G. French Terry Pant by Real Comfort®

A bestseller in lightweight French terry with a drawstring ribbed waist. 22½" leg opening. Cotton/polyester. Machine wash. Imported. In Nectarine, White, Navy, Heather Grey and Black. Misses S-XL 31" inseam
Petite PS-PXL 29" inseam
Tall ST-XLT 34" inseam
#42629 \$21.99



E
F
G

French Terry
Hoodie only
\$34.99

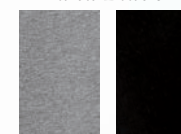
G
Also in
Petite
& Tall



French Terry
Pants only
\$21.99



Pants also available
in Heather Grey
and Black



NEW summer styles – \$59⁹⁹ each

These alluring new sundresses provide instant beauty... just add shoes!



Shoes
pg. 48

A. New! Sleeveless Gauze Ruffle Maxi Dress

Carefree crinkle fabric and a beautiful double ruffle detail at the neckline. Features a comfortable elastic waist with removable braided belt and pullover styling with side slits for ease of movement. Polyester. Fully lined. Machine wash. Imported. In Natural. Misses S-XL 57" long
#42731 \$59.99



Shoes
pg. 72

B. New! Coral Ikat Maxi Dress

Easy-wear style features a sweetheart neckline and a smocked bodice. Sleeveless. Pullover styling. Polyester; polyester lining. Machine wash. Imported. In Coral. Misses S-XL 56" long
#42710 \$59.99



C. New! Scarf Print Handkerchief Hem Dress

A soft knit top graciously combines with a flowing georgette print skirt for an alluring dress style. Modern hanky hem and bust darts for shape. Hidden side zip. Polyester/spandex top; lined polyester skirt. Machine wash. Imported. In Navy Coral. Misses 6-16 49" at longest point
#42732 \$59.99



Shoes
pg. 41

D. New! Border Print Dress

Scoopneck georgette dress with an uneven hemline and removable self-tie belt. Pullover styling. Polyester. Fully lined. Machine wash. Imported. In Denim. Misses 6-16 53½" at longest point; 40½" in front
#42733 \$59.99



BUY 2,
SAVE \$10
\$24⁹⁹
each



Floral Maxi
Dress only
\$59⁹⁹

E. New! Floral Maxi Dress by Nina Leonard™

Beautiful maxi dress with a crossover V-neck wrap top that meets a smooth band at the empire waist; band has a double row of ruching at back for a comfortable, flattering fit. Stunning floral placement print on front and back. Carefree, pullover styling. Polyester/spandex. Machine wash. Imported. In Navy Multi. Misses S-XL 54" long
#42734 \$59.99

F. Strappy Sandals by Boston Design Studio™

This pretty sandal features an adjustable ankle strap with an elastic inset behind the buckle for comfort. 3" covered heel. Padded sock. Manmade patent upper. Imported. In Black, Navy, Nude, White, Tea Rose and Sea Mist. Medium 6-10 whole/half sizes
#82112 \$29.99
Save \$10 / 2 for \$24.99 each

A. Bell Sleeve Knit Top

Boat neck; 3/4 bell sleeves. Cotton rib. Machine wash. Imported. In 5 colors; more colors and details on page 25. Misses S-XL 24" long
#48097 \$22.99
Save \$6 / 2 for \$19.99 each

B. New! Sunflower Print Skirt

Pretty sunflower motif and crocheted trim provide a stunning look. Finished with a pull-on drawstring elastic drop waist with crochet yoke and lace trim hem. Midi length. Fully lined. 100% cotton. Hand wash. Imported. In Blue Multi. Misses S-XL 31" long
#48280 \$39.99

Crochet Trim Skirt only
\$39.99

C. New! Embroidered Peasant Top

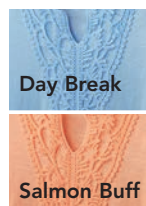
Stay cool in this breezy voile blouse with embroidered front and beading details. Split V scoopneck adds a feminine touch while side slits provide a roomy fit. Whipstitch detailing. Pair it with the coordinating shorts or your favorite pants. Rayon voile. Hand wash. Imported. In White. Misses S-XL 26½" front; 27½" back
#48279 \$44.99

D. New! Printed Boho Beach Shorts

Relaxed fit short with a pull-on smocked elastic waist, crinkle fabric and unique border print is a summer essential. Rayon. Hand wash. Imported. In Red. Misses S-XL 5½" inseam
#48265 \$29.99

A
B

C
D



Overlay Lace Top
~~\$24.99~~
now ONLY
\$19.99

E

E. Overlay Lace Elbow Sleeve Top

Lace overlay makes this top truly unique. Split neckline and side slits for movement. Cotton/ lightly textured knit. Machine wash. Imported. In 2 colors. Misses S-XL 26" long
#48158 \$24.99
NOW \$19.99

F. New! Lace Trim Tunic

With lace details at the sleeves, back yoke, shoulders and placket, this lightweight tunic defines femininity. Ultra-soft blouse features 3/4 sleeves, a scoop neckline with tie-front closure, shirttail hem and shirring at the center back and bust for a pretty shape. Layer this sheer tunic with your favorite cami. Rayon. Hand wash. Imported. In White. Misses S-XL 28" long
#48381 \$34.99

G. Classic Fit Bootcut Jeans

CLASSIC RISE. Comfortable stretch denim keeps its shape and feels great all day long! Fly front; rise sits at the natural waist. Bootcut with 19" leg opening. Cotton/polyester/spandex. Machine wash. Imported. In 2 colors. Misses 4-18 32" inseam
Tall 4T-18T 35" inseam
#40765 \$39.99

H. New! Lace Trim Print Chiffon Blouse

High-low hem blouse with intricate lace accents at the shoulders and back. Features a split V-neckline and a double-tiered front. Button-front styling. Polyester with polyester/cotton lace accents. Hand wash. Imported. In Light Blue. Misses S-XL 27" front; 31½" back
#48378 \$34.99

F
G

Medium Wash Indigo

G
Also in Tall

Shoes
pg. 31

LIGHT & EASY

*Light, flowing and fabulous styles
at easy-to-love prices!*

Sleeveless
Chiffon Blouse
\$34.99

See back
view online

G
H



You always get more at CHADWICKS.COM 15



A
Back view
online



B

C

Comfort Waist

DENIM

Introducing our new denim collection –
Flattering. Comfortable. Priced right.

Comfort Waist
Denim from
\$34⁹⁹

A. New! Ombré High-Low Hem Peasant Tunic

Allover print blouse with an attractive scoopneck and tie closure. Feminine lace detail at back yoke. Semi-sheer, 3/4-sleeve blouse can be layered with a cami. Polyester with cotton/nylon lace trim. Hand wash. Imported. In Blue Green.

Misses S-XL 26½" front;
29¾" back

#48382 \$39.99

B. New! Crochet Trim Bell Sleeve Blouse

Flowing, relaxed-fit blouse features a flattering A-line silhouette and beautiful machine-crochet overlay around the scoop neckline. Pullover styling. Polyester/ rayon; polyester crochet trim. Hand wash. Imported. In Poppy.

Misses S-XL 25½" long

#48385 \$39.99

C. New! Batik Print Blouse

Allover batik print combines with intricate lace accents in this feminine blouse style. Lace trim along the angel sleeves and placket. Scoop neckline with split V and a tassel tie closure. Polyester. Hand wash. Imported. In Blue Multi.

Misses S-XL 27" long

#48384 \$39.99



D



E



F

E,F

Dark Wash

True Medium
Wash

Shoes
pg. 59



F
G

Tank back
view online

Shoes
pg. 31

benefits

A touch of stretch for all-day comfort |

Smooth no-roll waistband |

Three must-have styles

D-F. New! Comfort Waist Denim

Get a smooth, comfortable fit all day long in these denim bottoms with a flattering wide waistband and a touch of stretch. Classic five-pocket styling. Cotton/polyester/spandex. Machine wash. Imported. In True Medium Wash and Dark Wash. (Skirt available in True Medium Wash only).

D. Skirt

Back vent. 22" long.

Misses 4-18

#48292 \$34.99

E. Shorts

20" leg opening.

11" inseam.

Misses 4-18

#48291 \$34.99

F. Crop Pant

16½" leg opening.

24" inseam.

Misses 4-18

#48290 \$39.99

G. New! Border Print A-Line Tank

Flattering A-line silhouette with a brilliant allover print. Scoop neckline in front; V-back with horizontal strap detail. Polyester. Machine wash.

Imported. In Red Blue.

Misses S-XL 27" long #48383 \$34.99

There's always more at CHADWICKS.COM 17

FRESH summer styles from \$59⁹⁹

Look beautiful in an instant with these effortless, irresistible styles!



A. New! Hand-Crocheted Sleeveless Dress

An alluring floral crochet motif sets this dress apart from the rest. Scalloped hemline, smocked bodice, elasticized waist and a flattering scoop neck. Pull-over styling. 100% cotton; cotton lining. Hand wash. Imported. In Indigo. Misses 4-18 50" long #42643 \$69.99

B. New! Chiffon Scarf Print Dress
Sheer illusion neckline, eye-catching scarf print, back keyhole closure detail and a hanky hem – this dress has it all. Removable self-tie belt and side slit for room to move. Pullover styling. Polyester; polyester lining. Machine wash. Imported. In Blue Multi. Misses 6-16 44" long #42671 \$59.99



Shoes
pg. 31



C. New! Crochet Trim Crinkle Pant Set

Scoop neck tank and ankle-length pants with a comfortable elastic waist and adjustable drawstring create the perfect outfit. Machine-crocheted trim accents the cuffs and hemline for a feminine touch. Crinkle texture is great for traveling. Rayon. Hand wash. Imported. In Indigo. Misses S-XL 27" inseam; 25½" top #42652 \$59.99



Shoes
pg. 13



F. Braided Thong Wedge Sandal by Boston Design Studio™

Metallic braid detail, slingback styling with adjustable buckle and elastic for easy on/off. 1½" heel. Manmade. Imported. In Tan, Bright Navy and White. Medium 6-10 whole/half sizes #89892 \$34.99

D. New! Sleeveless Smocked Waist Paisley Dress

Ultra-soft, pullover dress with surplice front and back, flowing skirt, bra-friendly straps and a shape-enhancing smocked elastic waist. Polyester; polyester lined. Machine wash. Imported. In White Paisley. Misses S-XL 54" long #42663 \$59.99



A-Line
Lace Dress only
\$69⁹⁹

★
“...This is one of the best.”
Customer from Maine

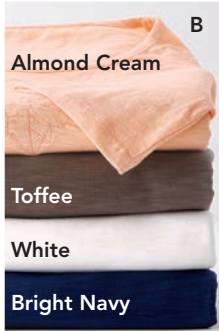
E. New Colors & Size! Long A-Line Lace Dress
Feminine and light lace with crinkled gauze godet inserts for added fullness. Crochet appliqué and keyhole detail. Nylon; cotton lining. Hand wash. Imported. In 3 colors. Misses S-XL 52" long Petite PS-PXL 49" long #42391 \$69.99

E
Also in
Petite
F



COMPARE ANYWHERE,
you always get more!

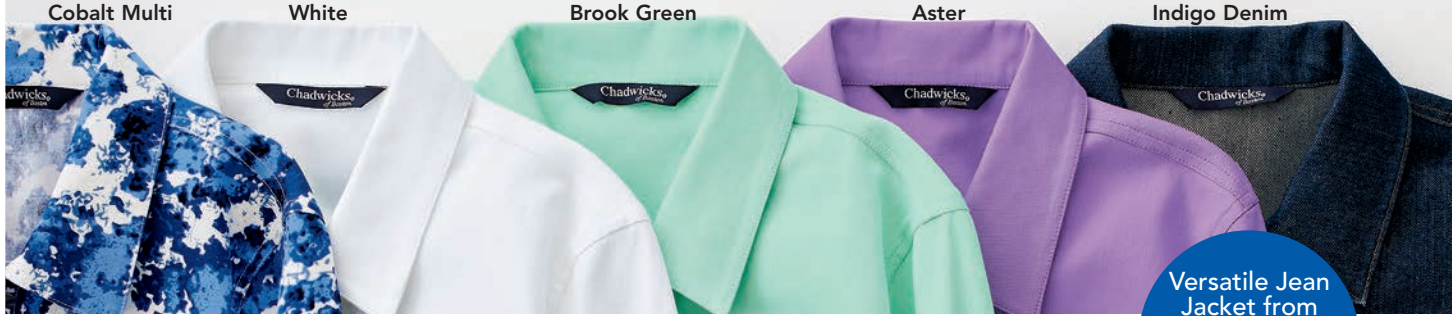
A. New! Cobalt Twill Sheath Dress
The versatile style you love in an amazing new print. Comfortable twill dress with bust and waist darts for shaping. Back vent and hidden zip. Cotton/spandex. Machine wash. Imported. In Cobalt Multi.
Misses 4-18 39" long
#42633 \$44.99



B. Embroidered Scalloped Hem Top
Easy fit, 3/4-sleeve knit top features a flattering scoop neckline and scalloped hem with pretty rose embroidery and cutout details. 100% cotton. Machine wash. Imported. In 4 colors.
Misses S-XL 26" long #48187 \$29.99

C. New! Crinkle Cotton Maxi Skirt
Pretty, pull-on style skirt with a relaxed, comfortable fit and feminine sweep. Features an elastic waist, adjustable drawstring with tassel and a finished hem. 100% cotton. Fully lined. Hand wash. Imported. In Yellow.
Misses S-XL 36" long #48289 \$49.99

Scalloped
Hem Top only
\$29⁹⁹



D. New Print! Colored Straight Leg Jean
FAVORITE RISE. Five-pocket styling in twill with a hint of stretch for ease. Button and zip fly; belt loops. Rise sits just below the natural waist. 16" leg opening. Cotton/spandex. Machine wash. Imported.
Misses 4-18 32" inseam
Tall 4T-18T 35" inseam
#48132 In 3 solid colors. \$39.99
NOW \$34.99
#48226 In Cobalt Multi. \$44.99



E. New Print! Versatile Jean Jacket
The perfect length to layer! In stretch denim and twill with great seaming detail, flap chest pockets and classic shank buttons. Cotton/spandex. Machine wash. Imported.
Misses S-XL 22½" long
Petite PS-PXL 21" long
Tall ST-XLT 24" long
#40916 In 4 solid colors. \$39.99
#48195 In Cobalt Multi. \$44.99
Petite not available in Cobalt Multi.



Versatile Jean
Jacket from
\$39⁹⁹

Breezy and Beautiful from \$39⁹⁹

New summer dresses with beading and lace for feminine flair.

A
E



B. New! Knit Tank Maxi Dress
Crafted of soft stretch knit fabric, this scoopneck pullover dress is as comfortable as it is beautiful. Sleeveless style with bra-friendly straps, patch pockets and side slits. Cotton/spandex. Machine wash. Imported. In 4 colors.
Misses S-XL 53" long
#42539 \$39.99

B



Shoes
pg. 69



C



Shoes
pg. 58

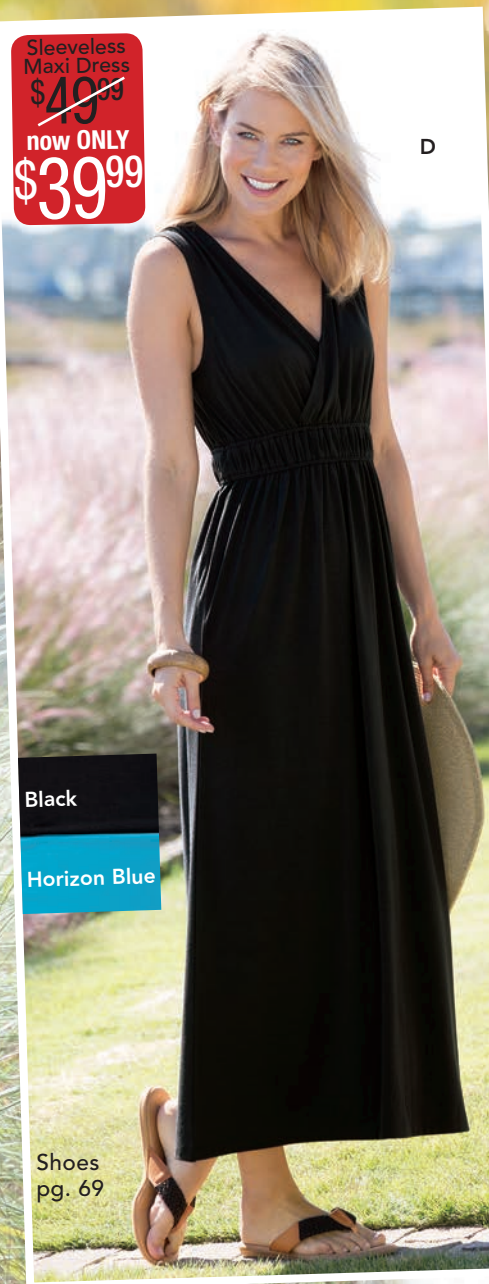
C. New! Hand-Beaded Paisley Print Dress by Bila
Delicate, machine-crocheted lace accents on both neckline and shoulders. Hand-beaded neckline detail creates a truly sensational dress. Ties in back for an adjustable fit. Sleeveless with pullover styling. Rayon with 100% cotton inset. Hand wash. Imported. In Blue.
Misses S-XL 38½" long
#42665 \$49.99

D. New! Sleeveless Ruched Knit Maxi Dress

Stretch ruching detail on the waist and a surplice neckline offers a slimming silhouette. Pullover dress has bra-friendly straps. Polyester/rayon/spandex. Machine wash. Imported. In Horizon Blue and Black.
Misses S-XL 50" long
#42538 \$49.99 **NOW 39.99**

Sleeveless
Maxi Dress
~~\$49.99~~
now ONLY
\$39.99

D



Black

Horizon Blue

Shoes
pg. 69

E

BAMBOO



E. Open Toe Strappy Platform Sandal by Bamboo®

This attractive sandal features an adjustable ankle strap with an elastic inset behind the buckle and a padded insole for comfort. Beautiful woven straps. 4" heel with 1½" platform sole. Manmade. Imported. In Chestnut and Black.
Medium 6-9, 10 whole/half sizes
#89927 \$34.99

Floral Cotton
Peasant Dress
\$59.99

E
F

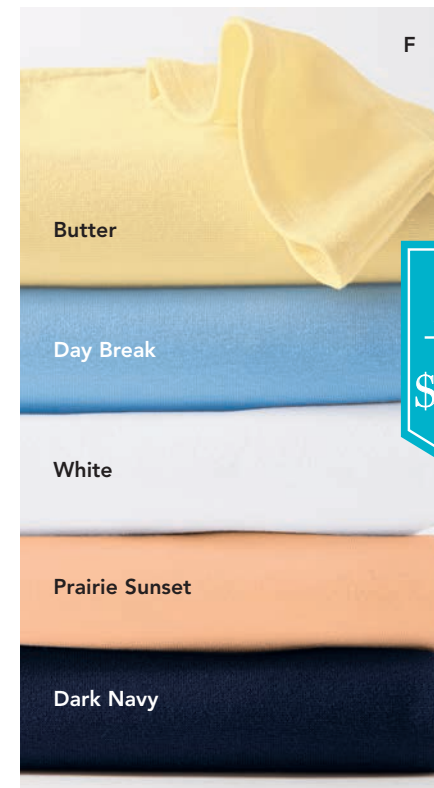


F. New! Floral 100% Cotton Peasant Dress

Sweet scoopneck dress has cap sleeves, a smocked elastic waist, sweeping skirt with godet panels and a self-tie front. Pullover styling. 100% cotton. Skirt lined in 100% cotton. Machine wash. Imported. In Floral Multi.
Misses S-XL 50" long
#42675 \$59.99

Top Choice

Our cotton rib tops provide a modern fit and keep their shape.



BUY 2,
SAVE \$6
only
\$19.99
each

F. Bell Sleeve Knit Top

Details like a flattering boat neck and 3/4 bell sleeves complete the look of this charming top. Cotton rib creates a modern fit and returns to its original shape after being stretched. Machine wash. Imported. In 5 colors.

Misses S-XL 24" long

#48097 \$22.99

Save \$6 / 2 for \$19.99 each

G. New! Poppy Print Godet Skirt

Full godets make for an amazing sweep. Smocked elastic waistband for comfort. Midi length. 100% cotton. Machine wash. Imported. In Red Multi.

Misses S-XL 32" long

#48198 \$39.99

H. Metal Hardware Stretch Belt

Wear this versatile belt on your hips or at the waist; it's a cinch to style it either way. Elastic back insert for comfort and fit and striking metal hardware with a braided look that hooks to close. Manmade. Imported. In Cognac and Black.

Misses S/M, L/XL

#89846 \$24.99



A. Lace Accent Knit Henley

Lace shoulder details add a beautiful twist to the classic Henley. Scoopneck style with a button-front half placket and 3/4 sleeves. Cotton rib offers up a flattering fit and keeps its shape wear after wear. Machine wash. Imported. In 3 colors.

Misses S-XL 25" long
#48146 \$24.99

B. Flat Front Crop Pants

FAVORITE RISE. Crop pants sit just below the natural waist and have a contour waist with hook-and-bar closure. Front pocket, button back pockets and straight leg styling with a 15" leg opening. Cotton/spandex. Machine wash. Imported. In 3 colors.

Misses 4-18 26" inseam
#48184 \$39.99

C. Triangle Vamp Sandal by Boston Design Studio™

So great you'll want them in every color. Elastic at buckle for easy on/off, metallic grommet detail, 3/4" stacked wedge bottom. Manmade. Imported. In Honey Wheat, Caspian and Ash Rose.

Medium 6-10 whole/half sizes
#89814 \$34.99

D. Square Neck Knit Tank

Discover a tank that looks great alone or layered. Wider width, bra-friendly straps, double layer front for extra coverage and a face-framing square neckline complete the look. 100% cotton rib. Machine wash. Imported. In 3 colors.

Misses S-XL 25" long
#48237 \$19.99

E. Three-Button Detail Skort

Give the illusion of a skirt with the comfort of shorts. Exposed shorts at back with 21" leg opening. Hidden side zipper. Cotton/spandex. Machine wash. Imported. In 3 colors.

Misses 4-18 19" skirt front; 9" shorts inseam
#48235 \$34.99



Shoes
pg. 45

Smocked waistband

Tummy-Control
Pants only
\$39⁹⁹
each

REAP THE *Benefits*

Shape Benefits®
cotton/spandex twill
pants are now available
in 2 lengths and
enhanced with a hidden
tummy-control panel.



Tummy-control panel
trims your figure.

Shoes
pg. 31

ANKLE

CROP

A-B. Tummy-Control Pants by Shape Benefits®
FAVORITE RISE. Pants feature a hidden tummy-control panel that
slims, contour waist with hook-and-bar closure and a rise that sits
just below the waist. Front coin pocket and back besom pockets.
Cotton/spandex. Machine wash. Imported. In 4 colors.

A. Ankle Pants
14½" leg opening.
Misses 4-18 28½" inseam
#48186 \$39.99

B. Crop Pants
15" leg opening; side slit
at the ankle.
Misses 4-18 26" inseam
#47039 \$39.99

Compare anywhere...you always get more!



Necklace on
back cover



*Wear open
or closed*



100% Cotton
Crochet Cardigan
\$49⁹⁹



Worn
with cami
pg. 74

C. Crossover High-Low Hem Tank
Open V-neckline with sheer overlay and high-low hemline creates a beautifully soft top.
Back is all knit with a slit for an easy fit. Rayon/spandex knit with polyester georgette
overlay. Machine wash. Imported. In 3 colors.
Misses S-XL 24½" front; 29¾" back #47902 \$34.99

D. New! Botanical Print Asymmetrical Hem Knit Tunic
Luxurious softness meets an enchanting print in this drapey, wrinkle-resistant top. Tu-
nic features ¾ sleeves, asymmetrical seaming at the front and a drop seam in back.
Pullover styling. Polyester/spandex. Hand wash. Imported. In Orange.
Misses S-XL 31" long #48275 \$39.99

E. 100% Cotton Crochet Cardigan
This beautiful crochet-style sweater is certain to be your favorite new layering piece.
Features hook-and-eye closure, long sleeves and pairs perfectly with your favorite cami.
100% cotton. Hand wash. Imported. In 4 colors.
Misses S-XL 22" long #48189 \$49.99

A. New! Floral Print Sleeveless Pocket Dress
Functional pockets for added style. Empire waist has stitched down inverted pleats to flatter your figure. Princess seaming for shape. Hidden back zip. Cotton/spandex; cotton lining. Machine wash. Imported. In Sunset Coral Floral. Misses 4-18 43" long #42533 \$59.99

B. New! Floral Fit & Flare Midi Dress
Ultra-flattering fit-and-flare silhouette with a scoopneck and full skirt. Princess seams offer beautiful shape. Sleeveless with hidden back zip. Linen/rayon; polyester lining. Machine wash. Imported. In Pale Yellow Floral. Misses 4-18 45" long #42545 \$59.99

Charming Dresses

Summer styles that love every body from \$49.99!



Your choice!
Print Dresses only
\$59⁹⁹



Shoes
pg. 41



Shoes
pg. 31

C. New! Short Sleeve Faux Wrap Cotton Dress
Charming dress style with an A-line shape that looks beautiful on every body. Surplice faux wrap top features a side tie and side zip, pleat detail at the waist and is fully lined. Cotton/spandex. Polyester lining. Machine wash. Imported. In 2 colors. Misses 4-18 42" long #42541 \$49.99

Dark
Navy

Pine



Blue
Bonnet

D

Button Front
Shirt Dress
~~\$59⁹⁹~~
now ONLY
\$49⁹⁹



Fruit Punch
Multi

D

Shoes
pg. 45



D

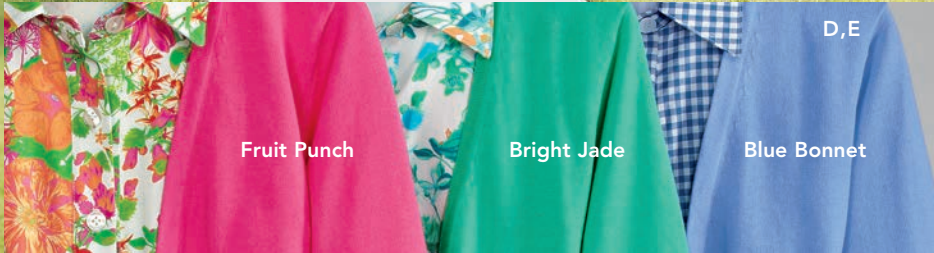


D
E

Bright Jade Multi

D. Button Front Shirt Dress
This shirt dress puts the "fun" in functional. Features a button front, removable belt and convenient side pockets. Fruit Punch Multi and Bright Jade Multi in cotton/spandex. Blue Bonnet in cotton/linen. Machine wash. Imported. In 3 colors. Misses 4-18 45½" long #42634 \$59.99
NOW \$49.99

E. Bolero Shrug
Cropped cardigan sweater is the perfect layer over your favorite dresses and camis. Fine gauge knit with V-neckline, open-front styling and 3/4 sleeves. 100% cotton. Hand wash. Imported. In 3 colors. Misses S-XL 17" long #42635 \$29.99



Fruit Punch

Bright Jade

Blue Bonnet

D,E

SUMMER *dreams from* \$49⁹⁹

Effortless dresses paired with strappy sandals create perfect summer style.



A. Long A-Line Knit Dress

Pullover-style dress with flattering A-line silhouette in a beautiful knit with just enough stretch. Pleat details, bra-friendly straps and pockets complete the look. Polyester/rayon/spandex. Machine wash. Imported. In 4 colors.

Misses S-XL 52½" long *Petite* PS-PXL 49½" long *Plus* 1X,2X 52½" long
#42542 (M, P) \$49.99 (Plus) \$54.99

B. New! Embroidered Cotton Maxi Dress

Alluring sleeveless dress with a stylish, flattering surplice top, tiered skirt and intricate embroidered and lace appliqué details. Hidden side zip. 100% cotton; cotton voile skirt lining. Machine wash. Imported. In Sand Shell.

Misses 4-18 52" long
#42641 \$49.99

C. Pintuck Linen Maxi Dress

Light and easy dress with pintuck pleating detail. Long A-line silhouette. Side zip. Print is linen/rayon, Chambray is linen/cotton. Machine wash. Imported. In 2 colors.

Misses S-XL 52" long *Petite* PS-PXL 49" long
#80003 \$49.99



Shoes
pg. 59



D. Button Front Floral Dress

The style you love in charming floral prints. Flattering and feminine, this long A-line dress has a scoop neck, full button front and bra-friendly straps. Pleats at the waist add a touch of fullness to the skirt. Cotton/spandex. Machine wash. Imported. In 3 colors.

Misses 4-18 52" long
Petite 2P-16P 49" long
#42544 \$59.99

E. Elbow Sleeve Shrug Sweater

Cropped, shrug-style cardigan with ribbed trim. 100% cotton. Machine wash. Imported. In 4 colors.

Misses S-XL 18" long
#47058 \$29.99 **NOW \$24.99**

F. Triple T-Strap Wedge by Boston Design Studio™

Stacked wedge bottom adds comfort and stability. Caged triple T-strap offers a secure fit with adjustable buckle and elastic for easy on and off. Padded sock. Manmade. 2½" stacked wedge bottom. Imported. In Black, Cognac and French Blue.

Medium 6-10 whole/half sizes
#89808 \$39.99



Boyfriends YOU'LL LOVE

BUY 2,
SAVE \$10
only
\$34.99
each

Black

Red Lacquer

Oxford Tan

Dark Navy

Honey Wheat

Morning Glory

32



A
Also in
Petite & Plus
B
Also in
Tall

the VEST

- Layers beautifully
- Relaxed fit
- In 6 colors
- With pockets
- Tunic length

A. Knit 3/4 Sleeve Scoopneck Tee

Details and colors shown on page 68. Imported.

#66590

(M, P) \$21.99

(Plus) \$24.99

Save \$6 / 2 for \$18.99 each
(\$21.99 each for Plus)

Shorts
pg. 67

B. Boyfriend Sweater Vest

Everything you love about our Boyfriend Cardigan sweater – now in a longer length vest. Features mid-weight cotton with a V-neckline, relaxed fit and just a touch of shaping. Two front pockets. Machine wash. Imported. In 6 colors.

Misses S-XL 30" long

Tall ST-XLT 31½" long

#48239 \$39.99

Save \$10 / 2 for \$34.99 ea.

C. Poplin Boyfriend Tunic Shirt

Button-front shirt in a relaxed, boyfriend-style fit with a hint of stretch. Chest pockets, side slits. Cotton/spandex. Machine wash. Imported. In White.

Misses S-XL 31" long

Petite PS-PXL 29½" long

Tall ST-XLT 32½" long

Plus 1X,2X 33" long

#13170 (M, P, T) \$29.99

(Plus) \$34.99

D. Long Length Boyfriend Cardigan

Our best-selling Boyfriend Cardigan now in a longer length with patch pockets. This relaxed fit, V-neck cardigan sweater is easy to layer over everything...tees, blouses, dresses and more. 100% cotton. Machine wash. Imported. In 8 colors.

Misses S-XL 30" long

Tall ST-XLT 31½" long

#48263 \$44.99

Save \$10 / 2 for \$39.99 ea.

E. New! Alex Relaxed Fit Boyfriend by JAG® Jeans

Boyfriend jeans with five-pocket styling and a touch of stretch. Coin pocket and cuffs feature charming ribbon trim detailing. Fly front with button closure. 14" leg opening. Cotton/spandex. Machine wash. Imported. In 2 colors.

Misses 4-16

30" inseam (unrolled)

#48236 \$79.50

The Boyfriend
Cardigan has two
NEW friends: a
longer length cardigan
and a versatile vest —
both with pockets.

Buy any 2 sweaters in this
collection and save \$10!
(includes card pg. 74)

C
Also in
Petite, Tall
& Plus



E

Rock Water Blue

White

D
Also in
Tall
E



the longer CARDI

- Tunic length
- Easy layering
- Now with pockets
- Dress up or down

Belt
pg. 25

Shoes
pg. 58

Wear
cuffed
up or
down

Blue Green

Royal Blue

Aster

Butter

White

Dark Navy

Oxford Tan

Black

BUY 2,
SAVE \$10
only
\$39.99
each

& PLACING ORDERS CUSTOMER CARE

CHADWICKS.COM IS ALWAYS OPEN!

Order anytime at chadwicks.com

Email customer care at service@cs.chadwicks.com

CALL TOLL FREE: 1-877-330-3393

(Operadoras que hablan Español para su conveniencia)

M-F 8:00 a.m. - 1:00 a.m. ET (5:00 a.m. - 10:00 p.m. PT)

Sat. 8:00 a.m. - 11:00 p.m. ET (5:00 a.m. - 8:00 p.m. PT)

Sun. 10:00 a.m. - 7:00 p.m. ET (7:00 a.m. - 4:00 p.m. PT)

Closed Holidays

Customer Care: M-F 9:00 a.m. - 11:00 p.m. ET and Sat. 9:00 a.m. - 9:00 p.m. ET.
We accept VISA, MasterCard, American Express, Discover and Chadwicks of Boston credit cards. Cash, checks and money orders are not accepted.

OUR PROMISE TO YOU

We know you'll love your purchase, but just in case you don't, our policy is simple:

You may return any merchandise within 30 days and receive a full refund on the price you paid (less any shipping charges), or take up to 90 days to decide and receive a merchandise credit toward your next purchase. If you would like to exchange an item, we will not charge you for shipping your new item.

Please include your shipping invoice and only return merchandise that has not been worn, washed or altered and is in the original packaging. Items returned that show signs of wear may impact the amount of the refund or merchandise credit. Original shipping charges are non-refundable.

For your convenience, a prepaid return label is included with your order (cannot be used outside the 48 contiguous United States). Visit chadwicks.com for detailed instructions on how to return or exchange merchandise.

SHIPPING & HANDLING

STANDARD DELIVERY: Will arrive within 4-7 business days to the contiguous US, AK*, HI* and PR*. Shipments to other US territories, APOs, and FPOs, please expect 10-12 business days for delivery.

EXPRESS DELIVERY: Will arrive within 2-3 business days when ordered by 2:00 p.m. ET. This delivery is only available in the contiguous USA. Additional charge of \$13.99.

SUPER-FAST DELIVERY: Will arrive within 1-2 business days when ordered by 2:00 p.m. ET. This delivery is only available in the contiguous USA. Additional charge of \$22.99.

INTERNATIONAL SHIPPING: Visit chadwicks.com for details.

Shipping & Handling	total	fee	total	fee
	up to \$19.99	\$7.99*	\$80 - \$99.99	\$14.99*
	\$20 - \$39.99	\$9.99*	\$100 - \$119.99	\$16.99*
	\$40 - \$49.99	\$10.99*	\$120 - \$149.99	\$18.99*
	\$50 - \$79.99	\$12.99*	over \$149.99	\$20.99*

*For shipments to AK, HI and US territories, a \$3 surcharge will be added to the Standard Delivery fee. For shipments to MA and CT, please add the applicable state taxes to taxable merchandise only.

MAIL PREFERENCE SERVICE: Occasionally, we make our customer list available to a few carefully screened firms offering products that may be of interest to you. If you prefer not to receive such mailings, your address is incorrect or you are receiving duplicate catalogs, please cut your mailing label from the back cover of your catalog and send it to: Chadwicks Mail Preference Service, 42 Thomas Patten Drive, Randolph, MA 02368.

Chadwicks of Boston does not rent, sell or exchange your email address with third parties. If you wish to opt out of receiving Chadwicks promotional emails, simply click the "unsubscribe" link found at the bottom of any email, or contact customer care at 1-877-330-3393.

SIGNATURE PANT FITS

MODERN RISE: Sits below the natural waist; 10" front rise

FAVORITE RISE: Sits below the natural waist; 10½" front rise

CLASSIC RISE: Sits at the natural waist; 11" front rise

KATHERINE FIT: Modern rise and relaxed fit through hips

AUDREY FIT: Modern rise and slim fit through the hips

DIANE FIT: Classic rise, straight fit through hips and hidden tummy-control panel

MARILYN FIT: Favorite rise, contoured no-gap waist and a roomier fit through hips

FIND YOUR PERFECT FIT

Measure your body wearing only undergarments. If your measurements fall between sizes, order the next size up. Visit chadwicks.com for more detailed information on sizing.

Misses, Petite & Tall Sizes				
Misses sizes are fit for women 5'4" - 5'7"				
Petite sizes are fit for women 5'4" & under				
	size	bust	waist	hips
XS	2	33½"	26½"	35½"
	4	34½"	27½"	36½"
S	6	35½"	28½"	37½"
	8	36½"	29½"	38½"
M	10	37½"	30½"	39½"
	12	39"	32"	41"
L	14	40½"	33½"	42½"
	16	42"	35"	44"
XL	18	44"	37"	46"
	20	46"	39"	48"

Plus Sizes				
Fit for women 5'4" - 5'7"				
	size	bust	waist	hips
1X	16W	44"	37"	46"
	18W	46"	39"	48"
	20W	48"	42"	50"
2X	22W	50"	44"	52"
	24W	52"	46"	54"
3X	26W	54"	48"	56"



Instant Credit!

Apply now, shop today, earn rewards. Subject to credit approval. Comenity Bank issues Chadwicks credit card accounts. Details at chadwicks.com.

PRETTY PLEASE \$500 GIFT CARD GIVEAWAY

We're giving away a \$500 Chadwicks Gift Card each month **May 2016-August 2016**. Enter now at chadwicks.com!

No purchase necessary. Sweepstakes begins at 12:00 a.m. ET **May 1, 2016** and ends at 11:59 p.m. ET on **August 31, 2016**. Odds of winning depend on number of entries received. Gift cards are redeemable only for merchandise offered by Chadwicks.

Sponsor: Distinctive Apparel, Inc.

View complete contest rules at chadwicks.com.

Shift into NEUTRAL

Effortlessly elegant & very versatile.



A. New! Two-Tone Lace Sweater Shell

This fine gauge sweater knit shell is luxuriously soft and has intricate two-tone lace detail on the front and back. Rayon/nylon. Hand wash. Imported. In Black.

Misses S-XL 26½" long **#48293 \$39.99**

B. New! Stargazer Lily Maxi Skirt

Beautiful and breezy, this maxi skirt makes a delightful addition to your wardrobe. Lightweight skirt has a comfortable, pull-on elastic waist and a full sweep. Polyester. Hand wash. Imported. In Black Floral.

Misses S-XL 41" long **#48287 \$39.99**



C. New! Elbow Sleeve Scoopneck Top

Soft, easy-wear top has a seamless scoop neckline and is double layered in front for superior coverage. Rayon/spandex. Machine wash. Imported. In White and Lilac Mist (shown on page 54).

Misses S-XL 25" long **#48262 \$29.99**

D. New! Lace Detail Skirt

Drop waist skirt has crochet appliqué, a lace hemline and crinkle rayon panels. Hidden side zip; hook-and-eye closure. Cotton/rayon/polyester; cotton lining. Hand wash. Imported. In Taupe.

Misses 4-18 26" long **#48288 \$49.99**

the Boyfriend LINEN BLAZER

A customer favorite, now with a streamlined lapel, longer length and double welt pockets.

A. Linen Long Length Boyfriend Blazer

The longer length "boyfriend" style blazer you love, in the linen you adore. Princess seams add the perfect amount of shape. Two button closure. Double welt pockets. Linen/rayon; polyester lining.

Machine wash or dry clean. Imported. In 7 colors.

Misses 4-18 29" long

Petite 2P-16P 27½" long

Tall 4T-18T 30½" long

Plus 16W-24W 29" long

#48111 (M, P, T) \$39.99 (Plus) \$44.99

*Casual with
boyfriend jeans
pg. 33*

A

*Polished with
twill pants
pg. 26*

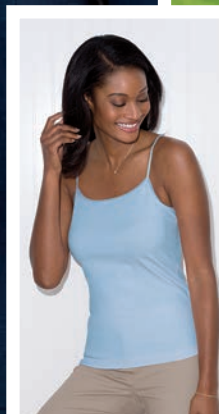
A

features

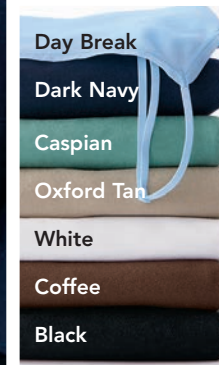
- Longer length
- Narrow lapel for an updated look
- Princess seams for shaping
- Fully lined

Boyfriend
Linen Blazer in
Misses, Petite, Tall
& Plus from

\$39⁹⁹



*Layer with
our matching
cami pg. 74*



A. Short Sleeve Cardigan

The perfect layer! Fine gauge sweater with V-neckline and full button front. 100% cotton. Machine wash. Imported. In 6 colors.

Misses S-XL 25½" long
Tall ST-XLT 27" long
#40617 \$34.99

Save \$10 / 2 for \$29.99 each

BUY 2,
SAVE \$10

only
\$29.99
each

A
B
C

B. Delicate Organza Trim Cami

Scoop up this layering essential in every color! Comfortable jersey knit camisole with adjustable straps is finished with organza trim at the neckline. Cotton/spandex. Machine wash. Imported. In 14 colors; more colors shown on page 74.

Misses S-XL 24" long
#40533 \$16.99

Save \$4 /
2 for \$14.99 each



Shoes
pg. 59

C. Linen Pencil Skirt

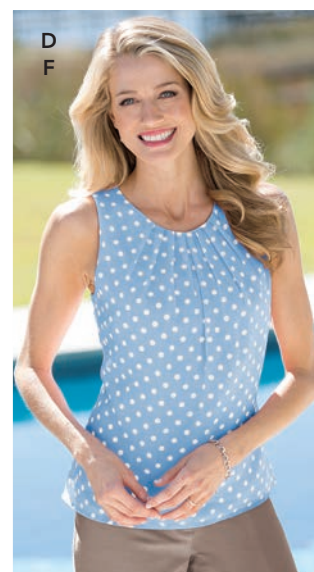
Classic slim fit pencil skirt in our signature linen/rayon blend. Fully lined in polyester. Back zip. Back vent. Machine wash. Imported. In 7 colors.

Misses 4-18 24" long
Petite 2P-16P 22" long
Tall 4T-18T 27" long
#40913 \$29.99

D. Dot Print Sleeveless Blouse

Flowing georgette fabric is fully lined. Pretty pleated neckline with buttoned keyhole back. Polyester. Machine wash. Imported. In 3 colors.

Misses 4-18 25" long
#48119 \$29.99



Marled
Yarn Sweater
\$49.99

E. Open Stitch Two-Tone Sweater

Thick and thin marled yarns add dimension to this richly textured cotton sweater. Flattering soft V-neckline, 3/4 sleeves and side slits complete the look of this gorgeous pullover style. 100% cotton. Hand wash. Imported. In 4 colors.

Misses S-XL 24" long #48129 \$49.99



F
Also in
Petite
& Tall

F. Wide Leg Linen Pants

CLASSIC RISE. Flattering contour waist with hook-and-bar closure. Rise sits at the waist. Besom pockets in front. 22" leg opening. Linen/rayon. Machine wash. Imported. In 7 colors (White is fully lined in polyester).

Misses 4-18 32" inseam
Petite 2P-16P 30" inseam
Tall 4T-18T 35" inseam
#47072 \$39.99

Wide Leg
Linen Pants
\$39.99



Shown with
matching
cami

linen shop

B
E
F



A

Paris-inspired
print

**A. New! Sleeveless
Paris Print Sheath**

From the Eiffel Tower to the River Seine, get the silhouette you love in a unique Paris-inspired print. Seaming for shape. Back zip. Cotton/spandex; polyester lining. Machine wash. Imported. In Lemon Lime.

Misses 4-18 38½" long
#42662 \$59.99

Shoes
pg. 13



B

Ruched Waist
Printed Dress
~~\$49.99~~
now ONLY
\$39.99

**B. New! Ruched Waist
Scroll Printed Knit Dress**

We've combined a wrinkle-free knit and a slimming A-line silhouette with faux wrap styling for a beautiful look. Lined bodice. Pullover. Polyester/spandex; polyester lining. Machine wash. Imported. In Black White Scroll.

Misses 4-18 40" long
#42615 \$49.99
NOW \$39.99

**C. New Print! Linen
Sheath Dress**

Our signature linen blend fabric in a classic style. Scoop neckline, short sleeves and princess seams for shape; back zip. Linen/rayon. Polyester lining. Machine wash. Imported. In 5 colors.

Misses 4-18 41½" long
Petite 2P-16P 39½" long
Tall 6T-18T 43½" long
#80117 \$39.99



C
Also in
Petite
& Tall
D

Dark Navy

Pale Yellow
Floral

Tulip

Black
White
Dot

Fully-Lined
Linen Sheath
in Misses,
Petite & Tall
\$39.99

★
"Elegant and high quality,
admirable shape,
very nice colors."

Customer from North Carolina

D

D. Back Zip T-Strap Pumps
Ankle strap is adjustable for fit. Back zipper offers easy on and off. Padded sock for added comfort. 2½" covered heel. Manmade upper. Imported. In Dark Navy, White, Banana Cream and Tulip.
Medium 6-10 whole/half sizes #89809 \$49.99

BUY 2
or more and
SAVE \$6
\$36.99 each

DIANE *slims & shapes*

Best-selling pants with SHAPE
BENEFITS® tummy control!

A-B. Diane Tummy-Control Pants by Shape Benefits®

CLASSIC RISE. Straight fit through the hips and a tummy-control panel. One-button closure, belt loops and slant pockets. Rise sits at the natural waist. Polyester/rayon/spandex; nylon/spandex panel. Machine wash. Imported. In 6 colors. Black White is fully lined in polyester.

A. Straight Leg Pants

15" leg opening.
Misses 4-20 31" inseam
Petite 2P-16P 29" inseam
Tall 4T-18T 34" inseam
#40377 \$39.99
Save \$6 / 2 for \$36.99 each

B. Bootcut Pants

20" leg opening.
Misses 4-20 32" inseam
Petite 2P-16P 30" inseam
Tall 4T-18T 35" inseam
#93402 \$39.99
Save \$6 / 2 for \$36.99 each



Tummy-control panel
trims your figure.

Colors for
A,B

Dark Navy
Pinstripe

Black

Black White

Dark Navy

Oxford Tan

Misty Jade
Plaid

STRAIGHT LEG

B
Also in
Petite
& Tall
F

BOOTCUT

A
Also in
Petite
& Tall
F

Relaxed Fit
Cardigan
~~\$39.99~~
now ONLY
\$34.99

C

C. V-Neck Cardigan Sweater

Fine gauge cardigan with a re-
laxed fit, V-neckline, ribbed cuffs
and hem. Stylish high-low hem
and side slits. 100% cotton. Hand
wash. Imported. In 3 colors.
Misses S-XL 25" long
#48145 \$39.99 NOW \$34.99

D. Pretty Pintuck Tunic

Crafted of silky, smooth poly-
ester. Pullover style features
a front button keyhole, a
shirttail hem, long, button-
tab sleeves and a back yoke.
Machine wash. Imported.
Misses S-XL 28" long
#47904 In 3 solid colors. \$34.99
#48231 In Floral Multi. \$39.99

E. Stretch Lace Short Sleeve Top

Lace overlay with sheer sleeves;
scalloped hemline. Nylon/rayon/
Lycra® spandex. Fully-lined bod-
ice in polyester tricot knit. Hand
wash. Imported. In 4 colors.
Misses S-XL 25" long
Petite PS-PXL 23½" long
Plus 1X,2X 27" long
#40758 (M, P) \$34.99
(Plus) \$39.99
Save \$6 / 2 for \$31.99 each
(\$36.99 each for Plus)

Guava

Heather
Grey

Blue
Green

E
Also in
Petite
& Plus

BUY 2,
SAVE \$6
from
\$31.99
each

F. Pointy Toe Slingback Pumps by Boston Design Studio™

This versatile pump has an adjustable buckle
and elastic on the back that allows you to slip
them on and off with ease – no need to undo
the buckle. 3" heel. Manmade patent upper.
Imported. In Sandshell, Black and Navy.
Medium 6-10 whole/half sizes
#88772 \$39.99 NOW \$34.99

F

Guava

Navy

Ivory

Black

There's always more at CHADWICKS.COM 43

Desk to Dinner Dresses from \$49⁹⁹

Wherever you're headed, go there in style with one of these charming dress styles.



A. New! Floral Drape Neck Dress
The softly draped neckline of this lightweight knit dress provides a feminine touch. Gathered pleats at side offer a beautiful shape. Sleeveless dress features empire seams and easy-wear pullover styling. Polyester/spandex. Machine wash. Imported. In Lavender. Misses 6-16 39" long #42730 \$49.99



B. New! Tie Sleeve Relaxed Sheath
Short-sleeve dress has a relaxed-yet-flattering fit, gathered sleeve with keyhole detail and side tie. Carefree, pullover styling. Polyester. Machine wash. Imported. In Royal. Misses 4-16 37" long #42729 \$54.99



C. New! Floral Print Faux Wrap Dress
Lightweight, fluid knit style is gathered at the side and drapes softly for a flattering fit. Sleeveless dress has a bateau neckline and a gorgeous allover print. Pullover styling. Polyester/spandex. Machine wash. Imported. In Turquoise. Misses 6-16 39" long #42728 \$49.99



D. New! Colorblock Surplice Neck Dress
Slimming colorblocking combines with a flattering surplice neckline for a beautiful style. Printed in front; solid black at back and sides. Pullover styling. Polyester/spandex. Machine wash. Imported. In Black. Misses 6-16 39" long #42727 \$49.99



Bolero Shrug available at Chadwicks.com

E. New! Fit And Flare Knit Floral Dress
Discover a sleeveless, scoop-neck style in a feminine floral print you'll love. Lightweight knit dress has a flattering fit-and-flare silhouette and allover seaming detail that offers a beautiful shape. Pullover styling. Polyester/spandex. Machine wash. Imported. In Coral. Misses 6-16 37" long #42726 \$49.99

F. Ankle Strap Sandal by Boston Design Studio™
A slender ankle strap tops off this elegant sandal that goes with just about anything. Buckle closure with elastic gore for easy on/off. 3" heel. Padded footbed for comfort. Manmade. Imported. In Red, White, Gold and Black. Medium 6-10 whole/half sizes #89887 \$39.99



Colors for A-D
Navy Plaid
Navy
Cement
Black
Chino Stripe

Buy 2 or more
& SAVE
\$6 starting at
\$31.99 each

THE Work SHOP

Putting together new career looks has never been easier.

Mix & Match — All pieces are BUY 2 and SAVE \$6.



A-D. Suiting Separates
Mix and match these styles to create your own custom suit. Each piece is available in Misses, Petite, Tall and Plus sizes. Polyester/rayon/spandex; polyester lining. Machine wash. Dry clean blazer. Imported. In 5 colors.

A. Fully-Lined Sheath
Bust darts and seaming for shape. Back zip and vent. Misses 4-18 40" long
Petite 2P-16P 37" long
Tall 6T-18T 43" long
Plus 16W-24W 43½" long
#11022
(M, P, T) **\$39.99** (Plus) **\$44.99**
Save \$6 / 2 for \$36.99 each (\$41.99 each for Plus)

B. Flat-Front Pants
Classic rise bootcut pants sit at the waist. 19" leg opening. Side slash pockets. Fly front. Misses 4-18 32" inseam
Petite 2P-16P 30" inseam
Tall 4T-18T 35" inseam
Plus 16W-24W 31" inseam
#47101
(M, P, T) **\$39.99** (Plus) **\$44.99**
Save \$6 / 2 for \$36.99 each (\$41.99 each for Plus)

C. Fully-Lined Skirt
Contour waist. Side slash pockets. Back zip and vent. Misses 4-18 24" long
Petite 2P-16P 22" long
Tall 4T-18T 26" long
Plus 16W-24W 25" long
#47886
(M, P, T) **\$34.99** (Plus) **\$39.99**
Save \$6 / 2 for \$31.99 each (\$36.99 each for Plus)

D. Fully-Lined Blazer
Front besom pockets. Two-button closure. Misses 4-18 25" long
Petite 2P-16P 23½" long
Tall 4T-18T 26½" long
Plus 16W-24W 26" long
#11351
(M, P, T) **\$49.99** (Plus) **\$54.99**
Save \$6 / 2 for \$46.99 each (\$51.99 each for Plus)

E. Stretch Lace Short Sleeve Top
Lace overlay with sheer sleeves; scalloped hemline. Nylon/rayon/Lycra® spandex. Fully-lined bodice in polyester tricot knit. Hand wash. Imported. In 4 colors. Misses S-XL 25" long
Petite PS-PXL 23½" long
Plus 1X,2X 27" long
#40758 (M, P) **\$34.99** (Plus) **\$39.99**
Save \$6 / 2 for \$31.99 each (\$36.99 each for Plus)

Our Comfort Waist

Made of a breakthrough fabric that

Bi-Stretch Pants.

moves with you & retains its shape.

A. New! Windowpane High-Low Hem Tunic
Striking windowpane pattern on our best-selling tunic body has a split V-neckline and a high-low hem. Rayon challis. Machine wash. Imported. In Black White. Misses S-XL 35½" long #48270 \$39.99

B-C. Signature Bi-Stretch Pant
With the flawless fit of this easy-wear pull-on pant, you get a sleek silhouette every time. Our two-way stretch fabric moves with you and retains its shape all day long. Comfort waist and back darts for shape complete the look. Rayon/nylon/spandex. Machine wash. Imported. In 4 colors.

B. Bootcut
17" leg opening.
Misses 4-18 32" inseam
#48191 \$39.99

C. Straight Leg
14" leg opening.
Misses 4-18 31" inseam
#48190 \$39.99

D. Chain Detail Sandal by Boston Design Studio™
This H-band sandal has an adjustable strap for flexibility and comfort and a chain detail for a touch of style. Elastic inset on the adjustable buckle for easy on and off. Manmade. 3" heel. Imported. In Bone, Black and Mink.
Medium 6-10 whole/half sizes
#89811 \$49.99 **NOW \$44.99**



Comfort waist with stretch provides a flawless fit

Crafted of easy-wear stretch fabric

Moves with you and retains its shape all day

BOOTCUT

STRAIGHT LEG

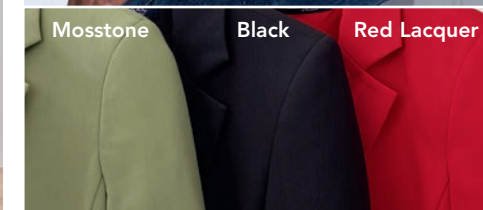
Versatile Long Length Boyfriend Blazer
\$49.99

E
Also in Tall



Top
pg. 68

Jeans
pg. 15



E. Long Length Boyfriend Blazer

A slightly relaxed fit and long length give it that easy "boyfriend" style. Princess seams add the perfect amount of shape. Wear the sleeves up or down for a variety of styling options. One button closure. Double welt pockets. Polyester/rayon/spandex. Fully lined in polyester. Dry clean. Imported. In 3 colors. Misses 4-18 29" long Tall 4T-18T 30½" long #42286 \$49.99



Blouse
pg. 74

A
B
D

A. Fit & Flare Seamed Knit Dress
Seam details and a flowing silhouette give you a truly gorgeous shape. Elbow sleeves; pullover style. Polyester/spandex. Machine wash. USA. In 2 colors.
Misses S-XL 40" long
Tall ST-XLT 42" long
#42540 \$49.99



A
Also in
Tall

Tea Rose

Dark Navy

● Slimming seaming details

● Forgiving silhouette



B. Ruched Waist Floral Printed Knit Dress
A-line silhouette with faux wrap styling and a lined bodice. Pullover styling. Polyester/spandex. Polyester lining. Machine wash. Imported. In New French Blue Floral.
Misses 4-18 40" long
#42616 \$49.99 **NOW \$39.99**

C. New! Lime Floral Print Smocked Bodice Dress
Pretty floral print blooms over this long-sleeve, sweetheart neckline dress with pearl stitching and a pretty ruffle trim that accents the hemline and elasticized cuffs. Pullover styling. Polyester; polyester lining. Machine wash. Imported. In Lime Multi.
Misses S-XL 38" long
#42661 \$59.99

Ruched
Waist Dress
~~\$49.99~~
now ONLY
\$39.99



D. Strappy Sandals by Boston Design Studio™
This pretty sandal features an adjustable ankle strap with an elastic inset behind the buckle for comfort. 3" covered heel. Padded sock. Manmade patent upper. Imported. In Black, Navy, Nude, White, Sea Mist and Tea Rose.
Medium 6-10 whole/half sizes
#82112 \$29.99
Save \$10 / 2 for \$24.99 each



BUY 2,
SAVE \$10
\$24.99
each



E. New! Short Sleeve Floral Print Dress
The flattering silhouette you love now in a captivating new print. Features a scoop neckline and a full, sweeping skirt. Wear with or without the fabric belt with chain detail. Pullover styling. Polyester/spandex. Machine wash. Imported. In Lapis Multi.
Misses S-XL 48" long
#42660 \$59.99



F. New! Royal Blue Floral Print Corkscrew Dress
Our love affair with floral prints continues this season in this sleeveless scoopneck dress with a corkscrew body. Feminine, flattering dress features a removable self-belt and pullover styling. Polyester; polyester lining. Machine wash. Imported. In Royal Blue Floral.
Misses 4-18 41½" long
#42597 \$59.99

Corkscrew
Dress only
\$59.99

BLUEPRINT
for summer style
NEW dresses in beautiful blue hues from only \$39.99!

Summer occasion dresses from \$49⁹⁹

These feminine, flirty styles are perfect for every event on your summer calendar

A. New! Hanky Hemline Chiffon Floral Dress

Soft gathering at the scoop neckline adds a feminine touch to this pullover style dress. Elastic, blouson waist, removable self-tie belt, side slits and a bright floral watercolor print complete the look. Polyester; polyester lining. Machine wash. Imported. In Pink White. Misses 6-16 54" at longest point #42674 \$59.99



A
F



B
F

B. New! Shantung Illusion Neckline Dress

Gorgeous floral print sleeveless dress features a fit and flare silhouette with front and back seaming for a beautiful shape. Sheer illusion neckline and a full skirt. Hidden zip and back keyhole closure. Polyester; polyester lining. Machine wash. Imported. In Blue Floral. Misses 6-16 42" long #42666 \$59.99



C

Shoes
pg. 45

C. New! Georgette Drape Neck Dress
Add a touch of romance to your look, starting with graceful florals. This sleeveless style features a flattering drop waist with a flowing skirt bottom. Polyester; polyester lining. Machine wash. Imported. In Pink Yellow Multi. Misses 6-16 47½" long #42668 \$59.99



D
F



F

BUY 2,
SAVE \$10
\$24⁹⁹
each

D. New! Orange Blossom Printed Sheath

A brilliant floral print adorns this attractive sleeveless dress. Features a flattering scoop neckline and bust and back darts for superior shaping. Back zip. Polyester/spandex; polyester lining. Dry clean. Imported. In Orange Multi. Misses 6-16 36½" long #42659 \$49.99

E. New! Watercolor Floral Georgette Dress

Sleeveless dress style features a flattering surplice neckline, asymmetrical drop waist and a full skirt with handkerchief hem. Pullover styling. Polyester. Lined. Hand wash. Imported. In Multi. Misses 4-18 51½" long #42657 \$59.99

F. Strappy Sandals by Boston Design Studio™

This pretty sandal features an adjustable ankle strap with an elastic inset behind the buckle for comfort. 3" covered heel. Padded sock. Manmade patent upper. Imported. In Black, Navy, Nude, White, Sea Mist and Tea Rose. Medium 6-10 whole/half sizes #82112 \$29.99

Save \$10 / 2 for \$24.99 each



E
F

Georgette
Dress only
\$59⁹⁹



Lilac Mist

White

A
B

Corkscrew Skirt only
\$39⁹⁹

Shoes
pg. 45



Split Back Blouse
~~\$29⁹⁹~~
now ONLY
\$24⁹⁹

C



Lavender

Tea Rose



Lace Trim Cardigan
~~\$49⁹⁹~~
now ONLY
\$44⁹⁹

D

A. Elbow Sleeve Scoopneck Top

Lusciously soft, easy-to-wear top features a seamless scoop neckline and elbow-length sleeves that take you through this season and beyond. Double layered in front for superior coverage. Rayon/spandex. Machine wash. Imported. In 2 colors; white also shown on page 35.

Misses S-XL 25" long
#48262 \$29.99

B. Corkscrew Skirt

Look beautiful in an instant with this light and airy skirt featuring lovely corkscrew ruffles. Super-soft skirt hits below the knee and features a comfortable elastic waist. Pull-on styling; fully lined. Polyester. Machine wash. Imported. In Purple Multi.

Misses S-XL 26" long
#48216 \$39.99

C. Layered Look Split Back Blouse

A gorgeous layering piece that offers up a stylish layered look! Tank style features an open back with contrasting color fabric, keyhole button closure and bust darts for a beautiful shape. Polyester. Machine wash. Imported. In 2 colors.

Misses S-XL 27" long
#48131 \$29.99 **NOW \$24.99**

D. Lace Trim Cardigan

Fine gauge sweater knit cardigan with 3/4-length sleeves and intricate lace details will soon be your favorite layering piece – day and night. Ribbed at banded hem and sleeves. Cotton/viscose/nylon. Machine wash. Imported. In Pink Champagne.

Misses S-XL 24½" long
#48143 \$49.99 **NOW \$44.99**

E. Crepe Tunic Vest

Notch lapels and front pockets lend to the tailored appeal of this tunic-length vest. Pairs beautifully with our Crepe No-Waist Pant. Single-button closure and princess seams for shape. Polyester/spandex. Polyester lining. Dry clean. Imported. In 2 colors.

Misses 4-18 30½" long
#48234 \$49.99 **NOW \$39.99**

Purple Mist

Pink Champagne

F. Crepe No-Waist Pant

The classic fit of our no-waistband pants has been upgraded in a soft, smooth crepe fabric. Slim leg styling, zip-and-hook closure and besom back pockets complete the look. 14½" leg opening. Polyester/spandex. Machine wash. Imported. In 2 colors.

Misses 4-18 31" inseam
#48209 \$39.99 **NOW \$34.99**

Purple Mist

Pink Champagne



E
F

Cami
pg. 74

VEST DRESSED

You'll love this versatile new tunic vest – go sleeveless or pair with a tee!

Crepe Tunic Vest
~~\$49⁹⁹~~
now ONLY
\$39⁹⁹



A
E
F



A
C

A. New! Scarf Print Tunic

Captivating allover print in the tunic length you love. Easy-wear, pullover blouse has a V-neckline, side slits for room to move and long sleeves. Polyester. Hand wash. Imported. In Gold Multi.
Misses S-XL 29" long **#48380 \$39.99**

B. Open Weave Pointelle Sweater

Lightweight textured sweater with 3/4 sleeves, a flattering V-neckline and a slight shark bite hem. Open stitch detail at hem; center front and back seam detail. Layer with your favorite cami. Polyester/acrylic. Machine wash. Imported. In 3 colors.
Misses S-XL 26" long **#48215 \$44.99 NOW \$39.99**

C. Straight Leg Side-Zip Pants

The secret to comfort is in our smooth elastic waistband. Pants sit at the waist and have back darts for shaping. 15" leg opening. Polyester/rayon/spandex. Machine wash. Imported. In 5 colors.
Misses 4-18 31" inseam **Tall 6T-18T 34" inseam**
#48034 \$39.99 Save \$6 / 2 for \$36.99 each



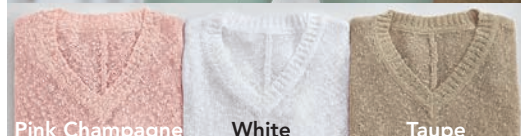
THE SIDE-ZIP PANT
The smooth, flattering elastic waistband makes this pant a true customer favorite!



B

Pointelle
Sweater
~~\$44.99~~
now **ONLY \$39.99**

Shown
with cami
sold on
pg. 74



Pink Champagne White Taupe

D. Lace Trim Knit Top

Versatile scoopneck knit top features 3/4-length sleeves and an intricate lace overlay detail. Wear this ultra-soft top with your favorite jeans or skirt. Rayon/spandex body; rayon lace accents. Hand wash. Imported. In Slate Green.
Misses S-XL 24½" long
#48241 \$39.99



E. Floral Maxi Skirt

Spring is in full bloom in this flowing skirt with romantic floral print. Features an elastic waist for easy, pull-on styling and a chain-stitched hem. Fully lined. Polyester. Hand wash. Imported. In Floral Multi.
Misses S-XL 38" long **#48238 \$39.99**



D
E

Shoes
pg. 45

F. Textured Sweater Vest

Pullover style sleeveless sweater looks great by itself or layered over your favorite shirt. Ribbing at neck and banded bottom. 100% cotton. Machine wash. Imported. In 2 colors.
Misses S-XL 23½" long
#48127 \$49.99

G. Pleat Front Culottes

Crop wide leg culottes feature a clean waistband, stitch-down pleats, side zipper and back waist darts for shape. 25½" leg opening. Polyester/rayon/spandex. Machine wash. Imported. In 3 colors.
Misses 4-18 25" inseam
#48242 \$39.99



F
G

Shoes
pg. 48



F

Green Quartz

Butter



G

Oxford Tan

Butter

Green Quartz



A. Zip Front Wedge Sandals by Aerosoles®

Get the style you want and the comfort you crave in these strappy sandals. Slingback straps with elastic inserts. Comfort foam footbed. Diamond flex rubber sole. 2½" wedge heel. Manmade. Imported. In Black, Tan, White and Grey. **Medium** 6-10 whole/half sizes **#88767 \$59.99**



B. Slide Sandal by Dr. Scholl's®

Step out on the town in these pretty sandals with faux leather upper with hook-and-loop closure and a square buckle detail. Shoes feature side nail head details, traction outsole, and 1½" heel. Manmade. Imported. In Beige Stripe, Saddle Chopout and Black Chopout. **Medium** 6-10 whole sizes **#89891 \$54.99**

C. Triangle Vamp Sandal by Boston Design Studio™

So great you'll want them in every color. Elastic at buckle for easy on/off, metallic grommet detail, ¾" stacked wedge bottom. Manmade. Imported. In Honey Wheat, Caspian and Ash Rose. **Medium** 6-10 whole/half sizes **#89814 \$34.99**



D. Crossband Stacked Heel Sandal by Boston Design Studio™

Elastic straps and back zipper for easy on and off. Padded sock for comfort. Manmade. 2" stacked block heel. Imported. In White, Black and Chino. **Medium** 6-10 whole/half sizes **#89805 \$39.99**



E. Triple T-Strap Wedge by Boston Design Studio™

Caged triple T-strap offers a secure fit with adjustable buckle and elastic for easy on and off. Padded sock. Manmade. 2½" stacked wedge bottom. Imported. In French Blue, Black and Cognac. **Medium** 6-10 whole/half sizes **#89808 \$39.99**



F. Braided Thong Wedge Sandal by Boston Design Studio™

Pretty metallic braid detail, slingback styling with adjustable buckle and elastic so you can easily slip them on and off. 1½" heel. Manmade. Imported. In Tan, Bright Navy and White. **Medium** 6-10 whole/half sizes **#89892 \$34.99**



G. T-Strap Espadrille Sandals

Adjustable buckle; cushioned insole. 2½" woven jute wedge bottom. Manmade. Imported. In Navy, Khaki and Black. **Medium** 6-10 whole/half sizes **#88820 \$44.99**



H. Open Toe Slingback Pump by Boston Design Studio™

The full coverage of this slingback, open toe pump keeps you confident and stylish whether you wear it with pants or skirts. Inside zipper for easy on/off. Manmade upper. 3½" covered heel. Imported. In Nude and Black. **Medium** 6-10 whole/half sizes **#89804 \$49.99** **NOW \$44.99**



BUY *any* TWO and SAVE \$10

Mix and match any styles (J-N).

J. Wedge Thong Sandal by Boston Design Studio™

Sandal with a flexible bottom and two-piece stitched sock for comfort and exceptional quality. 1½" stacked wedge. Manmade. Imported. In Black Patent, Silver, White, Bright Lime, Dark Navy, Chino, Gold and Morning Glory. **Medium** 6-10 whole/half sizes **Wide** 7-10, 11 whole/half sizes **#89803 \$29.99** **Save \$10 / 2 for \$24.99 each**



Also in Wide



M. Perforated Ballet Flats by Boston Design Studio™

These flats pair perfectly with everything from jeans to dresses. Perforated upper, easy slip-on style, comfortable padded sock and a flexible bottom. Manmade. Imported. In Lime Green, Bright Navy, Coral, White and Oxford Tan. **Medium** 6-10 whole/half sizes **Wide** 7-10, 11 whole/half sizes **#88812 \$29.99** **Save \$10 / 2 for \$24.99 each**



Also in Wide

K. Strappy Sandals by Boston Design Studio™

Adjustable ankle strap with an elastic inset behind the buckle for comfort. 3" covered heel. Padded sock. Manmade patent upper. Imported. In Black, Navy, Nude, White, Sea Mist and Tea Rose. **Medium** 6-10 whole/half sizes **#82112 \$29.99** **Save \$10 / 2 for \$24.99 each**



Also in Wide

L. Back Zipper Wedge Sandals by Boston Design Studio™

2½" covered wedge. Padded sock for comfort. Manmade. Imported. In Black, White, Navy, Animal and Coffee. **Medium** 6-10 whole/half sizes **Wide** 7-10, 11 whole/half sizes **#88775 \$39.99** **Save \$10 / 2 for \$34.99 each**

N. Sleek Pump by Boston Design Studio™

Pretty pointed toe pump offers a sleek look with pants, dresses and more. Shoes feature a padded sock and 2½" covered heel. Manmade. Imported. In Smoke, Sandshell and Black. **Medium** 6-10 whole/half sizes **#89806 \$39.99** **Save \$10 / 2 for \$34.99 each**



A
B



Aster

Brook Green

White



A



White

Brook Green

Aster

A
B
C
E



Purple
Multi

Flare Printed
Skirt only
\$39⁹⁹

A
C
E



Palm
Print
Multi

Your Go-Everywhere Skirt
One flowy skirt. Three charming prints. Endless styling options.
Which one will you wear today?

A. Perfect Tank

Crafted of ultra-soft cotton with a hint of stretch and featuring wide, bra-friendly straps, this is the must-have tank for every woman's wardrobe. Cotton/spandex. Machine wash. Imported. In 6 colors; more colors shown on page 70.
Misses S-XL 22" long
#48156 \$16.99

B. New! Lettuce Edge Open Front Cardigan

Soft, airy 3/4-sleeve cardigan has delicate lettuce edge trim on cuffs and hem for the perfect touch of femininity. Looks beautiful paired with our flare print skirts. Acrylic/nylon. Hand wash. Imported. In 3 colors.
Misses S-XL 22" long
#48274 \$39.99

C. New Prints! Flare Printed Skirt

Lightweight skirt with a comfortable elastic waist and godet inserts for feminine flare. Polyester. Fully lined. Machine wash. Imported. In 3 colors.
Misses S-XL 28" long
#48200 \$39.99

D. Versatile Jean Jacket

The perfect length to layer! In stretch denim and twill with great seaming detail, flap chest pockets and classic shank buttons. Cotton/spandex. Machine wash. Imported. In 4 colors.
Misses S-XL 22½" long
Petite PS-PXL 21" long
Tall ST-XLT 24" long
#40916 \$39.99

E. Cross Band Sandal by Boston Design Studio™

Stunning cross band sandal features a hook-and-loop closure on back and metallic ornament detail. Patent upper and padded sock. 3" stacked heel. Manmade. Imported. In Nude, Salmon Buff, Brook Green and Pearl Blush.
Medium 6-10 whole/half sizes
#89807 \$44.99



A
C
D
Also in
Petite
& Tall
E



D

Indigo
Denim

Aster

Brook
Green

White



E

Floral
Multi

A,B
Also in
Petite

ENDLESS OPTIONS

*Wear this cardigan
& shell together
or layer separately
with our
poplin shirts.*

A
Also in
Petite
E
Also in
Petite
& Plus

THE *Perfect* SHIRT

Three gorgeous styles - each one in
your choice of 8 amazing color options.

BUY 2,
SAVE \$6
*Misses, petite
& plus sizes!*
from
\$23⁹⁹ each

C
*Long
Sleeve*

D
*3/4
Sleeve*

E
Sleeveless

B

Blue Trellis

Wild Lime Multi

Blue Bell

White

Tropical Peach Multi

Floral Multi

Red Check

Black/White

Colors
for A,B

Black

White

Spanish Moss

Coral

Midnight

Caribbean

62 CHADWICKS.COM

A. Classic Cardigan Sweater

The styling of this cardigan makes it your wear-everywhere choice. With long sleeves, a button front, and ribbing at the hem, this piece pairs beautifully with our sweater shell. Cotton/viscose. Machine wash. Imported. In 6 colors.
Misses S-XL 24½" long
Petite PS-PXL 23" long
#48202 \$34.99

B. Sweater Shell

The ultimate layering essential. This sleeveless fine gauge sweater is bra-friendly and perfect on its own, paired with a cardigan or layered over our favorite poplin shirts. Cotton/viscose. Machine wash. Imported. In 6 colors.
Misses S-XL 23" long
Petite PS-PXL 21½" long
#48203 \$19.99

C-E. Stretch Poplin Shirts

Best-selling styles with a bit of stretch for a great fit. Button front with bust darts and waist seams for shaping. Cotton/spandex. Machine wash. Imported. In 8 colors.

C. Long Sleeve

Misses 4-18 27½" long
Petite 2P-16P 26" long
Plus 18W-24W 29½" long
#14500 (M, P) \$29.99 (Plus) \$34.99
Save \$6 / 2 for \$26.99 each (\$31.99 each for Plus)

D. 3/4-Sleeve

Misses 4-18 27½" long
Petite 2P-16P 26" long
Plus 18W-24W 29½" long
#04707 (M, P) \$29.99 (Plus) \$34.99
Save \$6 / 2 for \$26.99 each (\$31.99 each for Plus)

E. Sleeveless

Misses 4-18 27½" long
Petite 2P-16P 26" long
Plus 18W-24W 29½" long
#47047 (M, P) \$26.99 (Plus) \$29.99
Save \$6 / 2 for \$23.99 each (\$26.99 each for Plus)

A. Printed Twill Sheath Dress

The classic sheath you know and love, now in a beautiful new print. Comfortable twill dress with princess seams for shape. Hidden back zip; back vent. Cotton/spandex. Machine wash. Imported. In Bright Lime Floral. Misses 4-18 39" long Petite 2P-16P 36" long #42507 ~~\$44.99~~ **NOW \$39.99**

Printed Twill Sheath Dress
~~\$44.99~~
now ONLY
\$39.99

A
Also in
Petite

B. Denim Sheath Dress

The classic sheath goes casual in comfortable stretch denim with seaming for shape. Back zip. Cotton/spandex. Machine wash. Imported. In Denim. Misses 4-18 39" long #40996 **\$39.99**

C. New! Embroidered Peasant Blouse

Rich in details, this peasant blouse has it all. Embroidered accents adorn the front, sleeves and neckline, 3/4-length sleeves feature elasticized cuffs and the drawstring scoop neckline has a tie-front tassel closure. Rayon. Hand wash. Imported. In Sea. Misses S-XL 27" long #48379 **\$39.99**

D. Embroidered Hem Knit Top

Pretty elbow-sleeve top features slight shirring around the split neckline and a scalloped hem finished with rows of embroidered detail. Cotton/spandex. Machine wash. Imported. In 3 colors. Misses S-XL 25" long #48174 ~~\$29.99~~ **NOW \$24.99**



Shoes
pg. 59



C
F

Shown
with cami
sold on
pg. 74



D
F

Embroidered
Hem Top
~~\$29.99~~
now ONLY
\$24.99



E. Perforated Ballet Flats by Boston Design Studio™

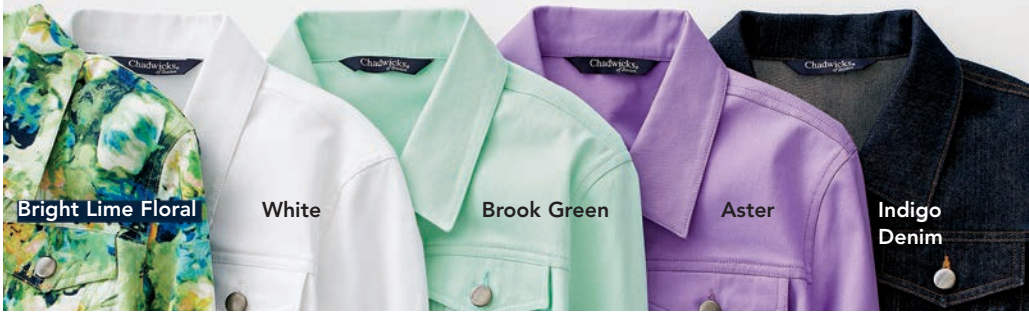
Perforated upper, easy slip-on style, comfortable padded sock and a flexible bottom. Manmade. Imported. In Lime Green, Bright Navy, Coral, White and Oxford Tan. Medium 6-10 whole/half sizes Wide 7-10, 11 whole/half sizes #88812 **\$29.99**
Save \$10 / 2 for \$24.99 each

F. Colored Straight Leg Jean

FAVORITE RISE. Five-pocket styling in twill with a hint of stretch for ease. Button and zip fly; belt loops. Rise sits just below the natural waist. 16" leg opening. Cotton/spandex. Machine wash. Imported. Misses 4-18 32" inseam Tall 4T-18T 35" inseam #48132 In 3 solid colors. **\$39.99**
NOW \$34.99
#48224 In Bright Lime Floral. **\$44.99**



E
Also in
Wide
F
Also in
Tall



G. Versatile Jean Jacket

The perfect length to layer! In stretch denim and twill with great seaming detail, flap chest pockets and classic shank buttons. Cotton/spandex. Machine wash. Imported. Misses S-XL 22½" long Petite PS-PXL 21" long Tall ST-XLT 24" long #40916 In 4 solid colors. **\$39.99**
#48179 In Bright Lime Floral. **\$44.99**

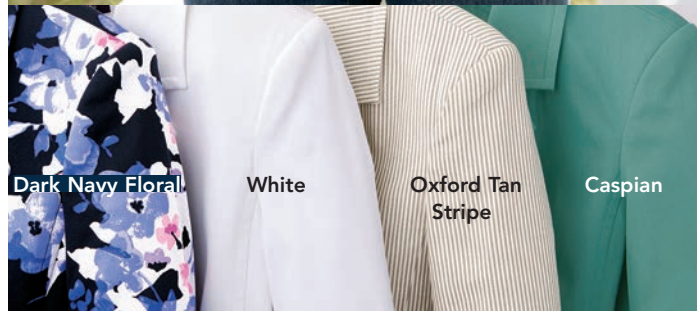


Versatile Jean
Jacket from
\$39.99



A
Also in
Tall

Fully-Lined
Twill Blazer only
\$39⁹⁹



A. Fully-Lined Stretch Twill Blazer

Flattering length, a touch of stretch and a narrower lapel for a more updated look. Notch collar, pockets and button details on the sleeves. Back vent. Cotton/spandex. Polyester lining. Machine wash. Imported. In 4 colors.

Misses 4-18 24½" long

Tall 6T-18T 26" long

#48220 Solids: \$39.99

Patterns: \$44.99 NOW \$39.99

B. Elbow Sleeve French Cuff Poplin Shirt

Your favorite poplin in a beautiful new silhouette. Covered button front placket, elbow sleeves with French cuffs, princess seams and bust darts for shape and a slight shirttail hem. Cotton/spandex. Machine wash. Imported. In 2 colors.

Misses 4-18 27" long

#48148 \$29.99



White

Almond Cream

B
C

Twill Skirt
only
\$29⁹⁹

Shoes
pg. 58

C. Twill Skirt

Wardrobe essential with a flattering contour waist, darts for shape and a slight A-line silhouette. Side pockets. Back zip; back walking vent. Cotton/spandex. Machine wash. Imported. In 3 colors.

Misses 4-18 22" long

#48009 \$29.99



Bright Lime

White

Navy

D
E
F

D. Linen Blend Cardigan

Ultra soft with rounded neckline, relaxed fit, 3/4 sleeves and a full button front. Linen/cotton. Hand wash. Imported. In 3 colors.

Misses S-XL 23½" long **#48126 \$39.99**

E. Bermuda Shorts

CLASSIC RISE. Contour waist with belt loops. Rise sits at the natural waist. Side slash pockets. 20½" leg opening. Cotton/spandex twill. Machine wash. Imported. In 6 colors.

Misses 4-18 12" inseam

Petite 2P-16P 11" inseam

Plus 16W-24W 11½" inseam

#47832

Solids: (M, P) \$24.99 (Plus) \$27.99

Prints: (M, P) \$29.99 (Plus) \$32.99

F. Wedge Thong Sandal by Boston Design Studio™

Manmade. Imported. In Black Patent, Silver, Gold, White, Chino, Morning Glory, Dark Navy and Bright Lime.

Medium 6-10 whole/half sizes

Wide 7-10, 11 whole/half sizes

#89803 \$29.99 Save \$10 / 2 for \$24.99 each



Bermuda
Shorts from
\$24⁹⁹

E
Also in
Petite &
Plus
F
Also in
Wide



BUY 2,
SAVE \$10
\$24⁹⁹
each



CHADWICKS.COM 67

Essential TEES

Our luxuriously soft tees come in four versatile styles – in Misses, Petite and Plus sizes.

Buy 2 or more
& SAVE
\$6 starting at
\$15.99 each

Nectarine

Leaf Print

Bright Lime

Morning
Glory

Dark Navy

Honey Wheat

Coffee

Lilac Mist

Ivory

White

Black



Scoopneck

A



Sleeveless

B



Ballet Neck

C



Boatneck

D

A-D. New Colors! Essential Knit Tees
Cotton/spandex. Machine wash. Imported. In 11 colors.

A. 3/4 Sleeve Scoopneck Tee
Misses S-XL 25" long
Petite PS-PXL 23½" long
Plus 1X,2X 27" long
#66590
(M, P) \$21.99 (Plus) \$24.99
Save \$6 / 2 for \$18.99 each
(\$21.99 each for Plus)

B. Sleeveless Tee
Misses S-XL 25" long
Petite PS-PXL 23½" long
Plus 1X,2X 27" long
#48160
(M, P) \$18.99 (Plus) \$21.99
Save \$6 / 2 for \$15.99 each
(\$18.99 each for Plus)

C. Elbow Sleeve Ballet Neck Tee
Misses S-XL 25" long
Petite PS-PXL 23½" long
Plus 1X,2X 27" long
#21183
(M, P) \$21.99 (Plus) \$24.99
Save \$6 / 2 for \$18.99 each
(\$21.99 each for Plus)

D. 3/4 Sleeve Boatneck Tee
Misses S-XL 25" long
Petite PS-PXL 23½" long
Plus 1X,2X 27" long
#40449
(M, P) \$21.99 (Plus) \$24.99
Save \$6 / 2 for \$18.99 each
(\$21.99 each for Plus)



Smoke Grey

Midnight

Butter

Chino

E

H

F

H

G

H

Pure COMFORT ahh-mazing from \$29.99

E-G. Drawstring Linen Comfort Waist Bottoms

Our newest comfort waistband is so unique! It's made of knit cotton rib with smooth elastic and an adjustable drawstring that provides the ultimate in comfort and a flattering, clean look. Three lightweight, pull-on styles offer a relaxed fit. Linen/rayon. Machine wash. Imported. In 4 colors.

E. Crop Pant

16" leg opening.
Front & back pockets.
Misses S-XL
25" inseam
#48098 \$39.99

F. Shorts

20" leg opening.
Front & back pockets.
Misses S-XL
12" inseam
#48101 \$29.99

G. Skirt

Two front pockets.
Misses S-XL
22" long
#48099 \$34.99

H. Braided Comfort Step Sandal by Bamboo®

You'll feel like you're walking on clouds with this classic thong sandal featuring an ultra-soft padded footbed. Braided upper. 1/2" heel. Manmade. Imported.

In Beige and Black.
Medium 5½-9, 10
whole/half sizes
#89894 \$24.99



BAMBOO

There's always more at CHADWICKS.COM 69

THE Linen Shop

We adore our new linen collection!
Wear-now styles in beautiful colors.

Short Linen Dress
~~\$39.99~~
now ONLY
\$34.99

A



Blue Mist Multi

Tropical Peach Multi

Shoes
pg. 72

Textured V-Neck Sweater
~~\$49.99~~
now ONLY
\$39.99

B
C



Pants
pg. 73

C



Coral

Wild Lime

White

Oxford Tan

B



Dyed to match our ultra-soft perfect tank.

A. Short Linen Dress

Enjoy the cool feel and crisp look of this dress. This go-to features a classic A-line silhouette, on-seam pockets and pullover styling. Linen/rayon. Machine wash. Imported. In 2 colors. Misses S-XL 39" long
#42563 \$39.99 **NOW \$34.99**

B. Textured V-Neck Pullover Sweater

Soft, relaxed sweater has a beautiful open-stitch design, high-low hem, 3/4 sleeves, ribbing at cuffs and side slits. Pairs perfectly with our dyed-to-match tank for coverage. Cotton/nylon. Machine wash. Imported. In 4 colors. Misses S-XL 26½" long
#48154 \$49.99 **NOW \$39.99**

C. Perfect Tank

Crafted of ultra-soft cotton with a hint of stretch and featuring wide, bra-friendly straps, this is the must-have tank for every woman's wardrobe. Cotton/spandex. Machine wash. Imported. In 6 colors; more colors shown on page 60. Misses S-XL 24" long
#48156 \$16.99

D. New! Palm Print Blouse

Escape to the tropics in this breezy and beautiful sheer blouse. Features a split-V neckline with elastic drawstring closure and a handkerchief hemline. Layer it with your favorite cami. Polyester. Machine wash. Imported. In Yellow Multi. Misses S-XL 27¼" long
#48268 \$39.99

D



Cami
pg. 74

Pants
pg. 48

Tropical Peach Multi

Spanish Moss

Coffee

Blue Mist Multi

Linen Shirt Jacket
~~\$39.99~~
now ONLY
\$34.99

linen shop

E
Also in Tall
F
Also in Petite & Plus



Pants
pg. 73

E. Linen Shirt Jacket

Our favorite shirt jacket has seam detail that creates the perfect shape and fit. Flap pockets at chest, long sleeves with button and cuff. Linen/rayon. Machine wash. Imported. In 4 colors. Misses 4-18 24" long
Tall 4T-18T 25½" long
#41196 \$39.99 **NOW \$34.99**

F. 3/4 Sleeve Scoopneck Tee

Cotton/spandex. Machine wash. Imported. In 11 colors; more colors on page 68. Misses S-XL 25" long
Petite PS-PXL 23½" long
Plus 1X,2X 27" long
#66590 (M, P) \$21.99 (Plus) \$24.99
Save \$6 / 2 for \$18.99 each
(\$21.99 each for Plus)

A. Embroidered Scalloped Hem Top
Easy fit, 3/4-sleeve knit top features a flattering scoop neckline and scalloped hem with pretty rose embroidery and cut-out details. 100% cotton. Machine wash. Imported. In 4 colors.
Misses S-XL 26" long
#48187 \$29.99

B. Flowy Linen Skirt
Feminine and flirty silhouette with side slit pockets, hidden side zip and a flattering waistline. Linen/rayon. Polyester lining. Machine wash. Imported. In 3 colors.
Misses 4-18 23" long
#48188 \$39.99

C. Stretch Band Espadrille by Boston Design Studio™
Stretch cross band design with 2¾" espadrille wedge. Slip-on style with padded sock and rubber sole. Manmade. Imported. In Coffee, Spiced Coral and Oxford Tan.
Medium 6-10 whole/half sizes
#89810 \$49.99
NOW \$44.99



D. Coconut Button Cardigan
Beautiful pointelle sweater knit with two-tone yarn has lettuce edge detail and oversized coconut buttons for style. Cotton/acrylic/nylon. Hand wash. Imported. In 3 colors.
Misses S-XL 24" long Tall ST-XLT 25½" long
#47623 \$59.99 NOW \$54.99



E. Elbow Sleeve Ballet Neck Tee
Irrisistibly soft knit; flattering neckline. Cotton/spandex. Machine wash. Imported. In 11 colors; more colors and details on page 68.
Misses S-XL 25" long
Petite PS-PXL 23½" long
Plus 1X,2X 27" long
#21183 (M, P) \$21.99 (Plus) \$24.99

F. Drawstring Linen Pant
You'll love the carefree ease of these breezy, wide-leg pants with drawstring waist. Side and back patch pockets. 22" leg opening. Linen/rayon. Machine wash. Imported. In 5 colors.
Misses S-XL 32" inseam
Petite PS-PXL 30" inseam
Tall ST-XLT 35" inseam
Plus 1X,2X 31" inseam
#40362 (M, P, T) \$29.99 (Plus) \$34.99

G. Drawstring Linen Crop Pant
Wide-leg pants in a season-right cropped length. Relaxed fit and drawstring waist. Side and back patch pockets. 17½" leg opening. Linen/rayon. Machine wash. Imported. In 5 colors.
Misses S-XL 25" inseam
Tall ST-XLT 27½" inseam
Plus 1X,2X 24" inseam
#47159 (M, T) \$29.99 (Plus) \$34.99

Linen Pants from \$29.99



linen shop

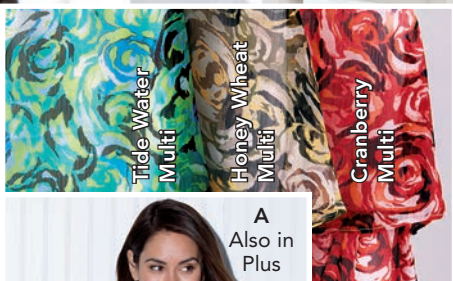
OUR Famous BOYFRIEND CARDIGAN

That one perfect cardi that goes with everything.
Always available in Petite, Tall and Plus sizes.



A
B

Polished
with a pant
pg. 48



A
Also in
Plus



A. Tiered Print Blouse
Sleeveless pullover blouse has three layers of airy georgette tiers and is fully lined. Polyester. Machine wash. Imported. In 3 colors. Misses S-XL 26½" long Plus 1X,2X 28½" long #47120 (M) \$34.99 **NOW \$29.99** (Plus) \$39.99 **NOW \$34.99**

B. The Boyfriend Cardigan
A best-selling sweater in soft 100% fine gauge cotton with a V-neckline and relaxed boyfriend style fit. Machine wash. Imported. In 11 colors. Misses S-XL 28" long Petite PS-PXL 26½" long Tall ST-XLT 29½" long Plus 1X,2X 30½" long #18473 (M, P, T) \$39.99 (Plus) \$44.99 **Save \$10 / 2 for \$34.99 each (\$39.99 each for Plus)**



B

Dressed up
with a skirt
pg. 66

Shoes
pg. 48



B
C

Relaxed
with shorts
pg. 67

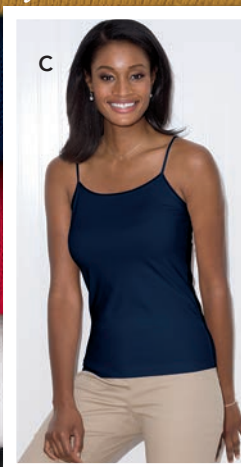
Shoes
pg. 59

C. Delicate Organza Trim Cami
Scoop up this layering essential in every color! Comfortable jersey knit camisole with adjustable straps is finished with organza trim at the neckline. Cotton/spandex. Machine wash. Imported. In 14 colors. Misses S-XL 24" long #40533 \$16.99 **Save \$4 / 2 for \$14.99 each**



**BUY 2,
SAVE \$10**
Misses, petite,
tall & plus sizes!
from
\$34.99
each

Dyed-to-match cami



- Day Break
- Tropical Peach
- Oxford Tan
- Wild Lime
- Tropical Sea
- Morning Glory
- Red Lacquer
- Dark Navy
- Honey Wheat
- Caspian
- Coffee
- Pearl Blush
- White
- Black