



**Celebrate 2024 on the Millennium Green at
ARDLEIGH'S BIG LUNCH**

12noon to 4pm Saturday 8th June 2024

- Skylark & Jack Rabbit or bring your own picnic lunch
- Join in with Debbie's Dancers & Graham's music
 - APACE tent: live sustainably: ideas galore
 - Junk modelling. Art tent (with prizes)
 - Pre-School play area. Cake stall
 - Play cribbage. Win with Tombola
 - Children's races; Tug of War
 - Craft stall. Icecreams

It's another Free Family Fun Day on our Millennium Green



ARDLEIGH PARISH COUNCIL PRESENTS

ARDLEIGH COMMUNITY SHOWCASE

(AND ANNUAL PARISH ASSEMBLY)

Saturday 11 March
3pm-6.30pm
Ardleigh Village Hall

Family friendly
Free entry
Refreshments
Get involved!
All welcome

Please drop in
Homemade cakes
Annual Meeting 6pm

Meet local community groups and businesses
Find out more
Pylons and Substations
Forthcoming Elections
Community Ambitions
(environment, community hub, sports and leisure improvements)

If you are Community Group or Ardleigh business you can book a stall
<https://forms.office.com/e/ESU7pz68dB>

More details info@ardleigh-pc.gov.uk

Ardleigh Advertiser

STOP the pylons
Save Ardleigh
ardleighbymatters.org.uk

ARE YOU AWARE OF THE SCALE OF THE PYLONS GOING UP IN OUR VILLAGE AND THEIR IMPACT?

THIS MONTHS ISSUE
STOP THE PYLONS INFORMATION
Parish Council Update & Planning
Local History + Horticultural Society
Church Services
over 20 articles, events and club details inside....
JUBILEE CELEBRATION DETAILS INSIDE!

JUNE 2022

Ardleigh Advertiser

THIS MONTHS ISSUE
Parish Council Report | Planning, Pylons, Highways
Practical Action on Climate and Environment
Horticultural Society
Church Services
Articles, events and more.....

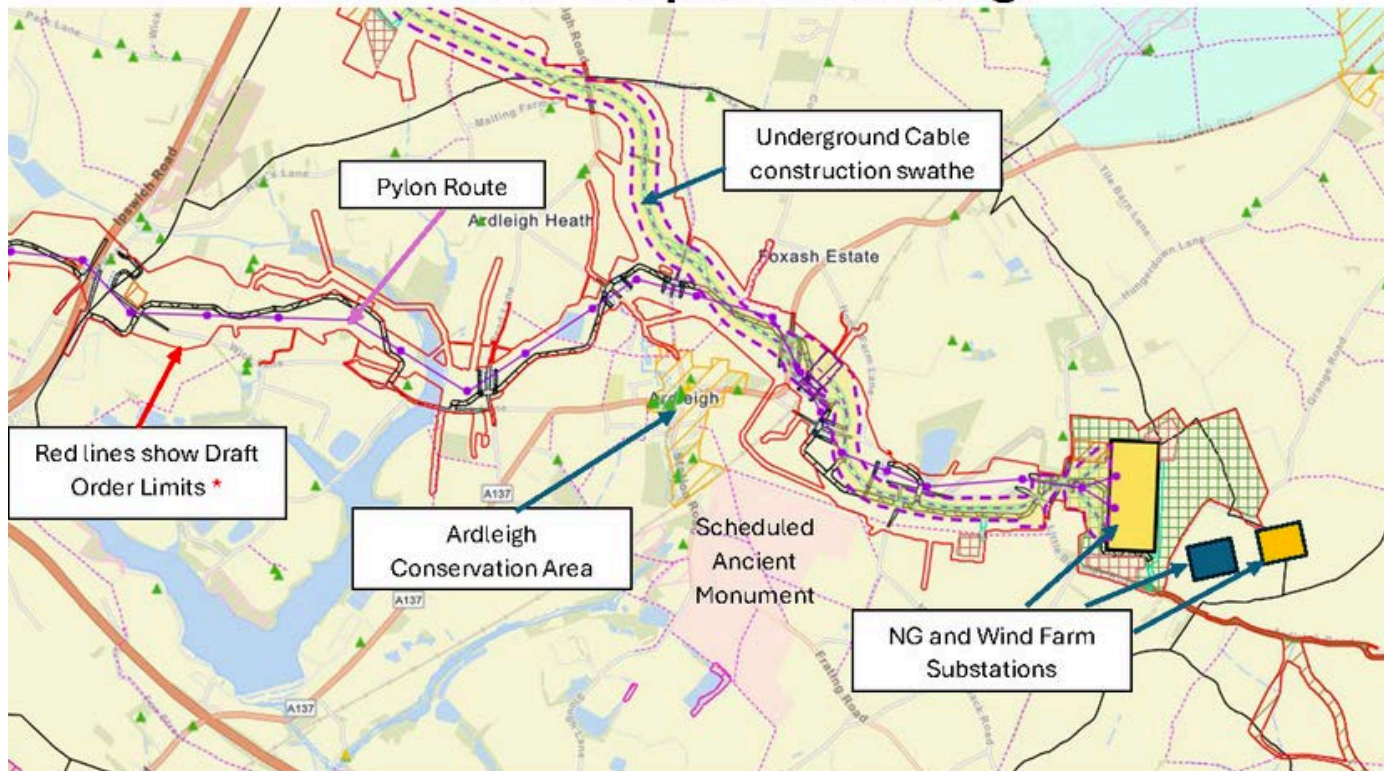
November 2023

Ardleigh Advertiser

THIS MONTHS ISSUE
SANTA'S VISIT TO ARDLEIGH
Parish Council Update
Planning
Police Report
Ardleigh Past Times
Remembrance Sunday
School Report
Cricket
Booktalk
Church Services
and much more....
COVID HELPLINE 01206 322025

DEC / JAN 2020/21

National Grid's plan for Ardleigh



* Draft Order Limits show areas within which NG can build anything below on or above the surface, including Pylons, Underground Cables, haul roads, access roads, storage areas etc. Construction is a minimum of 3 years for Pylons alone!

NATIONAL GRID, PYLONS, SUBSTATIONS & RELATED DEVELOPMENTS

Public Information Event for residents of Ardleigh and Little Bromley

Friday 15th September (6.30pm for 7.00pm)
Ardleigh Village Hall, 17 Station Road, Ardleigh, CO7 7RS

Speakers include:

Officers from Tendring District and Essex County Councils

Sir Bernard Jenkin MP (MP for Harwich & North Essex)

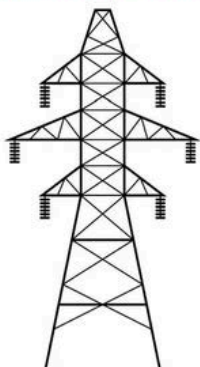
Rosie Pearson (Founder of Essex Suffolk Norfolk Pylon campaign)

There will be opportunity to ask questions on the evening but it would be helpful if questions can be submitted in advance.

To book your place at the meeting and/or submit a question, please log-on to Ardleigh Parish Council's booking form at:
<https://forms.office.com/e/TLc1KgRuVW>

This event has been organised by District Councillor Zoe Fairley and Essex County Councillor Carlo Guglielmi, for the residents of Ardleigh and Little Bromley. With thanks to Ardleigh Parish Council for hosting.

Provided by Jim Musk, on behalf of HVEDA, Unit C2 East Gores Farm, Salmons Ln, Colchester, CO6 1RZ. Printed by HVEDA, Unit C2 East Gores Farm, Salmons Lane, Colchester, CO6 1RZ.



CAMPAIGN GROUP WALK: ARDLEIGH

SUNDAY 13 AUGUST: WALK TO START @ 10:30am FROM 'SKYLARK'



Please join us for a sociable walk around Ardleigh that will take in sections of the proposed pylon route and the location of the proposed substations. The full circular route is around 4½ miles but feel free to join or leave the route wherever suits you, even if that means just meeting up at the start or finish.

Please arrive ahead of the start for photos etc. Refreshments etc will be available to buy at Skylark from 10:00am. Plenty of parking will be available. Dogs are welcome.

If possible, RSVP 'esnpwalk-ardleigh@mail.com', just so that we can get an idea of numbers and to provide the ability to send out any further details or updates.

Start location details:

Skylark, Prettyfields Vineyard, Dead Lane, Ardleigh, Colchester CO7 7PF

Details for obtaining campaign T-shirts, caps, banners etc are available on: www.pylonseastanglia.co.uk



Object to this destruction.

Ardleigh will be the worst hit location in the National Grid (NG) pylon project.

The map shows the devastation this will bring to our lovely village!!

NG have 'Public Information Events' at

- Lawford Venture 2000 Centre, Saturday 4 May 11am to 4pm
- Langham Community Centre, Thursday 16 May 2-7pm
- Great Bromley Village Hall, Friday 17 May 1-6pm

The Final Consultation process has begun. You can object immediately (see PylonsEastAnglia flyer) then send a detailed response towards the end of the consultation, before 18 June, when more information should be available.

Ardleigh has special issues, due to the proposed NG substation plus the subsequent substations for Five Estuaries & North Falls windfarms, and the Tarchon Interconnector!

Ardleigh Parish Council has arranged a meeting for residents on Friday 10 May 7pm for 7.30pm Ardleigh Village Hall. Speakers include Sir Bernard Jenkin MP and Rosie Pearson from the Essex, Suffolk, Norfolk Pylons campaign.

Guidance will be available for responses www.pylonseastanglia.co.uk/actions and www.ardleigh.website/pylons-and-substations

Please tell your friends, family and neighbours: the more voices that are heard the better.



Ardleigh Neighbourhood Plan 2020 - 2033



Prepared by Ardleigh Parish Council

December 2022



TALK TO US ABOUT HOUSING; AFFORDABLE, SHELTERED, SELF-BUILDS WHAT DOES ARDLEIGH NEED?

Complete the Ardleigh Neighbourhood Plan Consultation Questionnaire
<https://bit.ly/Ardleighnp>

We are waiting to hear from **YOU!**

THE ARDLEIGH NEIGHBOURHOOD PLAN CONSULTATION QUESTIONNAIRE

Our current response is 8.5% of the Parish population.
We are under represented in the under 30s and over represented in the over 60s.
We have a good distribution of responses across the Parish.
You have until the 31st January to complete the questionnaire. Please do not miss your opportunity.

HAVE YOU HAD YOUR SAY YET?

Respond to the **BIG ARDLEIGH CONSULTATION** by 31.1.21 for your chance to

WIN £100!

<https://bit.ly/ardleighnp>

Merry Christmas!

ARDLEIGH PARISH NEIGHBOURHOOD PLAN

Find out more at www.ardleigh.website and @ArdleighNP

About You
This helps us to understand better why you may be responding to questions in a particular way so that we can ensure the response is balanced.

31. Which of the following best describes you?
In education:
Employed - full time
Employed - part time
Self employed
Unemployed
Retired
Carer
Other
Prefer not to say

32. Where is your normal place of work?
At home in the Parish of Ardleigh
At a workplace in the Parish of Ardleigh
Other location
Not applicable or prefer not to say

33. Do you own a business in the Parish of Ardleigh?
Yes No Prefer not to say

34. Are you disabled?
Yes No Prefer not to say

35. What type of property do you currently live in?
 Flat
 Bungalow
 Sheltered accommodation
 Semi-detached house
 Terraced house
 Detached house

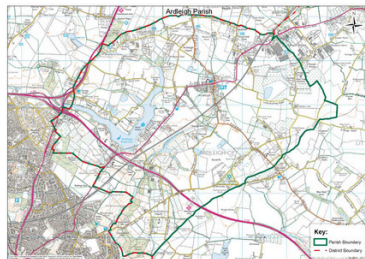
36. Is your home:
 Rented privately
 Rented from a registered provider of affordable housing
 Owned with mortgage
 Mortgage free
 Other (e.g. living with family or friends)

37. Does your current accommodation meet your housing needs?
Meets current needs
No, considering upstating within 18 months
No, considering downstating within 18 months
No, other reason
Prefer not to say

38. How many bedrooms do you have?
 1 2 3 4+

39. How many over 18's live in your household?
 0 1 2 3 4+ 5+

40. How many under 18's live in your household?
 0 1 2 3 4+ 5+



Do you have any other comments you would like to make in connection with this consultation questionnaire?

Copies of this questionnaire are available from either the Village Shop or the Post office.

Once completed you can:

- Return it to the Shop or Post Office
- Post it to Ardleigh Parish Council PO Box 12865 Colchester CO7 7EZ
- Alternatively you can complete on-line at <https://www.surveymonkey.co.uk/r/99XG5UJ>

Thank you for your input.

Ardleigh Parish Neighbourhood Plan Consultation Questionnaire

HAVE YOUR SAY



Privacy Notice
There is no obligation to complete the questionnaire. Any information you provide will be handled in accordance with Ardleigh Parish Council's Privacy Statement: <http://bit.ly/APCPPrivacyStatement>.

Ardleigh Parish Council is collecting this data to help develop a Neighbourhood Plan. Information about you is only requested to ensure we have collected feedback from a representative cross-section of the community or to enter the prize draw. Any personal data will be separated from the main body of the questionnaire before publication to ensure anonymity.

The answers you give will only be used for the Neighbourhood Plan and will be accessed only by authorised members of the Parish Council its working groups and our consultants. Data will not be passed to third parties and you will not be contacted about your answers. Personal data will only be held until the Neighbourhood Plan is completed. If you have questions please contact ardleighnp@gmail.com.

For further information, visit <https://ardleigh.website/have-your-say>



Celebrate the Coronation of King Charles III

Saturday May 6th
Watch the Coronation on TV

Sunday May 7th Ardleigh's Big Coronation Picnic

on the Millennium Green 12 noon to 4pm.
Bring your own picnic. Jack Rabbit, Skylark, coffee, ice-cream, cakes, Preschool play area, Debbie's dancers, face painting, children's art tent and Creation Station for crown making, races for all ages, tug of war, cribbage, bowls. Cricket on the Rec.
Opened by our very own King of Bling, Bobby George!

Monday 8th May

9.15 am Meet at Millennium Green to tidy up after Sunday event
10.30 am Meet at Ardleigh Church for a Village Walk, followed by coffee and cakes in the church, with stalls and activities too.





Community Ambitions - following the Neighbourhood Plan consultation- it's time to get involved



Community Hub



Sport & recreation



Environment and Climate Change

Do you want more from your Village Hall?

Complete the Ardleigh Neighbourhood Plan Consultation Questionnaire
<https://bit.ly/3rd1a1h0m>

HAVE YOUR SAY in the BIG ARDLEIGH CONSULTATION

Everyone - young and old - helps shape the future of our Parish with the Ardleigh Neighbourhood Plan

Have your say by 31.03.21

Complete the consultation questionnaire to be in with a chance to win £2000

Scan the QR code or pick up a paper copy from the Village Hall & Post Office

OUR COMMUNITY OUR FUTURE OUR SAY

ARDLEIGH PARISH NEIGHBOURHOOD PLAN

Find out more at www.ardleigh-website.co.uk and @ardleighparish

We are waiting to hear from YOU!

THE ARDLEIGH NEIGHBOURHOOD PLAN CONSULTATION QUESTIONNAIRE

- Our current response is 35% of the Parish population
- We are under represented in the under 30s and over represented in the over 50s
- We have a good distribution of responses across the Parish
- You have until the 31st January to complete the questionnaire. Please do not miss your opportunity

40 YEARS OF ARDLEIGH CRICKET

SATURDAY 5 JUNE V DEDHAM
SUNDAY 6 JUNE V FRESTON

BOTH GAMES START 1PM AT ARDLEIGH RECREATION GROUND

THE QUEEN'S BIRTHDAY JUBILEE 2022

THURSDAY 2ND JUNE 8PM - 10PM

BEACON LIGHTING PARTY ON THE REC & MILLENNIUM GREEN, ARDLEIGH

BEACON LIGHTING AT 8:45PM

BBQ BAR COFFEE

WWW.SKYLARKSOCIAL.CO.UK







Dedham and Ardleigh



We've been operating one year on 23rd March 2021!

We have together responded to 491 calls

Thank you to all our helpers

