

15930 S. Mur-Len Rd.

OLATHE, KS 66062



**PRIEB**  
PROPERTY  
MANAGEMENT



## HIGHLIGHTS

- Less than 10 minutes from I-35
- Company Signage space available on bldg.
- Price Chopper Anchored
- 1200 sq ft retail/office space
- Current Chiropractic office
- Located next to popular restaurant, In large residential area near schools
- Just minutes from 169 Hwy and 151<sup>st</sup> St, with many restaurants, gas stations and shopping nearby
- Amble drive by traffic with great street view from 159<sup>th</sup> St.

## FOR LEASE

\$1,500/mo + monthly CAM



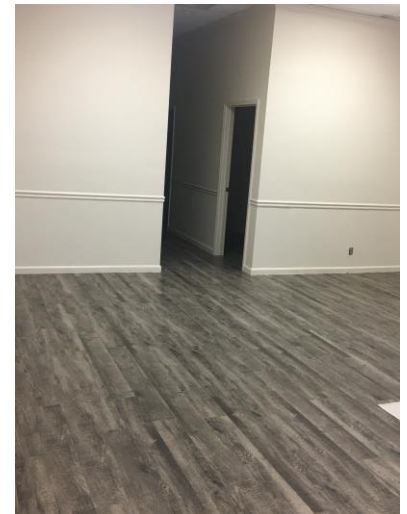
Prieb Property Management  
Office: (913) 575-6700  
Commercial@priebpropmgmt.com

# PHOTOS

15930 S. Mur-Len Rd.



**DRIEB**  
PROPERTY  
MANAGEMENT

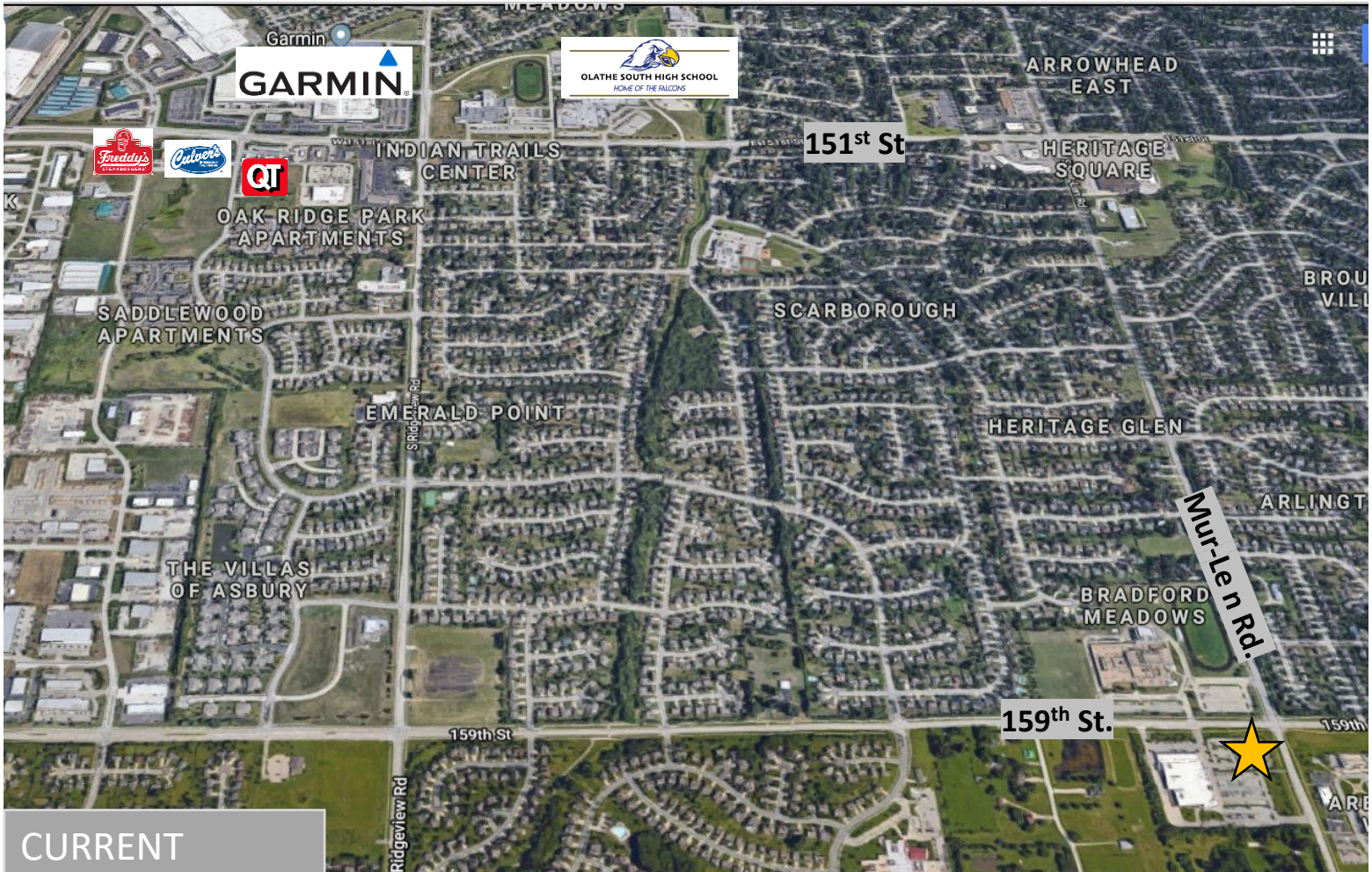


# AERIAL

15930 S. Mur-Len Rd.



**PRIEB**  
PROPERTY  
MANAGEMENT



## CURRENT TENANTS:

- Carmen's Cocina
- UPS Store
- Great Clips
- Luxury Nails
- Insurance Agency
- Edward Jones Investments
- Liquor Store



# FLOOR PLAN

15930 S. Mur-Len Rd.



**PRIEB**  
PROPERTY  
MANAGEMENT

