

18877, 18883 & 18889 W. 158th St.
OLATHE, KS 66062



PRIEB
PROPERTY
MANAGEMENT



HIGHLIGHTS

- Less than 10 minutes from I-35
- Company Signage space available on bldg.
- Heated Warehouse
- 3,350 sq ft of Office Space
- 2,275 sq ft of Warehouse space with 18' ceilings
- 1 Rear overhead door & 1 Man door
- Just minutes from 169 Hwy and 151st St, with many restaurants, gas stations and shopping nearby
- Amble drive by traffic with great street view from 159th St.

FOR LEASE

\$4,220/mo
+ monthly CAM



Prieb Property Management
Office: (913) 575-6700
Commercial@priebpropmgmt.com

AERIAL

18877, 18883 & 18889 W 158th ST.



DRIEB
PROPERTY
MANAGEMENT



CURRENT TENANTS:

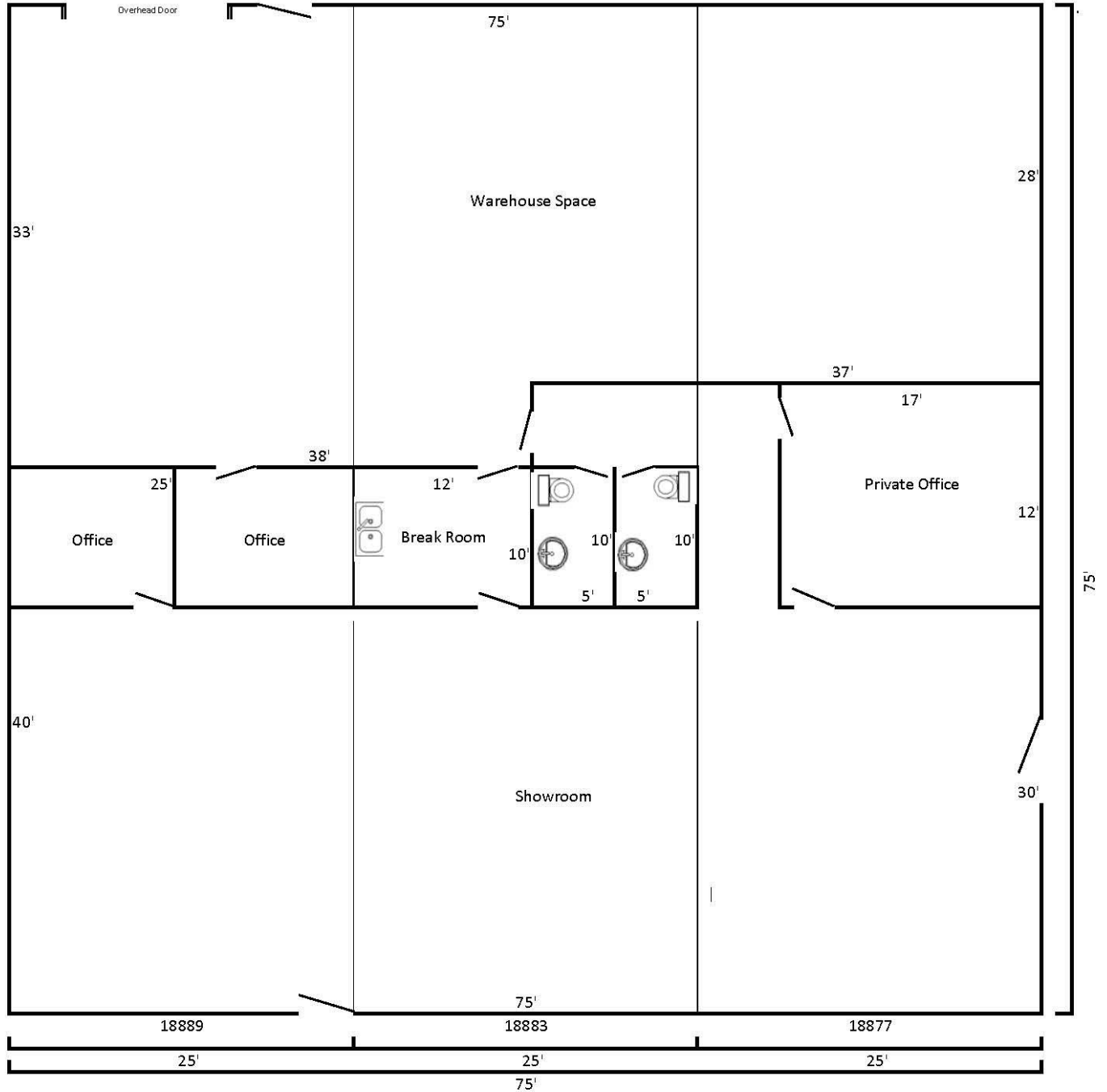
- Small Engine Repair
- Construction Offices
- Dance Studio
- Security Company
- Crossfit Gym
- Medical Equipment Supply
- General Office Space

FLOOR PLAN (END CAP)

18877, 18883 & 18889 W 158th ST.



DRIEB
PROPERTY
MANAGEMENT



18877, 18883, 18889 W. 158th St.