

15930 S. Mur-Len Rd.

OLATHE, KS 66062



**PRIEB**  
PROPERTY  
MANAGEMENT



## HIGHLIGHTS

- Less than 10 minutes from I-35
- Company Signage space available on bldg.
- Price Chopper Anchored
- 1200 sq ft retail/office space
- Current Chiropractic office
- Located next to popular restaurant, In large residential area near schools
- Just minutes from 169 Hwy and 151<sup>st</sup> St, with many restaurants, gas stations and shopping nearby
- Amble drive by traffic with great street view from 159<sup>th</sup> St.

## FOR LEASE

\$1,500/mo + monthly CAM



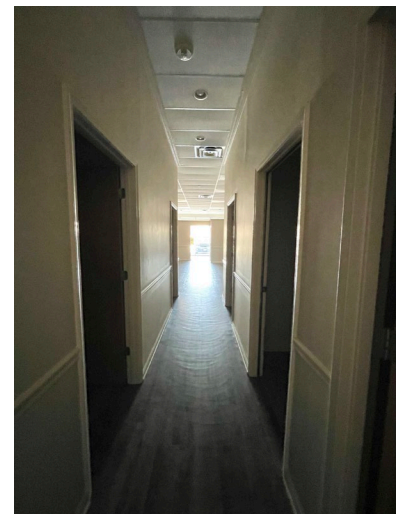
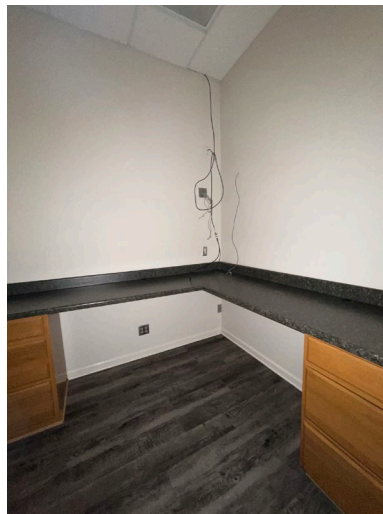
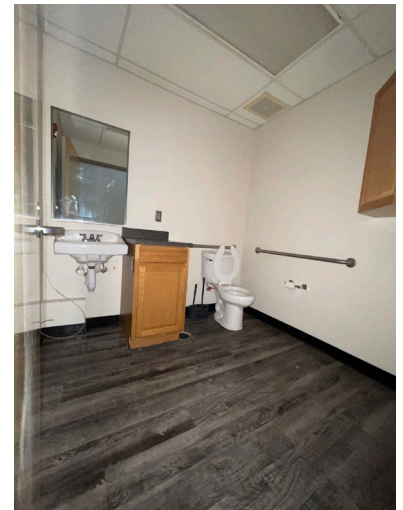
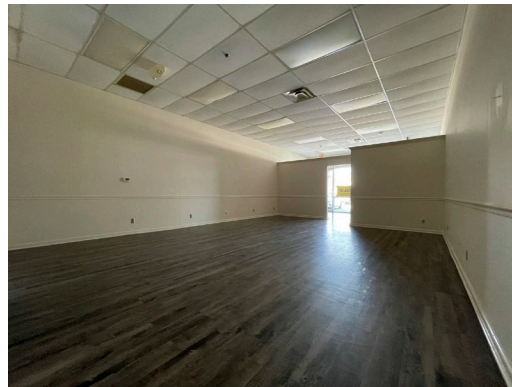
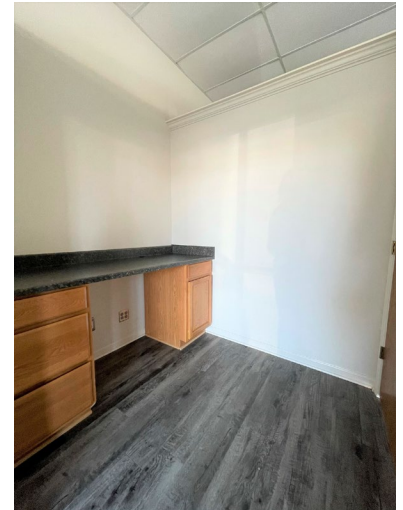
Prieb Property Management  
Office: (913) 575-6700  
Commercial@priebpropmgmt.com

# PHOTOS

15930 S. Mur-Len Rd.



**DRIEB**  
PROPERTY  
MANAGEMENT

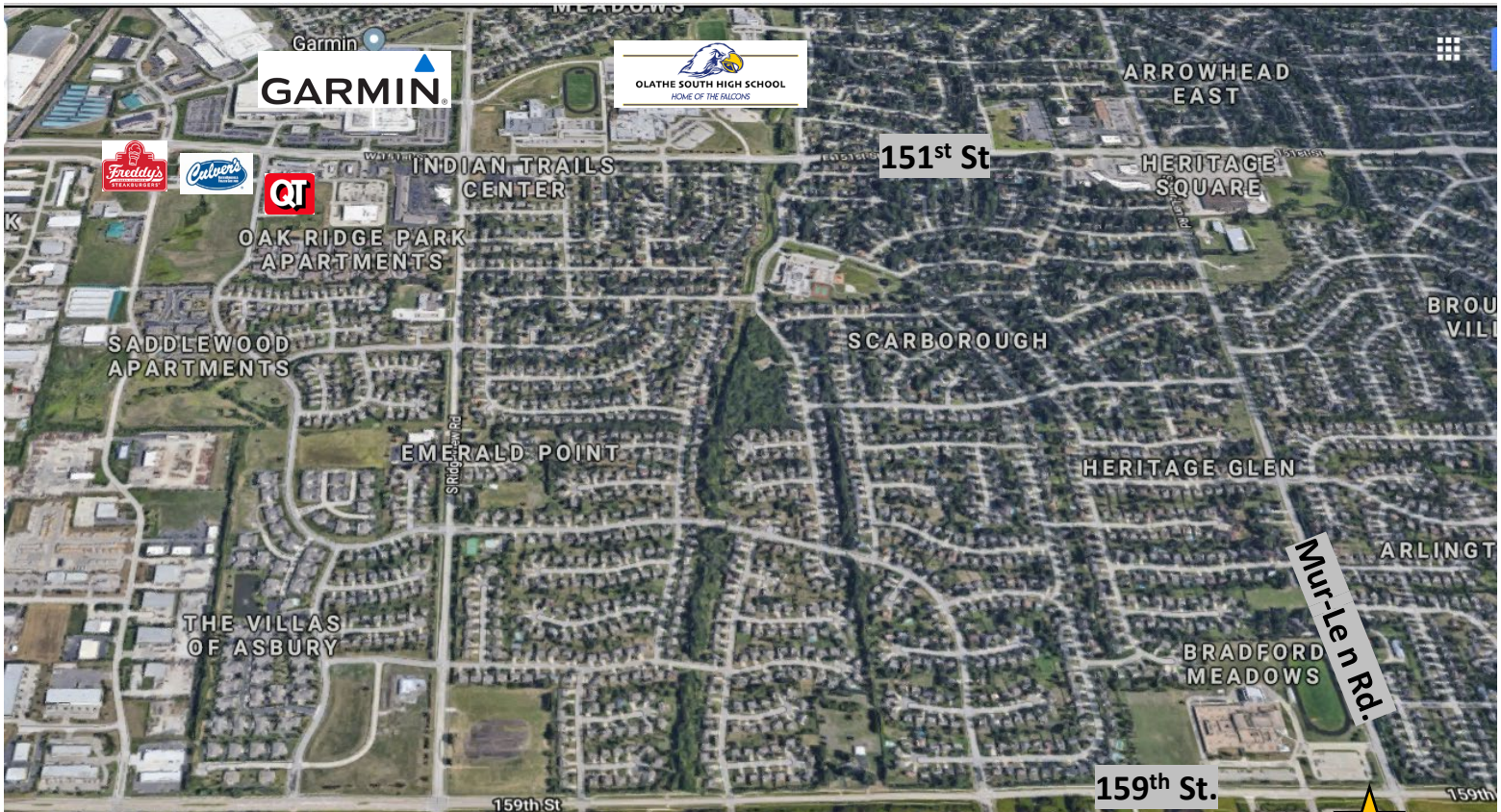


# AERIAL

15930 S. Mur-Len Rd.



**PRIEB**  
PROPERTY  
MANAGEMENT



## CURRENT TENANTS:

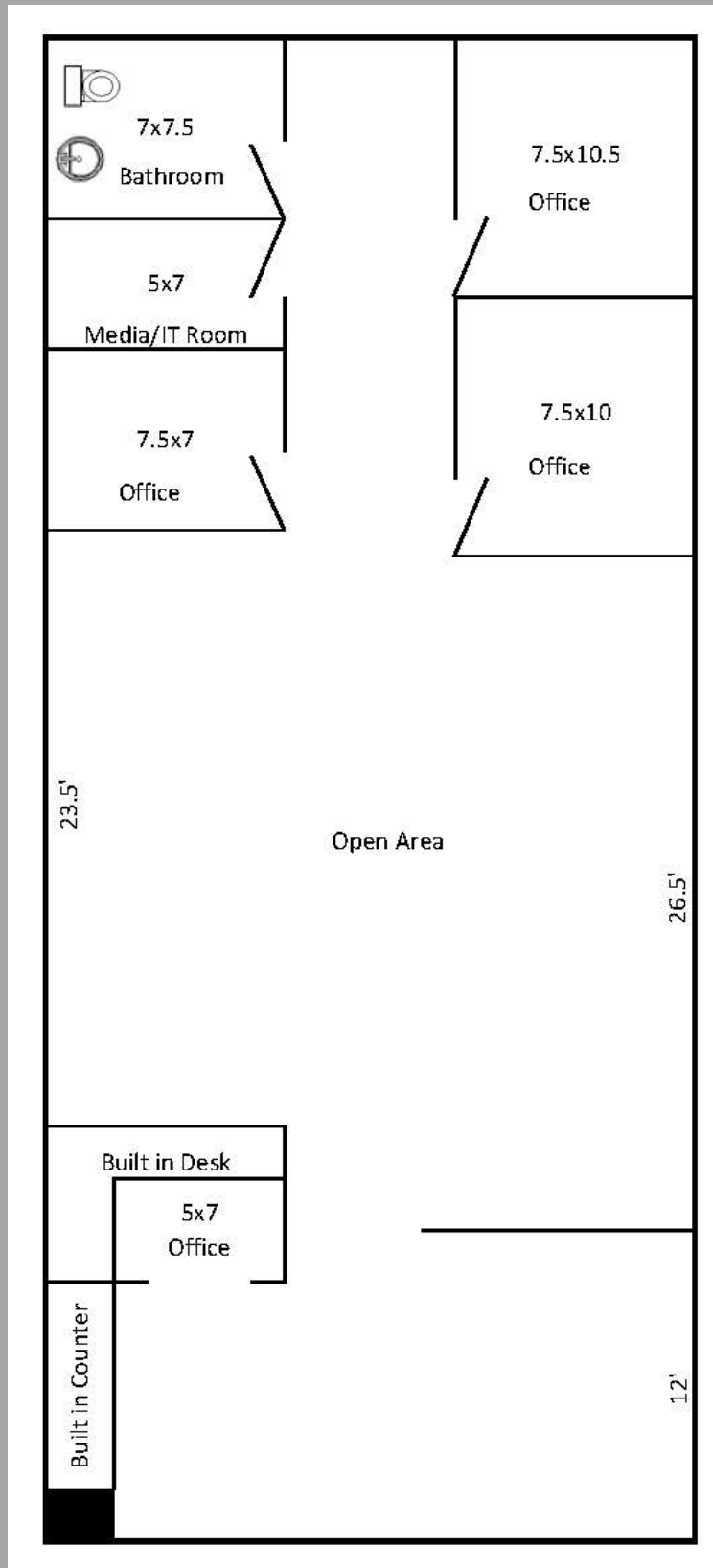
- Carmen's Cocina
- UPS Store
- Great Clips
- Luxury Nails
- Insurance Agency
- Edward Jones Investments
- Liquor Store

# FLOOR PLAN

15930 S. Mur-Len Rd.



**PRIEB**  
PROPERTY  
MANAGEMENT

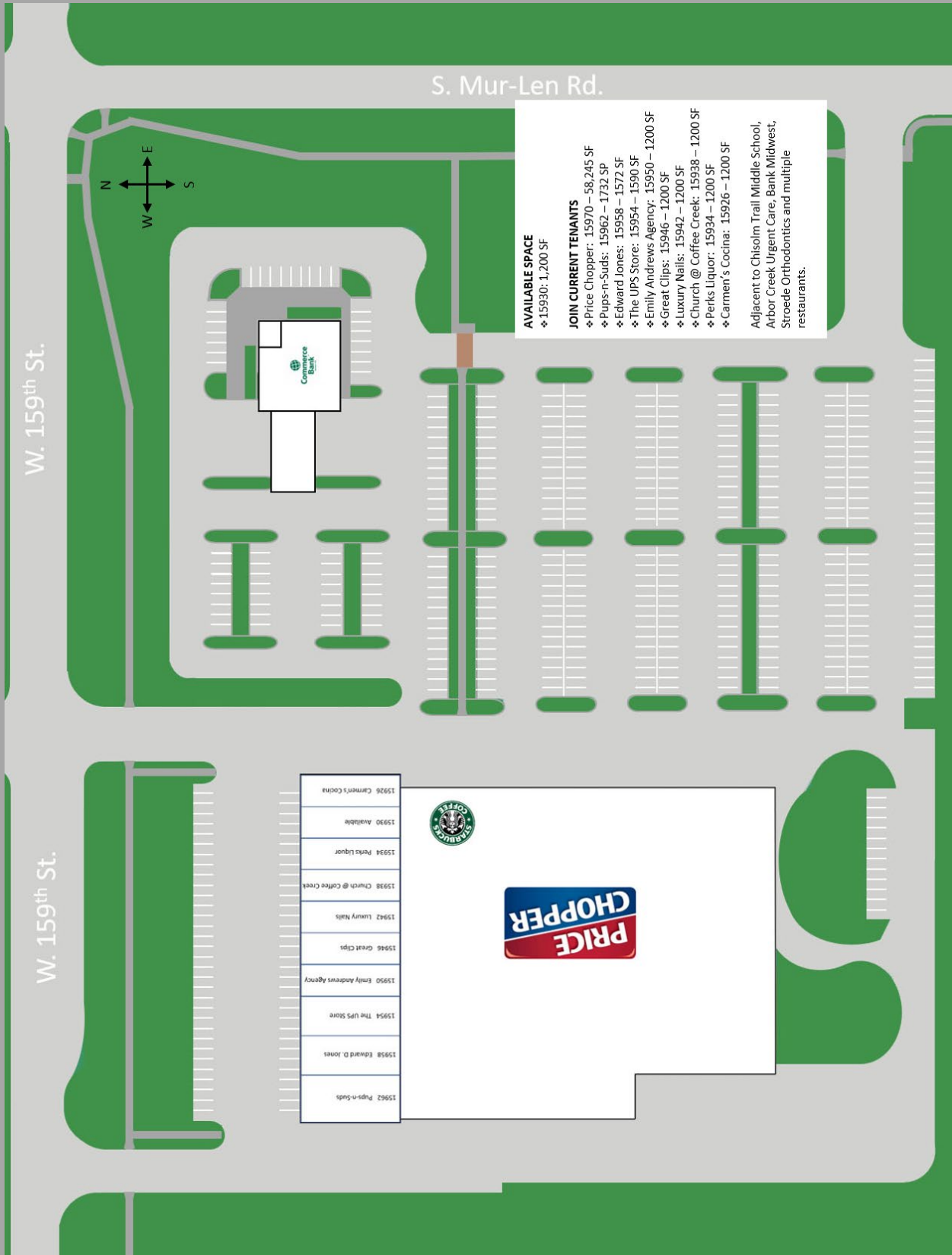


# SITE PLAN

15930 S. Mur-Len Rd.



**PRIEB**  
PROPERTY  
MANAGEMENT



**AVAILABLE SPACE**  
❖ 15930: 1,200 SF

**JOIN CURRENT TENANTS**  
❖ Price Chopper: 15970 – 58,245 SF  
❖ Pups-n-Suds: 15962 – 1732 SF  
❖ Edward Jones: 15958 – 1572 SF  
❖ The UPS Store: 15954 – 1590 SF  
❖ Emily Andrews Agency: 15950 – 1200 SF  
❖ Great Clips: 15946 – 1200 SF  
❖ Luxury Nails: 15942 – 1200 SF  
❖ Church @ Coffee Creek: 15938 – 1200 SF  
❖ Perks Liquor: 15934 – 1200 SF  
❖ Carmen's Cocina: 15926 – 1200 SF

Adjacent to Chisolm Trail Middle School, Arbor Creek Urgent Care, Bank Midwest, Stroede Orthodontics and multiple restaurants.

15926	Carmen's Cocina
15930	Available
15934	Perks Liquor
15938	Church @ Coffee Creek
15942	Luxury Nails
15946	Great Clips
15950	Emily Andrews Agency
15954	The UPS Store
15958	Edward D. Jones
15962	Pups-n-Suds