



Ravenscroft Red Angus
ANNUAL PRODUCTION SALE

2.26.22 | 2 PM Central | Valentine, NE



CUSTOMERS & FRIENDS

SALE INFORMATION

Bulls are available for review at the ranch located in central Cherry County 35 miles south of Nenzel, NE. February 26 they will be on display at Valentine Livestock, Valentine, NE. Feel free to come look or call us with any questions you may have.

If you can't make it in person the sale will be broadcasted live on DVAuction. Catalog and videos are available for viewing on DVAuction.com

DVAuction
Broadcasting Real-Time Auctions

THIS SALE WILL BE BROADCAST LIVE ON THE INTERNET.

Visit www.DVAuction.com and register today.
For general questions please contact our office:
(402) 316-5460 or support@dvauction.com

Again this year Bowlin Cattle Co. will be selling 50 Black Angus bulls immediately after the red bulls.

SALE DAY PHONE NUMBERS

Eric Ravenscroft..... 402-322-9248

Shannon Ravenscroft 402-389-0068

Auctioneer

Matt Lowery..... 308-750-6119

Sale Representatives

Ryan Sexson..... 402-389-1671

Tim Goodnight 402-389-0658

RED ANGUS ASSOCIATION

Harold Bertz 816-661-2289

Ringmen

Jason Hansen 402-649-0500

Drew Feller..... 402-841-4215

DVAuction

Tami McIntosh..... 308-870-3661

SCHEDULE OF EVENTS

Friday February 26 bulls will be on display at Valentine Livestock.

Saturday February 27 2:00 PM (CST) Red Angus bulls sell first, immediately after Bowlin Cattle Co Black Angus bulls sell.

HEALTH

All Red Angus bulls are coming virgin two-year-olds that have been tested for breeding soundness by Justin Ward DVM Valentine, NE 402-376-1571.

Scrotal measurements will be available on a supplement sheet on ravenscroftredangus.com and sale day.

Cattle going to out of state buyers will need to be trich tested following the sale. The tests will be performed quickly after the sale.

BREEDING GUARANTEE

Bulls selling at \$3000 or more are guaranteed through the first breeding season defined as 60 days following 1st turn out. If a fertility problem occurs preventing the bull to perform as a breeder, a replacement bull of similar value will be provided if available. If a suitable replacement is not available, credit for the full purchased price, less salvage value, will be issued to the buyer for next year's sale. Please notify us as soon as possible should an injury occur and prior to the injured bull being sold for salvage. All claims must be made by September 15, 2022. This does not cover poor management or neglect.

DELIVERY

Free delivery within Nebraska and to central points to neighboring states. We will assist all buyers on delivery the cheapest way possible.

Bulls picked up and paid for the day of the sale will receive a \$100 discount.

ANNOUNCEMENTS

Announcements made sale day and from the auction block during the sale take precedence over printed material in the catalog.

EPDs in catalog as of January 15, 2022

SALE TERMS & CONDITIONS

Cattle will sell under the standard terms and conditions as recommended by the Red Angus Association of America. redangus.org

AIRPORT

Valentine Municipal Airport. (402) 376-1611

GREETINGS

Thank you for taking the time to look at our bull line up. This is our ninth annual sale. The majority of our bulls sold in the last seven years have stayed in the Nebraska Sandhills region. The best compliment we receive is how great our bulls look when they come out of the cows in the fall. We want to develop bulls that are going to get the job done and hold up in any type of environment.

We are the fourth-generation family to be ranching in the Nebraska Sandhills of Cherry County. The family ranch is the Three Bar Ranch. The ranch is a commercial cow/calf and yearling operation that has focused on rotational grazing practices since the 1980's. We calve our heifers in April and the cows will pasture calve in May and June. In the winter our cows are run on cake and range. We run our registered cows in the same manner as the commercial herd. We feel there should not be a difference between how you run a seed stock cow and a commercial one.

We believe the slower development of our bulls adds to the longevity of them. The bull calves are not pushed and will graze throughout the summer like our yearling steers; this shows us which calves have the performance to grow in our environment. Performance is still a must in how we develop our bulls. The bulls continue grazing throughout the summer until November, when we start feeding them a protein pellet and hay in a 300-acre pasture until sale day. The two and a half days at Valentine Livestock are the longest time these bulls have ever been in a pen.




These sale bulls are the top half of our 2020 Bull crop.

Thanks for taking the time to look at our program.

Eric & Shannon Ravenscroft

CONNECT WITH US

 RavenscroftRedAngus
RavenscroftRedAngus.com

AGAIN THIS YEAR

We are excited to have Bowlin Cattle Company selling 40 Black Angus Bulls immediately following our sale. Catalog and videos available at DVAuction.com.



1 RAVN LEADING EDGE H058

RAAA# DOB Act. BW Cat. % Dam MPPA Dam DOB
 4318397 4-30-20 77 A 100%AR 103 4-10-11

5L LEADING EDGE 1221-79A
 5L LEADING EDGE 15383-117C
 5L RED BIRD 411-15383

BUF CRK THE RIGHT KIND U199
 5L BLACKBIRD 5519-1221
 5L PURSUIT 3244-127X
 5L RED BIRD 1312-411

Out of a solid cow from Hall Red Angus.
 109 MPPA on 9 calves

LONGK FUTURE DESIGN 734T
 HLH LK FUTURE MS 6159 1318
 HLH MS CUB 3068 6159

5L FUTURE DESIGN 893-6405
 BIEBER KAREN 8217
 FEDES CUB 311
 HLH MS CHEROKEE 820 3068

RATIOS				
BW	WW	YW	REA	IMF
91	95	95	109	91

ProS	HB	GM	CED	BW	WW	YW	MILK	ME	HPG	CEM	STAY	MARB	REA
100	79	22	16	-3.9	58	83	28	-2	11	9	16	0.45	0.23
46%	23%	77%	14%	15%	57%	76%	23%	30%	49%	15%	45%	39%	23%



2 RAVN LAKOTA RIDGE H062

RAAA# DOB Act. BW Cat. % Dam MPPA Dam DOB
 4318533 4-30-20 86 A 100%AR 102 5-08-17

GMRA TRILOGY 0226
 RAVN LAKOTA RIDGE D641
 RAVN TILLY X014

MESSMER PACKER S008
 GMRA LAKOTA 625
 BCRR RIDGE 8124U
 BCRR 4F TILLY2 793T

Great structure and rib shape

BROWN PURSUIT A7670
 RAVN CYNTHIA E749
 DAMAR CYNTHIA X179

BROWN JYJ REDEMPTION Y1334
 BROWN MS SEQUOYA X7593
 BADLANDS DESIGN 225
 DFRA MATTIE T753

RATIOS				
BW	WW	YW	REA	IMF
105	103	101	97	94

ProS	HB	GM	CED	BW	WW	YW	MILK	ME	HPG	CEM	STAY	MARB	REA
123	63	60	13	-2.5	60	93	26	2	13	8	14	0.68	0.15
15%	52%	8%	51%	36%	50%	56%	40%	53%	22%	24%	70%	6%	37%



3 RAVN 3350A H018

RAAA# DOB Act. BW Cat. % Dam MPPA Dam DOB
 4318463 4-07-20 75 A 100%AR 105 5-19-14

PARINGA IRON ORE E27
 HXC 3350A
 HXC 426P

TE MANIA ADA A149
 STORTH OAKS LOWAN C1(TW)
 LCC ABOVE & BEYOND 1300J
 HXC QUEEN MA650

Dam B456 has a MPPA 104 on six calves

BW ratio 87 to a WW ratio of 102

ANDRAS NEW LOOK 2012
 RAVN LARKABA B456
 CHOAT LARKABA 2110-74X

ANDRAS IN FOCUS B152
 ANDRAS MISSY 7031
 5L NORMANDY CANYON 6024
 BLUE RIDGE LARKABA 2110

RATIOS				
BW	WW	YW	REA	IMF
87	102	102	102	114

ProS	HB	GM	CED	BW	WW	YW	MILK	ME	HPG	CEM	STAY	MARB	REA
117	87	30	17	-4.4	48	82	25	2	11	10	19	0.41	-0.02
21%	13%	60%	5%	10%	86%	79%	49%	52%	60%	3%	7%	48%	77%

4 RAVN LAKOTA RIDGE H029

RAAA# DOB Act. BW Cat. % Dam MPPA Dam DOB
 4318603 4-11-20 66 A 100%AR 95 4-28-18

GMRA TRILOGY 0226
 RAVN LAKOTA RIDGE D641
 RAVN TILLY X014

MESSMER PACKER S008
 GMRA LAKOTA 625
 BCRR RIDGE 8124U
 BCRR 4F TILLY2 793T

Dam is a daughter to lot 3's dam

66 lb BW

PIE CINCH 4126
 RAVN LARKABA F856
 RAVN LARKABA B456

LSF SAGA 1040Y
 TKP BONNE BEL 110
 ANDRAS NEW LOOK 2012
 CHOAT LARKABA 2110-74X

RATIOS				
BW	WW	YW	REA	IMF
99	94	102	93	116

ProS	HB	GM	CED	BW	WW	YW	MILK	ME	HPG	CEM	STAY	MARB	REA
126	83	43	14	-3.1	58	95	26	2	13	8	18	0.47	0.02
12%	17%	29%	32%	25%	59%	52%	43%	51%	23%	21%	21%	35%	68%

5 RAVN RED ROCK H0105

RAAA# DOB Act. BW Cat. % Dam MPPA Dam DOB
 4318349 5-15-20 92 A 100%AR 108 2-09-09

C-T RED ROCK 5033
 FEDES RED ROCK A56-E311
 FEDES BLOCKANA Y33 A56

BROWN JYJ REDEMPTION Y1334
 C-T VERDI 1030
 BECKTON EPIC R397 K
 FEDES BLOCKANA Y33

Dam has a 108 MPPA on nine calves

Wix cow line has worked very well for us

PAULS CHIEFLINE 5140
 PAULS MISS WIX 919
 PAULS MISS WIX 563

BFCK CHEROKEE CNYN 4912
 BJR TIDY BEE 1193-107
 CONNEALY FRONTLINE
 MISS WIX 8011 OF MC CUMBER

RATIOS				
BW	WW	YW	REA	IMF
108	113	106	110	123

ProS	HB	GM	CED	BW	WW	YW	MILK	ME	HPG	CEM	STAY	MARB	REA
113	67	46	12	-1.3	69	111	24	9	11	6	18	0.52	0.37
25%	43%	24%	63%	59%	16%	18%	56%	89%	45%	72%	20%	25%	8%



6 RAVN LINEBACKER H085

RAAA# DOB Act. BW Cat. % Dam MPPA Dam DOB
4318511 5-11-20 74 A 100%AR 99 4-20-16

Moderate BW with good Growth

5L DEFENDER 560-30Z
RAVN LINEBACKER C537
RAVN BONNEBELL A325

5L ADVOCATE 817-14W
5L BLACK ADINA 525-560
BADLANDS STATEMENT 70Y
PAULS BONNEBELL 124

HXC JULIAN JAY 1118Y
RAVN FOXY D630
RAVN FOXY Y140

BECKTON JULIAN GG B571
HXC JAYLO LB136
SIX MILE TIMBERLAKE 180T
162L BCRR

RATIOS				
BW	WW	YW	REA	IMF
87	100	102	93	100

ProS	HB	GM	CED	BW	WW	YW	MILK	ME	HPG	CEM	STAY	MARB	REA
77	42	35	16	-4.4	64	104	20	3	13	7	12	0.5	0.12
83%	87%	48%	9%	10%	32%	31%	90%	58%	25%	44%	88%	29%	44%



Tyler in Cheyenne

7 RAVN LEADING EDGE H087

RAAA# DOB Act. BW Cat. % Dam MPPA Dam DOB
4318485 5-11-20 81 A 100%AR 100 4-19-15

Smooth made bull
Stacked with calving ease

5L LEADING EDGE 1221-79A
5L LEADING EDGE 15383-117C
5L RED BIRD 411-15383

BUF CRK THE RIGHT KIND U199
5L BLACKBIRD 5519-1221
5L PURSUIT 3244-127X
5L RED BIRD 1312-411

HXC 3350A
RAVN LADY C580
RAVN LADY A350

PARINGA IRON ORE E27
HXC 426P
SIX MILE SAKIC 818W
PKS LADY 558R

RATIOS				
BW	WW	YW	REA	IMF
94	96	94	101	103

ProS	HB	GM	CED	BW	WW	YW	MILK	ME	HPG	CEM	STAY	MARB	REA
123	91	32	18	-5.3	48	71	27	-10	11	11	17	0.48	0.04
15%	9%	56%	3%	4%	86%	90%	30%	10%	48%	3%	31%	33%	63%



8 RAVN LINEBACKER H092

RAAA# DOB Act. BW Cat. % Dam MPPA Dam DOB
4318465 5-12-20 91 A 100%AR 104 5-25-14

Easy fleshing power bull
Dam has a MPPA 104 on six calves

5L DEFENDER 560-30Z
RAVN LINEBACKER C537
RAVN BONNEBELL A325

5L ADVOCATE 817-14W
5L BLACK ADINA 525-560
BADLANDS STATEMENT 70Y
PAULS BONNEBELL 124

ANDRAS NEW LOOK 2012
RAVN FOXY B22
RAVN FOXY X022

ANDRAS IN FOCUS B152
ANDRAS MISSY 7031
RED 6 MILE FULL THROTTLE171T
162L BCRR

RATIOS				
BW	WW	YW	REA	IMF
106	115	120	115	118

ProS	HB	GM	CED	BW	WW	YW	MILK	ME	HPG	CEM	STAY	MARB	REA
76	42	34	11	0	75	125	22	8	12	4	15	0.43	0.23
85%	88%	50%	74%	82%	6%	4%	77%	85%	29%	91%	63%	43%	23%



9 RAVN 3350A H027

RAAA# DOB Act. BW Cat. % Dam MPPA Dam DOB
4318501 4-27-20 84 A 100%AR 103 2-25-16

Big ribbed bull
Dam is out of Bullis Creek
Red Angus Tilly cow line

PARINGA IRON ORE E27
HXC 3350A
HXC 426P

TE MANIA ADA A149
STORCH OAKS LOWAN C1(TW)
LCC ABOVE & BEYOND 1300J
HXC QUEEN MA650

GMRA TRILOGY 0226
BCRR TILLY 618D
BCRR TILLY 2226Z

MESSMER PACKER S008
GMRA LAKOTA 625
FEDDES ATLAS 867
BCRR 066X

RATIOS				
BW	WW	YW	REA	IMF
99	102	98	106	101

ProS	HB	GM	CED	BW	WW	YW	MILK	ME	HPG	CEM	STAY	MARB	REA
124	84	40	16	-3.4	53	85	25	2	12	10	18	0.53	0.22
14%	16%	36%	10%	21%	74%	73%	50%	54%	39%	4%	21%	23%	24%

10 RAVN LEADING EDGE H0115

RAAA# DOB Act. BW Cat. % Dam MPPA Dam DOB
4347517 5-17-20 95 A 100%AR 98 3-16-16

Leading Edge son with some punch
No ratios on this bull because we missed him when we registered calves

5L LEADING EDGE 1221-79A
5L LEADING EDGE 15383-117C
5L RED BIRD 411-15383

BUF CRK THE RIGHT KIND U199
5L BLACKBIRD 5519-1221
5L PURSUIT 3244-127X
5L RED BIRD 1312-411

RAVN WIDE TIMBER A304
RAVN WINDSONG D612
RAVN WINDSONG B436

LSF WIDE SPREAD 0052X
RAVN BLOXY Y102
BJR HOBO 800
BJR WINDSONG 2269

RATIOS				
BW	WW	YW	REA	IMF

ProS	HB	GM	CED	BW	WW	YW	MILK	ME	HPG	CEM	STAY	MARB	REA
123	92	31	15	-3.5	56	84	27	-4	13	9	18	0.4	0.27
15%	8%	57%	23%	20%	65%	75%	33%	25%	17%	14%	23%	50%	17%

11 RAVN LINEBACKER H066

RAAA# DOB Act. BW Cat. % Dam MPPA Dam DOB
 4318385 5-02-20 79 A 100%AR 98 8-14-10

Power bull with 79 lb BW
 Dark red

5L DEFENDER 560-30Z
 RAVN LINEBACKER C537
 RAVN BONNEBELL A325

5L ADVOCATE 817-14W
 5L BLACK ADINA 525-560
 BADLANDS STATEMENT 70Y
 PAULS BONNEBELL 124

RED 6 MILE FULL THROTTLE171T
 RAVN FOXY X022
 162L BCRR

RD TER-RON FULLY LOADED 540R
 RED SIX MILE WITZEL 360J
 BJR JR 107
 RCRA MS ARCTIC FOX

RATIOS				
BW	WW	YW	REA	IMF
93	104	110	100	102

ProS	HB	GM	CED	BW	WW	YW	MILK	ME	HPG	CEM	STAY	MARB	REA
70	38	33	13	-1.4	69	114	20	7	10	5	14	0.41	0.19
90%	92%	53%	49%	58%	18%	14%	89%	80%	64%	90%	71%	48%	29%



12 RAVN LINEBACKER H077

RAAA# DOB Act. BW Cat. % Dam MPPA Dam DOB
 4318495 5-06-20 86 A 100%AR 104 3-30-15

Good ratios across the board

5L DEFENDER 560-30Z
 RAVN LINEBACKER C537
 RAVN BONNEBELL A325

5L ADVOCATE 817-14W
 5L BLACK ADINA 525-560
 BADLANDS STATEMENT 70Y
 PAULS BONNEBELL 124

HXC BIG IRON 0024X
 RAVN MISS C LAZY B C540
 HLH LK FUTURE MS 6159 1318

BECKTON NEBULA P P707
 HXC 825U
 LONK FUTURE DESIGN 734T
 HLH MS CUB 3068 6159

RATIOS				
BW	WW	YW	REA	IMF
100	109	111	103	102

ProS	HB	GM	CED	BW	WW	YW	MILK	ME	HPG	CEM	STAY	MARB	REA
47	14	34	11	-0.3	78	125	21	11	11	4	11	0.49	0.3
99%	99%	51%	69%	78%	3%	5%	82%	93%	60%	95%	93%	32%	14%



Bulls in pasture

13 RAVN LINEBACKER H060

RAAA# DOB Act. BW Cat. % Dam MPPA Dam DOB
 4318503 4-30-20 88 A 100%AR 106 4-20-16

Dam has a 106 MPPA
 Really nice balanced
 Linebacker son

5L DEFENDER 560-30Z
 RAVN LINEBACKER C537
 RAVN BONNEBELL A325

5L ADVOCATE 817-14W
 5L BLACK ADINA 525-560
 BADLANDS STATEMENT 70Y
 PAULS BONNEBELL 124

RAVN WIDE TIMBER A304
 RAVN JULY DALLES D628
 PIE JULY DALLES 026

LSF WIDE SPREAD 0052X
 RAVN BLOXY Y102
 HXC MAGNUM 4464P
 TPIE JULY DALLES 821

RATIOS				
BW	WW	YW	REA	IMF
105	103	110	99	94

ProS	HB	GM	CED	BW	WW	YW	MILK	ME	HPG	CEM	STAY	MARB	REA
79	44	35	13	-1.6	71	115	21	4	13	6	13	0.49	0.18
80%	86%	47%	49%	54%	13%	13%	84%	63%	23%	78%	81%	32%	32%



14 RAVN LEADING EDGE H046

RAAA# DOB Act. BW Cat. % Dam MPPA Dam DOB
 4318507 4-25-20 80 A 100%AR 96 6-05-16

148 IMF ratio

5L LEADING EDGE 1221-79A
 5L LEADING EDGE 15383-117C
 5L RED BIRD 411-15383

BUF CRK THE RIGHT KIND U199
 5L BLACKBIRD 5519-1221
 5L PURSUIT 3244-127X
 5L RED BIRD 1312-411

ANDRAS NEW LOOK 2012
 RAVN BELLA D6115
 YKS BELLA 97X

ANDRAS IN FOCUS B152
 ANDRAS MISSY 7031
 LJC JULIAN 5006
 PKS LADY 558R

RATIOS				
BW	WW	YW	REA	IMF
95	91	89	114	148

ProS	HB	GM	CED	BW	WW	YW	MILK	ME	HPG	CEM	STAY	MARB	REA
120	93	26	16	-4.7	47	71	26	-6	12	9	18	0.51	0.12
18%	7%	67%	11%	8%	88%	90%	39%	18%	34%	9%	23%	27%	44%



15

RAVN LAKOTA RIDGE H012

RAAA#	DOB	Act. BW	Cat.	%	Dam MPPA	Dam DOB
4318581	4-05-20	61	A	100% AR	100	5-23-18

Heifer bull

GMRA TRILOGY 0226
RAVN LAKOTA RIDGE D641
RAVN TILLY X014

MESSMER PACKER S008
GMRA LAKOTA 625
BCRR RIDGE 8124U
BCRR 4F TILLY2 793T

MLK CRK ADVOCATE 4324
RAVN BLOXY F8119
RAVN BLOXY Z273

5L SECRET AGENT 117-229Z
MLK CRK EMUMAR 150
SIX MILE TIMBERLAKE 180T
RAVN BLOXY W904

RATIOS				
BW	WW	YW	REA	IMF
92	104	101	111	84

ProS	HB	GM	CED	BW	WW	YW	MILK	ME	HPG	CEM	STAY	MARB	REA
131	81	50	15	-4.2	57	90	26	-2	14	10	16	0.62	0.24
9%	20%	17%	16%	12%	62%	64%	36%	29%	11%	8%	48%	12%	21%

16

RAVN LINEBACKER H0123

RAAA#	DOB	Act. BW	Cat.	%	Dam MPPA	Dam DOB
4318483	5-22-20	61	A	100% AR	98	5-10-15

Dark red heifer bull

5L DEFENDER 560-30Z
RAVN LINEBACKER C537
RAVN BONNEBELL A325

5L ADVOCATE 817-14W
5L BLACK ADINA 525-560
BADLANDS STATEMENT 70Y
PAULS BONNEBELL 124

71 BW ratio to a 101 Weaning ratio

VGW GOOD YEAR 213
RAVN CARRIE C5100
RAVN CARRIE X021

5L DOUBLE DESIGN 1177-227W
VGW 554T-INDIGO 1008
MESSMER JUDGE 36N
BUF CRK CARRIE L395

RATIOS				
BW	WW	YW	REA	IMF
71	101	101	110	94

ProS	HB	GM	CED	BW	WW	YW	MILK	ME	HPG	CEM	STAY	MARB	REA
56	38	18	18	-5.5	61	98	23	4	12	8	11	0.39	0.19
97%	96%	83%	3%	4%	45%	46%	70%	66%	26%	24%	91%	53%	29%

17

RAVN LAKOTA RIDGE H070

RAAA#	DOB	Act. BW	Cat.	%	Dam MPPA	Dam DOB
4318541	5-03-20	68	A	100% AR	100	5-29-17

Heifer bull

3/4 brother to lot 15

GMRA TRILOGY 0226
RAVN LAKOTA RIDGE D641
RAVN TILLY X014

MESSMER PACKER S008
GMRA LAKOTA 625
BCRR RIDGE 8124U
BCRR 4F TILLY2 793T

MLK CRK ADVOCATE 4324
RAVN FOXY E7115
RAVN FOXY B22

5L SECRET AGENT 117-229Z
MLK CRK EMUMAR 150
ANDRAS NEW LOOK 2012
RAVN FOXY X022

RATIOS				
BW	WW	YW	REA	IMF
84	94	94	86	104

ProS	HB	GM	CED	BW	WW	YW	MILK	ME	HPG	CEM	STAY	MARB	REA
145	94	51	16	-4.7	52	83	26	1	14	10	18	0.61	0.08
3%	7%	16%	9%	8%	78%	76%	44%	46%	12%	4%	22%	13%	54%



Elle running barrels at Nationals

18

RAVN WIX H064

RAAA#	DOB	Act. BW	Cat.	%	Dam MPPA	Dam DOB
4318611	5-01-20	63	2	100% AR	107	5-20-18

Black red gene carrier

Dam and grand dam have excellent udders

5L LEADING EDGE 15383-117C
RAVN MR WIX E792
PAULS MISS WIX 563

5L LEADING EDGE 1221-79A
5L RED BIRD 411-15383
CONNELLY FRONTLINE
MISS WIX 8011 OF MC CUMBER

HCC DYNAMITE 625D
RAVN CARRIE F8111
RAVN CARRIE C5002

RAVN WIDESPREAD Z229
HCC MILLER'S PRIDE 420B
LSF WIDE SPREAD 0052X
BUF CRK CARRIE L395

RATIOS				
BW	WW	YW	REA	IMF
95	118	112	120	99

ProS	HB	GM	CED	BW	WW	YW	MILK	ME	HPG	CEM	STAY	MARB	REA
100	58	42	14	-2.2	65	99	29	1	10	8	15	0.43	0.36
46%	63%	32%	28%	41%	31%	42%	14%	45%	76%	24%	55%	43%	9%



LOT 18

19

RAVN LAKOTA RIDGE H097

RAAA#	DOB	Act. BW	Cat.	%	Dam MPPA	Dam DOB
4318529	5-13-20	84	A	100% AR	100	5-14-17

Ton of maternal merit

Tilly cow line crossed with Leading Edge

GMRA TRILOGY 0226
RAVN LAKOTA RIDGE D641
RAVN TILLY X014

MESSMER PACKER S008
GMRA LAKOTA 625
BCRR RIDGE 8124U
BCRR 4F TILLY2 793T

5L LEADING EDGE 15383-117C
RAVN YOGO E786
PIE YOGO 795

5L LEADING EDGE 1221-79A
5L RED BIRD 411-15383
BASIN HOBO 79E
PIE YOGO 5118

RATIOS				
BW	WW	YW	REA	IMF
102	97	98	87	98

ProS	HB	GM	CED	BW	WW	YW	MILK	ME	HPG	CEM	STAY	MARB	REA
133	84	50	15	-4	54	83	27	-4	12	9	17	0.59	0.09
8%	16%	18%	17%	14%	70%	77%	32%	25%	36%	12%	34%	15%	52%

20

RAVN RED ROCK H0111

RAAA#	DOB	Act. BW	Cat.	%	Dam MPPA	Dam DOB
4318521	5-17-20	87	A	100% AR	95	3-08-16

Canadian outcross dam

C-T RED ROCK 5033
FEDDES RED ROCK A56-E311
FEDDES BLOCKANA Y33 A56

BROWN JY REDEMPTION Y1334
C-T VERDI 1030
BECKTON EPIC R397 K
FEDDES BLOCKANA Y33

RED U2 UPROAR 283A
RAVN VERNICE D6009
RED WJ VERNICE 2253Z

RED BDL UPROAR 124U
RED FLYING KMS SENSATIONL 30
RED YY EXPEDITOR 3X
RED CROWFOOT VERNICE 6940S

RATIOS				
BW	WW	YW	REA	IMF
102	92	97	101	97

ProS	HB	GM	CED	BW	WW	YW	MILK	ME	HPG	CEM	STAY	MARB	REA
135	85	50	13	-3.2	50	88	25	-6	12	6	19	0.49	0.09
7%	15%	18%	46%	24%	82%	67%	52%	20%	32%	79%	10%	32%	52%

21 RAVN LAKOTA RIDGE H079

RAAA#	DOB	Act. BW	Cat.	%	Dam MPPA	Dam DOB
4318545	5-07-20	79	A	100% AR	97	4-14-17

104 IMF ratio

GMRA TRILOGY 0226
RAVN LAKOTA RIDGE D641
RAVN TILLY X014

MESSMER PACKER S008
GMRA LAKOTA 625
BCRR RIDGE 8124U
BCRR 4F TILLY2 793T

RAVN LINEBACKER C537
RAVN BLOCKANA E729
RAVN BLOCKANA C594

5L DEFENDER 560-30Z
RAVN BONNEBELL A325
VGW GOOD YEAR 213
RAVN BLOCKANA X06

RATIOS				
BW	WW	YW	REA	IMF
96	97	99	89	104

ProS	HB	GM	CED	BW	WW	YW	MILK	ME	HPG	CEM	STAY	MARB	REA
111	64	47	15	-3.6	61	97	22	1	14	8	13	0.57	0.1
28%	50%	23%	15%	18%	46%	48%	81%	46%	8%	22%	77%	17%	49%

22 RAVN WIX H0148

RAAA#	DOB	Act. BW	Cat.	%	Dam MPPA	Dam DOB
4318345	6-03-20	75	A	100% AR	100	1-27-07

Dam had a flawless udder at 13 years old

5L LEADING EDGE 15383-117C
RAVN MR WIX E792
PAULS MISS WIX 563

5L LEADING EDGE 1221-79A
5L RED BIRD 411-15383
CONNELLY FRONTLINE
MISS WIX 8011 OF MC CUMBER

BASIN HOB0 79E
PIE YOGO 795
PIE YOGO 5118

BUF CRK HOB0 2595
DOUBLE FORK 079Z
PERKS ADVANCE 121R
PIE MISS LODUKE 1100

RATIOS				
BW	WW	YW	REA	IMF
88	95	93	104	68

ProS	HB	GM	CED	BW	WW	YW	MILK	ME	HPG	CEM	STAY	MARB	REA
89	70	19	15	-3.3	53	78	24	-3	7	9	17	0.35	0.13
66%	38%	81%	16%	23%	75%	83%	58%	26%	97%	15%	30%	63%	42%

23 RAVN LINEBACKER H049

RAAA#	DOB	Act. BW	Cat.	%	Dam MPPA	Dam DOB
4318431	4-27-20	81	A	100% AR	92	5-04-13

Low BW Linebacker

5L DEFENDER 560-30Z
RAVN LINEBACKER C537
RAVN BONNEBELL A325

5L ADVOCATE 817-14W
5L BLACK ADINA 525-560
BADLANDS STATEMENT 70Y
PAULS BONNEBELL 124

SIX MILE SAKI 818W
RAVN LARKABA A347
CHOAT LARKABA 2110-74X

RED SIX MILE SAKI 832S
RED SIX MILE SELMA 156T
5L NORMANDY CANYON 6024
BLUE RIDGE LARKABA 2110

RATIOS				
BW	WW	YW	REA	IMF
94	90	97	97	97

ProS	HB	GM	CED	BW	WW	YW	MILK	ME	HPG	CEM	STAY	MARB	REA
52	46	6	14	-2.8	55	84	21	0	11	5	13	0.35	0
98%	83%	95%	29%	31%	70%	75%	85%	42%	47%	83%	80%	63%	72%

24 RAVN LAKOTA RIDGE H071

RAAA#	DOB	Act. BW	Cat.	%	Dam MPPA	Dam DOB
4318383	5-03-20	88	A	100% AR	97	1-31-10

Good hip and length

GMRA TRILOGY 0226
RAVN LAKOTA RIDGE D641
RAVN TILLY X014

MESSMER PACKER S008
GMRA LAKOTA 625
BCRR RIDGE 8124U
BCRR 4F TILLY2 793T

RED SOO LINE MOMENTUM 7051
RED JSTN ELORA 0136
RED JCC ELORA 203N

RED BCAR WILD CARD
RED SOO LINE BANE BERRY 5238
RED TER-RON MAMBO 28K
RED CUTARM ELORA 824Z

RATIOS				
BW	WW	YW	REA	IMF
103	92	93	93	110

ProS	HB	GM	CED	BW	WW	YW	MILK	ME	HPG	CEM	STAY	MARB	REA
139	97	42	11	-1.8	53	79	22	-10	15	7	17	0.57	0.02
5%	5%	32%	70%	49%	75%	82%	81%	10%	5%	39%	30%	17%	68%

25 RAVN LINEBACKER H0113

RAAA#	DOB	Act. BW	Cat.	%	Dam MPPA	Dam DOB
4318433	5-17-20	77	A	100% AR	103	5-12-13

Balanced calving epds to WW & YW epds

5L DEFENDER 560-30Z
RAVN LINEBACKER C537
RAVN BONNEBELL A325

5L ADVOCATE 817-14W
5L BLACK ADINA 525-560
BADLANDS STATEMENT 70Y
PAULS BONNEBELL 124

SIX MILE SAKI 818W
RAVN MISS DUKE A358
PIE DUKE MISS 081

RED SIX MILE SAKI 832S
RED SIX MILE SELMA 156T
HXC CONQUEST 4405P
TPIE DUKE MISS 8121

RATIOS				
BW	WW	YW	REA	IMF
89	98	97	81	95

ProS	HB	GM	CED	BW	WW	YW	MILK	ME	HPG	CEM	STAY	MARB	REA
56	41	15	14	-2.8	66	101	22	3	11	6	13	0.37	-0.04
98%	89%	87%	26%	31%	28%	38%	76%	57%	53%	78%	83%	58%	81%

26 RAVN LAKOTA RIDGE H011

RAAA#	DOB	Act. BW	Cat.	%	Dam MPPA	Dam DOB
4318571	4-05-20	68	A	100% AR	101	5-09-18

Calving ease on top and bottom of the pedigree

GMRA TRILOGY 0226
RAVN LAKOTA RIDGE D641
RAVN TILLY X014

MESSMER PACKER S008
GMRA LAKOTA 625
BCRR RIDGE 8124U
BCRR 4F TILLY2 793T

MLK CRK ADVOCATE 4324
RAVN MS LANCER F8102
HLH MSLANCER 5095 1193

5L SECRET AGENT 117-229Z
MLK CRK EMUMAR 150
BECKTON LANCER F442 T
HLH MS CHEROKEE 1024 5095

RATIOS				
BW	WW	YW	REA	IMF
102	101	98	100	70

ProS	HB	GM	CED	BW	WW	YW	MILK	ME	HPG	CEM	STAY	MARB	REA
131	80	51	16	-4	58	90	24	-2	13	9	16	0.58	0.28
9%	21%	16%	12%	14%	56%	63%	65%	31%	23%	12%	39%	16%	16%

27 RAVN LAKOTA RIDGE H006

RAAA#	DOB	Act. BW	Cat.	%	Dam MPPA	Dam DOB
4318595	4-03-20	65	A	100% AR	99	5-23-18

Heifer bull
3/4 brother to lot 26

GMRA TRILOGY 0226
RAVN LAKOTA RIDGE D641
RAVN TILLY X014

MESSMER PACKER S008
GMRA LAKOTA 625
BCRR RIDGE 8124U
BCRR 4F TILLY2 793T

MLK CRK ADVOCATE 4324
RAVN OWYHEE F8117
RAVN OWYHEE A308

5L SECRET AGENT 117-229Z
MLK CRK EMUMAR 150
SIX MILE TIMBERLAKE 180T
PAULS OWYHEE 102

RATIOS				
BW	WW	YW	REA	IMF
98	99	100	89	107

ProS	HB	GM	CED	BW	WW	YW	MILK	ME	HPG	CEM	STAY	MARB	REA
136	83	53	14	-2.6	60	93	26	-2	15	9	15	0.65	0.12
7%	17%	14%	32%	33%	51%	56%	39%	31%	5%	15%	54%	9%	44%



28 RAVN RED ROCK H0102

RAAA# DOB Act. BW Cat. % Dam MPPA Dam DOB
 4318487 5-14-20 86 A 100%AR 96 3-31-15

Good rib shape to this bull
 Out of a nice Defender cow

C-T RED ROCK 5033
 FEDES RED ROCK A56-E311
 FEDES BLOCKANA Y33 A56

BROWN JYJ REDEMPTION Y1334
 C-T VERDI 1030
 BECKTON EPIC R397 K
 FEDES BLOCKANA Y33

5L DEFENDER 560-30Z
 RAVN BELLA C545
 YKS BELLA 97X

5L ADVOCATE 817-14W
 5L BLACK ADINA 525-560
 LJC JULIAN 5006
 PKS LADY 558R

RATIOS				
BW	WW	YW	REA	IMF
100	99	97	106	86

ProS	HB	GM	CED	BW	WW	YW	MILK	ME	HPG	CEM	STAY	MARB	REA
104	57	47	14	-3.7	54	90	24	-1	11	5	16	0.59	0.16
40%	65%	23%	36%	17%	73%	64%	57%	37%	49%	82%	48%	15%	35%



2021 sale

29 RAVN LAKOTA RIDGE H034

RAAA# DOB Act. BW Cat. % Dam MPPA Dam DOB
 4318585 4-15-20 58 A 100%AR 99 5-06-18

Heifer bull
 Great disposition

GMRA TRILOGY 0226
 RAVN LAKOTA RIDGE D641
 RAVN TILLY X014

MESSMER PACKER S008
 GMRA LAKOTA 625
 BCRR RIDGE 8124U
 BCRR 4F TILLY2 793T

PIE CINCH 4126
 RAVN SHANIA F891
 RAVN SHANIA A352

LSF SAGA 1040Y
 TKP BONNE BEL 110
 BADLANDS STATEMENT 70Y
 PAULS SHANIA 5115

RATIOS				
BW	WW	YW	REA	IMF
88	98	97	90	91

ProS	HB	GM	CED	BW	WW	YW	MILK	ME	HPG	CEM	STAY	MARB	REA
123	82	40	15	-3.8	60	96	26	3	13	9	17	0.48	0.1
15%	18%	35%	22%	16%	48%	50%	41%	56%	21%	16%	30%	33%	49%



30 RAVN LAKOTA RIDGE H043

RAAA# DOB Act. BW Cat. % Dam MPPA Dam DOB
 4318535 4-24-20 67 A 100%AR 97 4-29-17

Heifer bull
 83 BW ratio to 101 YW

GMRA TRILOGY 0226
 RAVN LAKOTA RIDGE D641
 RAVN TILLY X014

MESSMER PACKER S008
 GMRA LAKOTA 625
 BCRR RIDGE 8124U
 BCRR 4F TILLY2 793T

HXC JULIAN JAY 1118Y
 RAVN DIPPITY DO E738
 PAULS DIPPITY DO 139

BECKTON JULIAN GG B571
 HXC JAYLO LB136
 SIX MILE FULL CONTROL 808W
 PAULS DIPPITY DO 784

RATIOS				
BW	WW	YW	REA	IMF
83	98	101	104	98

ProS	HB	GM	CED	BW	WW	YW	MILK	ME	HPG	CEM	STAY	MARB	REA
135	79	56	18	-6.5	53	85	25	-1	14	11	15	0.65	0.18
7%	23%	11%	3%	1%	75%	72%	46%	33%	11%	2%	59%	9%	32%



Jaylynn, Shannon and Elle taking in a HS football game

31 RAVN WIX H0138

RAAA# DOB Act. BW Cat. % Dam MPPA Dam DOB
 4318471 5-30-20 91 A 100%AR 96 3-17-14

Red Mr. Wix son
 Grand dam is our BUF CRK CARRIE flush cow

5L LEADING EDGE 15383-117C
 RAVN MR WIX E792
 PAULS MISS WIX 563

5L LEADING EDGE 1221-79A
 5L RED BIRD 411-15383
 CONNEALY FRONTLINE
 MISS WIX 8011 OF MC CUMBER

RED TER-RON RELOAD 703T
 RAVN CARRIE B4005
 BUF CRK CARRIE L395

RD TER-RON FULLY LOADED 540R
 RED TER-RON SAMARIA 103N
 GLACIER MARIAS 548
 BUF CR CARRIE VC1174

RATIOS				
BW	WW	YW	REA	IMF
106	89	95	92	102

ProS	HB	GM	CED	BW	WW	YW	MILK	ME	HPG	CEM	STAY	MARB	REA
75	46	29	11	-0.5	55	83	20	-4	9	5	13	0.39	0.02
86%	83%	62%	71%	75%	69%	76%	89%	25%	85%	81%	76%	53%	68%



32 RAVN H033

RAAA# DOB Act. BW Cat. % Dam MPPA Dam DOB
 4318447 4-14-20 92 3 50% AR 50% XX 102 3-25-14

One of our registered Red Angus ranch bulls visited the cows

Cow is a great cow 102 MPPA on six calves

UNIDENTIFIED REGISTERED SIRE

ANDRAS NEW LOOK 2012
 RAVN MISS DUKE B411
 RAVN MISS DUKE Z239

ANDRAS IN FOCUS B152
 ANDRAS MISSY 7031
 SIX MILE SAKIC 818W
 PIE DUKE MISS 081

RATIOS				
BW	WW	YW	REA	IMF
			0	0

ProS	HB	GM	CED	BW	WW	YW	MILK	ME	HPG	CEM	STAY	MARB	REA
108	58	51	10	-0.4	47	72	20	-11	10	6	13	0.45	-0.02
33%	64%	17%	83%	76%	88%	89%	92%	8%	64%	72%	76%	39%	77%



33 RAVN LAKOTA RIDGE H013

RAAA# DOB Act. BW Cat. % Dam MPPA Dam DOB
 4318563 4-06-20 85 A 100% AR 104 6-12-18

Good IMF & REA ratios

GMRA TRILOGY 0226
 RAVN LAKOTA RIDGE D641
 RAVN TILLY X014

MESSMER PACKER S008
 GMRA LAKOTA 625
 BCRR RIDGE 8124U
 BCRR 4F TILLY2 793T

RAVN LINEBACKER C537
 RAVN DYNA F8142
 SIX MILE DYNA 454U

5L DEFENDER 560-30Z
 RAVN BONNEBELL A325
 RD TER-RON FULLY LOADED 540R
 RED SIX MILE DYNA 699L

RATIOS				
BW	WW	YW	REA	IMF
124	110	103	102	102

ProS	HB	GM	CED	BW	WW	YW	MILK	ME	HPG	CEM	STAY	MARB	REA
80	43	37	8	0.7	68	105	23	1	14	3	13	0.57	0.2
80%	87%	43%	95%	90%	19%	30%	71%	47%	9%	98%	82%	17%	28%



2021 sale

34 RAVN LINEBACKER H056

RAAA# DOB Act. BW Cat. % Dam MPPA Dam DOB
 4318455 4-30-20 94 A 100% AR 109 5-07-14

Power bull

Dam has 109 MPPA on six calves

107 IMF ratio, 123 REA ratio

5L DEFENDER 560-30Z
 RAVN LINEBACKER C537
 RAVN BONNEBELL A325

5L ADVOCATE 817-14W
 5L BLACK ADINA 525-560
 BADLANDS STATEMENT 70Y
 PAULS BONNEBELL 124

ANDRAS NEW LOOK 2012
 RAVN WYO CARRIE B440
 BUF CRK CARRIE U203

ANDRAS IN FOCUS B152
 ANDRAS MISSY 7031
 BUF CRK CHEROKEE R051
 BUF CRK CARRIE 6278

RATIOS				
BW	WW	YW	REA	IMF
109	111	115	123	107

ProS	HB	GM	CED	BW	WW	YW	MILK	ME	HPG	CEM	STAY	MARB	REA
65	38	27	12	-0.3	71	116	25	7	13	4	13	0.43	0.28
94%	91%	66%	60%	78%	12%	12%	48%	79%	17%	91%	76%	43%	16%



35 RAVN LEADING EDGE H0131

RAAA# DOB Act. BW Cat. % Dam MPPA Dam DOB
 4318427 5-25-20 97 A 100% AR 104 5-13-13

Dam has 105 MPPA on five calves

Grand Dam still on the ranch at 14 years old

5L LEADING EDGE 1221-79A
 5L LEADING EDGE 15383-117C
 5L RED BIRD 411-15383

5L BLACKBIRD 5519-1221
 5L PURSUIT 3244-127X
 5L RED BIRD 1312-411

SIX MILE SAKIC 818W
 RAVN CRICKET A359
 PIE SODAK VAL 8190

RED SIX MILE SAKIC B325
 RED SIX MILE SELMA 156T
 LJC MISSION STATEMENT P27
 PIE

RATIOS				
BW	WW	YW	REA	IMF
113	104	108	113	111

ProS	HB	GM	CED	BW	WW	YW	MILK	ME	HPG	CEM	STAY	MARB	REA
104	65	39	12	-1.5	64	100	29	-1	10	7	16	0.42	0.28
40%	49%	37%	52%	56%	32%	41%	16%	35%	64%	46%	47%	45%	16%



36 RAVN LINEBACKER H068

RAAA# DOB Act. BW Cat. % Dam MPPA Dam DOB
4318527 5-03-20 88 A 100% AR 100 2-20-16

5L DEFENDER 560-30Z
RAVN LINEBACKER C537
RAVN BONNEBELL A325

5L ADVOCATE 817-14W
5L BLACK ADINA 525-560
BADLANDS STATEMENT 70Y
PAULS BONNEBELL 124

Dam goes back to really nice
Crowfoot cow

RED U2 UPROAR 283A
RAVN CROWFOOT D6003
RED CROWFOOT MS CHFLNE
9001W

RED BDL UPROAR 124U
RED FLYING KMS SENSATION L30
RED CROWFOOT COWBOY 7206T
RED CROWFOOT OMEGA 7057T

RATIOS				
BW	WW	YW	REA	IMF
103	103	98	94	95

ProS	HB	GM	CED	BW	WW	YW	MILK	ME	HPG	CEM	STAY	MARB	REA
80	54	26	14	-2.6	61	95	21	-8	12	6	13	0.52	0.1
80%	71%	68%	25%	33%	45%	53%	86%	15%	28%	79%	83%	25%	49%

37 RAVN LINEBACKER H0169

RAAA# DOB Act. BW Cat. % Dam MPPA Dam DOB
4318493 6-22-20 89 A 100% AR 98 3-26-15

5L DEFENDER 560-30Z
RAVN LINEBACKER C537
RAVN BONNEBELL A325

5L ADVOCATE 817-14W
5L BLACK ADINA 525-560
BADLANDS STATEMENT 70Y
PAULS BONNEBELL 124

Youngest bull in the sale
Thick made Linebacker

5L DEFENDER 560-30Z
RAVN LASS C526
PAULS LASS 917

5L ADVOCATE 817-14W
5L BLACK ADINA 525-560
PAULS CHIEFLINE 5140
PAULS LASS 639

RATIOS				
BW	WW	YW	REA	IMF
103	102	100	100	87

ProS	HB	GM	CED	BW	WW	YW	MILK	ME	HPG	CEM	STAY	MARB	REA
37	12	26	13	-2.2	70	109	20	5	11	3	10	0.52	0.24
99%	99%	69%	39%	41%	16%	21%	90%	72%	49%	97%	96%	25%	21%

38 RAVN RED ROCK H0141

RAAA# DOB Act. BW Cat. % Dam MPPA Dam DOB
4318497 5-31-20 100 A 100% AR 84 4-09-15

C-T RED ROCK 5033
FEDDES RED ROCK A56-E311
FEDDES BLOCKANA Y33 A56

BROWN JYJ REDEMPTION Y1334
C-T VERDI 1030
BECKTON EPIC R397 K
FEDDES BLOCKANA Y33

Bull that will cover some
country

VGW GOOD YEAR 213
RAVN DYNA C562
SIX MILE DYNA 454U

5L DOUBLE DESIGN 1177-227W
VGW 554T-INDIGO 1008
RD TER-RON FULLY LOADED 540R
RED SIX MILE DYNA 699L

RATIOS				
BW	WW	YW	REA	IMF
116	92	95	106	93

ProS	HB	GM	CED	BW	WW	YW	MILK	ME	HPG	CEM	STAY	MARB	REA
89	70	20	9	-0.1	58	94	22	1	11	4	18	0.33	0.17
65%	39%	80%	92%	81%	56%	53%	76%	49%	45%	93%	20%	68%	33%

39 RAVN LINEBACKER H057

RAAA# DOB Act. BW Cat. % Dam MPPA Dam DOB
4318459 4-30-20 94 2 100% AR 107 5-13-14

5L DEFENDER 560-30Z
RAVN LINEBACKER C537
RAVN BONNEBELL A325

5L ADVOCATE 817-14W
5L BLACK ADINA 525-560
BADLANDS STATEMENT 70Y
PAULS BONNEBELL 124

This bull is a category 2
because he has white spot
under his front leg

ANDRAS NEW LOOK 2012
RAVN MS PROSPECTOR B447
PAULS MS PROSPECTOR 962

ANDRAS IN FOCUS B152
ANDRAS MISSY 7031
PAULS CHIEFLINE 5140
PAULS MS. PROSPECTOR 627

RATIOS				
BW	WW	YW	REA	IMF
109	100	97	89	97

ProS	HB	GM	CED	BW	WW	YW	MILK	ME	HPG	CEM	STAY	MARB	REA
60	43	18	11	0	69	108	22	8	12	4	13	0.46	0.04
96%	87%	83%	78%	82%	18%	24%	81%	83%	33%	92%	76%	37%	63%

40 RAVN LEADING EDGE H093

RAAA# DOB Act. BW Cat. % Dam MPPA Dam DOB
4318441 5-13-20 89 A 100% AR 95 10-15-13

5L LEADING EDGE 1221-79A
5L LEADING EDGE 15383-117C
5L RED BIRD 411-15383

BUF CRK THE RIGHT KIND U199
5L BLACKBIRD 5519-1221
5L PURSUIT 3244-127X
5L RED BIRD 1312-411

Dark red
117 IMF ratio

RAVN PREDOMINANT X01
RAVN BLOXY A388
RAVN BLOXY W901

RED PEAK DOT PREDOMINANT 77U
RED SIX MILE ENID 542U
ROY ROGERS 5604
LCC BLOXY NA590

RATIOS				
BW	WW	YW	REA	IMF
103	92	93	101	117

ProS	HB	GM	CED	BW	WW	YW	MILK	ME	HPG	CEM	STAY	MARB	REA
100	65	35	14	-2.5	49	76	28	-6	10	8	14	0.47	0.13
47%	49%	48%	35%	36%	84%	86%	22%	17%	67%	32%	67%	35%	42%

41 RAVN LINEBACKER H0133

RAAA# DOB Act. BW Cat. % Dam MPPA Dam DOB
4318387 5-26-20 91 A 100% AR 95 3-28-11

5L DEFENDER 560-30Z
RAVN LINEBACKER C537
RAVN BONNEBELL A325

5L ADVOCATE 817-14W
5L BLACK ADINA 525-560
BADLANDS STATEMENT 70Y
PAULS BONNEBELL 124

Growth bull

Goes back to Six Mile flush
cow we owned with Hein
Cattle co.

SIX MILE FULL CONTROL 808W
RAVN FLOWER Y112
RED SIX MILE FLOWER 846S

RD TER-RON FULLY LOADED 540R
SIX MILE LASSIE 377P
RED TOWAW INDEED 104H
RED CY FLOWER 344Z

RATIOS				
BW	WW	YW	REA	IMF
107	106	103	93	102

ProS	HB	GM	CED	BW	WW	YW	MILK	ME	HPG	CEM	STAY	MARB	REA
60	37	24	11	-0.7	65	97	18	-5	13	4	11	0.47	0.06
96%	92%	73%	72%	71%	31%	47%	97%	21%	20%	92%	94%	35%	59%

42 RAVN LINEBACKER H0120

RAAA# DOB Act. BW Cat. % Dam MPPA Dam DOB
4318411 5-19-20 89 A 100% AR 97 4-29-12

5L DEFENDER 560-30Z
RAVN LINEBACKER C537
RAVN BONNEBELL A325

5L ADVOCATE 817-14W
5L BLACK ADINA 525-560
BADLANDS STATEMENT 70Y
PAULS BONNEBELL 124

Super fleshing ability

SIX MILE SAKIC 818W
RAVN MISS DUKE Z239
PIE DUKE MISS 081

RED SIX MILE SAKIC 832S
RED SIX MILE SELMA 156T
HXC CONQUEST 4405P
TPIE DUKE MISS 8121

RATIOS				
BW	WW	YW	REA	IMF
103	91	90	95	98

ProS	HB	GM	CED	BW	WW	YW	MILK	ME	HPG	CEM	STAY	MARB	REA
50	38	13	12	-1.2	64	99	19	2	11	3	13	0.38	0.04
99%	91%	90%	58%	62%	33%	42%	95%	49%	53%	97%	80%	55%	63%



43 RAVN LAKOTA RIDGE H042

RAAA#	DOB	Act. BW	Cat.	%	Dam MPPA	Dam DOB
4318363	4-24-20	81	A	100% AR	102	8-24-09

GMRA TRILOGY 0226
RAVN LAKOTA RIDGE D641
RAVN TILLY X014

MESSMER PACKER S008
GMRA LAKOTA 625
BCRR RIDGE 8124U
BCRR 4FTILLY2 793T

Pedigree mixes Bullis Creeks
two great flush cows
Sodak Gem H8058 and LCC
Tilly MB008M

DUNLOUISE RED NATIVE F207
BCRR NATIVE GEM 9162W
SODAK GEM H8058

PRATTLE OF HAYMOUNT
EVERSFIELD RED NENA D252
STRATHE ONWARD 620
SODAK GEM 1034

RATIOS				
BW	WW	YW	REA	IMF
95	99	102	108	90

ProS	HB	GM	CED	BW	WW	YW	MILK	ME	HPG	CEM	STAY	MARB	REA
133	83	50	14	-3.1	48	80	24	-2	15	9	16	0.47	0.21
8%	16%	18%	28%	25%	86%	81%	57%	31%	7%	14%	41%	35%	26%

44 RAVN LINEBACKER H0124

RAAA#	DOB	Act. BW	Cat.	%	Dam MPPA	Dam DOB
4318351	5-23-20	90	A	100% AR	101	3-04-09

5L DEFENDER 560-30Z
RAVN LINEBACKER C537
RAVN BONNEBELL A325

5L ADVOCATE 817-14W
5L BLACK ADINA 525-560
BADLANDS STATEMENT 70Y
PAULS BONNEBELL 124

Tenth calf out of a nice New
Chapter cow

LCC NEW CHAPTER A705L
PAULS CHEROK 971
BJR CHEROK 101

BFCK CHEROKEE CNYN 4912
MISS LL ROB LOW 929
BJR KING OF KINGS 942
BRYLOR BJR CHEROK 63J

RATIOS				
BW	WW	YW	REA	IMF
106	99	96	90	96

ProS	HB	GM	CED	BW	WW	YW	MILK	ME	HPG	CEM	STAY	MARB	REA
60	44	16	11	-0.5	68	104	24	8	15	4	14	0.46	0.08
96%	86%	86%	74%	75%	21%	32%	61%	83%	8%	96%	71%	37%	54%

45 RAVN WIX H0139

RAAA#	DOB	Act. BW	Cat.	%	Dam MPPA	Dam DOB
4318403	5-30-20	81	2	100% AR	104	3-19-11

5L LEADING EDGE 15383-117C
RAVN MR WIX E792
PAULS MISS WIX 563

5L LEADING EDGE 1221-79A
5L RED BIRD 411-15383
CONNELLY FRONTLINE
MISS WIX 8011 OF MC CUMBER

Black red gene carrier
104 MPPA on eight calves
137 ratio on IMF

SIX MILE FULL CONTROL 808W
PAULS DIPPITY DO 139
PAULS DIPPITY DO 784

RD TER-RON FULLY LOADED 540R
SIX MILE LASSIE 377P
LCC NEW CHAPTER A705L
PAULS DIPPITY DO 3038

RATIOS				
BW	WW	YW	REA	IMF
95	100	108	110	137

ProS	HB	GM	CED	BW	WW	YW	MILK	ME	HPG	CEM	STAY	MARB	REA
98	59	39	14	-3.1	58	91	27	-3	11	8	14	0.48	0.22
50%	61%	39%	27%	25%	56%	61%	32%	26%	54%	22%	71%	33%	24%



46 RAVN WIX H0156

RAAA#	DOB	Act. BW	Cat.	%	Dam MPPA	Dam DOB
4318525	06-07-2020	90	2	100% AR	94	03-24-2016

5L LEADING EDGE 15383-117C
RAVN MR WIX E792
PAULS MISS WIX 563

5L LEADING EDGE 1221-79A
5L RED BIRD 411-15383
CONNELLY FRONTLINE
MISS WIX 8011 OF MC CUMBER

Black red gene carrier

SIX MILE GAME PLAN 764A
RAVN VERNICE D6005
RED WJ VERNICE 368X

VGW GAME PLAN 816
RED U6 MINOLA 49X
RED SSS OLY 22U
RED CROWFOOT VERNICE 6940S

RATIOS				
BW	WW	YW	REA	IMF
106	95	98	90	93

ProS	HB	GM	CED	BW	WW	YW	MILK	ME	HPG	CEM	STAY	MARB	REA
86	51	35	14	-1.3	56	89	21	-7	10	7	13	0.42	0
71%	75%	48%	36%	59%	65%	65%	84%	17%	72%	57%	81%	45%	72%

47 H0119

RAAA#	DOB	Act. BW	Cat.	%	Dam MPPA	Dam DOB
	5-19-20	70				

UNIDENTIFIED REGISTERED SIRE

Commercial heifer bull

Unidentified registered sire

BROWN PURSUIT A7670
RAVN ANNABELLE E7104
RAVN ANNABELLE Z228

48 H020

RAAA#	DOB	Act. BW	Cat.	%	Dam MPPA	Dam DOB
	4-08-20	69				

UNIDENTIFIED REGISTERED SIRE

Commercial heifer bull

Unidentified registered sire

MLK CRK ADVOCATE 4324
RAVN LASS F8108
PAULS LASS 917

Elle's HS graduation with
Grandma and Grandpa



PROUD SUPPORTERS OF RAVENSCROFT RED ANGUS



- VITALIX TUBS
- MINERALS
- HOSKINS WATERERS
- SIOUX STEEL PRODUCTS
- GALLAGHER FENCING SUPPLIES
- SPEEDRITE ELECTRIC FENCING SUPPLIES
- TACK
- CUSTOM SADDLES
- CLASSIC ROPES
- ADM FEED
- BOG BOOTS
- CUSTOM FEED MIXES
- LIQUID FEEDS
- STALL FEEDERS
- APACHE PALCO
- ZOETIS
- LIVESTOCK EQUIPMENT
- AND SO MUCH MORE!

ONE STOP SHOP FOR ALL YOUR RANCHING AND LIVESTOCK NEEDS

402-925-5105

JACQUE & LACEY ANSON

416 S SANDY LANE
ATKINSON, NE 68713

"MAKING FEED GREAT AGAIN"

HERD SIRES

RAVN LINEBACKER C537

RAAA#: 3486945 DOB: 3/28/15

5L ADVOCATE 817-14W
5L DEFENDER 560-30Z
 5L BLACK ADINA 525-560

BADLANDS STATEMENT 70Y
RAVN BONNEBELL A325

PAULS BONNEBELL 124

RAVN Linebacker is an easy fleshing moderate meat wagon. He passes muscle and power to his sons. His daughters are soft made with a deep rib to them.

Semen available from Beef-360

	ProS	HB	GM	CED	BW	WW	YW	MILK	ME	HPG	CEM	STAY	MARB	REA
EPD	18	-9	27	14	-1.4	82	130	19	10	14	3	6	0.55	0.29
TOP%	99	99	60	38	55	5	6	90	87	21	95	99	24	19



5L LEADING EDGE 15383-117C

RAAA#: 3483291 DOB: 2/10/15

BUF CRK THE RIGHT KIND U199
5L LEADING EDGE 1221-79A
 5L BLACKBIRD 5519-1221

5L PURSUIT 3244-127X
5L RED BIRD 411-15383
 5L RED BIRD 1312-411

5L Leading Edge is a proven calving ease bull with great muscle and shape. His daughters have great udders.

Semen available from Beef-360

	ProS	HB	GM	CED	BW	WW	YW	MILK	ME	HPG	CEM	STAY	MARB	REA
EPD	110	70	40	18	-6.1	57	83	31	-8	11	10	14	0.51	0.29
TOP%	30	37	37	6	3	64	79	8	15	61	11	68	30	19



FEDDES RED ROCK A56-E311

RAAA#: 3737479 DOB: 3/2/17

BROWN JYJ REDEMPTION Y1334
C-T RED ROCK 5033
 C-T VERDI 1030

BECKTON EPIC R397 K
FEDDES BLOCKANA Y33 A56
 FEDDES BLOCKANA Y33

Feddes Red Rock is a well-balanced bull with calving ease and growth

	ProS	HB	GM	CED	BW	WW	YW	MILK	ME	HPG	CEM	STAY	MARB	REA
EPD	132	70	62	12	-3	62	109	29	9	13	6	18	0.61	0.25
TOP%	10	36	11	59	28	47	29	19	83	32	74	17	17	24



RAVN LAKOTA RIDGE D641

RAAA#: 3565457 DOB: 4/28/16

MESSMER PACKER S008
GMRA TRILOGY 0226
 GMRA LAKOTA 625

BCRR RIDGE 8124U
RAVN TILLY X014
 BCRR 4F TILLY 2793T

RAVN Lakota Ridge is out of our Tilly x014 cow she's a super easy fleshing cow on Sandhills range.

	ProS	HB	GM	CED	BW	WW	YW	MILK	ME	HPG	CEM	STAY	MARB	REA
EPD	158	89	70	16	-5	57	90	26	1	16	11	16	0.8	0.22
TOP%	3	11	6	13	8	66	66	40	44	8	5	40	4	27



RAVN MR WIX E792

RAAA#: 3801332 DOB: 5/16/17

5L LEADING EDGE 1221-79A
 5L LEADING EDGE 15383-117C
 5L RED BIRD 411-15383

CONNEALY FRONTLINE
 PAULS MISS WIX 563
 MISS WIX 8011 OF MC CUMBER

RAVN Mr Wix a black red gene carrier that comes out of the wix cow line. The wix cows we have are some of our favorites. Crossed with Leading Edge he is a cow maker.

	ProS	HB	GM	CED	BW	WW	YW	MILK	ME	HPG	CEM	STAY	MARB	REA
EPD	85	44	41	16	-2.4	65	98	26	1	8	9	12	0.45	0.34
TOP%	65	80	36	18	38	36	50	44	44	90	19	84	40	15



HXC 3350A

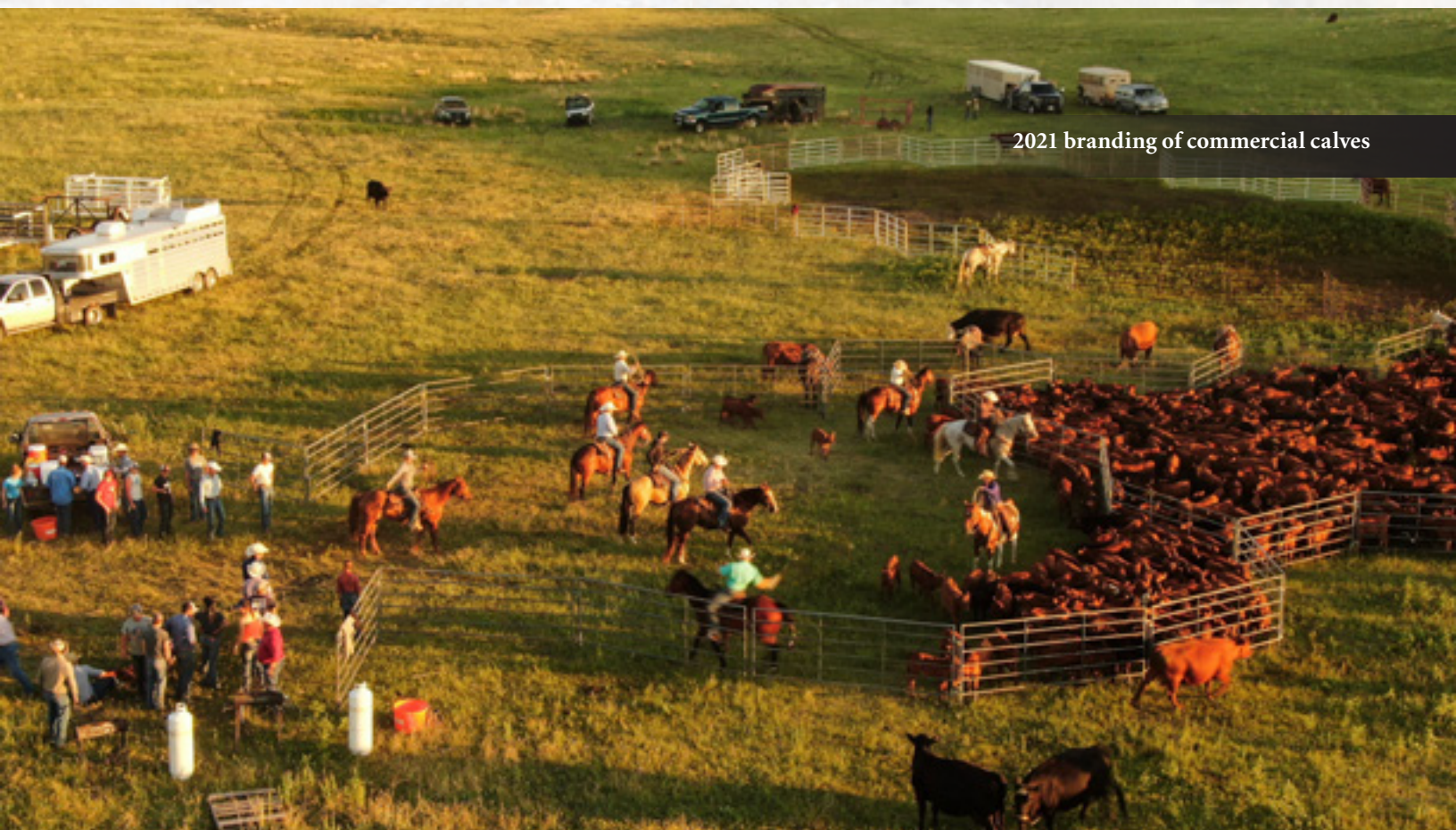
RAAA#: 1625206 DOB: 2/16/13

TE MANIA ADA A149
 PARINGA IRON ORE E27
 STORTH OAKS LOWAN C1(TW)

LCC ABOVE & BEYOND 1300J
 HXC 426P
 HXC QUEEN MA650

HXC 3350A a proven calving ease bull with good length to his calves.

	ProS	HB	GM	CED	BW	WW	YW	MILK	ME	HPG	CEM	STAY	MARB	REA
EPD	126	79	47	21	-6.2	41	72	20	-3	10	13	17	0.59	0.03
TOP%	15	23	26	1	3	96	91	83	30	71	1	30	19	61



2021 branding of commercial calves

In Memoriam

JAMES "COWBOY" SEXSON

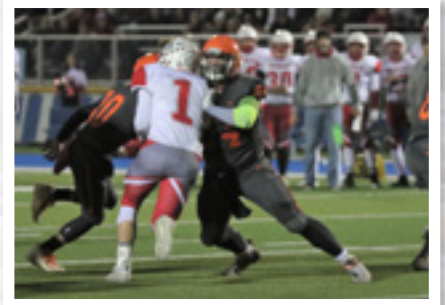


2009 - 2021

Young outdoorsman, athlete and cowboy

CONGRATS CODY-KILGORE

NEBRASKA SIX-MAN FOOTBALL STATE CHAMPS



Tucker #24

PROGRESSIVE CATTLEMEN

RELY ON VITAFERM® CONCEPT•AID®

**DON'T FORGET ABOUT
THE OTHER HALF OF THE EQUATION**

Our VitaFerm Concept•Aid line is built to benefit more than just your cowherd.
Let our products help you get the most out of your bull battery as well.

*Congratulations
to senior, Tucker!*



For more information, contact **John Tucker** at (308) 530-5765
or visit www.vitaferm.com to find a dealer near you.

VITAFERM PERFORMANCE THAT PAYS

BIOZYME
INCORPORATED



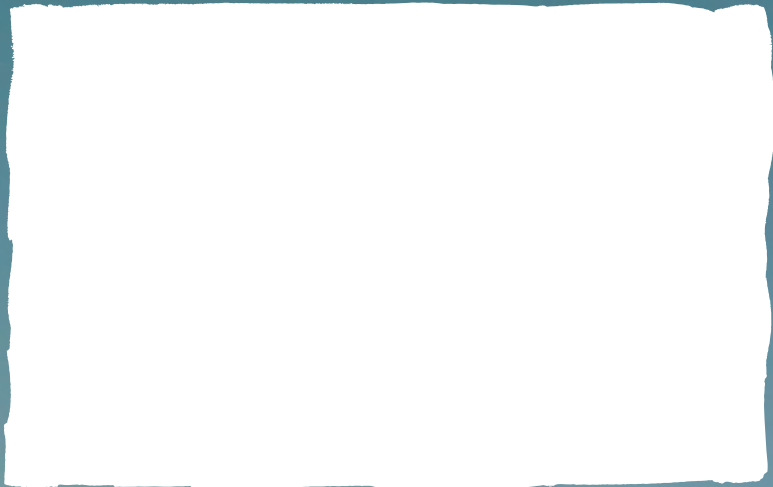
Sandhills Engraving

Contact Tell or Emily today for your custom Ritchey ear tag needs!

We strive to provide friendly and quick services with professional engraving on your cattle tags.

Tell Stoner: 402.389.0381

Emily Hollowpeter: 402.322.0088



Ravenscroft Red Angus
ANNUAL PRODUCTION SALE

2.26.22 | 2 PM Central | Valentine, NE

