

**VISION -TO BUILD A STRONG FUTURE**



**ENIGMA TUL<sup>®</sup>**

**THE MARK OF BEST POWER TOOLS**

*Complete Automotive Range of Automobiles Service Station Equipments for Hi-Tech Workshops*



[www.enigmatul.com](http://www.enigmatul.com)



**ENIGMA TUL**, has been incorporated in the year 2012 with an objective of Design, Development, and Manufacturing of various Engineering Equipment, Specially Garage Equipment's and various kind of Hydraulic & Pneumatic Equipment's.

These are big words for a company that's yet small. But the world has proven time and again it's not size alone that matters. Those who seize an idea ahead of others will rapidly resize themselves and the rest.

### Quality Assurance

Four primary quality principals of Enigma-Tul is "Unremitting pursuit of zero-defect", "Product standardization", "On-time delivery" and "Market internationalization" Products made and sold by Enigma Tul as well as services provided by the company shall meet the expectations of customers through constant technology improvement and conform to the international standards.

"We have always known that we are manufacturing quality products by using sophisticate expert manufacturing know-how and being insistent in attaining every requirement of high quality."

### Customer Care

The meticulous customer service system of Enigma Tul three core businesses solves various problems in professional vibratory processing and also provides a complete quality guarantee to customers.

### Vertical Development

Facing a great global market competition, the company must set up a firm foundation before gaining the success. Enigma Tul is following a vertical development strategy to increase productivity, reduce production cost, and increase price competitiveness and market share by developing new production lines and manufacturing equipment and technology.

### Continuous Development

The popularization of the internet and smooth communication has opened a wide range of business opportunities. Maintaining a competitive advantage will be a main issue for every company to manage and that also makes Enigma Tul unique and carries the company forward as the world around it changes. Enigma Tul is continuing to invest in innovative manufacturing procedures and technologies as well as the new product research and development. The management team understands that these new technology and product development will be leading the markets in the very near future.

### Employee and Customer Recognition

The success of Enigma Tul comes from the great efforts of employees within the organization and the tremendous supports of customers. The company expects to continue to better reward this professionalism of employees by providing incentive programs, international travel opportunities and better growth in the future. And for rewarding all the royal customers, Enigma Tul plans to continue its dedication to high quality products, competitive price, punctual delivery and expert service. The company will constantly strive to be the best working partner and employer.



# Our Product Range



## 3 Drawers Tools Trolley

- Robust Structure made of MS Sheet & MS pipe. S.S Tray on Top.
- The robust counter-top on the tool trolley will be a great spot to keep frequently-used tools within reach.
- All the drawers can be locked at once, which prevents them from opening accidentally when the trolley is moved around.
- Three sliding drawers to store and organize your tools.
- There is also a convenient side handle for pushing the trolley.
- Durable construction with 4 swivel castors (2 of them with brakes)
- Paint Powder Coated.
- Tool Inserts are provided with the fully loaded trolley with tools.



## 4 Drawers Tools Trolley

- Robust Structure made of MS Sheet & MS pipe.
- The robust counter-top on the tool trolley will be a great spot to keep frequently-used tools within reach.
- All the drawers can be locked at once, which prevents them from opening accidentally when the trolley is moved around.
- Four sliding drawers to store and organize your tools.
- There is also a convenient side handle for pushing the trolley.
- Durable construction with 4 swivel castors (2 of them with brakes)
- Paint Powder Coated.
- Tool Inserts are provided with the fully loaded trolley with tools.

## 5 Drawers Tools Trolley

- Robust Structure made of MS Sheet & MS pipe.
- The robust counter-top on the tool trolley will be a great spot to keep frequently-used tools within reach.
- All the drawers can be locked at once, which prevents them from opening accidentally when the trolley is moved around.
- Five sliding drawers to store and organize your tools.
- There is also a convenient side handle for pushing the trolley.
- Durable construction with 4 swivel castors (2 of them with brakes)
- Paint Powder Coated.
- Tool Inserts are provided with the fully loaded trolley with tools.



## Cabinet Type Tools Trolley

- Robust Structure made of MS Sheet & MS pipe.
- Stainless Steel Tray on Top.
- The robust counter-top on the tool trolley will be a great spot to keep frequently-used tools within reach.
- Racks are specially designed to store and organize your tools.
- Durable construction with 4 swivel castors (2 of them with brakes)
- Lock-able Flap door, which prevents them from opening accidentally when the trolley is moved around in workshop.
- Paint Powder Coated.



## Parts/ Material Handling Trolley

Mild steel construction makes this three shelf workshop tool trolley durable enough for moving tools and car parts. Easily handles loads up to 80kg. Solid rubber castors let you manoeuvre the workshop trolley without marring the floor. Deep shelves give you plenty of storage for your tools and parts. This is the perfect heavy duty workshop trolley for garages, warehouses and workshops.

### **Features**

- Three 100mm deep shelves for plenty of storage
- Non slip rubber tool tray liners
- Two swivel and two fixed 100mm smooth rolling composite rubber castors
- Tubular steel handle
- Overall Dimensions: 845(L) x 410(W) x 780(H)mm

## Parts/ Material Handling Trolley with Detachable S.S Tray

Mild steel construction makes this two detachable S.S tray shelf workshop trolley durable enough for moving tools and car parts. Solid rubber castors let you manoeuvre the workshop trolley without marring the floor. This is the perfect heavy duty workshop trolley for garages and workshops.

### **Features**

- 2 Detachable S.S tray with fixed S.S top Tray.
- Two swivel and two fixed 100mm smooth rolling composite rubber castors.
- Overall Dimensions: 800(L) x 500 (W) x 1030 (H)mm



## S.S Top Work Bench with Tool Board

- Heavy Duty Working Table with tools Drawer.
- Powder coating to resist scratch and solvent markings
- Four sliding drawers to store and organize tools your tools.
- Central Locking mechanism for keeping tools & other belongings safe.
- Tool board for hanging tools and other accessories like gas kit etc.
- Static loading of 1000 kg
- Sturdy structure design
- High quality S.S work-top
- Tools inert are provided with Tools
- Paint powder coated.



## Work Bench with Special Service Tool Board & Rack

- Heavy Duty Working Table with Drawer and Storage Cabinet
- Organized modular combination
- Powder coating to resist scratch and solvent markings
- Static loading of 500 kg
- Tool board for hanging spl. tools
- Drawers Lock mechanism for keeping tools & other belongings safe.
- Sturdy structure design
- High quality rubber work-top
- Bench Vice & bench Grinder installed.

## Heavy Duty Work Bench with Height Adjustable Mechanism

- Heavy Duty Working Table with Drawer and Wall Storage Cabinet
- Cold rolled steel plate
- Organized modular combination
- Powder coating to resist scratch and solvent markings
- Static loading of 1000 kg
- Sturdy structure design
- Height of the table is adjustable
- High quality PVC work-top

### **Technical Data**

- Dimension for Working Table : W1565 x D766 x H800mm
- Dimension for 3 Drawer add-on chest :W667 x D313 x H270mm
- Dimension for 5 Drawer Trolley W569 x D340 x H769mm
- Dimension for Wall Storage Cabinet W1565 x D203 x H603mm



## Heavy Duty Work Bench with Bench Vice

- Robust Structure made of MS Sheet & MS pipe.
- Top Surface covered with High Quality Rubber mat.
- Suitable for all kind of bench vice work.
- Two persons simultaneous work on this work bench with different job.
- Paint Powder Coated.



## Work Bench with Bench Vice

- Robust Structure made of MS Sheet & MS pipe.
- Top surface covered with high quality rubber sheet.
- Bench vice installed right side for cutting & dismantling small parts.
- Bottom rack is used for placing big dismantled parts or other accessories.
- Two sliding drawers to store and organize tools your tools.
- Rubber boot are provided in all legs of work bench.
- Aluminum Chanel are provided on the top & bottom edge surface of the work bench.
- Paint Powder Coated.

## Work Bench

- Robust Structure made of MS Sheet & MS pipe.
- Top Surface covered with High Quality Rubber mat.
- Suitable for all kind of work.
- Two drawers for keeping tools & other disposable items.
- Paint Powder Coated.



## Mechanic Stool

- Robust Structure made of MS Sheet.
- Lenient seat covered with rexine material.
- Spl. design drawers for keeping tools.
- Bottom tray with 100 mm depth for keeping serviceable items.
- Paint Powder Coated.

## Parts Washer

- For cleaning the dismantled parts before assembly thru high pressure multi nozzles.
- Kerosene / Diesel used for parts cleaning .
- Multi jet system for spray & brush with built - in line for optimum cleaning.
- Multiple parts or normal size parts can easily wash in it.
- Kerosene / Diesel is recycled through special filtration system.



## Vehicle Washer (Heavy Duty)

Used in various industrial and commercial sector, these products are easy to install and offer reliable performance. These machines are simple to maintain, high in performance, and ensure efficient cleaning of cars.

### Specification:

- No. of Plungers : 1
- Working Pressure :25 Kgf/cm<sup>2</sup>
- Displacement : 22 Lpm
- Number of Guns : 1
- Discharge per Gun : 13 Lpm
- Speed ( rpm ) : 280
- Motor : 3 HP, 3ΦPhase
- Motor Speed (rpm) : 1440
- Tank Capacity (Ltr) : 300

## Vehicle Washer

Used in various industrial and commercial sector, these products are easy to install and offer reliable performance. These machines are simple to maintain, high in performance, and ensure efficient cleaning of cars.

### Specification:

- No. of Plungers : 1
- Working Pressure :25 Kgf/cm<sup>2</sup>
- Displacement : 22 Lpm
- Number of Guns : 1
- Discharge per Gun : 13 Lpm
- Speed ( rpm ) : 280
- Motor : 2 HP, 1ΦPhase
- Motor Speed (rpm) : 1440
- Tank Capacity (Ltr) : 300





## Hydraulic Floor Jack 3 Ton

- Ideal for car, truck repair and tire change and garage use.
- Bypass device protects against over-pumping for safer operation.
- Built-in safety valve provides overload protection.
- Heavy-duty steel construction provides long term durability.
- Large steel caster and swivel casters for easy maneuverability.
- Light weight for easy mobility and transport.
- All welded steel frame construction with cast iron support arms with rust resistant finish for long tool life.



## Hydraulic Floor Jack 5 Ton

- Hydraulic floor jack is ideal for lifting heavy trucks, buses, agriculture and construction equipment.
- Long frame extends past the overhang of commercial vehicles; Foot pedal control provides quick set-up and rise
- Features a 5 ton (10,000 lb) capacity and a lift range between 5-15/16" to 22"; Wide stance provides added stability under load
- Equipped with (2) large steel casters and (2) 360-degree swivel casters for smooth maneuverability.

## Air Operated Hydraulic Lifting Jack 25 Ton

360 degree revolving type structure provided with 4 vertical platforms on each wall. The wall is made of perforated sheet with the provision of mounting detachable hooks. This complete structure is supported on a vertical tube with thrust bearing at the base, which gives 360 degree revolving movement to the vertical. Each platform can accommodate approximately 20-30 tools (Tool count may defer with sizes) and therefore one entire tool board can accommodate around 325-350 tools. The detachable hook & plastic bins are provided for mounting the special tools on the platforms.

### Specification:

- Minimum Height (mm) : 180
- Weight (kg) : 60
- Frame Length (mm) : 770
- Handle Length (mm) : 1160
- Width (mm) : 160
- Capacity (kg) First Stage : 25,000
- Capacity (kg) Second Stage : 10,000
- Max Height (mm) First Stage : 275
- Max Height (mm) Second Stage : 380
- Width with Wheels (mm) : 305
- Air Supply : 9 – 12 Bar
- Air Consumption (l/min) : 350



## Tractor Dismantling Rail Jack

- Supports weight of 3000kgs per jack stand
- Used at the time of engine overhauling
- Rail Length: 3 Metres
- Safety locking mechanism on each jack



## Engine / Gear Box Trolley

This 500kg Engine/Gear Box Trolley is suitable for raising heavy loads by the use of hydraulics. Lifter Trolleys are the safe and versatile way to transport Engine/ Gear Box inside the working Area.

- Assist in removal and installation of engine and gear box.
- Capacity : 0.5 Ton
- To carry engine/gear box from one place to another.
- Manually Hydraulic operated with four castor wheels for ease in movement.
- Precisely engineered
- Compact design

## Hand Pallet Truck

Hydraulic hand Pallet Truck / Jacks are the used to move heavy or light pallets within a warehouse moving ranges from 2 Ton to 5 Ton. We have Different models available according to the customer requirement.

- Hand Pallet Truck – 2 Ton
- Technical Specification :
- Load Capacity – 2000Kg
- Width – 550mm
- Fork Length – 1150mm
- Max Lifting Height – 200mm
- Min Lifting Height – 75mm
- Steering Wheel Diameter – 180 x 50mm
- Hydraulic system – DF
- Wheels – Nylon
- Weight – 55kg



## Hydraulic Press

Ideal for pressing, bending and extruding. Built for tough daily use in industrial and automotive workshops. Manufactured welded steel frame with two end braces for stability and a fully adjustable work bed providing flexibility and convenience. Fitted with a attachable manual hydraulic power pack.

### Features

- Capacity: 5/10 /20 Tonne.
- Ram stroke: 150mm.
- Extension screw: 60mm.
- Max height of ram to table: 300mm.
- Min height of ram to table: 90mm
- Table aperture: 140mm.
- Working table width: 360mm.
- Overall height: 895mm.
- Hydraulic gauge included: Yes

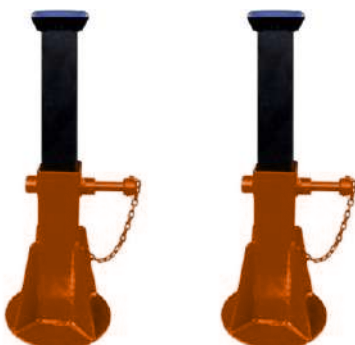


## Hydraulic Zip Crane with Manual Pump

- Lift, lower and transport heavy items with minimal effort.
- Recommended for motors, compressors and transmissions.
- Used by mechanics, machine operators and for loads.
- Raise and lower the lever to raise your arm. Extends for greater range.
- Heavy duty chains for holding parts.
- Capacity 0.5- 2 Ton.
- Operated by Manual Hyd. Power Pack
- 4 swivel castors for smooth movement

## Tripod Stand

- Portable and easy to use.
- Heavy duty iron ensures its durable use.
- Provides maximum support and stability for changing tyres.
- Suitable for car & Light Commercial Vehicle.
- Capacity 3-4 Ton



## Tripod Stand (Heavy Duty)

- Portable and easy to use.
- Heavy duty iron ensures its durable use.
- Provides maximum support and stability for changing tyres.
- Suitable for car & Light Commercial Vehicle.
- Capacity 6-8 Ton

## Digital Oil Dispenser with 50 Ltrs. on Wheel

- Electronic Pre - set mode facility with totalizer.
- Dispense up to 30 Ltrs. per minute thru 50Ltrs. tank. Tank mounted on trolley.
- Auto shut-off function.
- Suitable for dispensing engine, gear, hydraulic oil, automatic transmission fluid & anti boil, upto maximum viscosity of SAE 140.
- Equipped with non dripping gun.



## Waste Oil Disposer Trolley (Folding Type)

- Oil Disposer (Folding Type) Tank is easy to empty by using compressed air. Drain pan adjustable for height and can be folded down onto floor (with swivel wheel for manoeuvring)
- Caster wheels for easy movement. Easy emptying of the tank using compressed air (Max1.5 Bars)
- NOTE : Oil should be warm while removal
- Tank Capacity : 50 Ltrs.

## Waste Oil Disposer Trolley with Manual Pump

- Portable Waste Oil Collection & Transfer Trolley to collect the waste oil from sump & transferred.
- Waste oil Disposer tank with manual Pump.
- Tank capacity - 30-40 Ltrs..
- Caster wheels for easy movement on shop floor.



## Portable Flat Waste Oil Disposer Trolley Type with Manual Pump

- This Portable Oil Drain Tank with Pump 80-90 ltrs. for Tractor is ideal for draining oil or anti-freeze oil and other fluids. It is made from high-impact polypropylene, which prevents the drain from rust & corrosion, dent and lightweight at the same time. It comes with T-handle folds down for easy storage. Feature with four heavy-duty 4" swivel casters for easy manoeuverability. It is great for low-profile applications such as trucks, SUVs, and a handful of other equipment.



## Pneumatic Grease Pump 50 Kg

- Fitted with Strainer at Suction Tube Inlet for Clean Grease to the Bearing.
- Supplied Complete with Drum Cover, Rubber Lined Follower Plate.
- 84 inch of High Pressure Grease Hose, Z Swivel and Professional Grease Control Valve.
- Portable Version Available with Built-in Steel Drum, Complete with Wheels and Pull Handle.
- Used for greasing different parts of the vehicle.
- Capacity 15-50 kg.
- Pump dispenses grease at pressures up-to 50 times the Air inlet pressure



## Hand Operated Grease Gun

- It Develops up-to 7500 psi and Delivers upto 1.10 kg/minute of grease
- Pump dispenses grease at pressures upto 50 times the air inlet pressure
- Air inlet / outlet connection - 1/4" BSP (F), Working pressure 2-10 Bar (30-150psi)
- Portable with wheels and pull handle and built-in steel drum
- Recommended use with Light & self collapsing grease upto NLGI 2

## Foot Operated Grease Pump

- Utilized for greasing different parts of the vehicle.
- Capacity 5-10 kg
- Foot operated with multi shoot in single operation.
- Pumps up to 2 grams per stroke
- Hands-free operation with foot lever that greatly reduces effort and enables easy high-pressure greasing
- Can be operated by hand when under low machine

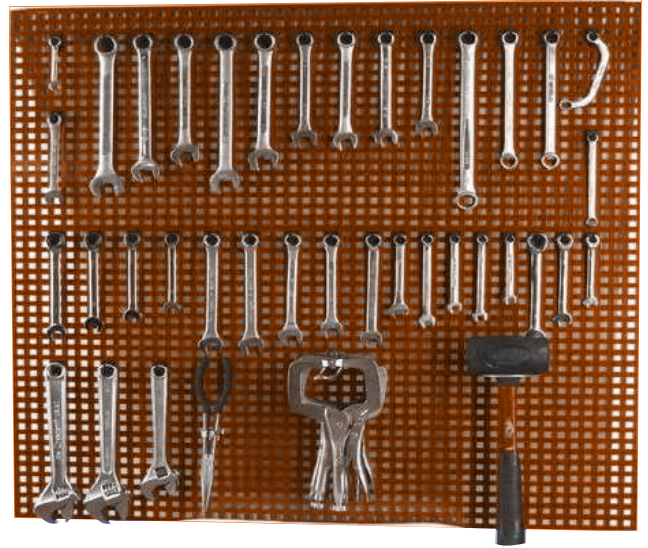


## Hand Operated Grease Gun

- The grease gun holder is adopted quality material, sturdy and durable to use.
- This Portable pneumatic grease gun has compact size, easy to carry for outdoor use.
- The pneumatic grease gun can pump out the grease and inject clean grease into some very tight spaces.

## Special Service Tools Board

Perfect for storing your tools safely and efficiently. Perforated panels offer easy access to your whole collection as well as a clear visual reference to help you keep your inventory together and identify missing tools on Tool Board. These are available with wide range of accessories to store different types of tools on tool board.  
 Size : 1200 X 700 X 50 mm  
 No. of Hook : 40 pcs.



## Special Service Tools Board Shutter Type

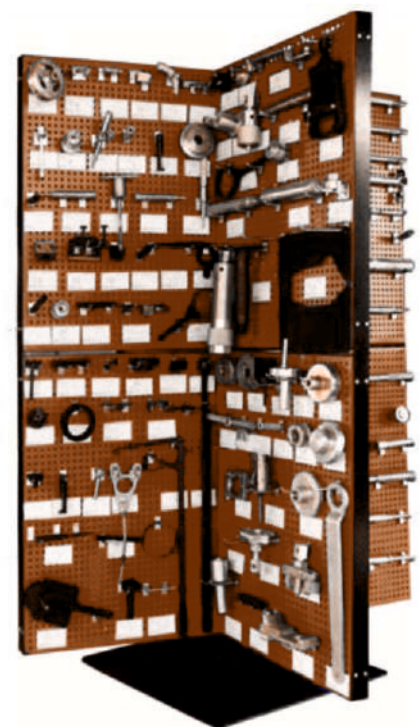
The cabinet housing is manufactured from perforated steel with a lockable impact resistant plastic roller door.

## 360 Degree Revolving Type Special Service Tools Board

360 degree revolving type structure provided with 4 vertical platforms on each wall. The wall is made of perforated sheet with the provision of mounting detachable hooks. This complete structure is supported on a vertical tube with thrust bearing at the base, which gives 360 degree revolving movement to the vertical. Each platform can accommodate approximately 20-30 tools (Tool count may defer with sizes) and therefore one entire tool board can accommodate around 325-350 tools. The detachable hook & plastic bins are provided for mounting the special tools on the platforms.

### Hook Size

- 2 inch
- 4 inch
- 6 inch



## Pneumatic Hanger Wall Mounted/ Roof Mounted

- Structure made of M.S frame.
- Inbuilt 2 nos. pneumatic hose reel for nut runner & air blow gun.
- Inbuilt FRL for removing moisture & set the Air pressure.
- 5 to 10 meters pneumatic hose reel used as per requirements.
- Paint Powder Coating.

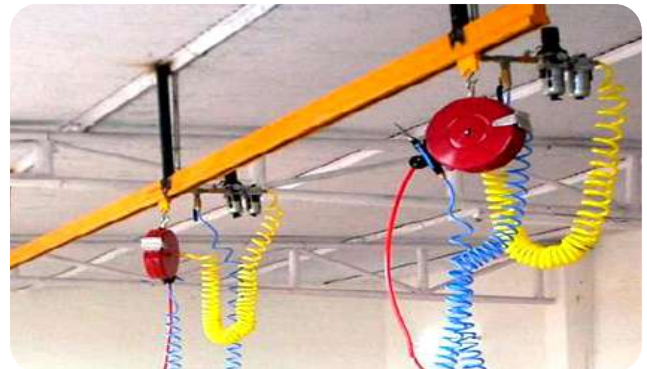


## Pneumatic Hanger Swirl Type 180 Degree Movable

- Structure made of M.S frame.
- Inbuilt pneumatic line for nut runner & air blow gun.
- Inbuilt FRL for removing moisture & set the Air pressure.
- Horizontal 180degree rotation.
- Pneumatic coil hose 5 to 10 meters used as per customers requirement.
- Paint powder coating.

## Pneumatic Hanger with Sliding Rail System

Gives modernized looks with advance technology hassle free installation with proper utilization of space, leak & moisture free system with sliding hose pipe for quick service at bays. This pneumatic hanger can configured/ install wall or roof both.



## 1/2 " Pneumatic Tools & its Accessories



1/2" Drive  
Pneumatic Nut Runner



Deep Impact  
Socket Set



PU Coil Hose



1/2" FRL Unit



Spring Balancer



Hand Gloves



Air Blow Gun



Pnu. Hose Reel

## Digital Tyre Pressure Gauge Hand Operated

- Tyre Gauges Charge and Test Car Tire Pressure Gauge Pneumatic Gun Tyre Pressure Gun Tyre Pressure Gauge.
- Manual Operated.
- Dial shown the reading during inflation



## Digital Tyre Pressure Gauge Wall Mounted

- Designed for petrol pumps and service centres
- Easy to read digital display.
- Long lasting LED light for night use.
- Powerful & Compact.
- Easy to Install.

## Digital Tyre Inflator/ Deflator

- Application : Tyre Inflating
- Voltage : 220V
- Display Type : Digital
- Driven Type : Electric
- Pressure : 0-150PSI
- Max Pressure: 10Bar

### Technical Specifications :

- Designed for petrol pumps and service centres
- Extremely rugged and reliable design
- Large backlit 1" Dual LED Display
- Soft touch membrane keypad
- Automatic Tyre detection
- Automatic filling speed adjustment using intelligent software ensures fast inflation
- Safe with self diagnostics and always confirms a high set point to avoid wrong set point entry



## Air Compressor (2HP)

- Two staged air cooled industrial air compressor to operate pneu. tools , pneu. lift and compressed air for cleaning purpose .
- The air compressor equipped with unique safety feature of auto-cut system which saves the power also, suction air filter, electric motor ,safety valve , belt.
- Efficient cooling system with deep finned cylinders and inter stage/after stage cooler.
- Sealed safety valves for operational safety
- No of Cylinders 2
- 1Phase/3 Phase, 2HP, 160 Liters Tank Capacity.



## Air Compressor (3HP)

- Two staged air cooled industrial air compressor to operate pneu. tools , pneu. lift and compressed air for cleaning purpose .
- The air compressor equipped with unique safety feature of auto-cut system which saves the power also, suction air filter, electric motor ,safety valve , belt.
- Efficient cooling system with deep finned cylinders and inter stage/after stage cooler.
- Sealed safety valves for operational safety
- No of Cylinders 2
- 1 Phase/ 3 Phase, 3 Hp & 220/160 ltrs. tank capacity.



## Air Compressor (5HP)

- Two staged air cooled industrial air compressor to operate pneu. tools , pneu. lift and compressed air for cleaning purpose .
- The air compressor equipped with unique safety feature of auto-cut system which saves the power also, suction air filter, electric motor ,safety valve , belt.
- Efficient cooling system with deep finned cylinders and inter stage/after stage cooler.
- Sealed safety valves for operational safety
- No of Cylinders 3
- 3 Phase, 5 Hp & 220/250 ltrs. tank capacity.



## Air Compressor (10HP)

- Two staged air cooled industrial air compressor to operate pneu. tools , pneu. lift and compressed air for cleaning purpose .
- The air compressor equipped with unique safety feature of auto-cut system which saves the power also, suction air filter, electric motor ,safety valve , belt.
- Efficient cooling system with deep finned cylinders and inter stage/after stage cooler.
- Sealed safety valves for operational safety
- No of Cylinders 3
- 3 Phase, 10 Hp & 300/400 ltrs. tank capacity.



## Multi Channel Heavy Duty Battery Charger

Digital Battery Charger, provided by us, can Charge 6 nos. batteries (Selectable) at a time. Our Digital Battery Charger has heavy duty selector switches for current and voltage selection. Digital Battery Charger, provided by us, comes with Indicator Portable Type Table top Model. Apart from that, our Digital Battery Charger has accurate Digital DC Ammeter of range 0-20Amps. Not just this, Digital Battery Charger that we offer has Heavy Duty ON/OFF Switch that makes it easy to use.



## Digital Battery Charger

- Fast charge and boost functions
- Suitable for cars, vans, tractors, commercial vehicles and leisure batteries
- Ammeter clearly shows charging rate
- Robust steel cast with carrying handle

## Technical Information

- 12V/24V
- Up to 320Ah
- Input: 230V/50Hz AC
- Battery Capacities: 120-320Ah (12V)
- Metal cased 30A dual voltage battery charger
- Output 12V/24V - 30A effective



## Digital Battery Load Tester

- Hand-held tester checks the battery and charging systems with digital accuracy.
- Bright, three-color, LCD digital display indicates both voltage and test results.
- Unique five-step design indicates OK, OK & Recharge, Recharge Battery, Recharge & Retest, and Bad Cell.
- Error LED indicates reverse hook-up.
- Works with 12V batteries.



## Quick battery Charger & Booster

- Preset timer provided for selecting Battery Boosting Time
- Digital Ammeter with selector Switch for setting Charging/Boosting Current
- Heavy duty Toggle Switches can Charge up to 200AH battery
- On Line charging and no need to pull battery from Vehicle
- Fully powder coated body Long handle with fine plating
- Boosts and quick starts battery even in Run-Down condition of the vehicle.



**Bosh 142 Pcs. Tool Kit**



**Force 142 Pcs. Tool Kit**



**Stanley 156 Pcs. Tool Kit**



**TopTul 150 Pcs. Tool Kit**



**Garage Lamp**



**Hot Air Blow Gun**



**Twist Drill Set**



**Spring Scale**



**Lever Operated Vacuum Pad**



**Leather Gloves**



**Scraper Set of 4 Pcs.**



**Punch & Chisel Set of 5 Pcs.**



**V-Block**



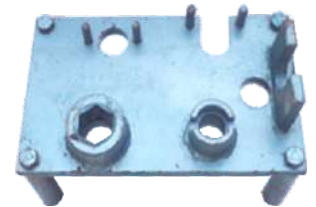
**Drill Machine**



**Tyre Toe-In Gauge**



**Nozzle Holder**



**Magnetic Tray**



**Waste Oil Pan**



**Display Board**



**Notice Board**





**Torque Wrench Set of 3 Nos**



**Torque Wrench with Jaw**



**Piston Ring Expander**



**Piston Ring Compressor**



**Bench Vice**



**Bench Grinder**



**Drum Wrench**



**Siphon Pump**



**Oil Pressure Gauge**



**Hydraulic Pressure Gauge**



**Compression Tester**



**Injector Tester**



**Jumper Cable**



**Oil Can**



**Speed Handle**



**Ball Valve 1/2"**



**Stud Puller**



**Impact Screw Driver Set**



**Quick Release Coupler**



**Universal Joint**





**Vernier Calliper**



**Digital Vernier Calliper**



**Micro Meter**



**Digital Micro Meter**



**Inside Micro Meter**



**Dial Gauge**



**Inside/Outside Calliper**



**Degree Protector**



**Digital Thermometer**



**Clamp Meter**



**Digital Tachometer**



**Multimeter**



**Hydrometer**



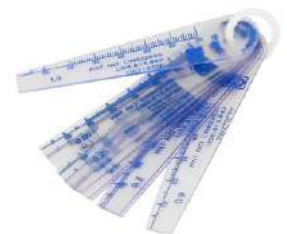
**Thread Gauge**



**Feeler Gauge**



**Plastic Gauge**



**Steel Rule**



**Measuring Tape**



**Straight Edge & Tri Square**



**Depth Gauge**





**Clip Remover**



**Rubber Hammer**



**Ball Pin Hammer**



**Riveting Hammer**



**Hammer 3 Kg**



**File Set of 4 pcs.**



**Combination Plier**



**Circlip Plier Set of 4 pcs.**



**Diagonal Cutter**



**Long Nose Plier**



**Water Pump Plier**



**Adjustable Wrench**



**Pipe Wrench**



**C-Clamp**



**Parts Bin**



**Screw Driver Set**



**Open End Spanner**



**Ring Spanner**



**Combination Spanner**



**Allen Key Set**



## General & Measuring Tools



## General Tool Kit



**Bosh 142 Pcs. Tool Kit**

**Force 142 Pcs. Tool Kit**

**Stanley 156 Pcs. Tool Kit**

**TopTul 150 Pcs. Tool Kit**

## Bodyshop Special Service Tools



**10 Ton Porta Power Hydraulic Jack Body Frame Repair Kit**

**Hammer Body Puller**

**Hammer Dolly Set**

**Tap & Die Set**



**ENIGMA TUL<sup>®</sup>**  
**THE MARK OF BEST POWER TOOLS**

*Complete Automotive Range of Automobiles Service Station Equipments for Hi-Tech Workshops*

**ENIGMATUL PRIVATE LIMITED**

Add: Plot No. 3, Gali No. 3, DC Enclave, Wazirpur Road Faridabad-121002

E-Mail Us At : [info@enigmatul.com](mailto:info@enigmatul.com), Mob.: +91 8130208164, 8130039846

For Support Please Mail /Call Us At : [support@enigmafuture.com](mailto:support@enigmafuture.com) / 8130016515