

VISION -TO BUILD A STRONG FUTURE



ENIGMA TUL[®]

THE MARK OF BEST POWER TOOLS

Complete Automotive Range of Automobiles Service Station Equipments for Hi-Tech Workshops



www.enigmatul.com

ENIGMA TUL, has been incorporated in the year 2012 with an objective of Design, Development, and Manufacturing of various Engineering Equipment, Specially Garage Equipment's and various kind of Hydraulic & Pneumatic Equipment's.

These are big words for a company that's yet small. But the world has proven time and again it's not size alone that matters. Those who seize an idea ahead of others will rapidly resize themselves and the rest.

Quality Assurance

Four primary quality principals of Enigma-Tul is "Unremitting pursuit of zero-defect", "Product standardization", "On-time delivery" and "Market internationalization" Products made and sold by Enigma Tul as well as services provided by the company shall meet the expectations of customers through constant technology improvement and conform to the international standards.

"We have always known that we are manufacturing quality products by using sophisticate expert manufacturing know-how and being insistent in attaining every requirement of high quality."

Customer Care

The meticulous customer service system of Enigma Tul three core businesses solves various problems in professional vibratory processing and also provides a complete quality guarantee to customers.

Vertical Development

Facing a great global market competition, the company must set up a firm foundation before gaining the success. Enigma Tul is following a vertical development strategy to increase productivity, reduce production cost, and increase price competitiveness and market share by developing new production lines and manufacturing equipment and technology.

Continuous Development

The popularization of the internet and smooth communication has opened a wide range of business opportunities. Maintaining a competitive advantage will be a main issue for every company to manage and that also makes Enigma Tul unique and carries the company forward as the world around it changes. Enigma Tul is continuing to invest in innovative manufacturing procedures and technologies as well as the new product research and development. The management team understands that these new technology and product development will be leading the markets in the very near future.

Employee and Customer Recognition

The success of Enigma Tul comes from the great efforts of employees within the organization and the tremendous supports of customers. The company expects to continue to better reward this professionalism of employees by providing incentive programs, international travel opportunities and better growth in the future. And for rewarding all the royal customers, Enigma Tul plans to continue its dedication to high quality products, competitive price, punctual delivery and expert service. The company will constantly strive to be the best working partner and employer.

Hydro-Electric Scissor Lift with Inbuilt Power Unit

This is the next step up in high performance lifts. Along with a 1220 mm maximum raised height and 500 Kg capacity, the features a hand held remote control and a frame mounted pump. Optional side panels, increase the working width of the Hydraulic Lift to 750 mm to 1000 mm, allowing the widest utility vehicles. Front & Rear Panel Drop Provision for Hassle free working on Front & Rear Wheel of Bike.

- Length = 2200 mm
- Width = 750 mm, Extended = 250 mm
- Height = 1220 mm

Specification

Mode of Operation	:	Hydro-Electric
Mounting Type	:	Pit / Floor
Structure	:	Made of CR Pipes
Top Sheet	:	3 mm Thick Top
Paint	:	Powder Coated
Lock	:	Automatic
Power Unit	:	220V AC/Single
Phase	:	
Oil Tank	:	10-12 ltrs. (Hyd. Oil)



Front Wheel Vice



Inbuilt Power Unit



Auto-lock Mechanism



Ramp



Hydro-Electric Scissor Lift with Wheel Stopper

Standard Two Wheeler Bike/ Scooter Service Lift. Hydro-Electrical operation. S.S top sheet for long durability. Three step manual lock provided to achieve working height. These service lift can be installed on floor or pit.

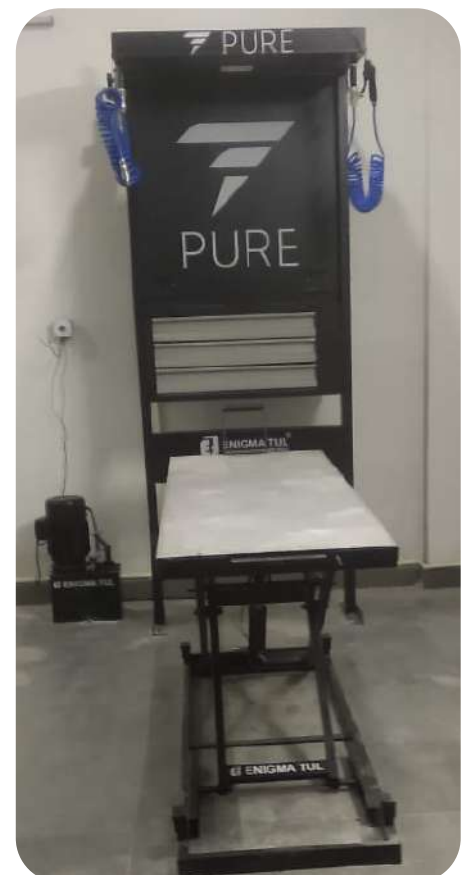
- Length = 1800 mm
- Width = 590 mm
- Height = 915 mm
- Shut Height = 180 mm

Specification

Mode of Operation	:	Hydro-Electric
Mounting Type	:	Pit / Floor
Structure	:	Made of CR Pipes
Top Sheet	:	S.S Top
Paint	:	Powder Coated

Vertical Panel Board with Pneumatic Connection

- Vertical Panel designed to accumulate all the required components at one which technician frequently used in two wheeler service.
- It can reduced the technician fatigue & saves times.
- It can be customized as per OEM requirement.
- Lockable tools drawers.
- Illuminated Top
- OEM Branding provision with Pin up Board.



Engine Table with Technical Diagram & OEM Branding

- This table is specially designed for engine overhauling purpose & other minor work of engine.
- Bins holder & parts tray are provided to keeping small parts/ component of engine.
- Special service tool board is provided to hang frequently used tools.
- Precise tool & spanner are kept in drawers.
- Small can is provided under the engine overhauling trolley to collect the engine oil at the time of engine overhauling.
- Pneumatic line & illuminated top.



Work Bench with Special Service Tools Board

- Structure made of MS pipe & sheet.
- 2 lockable drawers for keeping tools.
- Bottom platform is provided for keeping spare & dismantled parts.
- Special service tools board is provided for hanging special tools which are frequently used for engine assembly/overhauling.
- Top Surface covered with High Quality Rubber mat.
- Bench vice is mounted at one corner of the table.
- Electrical point is provided.
- Paint powder coated.



Work Bench with Bench Vice

- Structure made of MS pipe & sheet.
- Single drawers for keeping general purpose tools.
- Suitable for all kind of bench vice work.
- Top Surface covered with High Quality Rubber mat.
- This table is generally used for hammering purpose.



2 Drawers Tools Trolley with Bottom Cabinet

- Structure made of MS pipe & sheet.
- 2 lockable drawers for keeping tools.
- Telescopic channel are provided.
- Bottom cabinet are provided for keeping spare & other accessories.
- Castor wheels are provided for smooth movement inside the workshop.
- Paint powder coated



3 Drawers Tools Trolley with Bottom Cabinet

- Structure made of MS pipe & sheet.
- 3 lockable drawers for keeping tools.
- Foam sheet is provided in each drawers.
- Telescopic channel are provided.
- Open shelves is provided for keeping dismantled components of vehicle.
- Bottom cabinet are provided for keeping spare & other accessories.
- Castor wheels are provided for smooth movement inside the workshop.
- Paint powder coated

5 Drawers Tools Trolley

- Structure made of MS pipe & sheet.
- 5 lockable drawers for keeping tools.
- Foam sheet is provided in each drawers.
- Telescopic channel are provided.
- Castor wheels are provided for smooth movement inside the workshop.
- Paint powder coated



Battery Charging Trolley

- Structure made of MS pipe & sheet.
- Available in Red or Grey powder coated finish
- Dimensions:
- (H)100cm x (D)58cm x (W)46cm
- A sturdy and hard wearing workshop trolley designed to hold and secure the range of charger & tester, enabling mobility of charging anywhere within the workshop area.
- Castor wheels are provided for smooth movement inside the workshop area.



Parts Trolley

- Structure made of MS pipe & sheet.
- 4 inch deep tray is fixed at different level to keep different parts/ spares.
- Castor wheels are provided for smooth movement inside the workshop area.

Scrap Trolley

- Structure made of MS pipe, flat & perforated sheet.
- Used to carry workshop waste items like used filter, empty oil cans , used brake shoe & broken head /tail lights.
- One side opening with manual lock.
- Castor wheel are provided.
- Major role in cleaning the bay to keep unnecessary items away from the bay.



Injector Cleaning Machine (Semi Automatic)

Injector Cleaner Semi Automatic can perform cleaning & testing of all type of top feed and side feed multipoint, mono/single point fuel injectors for all types of MPFI vehicles.

Features

- Clean Pulse Flow Test Drain Leak Test R.P.M. Test (500-9000)



Spark Plug Cleaner & Tester

- Structure made of resin moulded fiber canopy .
- SPCT has been designed to cleaning of spark plug & testing the same under the stimulated condition prevailing in internal combustion engines. .
- Maximum pressure of 12kg/cm².
- Minimum pressure of 7kg/cm² which is essential for cleaning plug .
- Electronics Vibrator : 220V /12V
- Input voltage : 220V, AC, 50 Hz
- Working Pressure : 5kgf/cm²-12kgf/cm²

Battery Charger (Conventional + VRLA)

- * Range 2.5 Ah, 5 Ah, 7 Ah & 9 Ah
- * Fuse for every channel
- * Voltmeter for battery voltage
- * Indication for

(i) Mains	(iv) Open
(ii) Charging	(v) Fully Charged
(iii) Timer on	(vi) Rverse connection
	(vii) Selector sw. for Amp selection

Available in : 1+1, 1+2, 2+ 2 & 2+4 Channels

Application:

- * For conventional & VRLA batteries
- * For 2 wheeler battery
- * Parallel battery charging



SMPS Battery Charger (Horizontal)

- Range - 2.5 Ah to 9Ah
- Display - LCD (16X2)
- For 2 Wheeler Battery
- Fuse for every Channel
- Reverse Protection
- Available in 2, 3 & 4 Channel
- Dimension - 33X22X10 cm Approx



Electrician Tools Kit

This kit having all the necessary tools which have required by the technician at the time of servicing . Insulated tools are best option for electrical industries .

Lithium Ion Battery Storage Rack

- Specially designed for storage of Li-ion batteries.
- Compact & robust structure of design
- Separate compartment for each batteries.
- Total 48 nos. of batteries stored in a single unit.
- It can be used in service station or showroom for display purpose.
- Also be used in assembly line of electric two wheeler.
- Design & structure can be modified as per OEM requirement.
- Overall Size : 8X 1.8 X 5 ft
- Total Weight : 230 Kg (Approx)



Wall / Roof Type Pneumatic Hanger

- Structure made of MS pipe & sheet.
- It can mounted over wall/ roof. Designed as per site requirement.
- Specially designed for two wheeler service stations.
- These hanger generally used for operation of air impact wrench & air blow gun.



Pneumatic Tools & Accessories

- Pneumatic tool, air tool, air-powered tool or pneumatic-powered tool is a type of power tool, driven by compressed air supplied by an air compressor.
- For 2 Wheeler Service industry most common recommended tools are shown in picture.



1/2" Impact Wrench



3/8" Impact Wrench



Pnu. Ratchet



Socket Set



Pnu. Hose Reel



Air Blow Gun



FRL Unit



PU Coil Hose

Air Compressor with Autocut & safety Switch

- Single-stage belt-drive reciprocating compressors are designed for continuous duty applications. Our air compressors are reliable source that can generate up to 10 bar pressure making them the best industrial air compressor for most of the general engineering and automotive industrial applications. It comes with auto-cut & safety valve feature.
- Dual stage compression system.



Digital Tire Pressure Gauge

- Specially designed for service centres
- Easy to read digital display.
- Long lasting LED light for night use.
- Powerful & Compact.
- Easy to assemble or dismantle.



Digital Tire Inflator/Deflator with Preset Function

- Voltage : 220V
- Display Type : Digital
- Driven Type : Electric
- Pressure : 0-150PSI
- Max Pressure : 10Bar

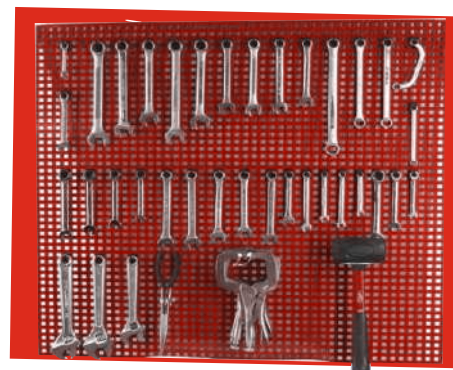
Technical Specifications :

- Designed for petrol pumps and service centres
- Extremely rugged and reliable design
- Large backlit 1" Dual LED Display
- Soft touch membrane keypad
- Automatic Tyre detection
- Automatic filling speed adjustment using intelligent software ensures fast inflation
- Safe with self diagnostics and always confirms a high set point to avoid wrong set point entry



Wall Mounted Tool Board

Perfect for storing your tools safely and efficiently. Perforated panels offer easy access to your whole collection as well as a clear visual reference to help you keep your inventory together and identify missing tools on Tool Board. These are available with wide range of accessories to store different types of tools on tool board.



Wall Mounted Tools Board with Aluminum Shutter

The cabinet housing is manufactured from perforated steel with a lockable impact resistant plastic roller door. Perfect for storing your tools safely and efficiently.

Vernier Calliper



Digital Vernier Calliper



Micro Meter



Digital Micro Meter



Inside Micro Meter



Dial Gauge



Cylinder Bore Gauge



Depth Gauge



Inside/ Outside Calliper



Degree Protector



Techometer



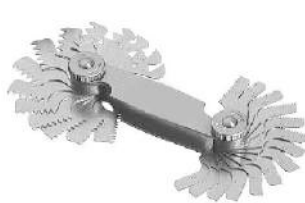
Multimeter



Hydrometer



Thread Gauge



Feeler Gauge



Plastic Gauge



Steel Rule



Measuring Tape



Straight Edge



Tri-Square



Safety Helmet



Surface Plate



V-Block



Hand Drill Machine



Drill Bit Set



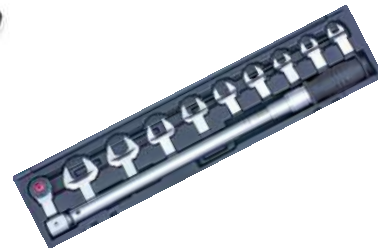
Hot Air Blow Gun



Torque Wrench



Torque Wrench with Jaw



Bench Vice



Bench Grinder



Sound Scope



Timing Light



Drum Wrench



Siphon Pump



White Board



Pin-Up Board



Punch Set



C-Clamp



Inspection Lamp



Anti Rust Spary



Open End Spanner Set



Ring Spanner Set



Combination Spanner Set



Screw Drivers



Curved Jaw Locking Plier



Diagonal Cutter



Combination Plier



Circlip Plier Set of 4 pcs.



Long Nose Plier



Water Pump Plier



Hose Clamp Plier



Adjustable Wrench



Pipe Wrench



Clip Remover



Rubber Hammer



Ball Pin Hammer



Riveting Hammer



Parts Bin



Magnetic Tray



Oil Can



Open End Spanner



Ring Spanner Single Ended



Screw Driver Set



Combination Plier



Nose Plier



Cutting Plier



Torque Wrench(5-25 NM)



Reversible Ratchet 3/8 inch Drive



Reversible Ratchet 1/2 inch Drive



T-Handle 3/8 inch Drive



T-Handle 1/2 inch Drive



Adjustable Spanner



Socket 1/2 inch Drive



Socket 3/8 inch Drive



Allen Keys



General & Special Service Tools



ENIGMA TUL[®]

THE MARK OF BEST POWER TOOLS

Complete Automotive Range of Automobiles Service Station Equipments for Hi-Tech Workshops

Add : SHED NO. 3, D C ENCLAVE, ROAD NO - 3, WAZIRPUR ROAD FARIDABAD - 121002

E-MAIL : info@enigmatul.com Mob: 8130039846