



AIRNET

10  
2023

# Catalog

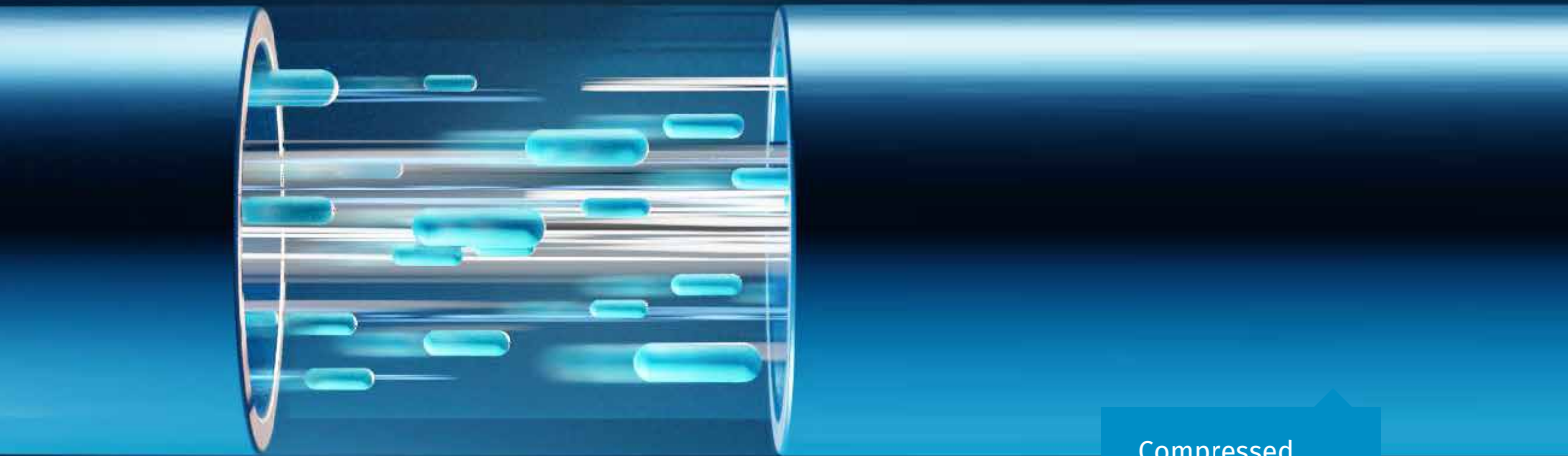
Preserve the power of air.



# Table of content

<b>Aluminium</b>	<b>3</b>
Piping	4
Fittings	5
Accessories	13
Tools	24
<b>Stainless Steel</b>	<b>29</b>
Piping	30
Fittings	30
Accessories	37
Tools	38
<b>Point-of-Use</b>	<b>41</b>
Filters and Regulators	42
Hose Reels	43
Hoses	44
Quick Release and Connectors	46
Socket Boxes	47
<b>Polyamide</b>	<b>48</b>
Piping	49
Fittings	49
Tools	52
Pipe Support	53

**AIRNET**



Compressed  
air, Vacuum,  
Nitrogen,  
Helium, Argon,  
Neon, Xenon  
and Krypton

# Aluminium

Your production deserves  
an optimal air piping system

# Aluminium Piping



## Aluminium Pipe for Air

Part Number	Name	Diameter	Pipe Length (ft)	Pipe Length (m)
2811 1000 00	Aluminium pipe for air D20	20mm	19	5.7
2811 2000 00	Aluminium pipe for air D25	25mm	19	5.7
2811 4000 00	Aluminium pipe for air D40	40mm	19	5.7
2811 5000 00	Aluminium pipe for air D50	50mm	19	5.7
2811 6000 00	Aluminium pipe for air D63	63mm	19	5.7
2811 7000 00	Aluminium pipe for air D80	80mm	19	5.7
2811 8000 00	Aluminium pipe for air D100	100mm	19	5.7
2811 9000 00	Aluminium pipe for air D158	158mm	19	5.7

## Aluminium Pipe for Inert Gases

Part Number	Name	Diameter	Pipe Length (ft)	Pipe Length (m)
2811 1061 00	Aluminium pipe for inert gases D20	20mm	19	5.7
2811 2061 00	Aluminium pipe for inert gases D25	25mm	19	5.7
2811 4061 00	Aluminium pipe for inert gases D40	40mm	19	5.7
2811 5061 00	Aluminium pipe for inert gases D50	50mm	19	5.7
2811 6061 00	Aluminium pipe for inert gases D63	63mm	19	5.7
2811 7061 00	Aluminium pipe for inert gases D80	80mm	19	5.7
2811 8061 00	Aluminium pipe for inert gases D100	100mm	19	5.7
2811 9061 00	Aluminium pipe for inert gases D158	158mm	19	5.7

## Aluminium Pipe for Vacuum

Part Number	Name	Diameter	Pipe Length (ft)	Pipe Length (m)
2811 1062 00	Aluminium pipe for vacuum D20	20mm	19	5.7
2811 2062 00	Aluminium pipe for vacuum D25	25mm	19	5.7
2811 4062 00	Aluminium pipe for vacuum D40	40mm	19	5.7
2811 5062 00	Aluminium pipe for vacuum D50	50mm	19	5.7
2811 6062 00	Aluminium pipe for vacuum D63	63mm	19	5.7
2811 7062 00	Aluminium pipe for vacuum D80	80mm	19	5.7
2811 8062 00	Aluminium pipe for vacuum D100	100mm	19	5.7
2811 9062 00	Aluminium pipe for vacuum D158	158mm	19	5.7

## Aluminium Pipe to Connect Drop Legs to Quick Drops

Part Number	Name	Diameter
2811 1067 05	Aluminium pipe to connect drop legs to quick drops D20	20mm
2811 2067 05	Aluminium pipe to connect drop legs to quick drops D25	25mm



# Fittings



## Adapter Union Kit ISO 228 Female

Part Number	Name	Diameter	Thread Outlet
2811 0019 80	Adapter Union Kit ISO 228 Female D20 3/8"	20mm	
2811 1019 80	Adapter Union Kit ISO 228 Female D20 1/2"	20mm	
2811 2019 80	Adapter Union Kit ISO 228 Female D25 1/2"	25mm	
2811 2119 80	Adapter Union Kit ISO 228 Female D25 3/4"	25mm	
2811 4219 80	Adapter Union Kit ISO 228 Female D40 1"	40mm	
2811 5419 80	Adapter Union Kit ISO 228 Female D50 1/2"	50mm	1 1/2"
2811 5519 80	Adapter Union Kit ISO 228 Female D50 2"	50mm	
2811 6519 90	Adapter Union Kit ISO 228 Female D63 2"	63mm	
2811 7619 90	Adapter Union Kit ISO 228 Female D80 1/2"	80mm	
2811 7719 90	Adapter Union Kit ISO 228 Female D80 3"	80mm	



## Adapter Union Kit NPT Female

Part Number	Name	Diameter	Diameter
2811 0020 80	Adapter Union Kit NPT Female D20 3/8"	3/4"	3/4"
2811 1020 80	Adapter Union Kit NPT Female D20 1/2"	3/4"	3/4"
2811 2020 80	Adapter Union Kit NPT Female D25 1/2"	1"	1"
2811 2120 80	Adapter Union Kit NPT Female D25 3/4"	1"	1"
2811 4220 80	Adapter Union Kit NPT Female D40 x 1"	1 1/2"	1 1/2"
2811 5420 80	Adapter Union Kit NPT Female D50 1 1/2"	2"	2"
2811 5520 80	Adapter Union Kit NPT Female D50 2"	2"	2"
2811 6520 90	Adapter Union Kit NPT Female D63 2"	2 1/2"	2 1/2"
2811 7620 90	Adapter Union Kit NPT Female D80 2 1/2"	3"	3"
2811 7720 90	Adapter Union Kit NPT Female D80 3"	3"	3"



## Adaptor Union Socket ISO 228 Female

Part Number	Name	Diameter
2811 1113 80	Adaptor Union Socket ISO 228 Female D20 3/4"	20mm
2811 2213 80	Adaptor Union Socket ISO 228 Female D25 1"	25mm
2811 4413 80	Adaptor Union Socket ISO 228 Female D40 x 1 1/2"	40mm
2811 5513 80	Adaptor Union Socket ISO 228 Female D50 2"	50mm
2811 6613 90	Adaptor Union Socket ISO 228 Female D63 2 1/2"	63mm
2811 7713 90	Adaptor Union Socket ISO 228 Female D80 3"	80mm



## Adaptor Union Socket NPT Female

Part Number	Name	Diameter
2811 1114 80	Adaptor Union Socket NPT Female D20 3/4"	3/4"
2811 2214 80	Adaptor Union Socket NPT Female D25 1"	1"
2811 4414 80	Adaptor Union Socket NPT Female D40 x 1 1/2"	1 1/2"
2811 5514 80	Adaptor Union Socket NPT Female D50 2"	2"
2811 6614 90	Adaptor Union Socket NPT Female D63 2 1/2"	2 1/2"
2811 7714 90	Adaptor Union Socket NPT Female D80 3"	3"

## Elbow 90°



Part Number	Name	Diameter
2810 8003 00	Elbow 90° D100	100mm
2810 9003 00	Elbow 90° D158	158mm
2811 1003 80	Elbow 90° D20	20mm
2811 2003 80	Elbow 90° D25	25mm
2811 4003 80	Elbow 90° D40	40mm
2811 5003 80	Elbow 90° D50	50mm
2811 6003 90	Elbow 90° D63	63mm
2811 7003 90	Elbow 90° D80	80mm

Please add 2 pieces of 2810 8802 00

## Elbow 45°



Part Number	Name	Diameter
2810 8004 00	Elbow 45° D100	100mm
2810 9004 00	Elbow 45° D158	158mm
2811 1004 80	Elbow 45° D20	20mm
2811 2004 80	Elbow 45° D25	25mm
2811 4004 80	Elbow 45° D40	40mm
2811 5004 80	Elbow 45° D50	50mm
2811 6004 90	Elbow 45° D63	63mm
2811 7004 90	Elbow 45° D80	80mm

Please add 2 pieces of 2810 8802 00

## End Cap



Part Number	Name	Diameter
2810 9816 00 D100	End Cap D100	100mm
2810 9816 00 D158	End Cap D158	158mm
2811 1006 80	End Cap D20	20mm
2811 2006 80	End Cap D25	25mm
2811 4006 80	End Cap D40	40mm
2811 5006 80	End Cap D50	50mm
2811 6006 90	End Cap D63	63mm
2811 7006 90	End Cap D80	80mm

Please add 1 piece of 2810 8802 00

## Equal Socket (Union)



Part Number	Name	Diameter
2810 8802 00	Equal Socket (Union) D100	100mm
2810 9002 00	Equal Socket (Union) D158	158mm
2811 1002 80	Equal Socket (Union) D20	20mm
2811 2002 80	Equal Socket (Union) D25	25mm
2811 4002 80	Equal Socket (Union) D40	40mm
2811 5002 80	Equal Socket (Union) D50	50mm
2811 6002 90	Equal Socket (Union) D63	63mm
2811 7002 90	Equal Socket (Union) D80	80mm

## Equal Tee



Part Number	Name	Diameter
2810 8005 00	Equal Tee D100	100mm
2810 9005 00	Equal Tee D158	158mm
2811 1005 80	Equal Tee D20	20mm
2811 2005 80	Equal Tee D25	25mm
2811 4005 80	Equal Tee D40	40mm
2811 5005 80	Equal Tee D50	50mm
2811 6005 90	Equal Tee D63	63mm
2811 7005 90	Equal Tee D80	80mm

Please add 3 pieces of 2810 8802 00





## Reducing Tees ISO 228

Part Number	Name	Diameter	Thread Outlet
2811 7708 90	Reducing Tee threaded - D80 ( 3" ) X 3" ISO	80mm	80mm



## Reducing Tees NPT

Part Number	Name	Diameter	Thread Outlet
2811 7709 90	Equal Tee threaded - D80 ( 3" ) X 3" NPT	3"	3"

## Flat Gasket



Part Number	Name	Diameter
0650 0100 06 D100	Flat Gasket D100	100mm
0650 0100 16	Flat Gasket D63	63mm
0650 1001 25	Flat Gasket D158	158mm
0650 1001 27 D80	Flat Gasket D80	80mm

## Flange Support / Valve support



Part Number	Name	Diameter
2810 0006 38	Flange Support / Valve support D63	63mm
2810 0007 38	Flange Support / Valve support D80	80mm
2810 8064 00	Flange Support / Valve support D100	100mm
2810 9064 00	Flange Support / Valve support D158	158mm
2811 1264 10 D20	Flange Support / Valve support D20	20mm
2811 1264 10 D25	Flange Support / Valve support D25	25mm

## Flange Bolts & Nuts



Part Number	Name	Diameter
2810 0154 08	Flange Bolts & Nuts Metric D100	100mm
2810 0254 08	Flange Bolts & Nuts UNC D100	100mm
2810 0354 08	Flange Bolts & Nuts Metric D158	158mm
2810 0454 08	Flange Bolts & Nuts UNC D158	158mm

## Flanges



Part Number	Name	Diameter
2810 8154 00	Flange DIN standard D100	100mm
2810 8254 00	Flange ANSI D100	100mm
2810 9154 00	Flange DIN/ANSI D158	158mm
2811 6054 90	Flange DIN D63	63mm
2811 6154 90	Flange ANSI D63	63mm
2811 7054 90	Flange DIN D80	80mm
2811 7154 90	Flange ANSI D80	80mm

Please add 1 piece of 2810 8802 00

## Manifolds



Part Number	Name	Diameter	Number of Outlets	Outlet Size	Thread Outlet
2811 1042 80	Manifolds D20 ISO 228	20mm	6	1/2"	
2811 1043 80	Manifolds D20 NPT	3/4"	6		1/2"
2811 2042 80	Manifolds D25 ISO 228	25mm	6	1/2"	
2811 2043 80	Manifolds D25 NPT	1"	6		1/2"

Plugs need to be ordered separately: 2811 0074 02

## Nipple Socket ISO 7-R Male Aluminium



Part Number	Name	Diameter	Thread Outlet
2811 1017 80	Nipple Socket ISO 7-R Male Aluminium D20 x 1/2"	20mm	15mm
2811 1117 80	Nipple Socket ISO 7-R Male Aluminium D20 x 3/4"	20mm	20mm
2811 2117 80	Nipple Socket ISO 7-R Male Aluminium D25 x 3/4"	25mm	20mm
2811 2217 80	Nipple Socket ISO 7-R Male Aluminium D25 x 1"	25mm	25mm
2811 4317 80	Nipple Socket ISO 7-R Male Aluminium D40 x 1 1/4"	40mm	32mm
2811 4417 80	Nipple Socket ISO 7-R Male Aluminium D40 x 1 1/2"	40mm	40mm
2811 5417 80	Nipple Socket ISO 7-R Male Aluminium D50 x 1 1/2"	50mm	40mm
2811 5517 80	Nipple Socket ISO 7-R Male Aluminium D50 x 2"	50mm	50mm
2811 6517 90	Nipple Socket ISO 7-R Male Aluminium D63 x 2"	63mm	50mm
2811 6617 90	Nipple Socket ISO 7-R Male Aluminium D63 x 2 1/2"	63mm	63mm
2811 7617 90	Nipple Socket ISO 7-R Male Aluminium D80 x 2 1/2"	80mm	63mm
2811 7717 90	Nipple Socket ISO 7-R Male Aluminium D80 x 3"	80mm	80mm





## Nipple Socket NPT Male Aluminium

Part Number	Name	Diameter	Thread Outlet
2811 1018 80	Nipple Socket NPT Male Aluminium D20 x 1/2"	3/4"	1/2"
2811 1118 80	Nipple Socket NPT Male Aluminium D20 x 3/4"	3/4"	3/4"
2811 2118 80	Nipple Socket NPT Male Aluminium D25 x 3/4"	1"	3/4"
2811 2218 80	Nipple Socket NPT Male Aluminium D25 x 1"	1"	1"
2811 4318 80	Nipple Socket NPT Male Aluminium D40 x 1 1/4"	1 1/2"	1 1/4"
2811 4418 80	Nipple Socket NPT Male Aluminium D40 x 1 1/2"	1 1/2"	1 1/2"
2811 5418 80	Nipple Socket NPT Male Aluminium D50 x 1 1/2"	2"	1 1/2"
2811 5518 80	Nipple Socket NPT Male Aluminium D50 x 2"	2"	2"
2811 6518 90	Nipple Socket NPT Male Aluminium D63 x 2"	2 1/2"	2"
2811 6618 90	Nipple Socket NPT Male Aluminium D63 x 2 1/2"	2 1/2"	2 1/2"
2811 7618 90	Nipple Socket NPT Male Aluminium D80 x 2 1/2"	3"	2 1/2"
2811 7718 90	Nipple Socket NPT Male Aluminium D80 x 3"	3"	3"



## Quickdrop ISO 228 Female

Part Number	Name	Diameter	Thread Outlet
2811 2011 80	Quickdrop ISO 228 Female D25 x 1/2"	25mm	15mm
2811 4011 80	Quickdrop ISO 228 Female D40 x 1/2"	40mm	15mm
2811 4111 80	Quickdrop ISO 228 Female D40 x 3/4"	40mm	20mm
2811 5011 80	Quickdrop ISO 228 Female D50 x 1/2"	50mm	15mm
2811 5111 80	Quickdrop ISO 228 Female D50 x 3/4"	50mm	20mm
2811 6011 80	Quickdrop ISO 228 Female D63 x 1/2"	63mm	15mm
2811 6111 80	Quickdrop ISO 228 Female D63 x 3/4"	63mm	20mm
2811 7011 80	Quickdrop ISO 228 Female D80 x 1/2"	80mm	15mm
2811 7111 80	Quickdrop ISO 228 Female D80 x 3/4"	80mm	20mm



## Quickdrop NPT Female

Part Number	Name	Diameter	Thread Outlet
2811 2012 80	Quickdrop NPT Female D25 x 1/2"	1"	1/2"
2811 4012 80	Quickdrop NPT Female D40 x 1/2"	1 1/2"	1/2"
2811 4112 80	Quickdrop NPT Female D40 x 3/4"	1 1/2"	3/4"
2811 5012 80	Quickdrop NPT Female D50 x 1/2"	2"	1/2"
2811 5112 80	Quickdrop NPT Female D50 x 3/4"	2"	3/4"
2811 6012 80	Quickdrop NPT Female D63 x 1/2"	2 1/2"	1/2"
2811 6112 80	Quickdrop NPT Female D63 x 3/4"	2 1/2"	3/4"
2811 7012 80	Quickdrop NPT Female D80 x 1/2"	3"	1/2"
2811 7112 80	Quickdrop NPT Female D80 x 3/4"	3"	3/4"



## Quickdrop

Part Number	Name	Diameter	Reduced Outlet
2811 2110 80	Quickdrop D25 x 3/4"	25mm	20mm
2811 4110 80	Quickdrop D40 x 3/4"	40mm	20mm
2811 4210 80	Quickdrop D40 x 1"	40mm	25mm
2811 5110 80	Quickdrop D50 x 3/4"	50mm	20mm
2811 5210 80	Quickdrop D50 x 1"	50mm	25mm
2811 6110 80	Quickdrop D63 x 3/4"	63mm	20mm
2811 6210 80	Quickdrop D63 x 1"	63mm	25mm
2811 7110 80	Quickdrop D80 x 3/4"	80mm	20mm
2811 7210 80	Quickdrop D80 x 1"	80mm	25mm

## Quickdrop



Part Number	Name	Diameter	Reduced Outlet
2811 8110 80	Quick drop D100 x D20	100	20mm
2811 8111 80	Quick drop threaded ISO D100 x 3/4"	100	20mm
2811 8112 80	Quick drop threaded NPT D100 x 3/4"	100	20mm
2811 8210 80	Quick drop D100 x D25	100	25mm
2811 8211 80	Quick drop threaded ISO D100 x 1"	100	25mm
2811 8212 80	Quick drop threaded NPT D100 x 1"	100	25mm
2811 8410 80	Quick drop D100 x D40		40mm
2811 8411 80	Quick drop threaded ISO D100 x 1 1/2"		40mm
2811 8412 80	Quick drop threaded NPT D100 x 1 1/2"		40mm
2811 8510 80	Quick drop D100 x D50		50mm
2811 8511 80	Quick drop threaded ISO D100 x 2"		50mm
2811 8512 80	Quick drop threaded NPT D100 x 2"		50mm
2811 9110 80	Quick drop D158 x D20		20mm
2811 9111 80	Quick drop threaded ISO D158 x 3/4"		20mm
2811 9112 80	Quick drop threaded NPT D158 x 3/4"		20mm
2811 9210 80	Quick drop D158 x D25		25mm
2811 9211 80	Quick drop threaded ISO D158 x D25		25mm
2811 9212 80	Quick drop threaded NPT D158 x D25		25mm
2811 9410 80	Quick drop D158 x D40		40mm
2811 9411 80	Quick drop threaded ISO D158 x D40		40mm
2811 9412 80	Quick drop threaded NPT D158 x D40		40mm
2811 9510 80	Quick drop D158 x D50		50mm
2811 9511 80	Quick drop threaded ISO D158 x D50		50mm
2811 9512 80	Quick drop threaded NPT D158 x D50		50mm

## Reduction Socket



Part Number	Name	Diameter	Reduced Outlet
2810 8721 00	Reduction Socket D100 ( 4" ) x D80 ( 3" )	100mm	80mm
2810 9821 00	Reduction Socket D158 ( 6" ) x D100 ( 4" )	158mm	100mm
2811 2121 80	Reduction Socket D25 ( 1" ) D20 ( 3/4" )	25mm	20mm
2811 4221 80	Reduction Socket D40 ( 1 1/2" ) x D25 ( 1" )	40mm	25mm
2811 5421 80	Reduction Socket D50 ( 2" ) x D40 ( 1 1/2" )	50mm	40mm
2811 6521 90	Reduction Socket D63 ( 2 1/2" ) x D50 ( 2" )	63mm	50mm
2811 7621 90	Reduction Socket D80 ( 3" ) x D63 ( 2 1/2" )	80mm	63mm

Please add 1 piece of 2810 8802 00 & 1 piece of 2811 7002 90

## Pipe end adaptors



Part Number	Name	Diameter
2811 6462 80	Pipe end adaptor D63 (2 1/2") - D40 (1 1/2")	63mm
2811 7462 80	Pipe end adaptor D80 (3") x D40 (1 1/2")	80mm
2811 7562 80	Pipe end adaptor D80 (3") x D50 (2")	80mm

AIRnet end D40 (1 1/2")

## Reducing Tees ISO 228



Part Number	Name	Diameter	Thread Outlet
2810 8208 00	Reducing Tee threaded - D100 (4") 1" ISO	100mm	25mm
2810 9208 00	Reducing Tee threaded - D158 (6") 1" ISO	158mm	25mm
2811 0008 80	Reducing Tee threaded - D20 (3/4") x 3/8" ISO	20mm	9,5mm
2811 1008 80	Reducing Tee threaded - D20 (3/4") 1/2" ISO	20mm	15mm
2811 2008 80	Reducing Tee threaded - D25 (1") 1/2" ISO	25mm	20mm
2811 2108 80	Reducing Tee threaded - D25 (1") 3/4" ISO	25mm	25mm
2811 4208 80	Reducing Tee threaded - D40 (1 1/2") 1" ISO	40mm	25mm
2811 5208 80	Reducing Tee threaded - D50 (2") 1" ISO	50mm	25mm
2811 6508 90	Reducing Tee threaded - D63 (2 1/2") 2" ISO	63mm	50mm
2811 7608 90	Reducing Tee threaded - D80 (3") 2 1/2" ISO	80mm	63mm

Please add 2 pieces of 2810 8802 00





## Reducing Tees NPT

Part Number	Name	Diameter	Thread Outlet
2810 8209 00	Reducing Tee threaded NPT - D100 (4") X 1"	4"	1"
2810 9209 00	Reducing Tee threaded - D158 (6") X 1" NPT	6"	1"
2811 0009 80	Reducing Tee threaded - D20 (3/4") X 3/8" NPT	3/4"	3/8"
2811 1009 80	Reducing Tee threaded NPT - D20 (3/4") x 1/2"	3/4"	1/2"
2811 2009 80	Reducing Tee threaded - D25 (1") X 1/2" NPT	1"	3/4"
2811 2109 80	Reducing Tee threaded - D25 (1") X 3/4" NPT	1"	3/4"
2811 4209 80	Reducing Tee threaded - D40 (1 1/2") X 1" NPT	1 1/2"	1"
2811 5209 80	Reducing Tee threaded - D50 (2") X 1" NPT	2"	1"
2811 6509 90	Reducing Tee threaded - D63 (2 1/2") X 2" NPT	2 1/2"	2"
2811 7609 90	Reducing Tee threaded NPT - D80 (3") X 2 1/2"	3"	2 1/2"

Please add 2 pieces of 2810 8802 00



## Reducing Tees

Part Number	Name	Diameter	Reduced Outlet	Thread Outlet
2810 8507 00	Reducing Tee - D100 (4") X D50 (2")	100mm	50mm	
2810 8607 00	Reducing Tee - D100 (4") X D63 (2 1/2")	100mm	63mm	
2810 8707 00	Reducing Tee - D100 (4") X D80 (3")	100mm	80mm	
2810 9707 00	Reducing Tee - D158 (6") X D80 (3")	158mm	80mm	
2810 9807 00	Reducing Tee - D158 (6") X D100 (4")	158mm	100mm	
2811 2107 80	Reducing Tee - D25 (1") x D20 (3/4")	25mm	20mm	
2811 4107 80	Reducing Tee - D40 (1 1/2") x D20 (3/4")	40mm	20mm	
2811 4207 80	Reducing Tee - D40 (1 1/2") x D25 (1")	40mm	25mm	
2811 5107 80	Reducing Tee - D50 (2") x D20 (3/4")	50mm	20mm	
2811 5207 80	Reducing Tee - D50 (2") x D25 (1")	50mm	25mm	
2811 5407 80	Reducing Tee - 50 (2") x D40 (1 1/2")	50mm	40mm	
2811 6407 90	Reducing Tees - D63 (2 1/2") X D40 (1 1/2")	63mm	40mm	63mm
2811 6507 90	Reducing Tee - D63 (2 1/2") x D50 (2")	63mm	50mm	
2811 7407 90	Reducing Tee D80 (3") x D40 (1 1/2")	80mm	40mm	80mm
2811 7607 90	Reducing Tee - D80 (3") x D63 (2 1/2")	80mm	63mm	

Please add 2 pieces of 2810 8802 00 & 1 piece 2811 5002 80



## Butterfly Valve

Part Number	Name	Diameter
1606 4561 04	Butterfly Valve D100	100mm
2810 9051 00	Butterfly Valve D158	158mm
2811 6051 90	Butterfly Valve D63	63mm
2811 7051 90	Butterfly Valve D80	80mm

Valve supports are mandatory and need to be ordered separately:

Gasket: 0650 0100 06  
 Flanges: 2810 8154 00  
 Flange support: 2810 8064 00  
 Flange bolts & nuts: 2810 0154 08

## Ball Valve



Part Number	Name	Diameter
2811 1051 91	Ball Valve D20	20mm
2811 2051 91	Ball Valve D25	25mm
2811 4051 91	Ball Valve D40	40mm
2811 5051 91	Ball Valve D50	50mm

Valve supports are mandatory.

## Ball Valve ISO 228 Female



Part Number	Name	Diameter
2811 1152 91	Ball Valve ISO 228 Female D20	20mm
2811 2252 91	Ball Valve ISO 228 Female D25	25mm
2811 4452 91	Ball Valve ISO 228 Female D40	40mm
2811 5552 91	Ball Valve ISO 228 Female D50	50mm

Valve supports are mandatory.

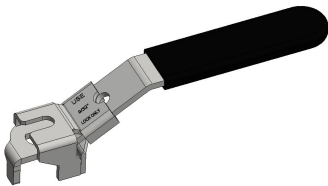
## Ball Valve NPT Female



Part Number	Name	Diameter
2811 1153 91	Ball Valve NPT Female D20	3/4"
2811 2253 91	Ball Valve NPT Female D25	1"
2811 4453 91	Ball Valve NPT Female D40	1 1/2"
2811 5553 91	Ball Valve NPT Female D50	2"

Valve supports are mandatory.

## LOTO handles



Part Number	Name	Diameter
2811 1251 00	LOTO handles D20-D25	20mm-25mm
2811 4551 00	LOTO handles D40-D50	40mm-50mm

## Butterfly Valves Threaded



Part Number	Name	Diameter
2811 6652 90	Butterfly Valve PM D63 ISO 228 Female 2 1/2"	63mm
2811 6653 90	Butterfly Valve PM D63 NPT Female 2 1/2"	2 1/2"
2811 7752 90	Butterfly Valve PM D80 ISO 228 Female 3"	80mm
2811 7753 90	Butterfly Valve PM D80 NPT Female 3"	3"

Valve supports are mandatory.



## Wall Mounted Nipples Threaded

Part Number	Name	Diameter	Thread Outlet
2811 0025 80	Wall Mounted Nipple 3 Port ISO 228 - Inlet 1/2" Threaded - Thread outlet 1/2"	20mm	1/2"
2811 0026 80	Wall Mounted Nipple 3 Port NPT - Inlet 1/2" threaded - Thread outlet 1/2"	3/4"	1/2"
2811 1025 80	Wall Mounted Nipple 3 Port ISO 228 - Inlet 3/4" Threaded - Thread outlet 1/2"	12,7mm	1/2"
2811 1026 80	Wall Mounted Nipple 3 Port NPT - Inlet 3/4" threaded - Thread outlet 1/2"	1/2"	1/2"
2811 2040 80	Wall Mounted Nipple 1 port ISO 228 - Inlet AIRnet end - Thread outlet 1/2"	25mm	1/2"
2811 2041 80	Wall Mounted Nipple 1 port NPT 228 - Inlet AIRnet end - Thread outlet 1/2"	1"	1/2"



## Wall Mounted Nipples

Part Number	Name	Diameter	Thread Outlet
2811 0074 02	Plugs for wall mount		
2811 0075 02	Plugs for wall mount NPT D20		
2811 1023 80	Wall Mounted Nipple 3 Port ISO 228 - Inlet AIRnet end D20 - Thread outlet 1/2"	20mm	1/2"
2811 1024 80	Wall Mounted Nipple 3 Port NPT - Inlet AIRnet end D20 - Thread outlet 1/2"	3/4"	1/2"
2811 1040 80	Nipple wall mount 1 port ISO 228 - Inlet AIRnet end - Thread outlet 1/2"	20mm	1/2"
2811 1041 80	Nipple wall mount 1 port NPT 228 - Inlet AIRnet end - Thread outlet 1/2"	3/4"	1/2"
2811 2023 80	Wall Mounted Nipple 3 Port ISO 228 - Inlet AIRnet end D25 - Thread outlet 1/2"	25mm	1/2"
2811 2024 80	Wall Mounted Nipple 3 Port NPT - Inlet AIRnet end D25- Thread outlet 1/2"	1"	1/2"

## Accessories



## Conductivity Strap

Part Number	Name	Diameter
2810 0191 00	Conductivity Strap	20mm-158mm



## Conductivity Strip Equal Socket D20-D25

Part Number	Name	Diameter
2811 1002 90	Conductivity Strip Equal Socket	20mm-25mm



## Conductivity Strip Elbow 90°



Part Number	Name	Diameter
2811 1003 90	Conductivity Strip Elbow 90° D20	20mm
2811 2003 90	Conductivity Strip Elbow 90° D25	25mm
2811 4003 90	Conductivity Strip Elbow 90° D40	40mm
2811 5003 90	Conductivity Strip Elbow 90° D50	50mm

## Conductivity Strip Elbow 45°



Part Number	Name	Diameter
2811 1004 90	Conductivity Strip Elbow 45° D20	20mm
2811 2004 90	Conductivity Strip Elbow 45° D25	25mm
2811 4004 90	Conductivity Strip Elbow 45° D40	40mm
2811 5004 90	Conductivity Strip Elbow 45° D50	50mm

## Conductivity Strip Equal Tee



Part Number	Name	Diameter
2811 1005 90	Conductivity Strip Equal Tee D20	20mm
2811 2005 90	Conductivity Strip Equal Tee D25	25mm
2811 4005 90	Conductivity Strip Equal Tee D40	40mm
2811 5005 90	Conductivity Strip Equal Tee D50	50mm

## Conductivity Strip Equal Socket D40



Part Number	Name	Diameter
2811 4002 90	Conductivity Strip Equal Socket	40mm

## Conductivity Strip Equal Socket D50



Part Number	Name	Diameter
2811 5002 90	Conductivity Strip Equal Socket	50mm



## Hexagon Nipples ISO 7-R Male

Part Number	Name	Diameter
2811 0076 00	Hexagon Nipples ISO 7-R Male 1/2"	15mm
2811 1176 00	Hexagon Nipples ISO 7-R Male 3/4"	20mm
2811 2276 00	Hexagon Nipples ISO 7-R Male 1"	25mm
2811 4476 00	Hexagon Nipples ISO 7-R Male 1 1/2"	40mm
2811 5576 00	Hexagon Nipples ISO 7-R Male 2"	50mm



## Hexagon Nipples NPT Male

Part Number	Name	Diameter
2811 0077 00	Hexagon Nipples NPT Male 1/2"	1/2"
2811 1177 00	Hexagon Nipples NPT Male 3/4"	3/4"
2811 2277 00	Hexagon Nipples NPT Male 1"	1"
2811 4477 00	Hexagon Nipples NPT Male 1 1/2"	1 1/2"
2811 5577 00	Hexagon Nipples NPT Male 2"	2"



## Sockets ISO 228 Female (Union)

Part Number	Name	Diameter
2811 0078 00	Sockets ISO 228 Female (Union) 1/2"	15mm
2811 1178 00	Sockets ISO 228 Female (Union) 3/4"	20mm
2811 2278 00	Sockets ISO 228 Female (Union) 1"	25mm
2811 3378 00	Sockets ISO 228 Female (Union) 1 1/4"	32mm
2811 4478 00	Sockets ISO 228 Female (Union) 1 1/2"	40mm
2811 5578 00	Sockets ISO 228 Female (Union) 2"	50mm



## Sockets NPT Female (Union)

Part Number	Name	Diameter
2811 0079 00	Sockets NPT Female (Union) 1 1/4"	1 1/4"
2811 1179 00	Sockets NPT Female (Union) 1/2"	1/2"
2811 2279 00	Sockets NPT Female (Union) 3/4"	3/4"
2811 3379 00	Sockets NPT Female (Union) 1"	1"
2811 4479 00	Sockets NPT Female (Union) 1 1/2"	1 1/2"
2811 5579 00	Sockets NPT Female (Union) 2"	2"

## Demobox



Part Number	Name
2810 0846 00	Demobox for AIRnet Ø 100
2811 0046 00	Demobox for AIRnet PF series

## Hanging Solutions Channel C-profile



Part Number	Name
2810 0030 05	Hanging Solutions Channel C-profile 30mmx2000mm

## Wallbracket C-profile



Part Number	Name
2810 0031 05	Wall bracket C-profile 50mmX76mm

## Cantilever Arm



Part Number	Name
2810 0032 05	Cantilever arm 40mmx306mm
2810 0132 00	Cantilever Arm 40mmx540mm

## T-bolts



Part Number	Name
2810 0033 10	T-bolt L=30 M8
2810 0133 10	T-bolt L=40 M8
2810 0233 10	T-bolt L=60 M8
2810 0333 10	T-bolt L=80 M8





## Cantilver Arm Protection Cap

Part Number	Name
2810 0034 10	Protection cap

## Push-in Beam Clamp for I profile



Part Number	Name
2810 0035 10	Push-in beam clamp for I profile M8
2810 0135 10	Push-in beam clamp for I profile M8
2810 0235 10	Push-in beam clamp for I profile M8
2810 0335 10	Push-in beam clamp for I profile M8
2810 1035 10	Push-in beam clamp for I profile M6
2810 1135 10	Push-in beam clamp for I profile M6
2810 1235 10	Push-in beam clamp for I profile M6
2810 1335 10	Push-in beam clamp for I profile M6

## Screw Beam Clamp M8



Part Number	Name
2810 0036 10	Screw beam clamp M8

## U-bolt Beam Clamp M6



Part Number	Name
2810 0037 10	U-bolt Beam Clamp

## Hang Clamp H profile



Part Number	Name
2810 0038 10	Hang clamp for H profile M8
2810 0138 10	Hang clamp for H profile M8
2811 1038 10	Hang clamp for H profile M6
2811 1138 10	Hang clamp for H profile M6

## Roof Clamp



Part Number	Name
2810 0039 10	Roof Clamp M8
2810 1039 10	Roof Clamp M6



## Canalis KN Hanger

Part Number	Name
2810 0250 05	Canalis KN Hanger

## Sliding Nut



Part Number	Name
2810 1033 10	Sliding nut M6

## Screw Beam Clamp M6



Part Number	Name
2810 1036 10	Screw beam clamp M6

## Straight end hose ISO 228 Female



Part Number	Name	Diameter
2810 1055 00	Straight end hose ISO 228 Female D20 L=750mm	20mm
2810 1155 00	Straight end hose ISO 228 Female D20 L=1500mm	20mm
2810 2055 00	Straight end hose ISO 228 Female D25 L=750mm	25mm
2810 2155 00	Straight end hose ISO 228 Female D25 L=1500mm	25mm
2810 4155 00	Straight end hose ISO 228 Female D40	40mm
2810 5155 00	Straight end hose ISO 228 Female D50	40mm

Length= 750 mm

## Straight End Hose NPT Female



Part Number	Name	Diameter
2810 1057 00	Straight end hose NPT Female D20 L=750mm	3/4"
2810 1157 00	Straight end hose NPT Female D20 L=1500mm	3/4"
2810 2057 00	Straight end hose NPT Female D25 L=750mm	1"
2810 2157 00	Straight end hose NPT Female D25 L=1500mm	1"
2810 4157 00	Straight end hose NPT Female D40	1 1/2"
2810 5157 00	Straight end hose NPT Female D50	2"

Length= 750mm

## Elbow End Hose ISO 228 Female



Part Number	Name	Diameter
2810 4055 00	Elbow end hose ISO 228 Female D40	40mm
2810 5055 00	Elbow end hose ISO 228 Female D50	50mm

## Elbow End Hose NPT Female



Part Number	Name	Diameter
2810 4057 00	Elbow end hose NPT Female D40	1 1/2"
2810 5057 00	Elbow end hose NPT Female D50	2"

### Flanged End Hose - Elbow - DN65 DIN PN10/PN16



Part Number	Name	Diameter
2810 6055 00	Flanged end hose - Elbow - DN65 DIN PN10/PN16 D63	63mm

### Flanged End Hose - Straight - DN65 DIN PN10/PN16



Part Number	Name	Diameter
2810 6155 00	Flanged end hose - Straight - DN65 DIN PN10/PN16 D63	63mm

### Flanged End Hose - Elbow - DN80 DIN PN10/PN16



Part Number	Name	Diameter
2810 7055 00	Flanged end hose - Elbow - DN80 DIN PN10/PN16 D80	80mm

### Flanged End Hose - Straight - DN80 DIN PN10/PN16



Part Number	Name	Diameter
2810 7155 00	Flanged end hose - Straight - DN80 DIN PN10/PN16 D80	80mm

### Lables Pressure

PRESSURE

Part Number	Name
2810 8067 05	Lables Pressure





## Lables Vacuum

Part Number	Name
2810 8167 05	Lables Vacuum



## Protection Strap against Whiplash

part Number	Name	Diameter
2810 0055 00	For AIRnet Ø 20 - 32mm (¾" - 1¼")	20mm-32mm
2810 0055 01	For AIRnet Ø 40 - 80mm (1½" - 3")	40mm-80mm



## O-ring for Inner Parts

Part Number	Name	Diameter
2810 6065 10	O-ring for inner parts D63	63mm
2810 7065 10	O-ring for inner parts D80	80mm

## Bolts and Clips

Part Number	Name	Diameter
2810 8060 10	Bolts and clips D100	100mm



## Seal for Equal Socket Vacuum



Part Number	Name	Diameter
2810 8165 05	Seal for Equal socket Vacuum D100	100mm

## Seal for Equal Socket Compressed Air



Part Number	Name	Diameter
2810 8266 05	Seal for Equal Socket Compressed Air D100	100mm

## Seal for Quickdrop



Part Number	Name	Diameter
2811 2065 10	Seal for quickdrop D25	25mm
2811 4065 10	Seal for quickdrop D40-D50	40mm-50mm
2811 6065 10	Seal for quickdrop D63-D80	63mm-80mm

## Pipe Clip Spacer Steel



Part Number	Name	Diameter
2810 0227 10	Pipe Clip Spacer Steel D25	25mm
2810 0327 10	Pipe Clip Spacer Steel D50	50mm

## Pipe Clip Metric nut



Part Number	Name	Diameter
2810 8122 10	Pipe Clip Metric nut D100	100mm
2810 9022 10	Pipe Clip Metric nut D158	158mm
2811 1022 20	Pipe Clip Metric nut D20	20mm
2811 2022 20	Pipe Clip Metric nut D25	25mm
2811 4022 20	Pipe Clip Metric nut D40	40mm
2811 5022 20	Pipe Clip Metric nut D50	50mm
2811 6022 20	Pipe Clip Metric nut D63	63mm
2811 7022 20	Pipe Clip Metric nut D80	80mm

Thread Size M10

## Pipe Clip UNC nut



Part Number	Name	Diameter
2810 9122 10	Pipe Clip UNC nut D158 3/8 UNC	6"
2811 1122 20	Pipe Clip UNC nut D20 1/4 UNC	3/4"
2811 2122 20	Pipe Clip UNC nut D25 1/4 UNC	1"
2811 4122 20	Pipe Clip UNC nut D40 1/4 UNC	1 1/2"
2811 5122 20	Pipe Clip UNC nut D50 1/4 UNC	2"
2811 6122 20	Pipe Clip UNC nut D63 5/16 UNC	2 1/2"
2811 7122 20	Pipe Clip UNC nut D80 5/16 UNC	3"

Thread Size: UNC 3/8

## Pipe Clip Spacer Polymer



Part Number	Name	Diameter
2811 0027 10	Pipe Clip Spacer Polymer D15	15mm
2811 0127 10	Pipe Clip Spacer Polymer D20	20mm
2811 0227 10	Pipe Clip Spacer Polymer D30	30mm

## Pipe Clip Adaptor Bolt Metric to Metric



Part Number	Name
2811 0072 00	Pipe Clip Adaptor Bolt Metric to Metric

## Pipe Clip Adaptor Bolt UNC to UNC



Part Number	Name
2811 0172 00	Pipe Clip Adaptor Bolt UNC to UNC 1/4 UNC - 3/8 UNC
2811 0272 00	Pipe Clip Adaptor Bolt UNC to UNC 5/16 UNC - 3/8 UNC

## Pipe Clip Adaptor Bolt Metric to UNC



Part Number	Name
2811 0372 00	Pipe Clip Adaptor Bolt Metric to UNC M10 - 3/8 UNC

## Tools



### Pipe Cutter Manual

Part Number	Name	Diameter
2810 0040 00	Pipe Cutter Manual D20-63	20mm-63mm
2810 0140 00	Pipe Cutter Manual D50-100	50mm-100mm
2810 0240 00	Pipe Cutter Manual D100-158	100mm-158mm
2810 0340 00	Spare Cutter Blade	20mm-63mm
2810 0440 00	Spare Cutter Blade	40mm-158mm



### Pipe Deburrer Rigid

Part Number	Name	Diameter
2810 0041 00 Plastic	Pipe Deburrer Rigid Plastic	20mm-25mm
2810 0141 00	Pipe Deburrer Rigid Metal D20-50	20mm-50mm
2810 0141 00 Metal	Pipe Deburrer Rigid Metal	20mm-50mm
2810 0841 00	Pipe Deburrer Rigid D63-100	63mm-100mm
2810 0841 00 Rigid D63-D100	Pipe Deburrer Rigid D63-100	63mm-100mm

### Hole Deburrer



Part Number	Name
2810 0042 00	Pen - Light Duty
2810 0641 00	Pen - Heavy Duty



## Drill Bit Holder



Part Number	Name	Diameter
2810 0044 00	Drill Bit Holder For Ø 25mm/1" - 80mm/3"	25mm-80mm

## Drill Bit



Part Number	Name	Diameter
2810 0143 00	Drill Bit for AIRnet Quick Drops D25	25mm
2810 0243 00	Drill Bit for AIRnet Quick Drops D40-D80	40mm-80mm

## Lubricant Gymna Gel Waterbased



Part Number	Name
2810 0148 00	Water base lubricator

## Lubricant Food Grade Application



Part Number	Name
2810 0248 00	Lubricant food grade application D

## Drill Bit



Part Number	Name	Diameter
2810 0343 00	Drill Bit for AIRnet Quick Drops D100-D158	D100-D158
2810 0344 00	Drill Bit Holder D100-D158	D100-D158

## Pipe Cutter Electrical



Part Number	Name
2810 0540 80	Pipe Cutter Electrical 220V/230V
2810 0640 80	Pipe Cutter Electrical 110V/120V
2810 0740 00	Pipe Cutter Electrical Spare Cutter Blade

## Belt Spanner



Part Number	Name	Diameter
2810 8028 00	Belt Spanner 40-80 mm (1½" - 3")	40mm-80mm

## Toolbox PF Series



Part Number	Name	Diameter
2811 0045 00	Toolbox PF Series D20-50	20mm-50mm

### CONTENT:

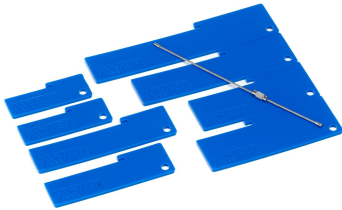
- (1)2811004501 BOX TOOL PF SERIES
- (2)2811102800 TOOL SPANNER D20
- (3)2811202800 TOOL SPANNER D25
- (4)2811402800 TOOL SPANNER D40
- (5)2811502800 TOOL SPANNER D50
- (6)2810014100 TOOL
- (7)2810004200 TOOL DEBURRER HOLE
- (8)2810004000 TOOL
- (9)2810034000 CUTTING RING
- (10)2810014800 TUBE GYMNA CONTACTG
- (11)2810014300 TOOL
- (12)2810024300 TOOL DRIL BIT D24
- (13)2810004400 TOOL
- (14)2810004900 TOOL
- (15)2811014900 TOOL SPANNER L KEY
- (16)2811022990 MARKER PIPE

\*\*QUANTITY: 1 EACH

## Hexagon Allen Key



Part Number	Name	Diameter
2811 0149 00	Hexagon Allen Key 5mm	5mm



## PM Series

Part Number	Name	Diameter
2811 0229 90	Insertion Depth Marker	
2811 7728 90	Spanner PM series Body D80 / Adaptor Union 2 1/2"	
2811 7728 91	Adapter Union Nut Wrench D80 PM Series	63mm



## Pipe Marker

Part Number	Name	Diameter
2811 0229 90-1	Pipe Marker D20-158	20mm-158mm



## Toolbox for Ø 63/3" - 100/4"

Part Number	Name	Diameter
2811 0245 00	Toolbox Ø 63/3" - 100/4" D63-100	63mm-100mm

CONTENT:  
 (1)2811024501 TOOLBOX BIGGER DIAM  
 (2)2811602890 TOOL SPANNER D63  
 (3)2811702890 TOOL SPANNER D80  
 (4)2810004200 TOOL DEBURRER HOLE  
 (5)2810014000 TOOL  
 (6)2810044000 CUTTING RING D48-17  
 (7)2810014800 TUBE GYMNA CONTACTG  
 (8)2811022990 MARKER PIPE  
 (9)2811002880 WRENCH 8439004103 +  
 (10)4027132308 TOOL BIT SOCKET  
 (11)0462360123 HEX. DRIVE SOCKET  
 (12)2810064100 DEBURRER PIPE D50-1  
 \*\*QUANTITY: 1 EACH



## Spanner PF series

Part Number	Name	Diameter
2811 1028 00	Spanner PF series D20	20mm
2811 2028 00	Spanner PF series D25	25mm
2811 4028 00	Spanner PF series D40	40mm
2811 5028 00	Spanner PF series D50	50mm



## Spanner Black Series

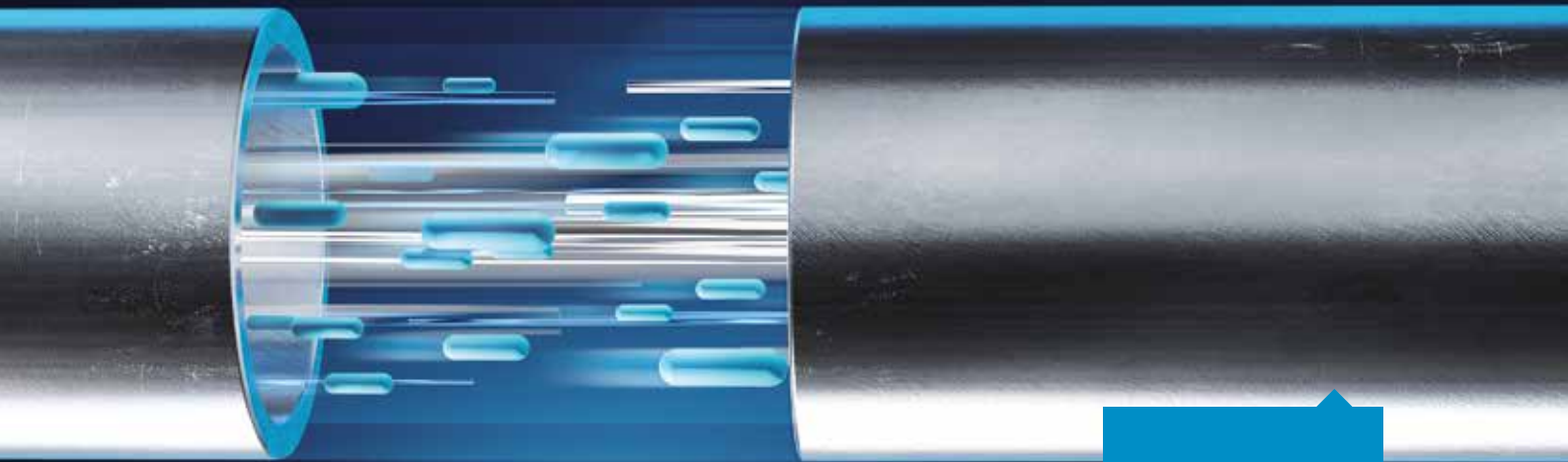
Part Number	Name	Diameter
2811 6028 00	Spanner Black Series D63	63mm
2811 6628 00	Spanner for bodies Black Series D63	63mm
2811 7028 00	Spanner Black Series D80	80mm
2811 7728 00	Spanner for bodies Black Series D80	80mm



## Spanner PM Series

Part Number	Name	Diameter
2811 6028 90	Spanner PM Series D63 Nut	63mm
2811 6628 90	Spanner PM Series body D63	63mm
2811 7028 90	Spanner PM Series D80 Nut	80mm

**AIRNET**



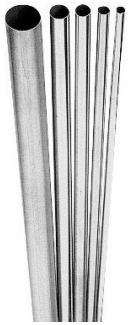
Your processes  
deserve a solid,  
safe and clean  
piping system.

# Stainless Steel

Stainless Steel solutions for  
special applications



# Stainless Steel Piping



## Pipe 304L

Part Number	Name	Diameter	Pipe Length (ft)	Pipe Length (m)
2812 1000 00	Pipe 304L D15 (1/2")	15mm	19	5.7
2812 2000 00	Pipe 304L D28 (1")	28mm	19	5.7
2812 3000 00	Pipe 304L D35 (1 1/4")	35mm	19	5.7
2812 4000 00	Pipe 304L D42 (1 1/2")	42mm	19	5.7
2812 5000 00	Pipe 304L D54 (2")	54mm	19	5.7
2812 6000 00	Pipe 304L D76 (2 3/4")	76mm	19	5.7
2812 7000 00	Pipe 304L D89 (3 1/2")	89mm	19	5.7
2812 8000 00	Pipe 304L D108 (4")	108mm	19	5.7



## Pipe 316L

Part Number	Name	Diameter	Pipe Length (ft)	Pipe Length (m)
2812 1001 00	Pipe 316L D15 (1/2")	15mm	19	5.7
2812 2001 00	Pipe 316L D28 (1")	28mm	19	5.7
2812 4001 00	Pipe 316L D42 (1 1/2")	42mm	19	5.7

# Fittings



## Adapter Union Female ISO228

Part Number	Name	Diameter
2812 1113 00	Adapter Union Female 316L D15x 1/2" ISO228	15mm
2812 2213 00	Adapter Union Female 316L D28x1" ISO228	28mm
2812 3313 00	Adapter Union Female 316L D35x1 1/4" ISO228	35mm
2812 4413 00	Adapter Union Female 316L D42x1 1/2" ISO228	42mm
2812 5513 00	Adapter Union Female 316L D54x2" ISO228	54mm



## Adapter Union Female NPT

Part Number	Name	Diameter
2812 1114 00	Adapter Union Female 316L D15x3/4" NPT	1/2"
2812 2214 00	Adapter Union Female 316L D28x1" NPT	1"
2812 3314 00	Adapter Union Female 316L D35x1 1/4" NPT	1 1/4"
2812 4414 00	Adapter Union Female 316L D42x1 1/2" NPT	1 1/2"
2812 5514 00	Adapter Union Female 316L D54x2" NPT	2"



## Compensator

Part Number	Name	Diameter
2812 1055 00	Compensator 316L D15 (1/2")	15mm
2812 2055 00	Compensator 316L D28 (1")	28mm
2812 3055 00	Compensator 316L D35 (1 1/4")	35mm
2812 4055 00	Compensator 316L D42 (1 1/2")	42mm
2812 5055 00	Compensator 316L D54 (2")	54mm



## Elbow 90°

Part Number	Name	Diameter
2812 1003 02	Elbow 90° 316L D15 (1/2")	15mm
2812 2003 02	Elbow 90° 316L D28 (1")	28mm
2812 3003 00	Elbow 90° 316L D35 (1 1/4")	35mm
2812 4003 00	Elbow 90° 316L D42 (1 1/2")	42mm
2812 5003 00	Elbow 90° 316L D54 (2")	54mm
2812 6003 00	Elbow 90° 316L D76 (2 3/4")	76mm
2812 7003 00	Elbow 90° 316L D89 (3 1/2")	89mm
2812 8003 00	Elbow 90° 316L D108 (4")	108mm



## Elbow 45°

Part Number	Name	Diameter
2812 1004 02	Elbow 45° 316L D15 (1/2")	15mm
2812 2004 02	Elbow 45° 316L D28 (1")	28mm
2812 3004 00	Elbow 45° 316L D35 (1 1/4")	35mm
2812 4004 00	Elbow 45° 316L D42 (1 1/2")	42mm
2812 5004 00	Elbow 45° 316L D54 (2")	54mm
2812 6004 00	Elbow 45° 316L D76 (2 3/4")	76mm
2812 7004 00	Elbow 45° 316L D89 (3 1/2")	89mm
2812 8004 00	Elbow 45° 316L D108 (4")	108mm



## End Cap

Part Number	Name	Diameter
2812 1006 00	End Cap 316L D15 (1/2")	15mm
2812 2006 00	End Cap 316L D28 (1")	28mm
2812 3006 00	End Cap 316L D35 (1 1/4")	35mm
2812 4006 00	End Cap 316L D42 (1 1/2")	42mm
2812 5006 00	End Cap 316L D54 (2")	54mm
2812 6006 00	End Cap 316L D76 (2 3/4")	76mm
2812 7006 00	End Cap 316L D89 (3 1/2")	89mm
2812 8006 00	End Cap 316L D108 (4")	108mm



## Equal Socket (Union)

Part Number	Name	Diameter
2812 1002 00	Equal Socket 316L D15 (1/2")	15mm
2812 2002 00	Equal Socket 316L D28 (1")	28mm
2812 3002 00	Equal Socket 316L D35 (1 1/4")	35mm
2812 4002 00	Equal Socket 316L D42 (1 1/2")	42mm
2812 5002 00	Equal Socket 316L D54 (2")	54mm
2812 6002 00	Equal Socket 316L D76 (2 3/4")	76mm
2812 7002 00	Equal Socket 316L D89 (3 1/2")	89mm
2812 8002 00	Equal Socket 316L D108 (4")	108mm



## Flange DIN PN16

Part Number	Name	Diameter
2812 1054 00	Flange 316L D15 (1/2") DIN PN16	15mm
2812 2054 00	Flange 316L D28 (1") DIN PN16	28mm
2812 3054 00	Flange 316L D35 (1 1/4") DIN PN16	35mm
2812 4054 00	Flange 316L D42 (1 1/2") DIN PN16	42mm
2812 5054 00	Flange 316L D54 (2") DIN PN16	54mm
2812 6054 00	Flange 316L D76 (2 3/4") DIN PN16	76mm
2812 7054 00	Flange 316L D89 (3 1/2") DIN PN16	89mm
2812 8054 00	Flange 316L D108 (4") DIN PN16	108mm

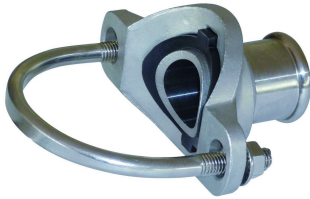


## Flange ANSI CL150

Part Number	Name	Diameter
2812 1154 00	Flange 316L D15 (1/2")	15mm
2812 2154 00	Flange 316L D28 (1")	28mm
2812 3154 00	Flange 316L D35 (1 1/4")	35mm
2812 4154 00	Flange 316L D42 (1 1/2")	42mm
2812 5154 00	Flange 316L D54 (2")	54mm
2812 6154 00	Flange 316L D76 (2 3/4")	76mm
2812 7154 00	Flange 316L D89 (3 1/2")	89mm
2812 8154 00	Flange 316L D108 (4")	108mm

ASME Compatible

## Quick Drop

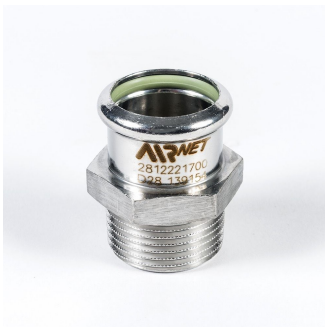


Part Number	Name	Diameter
2812 6310 00	Quick Drop 316L D76xD35	76mmx35mm
2812 7410 00	Quick Drop 316L D89xD42	89mmx42mm
2812 8510 00	Quick Drop 316L D108xD54	108mmx54mm



## Reducer Male x Female

Part Number	Name	Diameter
2812 2121 00	Reducer Male x Female 316L D28xD15 (1"x1/2")	28mm
2812 3221 00	Reducer Male x Female 316L D35xD28 (1 1/4"x1")	35mm
2812 4321 00	Reducer Male x Female 316L D42xD35 (1 1/2"x1 1/4")	42mm
2812 5421 00	Reducer Male x Female 316L D54xD42 (2"x1 1/2")	54mm
2812 6521 00	Reducer Male x Female 316L D76xD54 (2 3/4"x2")	76mm
2812 7621 00	Reducer Male x Female 316L D89xD76 (3 1/2"x2 3/4")	89mm
2812 8721 00	Reducer Male x Female 316L D108xD89 (4"x3 1/2")	108mm



## Nipple Socket Male ISO 7-R

Part Number	Name	Diameter	Thread Outlet
2812 1017 00	Nipple Socket Male 316L D15x1/2" ISO7R	15mm	15mm
2812 1117 00	Nipple Socket Male 316L D15x3/4" ISO7R	15mm	20mm
2812 2117 00	Nipple Socket Male 316L D28x3/4" ISO7R	28mm	20mm
2812 2217 00	Nipple Socket Male 316L D28x1" ISO7R	28mm	25mm
2812 3217 00	Nipple Socket Male 316L D35x1" ISO7R	35mm	25mm
2812 3317 00	Nipple Socket Male 316L D35x1 1/4" ISO7R	35mm	32mm
2812 4317 00	Nipple Socket Male 316L D42x1 1/4" ISO7R	42mm	32mm
2812 4417 00	Nipple Socket Male 316L D42x1 1/2" ISO7R	42mm	40mm
2812 5417 00	Nipple Socket Male 316L D54x1 1/2" ISO7R	54mm	40mm
2812 5517 00	Nipple Socket Male 316L D54x2" ISO7R	54mm	50mm
2812 6617 02	Nipple Socket Male 316L D76x2 1/2" ISO7R	76mm	63mm
2812 7717 02	Nipple Socket Male 316L D89x3" ISO7R	89mm	80mm
2812 8817 00	Nipple Socket Male 316L D108x4" ISO7R	108mm	100mm



## Nipple Socket Male NPT

Part Number	Name	Diameter	Thread Outlet
2812 1018 00	Nipple Socket Male 316L D15x1/2" NPT	1/2"	1/2"
2812 1118 00	Nipple Socket Male 316L D15x3/4" NPT	1/2"	3/4"
2812 2118 00	Nipple Socket Male 316L D28x3/4" NPT	1"	3/4"
2812 2218 00	Nipple Socket Male 316L D28x1" NPT	1"	1"
2812 3218 00	Nipple Socket Male 316L D35x1" NPT	1 1/4"	1"
2812 3318 00	Nipple Socket Male 316L D35x1 1/4" NPT	1 1/4"	1 1/4"
2812 4318 00	Nipple Socket Male 316L D42x1 1/4" NPT	1 1/2"	1 1/4"
2812 4418 00	Nipple Socket Male 316L D42x1 1/2" NPT	1 1/2"	1 1/2"
2812 5418 00	Nipple Socket Male 316L D54x1 1/2" NPT	2"	1 1/2"
2812 5518 00	Nipple Socket Male 316L D54x2" NPT	2"	2"
2812 6618 00	Nipple Socket Male 316L D76x2 1/2" NPT	2 3/4"	2 1/2"
2812 7718 00	Nipple Socket Male 316L D89x3" NPT	3 1/2"	3"
2812 8818 00	Nipple Socket Male 316L D108x4" NPT	4"	4"



## Nipple Socket Female ISO228

Part Number	Name	Diameter	Thread Outlet
2812 1119 00	Nipple Socket Female 316L D15x3/4" ISO228	15mm	20mm
2812 2219 00	Nipple Socket Female 316L D28x1" ISO228	28mm	25mm
2812 3319 00	Nipple Socket Female 316L D35x1 1/4" ISO228	35mm	32mm
2812 4419 00	Nipple Socket Female 316L D42x1 1/2" ISO228	42mm	40mm
2812 5519 00	Nipple Socket Female 316L D54x2" ISO228	54mm	50mm



## Nipple Socket Female NPT

Part Number	Name	Diameter	Thread Outlet
2812 1120 00	Nipple Socket Female 316L D15x3/4" NPT	1/2"	3/4"
2812 2220 00	Nipple Socket Female 316L D28x1" NPT	1"	1"
2812 3320 00	Nipple Socket Female 316L D35x1 1/4" NPT	1 1/4"	1 1/4"
2812 4420 00	Nipple Socket Female 316L D42x1 1/2" NPT	1 1/2"	1 1/2"
2812 5520 00	Nipple Socket Female 316L D54x2" NPT	2"	2"

## Swan Neck

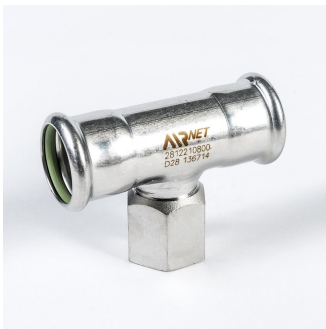


Part Number	Name	Diameter
2812 1067 00	Swan Neck 316L D15 (1/2")	15mm
2812 2067 00	Swan Neck 316L D28 (1")	28mm



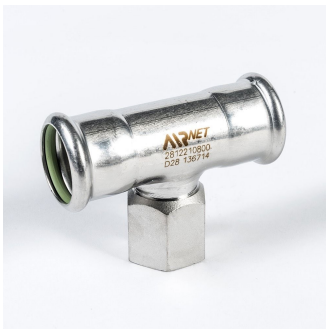
## Equal Tee

Part Number	Name	Diameter
2812 1005 00	Equal Tee 316L D15 (1/2")	15mm
2812 2005 00	Equal Tee 316L D28 (1")	28mm
2812 3005 00	Equal Tee 316L D35 (1 1/4")	35mm
2812 4005 00	Equal Tee 316L D42 (1 1/2")	42mm
2812 5005 00	Equal Tee 316L D54 (2")	54mm
2812 6005 00	Equal Tee 316L D76 (2 3/4")	76mm
2812 7005 00	Equal Tee 316L D89 (3 1/2")	89mm
2812 8005 00	Equal Tee 316L D108 (4")	108mm



## Threaded Reducing Tee ISO228

Part Number	Name	Diameter	Thread Outlet
2812 1008 02	Threaded Reducing Tee 316L D15x1/2" ISO228	15mm	20mm
2812 2108 02	Threaded Reducing Tee 316L D28x3/4" ISO228	28mm	3/4"
2812 3108 00	Threaded Reducing Tee 316L D35x3/4" ISO228	35mm	20mm
2812 4108 00	Threaded Reducing Tee 316L D42x3/4" ISO228	42mm	20mm
2812 5108 00	Threaded Reducing Tee 316L D54x3/4" ISO228	54mm	20mm
2812 6108 00	Threaded Reducing Tee 316L D76x3/4" ISO228	76mm	20mm
2812 7108 00	Threaded Reducing Tee 316L D89x3/4" ISO228	89mm	20mm
2812 8108 00	Threaded Reducing Tee 316L D108x3/4" ISO228	108mm	20mm



## Threaded Reducing Tee NPT

Part Number	Name	Diameter	Thread Outlet
2812 1009 00	Threaded Reducing Tee 316L D15x1/2" NPT	1/2"	1/2"
2812 2109 00	Threaded Reducing Tee 316L D28x3/4" NPT	1"	3/4"
2812 3109 00	Threaded Reducing Tee 316L D35x3/4" NPT	1 1/4"	3/4"
2812 4109 00	Threaded Reducing Tee 316L D42x3/4" NPT	1 1/2"	3/4"
2812 5109 00	Threaded Reducing Tee 316L D54x3/4" NPT	2"	3/4"
2812 6109 00	Threaded Reducing Tee 316L D76x3/4" NPT	2 3/4"	3/4"
2812 7109 00	Threaded Reducing Tee 316L D89x3/4" NPT	3 1/2"	3/4"
2812 8109 00	Threaded Reducing Tee 316L D108x3/4" NPT	4"	3/4"



## Reduction Tee

Part Number	Name	Diameter	Reduced Outlet
2812 2107 00	Reducing Tee 316L D28xD15	28mm	15mm
2812 3207 00	Reducing Tee 316L D35xD28	35mm	28mm
2812 4307 00	Reducing Tee 316L D42xD35	42mm	35mm
2812 5407 00	Reducing Tee 316L D54xD42	54mm	42mm
2812 6507 00	Reducing Tee 316L D76xD54	76mm	54mm
2812 7607 00	Reducing Tee 316L D89xD76	89mm	76mm
2812 8707 00	Reducing Tee 316L D108xD89	108mm	89mm



## Ball Valve

Part Number	Name	Diameter
2812 1051 00	Ball Valve 316L D15 (1/2")	15mm
2812 2051 00	Ball Valve 316L D28 (1")	28mm
2812 3051 00	Ball Valve 316L D35 (1 1/4")	35mm
2812 4051 00	Ball Valve 316L D42 (1 1/2")	42mm
2812 5051 00	Ball Valve 316L D54 (2")	54mm
2812 6051 00	Ball Valve 316L D76 (2 3/4")	76mm
2812 7051 00	Ball Valve 316L D89 (3 1/2")	89mm
2812 8051 00	Ball Valve 316L D108 (4")	108mm



## Wall Mounted Nipple

Part Number	Name	Diameter
2812 1040 00	Wall Mounted Nipple 316L D15x1/2" (1/2"x1/2") ISO228	15mm
2812 1041 00	Wall Mounted Nipple 316L D15x1/2" (1/2"x1/2") NPT	1/2"



# Accessories



## Demobox

Part number	Name
2812 0046 00	Demobox



## Gasket

Part number	Name	Diameter
0650 0100 06 D108	Gasket for Flange D108 PN10-16 / DIN & Flange D108 ANSI CL150	108mm
0650 0100 09	Gasket for Flange D54 PN10-16 / DIN	54mm
0650 0100 43	Gasket for Flange D15 (1/2") PN10-16 / ANSI CL150 & DIN	15mm
0650 0100 99	Gasket for Flange D28 (1") PN10-16 DIN	28mm
0650 0101 06	Gasket for Flange D28 ANSI CL150 & Flange D35 (ANSI)	28mm
0650 1000 87	Gasket for Flange D42 PN10-16 DIN & Flange D54 ANSI	42mm
0650 1001 07	Gasket for Flange D76 PN10-16 DIN & Flange D89 ANSI	76mm
0650 1001 12	Gasket for Flange D35 PN10-16 / DIN & Flange D42 ANSI CL150	35mm
0650 1001 19	Gasket for Flange D76 ANSI CL150	76mm
0650 1001 27 D89	Gasket for Flange D89 PN10-16 / DIN	89mm

Suitable with SS Flange 2812 8054 00 (DIN) & 2812 8154 00 (ANSI)



## O-ring Kit

Part number	Name	Diameter
2812 1065 20	O-ring Kit D15 (1/2")	15mm
2812 2065 20	O-ring Kit D28 (1")	28mm
2812 3065 20	O-ring Kit D35 (1 1/4")	35mm
2812 4065 20	O-ring Kit D42 (1 1/2")	42mm
2812 5065 20	O-ring Kit D54 (2")	54mm
2812 6065 10	O-ring Kit D76 (2 3/4")	76mm
2812 7065 10	O-ring Kit D89 (3 1/2")	89mm
2812 8065 10	O-ring Kit D108 (4")	108mm



## Pipe Clip

Part Number	Name	Diameter
2812 1022 20	Pipe Clip 304L D15 (1/2") M8 20PCS	15mm
2812 2022 20	Pipe Clip 304L D28 (1") M8 20PCS	28mm
2812 3022 20	Pipe Clip 304L D35 (1 1/4") M8 20PCS	35mm
2812 4022 20	Pipe Clip 304L D42 (1 1/2") M8 20PCS	42mm
2812 5022 20	Pipe Clip 304L D54 (2") M8 20PCS	54mm
2812 6022 20	Pipe Clip 304L D76 (2 3/4") M10 20PCS	76mm
2812 7022 20	Pipe Clip 304L D89 (3 1/2") M10 20PCS	89mm
2812 8022 20	Pipe Clip 304L D108 (4") M10 20PCS	108mm



## Pipe Clip UNC

Part Number	Name	Diameter
2812 1122 20	Pipe Clip 304L D15 (1/2") 3/8" UNC 20PCS	1/2"
2812 2122 20	Pipe Clip 304L D28 (1") 3/8" UNC 20PCS	1"
2812 3122 20	Pipe Clip 304L D35 (1 1/4") 3/8" UNC 20PCS	1 1/4"
2812 4122 20	Pipe Clip 304L D42 (1 1/2") 3/8" UNC 20PCS	1 1/2"
2812 5122 20	Pipe Clip 304L D54 (2") 3/8" UNC 20PCS	2"
2812 6122 20	Pipe Clip 304L D76 (2 3/4") 3/8" UNC 20PCS	2 3/4"
2812 7122 20	Pipe Clip 304L D89 (3 1/2") 3/8" UNC 20PCS	3 1/2"
2812 8122 20	Pipe Clip 304L D108 (4") 3/8" UNC 20PCS	4"

## Tools



## Pipe Deburrer

Part Number	Name	Diameter
2810 0041 00 D20-D25	Pipe Deburrer D20 D25	20mm-25mm
2810 0141 00 D20-D25	Pipe Deburrer D20 D50	20mm-50mm
2810 0841 00 D63-D100	Pipe Deburrer D63-D100	63mm-100mm



## Pressing Tool

Part Number	Name	Diameter
2812 0030 00	Tool Press D15-D54 220V	15mm-54mm
2812 0030 01	Tool Press D15-D54 110V	15mm-54mm
2812 0130 00	Tool Press D76-D108 220V	76mm-108mm
2812 0130 01	Tool Press D76-D108 110V	76mm-108mm
2812 0430 01	Tool Charger 110V	
2812 0430 00	Tool Charger 220V	
2812 0230 00	Tool Battery	
2812 0428 01	Tool Cable 110V	
2812 0428 00	Tool Cable 220V	

Including protective case, battery charger, charger cable

## Pipe Marker



Part Number	Name
2812 0029 80	Insertion depth marker



## Pipe Cutter Manual

Part Number	Name	Diameter
2812 0040 00	Pipe Cutter Manual D15-D54	15mm-54mm
2812 0140 00	Cutting wheel for Manual Pipe Cutter D15-D54	15mm-54mm



## Pipe Cutter Electrical 220V (full set)

Part Number	Name	Diameter
2812 0240 80	Pipe Cutter Electrical (full set) 220VV	28mm-108mm



## Pipe Cutter Electrical 220V

Part Number	Name	Diameter
2812 0240 81 220V	Pipe Cutter Electrical 220V D28-D108	28mm-108mm



## Pipe Cutter Electrical 110V (full set)

Part Number	Name	Diameter
2812 0340 80	Pipe Cutter Electrical 110V (full set) D28-D108	28mm-108mm



## Pipe Cutter Electrical 110V

Part Number	Name	Diameter
2812 0640 00	Electrical Cutting Wheel D28-D108	28mm-108mm
2812 0940 00	Spare Rollers	



## Tool Jaw

Part Number	Name	Diameter
2812 1030 00	Tool Jaw D15	15mm
2812 2030 00	Tool Jaw D28	28mm
2812 3030 00	Tool Jaw D35	35mm
2812 4530 00	Tool Adapter D42-D54	42mm
2812 4030 00	Tool Collar D42	42mm
2812 5030 00	Tool Collar D54	54mm
2812 6030 00	Tool Collar D76	76mm
2812 7030 00	Tool Collar D89	89mm
2812 8030 00	Tool Collar D108	108mm

The logo for ARNET, featuring the letters 'AR' in a stylized, bold font followed by 'NET' in a standard sans-serif font, all in white.

ARNET

A detailed illustration of fiber optic technology. On the left, a white and black fiber optic connector is shown with several fibers entering it. On the right, a large bundle of fibers is shown, with two circular cutaway views revealing the internal structure of the fibers. The entire scene is set against a dark blue background with a bright blue light source in the center, creating a sense of depth and focus.

Turnkey  
solutions for  
end-to-end  
production  
efficiency

**Point-of-Use Accessories**

# Filters And Regulators

## Pressure Regulator



Part Number	Name	Diameter
2813 9200 00	Pressure Regulator FRL 1/4" Female	1/4"
2813 9200 01	Pressure Regulator FRL 3/8" Female	3/8"
2813 9200 02	Pressure Regulator FRL 1/2" Female	1/2"
2813 9200 03	Pressure Regulator FRL 3/4" Female	3/4"
2813 9200 04	Pressure Regulator FRL 3/4" Female NPT	3/4"
2813 9200 05	Pressure Regulator FRL 1" Female	1"
2813 9200 06	Pressure Regulator FRL 1" Female	1"

## Filter with Drain



Part Number	Name	Diameter
2813 9200 07	Filter with Drain FRL WS-1/4"f	6mm
2813 9200 08	Filter with Drain FRL WS-3/8"f	9mm
2813 9200 09	Filter with Drain FRL WS-1/2"f	15mm
2813 9200 10	Filter with Drain FRL WS-3/4"f	20mm
2813 9200 11	Filter with Drain FRL WS-3/4" NPT	3/4"
2813 9200 12	Filter with Drain FRL WS-1"f	25mm
2813 9200 13	Filter with Drain FRL WS-1" NPT	1"
2813 9200 36	Filter with Drain FRL WS-1/4" NPT	1/4"
2813 9200 37	Filter with Drain FRL WS-3/8" NPT	3/8"
2813 9200 38	Filter with Drain FRL WS-1/2" NPT	1/2"

Female thread 1/4"

## Filter Regulator (FR)



Part Number	Name	Diameter
2813 9200 14	Filter Regulator 1/4" Female	6mm
2813 9200 15	Filter Regulator 3/8" Female	9mm
2813 9200 16	Filter Regulator 1/2" Female	15mm
2813 9200 17	Filter Regulator 3/4" Female	20mm
2813 9200 18	Filter Regulator 3/4" Female NPT	3/4"
2813 9200 19	Filter Regulator 1" Female	25mm
2813 9200 20	Filter Regulator 1" Female NPT	1"
2813 9200 33	Filter Regulator 1/4" Female NPT	1/4"
2813 9200 34	Filter Regulator 3/8" Female NPT	3/8"
2813 9200 35	Filter Regulator 1/2" Female NPT	1/2"
2813 9200 39	Filter Regulator 1/4" Female NPT	1/4"
2813 9200 40	Filter Regulator 3/8" Female NPT	3/8"
2813 9200 41	Filter Regulator 1/2" Female NPT	1/2"

## Lubricator



Part Number	Name	Diameter
2813 9200 21	Lubricator FRL MO-1/4"f	1/4"
2813 9200 22	Lubricator FRL MO-3/8"f	3/8"
2813 9200 23	Lubricator FRL MO-1/2"f	1/2"
2813 9200 24	Lubricator FRL MO-3/4"f	3/4"
2813 9200 25	Lubricator FRL MO-1"f	1"
2813 9200 42	Lubricator FRL MO-1/4"f NPT	1/4"
2813 9200 43	Lubricator FRL MO-3/8"f NPT	3/8"
2813 9200 44	Lubricator FRL MO-1/2"f NPT	1/2"
2813 9200 45	Lubricator FRL MO-3/4"f NPT	3/4"
2813 9200 46	Lubricator FRL MO-1"f NPT	1"

## Filter Regulator Lubricator (FLR)



Part Number	Name	Diameter
2813 9200 26	Filter Regulator Lubricator FPR-MO 1/4" Female	6mm
2813 9200 27	Filter Regulator Lubricator FPR-MO 3/8" Female	9mm
2813 9200 28	Filter Regulator Lubricator FPR-MO 1/2" Female	15mm
2813 9200 29	Filter Regulator Lubricator FPR-MO 3/4" Female	20mm
2813 9200 30	Filter Regulator Lubricator FPR-MO 3/4" Female NPT	3/4"
2813 9200 31	Filter Regulator Lubricator FPR-MO 1" Female	25mm
2813 9200 32	Filter Regulator Lubricator FPR-MO 1" Female NPT	1"
2813 9200 47	Filter Regulator Lubricator FPR-MO 1/4" Female NPT	1/4"
2813 9200 48	Filter Regulator Lubricator FPR-MO 3/8" Female NPT	3/8"
2813 9200 49	Filter Regulator Lubricator FPR-MO 1/2" Female NPT	1/2"

## Hose Reels



### Manual Hose Reel

Part Number	Name	Pipe Length (ft)	Pipe Length (m)
2813 9500 00	Manual Hose Reel PVC-QRC-U-M-15bar 15-9/20m	32	20



### Automatic Hose Reel

Part Number	Name	Pipe Length (ft)	Pipe Length (m)
2813 9500 01	Automatic Hose Reel QRC-U-M-15bar 14-10/20m	66	20
2813 9500 02	Automatic Hose Reel QRC-U-A-15bar 12-8/9m	30	9
2813 9500 03	Automatic Hose Reel QRC-U-A-15bar 12-8/15m	50	15
2813 9500 04	Automatic Hose Reel QRC-U-A-15bar 12-8/10m	32	10
2813 9500 05	Automatic Hose Reel QRC-U-A-15bar 12-8/15m	50	15
2813 9500 06	Automatic Hose Reel QRC-U-A-15bar 14-10/15m	50	15
2813 9500 07	Automatic Hose Reel QRC-U-A-15bar 18-13/15m	50	15
2813 9500 08	Automatic Hose Reel HR B 18-13/15m	50	15



## Traction Hose Reel



Part Number	Name
2813 9600 00	Traction Hose Reel EQ SST-0,4-1,0kg
2813 9600 01	Traction Hose Reel EQ SST-1,0-2,0kg
2813 9600 02	Traction Hose Reel EQ SST-2,0-3,0kg
2813 9600 03	Traction Hose Reel EQ SST-2,0-4,0kg
2813 9600 04	Traction Hose Reel EQ SST-4,0-6,0kg
2813 9600 05	Traction Hose Reel EQ SST-6,0-8,0kg



## Power and Air Supply Hose Reel

Part number	Name
2813 9600 09	Power and Air Supply Hose Reel EQ EB-PVC-2QRC-SF-15bar-6*230V
2813 9600 10	Power and Air Supply Hose Reel EQ EB-PVC-2QRC-SF-15bar-6*230V-1*400V
2813 9600 11	Power and Air Supply Hose Reel EQ EB-PVC-QRC-SF-12bar-3*230V

## Hoses



### PVC Hose

Part Number	Name	Pipe Length (ft)	Pipe Length (m)
2813 9300 00	PVC Hose QRC-E-15bar 11-6/5m	16	5
2813 9300 01	PVC Hose QRC-E-15bar 11-6/10m	16	10
2813 9300 02	PVC Hose QRC-E-15bar 15-9/5m	16	5
2813 9300 03	PVC Hose QRC-E-15bar 15-9/10m	16	10
2813 9300 04	PVC Hose QRC-E-15bar 18-13/10m	32	10
2813 9300 05	PVC Hose QRC-U-15bar 11-6/5m	16	5
2813 9300 06	PVC Hose QRC-U-15bar 11-6/10m	16	10
2813 9300 07	PVC Hose QRC-U-15bar 15-9/5m	16	5
2813 9300 08	PVC Hose QRC-U-15bar 15-9/10m	16	10
2813 9300 09	PVC Hose QRC-U-15bar 18-13/10m	32	10
2813 9300 10	PVC Hose QRC-E-OR-15bar 15-9/10m	16	10
2813 9300 11	PVC Hose QRC-E-SF-15bar 11-6/5m	16	5
2813 9300 12	PVC Hose QRC-E-SF-15bar 11-6/10m	16	10
2813 9300 13	PVC Hose QRC-E-SF-15bar 15-10/5m	16	5
2813 9300 14	PVC Hose QRC-E-SF-15bar 15-10/10m	32	10
2813 9300 15	PVC Hose 15bar 11-6/25m	80	25
2813 9300 16	PVC Hose 15bar 11-6/50m	160	50
2813 9300 17	PVC Hose 15bar 15-9/25m	80	25
2813 9300 18	PVC Hose 15bar 15-9/50m	160	50
2813 9300 19	PVC Hose 15bar 18-13/25m	80	25
2813 9300 20	PVC Hose 15bar 18-13/50m	160	50
2813 9300 21	PVC Hose OR-15bar 15-9/25m	80	25
2813 9300 22	PVC Hose SF-15bar 11-6/25m	80	25
2813 9300 23	PVC Hose SF-15bar 11-6/50m	160	50
2813 9300 24	PVC Hose SF-15bar 15-10/25m	80	25
2813 9300 25	PVC Hose SF-15bar 15-10/50m	160	50
2813 9300 26	PVC Hose SF-15bar 19-13/25m	80	25



## Rubber Hose

Part Number	Name	Pipe Length (ft)	Pipe Length (m)
2813 9300 27	Rubber Hose H PVC-SF-15bar 19-13/50m	160	50
2813 9300 28	Rubber Hose H PVC-SF-15bar 27-19/25m	80	25
2813 9300 29	Rubber Hose H PVC-SF-15bar 27-19/50m	160	50



## High Pressure PVC Hose

Part Number	Name	Pipe Length (ft)	Pipe Length (m)
2813 9300 30	High Pressure PVC Hose SF-40bar 16-9/50m	160	50
2813 9300 31	High Pressure PVC Hose SF-40bar 21-13/50m	160	50



## Spiral Hose

Part Number	Name	Pipe Length (ft)	Pipe Length (m)
2813 9400 00	Spiral Hose PA-QRC-E-8bar 8-6/5m	16	5
2813 9400 01	Spiral Hose PA-QRC-E-8bar 8-6/7,5m	25	7.5
2813 9400 02	Spiral Hose PA-QRC-E-8bar 8-6/15m	50	15
2813 9400 03	Spiral Hose PA-QRC-E-8bar 10-8/10m	16	10
2813 9400 04	Spiral Hose PA-QRC-E-8bar 8-6/5m	16	5
2813 9400 05	Spiral Hose PA-QRC-E-8bar 8-6/10m	32	10
2813 9400 06	Spiral Hose PA-QRC-E-8bar 8-6/15m	50	15
2813 9400 07	Spiral Hose PA-BJ-8bar 8-6/5m	16	5
2813 9400 08	Spiral Hose PA-BJ-8bar 8-6/10m	32	10
2813 9400 09	Spiral Hose PA-BJ-8bar 8-6/15m	50	15
2813 9400 10	Spiral Hose PUR-QRC-E-8bar 10-6,5/6m	20	6
2813 9400 11	Spiral Hose PUR-QRC-E-8bar 10-6,5/7,5m	25	7.5
2813 9400 12	Spiral Hose PUR-QRC-E-8bar 12-8/6m	20	6
2813 9400 13	Spiral Hose PUR-QRC-E-8bar 12-8/7,5m	25	7.5
2813 9400 14	Spiral Hose PUR-Rp3/8-8bar 10-6,5/7,5m	25	7.5
2813 9400 15	Spiral Hose PUR-8bar 12-8/7,5m	25	7.5
2813 9400 16	Spiral Hose PUR-8bar 16-10/5m	16	5
2813 9400 17	Spiral Hose PUR-8bar 16-10/10m	32	10

# Quick Release And Connectors



## Connectors

Part number	Name	Diameter	Thread Outlet
2813 9100 00	Connector PN-S-E-1/4"m	1/4"	
2813 9100 01	Connector PN-S-E-3/8"m	3/8"	
2813 9100 02	Connector PN-S-E-1/2"m	1/2"	
2813 9100 03	Connector PN-S-E-1/4"f	1/4"	
2813 9100 04	Connector PN-S-E-3/8"f	3/8"	
2813 9100 05	Connector PN-S-E-1/2"f	1/2"	
2813 9100 06	Connector PN-S-E-6mm	6mm	
2813 9100 07	Connector PN-S-E-9mm	9mm	
2813 9100 08	Connector PN-S-E-13mm	13mm	
2813 9100 38	Connector PN-E-6mm	6mm	
2813 9100 39	Connector PN-E-9mm	9mm	
2813 9100 40	Connector PN-E-13mm	13mm	
2813 9100 41	Connector PN-E-1/4"m	1/4"	
2813 9100 42	Connector PN-E-3/8"m	3/8"	
2813 9100 43	Connector PN-E-1/2"m	1/2"	
2813 9100 44	Connector PN-E-1/4"f	1/4"	
2813 9100 45	Connector PN-E-3/8"f	3/8"	
2813 9100 46	Connector PN-E-1/2"f	1/2"	
2813 9100 47	Connector HC-U-11-13mm	11mm-13mm	
2813 9100 48	Connector HC-U-13-15mm	13mm-15mm	
2813 9100 49	Connector HC-U-15-18mm	15mm-18mm	
2813 9100 50	Connector SC-U-10-16mm	10mm-16mm	
2813 9100 51	Connector SC-U-12-20mm	12mm-20mm	
2813 9100 52	Connector SC-U-16-25mm	16mm-25mm	
2813 9100 53	Connector SC-U-20-32mm	20mm-32mm	
2813 9100 54	Connector HN-U-1/4"m x 6mm	1/4"	
2813 9100 55	Connector HN-U-1/4"m x 9mm	1/4"	
2813 9100 56	Connector HN-U-3/8"m x 6mm	3/8"	
2813 9100 57	Connector HN-U-3/8"m x 9mm	3/8"	3/8"
2813 9100 58	Connector HN-U-3/8"m x 13mm	3/8"	
2813 9100 59	Connector HN-U-1/2"m x 6mm	1/2"	
2813 9100 60	Connector HN-U-1/2"m x 9mm	1/2"	
2813 9100 61	Connector HN-U-1/2"m x 13mm	1/2"	
2813 9100 62	Connector HN-U-1/4"f x 6mm	1/4"	
2813 9100 63	Connector HN-U-1/4"f x 9mm	1/4"	
2813 9100 64	Connector HN-U-3/8"f x 6mm	3/8"	
2813 9100 65	Connector HN-U-3/8"f x 9mm	3/8"	
2813 9100 66	Connector HN-U-1/2"f x 9mm	1/2"	
2813 9100 67	Connector HN-U-1/2"f x 13mm	1/2"	
2813 9100 68	Connector HOC-U-6mm	6mm	
2813 9100 69	Connector HOC-U-9mm	9mm	
2813 9100 70	Connector DN-U-1/4"m x 1/8"m	1/4"	
2813 9100 71	Connector DN-U-1/4"m x 1/4"m	1/4"	
2813 9100 72	Connector DN-U-3/8"m x 1/4"m	3/8"	
2813 9100 73	Connector DN-U-3/8"m x 3/8"m	3/8"	
2813 9100 74	Connector DN-U-1/2"m x 3/8"m	1/2"	
2813 9100 75	Connector DN-U-1/2"m x 1/2"m	1/2"	
2813 9100 76	Connector RE-U-1/4"m x 1/8"f	1/4"	
2813 9100 77	Connector RE-U-3/8"m x 1/4"f	3/8"	
2813 9100 78	Connector RE-U-1/2"m x 3/8"f	1/2"	
2813 9100 79	Connector RN-U-1/4"m x 3/8"f	1/4"	
2813 9100 80	Connector RN-U-3/8"m x 1/2"f	3/8"	
2813 9100 81	Connector MU-1/4"f	1/4"	
2813 9100 82	Connector MU-3/8"f	3/8"	
2813 9100 83	Connector MU-1/2"f	1/2"	

## Quick Releases



Part Number	Name	Diameter
2813 9100 09	Quick Release C QRC-S-E-1/4"m	1/4"
2813 9100 10	Quick Release C QRC-S-E-3/8"m	3/8"
2813 9100 11	Quick Release C QRC-S-E-1/2"m	1/2"
2813 9100 12	Quick Release C QRC-S-E-1/4"f	1/4"
2813 9100 13	Quick Release C QRC-S-E-3/8"f	3/8"
2813 9100 14	Quick Release C QRC-S-E-1/2"f	1/2"
2813 9100 15	Quick Release C QRC-S-E-6mm	6mm
2813 9100 16	Quick Release C QRC-S-E-9mm	9mm
2813 9100 17	Quick Release C QRC-S-E-13mm	13mm
2813 9100 18	Quick Release C QRC-SF-E-1/4"m	1/4"
2813 9100 19	Quick Release C QRC-SF-E-3/8"m	3/8"
2813 9100 20	Quick Release C QRC-SF-E-1/2"m	1/2"
2813 9100 21	Quick Release C QRC-SF-E-1/4"f	1/4"
2813 9100 22	Quick Release C QRC-SF-E-3/8"f	3/8"
2813 9100 23	Quick Release C QRC-SF-E-1/2"f	1/2"
2813 9100 24	Quick Release C QRC-SF-E-6mm	6mm
2813 9100 25	Quick Release C QRC-SF-E-9mm	9mm
2813 9100 26	Quick Release C QRC-SF-E-13mm	13mm
2813 9100 27	Quick Release C QRC-E-1/4"m	1/4"
2813 9100 28	Quick Release C QRC-E-3/8"m	3/8"
2813 9100 29	Quick Release C QRC-E-1/2"m	1/2"
2813 9100 30	Quick Release C QRC-E-1/4"f	1/4"
2813 9100 31	Quick Release C QRC-E-3/8"f	3/8"
2813 9100 32	Quick Release C QRC-E-1/2"f	1/2"
2813 9100 33	Quick Release C QRC-E-6mm	6mm
2813 9100 34	Quick Release C QRC-E-9mm	9mm
2813 9100 35	Quick Release C QRC-E-13mm	13mm
2813 9100 36	Quick Release C 2QRC-E-3/8"f	3/8"
2813 9100 37	Quick Release C 3QRC-E-3/8"f	3/8"
2813 9100 84	Quick Release C QRC-U-1/4"m	1/4"
2813 9100 85	Quick Release C QRC-U-3/8"m	3/8"
2813 9100 86	Quick Release C QRC-U-1/2"m	1/2"
2813 9100 87	Quick Release C QRC-U-1/4"f	1/4"
2813 9100 88	Quick Release C QRC-U-3/8"f	3/8"
2813 9100 89	Quick Release C QRC-U-1/2"f	1/2"
2813 9100 90	Quick Release C QRC-U-6mm	6mm
2813 9100 91	Quick Release C QRC-U-9mm	9mm
2813 9100 92	Quick Release C QRC-U-13mm	13mm

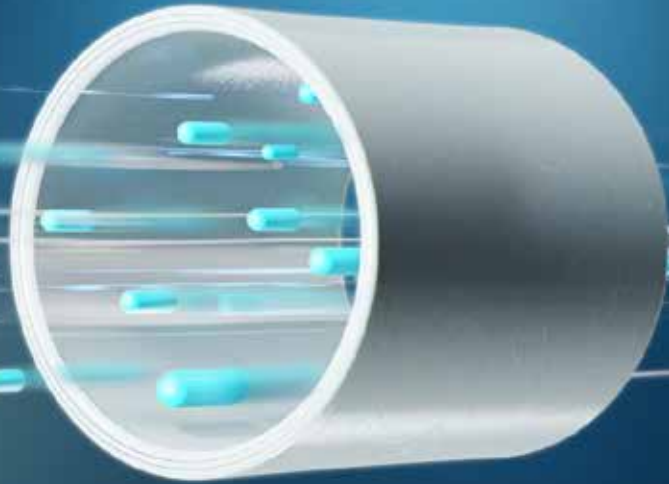
## Socket Boxes



### Socket Box

Part Number	Name	Number of Outlets	Outlet Size	Thread Outlet
2813 0025 05	Socket Box Alu 4x3/4 - 1/2	4	1/2"	1/2"
2813 0025 80	Socket Box 2x1/2	2	1/2"	1/2"
2813 0025 81	Socket Box 3x1/2	3	1/2"	1/2"
2813 0025 82	Socket Box 4x1/2	4	1/2"	1/2"
2813 0025 83	Socket Box 6x1/2	6	1/2"	1/2"
2813 0026 80	Socket Box Top 2x1/2	2	1/2"	1/2"
2813 0026 81	Socket Box Top 3x1/2	3	1/2"	1/2"
2813 0026 82	Socket Box Top 4x1/2	4	1/2"	1/2"
2813 0027 00	Socket Box Mini 3/8 - 1/2		1/2"	1/2"
2813 0027 01	Socket Box Mini 2x3/8 - 1/2	2	1/2"	1/2"
2813 0027 02	Socket Box Mini 3/8 - 2x1/2	3	1/2"	1/2"

**AIRNET**



Polyamide  
piping for  
pneumatic tools

**Polyamide**

## Polyamide Piping



## Fittings



### PA Pipe Straight

Part Number	Name	Diameter	Pipe Length (ft)	Pipe Length (m)
2813 1000 00	PA Pipe Straight D15 5,7m	15mm	19	5.7
2813 2000 00	PA Pipe Straight D18 5,7m	18mm	19	5.7
2813 3000 00	PA Pipe Straight D22 5,7m	22mm	19	5.7
2813 4000 00	PA Pipe Straight D28 5,7m	28mm	19	5.7

### PA Roll

Part Number	Name	Diameter	Pipe Length (ft)	Pipe Length (m)
2813 1100 00	PA Roll D15 25m	15mm	80	25
2813 1200 00	PA Roll D15 10m	15mm	32	10
2813 1300 00	PA UV Roll D15 25m	15mm	80	25
2813 2100 00	PA Roll D18 25m	18mm	80	25
2813 2200 00	PA Roll D18 10m	18mm	32	10
2813 2300 00	PA Roll UV D18 25m	18mm	80	25
2813 3100 00	PA Roll D22 25m	22mm	80	25
2813 3300 00	PA UV Roll D22 25m	22mm	80	25
2813 4100 00	PA Roll D28 25m	28mm	80	25

### PA UV Straight Pipe

Part Number	Name	Diameter	Pipe Length (ft)	Pipe Length (m)
2813 3200 00	PA UV Straight Pipe D22 5,7m	22mm	19	5.7

### Pipe End Adapter

Part Number	Name	Diameter
2813 3162 80	Pipe End Adapter D22-D15	22mm-15mm
2813 3262 80	Pipe End Adapter D22-D18	22mm-18mm
2813 4262 80	Pipe End Adapter D28-D18	28mm-18mm
2813 4362 80	Pipe End Adapter D28-D22	28mm-22mm



## Elbow 90°

Part Number	Name	Diameter
2813 1003 80	Elbow 90° D15	15mm
2813 1003 81	Elbow 90° D15 Male ISO7R 1/2"	15mm
2813 2003 80	Elbow 90° D18	18mm
2813 2003 81	Elbow 90° D18 Male ISO7R 1/2"	18mm
2813 3003 80	Elbow 90° D22	22mm
2813 3103 81	Elbow 90° D22 Male ISO7R 3/4"	22mm
2813 4003 80	Elbow 90° D28	28mm
2813 4203 81	Elbow 90° D28 Male ISO7R 1"	28mm



## Elbow 45°

Part Number	Name	Diameter
2813 1004 80	Elbow 45° D15	15mm
2813 2004 80	Elbow 45° D18	18mm
2813 3004 80	Elbow 45° D22	22mm
2813 4004 80	Elbow 45° D28	28mm



## End Cap

Part Number	Name	Diameter
2813 1006 80	End Cap D15	15mm
2813 2006 80	End Cap D18	18mm
2813 3006 80	End Cap D22	22mm
2813 4006 80	End Cap D28	28mm



## Equal Socket (Union)

Part Number	Name	Diameter
2813 1002 80	Equal Socket D15 (Union)	15mm
2813 2002 80	Equal Socket D18 (Union)	18mm
2813 3002 80	Equal Socket D22 (Union)	22mm
2813 4002 80	Equal Socket D28 (Union)	28mm



## Sliding Equal Socket (Union)

Part Number	Name	Diameter
2813 1002 81	Sliding Equal Socket D15 (Union)	15mm
2813 2002 81	Sliding Equal Socket D18 (Union)	18mm
2813 3002 81	Sliding Equal Socket D22 (Union)	22mm
2813 4002 81	Sliding Equal Socket D28 (Union)	28mm





### Nipple Socket Male ISO7R

Part Number	Name	Diameter	Thread Outlet
2813 1017 80	Nipple Socket Male ISO7R D15 1/2"	15mm	15mm
2813 2017 80	Nipple Socket Male ISO7R D18 1/2"	18mm	15mm
2813 2117 80	Nipple Socket Male ISO7R D18 3/4"	18mm	20mm
2813 3017 80	Nipple Socket Male ISO7R D22 1/2"	22mm	15mm
2813 3117 80	Nipple Socket Male ISO7R D22 3/4"	22mm	20mm
2813 4217 80	Nipple Socket Male ISO7R D28 1"	28mm	25mm



### Nipple Socket Female ISO228

Part Number	Name	Diameter	Thread Outlet
2813 1019 80	Nipple Socket Female ISO228 D15 1/2"	15mm	15mm
2813 2019 80	Nipple Socket Female ISO228 D18 1/2"	18mm	15mm
2813 2119 80	Nipple Socket Female ISO228 D18 3/4"	18mm	20mm
2813 3019 80	Nipple Socket Female ISO228 D22 1/2"	22mm	15mm
2813 3119 80	Nipple Socket Female ISO228 D22 3/4"	22mm	20mm
2813 4219 80	Nipple Socket Female ISO228 D28 1"	28mm	25mm



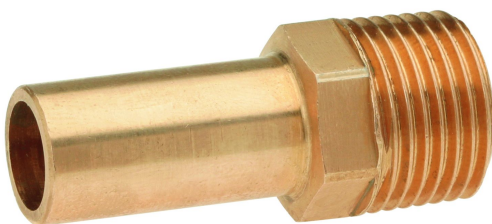
### Equal Tee

Part Number	Name	Diameter
2813 1005 80	Equal Tee D15	15mm
2813 2005 80	Equal Tee D18	18mm
2813 3005 80	Equal Tee D22	22mm
2813 4005 80	Equal Tee D28	28mm



### Reduction Tee

Part Number	Name	Diameter	Reduced Outlet
2813 3107 80	Reduction Tee D22 D15 D22	22mm 15mm	15mm
2813 3207 80	Reduction Tee D22 D18 D22	22mm 18mm	18mm
2813 4207 80	Reduction Tee D28 D18 D28	28mm 18mm	22mm
2813 4307 80	Reduction Tee D28 D22 D28	28mm 22mm	22mm
2813 4307 81	Reduction Tee D28 D22 D22	28mm 22mm	28mm



### Threaded Adapter.

Part Number	Name	Diameter
2813 1013 00	Threaded Adapter D15 Male ISO7R 1/2"	15mm
2813 2013 00	Threaded Adapter D18 Male ISO7R 1/2"	18mm
2813 2113 00	Threaded Adapter D18 Male ISO7R 3/4"	18mm
2813 3013 00	Threaded Adapter D22 Male ISO7R 1/2"	22mm
2813 3113 00	Threaded Adapter D22 Male ISO7R 3/4"	22mm
2813 4213 00	Threaded Adapter D28 Male ISO7R 1"	28mm

## Tools



### Hanger Bolt for Pipe Clamps

Part number	Name
2813 0022 00	Hanger Bolt for Pipe Clamps



### Disassembly Pliers

Part number	Name	Diameter
2813 1028 00	Disassembly Pliers D15	15mm
2813 2028 00	Disassembly Pliers D18	18mm
2813 3028 00	Disassembly Pliers D22	22mm
2813 4028 00	Disassembly Pliers D28	28mm



### Disassembly Clip

Part number	Name	Diameter
2813 1128 00	Disassembly Clip D15	15mm
2813 2228 00	Disassembly Clip D18	18mm
2813 3328 00	Disassembly Clip D22	22mm
2813 4428 00	Disassembly Clip D28	28mm



### Pipe Deburrer Rigid

Part number	Name	Diameter
2810 0041 00	Pipe Deburrer Rigid Plastic D20-50	20mm-25mm

Plastic



### Marking and Deburring Tool

Part number	Name
2813 0240 00	Marking and Deburring Tool



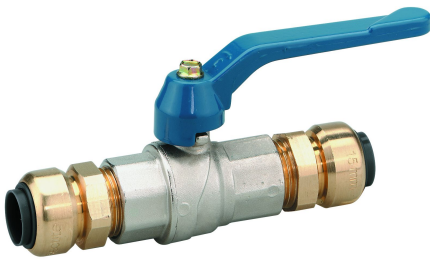
## Deburring Blade

Part Number	Name
2813 0640 00	Deburring Blade



## Shear

Part Number	Name
2813 0040 00	Shear
2813 0140 00	Spare Blades Shear 2 pieces



## Ball Valve

Part number	Name	Diameter
2813 1051 80	Ball Valve D15	15mm
2813 2051 80	Ball Valve D18	18mm
2813 3051 80	Ball Valve D22	22mm
2813 4051 80	Ball Valve D28	28mm



## Anti-friction Agent

Part number	Name
2813 0740 00	Anti-friction Agent

## Pipe Support



## Pipe Clamp

Part number	Name	Diameter
2813 1222 00	Pipe Clamp D15-D18	15mm-18mm
2813 3322 00	Pipe Clamp D22	22mm
2813 4422 00	Pipe Clamp D28	28mm



## Pipe Clip

Part number	Name	Diameter
2813 1022 00	Pipe Clip D15	15mm
2813 2022 00	Pipe Clip D18	18mm
2813 3022 00	Pipe Clip D22	22mm
2813 4022 00	Pipe Clip D28	28mm



Guarantee  
**10**  
years

In line with the high quality performance of the AIRnet product range, we provide our customers with a 10 year guarantee.

## To achieve the lowest Total Cost of Ownership

- ✓ High quality materials
- ✓ Optimal operational performance
- ✓ Low operational costs
- ✓ Low installation costs
- ✓ Low modification costs
- ✓ Safety

# AIRNET

Preserving the power of air

Your Dealer

---

[www.airnet-system.com](http://www.airnet-system.com)