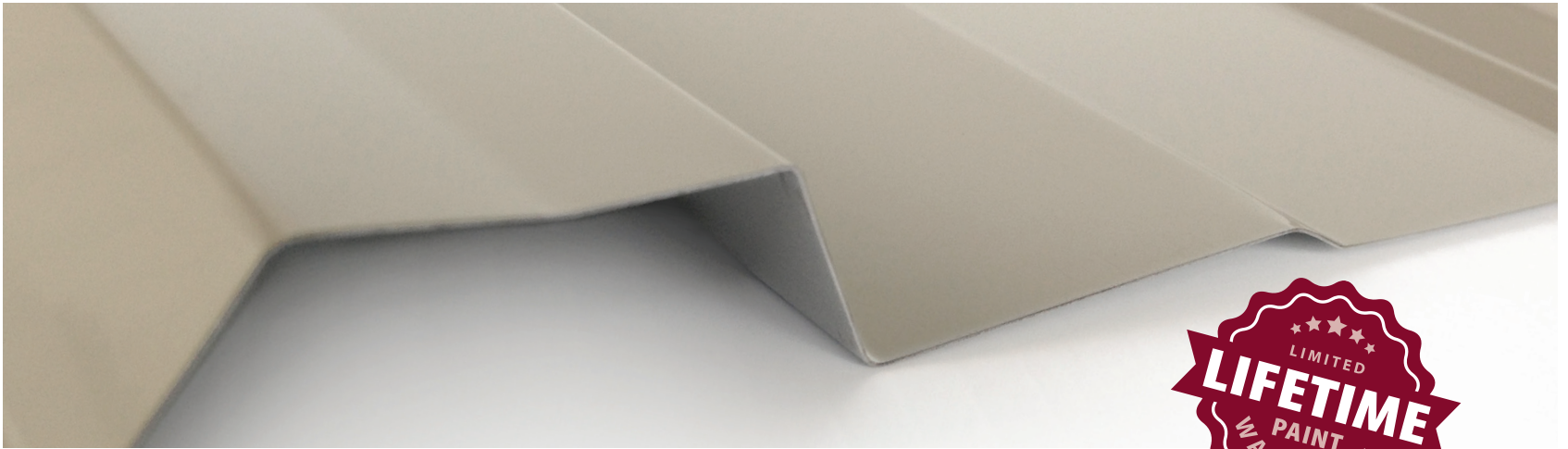


CD 2000®

Wall and Roof Panel



A traditional panel engineered to last for decades

CD 2000 is a proven choice for roofing and siding applications. The board-and-batten appearance provides both an attractive and cost effective option for a wide variety of agricultural, recreational, and light commercial uses.

- Wide fastening surfaces make fastening quick and easy.
- Engineered with a Siphon Groove to minimize leaks.
- Matching trims and accessories are available.



RECOMMENDED
3:12
PITCH
AND ABOVE

29
OR
26
GAUGE

36"
OVERALL
COVERAGE

5/8"
MAXIMUM
RIB HEIGHT

Choose CentralGuard® for the best protection and a lifetime warranty.

CentralGuard is our specific combination of everything that goes into making the highest-quality metal panels. Available on our Prime and Ultra panels, the CentralGuard name is a guarantee that you have the best protection and a lifetime paint warranty.

Choose CentralGuard for the perfect balance of fade protection, rust blocking, and dent resistance.

	STANDARD	PRIME G90 CentralGuard	PRIME CentralGuard	ULTRA CentralGuard
FADE PROTECTION				
Paint Warranty	40-YEAR	LIFETIME	LIFETIME	LIFETIME
Paint Thickness	THICK .90 mil	THICKER 1.0 mil	THICKER 1.0 mil	THICKER 1.0 mil
Fade Protection	✓	✓✓	✓✓	✓✓
Fade Warranty	30-YEAR	30-YEAR	30-YEAR	30-YEAR
RUST BLOCKING				
Advanced Rust Blocking	-	✓	✓	✓
Perforation Warranty	-	-	50-YEAR	50-YEAR
Substrate Thickness	1.12 mil	1.53 mil	1.60 mil	1.60 mil
Substrate Coating	varies	Galvanized	Galvalume	Galvalume
DENT RESISTANCE				
Advanced Dent Resistance	-	✓	✓	✓✓
Steel Thickness	THIN	THICK	THICK	THICKEST
Steel Gauge	29 ga.	29 ga.	29 ga.	26 ga.

CD 2000 features UL2218 approval for impact resistance and may qualify for a homeowners insurance discount. See your local insurance agent for qualifications.



MINIMUM SPECIFICATIONS FOR ULTRA AND PRIME PAINTED PANELS

GAUGE

Ultra 26 ga. | Prime 29 ga.

STEEL THICKNESS

Ultra 0.0185" | Prime 0.0150"

PAINT THICKNESS

Top coat paint: .70 mil
Top coat primer: .30 mil
Bottom coat backer: .35 mil
Bottom coat primer: .35 mil

TOTAL THICKNESS

Ultra 0.0202" | Prime 0.0167"

RUST PROTECTANT SUBSTRATE

Galvalume® AZ50 or Galvanized G90

STEEL STRENGTH

80,000 PSI min

PAINT SYSTEM

SMP

WARRANTY

Lifetime limited paint adhesion
30-yr. chalk and fade
50-yr. Galvalume perforation

TESTING & APPROVALS

APPROVALS

UL2218 UL Approval,
Impact Resistance, Class 4

UL790 UL Approval,
Fire Resistance, Class A