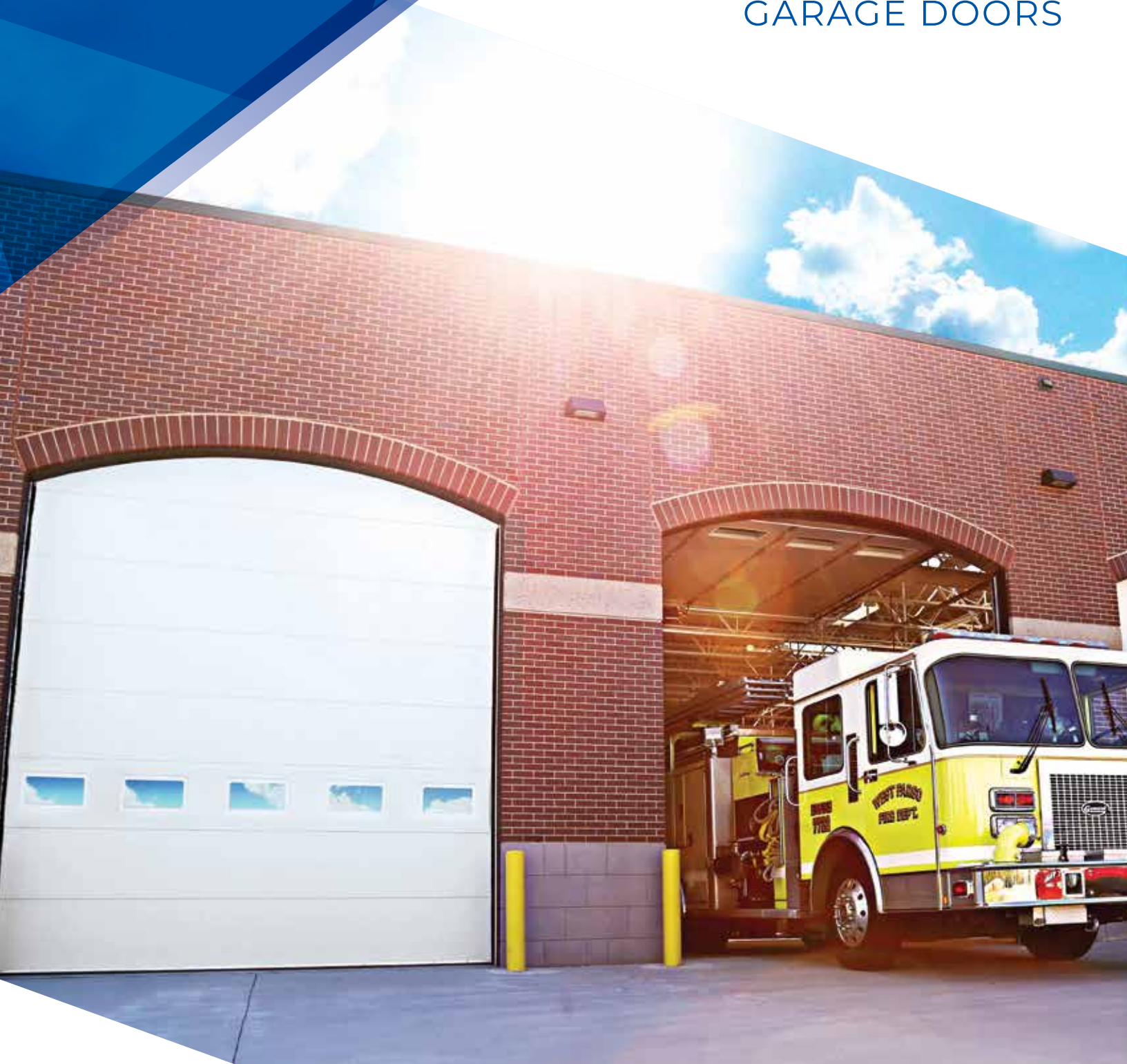


# COMMERCIAL

GARAGE DOORS





# Commercial ThermoGuard™

UNCOMPROMISING QUALITY & STRENGTH

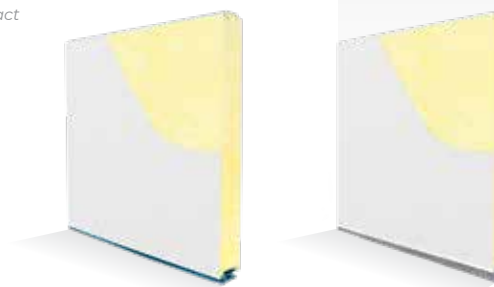
- Best thermal performance in the industry
- Polyurethane provides additional support and rigidity
- The thicker and denser insulation will decrease noise and vibrations



## CHOOSE YOUR OPTIONS

INSULATION	3-Inch ThermoGuard™	2-Inch ThermoGuard™
Foam/Insulate	Polyurethane	Polyurethane
R-Value	26.0	18.0
U-Factor (Btu/hr/ft <sup>2</sup> /F)	0.114	0.136
Thickness	3 inches	2 inches
Maximum Width	40 ft. 2 In.	32 ft. 2 in.
Exterior Steel	27 gauge <i>20 gauge upgrade, white only</i>	27 gauge <i>20 gauge upgrade, white only</i>
Interior Steel	27 gauge	27 gauge
Warranty* Excludes Springs	10 years	10 years

\*For full warranty details contact your Midland dealer



### COLORS



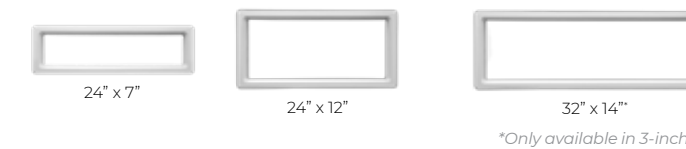
\*ColorSelect™ uses Sherwin Williams Polane® Solar Reflective Polyurethane Enamel, providing a durable, heat-repelling coating.

### GLASS



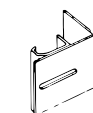
\*Tempered only. All other glass is available in both tempered and untempered.

### WINDOWS

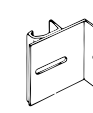


\*Only available in 3-inch

### TRACK MOUNTING

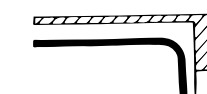


**Reverse Angle Mounted Track**  
Continuous leg-in angle to attach to steel jambs

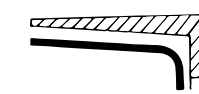


**Angle Mounted Track**  
Continuous leg-out angle used on larger doors to attach to wood jambs

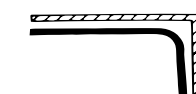
### TRACK CONFIGURATIONS



**Standard Lift**  
For normal installations



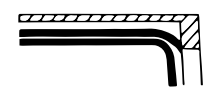
**Inclined Track**  
To follow pitch of roof



**Hi-Lift**  
To put horizontal track as close to ceiling as possible



**Vertical Lift**  
Full vertical rise where headroom is available



**Low Headroom**  
For low-clearance installations





# Commercial EnergySaver™

## SIMPLICITY & HEAVY-DUTY RELIABILITY

- Over 30 years of proven quality and durability
- Pre-formed polystyrene offers consistent fit and finish over time
- Closed-cell extruded polystyrene is perfect for high moisture environments



## CHOOSE YOUR OPTIONS

INSULATION	3-Inch EnergySaver™	2-Inch EnergySaver™
Foam/Insulate	Extruded closed-cell polystyrene	Polystyrene
R-Value	17.05	9.25
U-Factor (Btu/hr/ft <sup>2</sup> /F)	0.145	0.220
Thickness	3 inches	2 inches
Maximum Width	40 ft. 2 In.	24 ft. 2 in.
Exterior Steel	25 gauge <i>20 gauge upgrade, white only</i>	25 gauge <i>20 gauge upgrade, white only</i>
Interior Steel	25 gauge	25 gauge
Warranty* Excludes Springs <i>*For full warranty details contact your Midland dealer</i>	10 years	10 years

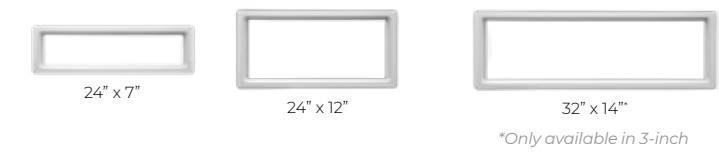


### COLORS



*\*ColorSelect™ uses Sherwin Williams Polane® Solar Reflective Polyurethane Enamel, providing a durable, heat-repelling coating.*

### WINDOWS

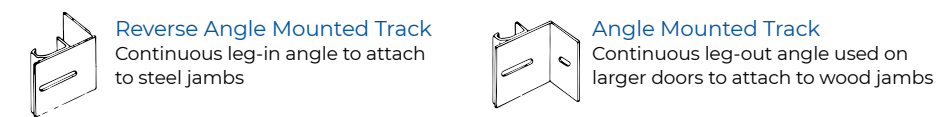


### GLASS

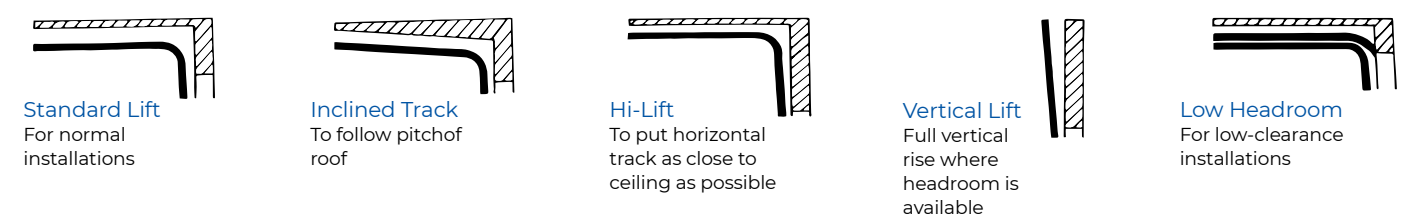


*\*Tempered only. All other glass is available in both tempered and untempered.*

### TRACK MOUNTING



### TRACK CONFIGURATIONS







# FullView & FullView Stylist

NATURAL LIGHT WITH STRENGTH & STABILITY

- Maximizes the amount of light in your space
- Modern, upscale style with a variety of options
- Offers optional insulated rails



## CHOOSE YOUR OPTIONS

SPECIFICATIONS	Stylist	FullView Glass Panel	FullView Anodized Aluminum Panel
Frame	6063-T Aluminum	6063-T Aluminum	6063-T Aluminum
Thickness	2 inches	2 inches	2 inches
Glass	½ inch insulated ¾ inch insulated	½ inch insulated ¾ inch non-insulated ⅞ inch non-insulated	—
Panel	—	—	½ inch insulated
Rails	Insulated non-insulated	Insulated non-insulated	Insulated non-insulated
Air Infiltration Seal	•	•	•
Warranty* Excludes Springs <small>*For full warranty details contact your Midland dealer</small>	5 years	5 years	5 years



### FRAME COLORS



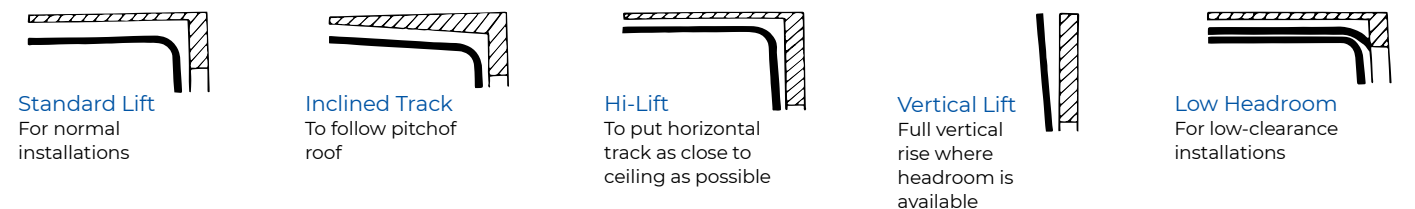
\*ColorSelect™ uses Sherwin Williams Polane® Solar Reflective Polyurethane Enamel, providing a durable, heat-repelling coating.

### GLASS



\*Stylist is only available in Plain & Frosted.  
\*\*Tempered only. All other glass is available in both tempered and untempered.

### TRACK CONFIGURATIONS







## CS20 • CS24 CS26 Ribbed

### DURABLE ROLL-FORMED STEEL

- Entry level door that doesn't sacrifice quality
- Options for 20, 24, or 26 gauge thick steel to meet various project standards
- CS20 and CS24 doors are spot welded by hand for greater structural integrity



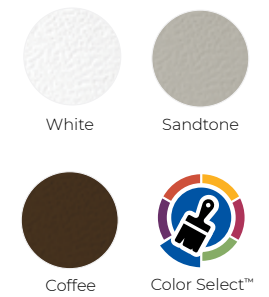
## CHOOSE YOUR OPTIONS

INSULATION	CS20	CS24	CS26
Foam/Insulate	Plain Steel/ T-Bond	Plain Steel/ T-Bond	Plain Steel/ T-Bond
R-Value	T-Bond: 7.0	T-Bond: 7.0	T-Bond: 7.0
U-Factor (Btu/hr/ft <sup>2</sup> /F)	0.376	0.376	0.376
Thickness	2 inches	2 inches	2 inches
Maximum Width	40 ft 2 in	26 ft 2 in	16 ft 2 in
Exterior Steel	20 gauge	24 gauge	26 gauge
Warranty* Excludes Springs	10 years	10 years	25 years

\*For full warranty details contact your Midland dealer



### COLORS



\*ColorSelect™ uses Sherwin Williams Polane® Solar Reflective Polyurethane Enamel, providing a durable, heat-repelling coating.

### WINDOWS



\*Only available in 3-inch

### GLASS

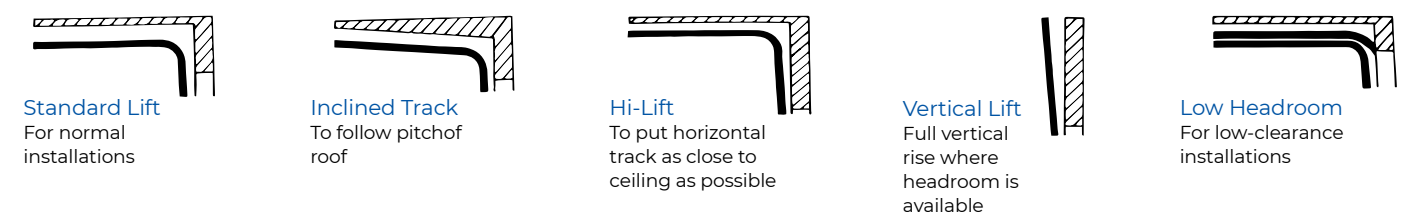


\*Tempered only. All other glass is available in both tempered and untempered.

### TRACK MOUNTING



### TRACK CONFIGURATIONS





# A Superior Door

## Inside & Out

### Improve Your Door With A Package Upgrade

#### HARSH ENVIRONMENT

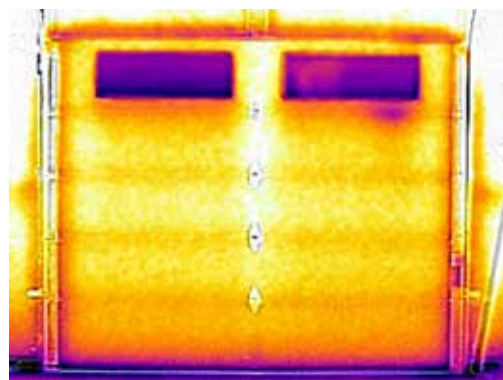
This package includes our toughest components to effectively stand up to Mother Nature.

- Corrosion-resistant rollers
- Galvanized spring wire
- Zinc-plated shafts
- Stainless steel cables
- 11-gauge heavy-duty hinges
- 4<sup>3</sup>/<sub>8</sub>-inch shielded bearings on ends & center

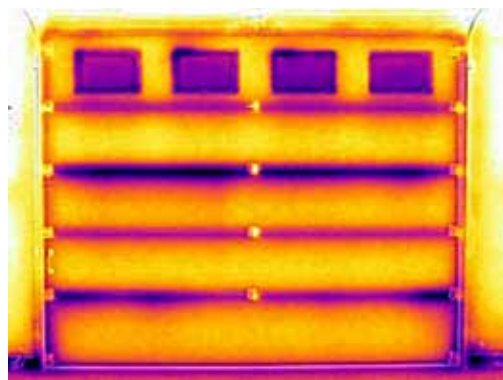
#### HEAVY-DUTY HARDWARE

This package includes our durable heavy-duty hardware. Best of all, these components come standard on doors 30-feet-3-inches wide and larger.

- One-piece Triple End Stile hinges
- Grease zerks
- 5<sup>1</sup>/<sub>8</sub>-inch rollers



MIDLAND GARAGE DOOR MFG CO ThermoGuard™ Door



Competitor's polyurethane door

### WHY DO MIDLAND THERMOGUARD™ DOORS PERFORM BETTER?

These thermal images show the result of a side-by-side comparison of a competitor's polyurethane door, next to a Midland polyurethane ThermoGuard™ door. The test was performed with the doors installed next to the other in the same location. The outside temperature was 0°F and the inside temperature was 55°F. The dark areas show where energy loss occurs.

- 01 TRUE THERMAL BREAK**  
Midland door sections utilize a true thermal break that minimizes energy loss between sections
- 02 MINIMAL AIR INFILTRATION**  
A flexible commercial-grade seal between the door sections minimizes air infiltration
- 03 SUPERIOR FIT**  
Midland door sections have tighter and more consistent section gaps
- 04 MOISTURE RESISTANT**  
Closed cell end dams help to keep moisture away from insulation
- 05 STRUCTURAL RIGIDITY**  
Concealed full-height vertical center stiles and tailor-made custom end stiles provide structural rigidity
- 06 QUALITY STEEL**  
Hot dipped galvanized steel, that is conditioned and embossed with a pebble texture for maximum durability