

MIRACO

Livestock Water Systems

"Originators of insulated poly waterers"



5 Yr. Warranty



MiraFount 3330

MiraFount 3465

CAPACITY	50 head beef 25 head dairy
GALLONS	15 (57 liters)
SPECIFICATIONS	One 8.75" opening / 9" ball closure
DIMENSIONS	28" x 26" x 14" (71 x 66 x 35.5 cm)
WEIGHT	59 pounds (27 kg)
DRINKING HEIGHT	14" (35.5 cm)

CAPACITY	100 head beef 40 head dairy
GALLONS	20 (75 liters)
SPECIFICATIONS	Two 9.25" openings / 10" ball closures
DIMENSIONS	36" x 24" x 18" (91 x 61 x 46 cm)
WEIGHT	79 pounds (36 kg)
DRINKING HEIGHT	18" (46 cm)



MiraFount 3345



MiraFount 3390

CAPACITY	75 head beef 30 head dairy
GALLONS	30 (112 liters)
SPECIFICATIONS	One 10" opening (10-3/4" ball)
DIMENSIONS	29" x 31" x 18" (73.6 x 109 x 66 cm)
WEIGHT	95 pounds (43 kg)
DRINKING HEIGHT	18" (66 cm)

CAPACITY	150 head beef 60 head dairy
GALLONS	44 (166.5 liters)
SPECIFICATIONS	Two 10" openings / 10.75" ball closures (convertible)
DIMENSIONS	43" x 29" x 20" (109 x 73.6 x 51 cm)
WEIGHT	126 pounds (57 kg)
DRINKING HEIGHT	20" (51 cm)



MiraFount 3370-S

CAPACITY	250 head beef 120 head dairy 200 cow/calf units
GALLONS	100 (378 liters)
SPECIFICATIONS	Six 9.5" openings / 10.75" ball closures
DIMENSIONS	57.5" x 45.5" x 20" (146 x 115 x 51 cm)
WEIGHT	216 pounds (98 kg)
DRINKING HEIGHT	20" (51 cm)

MiraFount 3410

CAPACITY	100 head market hogs 50 head sows
GALLONS	6 (23 liters)
SPECIFICATIONS	Two lift-up lids / 10" openings
DIMENSIONS	34" x 19" x 16" tall (86 x 48 x 41 cm)
WEIGHT	52 pounds (24 kg)



E-Fount 3330-E



CAPACITY	50 head beef
GALLONS	15 (57 liters)
SPECIFICATIONS	One 8.75" opening / 9" ball closure
DIMENSIONS	28" x 26" x 14" tall (71 x 66 x 36)
WEIGHT	57 pounds (26 kg)
HEAT ELEMENT	75 watts

E-Fount 3340-E



CAPACITY	100 head sheep
GALLONS	15 (57 liters)
SPECIFICATIONS	Four 6" openings / 7" ball closures
DIMENSIONS	28" x 26" x 14" tall (71 x 66 x 36 cm)
WEIGHT	57 pounds (26 kg)
HEAT ELEMENT	75 watts

E-Fount 3345-E



E-Fount 3354-E



CAPACITY	75 head beef 30 head cattle
GALLONS	30 (112 liters)
SPECIFICATIONS	One 10" opening (removable top)
DIMENSIONS	29" x 31" x 18" tall (73.6 x 109 x 46 cm)
WEIGHT	95 pounds (43 kg)
DRINKING HEIGHT	18" (46 cm)
HEAT ELEMENT	75 watts

CAPACITY	200 head beef 90 head dairy
GALLONS	70 (265 liters)
SPECIFICATIONS	Four 9.5" openings / 10.75" ball closures (convertible)
DIMENSIONS	57.5" x 32.5" x 19" (146 x 48 cm)
WEIGHT	152 pounds (69 kg)
DRINKING HEIGHT	19" (48 cm)
HEATING ELEMENT	Two 75 watt heaters

E-Fount 3390-E



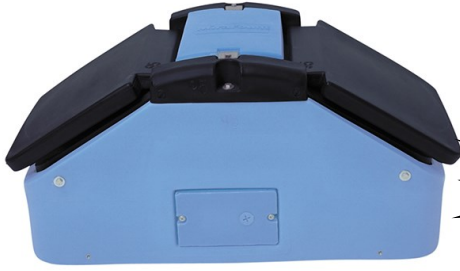
E-Fount 3410-E



CAPACITY	150 head beef 60 head dairy
GALLONS	44 (166 kg)
SPECIFICATIONS	Two 10" openings / 10.75" ball closures; Removable end panels
DIMENSIONS	43" x 29" x 20" tall (109 x 74 x 51 cm)
WEIGHT	129 pounds (58 kg)
HEAT ELEMENT	75 watts

CAPACITY	200 market hogs 100 sows
GALLONS	15 (57 liters)
SPECIFICATIONS	Four lift up lids / 10" openings
DIMENSIONS	34" x 36.5" x 16" tall (86 x 93 x 41 cm)
WEIGHT	98 pounds (45 kg)
HEAT ELEMENT	75 watts

E-Fount 3410-E



E-Fount 3465-E



CAPACITY	100 market hogs 50 sows
GALLONS	6 (27 liters)
SPECIFICATIONS	Two lift up lids / 10" openings
DIMENSIONS	34" x 19" x 16" tall (86 x 48 x 41 cm)
WEIGHT	57 pounds (26 kg)
HEAT ELEMENT	75 watts

CAPACITY	100 head beef 40 head dairy
GALLONS	20 (76 kg)
SPECIFICATIONS	Two 9.5" openings / 10" ball closures
DIMENSIONS	36" x 24" x 18" tall (91 x 61 x 46 cm)
WEIGHT	79 pounds (36 kg)
HEAT ELEMENT	75 watts



EQUIFount 1200/1201-Corner Mount



EQUIFount 1200/1201-Wall Mount

DIMENSIONS 16" x 16" x 14" tall (41 x 41 x 36 cm)
WEIGHT 22 pounds (10 kg)
HEAT Optional 22 watt heater

New Color Options

- Gray
- Blue(Standard)
- Black
- Hunter Green

Miraco's LilSpring Multi-purpose Waterers for general livestock feature:



- One-piece body polyethylene construction
- No sharp edges
- Tough high-impact resistant "Rockite" material
- The durability to stand up to livestock abuse
- Resistance to corrosion
- 5-year warranty
- Removable dome for quick and easy access to valve area
- 2" to 3" (5 to 8 cm) urethane foam insulation
- Molded base unit anchors (stainless steel anchor bolts included)
- Sloped bottom for easy cleaning
- Sealed bottoms



LilSpring 2700



CAPACITY	100 head sheep/goats
GALLONS	6 (22.7 liters)
LENGTH	28.75" (73 cm)
WIDTH	17.5" (44.5 cm)
DRINKING HEIGHT	14" (35.5 cm)
WEIGHT	40 pounds (18.15 kg)
HEAT	Optional 250 watt submersible heater

LilSpring 2800/2801



CAPACITY	30 head beef or horses
GALLONS	4 (15 liters)
DIMENSIONS	20" x 16" x 27" tall (51 x 41 x 69)
DRINKING HEIGHT	19" (48 cm)
VALVE	Miraco automatic plastic
WEIGHT	40 pounds (18 kg)
HEAT	Optional 110 volt 250 watt submersible heater
INSTALL	200 psi hose w/shut off valve in-

LilSpring 3000/3001



CAPACITY	30 head beef 30 head horses 50 head sheep
GALLONS	5 (19 liters)
DIMENSIONS	24" x 22" x 21" (61 x 56 x 53 cm)
DRINKING HEIGHT	16" (40 cm)
VALVE	Miraco automatic plastic
WEIGHT	48 pounds (22 kg)
HEAT	Optional 110 volt 250 watt submersible heater

LilSpring 3002 Extension



- Raises Lil'Spring 3000 and 3001 drinking height from 16" to 28" (40 to 71 cm)
- Ideal for installation in paddocks or stalls
- Makes water more visible
- Prevents livestock from putting feet in water bowl

LilSpring 3100/3101



LilSpring 3200/3201



CAPACITY	100 head beef 50 head dairy
GALLONS	8 (30 liters)
DIMENSIONS	36" x 22" x 27" (91 x 56 x 69 cm)
DRINKING HEIGHT	22" (55.8 cm)
VALVE	Miraco automatic plastic
WEIGHT	75 pounds (34 kg)
HEAT	Optional 110 volt 250 watt submersible heater

CAPACITY	150 head beef 75 head dairy
GALLONS	25 (95 liters)
DIMENSIONS	48" x 24" x 29" (122 x 61 x 74 cm)
DRINKING HEIGHT	24" (61 cm)
VALVE	Miraco automatic plastic
WEIGHT	98 pounds (45 kg)
HEAT	Optional 110 volt 250 watt submersible heater



BigSpring 6000/6001



BigSpring 6100/6101



CAPACITY	250 head beef 110 head dairy
GALLON	60 (227 liters)
LENGTH	80" (203 cm)
WIDTH	36" (91 cm)
DRINKING HEIGHT	24" (61 cm)
WEIGHT	205 pounds (93 kg)
HEAT	500 watt heater (optional) (110 or 220 volt)

CAPACITY	110 head dairy
GALLON	60 (227 liters)
LENGTH	80" (203 cm)
WIDTH	36" (91 cm)
DRINKING HEIGHT	24" (61 cm)
WEIGHT	205 pounds (93 kg)
HEAT	500 watt heater (optional) (110 or 220 volt)

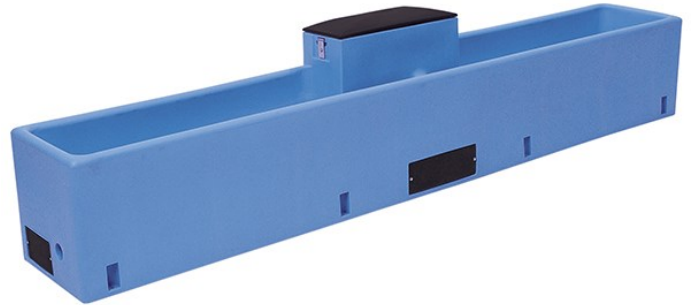


BigSpring 6200/6201



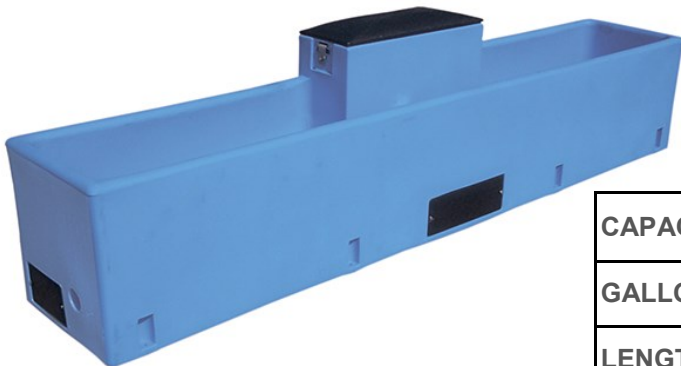
CAPACITY	100 head dairy 200 head beef
GALLONS	60 (227 liters)
LENGTH	84" (213 cm)
WIDTH	22" (56 cm)
DRINKING HEIGHT	22" (56 cm)
WEIGHT	170 pounds (77 kg)
HEAT	500 watt heater (optional) (110 or 220 volt)

BigSpring 6300/6301



CAPACITY	150 head dairy 300 head beef
GALLONS	110 (416 liters)
LENGTH	144" (366 cm)
WIDTH	22" (56 cm)
DRINKING HEIGHT	22" (56 cm)
WEIGHT	275 pounds (125 kg)
HEIGHT	500 watt heater (optional) (110 or 220 volt)

BigSpring 6400/6401



CAPACITY	125 head dairy
GALLONS	90 (340 liters)
LENGTH	120" (305 cm)
WIDTH	22" (56 cm)
DRINKING HEIGHT	22" (56 cm)
WEIGHT	230 pounds (104 kg)
HEAT	500 watt heater (optional)