

CONSTRUCTION NOTES AND OPINION OF QUANTITIES:

WATER:	QUANTITY
① INSTALL 8" DIP CLASS 350 W/L PER EVMD STD W-1, W-3, W-4	628 LF
② INSTALL 8" RWGV, FL&FLG, VALVE WELL & RISER PER EVMD STD. DWG. NO. W-13	4 EA
③ INSTALL FLEXIBLE PIPE COUPLING PER AWWA C200	2 EA
④ INSTALL 6" FIRE HYDRANT ASSEMBLY PER EVMD STD. W-7; 6"x4"x2 1/2", CHROME YELLOW WITH GREEN TOPS AND NOZZELS (CLASS A), WET BARREL.	4 EA
⑤ INSTALL 1" A.V. & A.R. ASSEMBLY PER EVMD STD. W-16, W-21	1 EA
⑥ INSTALL 8" D.I. (FLxFLxFL)TEE PER EVMD STD. W-4	1 EA
⑦ INSTALL 8" D.I. FLANGED CROSS PER EVMD STD. W-4	1 EA
⑧ CONSTRUCT WATER 1.5" SERVICE W/ 0.75" METER PER EVMD STD. W-9	28 EA
⑨ INSTALL 6" BLOW OFF ASSEMBLY PER EVMD STD. W-19, W-4	1 EA
⑩ CONSTRUCT HIGH DEFLECTION COUPLING @ ALL VERTICAL DEFLECTIONS	3 EA
⑪ INSTALL 90° ELBOW PER EVMD STD. W-4	1 EA
⑫ INSTALL ACCESS GATE PER EVMD STD. SD-13	1 EA
⑬ SAWCUT EXIST. PAVING & REPAIR PER COUNTY OF RIVERSIDE STD. 818	4 LF
⑭ INSTALL FENCE PER EVMD STD SD-3, OR H.O.A. APPROVED.	288 LF
⑮ INSTALL BLUE RETROREFLECTIVE PAVEMENT MARKERS PER DETAIL SHEET 1.	5 EA

SEWER:	QUANTITY
⑯ CONSTRUCT 8" PVC SDR 35 SEWER MAIN PER EVMD STD. S-1	708 LF
⑰ CONSTRUCT SEWER LATERAL PER EVMD STD. S-14, S-15	28 EA
⑱ INSTALL SEWER LATERAL CONNECTION TO EXIST SEWER MAIN PER EVMD STD S-19	12 EA
⑲ CONSTRUCT 5' TERMINUS SEWER ACCESS HOLE PER EVMD STD. S-6, S-9, S-10	2 EA
⑳ SAWCUT EX. PAVING & REPAIR PER COUNTY OF RIVERSIDE STD. 818	241 LF
㉑ CONSTRUCT 5' SEWER ACCESS HOLE PER EVMD STD. S-5, S-9, S-10	3 EA
㉒ CONSTRUCT AC PAVING PER ACCESS ROAD DETAIL, THIS SHEET	1,476 SF
㉓ PAVING DETAIL AROUND MANHOLES PER EVMD STD S-10	1 EA
㉔ INSTALL STEEL CASING PER EVMD STD S-19	231 LF

IRRIGATION WATER:	QUANTITY
㉕ INSTALL 1.5" WATER METER WITH BACKFLOW PREVENTER PER LANDSCAPE ARCHITECT	1 EA

ABBREVIATIONS

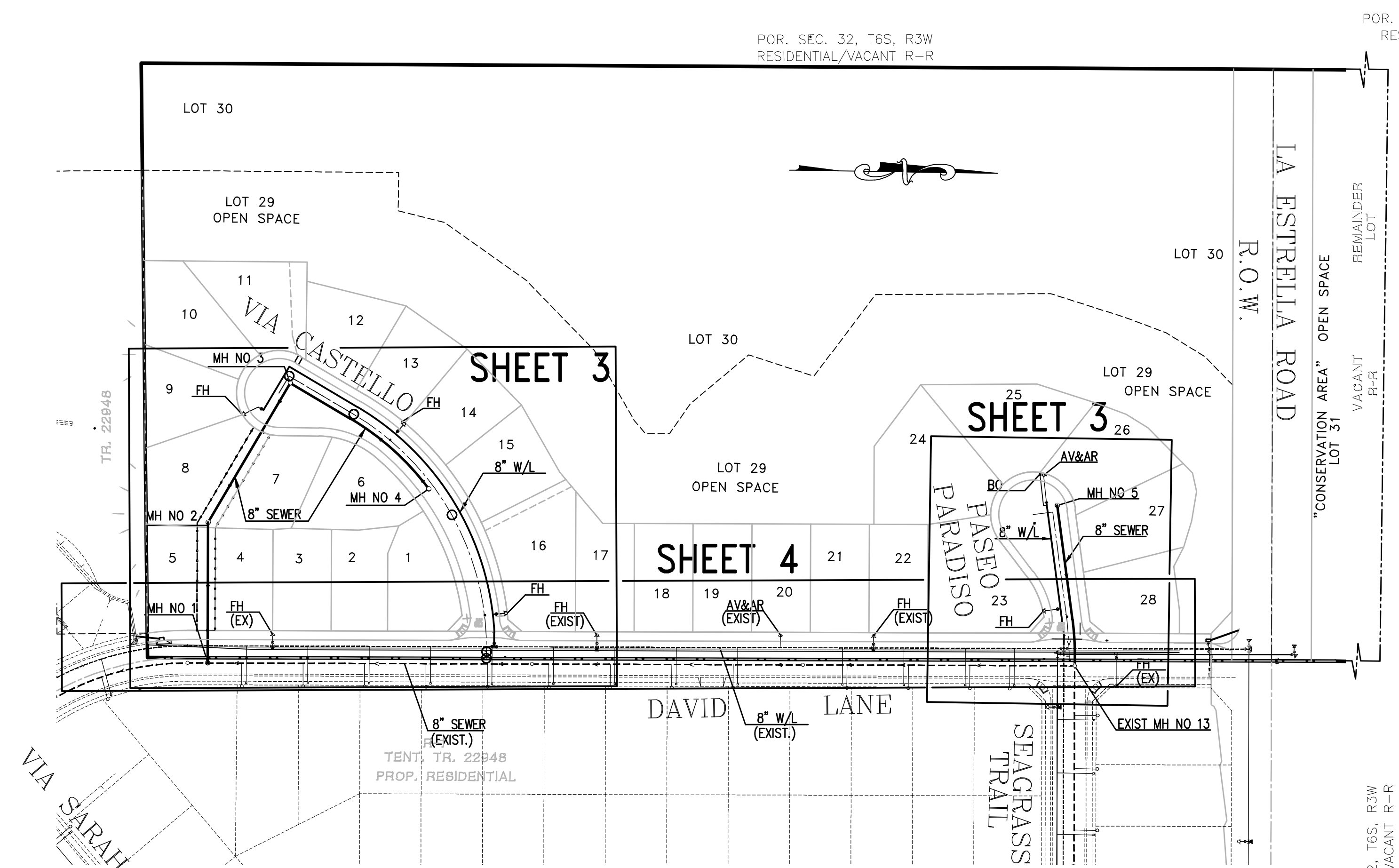
ADDITIONAL ABBREVIATIONS NOT IN EVMD STD. DWG. NO. G-3

AV&AR	AIR VACUUM AND AIR RELEASE ASSY.
(E)	EXISTING
(P)	PROPOSED
EVMD	ELSINORE VALLEY MUNICIPAL WATER DISTRICT
ESMT	EASEMENT
FT	FEET
FH	FIRE HYDRANT
FLG	FLANGE
RSKV	RESILIENT SEAT GATE VALVE
LF	LINEAR FEET
W/L	WATER LINE

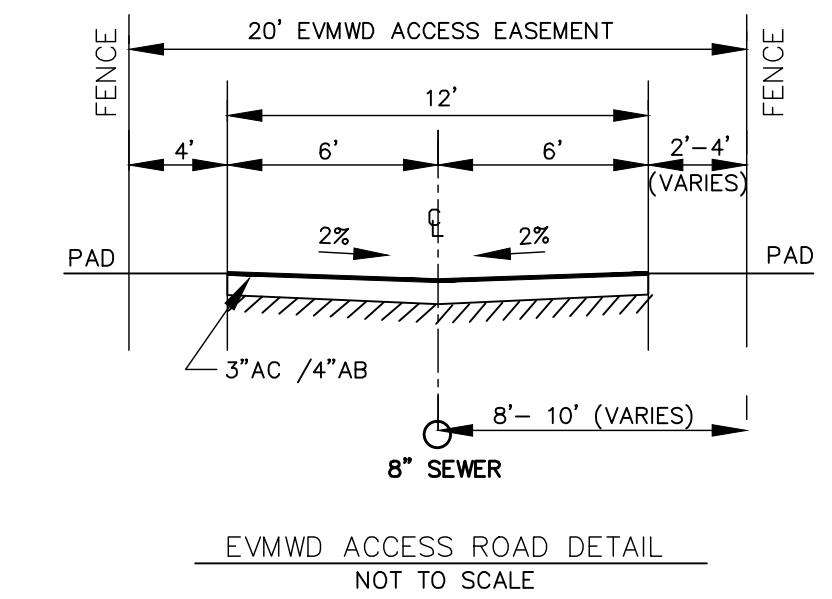
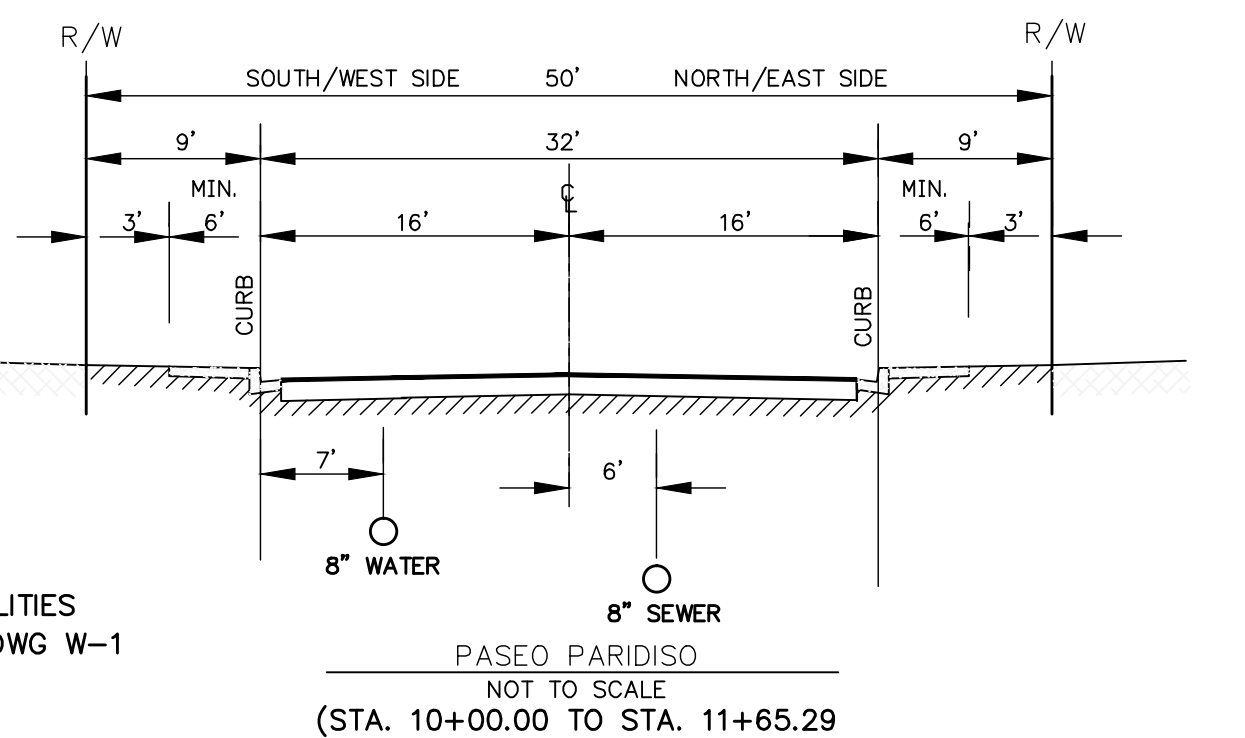
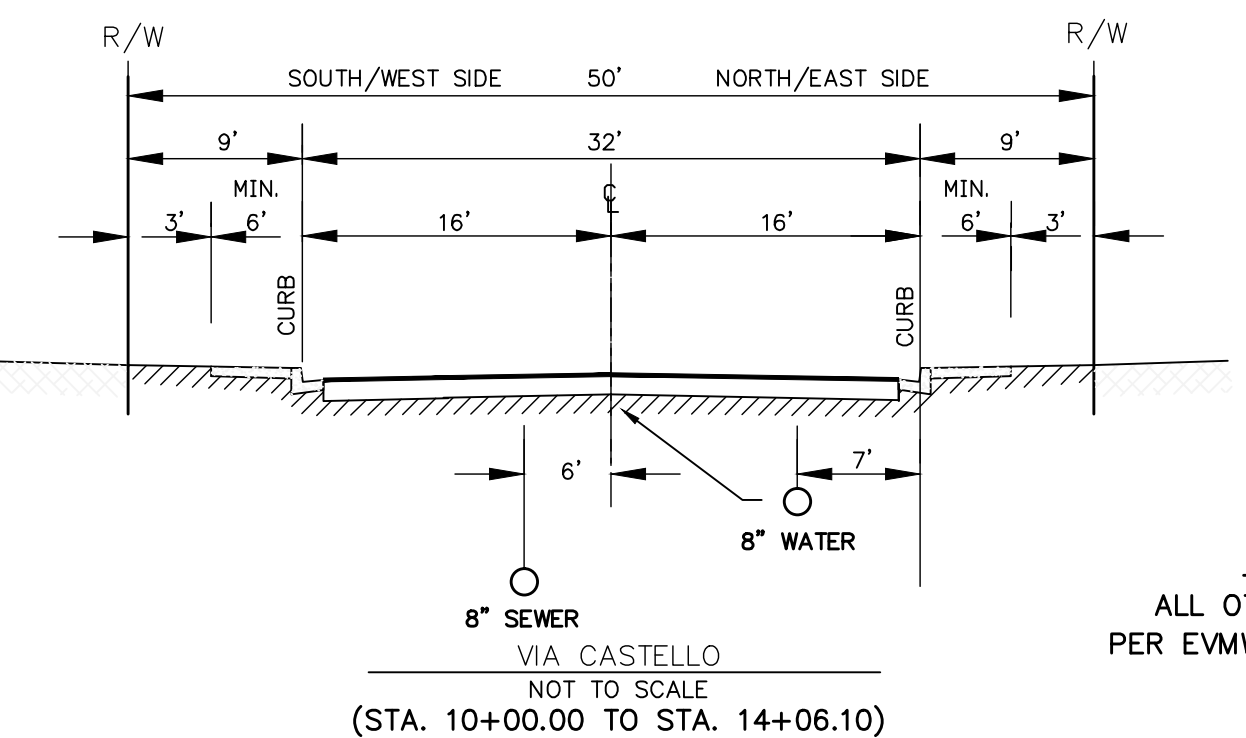
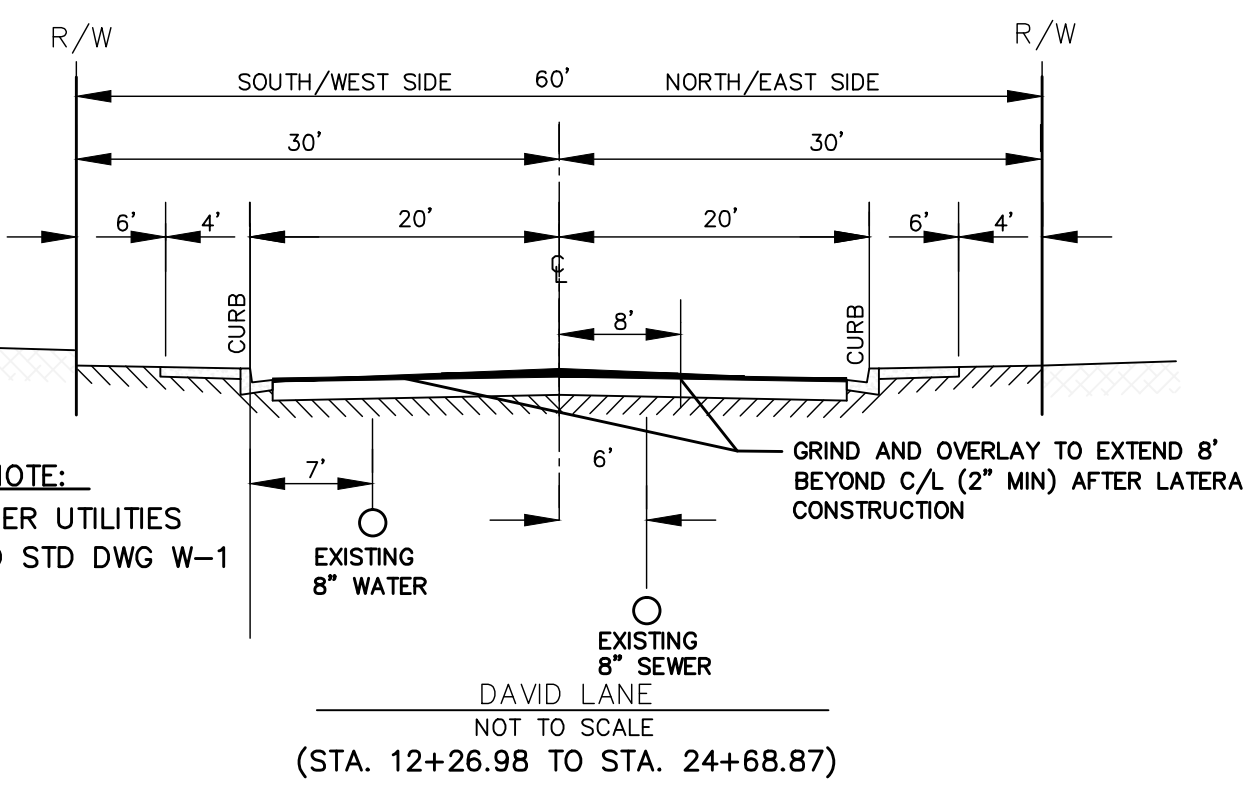
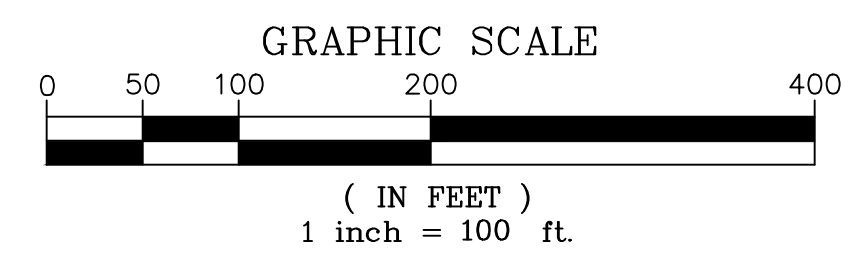
LEGEND:

ADDITIONAL SYMBOLS NOT IN EVMD STD. DWG. NO. G-1 AND G-2

	PROPOSED WATER LINE
	PROPOSED SEWER LINE
	EXISTING WATER LINE
	EXISTING SEWER LINE
	FIRE HYDRANT ASSEMBLY
	AIR VACUUM AND AIR RELEASE ASSY.
	BLOW OFF
	RESILIENT WEDGE GATE VALVE
	90° ELBOW
	SEWER MANHOLE
	FENCE
	BLUE RETRO REFLECTIVE MARKER



INDEX MAP
SCALE: 1"=200'



Underground Service Alert

TWO WORKING DAYS BEFORE YOU DIG

BASIS OF BEARING

THE BASIS OF BEARING FOR THIS PLAN IS THE SOUTH LINE OF THE N.E. 1/4 OF SECTION 32, T.6S., R.3W., S.B.M. PER R.S. 49/45 BEING N 88°44'24" E.

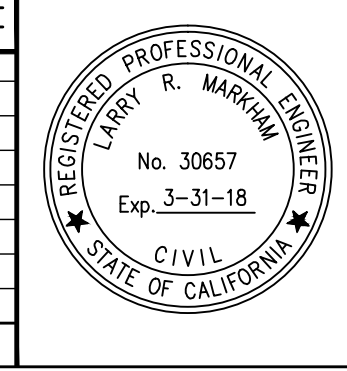
VERIFY SCALES

BAR IS ONE INCH ON ORIGINAL DRAWING

IF NOT ONE INCH ON THIS SHEET, ADJUST SCALES ACCORDINGLY

REV	BY	DATE	REVISIONS	APPR.	DATE
1	KM	5/30/13	REDLINES FROM "PLAN REVIEW 1"		

DESIGNED BY: GL DRAWN BY: GL CHECKED BY: LM



SUBMITTED BY:
LARRY R. MARKHAM R.C.E. 30657 EXP. 3/31/18

DATE

PLANS PREPARED BY:
M-D-M-G
MARKHAM DEVELOPMENT MANAGEMENT GROUP, INC.
41635 Enterprise Circle N. - Suite B
Temecula, California 92590
(951) 296-3466 TEL (951) 296-3476 FAX

ELSINORE VALLEY MUNICIPAL WATER DISTRICT
WATER AND SEWER IMPROVEMENT PLANS
TRACT NO.29476
INDEX MAP AND CONSTRUCTION NOTES

RES: W.O.# 2013-019 P.Z.: 1650

I.P. No. 050095
SHEET NO. 2
OF 5 SHTS
FILE NO. JN 975.102

W.O.# 2013-019
S:\PROJECTS\0975.102 CALPROP\DWG\MASTER-SHEETS\UPSEWER-WATERS\W02.dwg, 6/1/2016 2:50:21 PM, DWG To PDF.pc3