

NOTE: HIGH DEFLECTION COUPLINGS TO BE INSTALLED AT ALL PVC GRADE BREAKS

SCALE 1" = 40' HORIZ  
1" = 8' VERT

VIA CASTELLO

PASEO PARADISO

CENTERLINE DATA

NO	RADIUS	Δ OR BEARING	TANGENT	LENGTH	COMMENTS
1		N60°14'58"W		22.00'	
2		N29°45'02"E		83.09'	
3	300.00'	60°14'58"	174.08'	315.47'	
4		N90°00'00"E		7.54'	
5		N8°22'36"W		22.00'	
6		N81°37'24"E		120.60'	
7	300.00'	07°40'00"	20.10'	40.15'	
8		N89°17'25"E		4.55'	

CONSTRUCTION NOTES

- WATER:**
- INSTALL 8" DIP CLASS 350 W/L PER EVMWD STD W-1, W-3, W-4
  - INSTALL 8" RWGV, FLGxFLG, VALVE WELL & RISER PER EVMWD STD. DWG. NO. W-13
  - INSTALL FLEXIBLE PIPE COUPLING PER AWWA C200
  - INSTALL 6" FIRE HYDRANT ASSEMBLY PER EVMWD STD. W-7; 6"x4"x2", CHROME YELLOW WITH GREEN TOPS AND NOZZELS (CLASS A), WET BARREL.
  - INSTALL 1" A.V. & A.R. ASSEMBLY PER EVMWD STD. W-16, W-21
  - INSTALL 8" D.I. (FLxFLxFL) TEE PER EVMWD STD. W-4
  - INSTALL 8" D.I. FLANGED CROSS PER EVMWD STD. W-4
  - CONSTRUCT WATER 1.5" SERVICE W/ 0.75" METER PER EVMWD STD. W-9
  - INSTALL 6" BLOW OFF ASSEMBLY PER EVMWD STD. W-19, W-4
  - CONSTRUCT HIGH DEFLECTION COUPLING @ ALL VERTICAL DEFLECTIONS
  - INSTALL 90° ELBOW PER EVMWD STD W-4
  - INSTALL ACCESS GATE PER EVMWD STD SD-13
  - SAWCUT EXIST. PAVING & REPAIR PER COUNTY OF RIVERSIDE STD. 818
  - INSTALL FENCE PER EVMWD STD. SD-3, OR H.O.A APPROVED
  - INSTALL BLUE RETROREFLECTIVE PAVEMENT MARKERS PER DETAIL SHEET 1.
- SEWER:**
- CONSTRUCT 8" PVC SDR 35 SEWER MAIN PER EVMWD STD. S-1
  - CONSTRUCT SEWER LATERAL PER EVMWD STD. S-14, S-15
  - INSTALL SEWER LATERAL CONNECTION TO EXIST SEWER MAIN PER EVMWD STD S-19
  - CONSTRUCT 5" TERMINUS SEWER ACCESS HOLE PER EVMWD STD. S-6, S-9, S-10
  - SAWCUT EX. PAVING & REPAIR PER COUNTY OF RIVERSIDE STD. 818
  - CONSTRUCT 5" SEWER ACCESS HOLE PER EVMWD STD. S-5, S-9, S-10
  - CONSTRUCT ACCESS ROAD PER DETAIL, SHEET 2
  - PAVING AROUND MANHOLE PER EVMWD STD S-10
  - INSTALL STEEL CASING PER EVMWD STD S-19

IRRIGATION WATER:

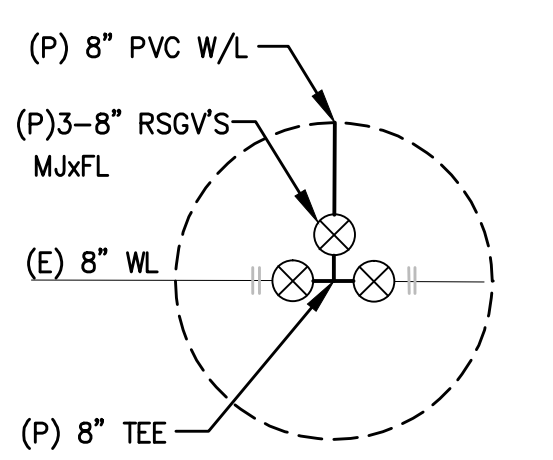
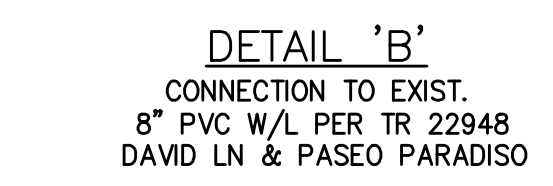
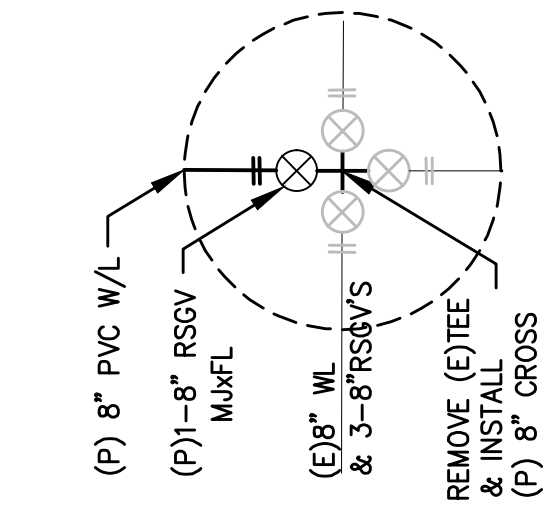
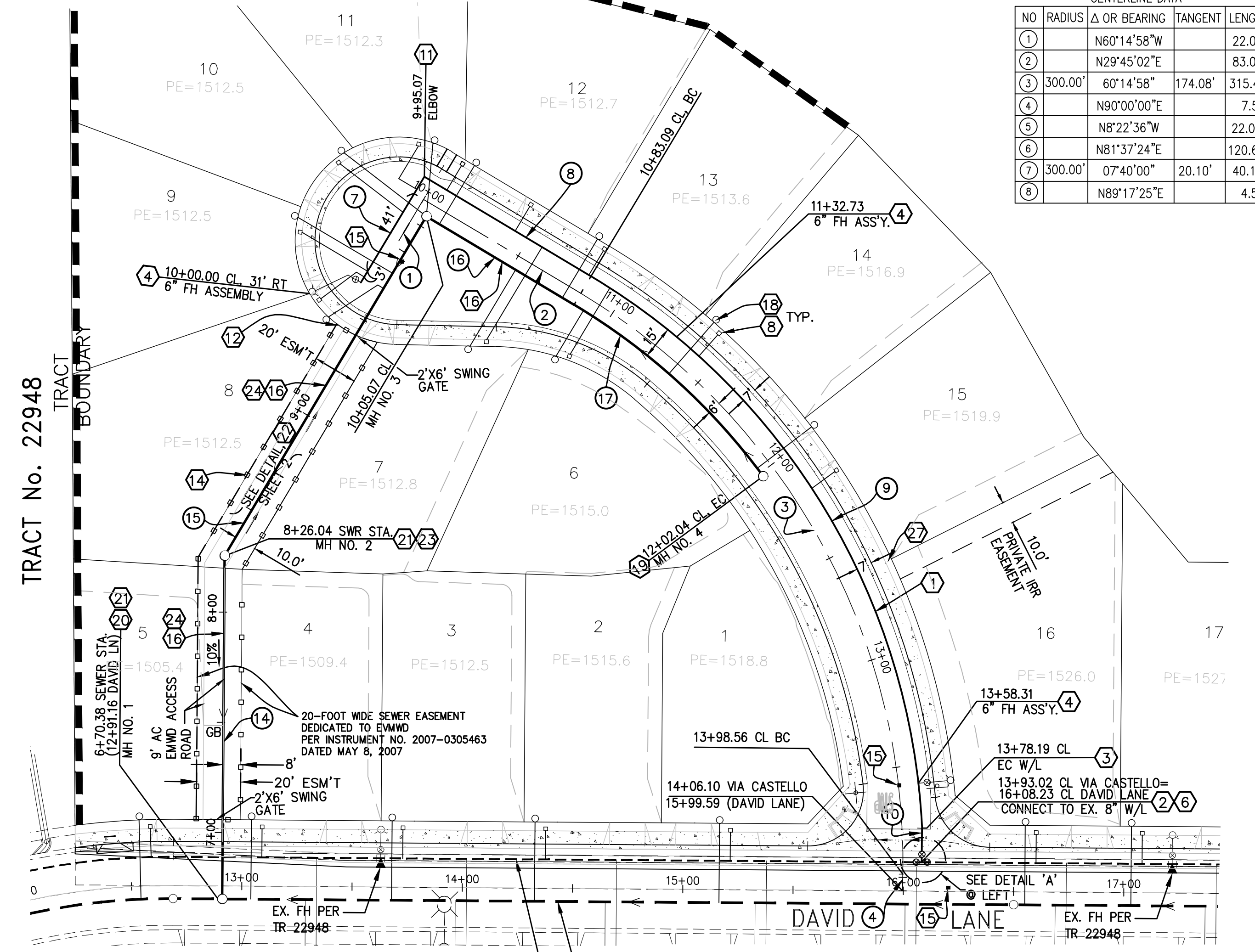
- INSTALL 1.5" WATER METER AND BACKFLOW PREVENTION PER LANDSCAPE ARCHITECT

WATERLINE DATA

NO	RADIUS	Δ OR BEARING	TANGENT	LENGTH	COMMENTS
7		N60°14'58"W		56.00'	8" DIP, C-151, CL 350
8		N29°45'02"E		88.09'	"
9	309.00'	56°21'35"	165.54'	303.95'	"
10		N89°17'08"E		15.38'	"
11		N81°37'24"E		148.65'	"
12		N89°17'25"E		14.34'	8" DIP, C-151, CL 350

SEWER LINE DATA

NO	RADIUS	Δ OR BEARING	TANGENT	LENGTH	COMMENTS
14		N89°17'25"E		155.66'	8" PVC, DR 35
15		N60°24'19"E		179.03'	"
16		N29°45'02"E		78.02'	"
17	294.00'	22°43'02"	59.06'	116.57'	"
18		N81°37'24"E		126.99'	"
19	306.00'	09°38'52"	25.82'	51.53'	"



NOTE TO CONTRACTOR:  
SHOP DRAWINGS MUST BE PROVIDED TO EVMWD FOR POINTS OF CONNECTION TO EXISTING DAVID LANE 8" W/L

NOTE:  
5' MINIMUM HORIZONTAL SEPARATION BETWEEN WATER AND SEWER LATERALS.

**Underground Service Alert**

TWO WORKING DAYS BEFORE YOU DIG

**BASIS OF BEARING**  
THE BASIS OF BEARING FOR THIS PLAN IS THE SOUTH LINE OF THE N.E. 1/4 OF SECTION 32, T.6S., R.3W., S.B.M. PER R.S. 49/45 BEING N 88°44'24" E.

**VERIFY SCALES**  
BAR IS ONE INCH ON ORIGINAL DRAWING  
IF NOT ONE INCH ON THIS SHEET, ADJUST SCALES ACCORDINGLY

**TRACT No. 22948**  
(E) 8" PVC W/L PER TR. 22948

GRAPHIC SCALE  
( IN FEET )  
1 inch = 40 ft.

**PASEO PARADISO**

GRAPHIC SCALE  
( IN FEET )  
1 inch = 40 ft.

NOTE:  
ALL HORIZONTAL & VERTICAL BEND FITTINGS, REDUCERS, TEES, CROSSES, FIRE HYDRANTS, BLOW-OFF ASSEMBLY, IN-LINE VALVES, DEAD ENDS, SHALL HAVE DUCTILE IRON PIPE RESTRAINED JOINTS. CONTRACTOR SHALL INSTALL AT LEAST ONE FULL JOINT OF DUCTILE IRON PIPE ON EACH FIRE HYDRANT TEE RUN (FLxFL) W/RESTRAINED FLANGED ADAPTERS CONNECTING PIPES TO TEE RUNS.

REV	BY	DATE	REVISIONS	APPR.	DATE	SUBMITTED BY:
1	KM	5/30/13	REDLINES FROM "PLAN REVIEW 1"			LARRY R. MARKHAM

DESIGNED BY: CM    DRAWN BY: GL    CHECKED BY: LM

PLANS PREPARED BY:  
**M&MG**  
MARKHAM DEVELOPMENT MANAGEMENT GROUP, INC.  
41635 Enterprise Circle N. - Suite B  
Temecula, California 92590  
(951) 296-3466 TEL    (951) 296-3476 FAX

**ELSINORE VALLEY MUNICIPAL WATER DISTRICT**  
WATER AND SEWER IMPROVEMENT PLANS  
TRACT NO. 29476  
**VIA CASTELLO & PASEO PARADISO**

RES:    W.O.# 2013-019    P.Z.: 1650

I.P. No. 050095

SHEET NO. **3**  
OF 5 SHTS  
FILE NO. JN 975.102

W.O.# 2013-019

S:\Projects\0975.102 CALPROP\DWG\MASTER-SHEETS\SEWER-SHEETS\DWG3.dwg, 6/1/2016 2:53:01 PM, DWG To PDF.plt