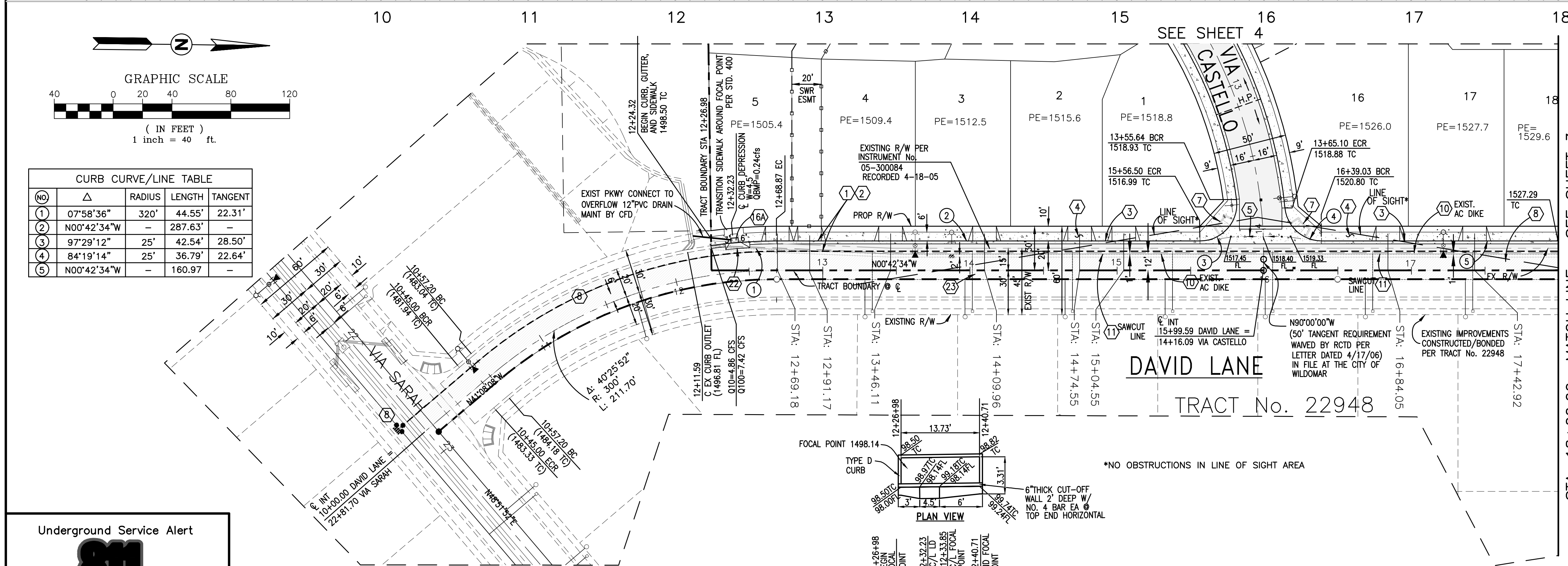
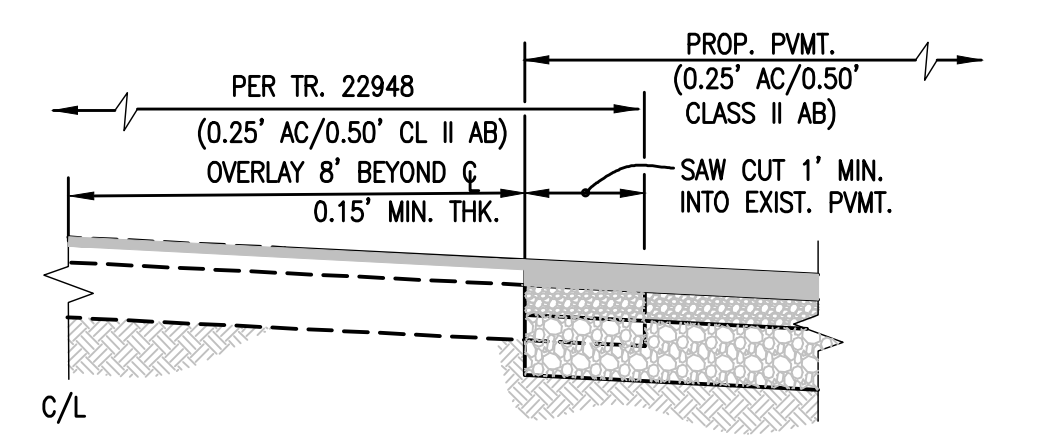


**PROFILE**  
SCALE: 1" = 40' HORIZ  
1" = 8' VERT

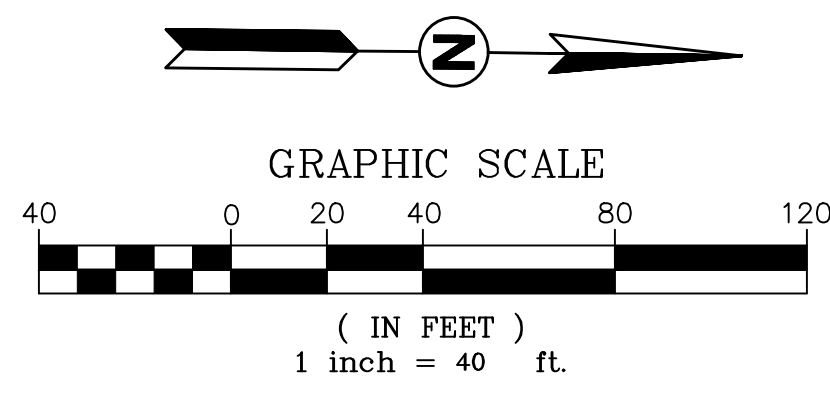


**CONSTRUCTION NOTES**

- 1 CONSTRUCT STREET IN ACCORDANCE WITH RCTD STD. NO. 106 (32'/50') TI = 5.5
- 2 CONSTRUCT 0.25" A.C. OVER 0.50" CLASS II AGGREGATE BASE
- 3 CONSTRUCT 6" TYPE "A-6" CURB & GUTTER PER RCTD STD. NO. 200.
- 4 CONSTRUCT 6' SIDEWALK PER RCTD STD(S). NO. 400 & 401.
- 5 CONSTRUCT SPANDREL AND X-GUTTER PER RCTD STD. NO. 209.
- 7 CONSTRUCT HANDICAPPED ACCESS RAMP PER RCTD STD. NO. 403.
- 8 GRIND IN PLACE AND CONSTRUCT A.C. OVERLAY (MIN. 0.15" THICK)
- 10 REMOVE A.C. DIKE
- 11 SAWCUT & REMOVE 1' (MIN.) OF AC PAVING
- 16A INSTALL FOCAL POINT BIOFILTRATION SYSTEM PER MANUFACTURER'S SPECIFICATIONS AND DETAIL SHEET 4 (3.31'W x 4.35'L)
- 22 CONSTRUCT GUTTER DEPRESSION (CASE "B") PER RCTD STD. NO. 311 OMIT CURB ALONG W PER DETAIL SHEET 4
- 23 GRIND IN PLACE AND CONSTRUCT A.C. OVERLAY 8' PAST CENTER LINE (MIN. 0.15" THICK) AFTER CONSTRUCTION OF LATERALS



PAVEMENT JOINT DETAIL  
NOT TO SCALE



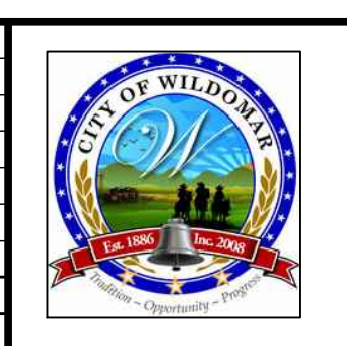
NO	Δ	RADIUS	LENGTH	TANGENT
1	07°58'36"	320'	44.55'	22.31'
2	N00°42'34"W	-	287.63'	-
3	97°29'12"	25'	42.54'	28.50'
4	84°19'14"	25'	36.79'	22.64'
5	N00°42'34"W	-	160.97'	-



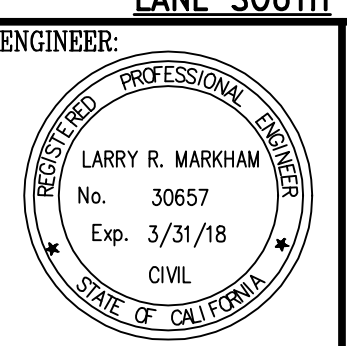
SOILS R-VALUE  
PER GEOCON  
DATED JUNE 4, 2014

**NOTE:**  
WORK CONTAINED WITHIN THESE PLANS SHALL NOT COMMENCE UNTIL AN ENCROACHMENT PERMIT AND/OR A GRADING PERMIT HAS BEEN ISSUED.  
THE PRIVATE ENGINEER SIGNING THESE PLANS IS RESPONSIBLE FOR ASSURING THE ACCURACY AND ACCEPTABILITY OF THE DESIGN HEREON. IN THE EVENT OF DISCREPANCIES ARISING AFTER COUNTY APPROVAL OR DURING CONSTRUCTION, THE PRIVATE ENGINEER SHALL BE RESPONSIBLE FOR DETERMINING AN ACCEPTABLE SOLUTION AND REVISIONS TO THE PLANS FOR APPROVAL BY THE COUNTY.

MARK	BY	DATE	REVISIONS	APPR.	DATE	COUNTY



**CITY OF WILDOMAR**  
ACCEPTED BY: \_\_\_\_\_ Date: \_\_\_\_\_  
DANIEL A. YORK, CITY ENGINEER  
P.E. 43212  
ACCEPTANCE AS TO CONFORMANCE WITH APPLICABLE CITY STANDARDS AND PRACTICES



**M.D.M.G.**  
MARKHAM DEVELOPMENT MANAGEMENT GROUP, INC.  
41635 Enterprise Circle N., Suite 8 • Temecula, California 92590 • (951) 296-3466 TEL • (951) 296-3476 FAX  
LARRY R. MARKHAM R.C.E. No. 30657 DATE \_\_\_\_\_

BENCHMARK: R-S  
ALUMINUM DISC IN CONCRETE POST APPROX. 0.45 MILES N.W.1/4 FROM THE POST OFFICE AT MURRIETA, CA. N.E. OF THE TEE INTERSECTION OF KALMAIA ST. AND 2ND AVE., 31 FEET N.E.1/4 OF THE CENTERLINE OF KALMAIA ST., 56 FEET S.E.1/4 OF PP. NO. 1594267E, 2 FEET N.W.1/4 OF END OF BLOCK WALL, 5 FEET N.E.1/4 OF A 4"x4" STREET SIGN POST, RESET 1983  
ELEVATION = 1094.817  
SCALE: AS NOTED

SCHEDULE "A" TRACT MAP 29476  
CITY OF WILDOMAR  
**STREET IMPROVEMENT PLANS**  
DAVID LANE STA. 10+00.00 TO STA. 18+00.00  
TRACT 29476  
FOR: CALPROP W.O. 975.102 CITY PROJECT #10-0077  
SHEET No. 2 OF 8 SHTS.

S:\Projects\0975.102\_CALPROP\DWG\MASTER-SHEETS\UP\STREETS\SIG02.dwg, 6/1/2016 5:34:31 PM, DWG TO PDF.pc3