

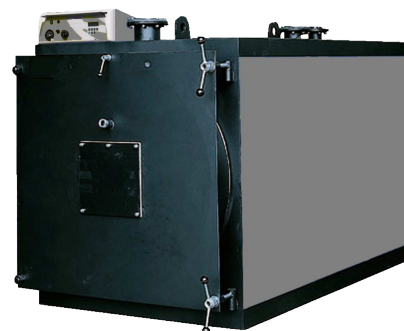
## BLOWTHERM PACK P AR 3S SERIES EFF 95% Pressurized Inversion Flame Hot Water Boiler

★★★ 3 Stars Efficiency in conformity to the 92/42/EEC European Directive, Efficiency: 95%

**Blowtherm** High efficiency inversion flame pressurized hot water Boilers PACK-P AR 80 3S – 3600 3S. The boiler is constructed as per European directive 90/396CE (directive on gas) and 92/42CE (directive on efficiency) and Certified to the PED (Pressure Equipment Directive).

### SPECIFICATION

- Steel boiler with total inversion flame combustion chamber
- Wide furnace with wet back
- Turbulators in stainless steel AISI 430, with special configuration for high efficiency
- Easy maintenance thanks to the big front door and to the bolted smoke chamber totally dismountable
- Thermo-insulation for combustion chamber in mineral wool
- Door with refractory thermo-insulation and flame sight glass
- Pre-coated steel cover
- Control panel with general switch with working lamp and thermal fuse, regulation thermostat, safety thermostat with manual reset, water dial thermometer
- Max working pressure: 6bar (5bar only for model PACK-P AR 80-130)
- Max working temperature: 115°C
- Output efficiency +95%

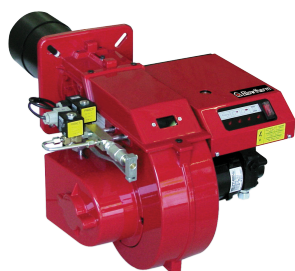


**OPTION:** Max working pressure: 8 bar and 10 bar

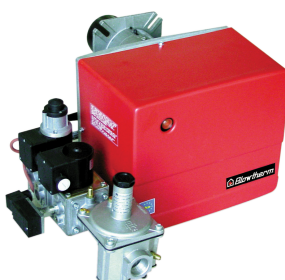
**OPTION:** Steel cover panel for frontal door

**Burner:** Unit furnished with burner and oil / gas train, Electronic Ignition Controller, Ignition electrode, Ignition transformer, diesel pump with oil valves and interconnecting piping. **CE Gas train** to include - Class A multi-block gas valve (slow opening single stage + safety valve), - Gas Pressure switch, - Gas Pressure reducer + filter. **CE-CT Gas train** (available on request) include - Class A multi-block gas valve (slow opening single stage + safety valve), - Valve proving system (control of gas leakage), - Gas Pressure switch, - Gas Pressure reducer +filter.

**Fuel Options:** Natural Gas, High-speed diesel oil, Heavy oil, Dual Fuel Oil/Gas Burners



OIL BURNER



GAS BURNER



OIL & GAS  
BURNER

PACK P AR 3S	80	90	130	170	200	250	300	350	400	450	500	600	700	800	900	1100	1300	1640	1850	2050	2580	3100	3600
Nominal Capacity kW	81	91	132	170	203	253	304	354	398	455	505	610	715	820	920	1100	1300	1645	1850	2050	2580	3100	3610
Furnace Capacity kW	86.2	96.7	140	180	214	266	320	372	418	477	530	640	750	860	966	1155	1365	1727	1942	2153	2709	3255	3791
Max. Boiler Pressure**	5	5	5	6	6	6	6	6	6	6	6	6	6	6	6	6	6	6	6	6	6	6	6
Empty Weight Kg	250	270	310	460	480	690	710	760	870	890	940	1310	1380	1440	1620	2200	2580	3300	3640	3710	5140	5650	7490

\*\* On request also available in 8 & 10 bar