

INNOVATIVE SOLUTIONS
FOR THE GLASS INDUSTRY

ocmi
a Division of OCMI-OTG

GAS HOOD FOR MODERNE MECANIQUE ANNEALING LEHR



Developed thanks to the experience of glass furnace specialists, **OCMI** new gas hood has to be applied exclusively on annealing lehrs of ampoules processing lines by **Moderne Mecanique**.

This device is totally interchangeable with the traditional electric hood and allows the customers to install it without changes in the original production line.

The primary purpose of the new gas hood is to allow customers to reduce their consumption costs and assure a fast payback of the investment.

Carefully tested with the support of several ampoules manufacturers, this new device can assure the total absence of glass strains on finished ampoules like and better than traditional electric oven.

The number of gas burners was established after testing the oven with different sizes of ampoules and types of glass tube. The gas hood has been developed with the same dimensions of the standard electric hood, consequently the option of elec-



tric lehr lifting is available also for this new version. This gas hood represents the last result of the most advanced know-how in glass processing furnaces, refractory materials and pharmaceutical glass treatment coming from **OCMI** and his partners.

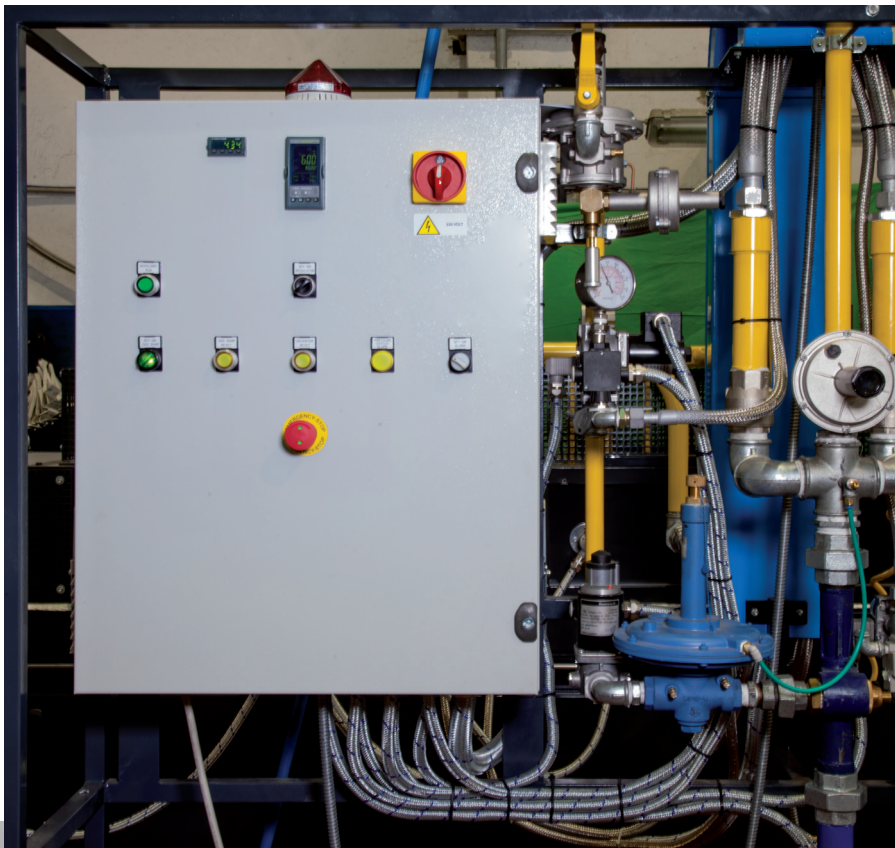


The gas powered hood is equipped with:

COMBUSTION CHAMBER phisically insulated by long-lifetime special quartz glass plate in order to avoid any contamination of ampoules from exhausted gas. The 3 mm thickness quartz glass plate installed can be continuously submitted to high temperatures without changing its characteristics.

TWO THERMOCOUPLES respectively checking the temperature into combustion chamber and into ampoules environment in order to keep variations under control and automatically compensate them. The original thermocouples of the electric lehr remain in their position to check the temperature along lehr length.

SMOKES EXHAUST channel to be connected with evacuating system of customer's factory (if available).



MACHINE TECHNICAL CHARACTERISTICS

Supply	LPG, Natural gas
Max gas pressure	80 mbar
Gas consumption	2.5-3.0 m ³ /h
Working temperature in combustion chamber	Up to 680 °C
Installed electric power	2 kW



OCMI-OTG S.P.A.

Via Venezia Giulia, 7
 20157 Milano (Italy)
 Phone +39.02.39.09.18.1
 Fax +39.02.35.70.944
 e-mail: info@ocmigroup.com
<http://www.ocmigroup.com>