

CAMERA INSPECTION SYSTEM OPTIVIAL



Optivial is an automatic camera inspection system ready to be installed in our new or existing vial machines **FLA-20S**, **FLA-35** and **TAM-16** to check directly the dimensions of the vials.



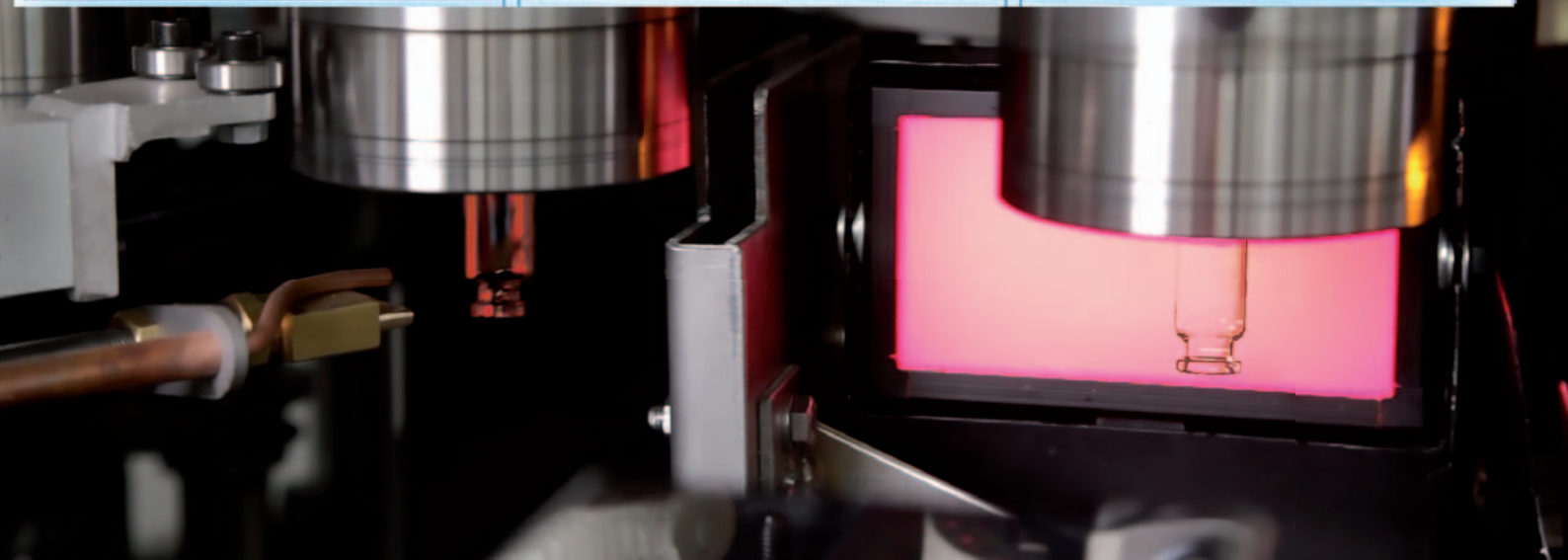
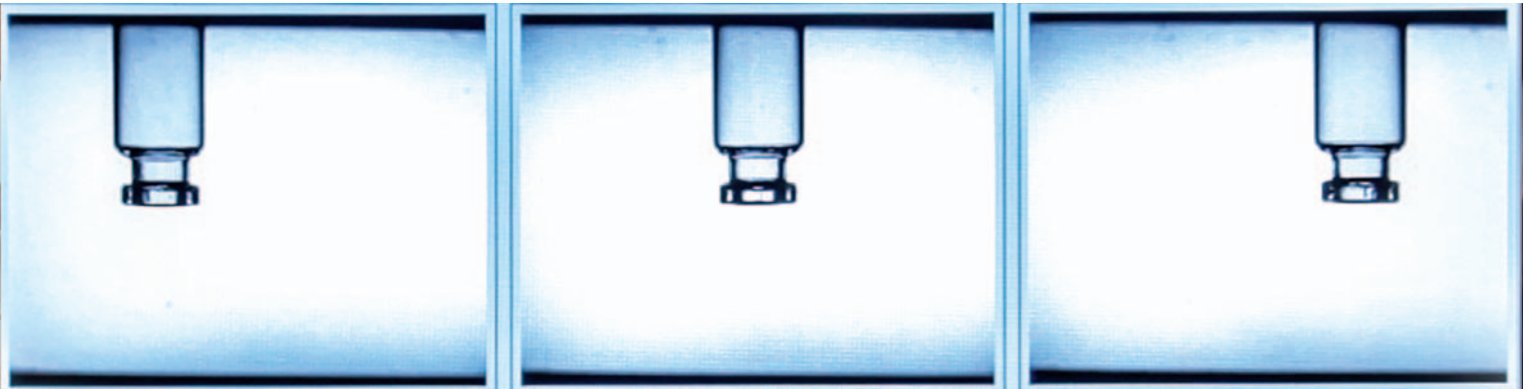
Set dimensions

Vial form: **Penicillin** | Glass type: **White** | Volume: **2R - 4ml**

Chuck number on Television Camera: **1** Nr.

	Nominal	Alarm +	Alarm -	Toler. +	Toler. -	Reject
d1 - BODY diameter (mm)	16.00	0.16	0.16	0.20	0.20	⊘ No
d2 - EXTERNAL MOUTH diameter (mm)	13.00	0.16	0.24	0.20	0.30	✓ Yes
d3 - NECK diameter (mm)	9.80	0.00	0.40	0.00	0.50	✓ Yes
d4 - INNER MOUTH diameter (mm)	7.00	0.16	0.16	0.20	0.20	⊘ No
h3 - NECK height (mm)	8.00	0.40	0.40	0.50	0.50	✓ Yes
h4 - LIP height (mm)	3.60	0.16	0.16	0.20	0.20	✓ Yes
r1 - SHOULDER radius (mm)	2.50	0.15	0.15	0.20	0.20	⊘ No
d2 - EXTERNAL MOUTH ovality (mm)	0.00	0.08		0.10		⊘ No

The CRM camera, which is installed in fix position, makes dimensional control of finished vials before unloading to the line. The control is made on all the main vial dimensions (except the total length) and neck eccentricity. According to these information out of tolerance vials are automatically rejected.



CONTROL PANEL

Through the touch screen panel, the operator can control all the main parameters of vials forming in real time. Furthermore the system memory stores all the type of vials from the ISO table. If the vial doesn't follow ISO sizes, it can be stored manually and saved in separated folders.

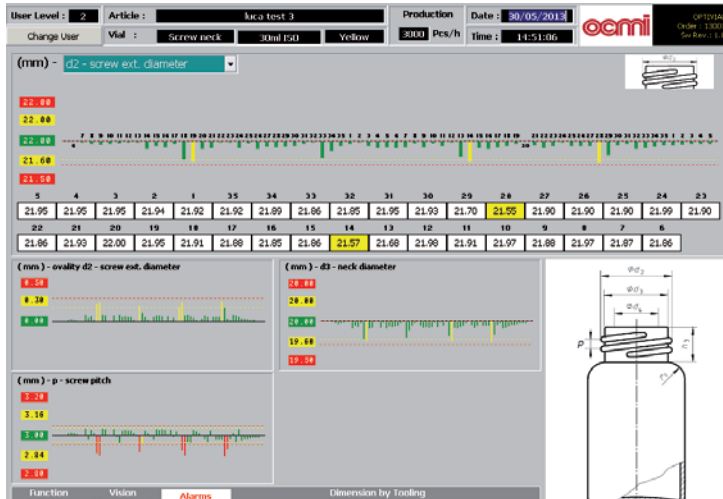
In the case of using with **FLA-35**, **OPTIVIAL** provides the possibility to check statistics linked to each single tooling station.

OPTIVIAL can work with both **penicillin** type and **screw neck** vials and the software provides two different check screen pages for each vial type.

In the case of **penicillin** vials the system can check the external diameter of the mouth and the lip height.

In case of **screw neck** vials the additional dimensions to be checked are external thread diameter and thread pitch.

OPTIVIAL can be also adapted to the glass drop-per forming machine **FLA-20/DROPPER**.



DATA STORAGE

PARAMETER	FLA-20S	FLA-35
Storing speed	8 variable values stored in 1,2 sec (for 1 vial)	8 variable values stored in 0,6 sec (for 1 vial)
Batch file storage capacity/hour	72.000 records	72.000 records
Batch file storage capacity/day	45 MByte	90 MByte
System total capacity	248 GByte (5.510 days of continuous storage)	248 GByte (2.767 days of continuous storage)



OCMI-OTG S.P.A.

Via Venezia Giulia, 7
20157 Milano (Italy)
Phone +39.02.39.09.18.1
Fax +39.02.35.70.944
e-mail: info@ocmigroup.com
http://www.ocmigroup.com