

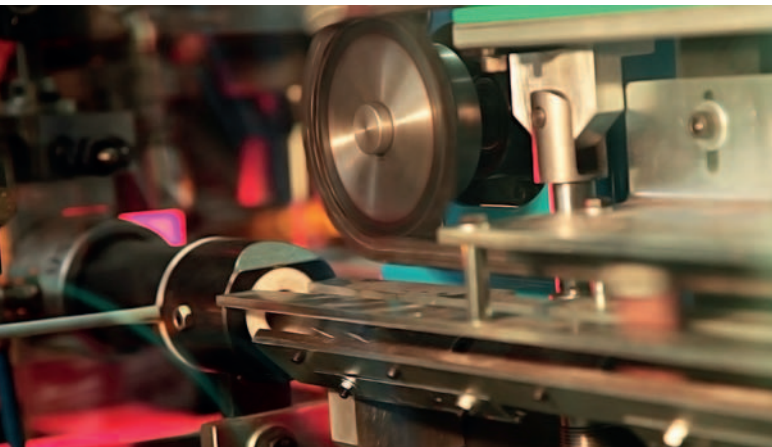
INNOVATIVE SOLUTIONS
FOR THE GLASS INDUSTRY



AUTOMATIC VIALS AFTER FORMING LINE LF-520/LF-535



Automatic processing line for vials to be connected with forming machines **FLA-20** or **FLA-35** for diameters between 8 and 30 mm and min. inner neck diameter of 5 mm. The line is available in the versions LF-520 and LF-535 according to the speed of the forming machine.



Unloading and Conveyor belt

One synchronizer between forming machine and line places the vials onto a chain conveyor fitted with V-shaped carriers and they then proceed at a regular rate to the various processing stations. Upon customer's request this conveyor belt can be equipped with a cooling fan protected by dedicated box.

On customer's demand the line can be equipped with the special VACUUM DEVICE to unload the vials from the top of the forming machine and reduce the risk of scratch or breakage.

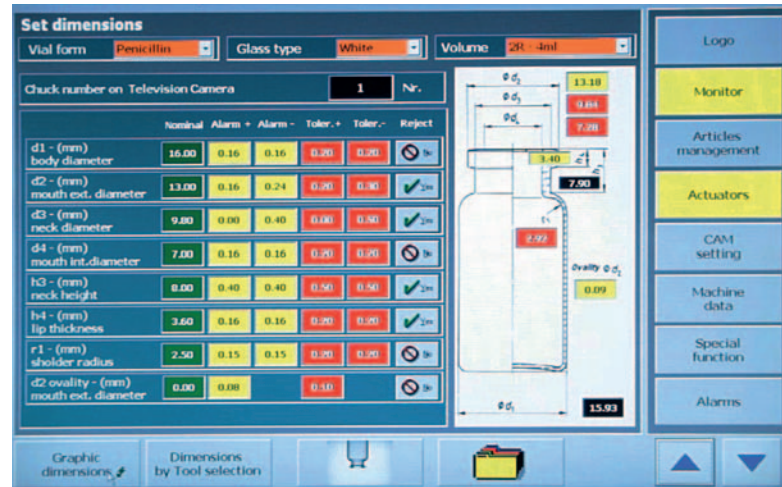
As an alternative option vials can be transferred to the line through a DRUM perfectly synchronized with the forming machine, pushing the products directly to the chain.



Calibration gauges

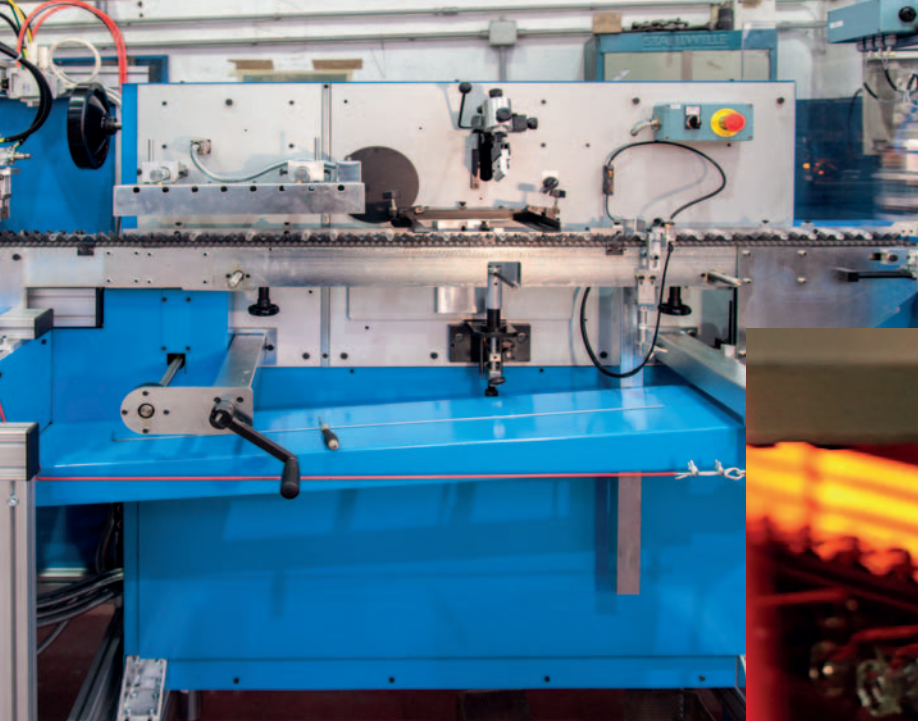
Electro-mechanical quality control stations able to control the main parameters of the finished products.

This station allows to check up to 4 parameters: total length, inner and external diameter and lip thickness.



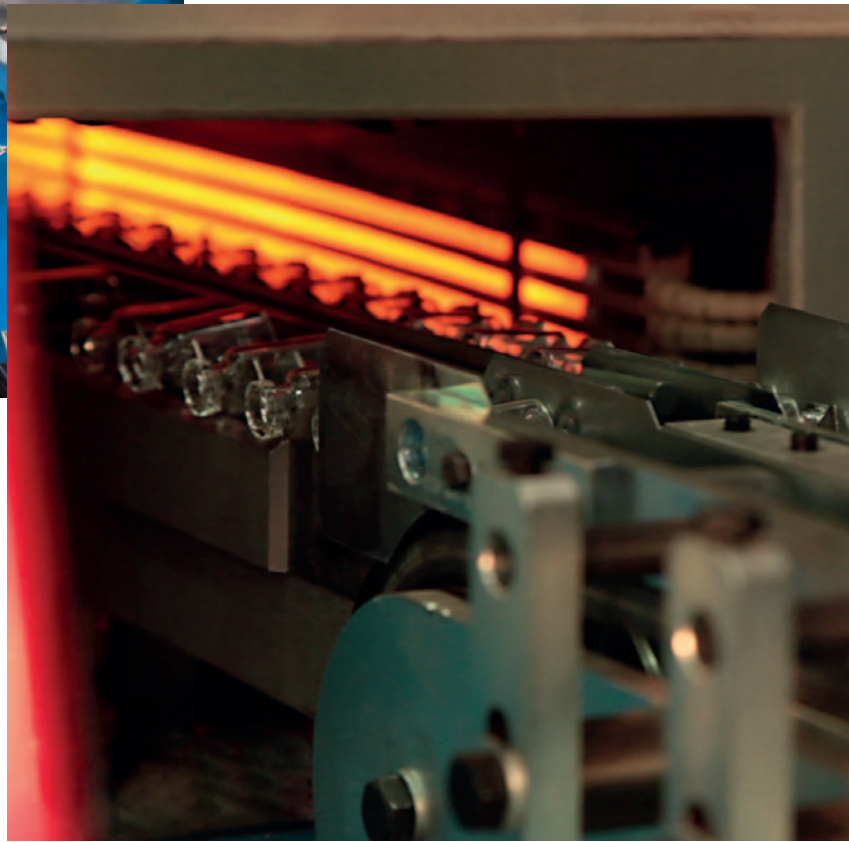
These calibration gauges could be replaced by the camera control system OPTIVIAL installed on the forming machine FLA20 or FLA35 that could check all the vial dimensions except for the total length.





Printing and pre-drying

Printing station by silk screen equipped with a sensor detecting the vial presence. This station is followed by a pre-drying oven equipped with heating elements.



Annealing

Electrical Annealing Lehr equipped with heating elements. The temperature is controlled by two independent thermocouples. The vials are moved along by four tracks working in pairs. The system allows a safer transfer of the vials and a better control of the heat constancy. The vials are progressively cooled in the final section of the tunnel to avoid internal strain, possible with sudden temperature changes.

GROSS PRODUCTION CAPACITY - DIN/ISO 8362 VIALS

Vial Type	Glass Tube O.D.	Production speed (pcs/h)	
		LF-520	LF-535
2R DIN	16 mm	3.000	5.000
10R DIN	24 mm	2.200	4.200
20R DIN	30 mm	1.600	3.200

AVERAGE CONSUMPTIONS

	LF-520	LF-535
Compressed air	15 m ³ /h	25 m ³ /h
Installed power	30 kW	40 kW

MODERNE MECANIQUE

13, avenue de la Trentaine
F-77507 CHELLES Cedex
(France)
Phone +33.(0)1.60.08.71.71
Fax +33.(0)1.60.08.65.75
e-mail: ventes@moderne-mecanique.fr



OCMI-OTG S.P.A.

Via Venezia Giulia, 7
20157 Milano (Italy)
Phone +39.02.39.09.18.1
Fax +39.02.35.70.944
e-mail: info@ocmigroup.com
<http://www.ocmigroup.com>