

THE GARDENS

The Gardens were co-designed by the cities of Kelowna and Kasugai. Building funds were raised through the efforts of both the City of Kelowna and the Kelowna-Kasugai Sister City Association.

In 1983, in Kasugai, Japan "Kelowna Boulevard", was dedicated to our growing friendship. It was complete with a replica of the Kelowna Sails.

The following year a site behind Kelowna City Hall was dedicated to link the citizens of Kelowna and Kasugai. That site is now known as Kasugai Gardens.

Completed in 1987, Kasugai Gardens symbolizes the friendship between the cities, providing residents and visitors with a pleasant and relaxing environment for quiet reflection.

CIRCLE OF FRIENDSHIP SCULPTURE



This memorial recognizes Yukihisa (Roy) Tanaka for his dedication to Kasugai Gardens and his outstanding service to cultural exchanges between Japan and Canada.

The steel sculpture, created and donated by Geert Maas, and erected at the entrance to Kasugai Gardens in 1997, is testament to the close relationship between the City of Kelowna, its Japanese sister city of Kasugai, and the local Japanese Canadian community.

This piece is part of the City of Kelowna Public Art Collection.

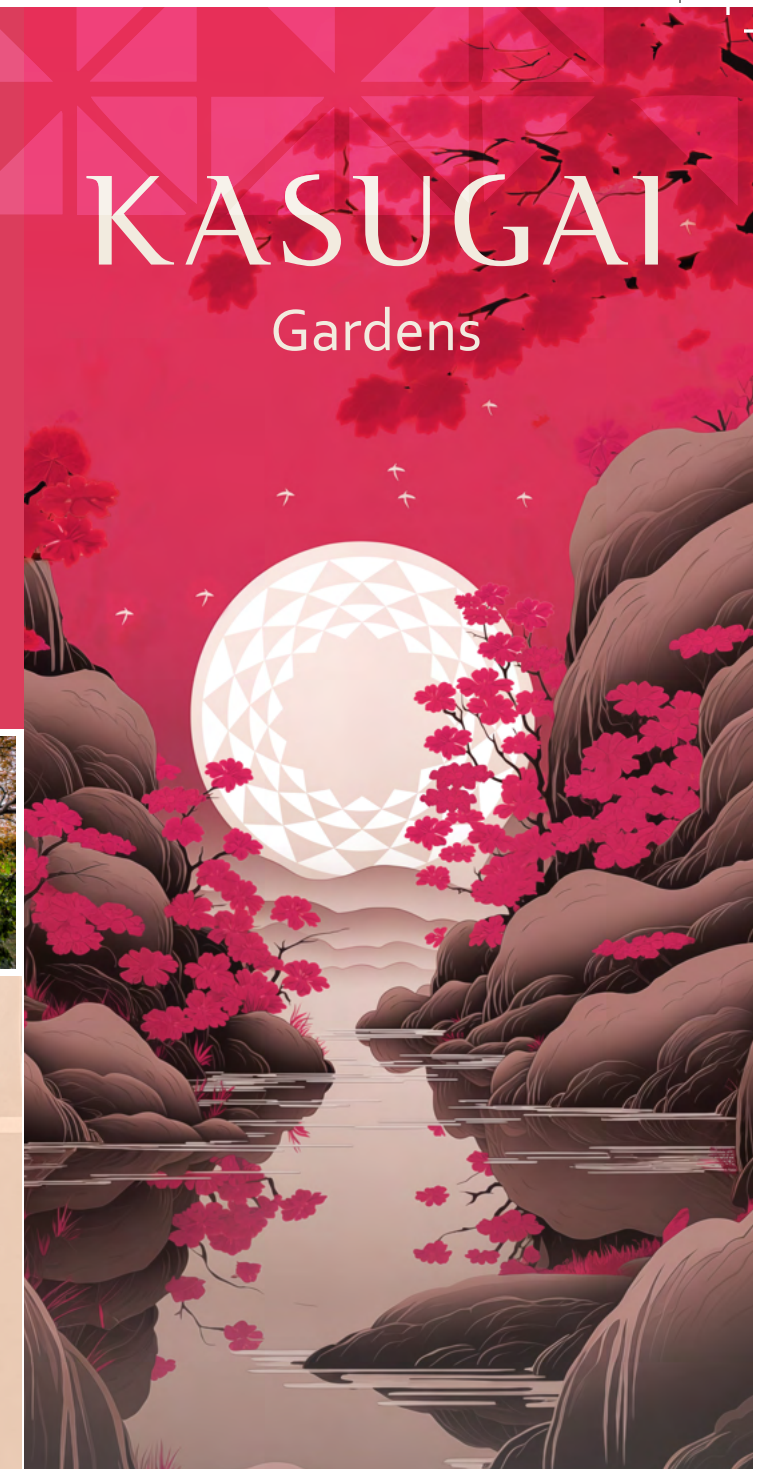
KASUGAI Gardens



THE KELOWNA-KASUGAI SISTER CITY ASSOCIATION

The Kelowna-Kasugai Sister City Association was established (1983) to:

- Promote and enhance the Sister City relationship between Kelowna, British Columbia and Kasugai, Aichi, Japan
- Plan and coordinate communication between interested groups and individual citizens of the two cities
- Plan and coordinate reciprocal visits between the citizens of the two cities



For more information visit:
Kelowna.ca/parks

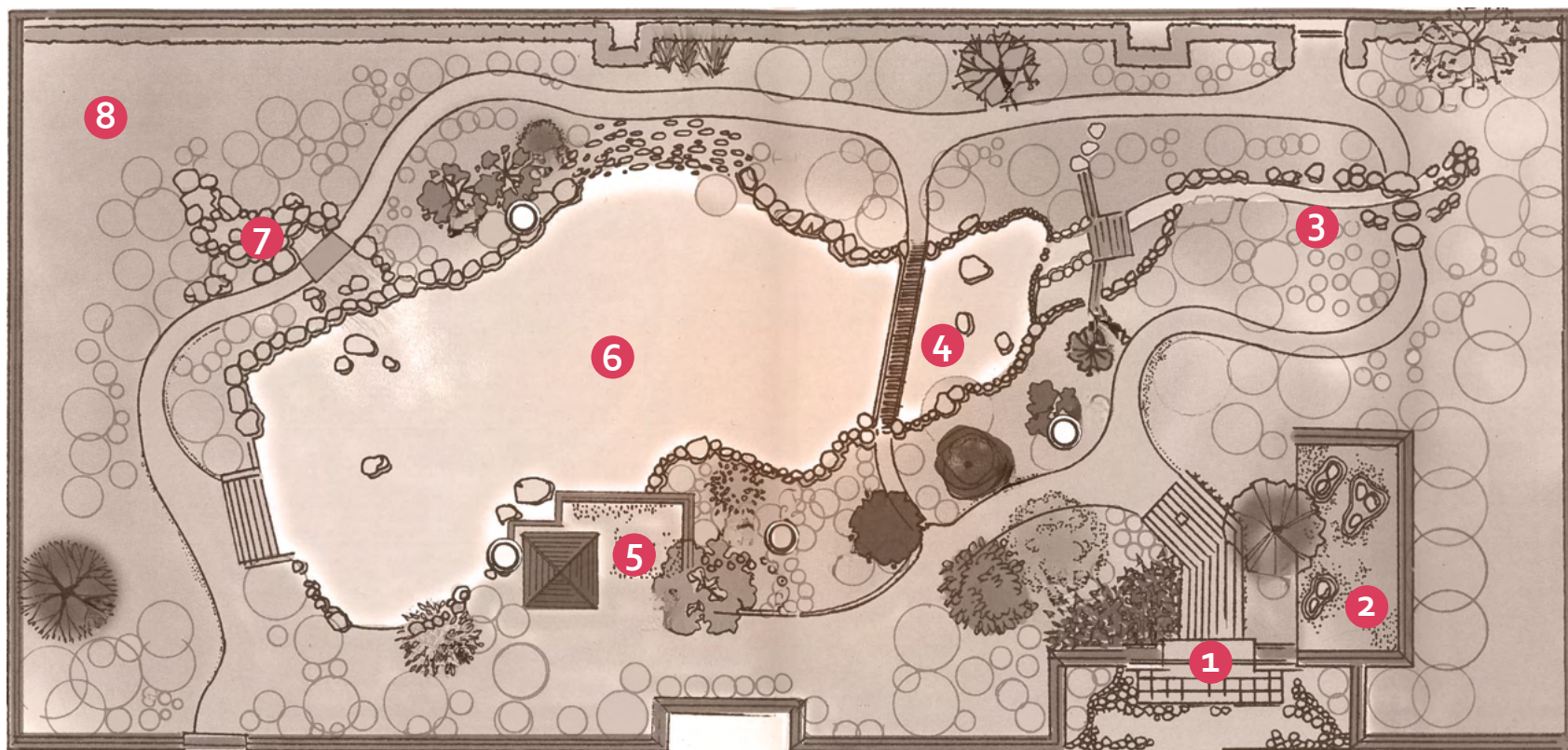


VISITOR INFORMATION & SELF-GUIDED TOUR

1435 WATER STREET, KELOWNA

KASUGAI

Gardens



1 ENCLOSURE & ENTRY

An enclosure is a frame to control how the garden will be viewed. It allows for the garden to be viewed as an independent work of art. Enclosure necessitates entries. Both physical and spiritual gates connect the garden to the outside world and divide it into selections of changing view. Physically, wooden gates are used, but more likely, scenery change is marked by a bend or rise in a path or another ephemeral gate.

2 STONE/ZEN GARDEN

(Karesansui Style) The use of white sand/rock depicts the sign of purification. Many shrines use white sand to create "ma" (space) which is used to represent "mu" (nothingness), a teaching of Zen Buddhism. The white stones represent the ocean; the raked patterns, the waves; and the rocks, the mountains and islands.

3 CREEK/STREAMS

Water represents life. The way water moves through a landscape illustrates the paths of least resistance such as the tendency of how one lives their life.

4 BRIDGES

The word "bridge" (hashi), also a homonym with the word for "edge", are seen as linking two edges; opposite shores of a river or symbolically "this world" and the "after world". The plank bridge is built low to the ground in order to give viewers a feeling of being close to the surrounding field scenes.

5 TEA GARDENS

In the 1500s tea gardens were constructed to be understated and naturalistic. A small humble tea room was made for the tea ceremony. The man-made water laver (tsukubai) was used to purify oneself before entering the tea room. All troubles and concerns were to be left outside.

6 POND

Represents the sea – everything flows into the pond, calming the restlessness of life. Rocks in the pond represent islands. The pond is stocked with Koi fish (Carp) which are synonymous with good luck and happiness.

7 MOUNTAIN/WATERFALL

Buddhists find the natural process of water springing from a mountain source, gathering strength as it rushes down a valley, eventually dissipating calmly into the sea to be a metaphor for human existence; birth, growth, death and rebirth.

8 FOREST

The inclining path depicts a change of scenery with the forest scene on the left and the tree covered hill ahead. Forest (mori) is similar to the word "moru" which means "to guard and protect."

For more information, please visit our website:
Kelowna.ca/parks