



Victoryliner

Ready to Go
Engineered
Drawings!

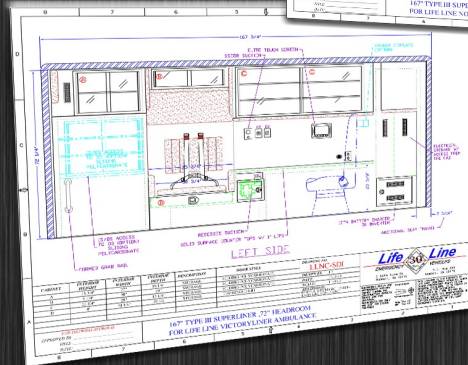
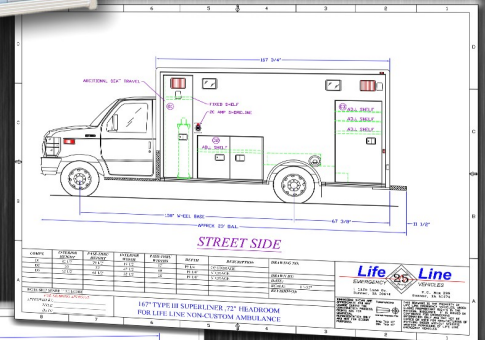
Perfection in Value

The Victoryliner, a pre-configured Superliner with a 167" Body Length. Features a Ford E450 Chassis with 158" Wheelbase. With all the standards of the Superliner, just limited to the most popular Life Line options.

With Numerous Standards, including:

- ✱ 72" Headroom
- ✱ Back-Up Camera, Utilizes Front Monitor when activated
- ✱ Momentary Disable Switch for Right Side Scene Lights
- ✱ Power Door Locks on Entry Doors
- ✱ Ducted Heat/AC
- ✱ Exterior Emergency LED Lighting
- ✱ Patient Area LED Lighting
- ✱ Exterior Compartment LED Lighting
- ✱ Stainless Steel threshold protectors
- ✱ Vortex Lined (Polyurea) Interior of Exterior Compartments

Call or visit us online for more information or to locate your nearest dealer!



Quicker
Process
Time!



LIFE LINE
EMERGENCY VEHICLES

American Made...Employee Owned!

P.O. Box 299 - Sumner, IA 50674 - www.lifelineambulance.com
563-578-3317 - 563-578-3305 (fax)

Upgrade Your Interior:

- Add Speed Load Door Feature to Cabinets
- Add Portable O2 Tank Quick Release Brackets
- Seamless Rear Facing Child/Attendant Seat
- Clock in the Rear Head Cushion
- Side Body Window
- Additional Shelves



Life Line allows you to customize your value priced "office" with a popular range of thoughtful features:

- ★ Second Rear Patient Control
- ★ 1000 Watt Inverter with a 55 Amp Battery Charger
- ★ Center Strip LED Lighting
- ★ Hidden Switch to unlock Power Door Locks
- ★ On Spot Tire Chain System
- ★ Buell Air Horns w/Compressor
- ★ Hydraulic Oxygen Tank Lift
- ★ Various Stryker Power Load Prep Packages
- ★ Compartment Door Power Locks
- ★ Ejector Type Shoreline - 20 Amp
- ★ Radio Pre-Wire Power & Ground
- ★ Opticom Pre-Wire with Park Disable Feature
- ★ Rear Bumper Tow Hooks & Rubber Dock Bumpers

Unchanged Life Line quality that delivers durability, performance and quiet comfort:

- The highest quality DuPont Elite paint to keep your transport office looking great.
- 3" Thick Labyrinth-Style doors throughout
- 3" Wide Hinges on all Compartment &
- 2x3 Crash Rail System design to absorb impact & minimize damage
- 2" thick double aluminum, interlocking, insulated Floor
- "Surround Quiet" insulation and vapor barrier
- Strong lightweight solid surface cabinet construction



LIFE LINE
EMERGENCY VEHICLES

The Next Generation of Ambulances will follow our Lead!

P.O. Box 299 - Sumner, IA 50674 - www.lifelineambulance.com
563-578-3317 - 563-578-3305 (fax)