



DMR-10S OPERATORS MANUAL



Part Number: DMR-10S OPS MANUAL

This document is proprietary and may not be reproduced in whole
or in part without express written permission from BA Arms.

04132025-Rev 0
©2025 BA Arms®
www.brunnerarms.com



Congratulations! You have purchased one of the finest weapons available anywhere today. The BA Arms Designated Marksman Rifle Model 10 Semi-Automatic (DMR-10S) in 7.62x51 (.308 Winchester) is the semi-automatic version of our elite operator designed Select Fire DMR Battle Rifle. Combining superior workmanship and only the finest materials and components, this rifle is built to last a lifetime with reasonable care. Everyone involved at BA Arms has worked very hard to bring you a very high-quality firearm with unmatched reliability, value and performance, proudly designed and built in the USA!

READ THIS MANUAL THOROUGHLY AND CAREFULLY BEFORE USING YOUR FIREARM!

IMPORTANT: DOWNLOAD, PRINT AND KEEP THIS MANUAL WITH YOUR FIREARM. The information contained in this manual is useful for novice shooters as well as experienced shooters. It contains information about functioning, cleaning and care of the weapon. These instructions may be helpful in shooting properly and safely!

The Safety warnings in this manual are important. Understanding the dangers inherent when using firearms and using the precautions described in this manual will allow the user to employ this firearm in complete safety. Disregard of these warnings can result in serious injuries to you and those around you, may result in serious damage to the weapon and/or other property. It is highly recommended that the user obtain professional instruction in the proper function checks, cleaning, assembly, disassembly, and usage PRIOR to the first use of this weapon. Local gun ranges, gun clubs, gun dealers and Hunter Safety organizations are good places to look for knowledge and assistance.

DISCLAIMERS

MANUFACTURERS' PRODUCTS ARE CONSIDERED DANGEROUS WEAPONS.
MANUFACTURER SHALL NOT BE RESPONSIBLE FOR CUSTOMER'S RESALE OR SAFE HANDLING OF PRODUCTS UNDER INTERNATIONAL, FEDERAL, STATE, LOCAL, OR MUNICIPAL LAWS, RULES, AND REGULATIONS.



MANUFACTURER SHALL IN NO EVENT BE LIABLE FOR ANY SPECIAL, INDIRECT, INCIDENTAL, CONSEQUENTIAL, PUNITIVE, OR EXEMPLARY DAMAGES DIRECTLY OR INDIRECTLY ARISING FROM ANY PERSON'S USE OR INABILITY TO USE PRODUCTS EITHER SEPARATELY OR IN COMBINATION WITH OTHER EQUIPMENT, OR FROM ANY OTHER CAUSE, EVEN IF MANUFACTURER HAD ADVANCE NOTICE OF THE POSSIBILITY OF SUCH DAMAGES, INCLUDING BUT NOT LIMITED TO, LOSS OF PROFITS, LOSS OF USE OR COST OF LABOR BY REASON OF THE FACT THAT SUCH ARTICLES WERE DEFECTIVE OR NONCONFORMING. THIS LIMITATION WILL NOT APPLY TO CLAIMS OF DEATH, PERSONAL INJURY, OR DAMAGE TO PROPERTY.

TABLE OF CONTENTS

<u>Description</u>	<u>Page</u>
DISCLAIMERS	2
TABLE OF CONTENTS	3
SAFETY INFORMATION	4
BASIC SAFETY RULES	4
GENERAL INFORMATION	5
INITIAL ASSEMBLY	6
INITIAL CLEANING	7
CLEARING THE WEAPON	7
FUNCTION CHECKS	8
AMMUNITION	9
LOADING	10
FIRING	11
CLEARING AND UNLOADING	12
DISASSEMBLY	13
CARE AND MAINTENANCE	14
REASSEMBLY	15
EXPLODED VIEW OF AR10/15	17
TROUBLESHOOTING	18
PARTS	20



SAFETY INFORMATION

This manual is written for both novice and experienced shooters. Regardless of your experience level with firearms that may be similar, spend some time getting to know THIS firearm. Each manufacturer of similar weapons makes slight changes that may cause differences to the basic operational and safety design that may not be readily apparent.

Handling firearms safely starts with the individual and requires training and discipline to follow time honored methods of safe use. Never treat a firearm recklessly. ALWAYS assume the weapon is loaded and treat it as such. Never put the muzzle on anything you do not intend to destroy. Modern firearms are well engineered and made of very strong materials designed specifically for firearms and modern ammunition loads. They contain many different safety features. They very rarely fail catastrophically when used in accordance with the manufacturer's guidance, are reasonably maintained and use high-quality factory-made ammunition. Always know how to use THIS firearm in accordance with THIS manual and never deviate from these procedures. No weapon safety mechanism is completely foolproof. Only the person using it can absolutely prevent an accident that could be deadly.

BASIC SAFETY RULES

1. Never point the muzzle at anything you do not intend to destroy.
2. Always pay attention to your backdrop around the target.
3. Always treat every weapon as if it were loaded, no matter how many times you clear it.
4. Never leave a loaded weapon unattended.
5. Load and Unload a weapon with the barrel pointed in a safe direction.
6. Obtain professional instruction from a competent firearms instructor prior to using any weapon.
7. Safety devices on the weapon are the first line of defense, not the last. They are mechanical and can fail. The operator is the final safety and is responsible for all actions of the weapon. **BE RESPONSIBLE WHEN HANDLING FIREARMS!**
8. Never place your finger on the trigger until you are ready to fire.
9. If the weapon fails to fire when you pull the trigger, check the safety first, then keep the weapon pointed in a safe direction for 30 seconds. You may have a slow burning primer, and the weapon can go off at any time.
10. Never shoot at water or a flat surface. Bullets can and will ricochet.



11. Always clear any weapon that is handed to you to ensure it is actually clear.
12. Never place your hand or other body part over the muzzle of a weapon.
13. If you suspect a bullet or other object is lodged in the barrel, immediately stop firing, place the weapon on safe, point the weapon in a safe direction, unload the weapon and then look through the bore from the rear, not just the chamber. If you see any obstruction, **DO NOT FIRE THE WEAPON!**
14. **DO NOT USE RELOADED AMMUNITION.** A “hot” round (overloaded) can cause an explosion in the chamber.
15. Always use eye and ear protection when firing a weapon. Cumulative damage can occur to your hearing without protection that can lead to permanent loss.
16. Always make sure anyone in the vicinity has eye and ear protection as well.
17. Always triple clear the weapon prior to breaking it down to clean it.
18. Never pull the trigger on a loaded weapon to test the safety mechanisms.
19. Always store weapons and ammunition in a safe place with limited access, especially around children.
20. **DO NOT USE ALCOHOL OR DRUGS AROUND WEAPONS!**
21. Never exchange assemblies between weapons. They may not be interchangeable.
22. If you have any questions about safety or proper operation of this or any firearm, please contact a shooting professional to receive proper instruction.

GENERAL INFORMATION

This weapon is an air cooled, magazine fed, gas operated factory manufactured product designed to be robust and to last a lifetime with reasonable maintenance and care. It isn't a custom-built weapon, and as such, there will be minor variances in the tolerances and fitment due to slight machining variations. This is normal for factory produced weapons and doesn't affect the normal operation or accuracy within the specification to which it was built. Every effort has been made to make each weapon as close as possible to the next.

There are parts of this weapon that have a very nice finish, and others that are finished to protect the metal from corrosion and provide lubricity but may not appear “polished” or finished. This is normal and has no effect on the operation or maintenance requirements.

Modern barrels, regardless of the various materials they are made from are designed for an average shooter to expect 10,000 – 15,000 rounds before replacement. Match shooters



will have a significantly reduced barrel life due to their accuracy requirements. Consequently, the operator can significantly lower those estimates by firing too rapidly over too short of a period consistently causing heat damage, using poor quality ammunition or not providing reasonable care and cleaning. Bottom line is take care of your equipment and it will take care of you.

INITIAL ASSEMBLY

Your weapon is shipped completely assembled and should not require any assembly. If your rifle has a collapsible buttstock mounted, they are very simple to use. You will depress the lever (see picture) and move the stock in or out to your preference and then release the lever. You may need to move the buttstock forward or aft slightly to allow the locking pin to drop into place once the lever is released.



Your weapon was shipped with basic pop-up sights installed.

There are an almost unlimited variety of sights/scopes and mounting options available in today's market that allows the purchaser to choose what they prefer. The factory installed handguard is either a Picatinny® rail type, M-LOK® or similar style and may be a combination of multiple styles that allows you to install the sights and other accessories of your choice. These are very robust assemblies but can be damaged installing accessories. Please follow the manufacturers' instructions to properly install and calibrate the sights and accessories you choose paying very close attention to the various torque specifications, so you do not overtorque and damage the mounting assembly. If you have any questions about the proper mounting of any accessories, please check with your local professional gunsmith.



INITIAL CLEANING

Your weapon was test fired at the factory to ensure safety and quality control. It was subsequently cleaned, but there may be some remaining residue in the chamber or barrel. Prior to the first time you fire the weapon, run a cleaning rod with a lightly oiled patch through the barrel from the chamber to the muzzle. Repeat until you have a clean patch. Never run a patch or bore brush from the muzzle to the chamber. To accomplish this, mount the weapon in a gun bench vise or table mount if available. This step is not required but makes the following procedures much easier.



CLEARING THE WEAPON

To CLEAR the weapon, follow these steps:

1. Remove the magazine if installed.
2. Pull the charging handle to the rear and visually verify there is no round in the chamber.
3. Release the charging handle and allow the BCG to slam forward and seat. Do not “ride” the BCG forward with the charging handle.
4. Place the Safety Selector switch to SAFE.





Locate and depress the rear takedown pin to its full extension. Rotate the barrel assembly on the front takedown pin. Remove and inspect the bolt carrier group (BCG) and wipe off any excess oil. There is no need to disassemble the BCG. Visually inspect the chamber and bore. Run the cleaning rod through the bore as described above. Once complete, reinstall the charging handle, the BCG and push them forward to seat them. Rotate the barrel and reset the rear takedown pin.



FUNCTION CHECKS

To complete a FUNCTION check, follow these steps:

1. Clear the weapon as described above.
2. Install an empty magazine in the weapon.
3. Pull the charging handle all the way to the rear. The bolt catch should hold the bolt to the rear position. Push the charging handle forward until it latches.
4. Remove the magazine from the weapon. The BCG should remain locked to the rear.
5. Press the bolt catch. The BCG should rapidly move forward from the buffer spring tension.
6. Ensure the Safety Selector switch is on SAFE.
7. Press (squeeze) the trigger. The hammer should not fall.
8. Place the Safety Selector switch to FIRE.
9. Press (squeeze) the trigger and hold it to the rear. The hammer should fall.
10. While holding the trigger to the rear, pull the charging handle to the rear and release it.
11. Release the trigger and you should hear and feel a “click”.
12. Press (squeeze) the trigger again and the hammer should fall.



WARNING!! IF ANY OF THE ABOVE STEPS DO NOT OCCUR AS LISTED, DO NOT FIRE THE WEAPON. CONTACT THE MANUFACTURER OR A LOCAL GUNSMITH PROFESSIONAL AND HAVE THE WEAPON INSPECTED AND REPAIRED.

AMMUNITION

Use only original high-quality, factory loaded ammunition specifically for this caliber weapon. The correct caliber is permanently engraved on this weapon. THE USE OF RELOADED, REMANUFACTURED, STEEL CASE, HAND-LOADED OR OTHER NON-STANDARD AMMUNITION VOIDS ALL WARRANTIES! Do not use ammunition that is dirty, wet, corroded, bent or otherwise damaged. Never oil cartridges. Do not spray aerosol type lubricants, preservatives or cleaners directly on ammunition. This can lead to a dangerous malfunction.

If any of the following occur, immediately cease firing, put the weapon on safe, keep the barrel pointed in a safe direction and check the chamber and barrel:

1. You have difficulty or feel unusual resistance in chambering a cartridge
2. A cartridge misfires or doesn't go off
3. The mechanism fails to extract a fired cartridge case
4. Unburned grains of propellant powder are discovered spilled into the mechanism.
5. A shot sounds weak or abnormal

If you suspect a bigger problem than a simple mis-feed, DO NOT resume firing and have your weapon checked by a qualified gunsmith.

WARNING!! IF A BULLET IS IN THE BORE, DO NOT ATTEMPT TO SHOOT IT OUT BY USING ANOTHER CARTRIDGE, OR BY BLOWING IT OUT WITH A BLANK. SUCH TECHNIQUES CAN GENERATE EXCESSIVE PRESSURE AND SEVERELY DAMAGE THE FIREARM AND/OR CAUSE SERIOUS INJURY.



LOADING

TIPS:

1. Always make sure the weapon muzzle is pointed in a safe direction.
2. Never load or unload a firearm in a vehicle, building or other enclosed space (unless it is a properly constructed shooting range). The risk of an unexpected or accidental discharge is always there during these procedures and can result in severe injury or death.
3. Always check the firearm for proper function PRIOR to loading a magazine or round in the chamber.
4. Remove excessive grease or oil from the bore and chamber prior to loading.
5. Visually inspect the bore for any obstructions, cleanliness or damage prior to loading.

To LOAD the weapon:

1. Clear and Safe the weapon as described above.
2. Insert a loaded magazine into the magazine well and apply upward pressure until you feel it seat. You may tap it with your hand to seat it but never use anything to pound it into position.
3. Pull down on the magazine to ensure it is seated properly. If not, repeat step 2.
4. Pull the charging handle all the way to the rear and release. Visually ensure the bolt is seated fully forward. (DO NOT RIDE THE BOLT FORWARD)
5. The weapon is now loaded.



FIRING

1. Keep the muzzle pointed in a safe direction and your finger off the trigger when placing any weapon into battery (ready to fire).
2. Press (squeeze) the trigger slowly and carefully with your index finger, keeping the sight aligned with the target. If the trigger is jerked, you will most likely miss the target due to movement of the gun. If you anticipate the recoil, you will jerk the weapon off target. The pressure must be applied smoothly and evenly between the tip and first joint of the finger. Press slowly and carefully until the weapon discharges. It should almost be a surprise when it fires. Breathing techniques will impact your point of aim and accuracy. Essentially, take a deep breath, let it out normally until you hit the natural pause in your breathing pattern, then carefully aim and press the trigger. Speed will come with practice.
3. Never carry, carelessly handle or otherwise leave unattended any firearm in which the safety is off and is ready to fire.
4. Never fire any semi-automatic weapon with your finger, hand, face or other body part over or adjacent to the ejection port or in any position where you may be struck by the reciprocating movement of the bolt carrier group. Both the ejection of the empty cartridge cases and movement of the bolt carrier group are part of the normal operating cycle of a semi-automatic weapon and pose no safety hazard to the shooter if the firearm is held in a normal grip and fired as intended by its design.
5. Never allow other people to stand next to you where they might be struck by an ejected cartridge case. The case will be hot and can cause a burn or cut injury, especially if no eye protection is worn. Make certain there is a clear unobstructed path for safe ejection of the fired case.
6. Immediately cease firing, put the weapon on safe, keep the barrel pointed in a safe direction and check the chamber and barrel if any of the following occur:
 - a. You have difficulty or feel unusual resistance in chambering a cartridge
 - b. A cartridge misfires or doesn't go off
 - c. The mechanism fails to extract a fired cartridge case
 - d. Unburned grains of propellant powder are discovered spilled into the mechanism.
 - e. A shot sounds weak or abnormal



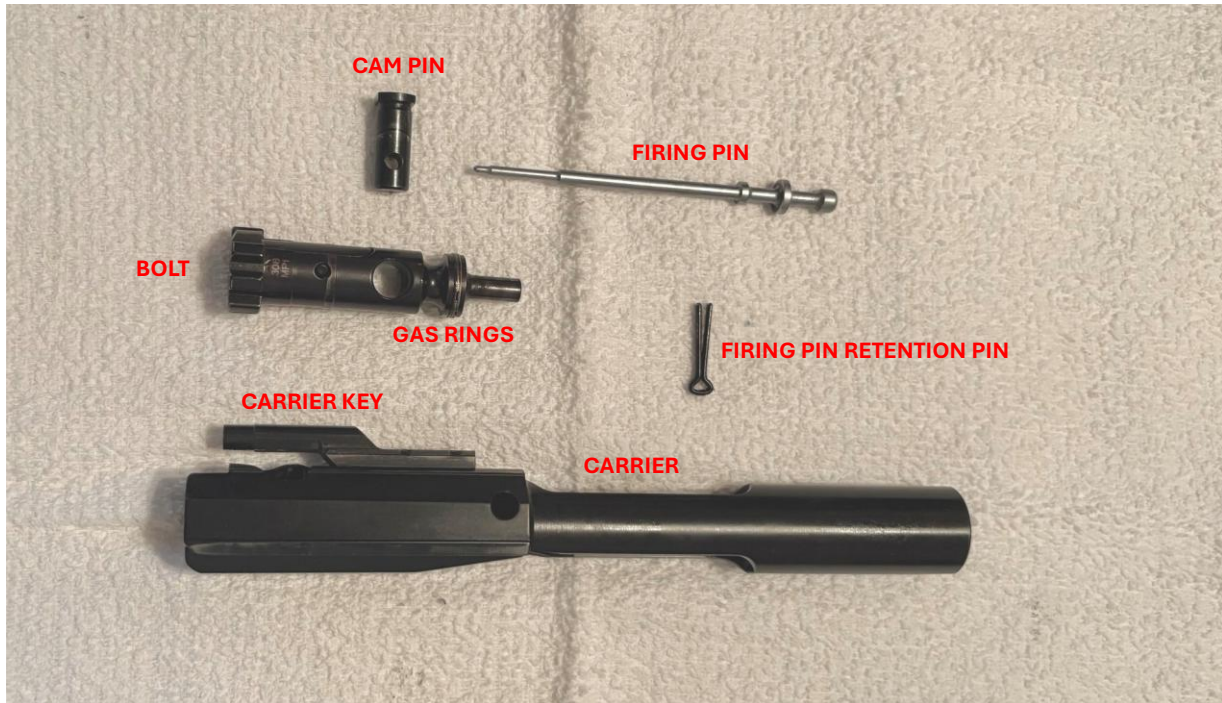
- f. If you suspect a bigger problem than a simple mis-feed, do not resume firing and have your weapon checked by a qualified gunsmith.
7. While shooting any semi-automatic firearm, an unfired cartridge case may become jammed between the bolt and the barrel. Clear the jam as follows:
 - a. Keep the muzzle pointed in a safe direction
 - b. Remove the magazine by pushing the magazine release.
 - c. Pull back the charging handle and lock the bolt to the rear with the bolt catch.
 - d. Return the charging handle to its forward and locked position.
 - e. The jammed cartridge or case may now be removed by shaking the weapon or picking it out. ALWAYS KEEP YOUR FINGER OFF THE TRIGGER UNTIL YOU ARE READY TO FIRE!!

CLEARING AND UNLOADING

WARNING: THE FOLLOWING STEPS MUST BE ACCOMPLISHED IN THE ORDER SHOWN. IF THE MAGAZINE IS NOT REMOVED FIRST, YOU WILL LOAD A ROUND INTO THE CHAMBER WHEN YOU RELEASE THE CHARGING HANDLE AND THE BCG MOVES FORWARD.

1. Point the weapon in a safe direction and place the weapon SAFETY SELECTOR on SAFE. If it will not go into the SAFE position, pull the charging handle to cock the weapon, then release the handle. DO NOT PULL THE TRIGGER! Place the SAFETY SELECTOR lever to SAFE.
2. Push the magazine release button and remove the magazine.
3. Pull the charging handle to the rear and visually look into the chamber to ensure there is no round in there.



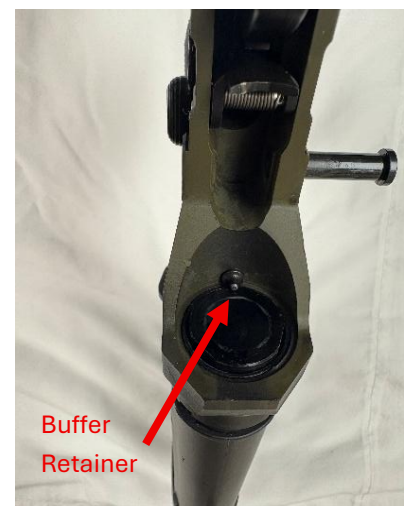
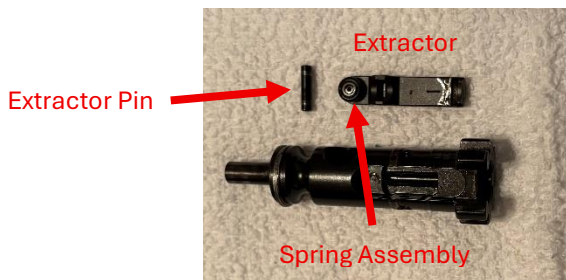
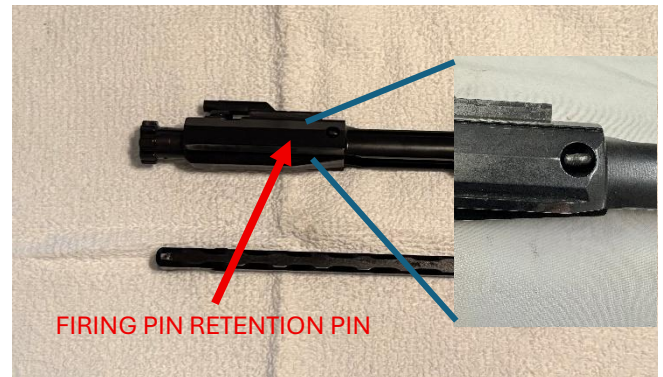


DISASSEMBLY

1. Clear the weapon as discussed above in CLEARING AND UNLOADING.
2. Push the rear takedown pin in as far as it will go. If it is very tight, use the appropriate sized brass punch and lightly tap it with a nylon hammer. DO NOT HAMMER ON THE TAKEDOWN PIN. Push the forward FRONT PIVOT PIN in as far as it will go. If it is very tight, use the appropriate sized brass punch and lightly tap it with a nylon hammer. DO NOT HAMMER ON THE FORWARD PIVOT PIN.
3. Separate the upper and lower receiver.
4. Pull the charging handle to the rear and remove the Bolt Carrier Group. Move the charging handle fore or aft until the charging handle is in the grooves and remove charging handle from the upper assembly.
5. Move the bolt assembly to the forward position and remove the firing pin retention pin.



6. Push the bolt assembly towards the carrier into the locked position.
7. Turn the BCG on end and catch the firing pin. Place it in a safe place. (NEVER USE THE FIRING PIN AS A PUNCH)
8. Turn the Cam Pin and lift it out of the carrier. This may be sticky until the weapon is broken in and may require gentle prying with a flat tipped screwdriver to remove it.
9. Remove the bolt from the carrier assembly.
10. Use an appropriate sized punch to remove the extractor pin by pushing down on the rear of the extractor and gently pushing the pin out. DO NOT REMOVE THE SPRING ASSEMBLY OR INSERT OR "O" RING.



11. Depress the buffer retainer and carefully remove the buffer body and buffer spring from the lower receiver assembly.

CARE AND MAINTENANCE

1. The weapon may be lubricated and cleaned under normal conditions without the need of complete disassembly.
2. In special circumstances, (such as repairs) when disassembly is necessary, it is recommended that the weapon be returned to the manufacturer or a Factory Authorized Gunsmith.
3. To keep the weapon in excellent condition, it must be kept clean and covered with a light coat of good quality gun oil to prevent corrosion. In normal storage conditions,



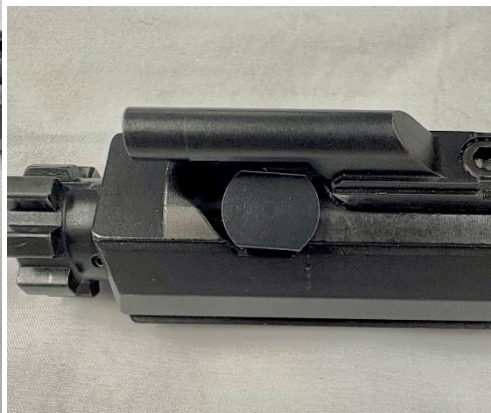
occasionally wiping the weapon down and reapplying a light coat of oil will prevent corrosion from occurring to the natural oils on our hands being transferred during normal handling. If putting the weapon into long term storage, use high-quality cleaners, lubricants and preservatives and thoroughly clean and lubricate the weapon. Do not continuously expose the weapon to rags or cloth that will attract moisture.

4. Cleaning after shooting. It is especially important to remove all powder residue from the barrel, chamber and bolt carrier group and adjacent areas using a high quality medium density nylon brush and good quality gun cleaning oil. Never use a brass or steel bristle brush on the finished portions of the weapon or you will damage the anodizing finish, paint and cause areas to be exposed to corrosion that were protected. Brass brushes may only be used on the interior of the barrel, the chamber and the bolt face if required. It is highly discouraged to use a steel bristle brush for any cleaning procedure of this weapon as that can permanently damage the protective finish.
5. Pipe cleaners, Q-tips, bore patches, clean rags and an assortment of nylon and brass brushes along with the appropriate cleaners, lubricants and protective agents is all that is needed to properly maintain this weapon for many trouble free years of use. Always make sure that you double check small areas to make sure a piece of cotton is not stuck inside a part or assembly that could cause a malfunction.
6. Anytime you break the weapon down to clean it, give it a good visual inspection checking for any damage, abnormal wear and general condition and security. If you find any of the above-mentioned issues, contact a local gunsmith and have them inspect for serviceability.

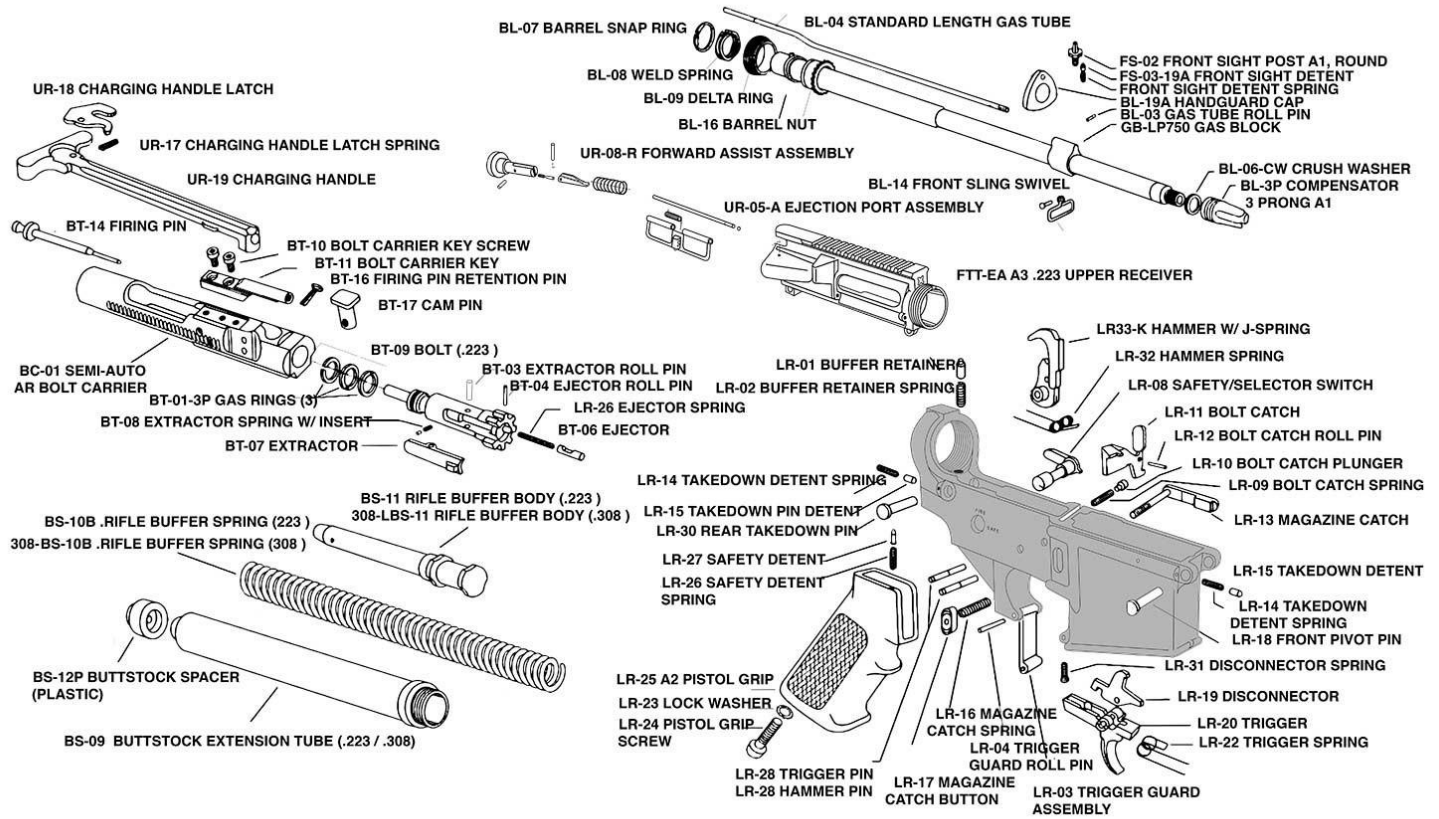
REASSEMBLY

1. Insert the buffer spring and buffer back into the lower receiver assembly. Push them to the rear of the weapon until the buffer retainer is holding them in place.

2. Insert the extractor back into position on the bolt, making sure that the spring assembly is in position (Large end of the spring is in the extractor). Push down on the extractor and reinsert the extractor pin.
3. Carefully insert the bolt assemble into the carrier just far enough to reinsert the cam pin. Insert the cam pin.
4. Insert the firing pin into the back end of the carrier and shake the carrier until it moves into place.
5. Pull the bolt assembly forward, and holding the carrier vertically, push the firing pin down against the firing pin spring and insert firing pin retention pin into the hole on the side of the carrier until it is fully seated. This may require a pair of needle nose pliers to fully seat the pin. **DO NOT HAMMER ON OR BEND THE ENDS OF THE PINS OR SEPARATE THEM AS THIS MAY CAUSE DAMAGE.**
6. Reverse the bolt and shake it to ensure the firing pin doesn't fall out.
7. Place the charging handle in the grooves and insert the bolt carrier group into the upper receiver and push forward to seat.
8. Ensure that the hammer is cocked. If it's not, use your thumb and push it down to the cocked position.
9. Join the upper and lower receivers starting with the front pivot pin. Line up the pin and push it fully closed.
10. Align the rear takedown pin and push it until fully closed.
11. Perform a FUNCTION CHECK as listed above.



EXPLODED VIEW OF AR-10/15





TROUBLESHOOTING

PROBLEM	CHECK	SOLUTION
Weapon won't fire	Safety Selector on SAFE	Move Safety Selector to FIRE
	Improper assembly of Firing Pin	Correctly assemble bolt
	Bolt carrier group for excessive oil	Wipe off excessive oil
	Defective ammunition	Discard
	Bolt Carrier Group for excessive carbon	Clean Bolt Carrier Group
Bolt will not lock into place	Bolt for excessive carbon	Clean Bolt
	Damaged or broken Bolt	Contact BA Arms®
	Ejector Stuck	Contact BA Arms®
	Barrel locking lugs for excessive carbon	Clean locking lugs
Bolt won't extract cartridge	Broken Extractor Spring	Replace with OEM Part
	Missing springs/rings from extractor	Replace with OEM Part
	Dirty or poor ammunition	Discard
	Excess carbon in chamber	Clean chamber
	Stuck or worn extractor	Remove and Clean
	Buffer assembly	Remove and Clean as required
	Bolt Carrier Group restricted movement	Remove, Clean and Lubricate
	Clogged Gas tube	Replace with OEM part
Weapon won't feed	Magazine not seated	Reseat. If still problematic, adjust magazine catch
	Dirty or poor ammunition	Discard
	Defective or dirty magazine	Remove and clean or replace
	Magazine with too many rounds	Remove excess rounds
	Buffer assembly	Remove and Clean as required
Double Feed	Magazine	Replace
Weapon won't chamber	Ammunition	Discard dirty or poor ammunition
	Ejector stuck	Remove, clean and lubricate
	Excessive Carbon in Chamber or BCG	Clean



<u>PROBLEM</u>	<u>CHECK</u>	<u>SOLUTION</u>
Short Recoil	Bolt ring worn or too loose	Replace
	Excessive carbon outside of gas tube or in carrier key	Clean
	Debris in carrier key	Remove
	Loss of Gas Power	Check entire gas pathway
	Reloaded or Remanufactured ammunition	Discard and use factory ammunition
	Dirty Weapon	Clean
	Lack of Lubrication	Lubricate correctly
Bolt fails to lock OPEN after last round	Magazine	Replace
	Bolt catch malfunction	Clean or Replace
Safety Selector lever binds	Lubrication	Lubricate
Bolt Carrier "Hung"	Round jammed between bolt and charging handle	a. Remove Magazine
		b. Push in on bottom of bolt catch
		c. CAREFULLY strike ground with buttplate. Bolt should shift to the rear.
		d. While bolt is held to the rear, round should fall out through magazine well
		If this fails, use a cleaning rod to push bolt back through ejection port



PARTS

All firearms require periodic maintenance and inspection. We recommend that you have your firearm inspected annually by a qualified gunsmith. This inspection may reveal a need for adjustment or repair. Breakage, corrosion, improper functioning due to undue wear and tear may not be apparent during an external inspection.

If you notice any mechanical malfunction, immediately STOP using the weapon. Unload and clear the weapon, put it on SAFE and take it to a competent gunsmith. If water, sand or other foreign matter enter the internal mechanism, the firearm should be completely disassembled and completely and thoroughly cleaned. Failure to perform reasonable maintenance and keep your firearm in good working order can lead to a potentially dangerous situation.

BA Arms maintains replacement parts for our currently manufactured firearms. BA Arms weapons use only high-quality original manufacturers parts and components.

Most gunsmiths have the knowledge and skills to make parts if required, but BA Arms has no visibility on the quality or ability of any individual gunsmith and it is completely beyond our control. Should your firearm ever need service, we strongly recommend you return it to BA Arms. **UNAUTHORIZED ADJUSTMENTS, NON-FACTORY AUTHORIZED PARTS OR REPAIR/ REPLACEMENT CAN VOID YOUR WARRANTY!** BA Arms offers a free “tune-up” every 5000 rounds. Please see our Warranty Card for specific details.

BA Arms
217 Corsair Drive
Georgetown, Texas 78628

04132025-Rev 0
©2025 BA Arms