



THE ENTRANCE TO PEACE AND COMFORT

Taconic Lake Association



Branch Post Office

PETERSBURG, N. Y.

R.F.D.

TACONIC LAKE ASSOCIATION

A membership corporation incorporated under the laws of the State of New York July 13th, 1901, the certificate of incorporation providing as follows:

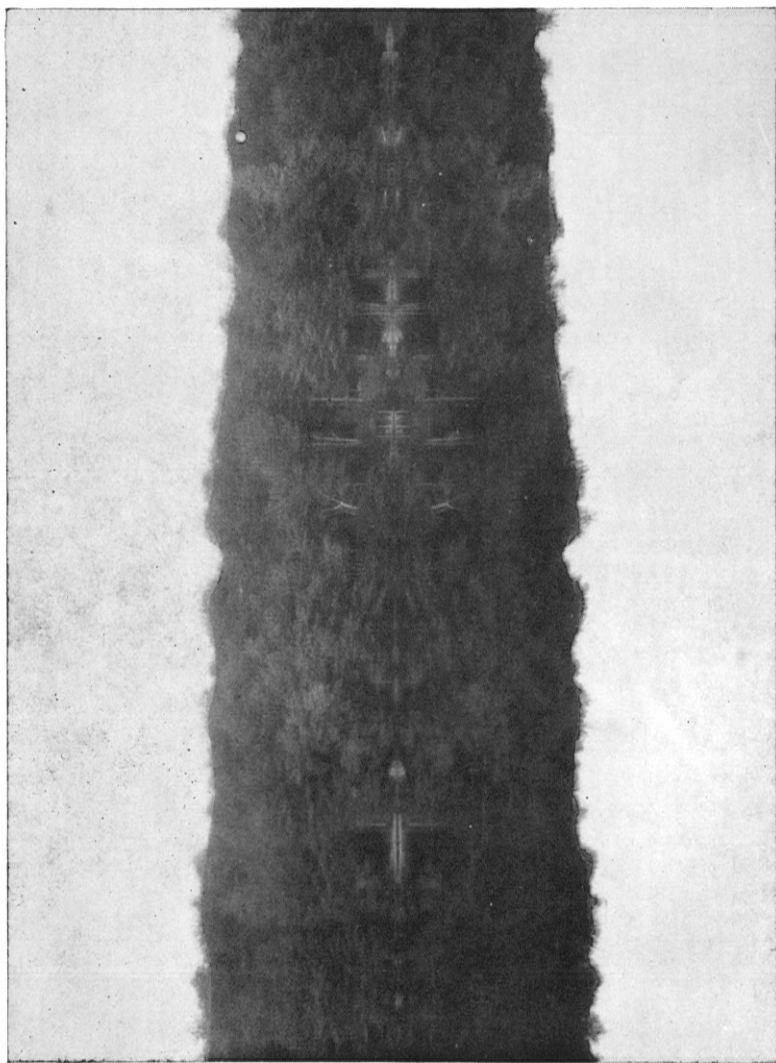
" (2) The particular business and object of this Association will be the promotion of the social and recreative pleasures of the members of the Association; to acquire control of a parcel or parcels of land in the Town of Grafton, Berlin, Petersburg and Poestenkill, in the County of Rensselaer, State of New York, for the summer residence of the members of the Association and to regulate the occupancy of said land by the members of the Association."

BOARD OF GOVERNORS

Frank P. Tucker, Albany, N.Y.
Thomas G. Keays, Troy, N.Y.
Henry S. Lisk, Troy, N.Y.
Julia C. Eckert, Albany, N.Y.
John Comesky, Troy, N.Y.

President
Vice-President
Secretary
Treasurer
Trustee

The Taconic Lake Totem Pole



or
A Perfect Reflection

Note: Turn on sides and guess which is shore and which the reflection.

Description of Taconic Lake Summer Colony

LOCATION

Taconic Lake is in the town of Grafton, Rensselaer County, five miles from Grafton Village.



Approaching Lake

DISTANCES

It is twenty-seven miles from Albany City Hall, on excellent hard road via Menands bridge; twenty miles from the business center of Troy and thirty-two miles from Schenectady. It is therefore within easy daily driving distance from Albany, Troy, Schenectady, Cohoes, Rensselaer or Watervliet.



Store, Post Office and Pavilion

OWNERSHIP - MEMBERSHIP

Ownership of property is vested in the individual title holders and carries with it membership in the Association.



CONTROL

The Association business is conducted by an organized board of Governors who are elected by the entire membership at annual meetings held on the first Saturday



of August each year at two o'clock p.m., any member being eligible as a board member and each having one vote.

The Governors elected by the membership organize by election of a President, Vice-President, Secretary, Treasurer and appointment of committees. All serve without compensation.

The property is controlled by the Association which is limited to sixty members (cottages), there now being forty-five members and forty-three cottages.



Canoeing

OWNERSHIP RESTRICTIONS

A member may own more than one contiguous lot under warranty deed subject to Association rules but cannot own more than one cottage. This precludes the possibility of purchase of control by any one person or corporation.

Members may sell and transfer properties by deed to those approved by the Board of Governors as new members, on payment by such new members of the membership fee of one hundred dollars (\$100.00). Purchasers must apply for membership and be approved before being entitled to own property.



A Private Dock

SIZE of LAKE

The lake is small ($1\frac{1}{2}$ miles around it), is fed entirely by springs with underground outlets except overflow for high water season.



Association Bathing Beach

WATER QUALITY - USES

The water is pure, can be used for cooking or drinking and is unexcelled for canoeing or bathing. The fish include "Bass, Pickerel, Perch, Sunfish and Bullheads."



Looking Across

COLD SPRING

In addition to the lake water there is available to all a never-failing spring with pure water of almost ice-cold temperature.



Bound for the Beach

HIGH ELEVATION - TEMPERATURE

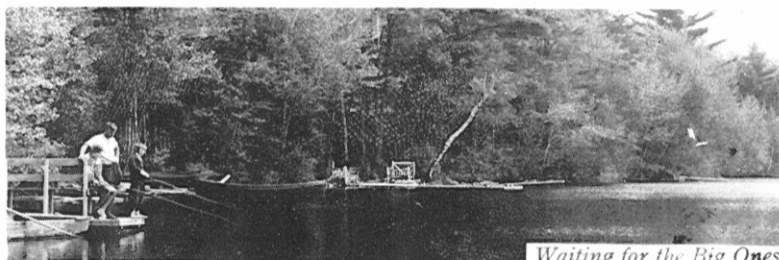
Elevation above sea level is 1800 feet and the summer temperature is never above 80 degrees and nights are cool for sleeping, with blankets necessary at all times.



Cottages in the Trees

ASSOCIATION

The Taconic Lake Association is a limited membership corporation, incorporated in 1901 and controls about 500 acres, including lake, woodland, cottage sites, store and post office property, pavilion, private bathing beach, roadway around the lake in rear of lake shore cottages; also a ten foot reservation all around the lake shore.



Waiting for the Big Ones

ASSOCIATION SERVICE

Garbage removal, telephone, store, post office and all taxes are paid by the Association from annual membership dues of \$40.00 entitling to ownership of one cottage. Additional dues of \$5.00 for each extra lot owned.

The store is open and mail service is provided from June 1st to October 1st of each year, with courteous persons in attendance every day and until ten o'clock p.m. A line of staple groceries, ice cream, candy and soda is always available.



A Restful Spot

A DESIRABLE PLACE TO BE

Excellent place for children or those desiring a real vacation with all comforts and modern conveniences with quietness, as no noisy night life is permitted.

The present membership of forty-five (1941) is composed of congenial persons from six different states; New York, New Jersey, Pennsylvania, Connecticut, Vermont, Massachusetts, Florida; and from seventeen different cities in those states.

THE TENNIS COURT

An Association tennis court is maintained for those who wish to play.



A Bit of Shore Line