



KINGDOM
EDUCATION MISSION

KINGDOM

Education Mission

24 June, 2024

De,

Rev.Dr. Dashi Tu Ring (Th.D)

School Administrator

Nazareth School of Leadership and Vocational Education (NSLVE)

Mayzali Tawng, Manhkring, Myitkyina, Kachin State.

Ginlam: : Magam Bungli Ta Gindun Sa wa lu na matu Bawngban jahkrup ai lam

Hkungga let,

Lahta na ginlam hte seng nna, Nazareth School of Leadership and Vocational Education (NSLVE) ni hpang de, KEM – VERP program management team ni kaw nna, laika the hkrum shaga bawngban dat ga ai law. Kingdom Education Mission society kata na, magam bungli langai rai nga ai, KEM-VERP Finland program (Kingdom Education Mission-Vocational Education, students Recruitment Program) hpe 2024 ning, July shata kaw nna, hpang sa wa na masing hkyen da ai hta, masha law law a matu, akyu pru, tang du ai hpaji sasana amu magam bungli tai wa lu na maatu, Hkawp hkungga ai, NSLVE hte ta gindun mayu ga ai majaw bawngban jahkrup dat ga ai.



+358465947284

+66983455239



kingdommission.edu@gmail.com



Ilveskatu 2B 23,
Lahti, Finland



KINGDOM
EDUCATION MISSION

KINGDOM

Education Mission

24 June, 2024

1. Ta Gindun Galaw Sa wa na magam bungli

- Finland mungdan de, High vocational program hte jawnglung let bungli sa galaw na jawngma ni hpe jawng shawkw shawn ya ai lam
- English Laika (Duolingo Test preparation+ upper intermediate class) hkyen lajang ya ai lam
- Finnish ga, laika hpe online hku nna, sharin ya ai lam
- Vocational certificate langai langai ngai lu hkra tatut sharin dat ya ai lam (Nazareth School of Leadership and Vocational Education (NSLVE) a certificate jaw ya ai lam
- Jiwoi mungdan hta High vocational training School masing hpe tatut hkrang shapraw sa wa lu na matu (aten galu masing)

2. KEM a shingdu labau hte galaw nga ai magam bungli ni, matut galaw sa wa na magam bungli ni hpe kapyawn tang madun da ga ai.

3. Ta gindun galaw sa wa lu na matu, myithkrum masat laika hpe mung kapyawn let shagun dat ga ai law.

Karai Kasang a mungdan maden jat wa na, hpaji sasana dat kasa magam bunli hta, KEM-HEMT a gawng malai,hkungga let ,

Sara Sumlut YaKu (B.Th, M.Ed E.A (Study,TRSU, Thailand))

Program Manager

Email; yakusumlut12@gmail.com,

Ph no; +66983455239,

Address; 1 Moo 6, Rangsit-Nakornnayok Road, Klong(14) ,Bungsan, Ongkarak,
Nakornnayok 26120, Thailand.



+358465947284

+66983455239



kingdommission.edu@gmail.com



Ilveskatu 2B 23,
Lahti, Finland

KINGDOM

Education Mission



KINGDOM
EDUCATION MISSION

24 June, 2024

2. Nature

Kingdom Education Mission is instituted upon the principle of a multi-partnership mission. Indeed, Kingdom Mission Society (KMS) launched the mission under the vision of education services through the collaboration of regional churches, namely Kachin Baptist Churches and Kuki Churches of Manipur, Baptist Churches of Nagaland, Singpho Baptist Community and Churches of Assam and Arunachal. It is a church-based education promotion that the students being educationally victimized due to such civil war will find their services to be met toward church and society in turn. Being a self-transformed mission, we believe that an education service is a right attitude for a just-formation in church and society by the will and the wisdom of the RULER of the UNIVERSE. Having established upon the rock of biblical-faith-principles, an educating mission is regarded to be the one to discern the merit and the fear of God, the joy to persevere following God's commandments. Thus, an education impetus is to impart one to be new chosen being to be consistent in his/her discipleship under the spiritual guidance of Jesus Christ. The mission is designed in such a way to train students in that of a British academic system. Moreover, it is to train the students to be a good and civilized citizen that the norm of Christian faith and the wisdom of the Bible brings out to create a secure and harmonious democratic environment.



+358465947284

+66983455239



kingdommission.edu@gmail.com



Ilveskatu 2B 23,
Lahti, Finland



KINGDOM
EDUCATION MISSION

KINGDOM

Education Mission

24 June, 2024

3. Philosophy

A “self-impelling agenda” that exercises the given freedom of educational option rewards one to be the master of one’s future.

4. Vision

Education is the right co-counselor for the victimized students until the times they are capable to establish the reign of God in their war-torn zones in security and unity in Burma.

5. Mission Statement

Education facilitates the message of victory over a slavery system of education (that enslaves an equal liberation guaranteed in the Bible and a democratic civilization today).

6. Goals

- It is to rerun church-based and mission schools as Burma has been in her democratic transition.
- It is to design a just rule through the service of education and leadership in society.
- It is to initiate a teaching-learning environment from the ignorant schemes of generations.
- It is to generate qualified educators, teachers, and leaders in need.



+358465947284

+66983455239



kingdommission.edu@gmail.com



Ilveskatu 2B 23,
Lahti, Finland



KINGDOM

Education Mission

24 June, 2024

7. Objectives

- To reorient the victimized students to the learning path and lifestyle despite being a lack of educational accessibilities.
- To train the committed students in Mission Schools and Schools via international academic norms as far as possible that they may be informed science, arts, and commerce in the level their education-persuasion.
- To equip them to teach in mission schools, colleges, and institutions back their location in Burma.
- To enhance a cooperative service for the Kingdom of God's sake through education and training take on in the church, theological institution, and mission school.
- To generate good leaders and matured counselors who could endeavor in the formation of learning and just society back home.

8. Background & History: The Kachins, American Baptist Missions, Mission Schools & Kachin Regions

Kingdom Education Ministry is considered to be one of the offsprings of the holistic mission-heritage of the Kachin Baptist Convention (KBC). Technically, Kingdom Education Mission operates its mission activities which are directly associated with Kachin Baptist Churches of KBC since the very beginning. Kachin Baptist Convention has been its main backbone in terms of the denominational institution as KEM shares its baptist norms, practices, and principles. From the point of the mission, the word “Kachin” had been coined around A.D 1837 upon the finding of the American Missionary Eugenio Kincaid who projected that "the Kachins" are the landlords of Northern Burma, the Kachinland. Followed by American Baptist Missionaries led by Albert J. Lyon, Williams H. Roberts, Ola Hanson ... after about four decades, the “Kachins” had been made known to “A God’s Nation.” The Kachin is comprised of seven major groups, namely Jinghpaw, Azi, Maru, Lashi, Lisu, Nung, and Rawang. It has observed that the American Baptists' mission activities among the Kachins had been successful shortly.



+358465947284

+66983455239



kingdommission.edu@gmail.com



Ilveskatu 2B 23,
Lahti, Finland



KINGDOM

Education Mission

24 June, 2024

One of the reasons for the success of the early mission was due to the implementation of the educational approach. It is noteworthy to describe that there were three known mission high schools, namely KBMS (Kachin Baptist Mission School) Myitkyina, Sinlum Mission School, Sinlum, Manmaw, NCS (National Christian School) Kutkai. Those three mission centers also had turned to mission centers where new Christians got trained the norm of Christian principles and respectful manner. Traditionally, the missionaries put their maximum input in training new Kachin converts for the service and leadership of church and community.

Meantime, those mission schools were outlawed to run anymore and almost all their compounds and mission centers were nationalized simultaneously under the coup-Newin's regime in 1962 across Burma. The Baptist seems to be the major target of the operation. From that day onwards, Christians and citizens of Burma have been victimized under the military yoke, except being entertained by the Burmese-socialist-education system till today. Meanwhile, those plots of victimizations overall ethnic peoples, especially, Christians, have been doubled under the form of military dictatorship and then, followed by a chronic civil war in ethnic states particularly Shan, Kachin, Kayah once the Burman military regime took up its power in 1962. The fact is that the Burman group's denial in the formation of federalism that had led the Union under the plot of Newin's coup. That had resulted in to opt armed solutions for Ethnic groups in their state respectively. It is to procure a federal democratic system that would guarantee the implementation of equality and equal power-sharing between the Burman groups and Ethnic groups. In reality, ethnic nationals are co-founders the Union according to the Panglong agreement. However, the resuming civil war in Ethnic states since 2011, especially in the Kachin State and certain regions of Northern Shan state, has proved of the Burman military campaign that dismantles the system of a federal democratic union. Having the ongoing civil war escalated, it has left more than 1.5 lacs Internally Displaced Persons in the Kachin army-controlled areas and the Burmese controlled areas since June 2011. Consequently, all sorts of violation of rights have been continued in all frontal lines wherever the Burmese troops have encroached in Kachin land such as killings, rape, torture, sexual assaults, forced labors, threats, stealing, robbing and so on. The most significant is that more than 300 villages have been destroyed and desolate since the rescuing war broke up in Kachin regions. Of which hundreds of Kachin Baptist Churches have been deliberately targeted to have demolished by the Burmese troop in war.



+358465947284

+66983455239



kingdommission.edu@gmail.com



Ilveskatu 2B 23,
Lahti, Finland



KINGDOM

Education Mission

24 June, 2024

Thus, Kachin Christianity has been spiritually and emotionally traumatized and despaired to carry out further missions such as church planting, and leadership promoting ministries at this juncture. Indeed, the most painful thing for church and society is due to the loss of basic education for about 40000 students sheltering in those temporary camps some of which station along the Sinno-Burma border in the Kachin controlled areas and the rest in the government administrative areas in the Kachin state.

It has been more than six decades that the citizens of Burma have been constructed under the system of Burmese education. It completely abandoned the English language and British education system followed by the prescription of ethnic textbooks by one's language in each State. Burmese education might be good for their Burman people since all the academic design and curricula had been designed in such a way to meet the agenda of Burman homogenization. Whereas, for non-Buddhists, the existing education system is considered to be a local-colonial agendum in our own country. In this crucial and critical condition, Kingdom Education Mission has taken its risk to have inclusively launched it in Burma for three practical reasons. 1) It is to keep the value and the spirit of the Panglong promise that the founding fathers agreed to erect the banner of the Union of Burma as per the value/political principle of federal democracy in 1948. 2) It is to revitalize and re-maintain the Christian education standard grounded first and foremost upon the education foundation by Judson's college. The college was founded by the effort and the name of Adoniram Judson, the first American Baptist Missionary to Burma. And, 3) KEM is to get along with the service and contribution as per democratic value/norms. Since Burma is being transformed toward its full stature in a democratic culture, KEM has cooperatively taken this initiative into this education partnership mission without discrimination any student based on one's racial and religious differences. In response to this urgent need in this situation, KEM has been humbly launched for the students of war-torn zones within and without the Kachin State in 2010. Admittedly, the inspiration of KEM founders and partners alike have been driven to this call by the heritage of Baptist missionaries namely, William Carey and Adoniram Judson who had founded Christian schools and transformed millions and millions of lives both Christians and non-Christians. Of course, their education contribution got inaugurated Asia into the age of renaissance.



+358465947284

+66983455239



kingdommission.edu@gmail.com



Ilveskatu 2B 23,
Lahti, Finland

KINGDOM

Education Mission



24 June, 2024

9. Kingdom Education Mission Amid Its Challenges

In response to the need for Church and Humanity in Burma, the education mission takes the role to play a social movement for a social transformation in the same trend that of a democratic education system that does so. At the same time, it has been a challenge for us to inherit the legacy of Baptist's mission schooling system to a certain degree and enhance its holistic services for social justice and peace still under a democratic scapegoating Burmese regime, still backed up by the military might in the region. Nevertheless, KEM stands on the principle of a joint mission between Kachin Baptist Churches and churches of this region to march to fulfill the unfinished task left by the past missionaries. It is to establish God's kingdom in the region in ways to educate teachers and pastors and leaders of churches and society without a gap. Thus, the students are challenged to be trained spiritually, emotionally, and intellectually for the empowerment of holistic leadership in Burma.

10. Mission Activities

○ Provision of High School and College Education

The Mission Society provides Basic High School education to enrolled students through the Kingdom Education networking initiation. Through this mission, the students get enrolled in schools and mission schools with the cooperation of respective partnering churches in Burma and India. To some students who pass out matriculation (Innova) in each school are given a further opportunity to pursue higher education in Secondary Colleges and Universities. Depending on students' nature and convenience of supervision some students are managed to place in Hostels, in boarding and rented hostels of KEM in each academic session. All this hostel management is done by Kohta Naw Ring, Hostel In-Charge, and his student assistants.

○ Kingdom Education Branch, Tamu

The Mission Society has run Kingdom Education House in Tamu since 2012 apart from its Main House Myitkyina. Tamu Education House is stationed in the mission compound of the Moyon Baptist Church Tamu. It has been one of the partner churches for the Kingdom Education Mission. There is a coordinating committee that runs Kingdom Education House Tamu. Layaw Awng was the In-Charge and Kohta Naw Ring, the Assistant In-Charge of the committee.



+358465947284

kingdommission.edu@gmail.com

Ilveskatu 2B 23,

+66983455239

Lahti, Finland



KINGDOM

Education Mission

24 June, 2024

KEHT is engaged functioning as a one-stop station for the students, guest house for the Committee, and parents. Moreover, the House is for fellowship center with Kingdom Education Mission Partners – the coordinating Mayon Church and individuals.

○ **Nawng-E-Hku Mission School**

Nawng E Hku Mission School has been a partnership mission of the Kingdom Mission Society and Nawng E Hku church. From 2011-2012 academic sessions, the British Education System has been mainly introduced at Nawng E Hku. The School was founded by Rev Nhkum Doi La of Sama Kachin Baptist Association in the Sino-Burma border. Current student enrollment turns 250 who all are from war zones with IDP status receiving their respective education ranging from KG till middle school. There is 14 full-time teaching staff that hold Bachelor/s and Bachelor of Divinity degrees respectively from Burma, India, and beyond. In three years Nawng E Hku will be Secondary College and it is hoping to enroll a minimum of 500 students since it has been almost ready for preparation in terms of academics, teaching staff, and infrastructure under the new principle of Naw Hkawng Maji.

○ **Fees and Financial System**

KEM runs by the annual fees of the students except for 10%. It is used for three areas: office administration, the gift of three staffs and enrollment and admission of each student in each academic year. Every year students are to be adjusted to pay 8 – 13 lacs of kyats according to school fees and location near and far. Every KMS has solved off settling 10-20% fees out of the total annual fees of the students who are badly in need of it. Students' annual fee is fully used just for the student's lodging/boarding and academic purpose.

○ **Shalom Shapawng Yawng Mission School, Inthem**

Kingdom Education Mission is a partnership educating mission with SSYS of Nthem Singpho Baptist Community Church, Inthem, Upper Assam. SSYS has started running in 2012 as the function of Mission of Church through Education in the context since the conversion mission into Christianity is constitutionally prohibited. SSYS has begun with 10 orphanage students under the leadership of Larin Lagyen, the principal. In the meantime, SSYS has been under its process of construction under the mission committee of SBC that is meant for entertaining 100-150 students.



+358465947284

+66983455239



kingdommission.edu@gmail.com



Ilveskatu 2B 23,
Lahti, Finland



KINGDOM

Education Mission

24 June, 2024

The school construction project seems to be completed just before the admission of students for the academic year, February 2014. The admission is opened for all students in them of Assam and Arunachal without discrimination based on religious, racial, and cultural differences. SSYS is the first mission school among Singhpos of Upper Assam and Arunachal's aftermath of more than two decades of the labor of Baptist missions. Kingdom Education Mission and SSYS of Singpho Baptist Church have been a mutual partnership and benefiting mission from the very stages of their initiations. This is how our partnership ministry has committed following the commission of Jesus for the extension of his church among all nations (Matt 28:18-20).

○ Board of Kingdom Mission Society

The Executive Body of Kingdom Education Mission is called the Kingdom Mission Society (KMS). Kingdom Education Mission has been launched by the vision and mission of KMS. The Executive Board of Kingdom Education Mission is comprised of 9 members.

- 1) Lahpai Shawng Htoi (Founder & Chairperson: B.Th; B.A-Q; B.D: M.Th-NT, STM, Drew University, Ph.D. Studies in the University of Texas at Dallas, USA).
- 2) Lala Ah Dau (Secretary-General: IR; B.D)
- 3) Hpauyu Awng Myat (Secretary-General: B.Th; LLB, B.D)
- 4) Maji Naw Hkawng (Principal, Nawng E Hku: B.Th; LLB, B.D; M.Ed)
- 5) Layawk Awng (Chaplain-in-Charge, Tamu: L.Th; M.Min)
- 6) Hpaula HkawngJa (Finance & Parent Guardian)
- 7) Larin Lagyen (BA; B.D Principal- Shalom Shapawng Yawng Mission School)
- 8) Kawhta Naw Ring (Hostel-In-Charge)
- 9) Hpalaw Naw Seng (B.Sc; M.Div)



+358465947284

+66983455239



kingdommission.edu@gmail.com



Ilveskatu 2B 23,
Lahti, Finland



KINGDOM

Education Mission

24 June, 2024

11. Meetings

With the initiation of Secretary-General, KES holds its Executive Committee meetings twice every six months (half academic year) at the main office. Tri-pot Mass meeting among committee-students-parent/guardian holds twice in a year in the main office in which reports of all respective offices are expected to give all in brief but to the point. Most importantly, a must-sharing session of the students to ECOM by the time that they are back at home for summer vacation at the end of every academic session is to be conducted once in a year is to be conducted.

12. Conclusion

Kingdom Education Mission is the multi-functional partnership body for the unanimous call of witnessing the realm of the Kingdom of God in individuals, church, and humanity in terms of teaching and learning discipleship in Christ Jesus. The working departments are formed with the consultation of the Executive Body for the success of the education ministry. They are Administrative Office, Academic Office, Finance & Property, Office of Student Parent Relation, Office of Faith & Spirituality, Hostel & Student Management, Partnership & Relationship.

In Christ Service,

Lahpai Shawng Htoi
(Kingdom Mission Society, Burma
Plano, Texas)



+358465947284

+66983455239



kingdommission.edu@gmail.com



Ilveskatu 2B 23,
Lahti, Finland



KINGDOM
EDUCATION MISSION

KINGDOM

Education Mission

24 June, 2024

Kingdom Education Mission

Vocational Education, Students Recruitment Program

Kanbau Hpaji Jawng, Jawngma shalat Shapan Masing

Pandung (Goal)

KEM gaw, Karai Mungdan a hpaji Shingni hpe ndau shana ya nga let, atsam hpring ai, kanbau hpaji mahkrum lamtam ai ya ai the jiwoi mungdan a matu, akyu rawng manu dan ai , Karai Mungdan A Hpaji Dat Kasa Ni tai nga na.

Yaw Shada Lam

1. Atsam ningja hpring ai, Kanbau hpaji, Hpungtang hpaji sharin la lu na mahkrum masa hpe lam tam matut mahkai ya nga na matu
2. Karai Jaw da ai, mungdan, lamu ga ni hpe hkrunggrin ngwi pyaw ai mungdan byin tai hkra, hpaji the bai wa gawgap lu ai ni law law paw pru wa lu na matu
3. Karai Mungdan shingni hpe htawng madun ai, ngang kang grin nna Mungkan mungdan kaba shagu the matut mahkai zinghkri y alu ai, Hpaji dat kasa wuhpawng nga wa lu na matu
4. Jiwoi Mungdan lamu ga hta atsam hpring ai, Kanbau hpaji jawng hpaw wa lu na matu
5. Jiwoi mungdan, hpaji jawng a matu, hpaji hkaja nga ai ni, Hpaji hkrum lam hta yakhkak jamjau hkrum nga ai ni hpe karum shingtau lu na matu



+358465947284

+66983455239



kingdommission.edu@gmail.com



Ilveskatu 2B 23,
Lahti, Finland



KINGDOM
EDUCATION MISSION

KINGDOM

Education Mission

24 June, 2024

Madung Galaw Sa wa na magam Bungli Ni

(1) Hpaji Dat Kasa magam bungli (Education Agency)

- Kanbau hpaji jawng ,dakkasu shawkshawn ya ai lam
- Shawkshawn mai ai, Dakasu, Jawng shiga ni hpe galoi mung aten dep shapoi ya nga na (online media, printing media, social media platform)

(2) Hpaji Machye machyang ginlen ai magam bungli ni galaw sa wa na (Knowledge Sharing)

- Hpaji la mai ai, tatut mahkrum madup ni hpe online media kaw na garan gachyan na (communication arts & Media production)
- Hpaji la mai ai laika buk ni hpe ga gale dip shapraw sa wa na
- Mungkan mungdan gatlawk hta popular byin ai laika ni hpe htinglet dut shabra ai lam galaw na
- Finland mungdan hta hkaja la mai ai hpaji masa ni, bungli masa ni hpe htawng madun tam sawk ndau shana ya nga na

(3) Karum ningtum magam bungli (Humanitarians support)

- KEM hpaji masing hte jawng lung nga ai jawngm ni kaw na kaja yakhkak jamjau nga ai ni hpe lamtam karum ya na
- Jiwoi mungdan a hpaji masing ni a matu, Jawng sara shalat karum ningtum magam bungli galaw na (B.Ed,M.Ed,D.Ed, PhD) (international programs)
- KEM hpaji masing hte jawnglung nga ai jawngma ni hpe, Gumhpaw Ginlen ai lam hta karum ya na



+358465947284

+66983455239



kingdommission.edu@gmail.com



Ilveskatu 2B 23,
Lahti, Finland



KINGDOM
EDUCATION MISSION

KINGDOM

Education Mission

24 June, 2024

(4) Mungkan Mungdan shara shagu de Hpaji zinghkri Gawgap ya na (Educational Network)

- Mungkan mungdan shara shagu de KME zinghkri hpaw saw a na
- Atsam hpring kanbau hpaji dakkasu ni the zinghkri ai lam galaw na
- Jawnglung let, kanbau hpaji sharin la lu mai ai, dakkasu ni law law the matut mahkai zinghkri gawgap saw a na
- Mungkan mungdan kaba shagu de, KME zinghkri hpaw saw a na (KEM-USA, Finland, Swaziland, Australia, ...)

(5) Jiwoi Mungdan hta ngang kang ai Kanbau hpaji jawng hpaw sa wa lu na matu (High Vocational schools)

- High vocational school hpaw sa na matu Mungkan mungdan shagu de mahkrun tam na
- High vocational school a matu masha shalat sa wa
- High vocational school a matu aten galu masing gran sa wa na
- High vocational school hpe paid internship program the ginrun hpaw sa wa lu na



+358465947284

+66983455239



kingdommission.edu@gmail.com



Ilveskatu 2B 23,
Lahti, Finland



KINGDOM
EDUCATION MISSION

KINGDOM

Education Mission

24 June, 2024

KINGDOM EDUCATION MISSION

VOCATIONAL EDUCATION, STUDENTS RECRUITMENT PROGRAM

**KEM: VERP Hte NSLVE Wuhpung Lahkawng Arau,
Ta Gidun Sa Wa Lu Na Matu Myit Hkrum Da Ai Lam Ni**

Myithkrum Masat Laika

- (1) KEM (Kingdom Education Mission : Vocational Education student recruitment program team) hte NSLVE (School of Leadership and vocational Education) gaw, Finland mungdan de, vocational jawng sa lung let bungli sa galaw jawngma ni hpe Hpaji a ningpawt Karai Kasang hpe ningpawt tawn ai, hpaji sasana myit jasat hte ta gindun sa wa na hpe myit hkrum da ga ai.
- (2) KEM a pandung yawshada lam ni hte NSLE a pandung yaw shada lam ni hpe shada hkungga manu shadan let, shada pawnba zinlum , madi shadaw karum shingtau sa wa na hpe myit hkrum da ga ai.
- (3) Lit la gunhpai na magma bungli ni hpe lawu na the maren garan lit hprai gun na matu myit hkrum da ga ai.

(A) KEM kaw na lit la hparan na lam ni

1. KEM+NSVE joint program a lam ndau shana na
2. KEM + NSLVE joint program a matu, jawngma hkapla ai lam lit la na.
3. NSLVE kaw atsawm sha lung let Finnish ga sharin hkam la nga ai ni hpe sha, Finland mungdan de kanbau hpaji jawng sa lung lu na matu, jawng shawkshawn ya ai lam galaw na.
4. Finnish ga sharin sara the shabrai the seng ai lam, sharin aten jahpan the, sanpoi ni the seng nna litla hparan na
5. English Ga Laika sharin sara shabarai litla hparan na
6. NSLVE kaw na, san da ya ai, KEM-NSLVE joint program lithkam the matut mahkai let magambungli htinglet ai lam galaw na. (Attendant, Payment install plan, application process data collections)
7. NSLVE kaw bang ra ai manu hte, Wifi internet , kaga ra mara a matu, KEM kaw na, jawngma langai mi a matu (ks= sen shi (1000,000) hku nna shalai ya na.



+358465947284

+66983455239



kingdommission.edu@gmail.com



Ilveskatu 2B 23,
Lahti, Finland



KINGDOM

Education Mission

24 June, 2024

(B) NSLE kaw na lit la karum na lam ni

1. NSVE+ KEM (Finland vocational study) joint program a lam ndau shana na
2. KEM kaw na, ap ya ai jawngma ni hpe hkap la ya na (No.1 lang jawngma (20) law htum)
3. NSVE curriculum the kapyawn nna, Finnish program, Duolingo test preparation (Upper intermediate level du hkra) sharin la lu na matu htuk manu hkra bang shalawm ya na.
4. Jawngma ni , online hku nna, hkaja ai lam galaw lu hkra, internet jak ni hpe htuk manu ai hku lajang ya na (self study a matu jai lang lu hkra)
5. KEM+NSVE joint program the Finland de sa wa na jawngma ni a hkyen lajang ra ai lam ni hpe, jawm jahkum shatsup y ana.(Gashadawn, passport laika buk nnan woi galaw zawn re lam ni...)
6. NSLVE kaw na, NSLVE +KEM joint program lithkam langai mi san da y anna, matut mahkai let magambungli htinglet ai lam galaw na. (Attendant, Payment install plan, application process data collections)
7. NSLVE kaw lung la sai, NSLVE +KEM joint program jawng ma ni hpe certificate jaw y ana.
8. KEM+NSLVE joint program the seng ai zuphpawng ni hta ,lahkawng mag ana lit nga ai ni , rau jawm jahkrup bawngban let rau ta gindun sa wa na.

Matsing:

1. Shata 6 course hpe hpringhkra lung ra ai raitim, Jawng application form awng wa ai hta hkan nna, jau sa ra mat ai rai jang ahkang jaw y ana matu.
2. Jawngma ni hpe shim lum ai the woi zinlum ya na matu
3. Online class a matu aten dep hkaja la lu hkra lajang ya na matu
4. KEM +NSLVE joint program hta jawngma ni tau hkrau chye na da ra ai lam ni hpe form shaga ai shaloi ka shalawm let, sanglang dan da na.
5. NSLVE joint program hta jawng lung nga ai , jawngma ni kaw na , masat da ai, hkan nang hkan sa ra ai lam ni kaw na, hpai shai wa ai rai yang, NSLVE jawng komiti ni kaw na dawdan lam matsun ai hpe jawngma wag aw hkam la ra na re.



+358465947284

kingdommission.edu@gmail.com

+66983455239

Ilveskatu 2B 23,
Lahti, Finland



KINGDOM
EDUCATION MISSION

KINGDOM

Education Mission

24 June, 2024

6. NSLVE a masat da ai jawng lung ladaw lapran kata sha NSLVE +KEM joint program jawngma ni hpe lit la ya na.
7. Aten ladaw hpe magam bungli ta gin dun hpang ai shani kaw nna, (1)ning mi hpring jang, magam bungli hpe bai jahkrup bawngban, dinglun mahtai tam n htawm myit hkrum lam hpe bai gawgap sa na matu, myit hkrum da ga ai.

Myithkrum Ta Masat Ka Da Ai Ni;

KEM representative persons

Sara Sumlut Ya Ku
Program manger
KEM: VERP , Thailand

Sara Nhkum Htoi Awng
Program coordinator
KEM: VERP ,Finland

NSLVE representative persons

Lahpai Zau Doi
Chairman, Board of Trustees

Rev. Dr. Dashi Tu Ring (Th.D.)
School Administrator
Secretary, Board of Trustees



+358465947284
+66983455239



kingdommission.edu@gmail.com



Ilveskatu 2B 23,
Lahti, Finland

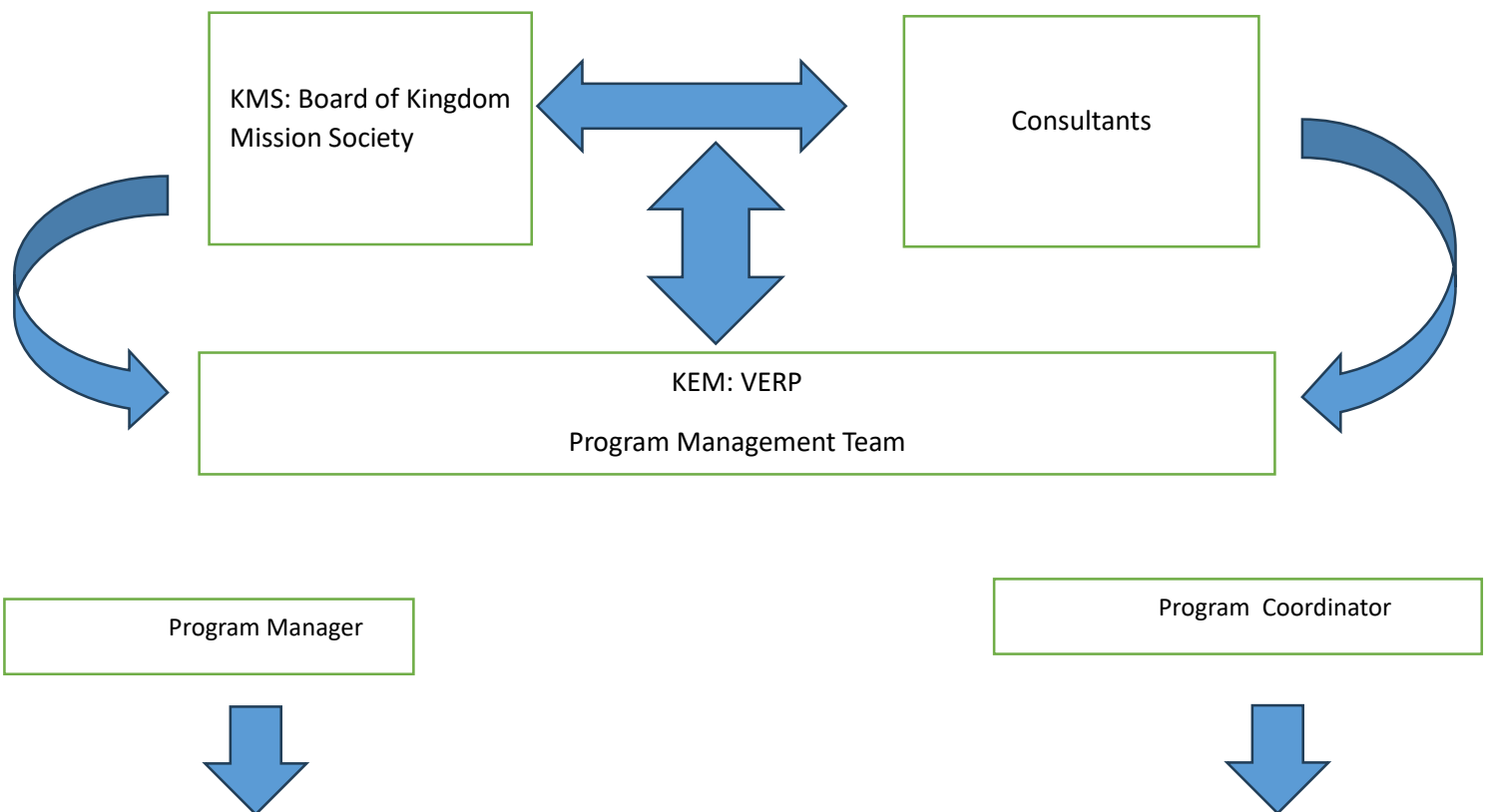


KINGDOM

Education Mission

24 June, 2024

ORGANIZATIONAL STRUCTURE OF KEM: VOCATIONAL EDUCATION, STUDENTS RECRUITMENTS PROGRAM, MANAGEMENT TEAM



+358465947284
+66983455239



kingdommission.edu@gmail.com



Ilveskatu 2B 23,
Lahti, Finland

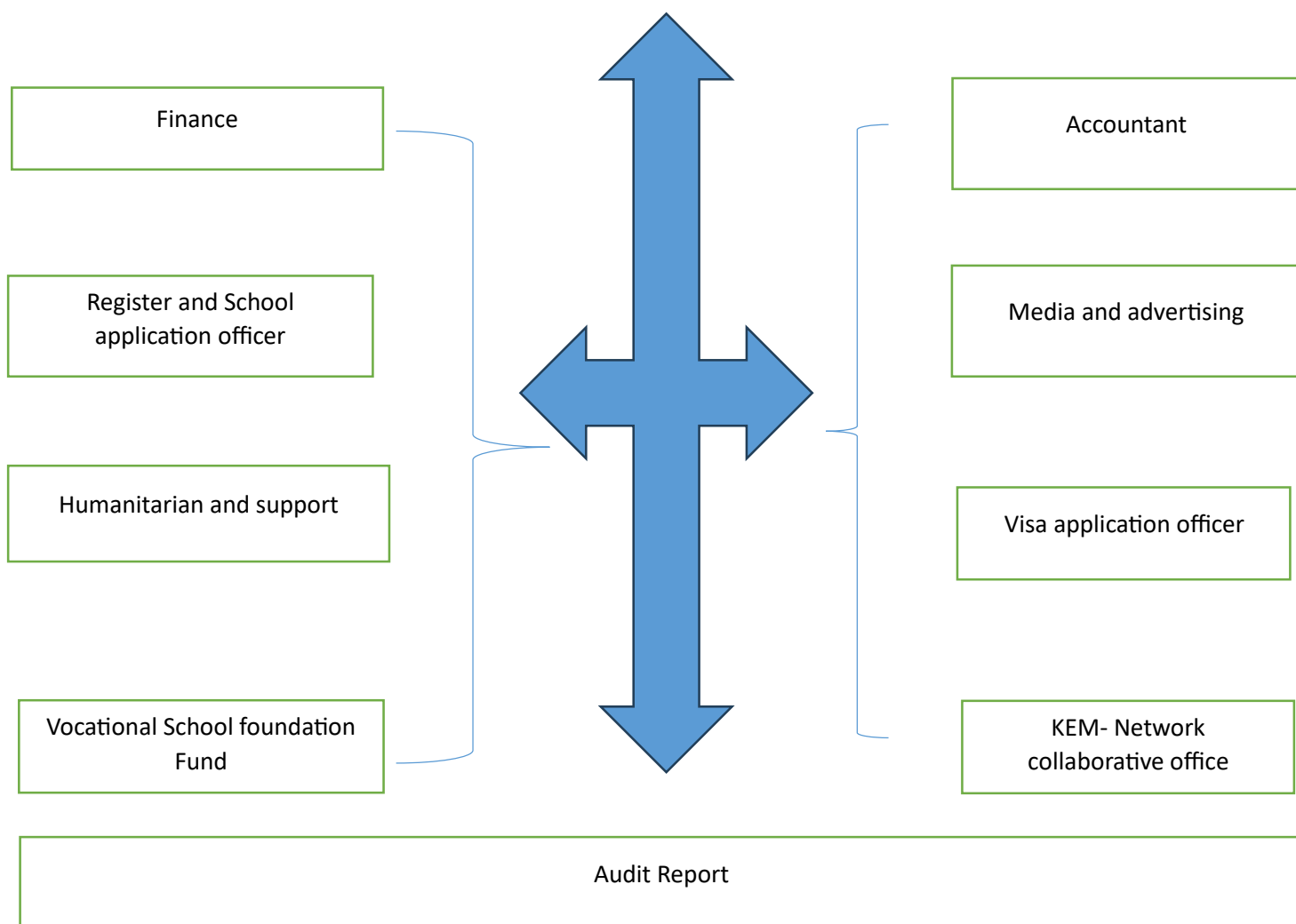


KINGDOM
EDUCATION MISSION

KINGDOM

Education Mission

24 June, 2024



+358 465947284
+66983455239



kingdommission.edu@gmail.com



Ilveskatu 2B 23,
Lahti, Finland