

DW 600/1500/4000/8000 WARRANTY FORM

Customer Information:

Name _____

Address _____

Phone # _____

Distributor Information:

Name _____

Phone _____

UNIT: _____ DW 600 _____ DW1500

 _____ DW4000 _____ DW 8000

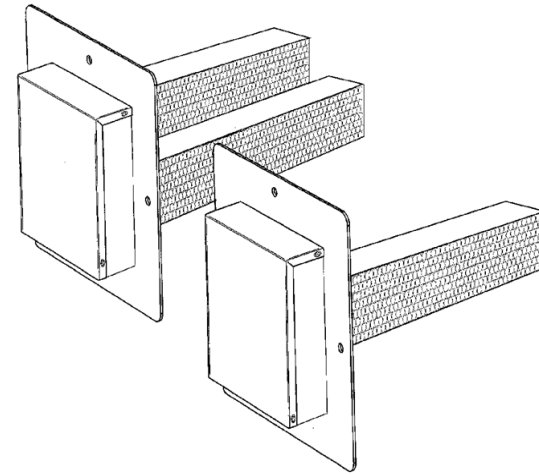
Serial Number _____

Date of Purchase _____

PLEASE COPY AND FILL OUT ALL INFO
RETURN IMMEDIATELY
MAIL, FAX OR EMAIL TO:

Hi-Tech Air Purification Systems
dba CIMR Technology
105 Magnolia Lane
Silsbee, TX 77656

Fax (866) 821-5569
customer.service@hitechllc.com



DW 600 DW 1500
DW 4000 DW 8000
Owner's Manual

Continuous Infectious Microbial Reduction

CIMR™ Infection Control Technology makes New Infection Control Strategies possible for medical facilities, businesses of all sizes, educational institutions, government, mass transportation, and the hospitality industry.

It has been demonstrated to be effective against every virus, bacteria, mold, and other fungus against which it has been applied to date, including the H5N8 virus, MRSA (Methycillin Resistant Staphylococcus Aureus), nonresistant Staphylococcus Aureus, E-Coli, Listeria Monocytogenes, Stachybotrus Chartarum (Black Mold), Streptococcus, Pseudomonas, and Bacillus Subtillus.

Congratulations

You have purchased one of the most effective, technologically advanced air purifiers available. Your new DW Unit with CIMR technology is designed to provide years of trouble-free, low maintenance operation. Be sure to read and follow all service procedures outlined in this owner's manual, and to use only genuine CIMR replacement parts available from your Distributor.

If you have any questions concerning this product, please contact your CIMR Distributor.

This owner's manual covers both the DW600, DW1500 & DW4000 single commercial probe units and the DW8000 dual commercial probe unit.

The procedures shown in this manual apply to both units, unless otherwise indicated.



To reduce the risk of electric shock, this equipment may have a grounding type plug that has a third (grounding) pin. This plug will only fit into a grounding type power outlet. If the plug does not fit into the outlet, contact qualified personnel to install the proper outlet. Do not alter the plug in any way.



Location for Protective Earth Line

Warning! – This unit must be installed by a licensed HVAC contractor or electrical contractor. Failure to do so will void warranty of the product.



Your CIMR Technology Representative :

Name: _____

Phone: _____

Warranty Information, cont.

Terms: Hi-Tech products with valid serial numbers are under warranty by Hi-Tech Systems, 105 Magnolia Lane, Silsbee, TX 77656, to the original purchaser only, to be free from defect in materials and workmanship for three (3) years from date of purchase, (excluding CIMR Cell which is under warranty for one (1) year from date of purchase.) If a valid serial number is missing from a product, the warranty will be voided. To confirm warranty coverage prior to purchasing a product, contact the Company at 866.231.3687 with the serial number located on the unit.

Hi-Tech products are authorized for sale through Independent Distributors only. Warranties are voided if a product is purchased through unauthorized channels. The Company will not extend warranty coverage on any product sold in a manner that violates our Internet Advertising Guidelines. This includes websites that are not authorized to use our trademarked names, images, and logos, as well as Internet auction sites. The only approved Internet presence for Hi-Tech products is the Company's corporate web address, www.cimrtech.com.

The Company's liability under this Warranty shall be limited to repair, or at our option, replacement without charge, except for transportation. All transportation charges on parts or units submitted under this Warranty shall be borne by purchaser. Unless this Warranty is expressly renewed or extended by the Company, any repaired or replaced part of the unit shall be under warranty to the original purchaser only, for the length of the unexpired portion of the original warranty.

The Company makes no warranties, express or implied, with respect to our Products, except such written warranty or warranties as may be set forth herein. SUCH WRITTEN WARRANTY IS EXCLUSIVE AND, TO THE EXTENT PERMITTED BY LAW, the COMPANY DISCLAIMS ALL OTHER WARRANTIES, INCLUDING BUT NOT LIMITED TO A WARRANTY OF MERCHANTABILITY OR FITNESS OF PURPOSE. NO CONSEQUENTIAL DAMAGES, INCIDENTAL DAMAGES OR OTHER INDIRECT OR SPECIAL DAMAGE OR LOSS OF GOODWILL, LOSS OF BUSINESS OPPORTUNITY, LOSS OR USE OF PLANT OR EQUIPMENT, OR LOSS OF EXECUTIVE AND EMPLOYEE TIME, WILL BE RECOVERABLE AND ARE SPECIFICALLY DISCLAIMED. THIS LIMITATION OF LIABILITY AND REMEDY REPLACES ANY AND ALL THEORIES OF ACTION, CAUSES OF ACTION, OR THEORIES OF DAMAGE WHICH MAY BE HAD OR BROUGHT, INCLUDING BUT NOT LIMITED TO ACTIONS BASED ON STATUTE, CONTRACT, BREACH OF WARRANTY, NEGLIGENCE, STRICT LIABILITY OR OTHER TORT THEORY. Some states do not allow the exclusion or limitation of incidental or consequential damages, so the above limitation or exclusion may not apply to you.

This Warranty gives you specific legal rights, and you may also have other rights, which vary from state to state. If your unit is defective, please contact Hi-Tech @ 105 Magnolia Lane, Silsbee, TX 77656, 866.231.3687 or www.cimrtech.com.

Please copy and then Mail, fax 866.821.5569, or email your Warranty Card Information to Hi-Tech within 10 days of purchase for activation of warranty. (See back page.)

FCC Statement and User Information

This equipment has been tested and found to comply with the limits for Industrial, Scientific, and Medical Equipment (ISM), pursuant to Part 18 of the FCC Rules. These limits are designed to provide reasonable protection against harmful interference when the equipment is operated in a commercial environment. This equipment generates, uses, and can radiate radio frequency energy, and if not installed and used in accordance with the instructions, may cause harmful interference to radio communications. Operation of this equipment in a residential area is likely to cause harmful interference in which case the user will be required to correct the interference at his own expense.

Warranty Information

This product is of solid state construction and is under warranty by:

Hi-Tech Air Purification Systems
www.cimrtech.com
Phone 866-231-3687

To the original purchaser, to be free from defect in materials and workmanship for a limited time.

Table of Contents

Unit Features/Principles of Operation	4
Specifications	5
Periodic Maintenance	6
Inspection of Unit	6
Installation Requirements	7
Electrical Requirements	7
Installing the Unit	8
Wiring the Unit	10
Replacing the Cells	10
Replacing the Ballast	12
FCC and Warranty Information	14
Warranty Form	16



DISPOSAL OF USED CELLS:

Please do not throw a used cell into the garbage. The special germicidal UVX bulb used in the cell contains a very small amount of mercury.

You may return your used cell to Hi-Tech for proper disposal. Send the used cell to:

Hi-Tech Air Purification Systems
105 Magnolia Lane
Silsbee, TX 77656

Unit Features:

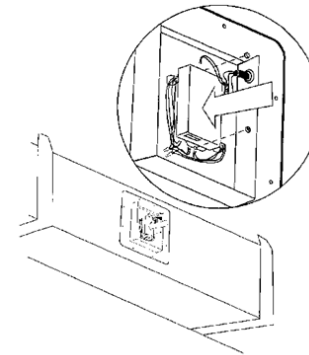
- Easy Installation
- No Chemicals
- Hard Wire Applications
- Low Maintenance

Principles of Operation:

The CIMR Cell is designed to reduce odors, air pollutants, and other contaminants through a patent pending CIMR process. When the unit is in operation, the CIMR Cell uses an Advanced Oxidation Process to reduce airborne contaminants. The CIMR Cell produces low levels of Hydrogen Peroxide that improves the air as it travels through the HVAC system.

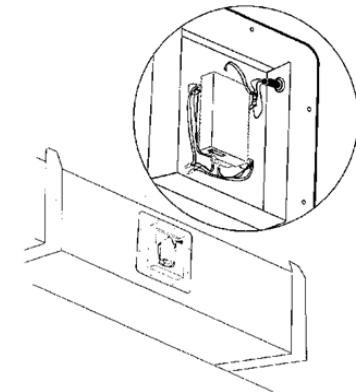


CAUTION: Do not look directly at the glowing lamp. Prolonged exposure, even to reflected UV light, can cause eye damage according to the American Conference of Governmental Industrial Hygienist (ACGIH) Standards. CIMR 2000 emits UV light which can cause eye damage if the light were looked at continuously, for 20 minutes or more, at a distance of one (1) INCHES OR LESS.

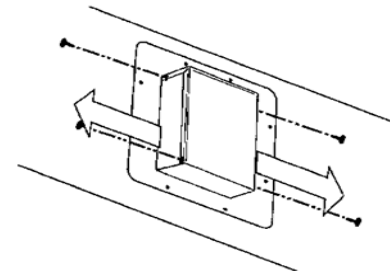


5. Place new ballast into original location and fasten the two (2) locking nuts into place.

6. Return wiring to its original locations on the ballast.



7. Replace cover and secure with the original four (4) screws.



8. Reconnect power and check for proper operation (UV indicators should be lit when in operation).

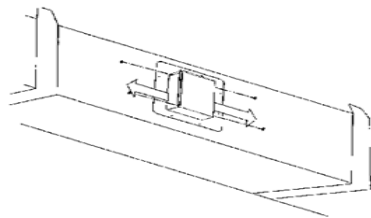
Replacing the Ballast

Replacement of the ballast may be necessary, if, after replacing the CIMR cell, the lamp still does not become active.



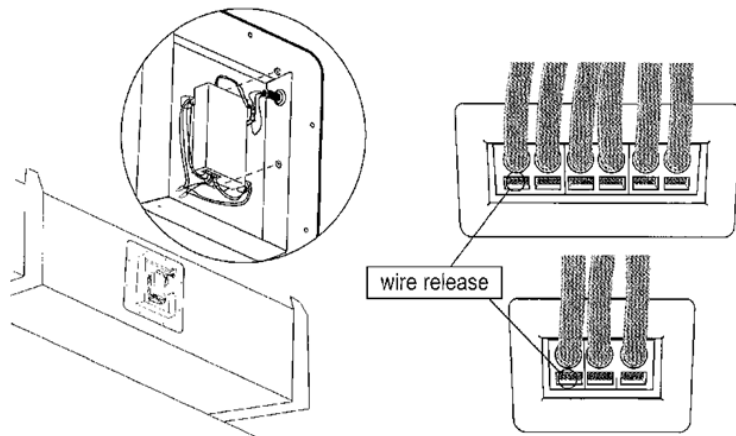
1. Disconnect power at the breaker or fuse panel before servicing unit.

2. Open the ballast housing by removing the four (4) screws then removing cover.



3. Remove the two (2) nuts on the top and bottom side of the ballast to pull ballast from assembly.

4. Remove the wires (DW8000 – 8 wires, DW4000 – 6 wires) from ballast by pressing a small screwdriver into the wire release.



Specifications:

Electrical:

120 – 240V ~ 50/60Hz
20 watts power consumption (CIMR DW4000)
37 watts power consumption (CIMR DW8000)

Size:

DW4000
Height: 9"; Width: 9"; Depth: 17" (23cm x 23cm x 43.2cm)
Weight: 4 pounds (W: 1.8kg)
DW8000
Height: 11"; Width: 11"; Depth: 17" (28cm x 28cm x 43.2cm)
Weight: 8 pounds (W: 3.6kg)

Recommended Coverage:

DW600 single 6" probe unit: 750 sq. ft. (229 sq. m)
DW1500, single 9" probe unit: 2,000 sq. ft. (186sq. m)
DW4000, single 14" probe unit: 5,000 ft² (465m²)
DW8000, dual 14" probe units: 10,000ft² (929m²)

Warranty:

See warranty card for specific details.

Features:

UV Indicator(s).
Replaceable CIMR Cell (s)
Replaceable CIMR Ballast

Periodic Maintenance

The only periodic maintenance required for the DW units is replacement of the CIMR cell as indicated by the small indicator lamp located on the ballast cover .

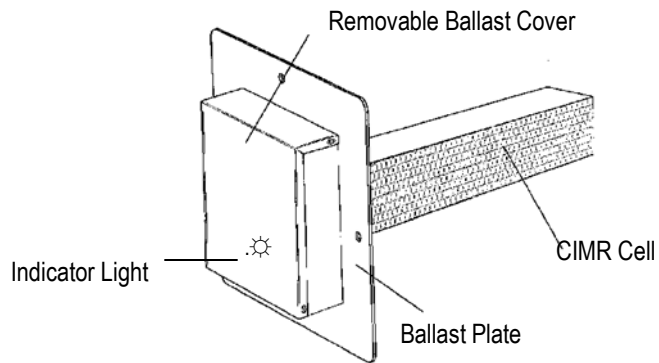


Caution! – Never attempt to check operation of the CIMR cell (s) by direct observation. Severe eye damage can result. Use the indicator lamps on the bottom of the ballast only.

Replace the CIMR cell when the CIMR cell UV lamp no longer functions, or every two (2) years, whichever comes first.

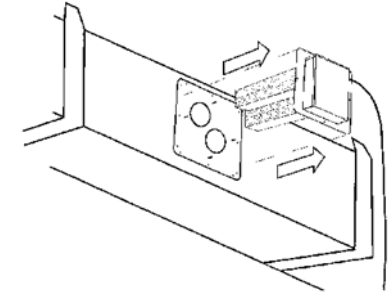
Inspection of Unit

1. Remove unit from shipping carton.
2. Remove all protective materials.
3. Check for shipping damage and loose or broken parts.
4. Read this Owner’s Manual thoroughly prior to installation.
5. Determine location for placement of the unit.

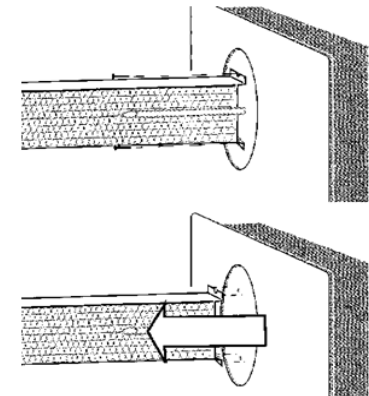


DW600, DW1500 & DW4000

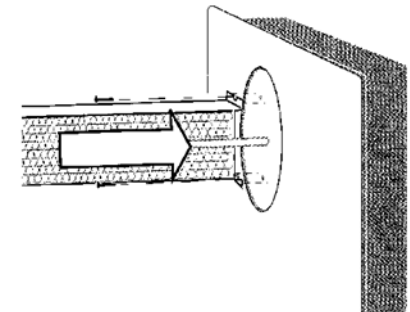
2. Remove the ballast assembly by removing the four (4) wiring nuts and sliding the unit out.



3. Remove the two bolts on either side of the cell to remove the cell from the ballast assembly.



4. Replace cell by reversing steps 1 – 3.



Wiring the Unit



Warning! – Hard wiring unit into HVAC system should be done by a licensed HVAC installer or qualified electrical contractor only.

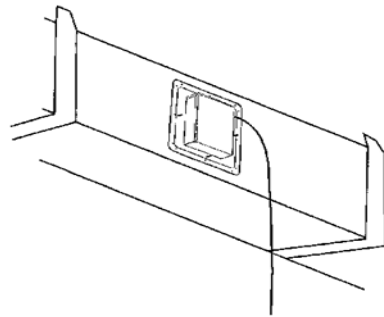
NOTE: Disconnect power at the breaker or fuse panel before servicing unit.

1. Connect wires coming from the DW unit to the fan relay as follows: NOTE: All units come standard with a blunt cord.

For 120 volt unit: Black = L1, White = Neutral, Green = Ground

For 220 volt unit: Black = L1, White = L2, Green = Ground

2. Connect the unit to the load side of the proper fan relay



3. Be sure to ground the ballast by securing the unit to the metal surface of the AC unit or power box.

4. Check indicator light for proper operation.

Replacing the Cell

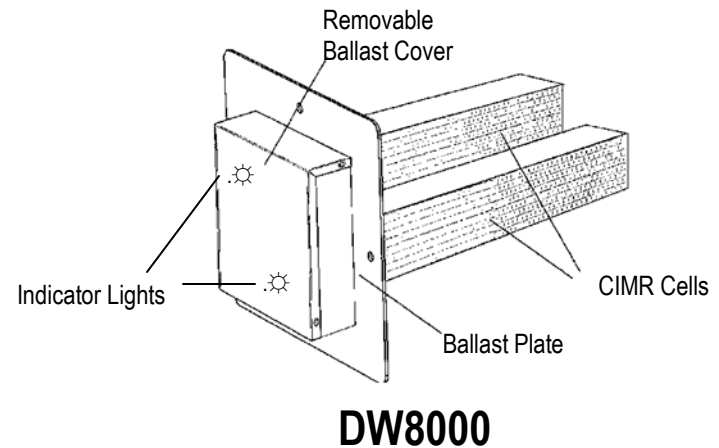


Caution! – Never attempt to check operation of the CIMR Cell by direct observation. Severe eye damage can result. Use the indicator lamps on the bottom of the unit housing only.

Replace the CIMR cell when the UV lamp no longer functions, or every two (2) years, whichever comes first.



1. Disconnect power at the breaker or fuse panel before servicing unit.



Installation Requirements

- Unit should be installed after the air handler (supply side) in the HVAC system.
- The duct work around the installation area should be clean and dry to ensure proper connection.
- Depending on model, one opening (DW600, 1500 and 4000) or two openings (DW8000) approximately 3.5 - 4 inches in diameter will need to be cut into the existing duct work to install properly.

Caution! – When the unit is installed in a roof mounted HVAC system, the unit must be protected from the elements.

Warning! – If installed near a furnace or where emergency heat coils could raise the temperature inside the plenum, cycle the AC unit through three full heating cycles assuring that the temperature never exceeds 200°F (93°C). The CIMR cell must not exceed 200°F (93°C).

Electrical Requirements

For 120 volt unit: Black = L1, White = Neutral, Green = Ground

For 220 volt unit: Black = L1, White = L2, Green = Ground

International Units: Brown = L1, Blue = Neutral, Green with Yellow Stripe = Ground

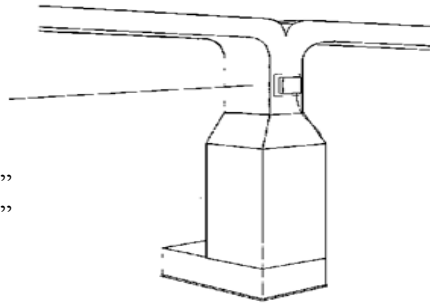
Unit is shipped with a blunt cord. If required, installation of a UL approved plug should be done by a qualified electrical contractor.



Wiring of the unit into your HVAC system should be done by a licensed HVAC installer or electrical contractor only.

Installation Clearances

DW600	Min. 8" x 8"
DW1500	Min. 8" x 8"
DW4000	Min. 10" x 10"
DW8000	Min. 12" x 12"

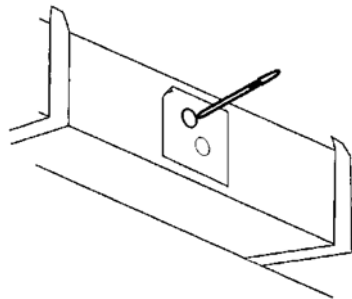


Installing the Unit

1. Find the optimal position downstream from the air handler. Ensure location in duct has enough room for the mounting plate. It is recommended for maximum effectiveness that the unit be placed as close to the air handler as possible.

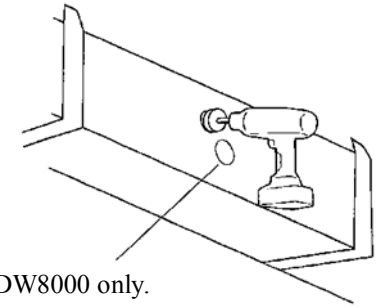
Please Note:

The illustrations are shown installing a DW8000. The procedures shown in this manual apply to both units, unless indicated.

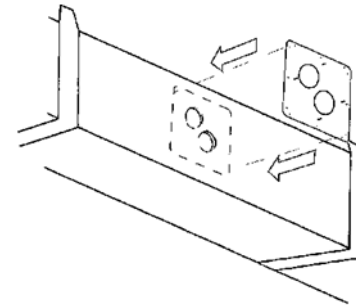


2. Using the appropriate template included, mark location for installation. (DW8000 is shown)

3. Using a 4" (4 inch) hole saw, cut opening (s) into duct work.

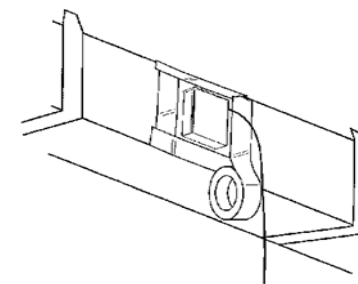
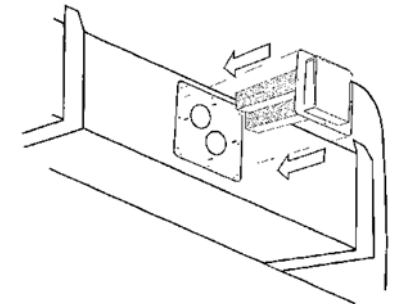


Cut the second hole for DW8000 only.



4. Place the mounting plate squarely into place and fasten to duct work with metal screws.

5. Move ballast assembly to location and secure to duct work with the four (4) wing nuts provided.



6. Unit may be taped with aluminum HVAC tape to provide complete seal.