

Lynx Mfg.

Assembly Instructions



1. Install main & backer clamp assembly on bar
 - a. Use four $\frac{3}{4}$ " x 2 $\frac{1}{4}$ " grd. 8 bolts with **small** $\frac{3}{4}$ " washer on head of bolt, & flanged lock nuts

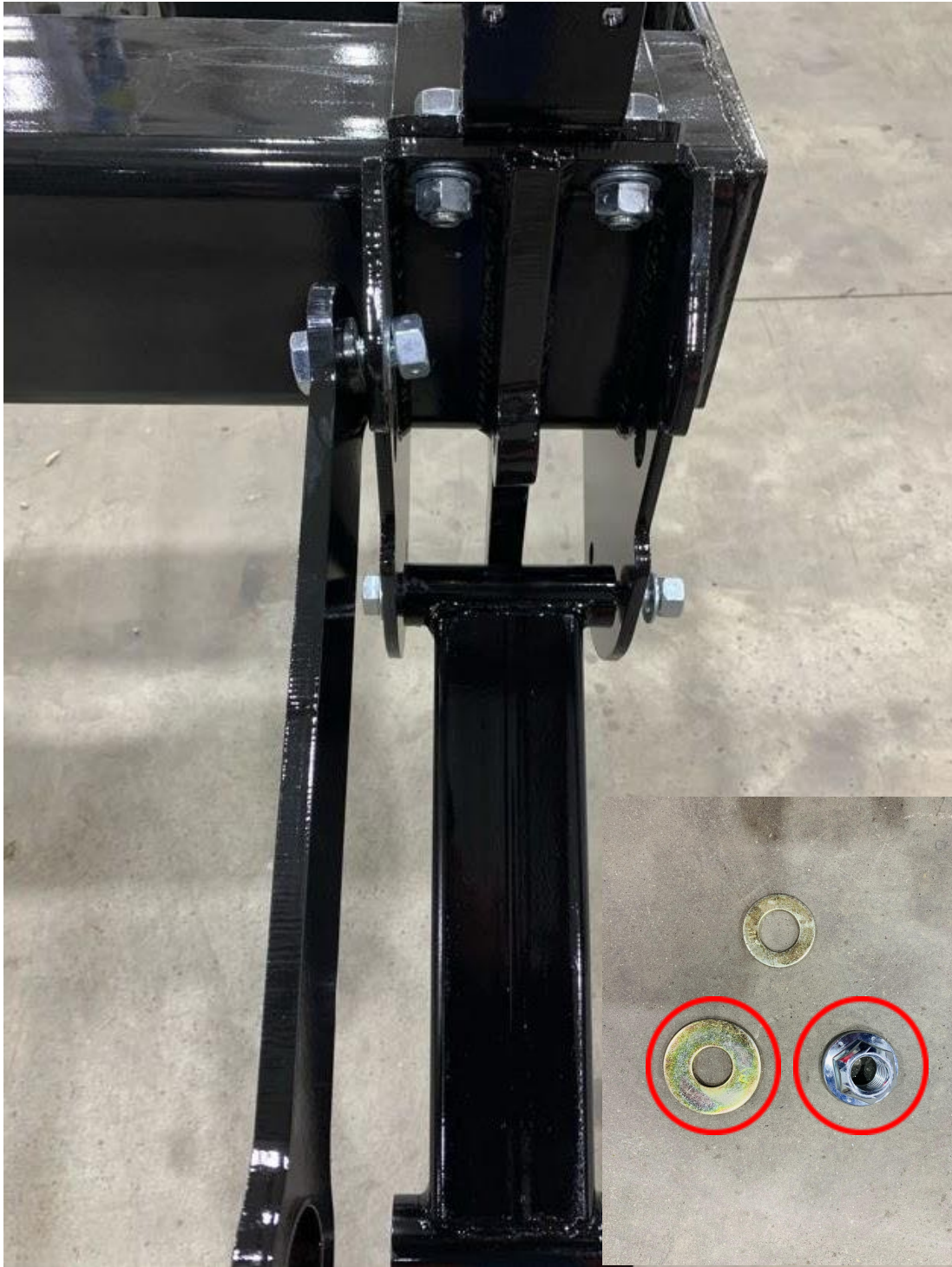
Note: All hardware should have Red Loctite applied to it before being tightened.



2. Install wide parallel using ($\frac{3}{4}$ " x 8" drilled grd. 8 bolt with **small** $\frac{3}{4}$ " washer, and flanged lock nut)

Note: All drilled and tapped 8" bolts face to the same side of the row unit.

Note: Facing every other row towards each other will help with ease of greasing.



3. Install **ONE** carcass arm ($\frac{3}{4}$ " x 2 $\frac{1}{4}$ "grd. 8 bolt with **LARGE** $\frac{3}{4}$ " washer, hardened bushing, and flanged lock nut)



4. Install 2"x4" cylinder (make sure fittings face towards center of bar)

Note: Make sure rod end of cylinder is attached to carcass



5. Install carcass onto wide parallel using lowest hole in the front of carcass
(Use $\frac{3}{4}$ " x 8" drilled grd. 8 bolt with **small** $\frac{3}{4}$ " washer on head, and flanged lock nut)



6. Install second carcass arm using ($\frac{3}{4}$ " x 2 $\frac{1}{4}$ " grd. 8 bolts, **LARGE** $\frac{3}{4}$ " washer, hardened bushing, and flanged lock nut)



7. Install a wide parallel on the farthest forward hole on the bottom side of the main clamp.
(using $\frac{3}{4}$ " x 8" drilled grd. 8 bolt with **small** $\frac{3}{4}$ " washer, and flanged lock nut)





8. Install bottom cleaner parallel with short side of lug facing the ground.
(using $\frac{3}{4}$ " x 8" drilled grd. 8 bolt with **small** $\frac{3}{4}$ " washer, and flanged lock nut)

Note: Make sure rod end of cylinder is attached to parallel



9. Install cleaner cylinder (with fittings facing towards the outside of machine)

Cleaner and Unit cylinder fittings should be facing towards opposing sides of the machine.

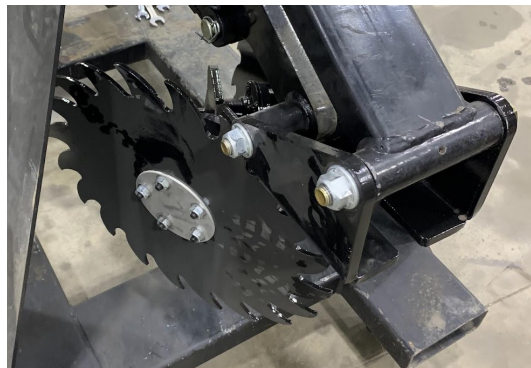


10. Install cleaner assembly onto front parallels (using $\frac{3}{4}$ " x 8" drilled grd. 8 bolt with **small** $\frac{3}{4}$ " washer on head, and flanged lock nut)





11. Install bearings onto cleaner assembly (using $\frac{3}{4}$ " x $1\frac{1}{2}$ " grd. 8 bolts, **LARGE** $\frac{3}{4}$ " washer, and **Red Loctite**)
12. Install $\frac{1}{2}$ " spacer, sharktooth coulters (following direction of coulters in picture), SS cap, M12 stamped lock nuts, and **Red Loctite**.





13. Install shank/coulter unit (using $\frac{3}{4}$ " x 8" drilled grd. 8 bolt with **small** $\frac{3}{4}$ " washer on head, and flanged lock nut)

Note: All hardware should have Red Loctite applied to it before being tightened.



14. Install sealer arms on side of carcass (using $\frac{3}{4}$ " x 2 $\frac{1}{2}$ " grd. 8 bolts, **Small** $\frac{3}{4}$ " washers on head of bolt, and flanged lock nut) *Coulter will be installed in step 17.*
Note: Top setting for sealer arms is roughly 8" deep, bottom setting is roughly 4" deep.



15. Install 3"x 4" shank cylinder onto shank before installing basket assembly.

Note: Hoses face same as cleaner cylinders

Note: Make sure rod end of cylinder is attached to shank.



Note: All hardware should have Red Loctite applied to it before being tightened.

16. Install bearings onto sealer coulters (using $\frac{3}{4}$ " x 1 $\frac{1}{2}$ " grd. 8 bolts, **LARGE** $\frac{3}{4}$ " washer, and **Red Loctite**)
17. Install $\frac{1}{2}$ " spacer 20" sealer coulter **making sure to follow the direction of coulter in picture,** and then SS* cap (using M12 stamped lock nuts, and **Red Loctite**)

****Stainless Steel***



18. Install tail onto rear most hole of carcass (using $\frac{3}{4}$ " x 8" drilled grd. 8 bolt, **Small** $\frac{3}{4}$ " washer, and flanged lock nut)

Note: All hardware should have Red Loctite applied to it before being tightened.



19. Install basket arms (using $\frac{3}{4}$ " x 8" grd. 5 none drilled bolts, **Small** $\frac{3}{4}$ " washer, and flanged lock nuts)



20. Install bearings onto basket arms (using $\frac{3}{4}$ " x $1\frac{1}{2}$ " grd. 8 bolts, **LARGE** $\frac{3}{4}$ " washer, and **Red Loctite**)

21. Install basket **without** $\frac{1}{2}$ " spacer, SS cap, M12 stamped lock nuts, and **Red Loctite**.

Note: JIC 6 T that is on union in middle should face towards same side of unit as cleaner and shank fittings.

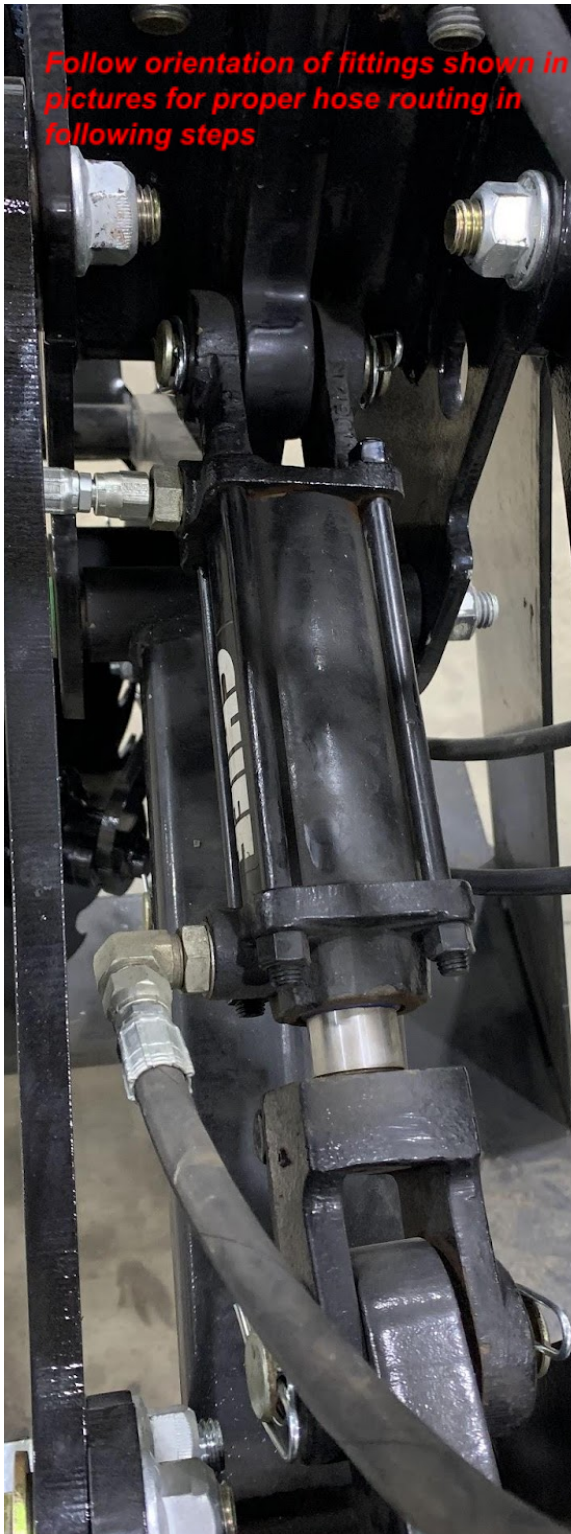


22. Install row unit block onto clamp (using 5/16" x 2 1/2" SS bolts, washers on both side, and lock nut)

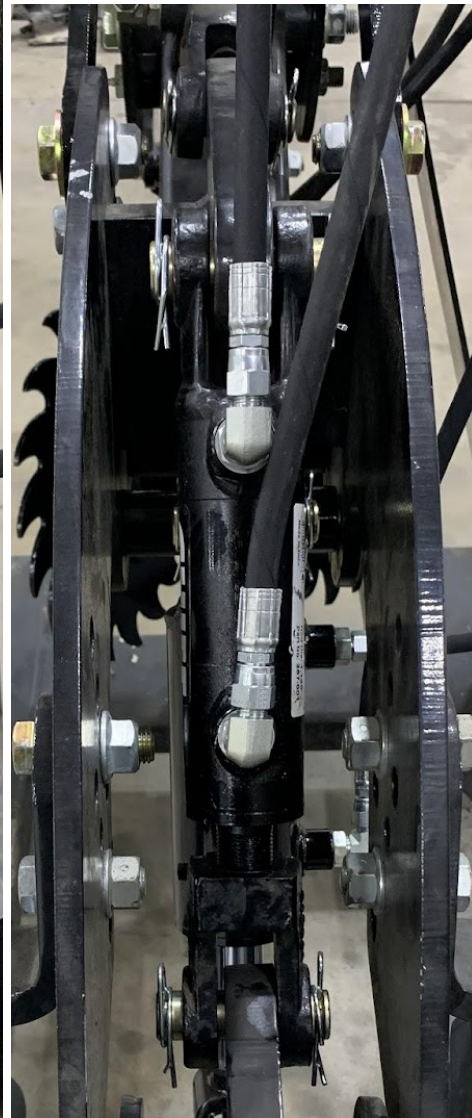
Note: Use Anti Seize on bolt before tightening to prevent cross threading.

23. Install all fittings into cylinders

Unit Cylinder



Basket Cylinder



Cleaner Cylinder



Shank Cylinder



Follow orientation of fittings shown in pictures for proper hose routing in following steps



Green: Unit down pressure

Yellow: Basket down pressure

Red: Cleaner down pressure

Orange: Shank down pressure

Blue: Unit lift

Purple: Basket lift

Gray: Shank lift

Pink: Cleaner lift

Note: Make sure to hold fitting as you tighten hoses, so as to not loosen fittings causing leaks.

24. Route and tighten hoses.

Note: Installing & tightening one hose at a time is the best option to prevent leaks.

