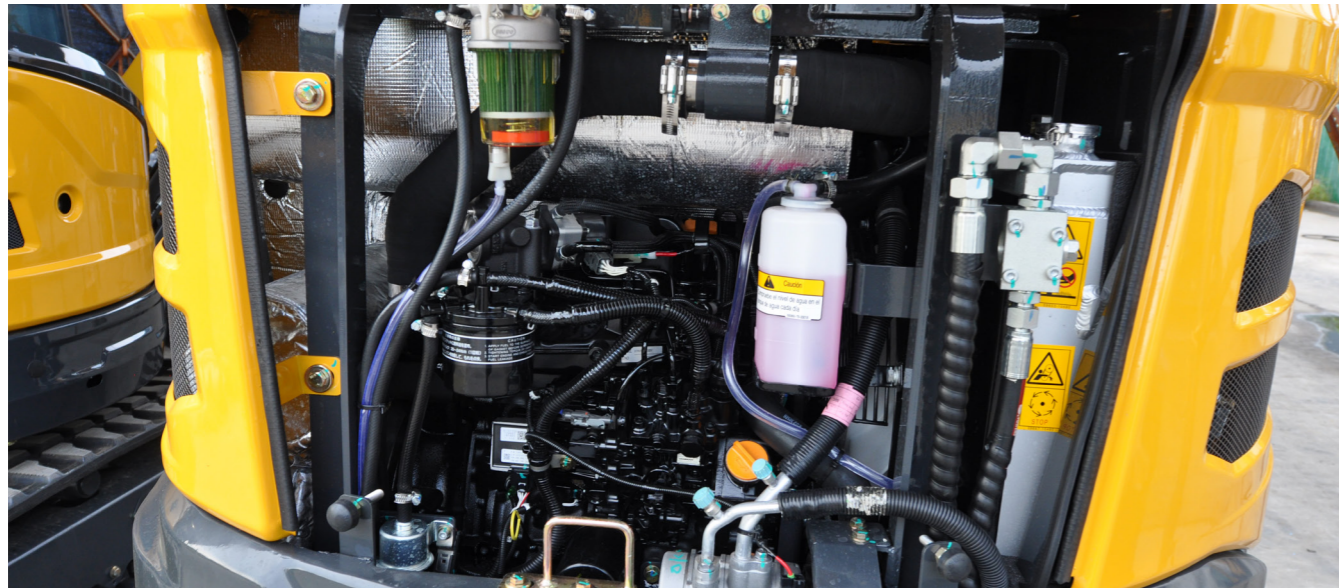


SE17 Rover 1.8 T Excavator

EASY ACCESS FOR MAINTENANCE

EASY SERVICE ACCESS

Easy access to service the engine is a must when purchasing machinery. With a single access point for daily maintenance of all components - Oil, fuel and air filters, engine coolant and the battery - looking after your machine could not be easier.



LIFTING CAPACITY FORM

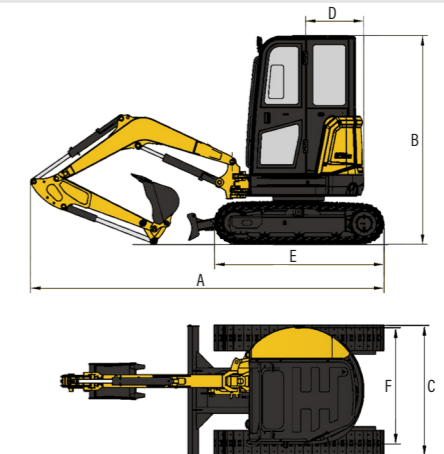
ISO 10567

LIFT CAPACITY Bmm	Amm	RATED LIFT CAPACITY OVER BLADE, BLADE DOWN -kg			RATED LIFT CAPACITY OVER BLADE, BLADE UP -kg			RATED LIFT CAPACITY OVER SIDE, BLADE UP -kg		
		2000	3000	At Max. Radius@(mm)	2000	3000	At Max. Radius@(mm)	2000	3000	At Max. Radius@(mm)
2500	-	-	-	323*@(2577)	-	-	323*@(2577)	-	-	312@(2577)
2000	-	-	-	338*@(2965)	-	-	205@(2965)	-	-	198@(2965)
1000	554*	422*		366*@(3316)	338	155	131@(3316)	333	147	124@(3316)
0	641*	404*		356*@(3261)	305	145	115@(3261)	300	137	109@(3261)
-1000	438*			304*@(2767)	279		144@(2767)	272		138@(2767)

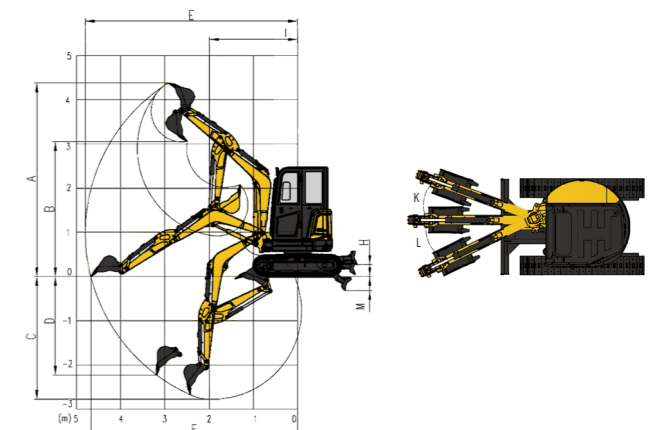
SPECIFICATIONS

ENGINE	
Model	KUBOTA D902
Type	Vertical, water cool, 4-cycle
No. of cylinder	3
Emission	EPA Tier 4 Final/Europe Stage V
Displacement	0.898L
Power output	11.8kW/2300rpm
HYDRAULIC SYSTEM	
Type	Axial piston-variable displacement
Max. hydraulic flow	64L/min
DIGGING FORCE (ISO6015)	
Bucket digging force	16kN
Arm digging force	9.5kN
BUCKET	
Type	Backhoe bucket
Bucket capacity	0.04 m ³
Bucket width	450 mm
DRIVE SYSTEM	
Type	Axial piston motor
Track roller	2×3
Track shoes	2×37
Travel speed	2.2/4.3km/h
Max. Drawbar pull	18kN
Grade ability	58%
SWING SYSTEM	
Swing motor type	Cycloidal motor
Swing speed	0-9.5r/min
REFILLING CAPACITIES & LUBRICATIONS	
Fuel tank	19L
Cooling system	5L
Engine oil	3.7L
Hydraulic oil tank	20L
OPERATING WEIGHT AND GROUND PRESSURE	
Shoe width	230mm
Ground pressure	29kPa
Operating weight	1780/1880kg

DIMENSIONS (BOOM: 1828 mm ARM: 950 mm)		mm
A	Transport Length (arm lowered)	3570
B	Overall height(top of canopy)	2400
C	Undercarriage Width (Retracted)	990
D	Undercarriage Width (Extended)	1300
E	Undercarriage Length	1593
F	Upperbody width (zero tail)	990



WORKING RANGE		mm
A	Max. digging height	3535
B	Max. dumping height	2445
C	Max. digging depth	2270
D	Max. vertical digging depth	1910
E	Max. digging radius	3910
F	Max. digging radius, at ground level	3845
G	Min. swing radius of work equipment	1495
H	Min. tail swing radius	650
I	Ground clearance of counterweight	450
J	Maximum Dozer Lift Height	280
K	Maximum Dozer Dig Depth	190
L	Maximum Boom Offset (LH)	385
M	Maximum Boom Offset (RH)	510
N	Boom Swing Angle (LH&RH)	57°/61°



* The specifications are subject to change without notice. The pictures may include options. The actual color & appearance of the product may differ from what is shown.