



TOYOTA

2024 Tacoma

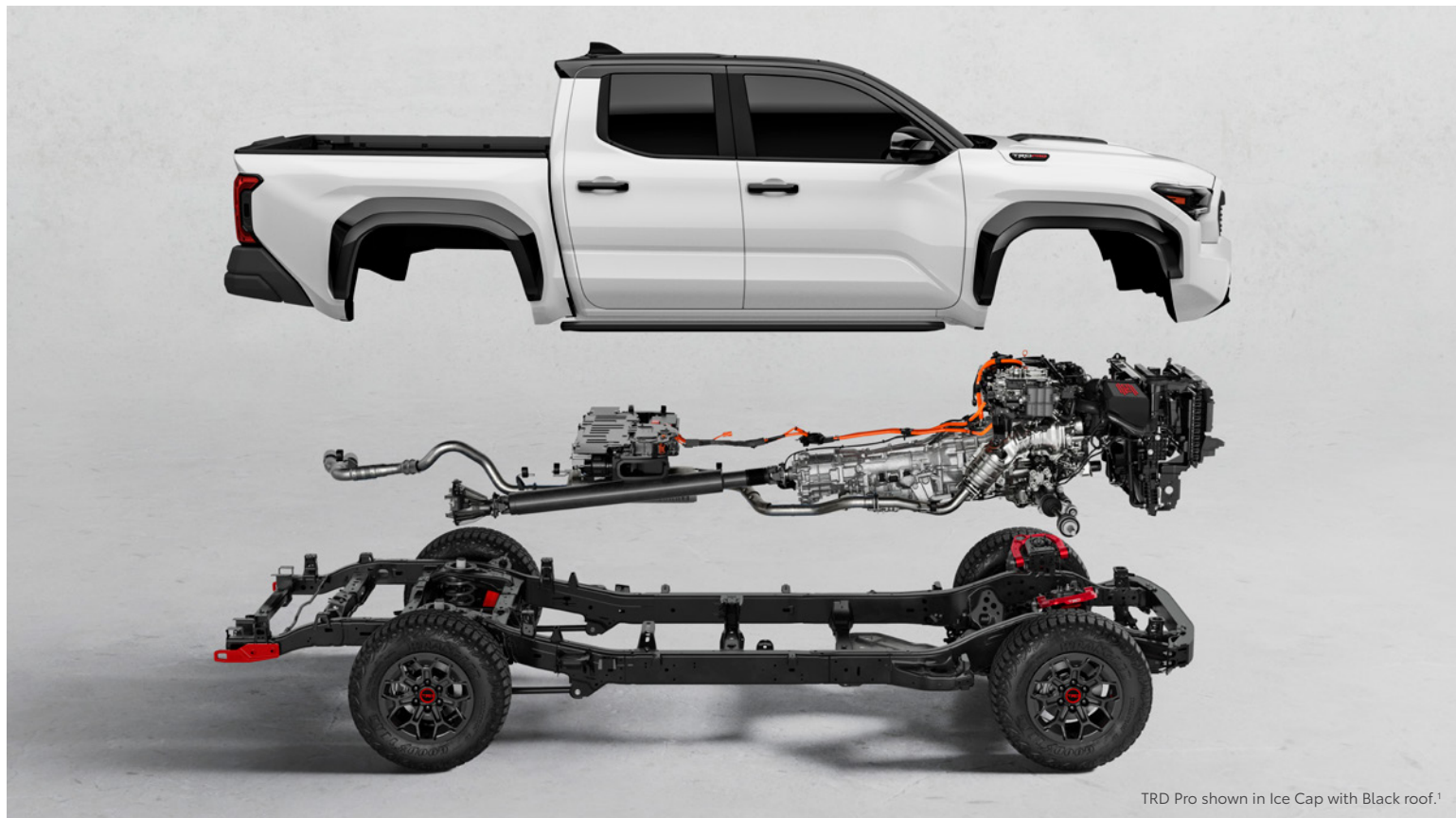
2024 TACOMA

More power for more play.

The culmination of decades of off-roading heritage, the 2024 Toyota Tacoma is purpose-built to take on epic adventures and reach new destinations. With genuine off-road performance features, a redesigned exterior and more power than ever before, Tacoma is ready to make your trail-conquering dreams come true.



See numbered footnotes in Disclosures section.



TRD Pro shown in Ice Cap with Black roof.¹

CHASSIS

Engineered from the ground up.

Reimagined from the ground up while building on its legendary heritage, Tacoma is made for every adventure. With its streamlined body sitting on a frame built to tackle almost anything, all that's left to imagine is where you'll take yours.

Redesigned body

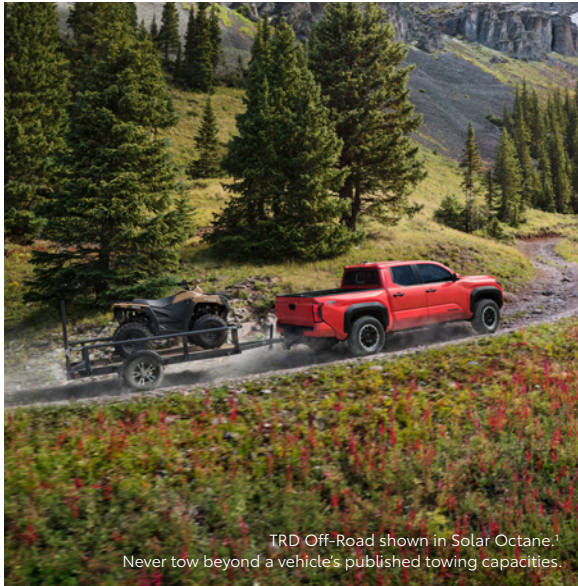
The unmistakable Tacoma silhouette has been refined to its essence, highlighting its rugged DNA and unmatched off-road heritage. A streamlined body with high front bumper clearance and a wide, athletic stance defines its classic look.

TNGA-F chassis

Adopting the same advanced and robust chassis of the full-size Tundra and Sequoia, Tacoma's Toyota New Global Architecture-F (TNGA-F) platform combines high-strength steel with lightweight aluminum and laser welds throughout the chassis. The result? Enhanced rigidity, less weight, and the truck of your dreams.

Power up, over and through.

Tacoma's available i-FORCE and i-FORCE MAX hybrid powertrains both deliver prodigious power and torque — with the i-FORCE MAX producing up to 326 hp and 465 lb.-ft. of torque.



TRD Off-Road shown in Solar Octane.¹
Never tow beyond a vehicle's published towing capacities.

i-FORCE gas engine

Meet every challenge, every day. With up to 278 horsepower and up to 317 lb.-ft. of ultra-responsive torque, Tacoma's i-FORCE 2.4-liter turbocharged engine is ready to deliver day in, day out. And when adventure calls, enjoy the confidence of knowing your Tacoma is built to get you there and back.



TRD Pro shown in Ice Cap with Black roof.¹ Off-roading is inherently dangerous. Abusive use may result in personal injury or vehicle damage.

i-FORCE MAX hybrid powertrain

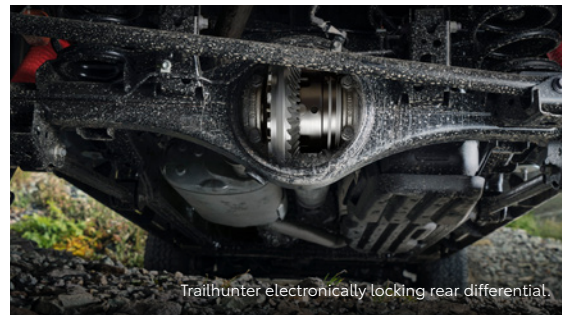
The available i-FORCE MAX hybrid powertrain introduces an unprecedented level of torque to your world. The 2.4-liter turbocharged engine, combined with a 48-hp electric motor, delivers a commanding 326 horsepower and an astounding 465 lb.-ft. of low-end torque.



TRD Sport interior shown in Boulder/Black fabric with available 6-speed intelligent Manual Transmission (iMT).

Available 6-speed Manual

Who says manual transmissions are going extinct? You asked and we answered, with an available 6-speed intelligent Manual Transmission (iMT) with automatic rev matching, clutch-start cancel and anti-stall technology, to make those challenging rock-crawling sections a little less challenging.



Stabilizer Disconnect Mechanism (SDM)

Unleash Tacoma's full off-road capability and get farther down the trail with the available Stabilizer Disconnect Mechanism (SDM). With the push of a button, you can increase suspension articulation across the whole truck, to dominate the off-road like never before.

CAPABILITY

Asphalt is overrated.

When you think about it, paved roads are just detours between trails. That's why we outfitted Tacoma with standard performance features that let you make the most of rugged trails, massive dunes and everywhere in between. Paved or otherwise.²

ARB® steel rear bumper with recovery hooks

Co-developed with ARB®, Tacoma's available high-clearance steel rear bumper provides additional protection for when the going gets tough. Plus, with integrated recovery hooks mounted to the frame, you'll have peace of mind that you won't be stranded when the going gets too tough.

Electronically locking rear differential

When you're traversing uneven terrain, Tacoma's available electronically controlled locking rear differential provides increased grip in low-traction conditions. By distributing engine power evenly, it allows the rear wheels to move at the same speed, pushing you up, over and through the obstacle.

INTERIOR

As comfortable as it is capable.

Nature can be unforgiving. The inside of Tacoma is anything but. Conquer the unknown from a premium interior loaded with everything you need to keep the fun going for the long haul.



Trailhunter interior shown in Mineral. Screen depiction accurate at time of posting. Concentrating on the road should always be your first priority while driving.

14-in. touchscreen

Everything is right at your fingertips with Tacoma's available 14-in. multimedia touchscreen display. This vivid display runs on Toyota's latest audio multimedia system, which supports satellite navigation,³ SiriusXM^{®4} and wireless Apple CarPlay^{®5} and Android Auto^{™6} compatibility.

Power moonroof

Take a moment after the dust clears to gaze out of Tacoma's available power moonroof and relish the great outdoors. Some view, isn't it?



TECHNOLOGY

Legendary toughness. Cutting-edge tech.

These are more than just your old “bells and whistles.” Tacoma offers available tech that helps keep you connected and in control, even as you venture off the grid.



3D Multi-Terrain View Monitor

When you need an extra pair of eyes, Tacoma's available next-generation Multi-Terrain Monitor (MTM) lets you check your immediate surroundings for potential obstacles. Easily toggle between front-, rear- and side-camera views on the available 14-in. multimedia touchscreen.



10-speaker JBL® Premium Audio with removable speaker

Keep the good vibes going from the trail to the campsite and beyond with the available 10-speaker JBL® Premium Audio system. The integrated JBL® FLEX portable speaker is waterproof and dust-proof, so it can be carted just about anywhere.



Power open-and-close tailgate

Tacoma's available segment-first power open-and-close tailgate⁹ with jam protection makes loading and unloading your gear a breeze. If your hands are full, just press a button on the key fob or push the taillight switch on either side of the vehicle to open and close it, or simply let the knee-lift assist close the tailgate for you.



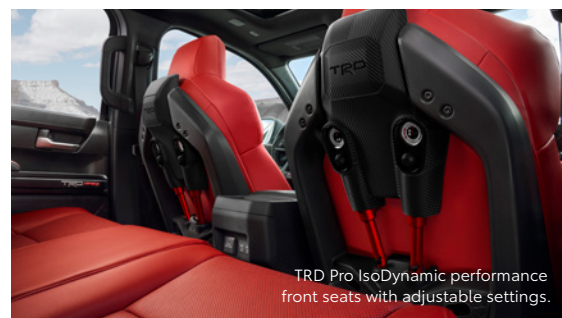
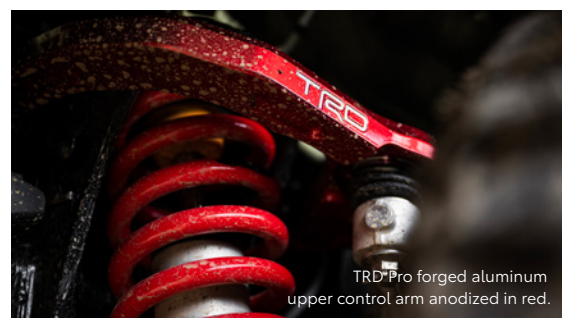
12.3-in. digital gauge cluster

Quickly see all the information you need with Tacoma's available 12.3-in. digital gauge cluster with selectable gauges. This customizable full-color display lets you select which information you want shown, like safety features, navigation, audio controls, off-road features, towing functions and more, allowing you to keep focused on the road ahead.

TRD PRO

The Real Deal.

When it comes to off-road heritage, there's only one name you need to know: Toyota Racing Development (TRD). Now Tacoma TRD Pro is back to capture the hearts and stir the souls of a new generation of off-road enthusiasts. Loaded with dirt-destroying features in a rugged and stylish package, Tacoma TRD Pro doesn't just raise the bar for off-road performance; it is the bar.



Born in Baja. Famous everywhere.

What started nearly 40 years ago on a desolate stretch of Mexican desert has become an unstoppable force in off-roading and the truck of choice for those who demand more. The latest Tacoma TRD Pro is purpose-built to carry on that unmatched legacy — and to take you as far as you want to go.

TRD-tuned FOX® suspension

Experience off-road racing-inspired performance and glide over whoops with TRD-tuned FOX®¹⁰ QS3 Internal Bypass shocks with 2.5-in. aluminum housings and rear remote reservoirs. These cutting-edge shocks ensure fade-free high-speed performance, and with Quick-Shift 3 (QS3) technology, you can adjust the level of damping to match whatever terrain you're tackling.

IsoDynamic Performance front seats

Designed to keep you stable over unstable terrain, TRD Pro's segment-first IsoDynamic Performance front seats use an air-over-oil shock absorber system to dampen body movement and stabilize your field of vision — helping provide a smooth, confidence-inspiring ride. So go ahead and let it rip.

See numbered footnotes in Disclosures section.



Trailhunter shown in Bronze Oxide with available ARB® roof rack.⁵⁰ Off-roading is inherently dangerous. Abusive use may result in personal injury or vehicle damage.



Trailhunter shown in Bronze Oxide with standard steel underbody protection.



Trailhunter shown in Bronze Oxide with standard 33-in. Goodyear®¹¹ Territory® R/T tires.



The ultimate overlanding machine.

Toyota has long been the choice of those who forge their own paths to adventure. Now, the choice is even clearer. Introducing the Tacoma Trailhunter—conceived, designed and built to be a ready-made overlanding beast.

33-in. rugged-terrain tires and 18-in. wheels

As the old saying goes, “Go big or go home.” So, of course, Trailhunter goes big, with 33-in. Goodyear®¹¹ Territory® R/T tires wrapped around 18-in. bronze-finished wheels. These rugged-terrain tires boost ground clearance while delivering superior off-road traction. Where you’re going, you’ll need it.

Old Man Emu® suspension

Overlanders need a truck that can do more than just take them down the toughest trails; they also need it to carry all their gear and supplies for extended time off the grid. Trailhunter’s standard Old Man Emu® 2.5-in. forged monotube shocks with external remote reservoirs combine rugged capability with outstanding load-carrying stability, to get you through the obstacles and into the middle of nowhere.



Onboard air compressor

Whether you’re spending days or even weeks on the trail, Trailhunter’s bed-mounted air compressor makes airing back up the tires a breeze when the time comes to get back on the road.

XTRACAB

Because sometimes you just need Xtra.

Designed for those who need to carry more cargo than passengers, XtraCab's lockable rear panel allows you to conveniently stow your gear. Combined with innovative floor storage, reinforced MOLLE panel side pockets and a fold-flat passenger seat, XtraCab is small in size, but big in functionality.

TRD PreRunner

Tacoma TRD PreRunner is back for 2024. Available exclusively in XtraCab with Rear-Wheel Drive, it features a lifted front suspension, 32-in. BFGoodrich® all-terrain tires, 17-in. TRD wheels, and an electronically locking rear differential.



Lockable rear cargo area

Wherever you wind up, keep valuables and gear secure with the lockable rear storage panel. It utilizes a pegboard design to allow you to organize things exactly how you want.

Seatback workstation

When the job needs to get done no matter what (or where), the passenger seat can be folded down to be used as a workspace, complete with a place to put your water bottle.

See numbered footnotes in Disclosures section.

Technology that keeps up with you.

Take advantage of smarter and convenient technologies designed to simplify your everyday life. Trial periods available on select models for the listed Connected Services.¹³ 4G network dependent.



Safety Connect®

Round-the-clock help when the unexpected happens.¹⁴

- ✓ Emergency Assistance Button (SOS)
- ✓ Enhanced Roadside Assistance¹⁵
- ✓ Automatic Collision Notification
- ✓ Stolen Vehicle Locator¹⁶



Service Connect

Being proactive to keep your vehicle in peak condition.¹⁷

- ✓ Vehicle Health Report
- ✓ Vehicle Maintenance Alert
- ✓ Maintenance Reminder



Wi-Fi Connect

Turn your Toyota into a hotspot with 4G connectivity.¹⁸

- ✓ AT&T Hotspot



Drive Connect

Enhanced features to get you where you need to be.¹⁹

- ✓ Destination Assist²⁰
- ✓ Intelligent Assistant²¹
- ✓ Cloud Navigation²²



Remote Connect²³ with Digital Key²⁴ Capability

Manage your vehicle, including remote start and much more.

- ✓ Remote Vehicle Start
- ✓ Unlock/Lock
- ✓ Remote Notifications Guest Driver
- ✓ Smartwatch Compatibility

To view included trial details, please visit toyota.com/connected-services.

Ready to go at every stop.

You never know what challenges the off-road will throw at you.

That's why Tacoma offers a wealth of features and accessories designed to make the going a little easier — so you can always stay on track.



Composite bed

Available in either 5-ft. or 6-ft. configurations, Tacoma's aluminum-reinforced bed is composed of an ultra-durable Sheet-Molded Composite (SMC) surface that is not only strong and resilient, but also lightweight.⁵⁸



2400-watt power supply

A class-leading 2400W onboard AC inverter²⁵ is standard on all hybrid Tacomas and sends power to both the bed and inside the cabin. So you can keep your gear running and the good times rolling wherever you are.⁵⁸



Digital rearview mirror

Connected to a camera in the rear, Tacoma's available digital rearview mirror casts a clearer, wider and obstruction-free view of what's behind you. You can zoom in, zoom out and adjust the mirror to give you a better perspective. Integrated HomeLink^{®37} universal transceiver buttons provide easy access to your garage door and more.



Rear-seat storage

i-FORCE-powered Double Cab Tacomas feature rear seats that flip and fold to reveal additional storage compartments underneath and behind the seatback.



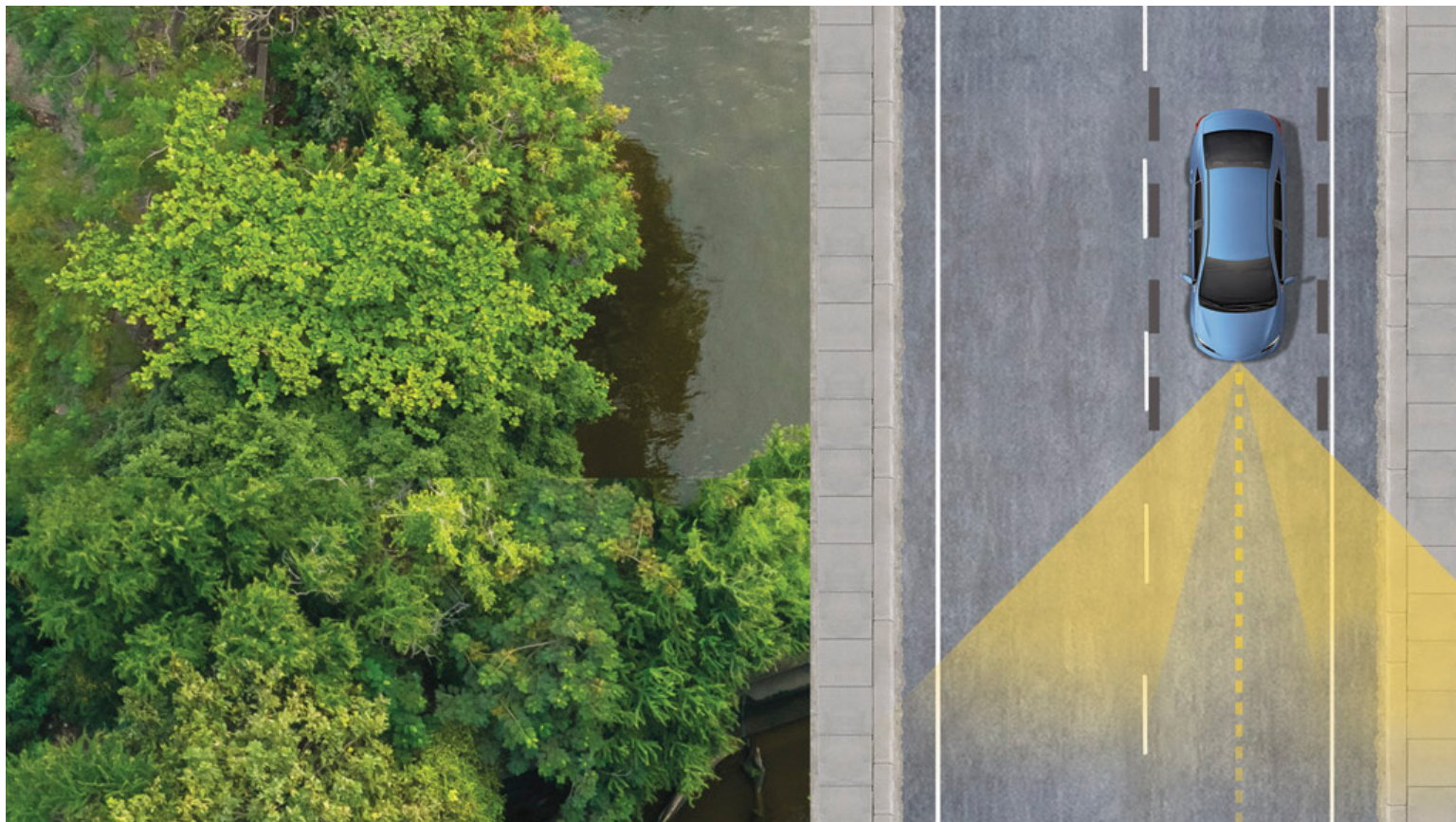
Blind Spot Monitor

Tacoma's available Blind Spot Monitor (BSM)²⁶ is designed to warn you when a vehicle in the next lane enters your blind spot on either side of the vehicle. When the system detects a trailer is being towed, the BSM extends the area of detection and alert in consideration of the trailer.



Prewired auxiliary switches

Tacoma's prewired auxiliary toggle switches are integrated into the dashboard and provide the perfect platform to install Genuine Toyota Accessories, or accessories from Toyota's industry-leading accessory providers.



TOYOTA SAFETY SENSE™ 3.0 (TSS 3.0)

Peace of mind comes standard.

Toyota Safety Sense™ (TSS)²⁷ is a suite of safety and driver-assistance technologies designed to support driver awareness, decision-making and vehicle operation. These features are available on many new Toyota vehicles at no additional cost.



Pre-Collision System with Pedestrian Detection²⁸



Dynamic Radar Cruise Control⁵⁹



Lane Departure Alert with Steering Assist³⁰



Automatic High Beams³¹



Lane Tracing Assist³²



Road Sign Assist³³



Proactive Driving Assist³⁴
(AT models only)

See numbered footnotes in Disclosures section.



BEYOND ZERO

Beyond Zero is Toyota's vision to reach carbon neutrality with our products, services and operations, and go beyond, as we find new ways to create a better world. We currently offer more low and zero emission vehicles combined than any other automaker, to give customers numerous choices to reduce their carbon footprint.

Hybrid EV

Hybrid Electric Vehicles start, refuel and handle like the gas-only Toyotas you already know and love — just with better mpg.

Plug-in Hybrid EV

Plug-in Hybrid Electric Vehicles run just like hybrids, using a combination of fuel and battery-powered electric motor(s), but thanks to their larger battery pack, they can run farther on electric power alone.

Battery EV

These pure Electric Vehicles replace gasoline and combustion engines with battery-powered electric motors, providing smooth and almost instantaneous torque.

Fuel Cell EV

Fuel Cell Electric Vehicles combine stored hydrogen with oxygen from the outside air to generate their own electric charge to power the motor.



TACOMA MODELS



SR

Available in XtraCab 6-ft. bed
or Double Cab 5-ft. bed

Mechanical/Performance

- ✓ i-FORCE 2.4L turbocharged engine; 228 hp @ 6000 rpm; 243 lb.-ft. @ 1700 rpm; 8-speed Automatic Transmission
- ✓ i-FORCE 2.4L turbocharged engine; 270 hp @ 5400 rpm; 310 lb.-ft. @ 1700 rpm; 6-speed Manual Transmission
- ✓ Rear-Wheel Drive (RWD) or 4WDemand part-time 4WD

Exterior Features

- ✓ Twin-tube shocks
- ✓ Leaf spring rear suspension
- ✓ 17-in. wheels
- ✓ LED headlights and taillights
- ✓ Class-IV towing hitch with 7-pin/4-pin connector³⁵ (standard on Double Cab; available on XtraCab)

Interior Features

- ✓ Fabric-trimmed seats
- ✓ 7-in. digital meter
- ✓ Smart Key System (driver door only)

Audio Multimedia

- ✓ 8-in. audio multimedia touchscreen display
- ✓ 4-speaker audio with wireless Apple CarPlay^{®5} and Android Auto^{™6} compatibility; SiriusXM^{®4} 3-month trial subscription (XtraCab)
- ✓ 6-speaker audio with wireless Apple CarPlay^{®5} and Android Auto^{™6} compatibility; SiriusXM^{®4} 3-month trial subscription (Double Cab)

Safety Features

- ✓ Toyota Safety Sense[™] 3.0 (TSS 3.0)²⁷ includes:
 - Pre-Collision System with Pedestrian Detection (PCS w/PD)²⁸
 - Proactive Driving Assist (PDA)³⁴ (AT models only)
 - Lane Departure Alert with Steering Assist (LDA w/SA)³⁰
 - Automatic High Beams (AHB)³¹
 - Road Sign Assist (RSA)³³
 - Full-Speed Range Dynamic Radar Cruise Control (DRCC)²⁹ on AT models and Dynamic Radar Cruise Control (DRCC)⁵⁹ on MT models

Packages/Options

- ✓ SR Upgrade Package (MT)
- ✓ SR Upgrade Package (AT)
- ✓ Tow Package
- ✓ Mudguards



SR5

Available in XtraCab 6-ft. bed
or Double Cab 5-ft. bed or 6-ft. bed

Mechanical/Performance

- ✓ i-FORCE 2.4L turbocharged engine; 278 hp @ 6000 rpm; 317 lb.-ft. @ 1700 rpm; 8-speed Automatic Transmission
- ✓ Rear-Wheel Drive (RWD) or 4WDemand part-time 4WD

Exterior Features

- ✓ Multi-link rear suspension (Double Cab)
- ✓ Leaf spring rear suspension (XtraCab)
- ✓ 17-in. alloy wheels
- ✓ LED headlights and taillights
- ✓ LED fog lights
- ✓ Class-IV towing hitch with 7-pin/4-pin connector³⁵
- ✓ Deck rail with adjustable cleats

Interior Features

- ✓ Smart Key System (driver and front passenger doors only)
- ✓ 60/40 split, folding rear seat (Double Cab)
- ✓ Fold-flat passenger seat (XtraCab)
- ✓ Lockable rear storage panel (XtraCab)
- ✓ Auto-dimming rearview mirror
- ✓ Fabric-trimmed seats

Audio Multimedia

- ✓ 8-in. audio multimedia touchscreen display
- ✓ 4-speaker audio with wireless Apple CarPlay^{®5} and Android Auto^{™6} compatibility; SiriusXM^{®4} 3-month trial subscription (XtraCab)
- ✓ 6-speaker audio with wireless Apple CarPlay^{®5} and Android Auto^{™6} compatibility; SiriusXM^{®4} 3-month trial subscription (Double Cab)

Safety Features

- ✓ Toyota Safety Sense[™] 3.0 (TSS 3.0)²⁷ includes:
 - Pre-Collision System with Pedestrian Detection (PCS w/PD)²⁸
 - Proactive Driving Assist (PDA)³⁴
 - Lane Departure Alert with Steering Assist (LDA w/SA)³⁰
 - Automatic High Beams (AHB)³¹
 - Road Sign Assist (RSA)³³
 - Full-Speed Range Dynamic Radar Cruise Control (DRCC)²⁹

Packages/Options

- ✓ SR5 Upgrade Package
- ✓ SR5 Upgrade Package Plus Cold Weather Package
- ✓ Mudguards
- ✓ Heated front seats



TRD PreRunner

Available in XtraCab 6-ft. bed

Mechanical/Performance

- ✓ i-FORCE 2.4L turbocharged engine; 278 hp @ 6000 rpm; 317 lb.-ft. @ 1700 rpm; 8-speed Automatic Transmission
- ✓ Rear-Wheel Drive (RWD)

Exterior Features

- ✓ 17-in. alloy wheels with all-terrain tires
- ✓ Electronically controlled locking rear differential
- ✓ Front suspension lift
- ✓ Leaf spring rear suspension
- ✓ TRD PreRunner bedside decals

Interior Features

- ✓ Fabric-trimmed seats
- ✓ Fold-flat passenger seat
- ✓ Lockable rear storage panel with integrated pegboard
- ✓ Deep storage compartment

Audio Multimedia

- ✓ 8-in. audio multimedia touchscreen display
- ✓ 4-speaker audio with wireless Apple CarPlay^{®5} and Android Auto^{™6} compatibility; SiriusXM^{®4} 3-month trial subscription

Safety Features

- ✓ Toyota Safety Sense[™] 3.0 (TSS 3.0)²⁷ includes:
 - Pre-Collision System with Pedestrian Detection (PCS w/PD)²⁸
 - Proactive Driving Assist (PDA)³⁴
 - Lane Departure Alert with Steering Assist (LDA w/SA)³⁰
 - Automatic High Beams (AHB)³¹
 - Road Sign Assist (RSA)³³
 - Full-Speed Range Dynamic Radar Cruise Control (DRCC)²⁹

Packages/Options

- ✓ TRD PreRunner Upgrade Package

TACOMA MODELS



TRD Sport

Available in Double Cab 5-ft. bed
or 6-ft. bed

Mechanical/Performance

- ✓ i-FORCE 2.4L turbocharged engine; 278 hp @ 6000 rpm; 317 lb.-ft. @ 1700 rpm; 8-speed Automatic Transmission
- ✓ i-FORCE 2.4L turbocharged engine; 270 hp @ 5400 rpm; 310 lb.-ft. @ 1700 rpm; 6-speed Manual Transmission
- ✓ i-FORCE MAX 2.4L turbocharged hybrid powertrain; 326 hp @ 6000 rpm; 465 lb.-ft. @ 1700 rpm; 8-speed Automatic Transmission
- ✓ Rear-Wheel Drive (RWD) or 4WDemand part-time 4WD

Exterior Features

- ✓ 18-in. machined alloy wheels
- ✓ LED fog lights
- ✓ LED bed lighting
- ✓ Hood scoop
- ✓ TRD Sport bedside decals
- ✓ Black badging

Interior Features

- ✓ Leather-trimmed manual tilt/telescopic steering wheel
- ✓ Smart Key System on driver and front passenger doors
- ✓ TRD-branded Push Button Start
- ✓ 60/40 split, folding rear seat with under-seat storage
- ✓ Fabric-trimmed seats
- ✓ Automatic climate control with air filtration
- ✓ Aluminum pedals

Audio Multimedia

- ✓ 8-in. audio multimedia touchscreen display
- ✓ 6-speaker audio with wireless Apple CarPlay^{®5} and Android Auto^{™6} compatibility; SiriusXM^{®4} 3-month trial subscription

Safety Features

- ✓ Toyota Safety Sense[™] 3.0 (TSS 3.0)²⁷ includes:
 - Pre-Collision System with Pedestrian Detection (PCS w/PD)²⁸
 - Proactive Driving Assist (PDA)³⁴ (AT models only)
 - Lane Departure Alert with Steering Assist (LDA w/SA)³⁰
 - Automatic High Beams (AHB)³¹
 - Road Sign Assist (RSA)³³
 - Full-Speed Range Dynamic Radar Cruise Control (DRCC)²⁹ on AT models and Dynamic Radar Cruise Control (DRCC)³⁹ on MT models

Packages/Options

- ✓ TRD Sport Upgrade Package
- ✓ TRD Sport Premium Package
- ✓ Heated front seats
- ✓ 14-in. audio multimedia touchscreen display
- ✓ Power tilt/slide moonroof
- ✓ Mudguards



TRD Off-Road

Available in Double Cab 5-ft. bed
or 6-ft. bed

Mechanical/Performance

- ✓ i-FORCE 2.4L turbocharged engine; 278 hp @ 6000 rpm; 317 lb.-ft. @ 1700 rpm; 8-speed Automatic Transmission
- ✓ i-FORCE 2.4L turbocharged engine; 270 hp @ 5400 rpm; 310 lb.-ft. @ 1700 rpm; 6-speed Manual Transmission
- ✓ i-FORCE MAX 2.4L turbocharged hybrid powertrain; 326 hp @ 6000 rpm; 465 lb.-ft. @ 1700 rpm; 8-speed Automatic Transmission
- ✓ 4WDemand part-time 4WD + electronically locking rear differential

Exterior Features

- ✓ 17-in. machined alloy wheels (i-FORCE)
- ✓ 18-in. machined alloy wheels (i-FORCE MAX)
- ✓ LED fog lights
- ✓ LED bed lighting
- ✓ Electronically controlled locking rear differential
- ✓ Bilstein^{®41} monotube remote reservoir shocks
- ✓ Composite front skid plate
- ✓ Black overfenders

Interior Features

- ✓ Leather-trimmed manual tilt/telescopic steering wheel
- ✓ Smart Key System on driver and front passenger doors
- ✓ TRD-branded Push Button Start
- ✓ 60/40 split, folding rear seat with under-seat storage
- ✓ Fabric-trimmed seats
- ✓ Automatic climate control with air filtration

Audio Multimedia

- ✓ 8-in. audio multimedia touchscreen display
- ✓ 6-speaker audio with wireless Apple CarPlay^{®5} and Android Auto^{™6} compatibility; SiriusXM^{®4} 3-month trial subscription

Safety Features

- ✓ Toyota Safety Sense[™] 3.0 (TSS 3.0)²⁷ includes:
 - Pre-Collision System with Pedestrian Detection (PCS w/PD)²⁸
 - Proactive Driving Assist (PDA)³⁴ (AT models only)
 - Lane Departure Alert with Steering Assist (LDA w/SA)³⁰
 - Automatic High Beams (AHB)³¹
 - Road Sign Assist (RSA)³³
 - Full-Speed Range Dynamic Radar Cruise Control (DRCC)²⁹ on AT models and Dynamic Radar Cruise Control (DRCC)³⁹ on MT models

Packages/Options

- ✓ TRD Off-Road Upgrade Package
- ✓ TRD Off-Road Premium Package
- ✓ Heated front seats
- ✓ 14-in. audio multimedia touchscreen display
- ✓ Stabilizer Disconnect Mechanism (SDM)
- ✓ Power tilt/slide moonroof
- ✓ Mudguards



Limited

Available in Double Cab 5-ft. bed

Mechanical/Performance

- ✓ i-FORCE 2.4L turbocharged engine; 278 hp @ 6000 rpm; 317 lb.-ft. @ 1700 rpm; 8-speed Automatic Transmission
- ✓ i-FORCE MAX 2.4L turbocharged hybrid powertrain; 326 hp @ 6000 rpm; 465 lb.-ft. @ 1700 rpm; 8-speed Automatic Transmission
- ✓ 4WDemand part-time 4WD or All-Wheel Drive (AWD)

Exterior Features

- ✓ 18-in. chrome-finished alloy wheels
- ✓ Power running boards
- ✓ Adaptive Variable Suspension (AVS) (standard on i-FORCE MAX; available on i-FORCE)
- ✓ Power up/down tailgate with knee-lift assist⁹
- ✓ LED fog lights
- ✓ Power tilt/slide moonroof
- ✓ Chrome-finished exhaust tip

Interior Features

- ✓ 12.3-in. digital meter with selectable gauge display screens
- ✓ Head-Up Display (HUD)
- ✓ SofTex[®]-trimmed⁴² seats
- ✓ Digital display auto-dimming rearview mirror
- ✓ Qi-compatible wireless charging³⁸ and dual USB-C ports⁴³ with power delivery

Audio Multimedia

- ✓ 14-in. audio multimedia touchscreen display
- ✓ JBL^{®7} Premium Audio with ten speakers including JBL^{®7} FLEX portable Bluetooth^{®8} speaker, subwoofer and amplifier; wireless Apple CarPlay^{®5} and Android Auto^{™6} compatibility; SiriusXM^{®4} 3-month trial subscription
- ✓ Head-Up Display (HUD)

Safety Features

- ✓ Toyota Safety Sense[™] 3.0 (TSS 3.0)²⁷ includes:
 - Pre-Collision System with Pedestrian Detection (PCS w/PD)²⁸
 - Proactive Driving Assist (PDA)³⁴
 - Lane Departure Alert with Steering Assist (LDA w/SA)³⁰
 - Automatic High Beams (AHB)³¹
 - Road Sign Assist (RSA)³³
 - Full-Speed Range Dynamic Radar Cruise Control (DRCC)²⁹

Packages/Options

- ✓ Adaptive Variable Suspension (AVS) (standard on i-FORCE MAX; available on i-FORCE)
- ✓ Mudguards

TACOMA MODELS



Trailhunter

Available in Double Cab 5-ft. bed or 6-ft. bed



TRD Pro

Available in Double Cab 5-ft. bed

Mechanical/Performance

- ✓ i-FORCE MAX 2.4L turbocharged hybrid powertrain; 323 hp @ 6000 rpm; 465 lb.-ft. @ 1700 rpm: 8-speed Automatic Transmission
- ✓ 4WDemand part-time 4WD + electronically locking rear differential + Stabilizer Disconnect Mechanism (SDM)
- ✓ Low-profile, rear-facing, high-mount air intake
- ✓ Old Man Emu® 2.5-in. forged monotube shocks
- ✓ High-clearance trail exhaust tip

Exterior Features

- ✓ Rigid Industries®¹² white-and-yellow-color switching LED fog lights
- ✓ Heritage-inspired "TOYOTA" front grille
- ✓ Integrated LED light bar
- ✓ ARB® modular bed utility bar with removable MOLLE panels
- ✓ 18-in. Trailhunter alloy wheels with 33-in. Goodyear®¹¹ Territory® R/T tires
- ✓ High-clearance front bumper
- ✓ ARB® steel rear bumper and red rear recovery hooks
- ✓ Steel underbody protection
- ✓ Steel rock rails

Interior Features

- ✓ Smart Key System with Digital Key²⁴ capability
- ✓ Leather-trimmed manual tilt/telescopic heated steering wheel
- ✓ Digital display auto-dimming rearview mirror with compass and HomeLink®³⁷ universal transceiver
- ✓ 12.3-in. digital meter with selectable gauge display screens
- ✓ Prewired DC power auxiliary switches
- ✓ Qi-compatible wireless charging³⁸ and dual USB-C ports⁴³ with power delivery
- ✓ SofTex®-trimmed⁴² seats
- ✓ Heated and ventilated front seats
- ✓ Power sliding horizontal rear window with privacy glass
- ✓ Dual zone automatic climate control with air filtration
- ✓ Head-Up Display (HUD)
- ✓ Integrated Trailer Brake Controller (ITBC)³⁹
- ✓ 3D Multi-Terrain Monitor (MTM)

Audio Multimedia

- ✓ 14-in. audio multimedia touchscreen display
- ✓ JBL®⁷ Premium Audio with ten speakers including JBL®⁷ FLEX portable Bluetooth®⁸ speaker, subwoofer and amplifier; wireless Apple CarPlay®⁵ and Android Auto™⁶ compatibility; SiriusXM®⁴ 3-month trial subscription

Safety Features

- ✓ Toyota Safety Sense™ 3.0 (TSS 3.0)²⁷ includes:
 - Pre-Collision System with Pedestrian Detection (PCS w/PD)²⁸
 - Proactive Driving Assist (PDA)³⁴
 - Lane Departure Alert with Steering Assist (LDA w/SA)³⁰
 - Automatic High Beams (AHB)³¹
 - Road Sign Assist (RSA)³³
 - Full-Speed Range Dynamic Radar Cruise Control (DRCC)²⁹

Packages/Options

- ✓ Mudguards

Mechanical/Performance

- ✓ i-FORCE MAX 2.4L turbocharged hybrid powertrain; 326 hp @ 6000 rpm; 465 lb.-ft. @ 1700 rpm: 8-speed Automatic Transmission
- ✓ 4WDemand part-time 4WD + electronically locking rear differential + Stabilizer Disconnect Mechanism (SDM)
- ✓ TRD-tuned FOX®¹⁰ QS3 Internal Bypass shocks
- ✓ TRD performance exhaust with black exhaust tips
- ✓ TRD performance cold air intake

Exterior Features

- ✓ Rigid Industries®¹² LED fog lights
- ✓ Heritage-inspired "TOYOTA" front grille
- ✓ Integrated LED light bar
- ✓ Power tilt/slide moonroof with sliding sunshade
- ✓ 18-in. TRD Pro alloy wheels with 33-in. Goodyear®¹¹ Territory® R/T tires
- ✓ High-clearance front bumper
- ✓ ARB® steel rear bumper and red rear recovery hooks
- ✓ TRD Pro aluminum front skid plate
- ✓ Underbody transfer case and fuel tank protection
- ✓ Reinforced rocker protector

Interior Features

- ✓ TRD Pro leather-trimmed manual tilt/telescopic steering wheel with TRD badge and red center stripe
- ✓ Digital display auto-dimming rearview mirror with compass and HomeLink®³⁷ universal transceiver
- ✓ 12.3-in. digital meter with selectable gauge display screens
- ✓ Prewired DC power auxiliary switches
- ✓ Qi-compatible wireless charging³⁸ and dual USB-C ports⁴³ with power delivery
- ✓ TRD Pro SofTex®-trimmed⁴² IsoDynamic performance front seats
- ✓ Heated and ventilated front seats
- ✓ Power tilt/slide moonroof with sliding sunshade
- ✓ Power sliding horizontal rear window with privacy glass
- ✓ Dual zone automatic climate control with air filtration
- ✓ Head-Up Display (HUD)
- ✓ Integrated Trailer Brake Controller (ITBC)³⁹
- ✓ 3D Multi-Terrain Monitor (MTM)

Audio Multimedia

- ✓ 14-in. audio multimedia touchscreen display
- ✓ JBL®⁷ Premium Audio with ten speakers including JBL®⁷ FLEX portable Bluetooth®⁸ speaker, subwoofer and amplifier; wireless Apple CarPlay®⁵ and Android Auto™⁶ compatibility; SiriusXM®⁴ 3-month trial subscription

Safety Features

- ✓ Toyota Safety Sense™ 3.0 (TSS 3.0)²⁷ includes:
 - Pre-Collision System with Pedestrian Detection (PCS w/PD)²⁸
 - Proactive Driving Assist (PDA)³⁴
 - Lane Departure Alert with Steering Assist (LDA w/SA)³⁰
 - Automatic High Beams (AHB)³¹
 - Road Sign Assist (RSA)³³
 - Full-Speed Range Dynamic Radar Cruise Control (DRCC)²⁹

Packages/Options

- ✓ Mudguards

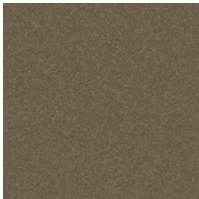
For additional information on TRD Pro, please visit toyota.com/tacoma

See numbered footnotes in Disclosures section.

TACOMA COLORS & TRIMS



Terra



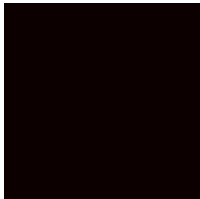
Bronze Oxide



Supersonic Red¹



Solar Octane¹



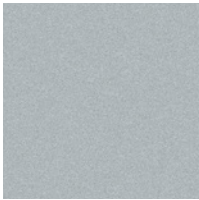
Black



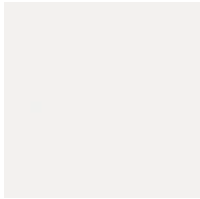
Blue Crush Metallic



Underground



Celestial Silver Metallic



Ice Cap



Wind Chill Pearl¹

SR and SR5 fabric shown in Black



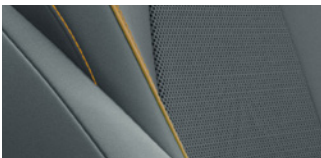
Boulder (SR5 only)

TRD Sport and TRD Off-Road fabric shown in Black



Boulder/Black

Trailhunter SofTex®⁴² trim shown in Mineral



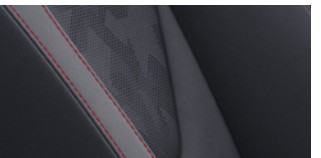
TRD PreRunner fabric shown in Boulder/Black



TRD Sport and TRD Off-Road SofTex®⁴² trim shown in Black



TRD Pro SofTex®⁴² trim shown in Black

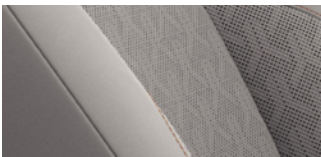


Cockpit Red

Limited SofTex®⁴² trim shown in Black



Limited SofTex®⁴² trim shown in Light Gray



See numbered footnotes in Disclosures section.

TACOMA WHEELS



17-in. steel wheels



17-in. styled alloy wheels



17-in. TRD PreRunner alloy wheels



17-in. TRD Off-Road alloy wheels (i-FORCE)
18-in. TRD Off-Road alloy wheels (i-FORCE MAX)



18-in. TRD Sport alloy wheels



18-in. Limited chrome-finished alloy wheels



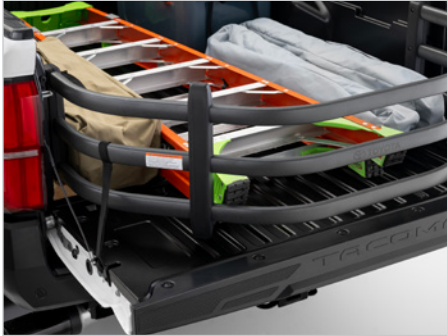
18-in. Trailhunter bronze-finished alloy wheels



18-in. TRD Pro black alloy wheels

TACOMA ACCESSORIES

This is a great way to add extra personality to your Tacoma. Not every accessory is available in your area, so for a complete list of accessories, go to toyota.com/tacoma/accessories.



Bed extender



Bed mat



ARB® bed rack with MOLLE panels



Bed scene light



BedStep®44



Tube step



Exhaust tip in dark chrome



JBL®7 FLEX Bluetooth® speaker



Predator tube steps



Tailgate insert



TRD 18-in. black wheel



Illuminated front badge

TACOMA ACCESSORIES



Roof rack⁴⁵



High-mount air intake



ARB® sport bar with MOLLE panels



High-clearance trail exhaust



TRD performance air intake



TRD performance exhaust

WARRANTIES

Every Toyota Car, Truck and SUV is built to exceptional standards. And that's not idle boasting. We back it up with these Limited Warranty Coverages:

Basic: 36 months/36,000 miles (all components other than normal wear and maintenance items).

Hybrid-Related Component Coverage: Hybrid-related components, including the battery control module, hybrid control module and inverter with converter, are covered for 8 years/100,000 miles. Refer to applicable Warranty and Maintenance Guide for details.

Hybrid Battery: HV battery is covered for 10 years or 150,000 miles, whichever comes first. Warranty coverage is subject to terms and conditions. Refer to applicable Warranty and Maintenance Guide for details

Powertrain: 60 months/60,000 miles (engine, transmission/transaxle, drive system, seatbelts and airbags).

Rust-Through: 60 months/unlimited miles (corrosion perforation of sheet metal).

Emissions: Coverages vary under Federal and California regulations. Refer to applicable *Warranty and Maintenance Guide* for details.

Accessories: For Genuine Toyota Accessories purchased at the time of the new vehicle purchase, the Toyota Accessory Warranty coverage is in effect for 36 months/36,000 miles

from the vehicle's in-service date, which is the same coverage as the Toyota New Vehicle Limited Warranty.

For Genuine Toyota Accessories purchased after the new vehicle purchase the coverage is 12 months, regardless of mileage, from the date the accessory was installed on the vehicle, or the remainder of any applicable new vehicle warranty, whichever provides greater coverage.

Third-party accessories are not designed, manufactured or evaluated by Toyota. The accessories and any damage to other components or altered performance of the vehicle that may be caused by the accessories are not covered by your vehicle's warranty and Toyota disclaims all liability therefor. See third-party warranty website for information on the applicable third-party accessory.

You may be eligible for transportation assistance if it's necessary that your vehicle be kept overnight for repairs covered under warranty. Please see your authorized Toyota dealership for further details.

For complete details about Toyota's warranties, please visit www.toyota.com, refer to the applicable *Warranty and Maintenance Guide* or see your Toyota dealer.

See numbered footnotes in Disclosures section.

TACOMA FEATURES⁴⁶

S = Standard O = Optional A = Available P = Available as part of a package

Exterior	XtraCab			Double Cab						
	SR	SR5	TRD PreRunner	SR	SR5	TRD Sport	TRD Off-Road	Limited	Trailhunter	TRD Pro
5-ft. bed				S	S	S	S	S	S	S
6-ft.bed	S	S	S	S	S	S	S		S	
ARB® modular bed utility bar with removable MOLLE panels									S	
Four fixed cargo bed tie-down points	S	S	S	S	S	S	S	S	S	S
Deck rail system with four adjustable tie-down cleats and four fixed cargo bed tie-down points	P	S	S	S	S	S	S	S	S	S
LED bed lighting	P	P	P	P	P	S	S	S	S	S
Integrated bed scene lighting									S	O
LED headlights with Daytime Running Lights (DRL), auto on/off feature and manual leveling adjustment	S	S	S	S	S	S	S			
LED headlights with Daytime Running Lights (DRL), auto on/off feature, sequential LED turn signals, backlight logos and manual leveling adjustment								S	S	S
LED fog lights		S	S		S	S	S	S		
Rigid Industries® ¹² white-and-amber-color switching LED fog lights									S	
Rigid Industries® ¹² LED fog lights										S
17-in. steel wheels with 245/70R17 tires	S									
17-in. styled alloy wheels with 245/70R17 tires		S		S	S					
17-in. TRD PreRunner alloy wheels with 265/70R17 all-terrain tires			S							
17-in. TRD Sport alloy wheels with all-terrain 265/65R18 tires						S				
18-in. TRD Off-Road alloy wheels with 265/70R17 tires							S			
18-in. TRD Off-Road alloy wheels with 265/70R18 all-terrain tires							A			
18-in. Limited chrome-finished alloy wheels with 265/65R18 tires								S		
18-in. Trailhunter bronze-finished alloy wheels with 33-in. Goodyear® ¹¹ Territory® R/T tires									S	
18-in. TRD Pro black alloy wheels with 33-in. Goodyear® ¹¹ Territory® R/T tires										S
Heritage-inspired “TOYOTA” front grille with integrated light bar									S	S
Color-keyed rear bumper		S	S		S	S	S	S		
High-clearance front bumper									S	S
ARB® steel rear bumper and red rear recovery hooks									S	S
Composite underbody fuel tank protection			S							
Composite front skid plate, with underbody transfer case and fuel tank protection							S			
High-strength underbody protection, including steel front skid plate, steel transfer case protector, steel rear differential protector, and composite fuel tank protector									S	
TRD Pro aluminum front skid plate, with underbody transfer case and fuel tank protection										S
Frame-mounted steel rock rails									S	
Reinforced rocker protector										S
Low-profile, rear-facing, high-mount air intake									S	
Chrome-finished exhaust tip								S		
High-clearance trail exhaust tip									S	
TRD black performance exhaust										S
Front and rear mudguards	O	O	O	O	O	O	O	O	O	O
Power running boards								S		
Interior										
Power tilt/slide moonroof with sliding sunshade						P	P	S		S
Power sliding rear window with privacy glass					P	P	P	S	S	S
Smart Key System on driver door with Push Button Start	S			S						
Smart Key System on driver and front passenger doors with Push Button Start		S	S		S	S	S	S	S	S
Digital Key ²⁴ capability — Digital Key ²⁴ enables smartphone to be used instead of a physical key (Remote Connect ²³ subscription required)	P	P	P	P	P	P	P	S	S	S
Heated front seats		P				P	P			
Fabric-trimmed seats; heated 6-way manually adjustable driver and front passenger seats with 2-way manually adjustable lumbar support on driver’s seat only					P					

TACOMA FEATURES⁴⁶

S = Standard O = Optional A = Available P = Available as part of a package

Interior	XtraCab			Double Cab						
	SR	SR5	TRD PreRunner	SR	SR5	TRD Sport	TRD Off-Road	Limited	Trailhunter	TRD Pro
Fabric-trimmed seats; heated 6-way manually adjustable driver and front passenger seats with 2-way manually adjustable lumbar support on driver's seat only; fold-flat passenger seat		P								
Fabric-trimmed seats; 6-way manually adjustable driver and front passenger seats with 2-way manually adjustable lumbar support on driver's seat only; fold-flat passenger seat	S	S	S							
Fabric-trimmed seats; 6-way manually adjustable driver and front passenger seats with 2-way manually adjustable lumbar support on driver's seat only				S	S	S	S			
Fabric-trimmed seats; heated 8-way power-adjustable driver and front passenger seats with 4-way power-adjustable lumbar support						P	P			
SofTex®-trimmed ⁴² seats; heated and ventilated 8-way power-adjustable driver and front passenger seats with 4-way power-adjustable lumbar support						P	P	S	S	
TRD Pro SofTex®-trimmed ⁴² IsoDynamic Performance seats with contrast stitching and technical-camo-pattern inserts; heated and ventilated 6-way power-adjustable driver and front passenger seats with 2-way manual recline and 4-way power-adjustable lumbar support										S
Heated and ventilated front seats						P	P	S	S	S
Fold-flat passenger seat; lockable rear storage panel with integrated pegboard; and lockable deep storage compartment	S	S	S							
60/40 split, folding rear seat with under- and behind-seat storage (not available on i-FORCE MAX)				S	S	S	S	S		
Manual day/night rearview mirror	S			S						
Auto-dimming day/night rearview mirror		S	S		S	S	S			
Auto-dimming day/night rearview mirror with HomeLink® ³⁷ universal transceiver		P			P	P	P	S	S	S
Digital rearview mirror with HomeLink® ³⁷ universal transceiver						P	P	S	S	S
Dual USB-C ports ⁴³ with power delivery	S	S	S	S	S	S	S	S	S	S
Qi-compatible wireless smartphone charging ³⁸ with charge indicator light						P	P	S	S	S
Automatic climate control with air filtration and combined temperature settings for driver and front passenger						P	P	S	S	S
Dual zone automatic climate control with air filtration and individual temperature settings for driver and front passenger						P	P	S	S	S
Prewired DC power auxiliary switches						P (4X4 only)	P	S	S	S
Polyurethane manual tilt/telescopic steering wheel with phone, audio, display/infotainment, and Driver Assist controls	S	S		S	S					
Leather-trimmed manual tilt/telescopic steering wheel with phone, audio, display/infotainment, and Driver Assist controls		P	S		P	S	S			
Leather-trimmed manual tilt/telescopic heated steering wheel with phone, audio, display/infotainment, and Driver Assist controls		P	P		P	P	P	S	S	
Heated steering wheel		P			P	P	P	S	S	S
TRD Pro leather-trimmed manual tilt/telescopic steering wheel with TRD badge, red center stripe, and phone, audio, display/infotainment, and Driver Assist controls										S
12.3-in. digital meter with selectable gauge display screens and fuel economy, Driver Assist, vehicle/trip information, and warning messages			S			S	S	S	S	S
Head-Up Display (HUD)								S	S	S

Audio Multimedia

8-in. audio multimedia touchscreen display with 4-speaker audio system, wireless Apple CarPlay ⁴⁵ & Android Auto™ ⁴⁶ compatibility, SiriusXM ⁴⁴ 3-month trial subscription. See toyota.com/audio-multimedia for details.	S	S	S							
8-in. audio multimedia touchscreen display with 6-speaker audio system, wireless Apple CarPlay ⁴⁵ & Android Auto™ ⁴⁶ compatibility, SiriusXM ⁴⁴ 3-month trial subscription. See toyota.com/audio-multimedia for details.				S	S	S	S			

Audio Multimedia	XtraCab			Double Cab						
	SR	SR5	TRD PreRunner	SR	SR5	TRD Sport	TRD Off-Road	Limited	Trailhunter	TRD Pro
8-in. audio multimedia touchscreen display with 10-speaker JBL ^{®7} Audio system including JBL ^{®7} FLEX portable <i>Bluetooth</i> ^{®8} speaker, subwoofer and amplifier, wireless Apple CarPlay ^{®5} & Android Auto ^{™6} compatibility, SiriusXM ^{®4} 3-month trial subscription (i-FORCE MAX only). See toyota.com/audio-multimedia for details.					P	P	P			
14-in. audio multimedia touchscreen display with 6-speaker audio system, wireless Apple CarPlay ^{®5} & Android Auto ^{™6} compatibility, SiriusXM ^{®4} 3-month trial subscription. See toyota.com/audio-multimedia for details.						P	P			
14-in. audio multimedia touchscreen display with 10-speaker JBL ^{®7} Audio system including JBL ^{®7} FLEX portable <i>Bluetooth</i> ^{®8} speaker, subwoofer and amplifier, wireless Apple CarPlay ^{®5} & Android Auto ^{™6} compatibility, SiriusXM ^{®4} 3-month trial subscription. See toyota.com/audio-multimedia for details.						P	P	S	S	S

Connected Services

Service Connect ¹⁷ — receive personalized maintenance updates and vehicle health reports. 4G network dependent.	Up to 10-year trial subscription	Up to 10-year trial subscription	Up to 10-year trial subscription	Up to 10-year trial subscription	Up to 10-year trial subscription	Up to 10-year trial subscription	Up to 10-year trial subscription	Up to 10-year trial subscription	Up to 10-year trial subscription	Up to 10-year trial subscription
Remote Connect ²³ — remotely interact with your vehicle through the Toyota app ⁴⁷ via your smartwatch. Depending on grade, allows you to lock/unlock doors, start and stop the vehicle, locate your last parked location, check vehicle status and monitor guest drivers. Subscription required after trial. ²³ 4G network dependent.	1-year trial subscription	1-year trial subscription	1-year trial subscription	1-year trial subscription	1-year trial subscription	1-year trial subscription	1-year trial subscription	1-year trial subscription	1-year trial subscription	1-year trial subscription
Safety Connect ^{®14} — includes Emergency Assistance button, enhanced Roadside Assistance, ¹⁵ Automatic Collision Notification, and Stolen Vehicle Locator. ¹⁶ 4G network dependent.	Up to 10-year trial subscription	Up to 10-year trial subscription	Up to 10-year trial subscription	Up to 10-year trial subscription	Up to 10-year trial subscription	Up to 10-year trial subscription	Up to 10-year trial subscription	Up to 10-year trial subscription	Up to 10-year trial subscription	Up to 10-year trial subscription
Drive Connect ¹⁹ — includes Cloud Navigation ²² with Google Points of Interest (POI) data, Intelligent Assistant ²¹ with Hey, Toyota, and Destination Assist. ²⁰ Subscription required after trial. ¹⁹ 4G network dependent.	Capable; subscription required	Capable; subscription required	Capable; subscription required	Capable; subscription required	Capable; subscription required	Capable; subscription required	Capable; subscription required	1-year trial subscription	1-year trial subscription	1-year trial subscription
Wi-Fi Connect ¹⁸ — includes AT&T Wi-Fi hotspot and Integrated Streaming (Apple Music ^{®48} and Amazon Music ^{®9}) compatibility. Subscription required after trial. ¹⁸ 4G network dependent.	Up to 30-day/3 GB trial subscription	Up to 30-day/3 GB trial subscription	Up to 30-day/3 GB trial subscription	Up to 30-day/3 GB trial subscription	Up to 30-day/3 GB trial subscription	Up to 30-day/3 GB trial subscription	Up to 30-day/3 GB trial subscription	Up to 30-day/3 GB trial subscription	Up to 30-day/3 GB trial subscription	Up to 30-day/3 GB trial subscription

Safety and Convenience

Toyota Safety Sense [™] 3.0 (TSS 3.0) ²⁷ — Pre-Collision System with Pedestrian Detection (PCS w/PD), ²⁸ Proactive Driving Assist (PDA), ³⁴ Lane Departure Alert with Steering Assist (LDA w/SA), ³⁰ Automatic High Beams (AHB), ³¹ Road Sign Assist (RSA), ³³ and Full-Speed Range Dynamic Radar Cruise Control (DRCC) ²⁹	S	S	S	S	S	S	S	S	S	S
Toyota Safety Sense [™] 3.0 (TSS 3.0) ²⁷ (MT) — Pre-Collision System with Pedestrian Detection (PCS w/PD), ²⁸ Lane Departure Alert with Steering Assist (LDA w/SA), ³⁰ Automatic High Beams (AHB), ³¹ Road Sign Assist (RSA), ³³ and Dynamic Radar Cruise Control (DRCC) ⁵⁹				S		S	S			
400W/120V ⁴⁰ AC power supply (i-FORCE)						P	P	S		
2400W/120V ²⁵ AC power supply (i-FORCE MAX)						S	S	S	S	S
Integrated high-output air compressor								S	S	
Blind Spot Monitor (BSM) ²⁶ with Rear Cross-Traffic Alert (RCTA) ⁵⁰	P	S	S	P	S	S	S	S	S	S
Backup Guide Monitor ⁵¹	S	S	S	S	S	S	S	S	S	S
3D Panoramic View Monitor (PVM) ⁵² with selectable front, side and rear views						P		S		
3D Multi-Terrain Monitor (MTM) with selectable front, side and rear views							P		S	S
Integrated Trailer Brake Controller (ITBC) ³⁹ with Multi-Information Display (MID) screen and trailer brake type, gain and manual trailer brake output controls		P	P		P	P	P	S	S	S
Class-IV towing hitch receiver and wiring harness with 7-pin/4-pin connector ³⁵	P	S	S	S	S	S	S			
Class-IV towing hitch receiver and wiring harness with 7-pin/4-pin connector; ³⁵ Trailer Backup Guide (TBG); ⁵¹ Trailer Blind Spot Monitor Trailer Camera ²⁶						P	P	S	S	S
Lightweight “TACOMA” stamped tailgate	S	S		S	S					
Lightweight “TACOMA” stamped tailgate with damper		P	S		P	S	S			
“TACOMA” stamped power open-and-close tailgate with hands-free knee-lift assist and jam protection ⁹						P	P	S	S	

Safety and Convenience	XtraCab			Double Cab						
	SR	SR5	TRD PreRunner	SR	SR5	TRD Sport	TRD Off-Road	Limited	Trailhunter	TRD Pro
“TRD Pro” stamped power open-and-close tailgate with hands-free knee-lift assist, integrated taillight bump switches, and jam protection ⁹										
S										

Packages and Options

14-In. Audio Multimedia Display Package	P	P
TRD Off-Road Premium Package (i-FORCE MAX) — includes SofTex®-trimmed ⁴² seats with heated and ventilated 8-way power-adjustable front seats, leather-trimmed heated steering wheel, 14-in. audio multimedia touchscreen display, Multi-Terrain Monitor (MTM), JBL ^{®7} Premium Audio with JBL ^{®7} FLEX portable speaker, moonroof, Qi-compatible wireless charging, ³⁸ dual zone automatic climate control, Front and Rear Parking Assist with Automatic Braking (PA w/AB) ³⁶ and Pedestrian Detection, prewired auxiliary switches, digital rearview mirror, Towing Technology Package: including Integrated Trailer Brake Controller (ITBC), ³⁹ power open/close tailgate, ⁹ Digital Key ²⁴ capability, and power horizontal rear window		P
TRD Off-Road Premium Package (A/T) — includes SofTex®-trimmed ⁴² seats with heated and ventilated 8-way power-adjustable front seats, leather-trimmed heated steering wheel, 14-in. audio multimedia touchscreen display, Multi-Terrain Monitor (MTM), JBL ^{®7} Premium Audio with JBL ^{®7} FLEX portable speaker, moonroof, Qi-compatible wireless charging, ³⁸ dual zone automatic climate control, Front and Rear Parking Assist with Automatic Braking (PA w/AB) ³⁶ and Pedestrian Detection, prewired auxiliary switches, digital rearview mirror, Towing Technology Package: including Integrated Trailer Brake Controller (ITBC), ³⁹ power open/close tailgate, ⁹ Digital Key ²⁴ capability, 400W/120V ⁴⁰ AC power inverter, and power horizontal rear window		P
TRD Off-Road Premium Package (M/T) — includes SofTex®-trimmed ⁴² seats with heated and ventilated 8-way power-adjustable front seats, leather-trimmed heated steering wheel, 14-in. audio multimedia touchscreen display, Multi-Terrain Monitor (MTM), JBL ^{®7} Premium Audio with JBL ^{®7} FLEX portable speaker, moonroof, Qi-compatible wireless charging, ³⁸ dual zone automatic climate control, Front and Rear Parking Assist Sonar, ⁶⁰ prewired auxiliary switches, digital rearview mirror, Towing Technology Package: including Integrated Trailer Brake Controller (ITBC), ³⁹ power open/close tailgate, ⁹ Digital Key ²⁴ capability, 400W/120V ⁴⁰ AC power inverter, and power horizontal rear window		P
TRD Off-Road Upgrade Package (A/T) — includes fabric-trimmed seats with heated 8-way power-adjustable front seats, leather-trimmed heated steering wheel, JBL ^{®7} Premium Audio with JBL ^{®7} FLEX portable speaker, Qi-compatible wireless charging, ³⁸ Front and Rear Parking Assist with Automatic Braking (PA w/AB), ³⁶ prewired auxiliary switches, Integrated Trailer Brake Controller (ITBC), ³⁹ Digital Key ²⁴ capability, 400W/120V ⁴⁰ AC power inverter, and power horizontal rear window		P
TRD Off-Road Upgrade Package (M/T) — includes fabric-trimmed seats with heated 8-way power-adjustable front seats, leather-trimmed heated steering wheel, JBL ^{®7} Premium Audio with JBL ^{®7} FLEX portable speaker, Qi-compatible wireless charging, ³⁸ Front and Rear Parking Assist Sonar, ⁶⁰ prewired auxiliary switches, Integrated Trailer Brake Controller (ITBC), ³⁹ Digital Key ²⁴ capability, 400W/120V ⁴⁰ AC power inverter, and power horizontal rear window		P
TRD Sport Premium Package (i-FORCE MAX) — includes SofTex®-trimmed ⁴² seats with heated and ventilated 8-way power-adjustable front seats, leather-trimmed heated steering wheel, 14-in. audio multimedia touchscreen display, Panoramic View Monitor (PVM), ⁵² JBL ^{®7} Premium Audio with JBL ^{®7} FLEX portable speaker, moonroof, Qi-compatible wireless charging, ³⁸ dual zone automatic climate control, Front and Rear Parking Assist with Automatic Braking (PA w/AB) ³⁶ and Pedestrian Detection, prewired auxiliary switches, digital rearview mirror, Towing Technology Package: including Integrated Trailer Brake Controller (ITBC), ³⁹ power open/close tailgate, ⁹ Digital Key ²⁴ capability, and power horizontal rear window	P	

Packages and Options	XtraCab			Double Cab						
	SR	SR5	TRD PreRunner	SR	SR5	TRD Sport	TRD Off-Road	Limited	Trailhunter	TRD Pro
TRD Sport Premium Package (4WD A/T) — includes SofTex®-trimmed ⁴² seats with heated and ventilated 8-way power-adjustable front seats, leather-trimmed heated steering wheel, 14-in. audio multimedia touchscreen display, Panoramic View Monitor (PVM), ⁵² JBL ^{®7} Premium Audio with JBL ^{®7} FLEX portable speaker, moonroof, Qi-compatible wireless charging, ³⁸ dual zone automatic climate control, Front and Rear Parking Assist with Automatic Braking (PA w/AB) ³⁶ and Pedestrian Detection, prewired auxiliary switches, digital rearview mirror, Towing Technology Package: including Integrated Trailer Brake Controller (ITBC), ³⁹ power open/close tailgate, ⁹ Digital Key ²⁴ capability, 400W/120V ⁴⁰ AC power inverter, and power horizontal rear window										
P										
TRD Sport Premium Package (4WD M/T) — includes SofTex®-trimmed ⁴² seats with heated and ventilated 8-way power-adjustable front seats, leather-trimmed heated steering wheel, 14-in. audio multimedia touchscreen display, Panoramic View Monitor (PVM), ⁵² JBL ^{®7} Premium Audio with JBL ^{®7} FLEX portable speaker, moonroof, Qi-compatible wireless charging, ³⁸ dual zone automatic climate control, Front and Rear Parking Assist Sonar, ⁶⁰ prewired auxiliary switches, digital rearview mirror, Towing Technology Package: including Integrated Trailer Brake Controller (ITBC), ³⁹ power open/close tailgate, ⁹ Digital Key ²⁴ capability, 400W/120V ⁴⁰ AC power inverter, and power horizontal rear window										
P										
TRD Sport Premium Package (2WD) — includes SofTex®-trimmed ⁴² seats with heated and ventilated 8-way power-adjustable front seats, leather-trimmed heated steering wheel, 14-in. audio multimedia touchscreen display, Panoramic View Monitor (PVM), ⁵² JBL ^{®7} Premium Audio with JBL ^{®7} FLEX portable speaker, moonroof, Qi-compatible wireless charging, ³⁸ dual zone automatic climate control, Front and Rear Parking Assist with Automatic Braking (PA w/AB) ³⁶ and Pedestrian Detection, digital rearview mirror, Towing Technology Package: including Integrated Trailer Brake Controller (ITBC), ³⁹ power open/close tailgate, ⁹ Digital Key ²⁴ capability, 400W/120V ⁴⁰ AC power inverter, and power horizontal rear window										
P										
TRD Sport Upgrade Package (i-FORCE MAX) — includes fabric-trimmed seats with heated 8-way power-adjustable front seats, leather-trimmed heated steering wheel, JBL ^{®7} Premium Audio with JBL ^{®7} FLEX portable speaker, Qi-compatible wireless charging, ³⁸ Front and Rear Parking Assist with Automatic Braking (PA w/AB), ³⁶ prewired auxiliary switches, Integrated Trailer Brake Controller (ITBC), ³⁹ Digital Key ²⁴ capability, and power horizontal rear window										
P										
TRD Sport Upgrade Package (4WD A/T) — includes fabric-trimmed seats with heated 8-way power-adjustable front seats, leather-trimmed heated steering wheel, JBL ^{®7} Premium Audio with JBL ^{®7} FLEX portable speaker, Qi-compatible wireless charging, ³⁸ Front and Rear Parking Assist with Automatic Braking (PA w/AB), ³⁶ prewired auxiliary switches, Integrated Trailer Brake Controller (ITBC), ³⁹ Digital Key ²⁴ capability, 400W/120V ⁴⁰ AC power inverter, and power horizontal rear window										
P										
TRD Sport Upgrade Package (4WD M/T) — includes fabric-trimmed seats with heated 8-way power-adjustable front seats, leather-trimmed heated steering wheel, JBL ^{®7} Premium Audio with JBL ^{®7} FLEX portable speaker, Qi-compabile wireless charging, ³⁸ Front and Rear Parking Assist Sonar, ⁶⁰ prewired auxiliary switches, Integrated Trailer Brake Controller (ITBC), ³⁹ Digital Key ²⁴ capability, 400W/120V ⁴⁰ AC power inverter, and power horizontal rear window										
P										
TRD Sport Upgrade Package (2WD) — includes fabric-trimmed seats with heated 8-way power-adjustable front seats, leather-trimmed heated steering wheel, JBL ^{®7} Premium Audio with JBL ^{®7} FLEX portable speaker, Qi-compatible wireless charging, ³⁸ Front and Rear Parking Assist with Automatic Braking (PA w/AB), ³⁶ Integrated Trailer Brake Controller (ITBC), ³⁹ Digital Key ²⁴ capability, 400W/120V ⁴⁰ AC power inverter, and power horizontal rear window										
P										

TACOMA FEATURES⁴⁶

S = Standard O = Optional A = Available P = Available as part of a package

Packages and Options	XtraCab			Double Cab						
	SR	SR5	TRD PreRunner	SR	SR5	TRD Sport	TRD Off-Road	Limited	Trailhunter	TRD Pro
TRD PreRunner Upgrade Package (XtraCab) — including HomeLink ^{®37} universal transceiver, Qi-compatible wireless charging, ³⁸ Front and Rear Parking Assist with Automatic Braking (PA w/AB), ³⁶ LED bed lights, Integrated Trailer Brake Controller (ITBC), ³⁹ and Digital Key ²⁴ capability			P							
SR5 Upgrade + Cold Weather Package (Double Cab) — includes heated front seats, leather-trimmed heated steering wheel, leather-trimmed shift knob, JBL ^{®7} Premium Audio with JBL ^{®7} FLEX portable speaker, HomeLink ^{®37} universal transceiver, Qi-compatible wireless charging, ³⁸ automatic climate control, Front and Rear Parking Assist with Automatic Braking (PA w/AB), ³⁶ rear under-seat storage compartment, LED bed lights, easy lower tailgate, Integrated Trailer Brake Controller (ITBC), ³⁹ Digital Key ²⁴ capability, and power horizontal rear window			P							
SR5 Upgrade + Cold Weather Package (XtraCab) — includes heated seats, leather-trimmed heated steering wheel, leather-trimmed shift knob, HomeLink ^{®37} universal transceiver, Qi-compatible wireless charging, ³⁸ automatic climate control, Front and Rear Parking Assist with Automatic Braking (PA w/AB), ³⁶ LED bed lights, easy lower tailgate, Integrated Trailer Brake Controller (ITBC), ³⁹ and Digital Key ²⁴ capability			P							
SR5 Upgrade Package (Double Cab) — including leather-trimmed steering wheel and shift knob, JBL ^{®7} Premium Audio with JBL ^{®7} FLEX portable speaker, HomeLink ^{®37} universal transceiver, Qi-compatible wireless charging, ³⁸ automatic climate control, Front and Rear Parking Assist with Automatic Braking (PA w/AB), ³⁶ LED bed lights, easy lower tailgate, Integrated Trailer Brake Controller (ITBC), ³⁹ Digital Key ²⁴ capability, and power horizontal rear window						P				
SR5 Upgrade Package (XtraCab) — including leather-trimmed steering wheel and shift knob, HomeLink ^{®37} universal transceiver, Qi-compatible wireless charging, ³⁸ automatic climate control, Front and Rear Parking Assist with Automatic Braking (PA w/AB), ³⁶ LED bed lights, easy lower tailgate, Integrated Trailer Brake Controller (ITBC), ³⁹ and Digital Key ²⁴ capability			P							
SR Upgrade Package (AT) — includes Blind Spot Monitor (BSM), ²⁶ Front and Rear Parking Assist with Automatic Braking (PA w/AB), ³⁶ LED bed lights, deck rail and cleats, Digital Key ²⁴ capability	P			P						
SR Upgrade Package (MT) — includes Blind Spot Monitor (BSM), ²⁶ Front and Rear Parking Assist Sonar, ⁶⁰ LED bed lights, deck rail and cleats, Digital Key ²⁴ capability				P						
Adaptive Variable Suspension (AVS)								A		
14-in. audio multimedia touchscreen display						P	P			
Deck rail system with four adjustable tie-down cleats and fixed cargo bed tie-down points	P			P	P					
Heated front seats		P			P	P	P			
Moonroof						P	P			
Mudguards	A	A	A	A	A	A	A	A	A	A
Stabilizer Disconnect Mechanism (SDM)							A		S	S
Towing Package — includes Class-IV towing hitch receiver and wiring harness with 7-pin/4-pin connector ³⁵	P									

Mechanical/Performance

ENGINE										
i-FORCE 2.4L turbocharged engine	S	S	S	S	S	S	S	S		
i-FORCE MAX 2.4L turbocharged hybrid powertrain						A	A	A	S	S
AIR INTAKE										
TRD performance cold air intake										S
High-mount air intake									S	
TRANSMISSION										
8-speed Electronically Controlled automatic Transmission with intelligence (ECT-i), sequential shift mode, and uphill/downhill shift logic	S	S	S	S	S	S	S	S	S	S
6-speed intelligent Manual Transmission (IMT2) with automatic rev-matching and anti-stall technology				A		A	A			

TACOMA SPECIFICATIONS

S = Standard O = Optional A = Available P = Available as part of a package

Mechanical/Performance	XtraCab			Double Cab						
	SR	SR5	TRD PreRunner	SR	SR5	TRD Sport	TRD Off-Road	Limited	Trailhunter	TRD Pro
RATIOS										
4x4 transfer case ratio (high/low)	1.00:1/2.57:1	1.00:1/2.57:1		1.00:1/2.57:1	1.00:1/2.57:1	1.00:1/2.57:1	1.00:1/2.57:1	1.00:1/2.57:1	1.00:1/2.57:1	1.00:1/2.57:1
Differential ratio (Automatic Transmission)	3.583	3.583	3.583	3.583	3.583	3.583	3.583	3.583	3.583	3.583
Differential ratio (Manual Transmission)				4.3		4.3	4.3			
DRIVETRAIN										
Rear-Wheel Drive (RWD) with Automatic Limited-Slip Differential (Auto LSD) ⁵³	S	S	S	S	S	S				
4WDDemand part-time 4-Wheel Drive with electronically controlled 2-speed transfer case (high/low range) and Active Traction Control (A-TRAC)	A	A		A	A	A	S	S (i-FORCE)	S	S
Full-time 4-Wheel Drive with electronic locking center differential								S (i-FORCE MAX)		
SUSPENSION										
Independent double-wishbone front suspension; leaf spring rear suspension	S	S	S	S						
Independent double-wishbone front suspension; coil spring multi-link rear suspension					S	S	S	S	S	S
Trailhunter off-road suspension, including Old Man Emu® forged monotube position-sensitive coil-overs and rear remote-reservoir shocks with 1-in. front lift and 0.5-in. rear lift									S	
TRD Pro off-road suspension, including FOX® ¹⁰ QS3 adjustable Internal Bypass coil-overs and rear remote-reservoir shocks with 1-in. front and 0.5-in. rear lift										S
Adaptive Variable Suspension (AVS) system								A		
OFF-ROAD										
Electronically controlled locking rear differential			S				S		S	S
Stabilizer Disconnect Mechanism (SDM)							A		S	S
ARB® steel rear bumper with red-painted recovery hooks									S	S
Multi-Terrain Select (MTS), Crawl Control (CRAWL) ⁵⁴ and Downhill Assist Control (DAC) ⁵⁵ (A/T only)							S		S	S
Dimensions										
EXTERIOR (IN.)										
Overall length (5-ft. bed/6-ft. bed)	213	213	213	213	213/226.2	213/226.2	213/226.2	213	213/226.2	213
Overall width	76.9	76.9	77.9	76.9	76.9	77.9	77.9	77.9	77.9	77.9
Overall height	74	73.9	74.6	73.8	73.8	74.4-74.7	74.6-75.3	77.9	75.5-75.8	75.8
Wheelbase (5-ft. bed/6-ft. bed)	131.9	131.9	131.9	131.9	131.9/145.1	131.9/145.1	131.9/145.1	131.9	131.9/145.1	131.9
Inside bed depth (4x2/4x4)	20.2/21.2	20.2/21.2	20.2/—	20.2/21.2	20.2/21.2	20.2/21.2	—/21.2	—/21.2	—/21.2	—/21.2
Inside bed length (5-ft. bed/6-ft. bed)	60.3/73.5	60.3/73.5	—/73.5	60.3/73.5	60.3/73.5	60.3/73.5	60.3/73.5	60.3/—	60.3/73.5	60.3/—
Inside bed width (at tailgate)	53	53	53	53	53	53	53	53	53	53
Inside bed width (at accessory rail)	56.4	56.4	56.4	56.4	56.4	56.4	56.4	56.4	56.4	56.4
Inside bed width (between wheelwells)	44.7	44.7	44.7	44.7	44.7	44.7	44.7	44.7	44.7	44.7
INTERIOR (IN.)										
Head room (front/rear)	39.7/—	39.7/—	39.7/—	39.7/38.4	39.7/38.4	39.7/38.4	39.7/38.4		39.7/38.4	
Head room (front/rear) with moonroof						38.0/38.4	38.0/38.4	38.0/38.4		38.0/38.4
Shoulder room (front/rear)	58.3/—	58.3—	58.3/—	58.3/57.8	58.3/57.8	58.3/57.8	58.3/57.8	58.3/57.8	58.3/57.8	
Hip room (front/rear)	56.8/—	56.8/—	56.8/—	56.8/56.3	56.8/56.3	56.8/56.3	56.8/56.3	56.8/56.3	56.8/56.3	56.8/56.3
Leg room (front/rear)	41.8/—	41.8/—	41.8/—	41.8/33.7	41.8/33.7	41.8/33.7	41.8/33.7	41.8/33.7	41.8/33.7	
Base curb weight (lbs), i-FORCE 2.4L (4x2/4x4)	4145/4375	4145/4375	4200/—	4280/4505	4265 (5-ft. bed)/ 4365 (6-ft. bed)/ 4500 (5-ft. bed)/ 4600 (6-ft. bed)	4330 (5-ft. bed)/ 4345 (6-ft. bed)/ 4575 (5-ft. bed)/ 4600 (6-ft. bed)	—/4630 (5-ft. bed)/ 4650 (6-ft. bed)	—/4715		
Base curb weight (lbs.), i-FORCE 2.4L MT (4x2/4x4)				—/4485		—/4605	—/4650			

TACOMA FEATURES⁴⁶

S = Standard O = Optional A = Available P = Available as part of a package

Weights and Capacities	XtraCab			Double Cab						
	SR	SR5	TRD PreRunner	SR	SR5	TRD Sport	TRD Off-Road	Limited	Trailhunter	TRD Pro
Base curb weight (lbs.), i-FORCE MAX 2.4L (4x4)						5045	5030	5170	5360 (5-ft. bed)/ 5410 (6-ft. bed)	5100
Gross Vehicle Weight Rating (GVWR) (lbs.), i-FORCE 2.4L (4x2/4x4)	5605/5605	5605/5605	5605/—	5775/6005	5775 (5-ft. bed)/ 5970 (6-ft. bed)/ 6005 (5-ft. bed)/ 6005 (6-ft. bed)	5775 (5-ft. bed)/ 6025 (6-ft. bed)/ 6005 (5-ft. bed)/ 6300 (6-ft. bed)	—/6240 (5-ft. bed)/ 6305 (6-ft. bed)	—/6305		
Gross Vehicle Weight Rating (GVWR) (lbs.), i-FORCE 2.4L MT (4x2/4x4)				—/5865		—/6175	—/6175			
Gross Vehicle Weight Rating (GVWR) (lbs.), i-FORCE MAX 2.4L (4x4)						6665	6735	6780	6835 (5-ft. bed)/ 6835 (6-ft. bed)	6780
Maximum payload (lbs.), i-FORCE 2.4L AT (4x2/4x4)	1460/1230	1460/1230	1405/—	1495/1500	1510 (5-ft. bed)/ 1605 (6-ft. bed)/ 1505 (5-ft. bed)/ 1405 (6-ft. bed)	1445 (5-ft. bed)/ 1680 (6-ft. bed)/ 1430 (5-ft. bed)/ 1700 (6-ft. bed)	—/1610 (5-ft. bed)/ 1655 (6-ft. bed)	—/1590		
Maximum payload (lbs.), i-FORCE 2.4L MT (4x2/4x4)				—/1380		—/1570	—/1525			
Maximum payload (lbs.), i-FORCE MAX 2.4L (4x4)						1620	1705	1610	1475 (5-ft. bed)/ 1425 (6-ft. bed)	1680
Engine oil capacity (qt. with filter), i-FORCE 2.4L/i-FORCE MAX 2.4L	5.6/—	5.6/—	5.6/—	5.6/—	5.6/—	5.6/5.6	5.6/5.6	5.6/5.6	—/5.6	—/5.6
Cooling system (qt.), i-FORCE 2.4L/i-FORCE MAX 2.4L	12.8/—	12.8/—	12.8/—	12.8/—	12.8/—	12.8/12.6	12.8/12.6	12.8/12.6	—/12.6	—/12.6
Fuel tank (gal.), i-FORCE 2.4L/i-FORCE MAX 2.4L	18.2/—	18.2/—	18.2/—	18.2/—	18.2/—	18.2/18.2	18.2/18.2	18.2/18.2	—/18.2	—/18.2
Seating capacity	2	2	2	5	5	5	5	5	5	5

Towing³⁵

Maximum towing weight (lbs.)	3500	6500	6500	3500	6400	6400	6400	6300	6000	6000
Maximum tongue weight (lbs.)	650	650	650	640	640	640	640	640	640	640
Passenger-side front recovery points	S	S		S	S	S		S		
Driver-side and passenger-side front recovery points			S				S			
Driver-side and passenger-side front and rear recovery points									S	S

Tires

Spare: full-size	S	P	S		P	S	S	S	S	S
------------------	---	---	---	--	---	---	---	---	---	---

Mileage Estimates (mpg city/highway)⁵⁷

i-FORCE 2.4L turbocharged engine										
4x2	20/26	21/26	20/24	20/26	21/26	20/24	—	—	—	—
4x4/MT	19/24	19/24	—	19/24; 18/23	19/24	19/23; 18/23	19/23; 18/23	20/23	—	—
i-FORCE MAX 2.4L turbocharged hybrid										
4x4	—	—	—	—	—	22/24	22/24	23/24	22/24	22/24

DISCLOSURES

1. Extra-cost color. 2. The Toyota Tacoma is designed to meet most off-road driving requirements, but off-roading is inherently dangerous and may result in vehicle damage. Toyota encourages responsible operation to help protect you, your vehicle and the environment. Seatbelts should be worn at all times. Do not allow passengers to ride in cargo area.

3. Be sure to obey traffic regulations and maintain awareness of road and traffic conditions at all times. System functionality and accuracy of information depends on many factors. Use common sense when relying on information provided. Services and programming subject to change. Updates may be at an additional cost. See *Owner's Manual* for limitations.

4. Service will automatically stop at the end of your trial subscription period unless you decide to continue service. Trial is non-transferable. If you do not wish to enjoy your trial, you can cancel by calling the number below. All SiriusXM services require a subscription, each sold separately by SiriusXM after the trial period. Service subject to the SiriusXM Customer Agreement and Privacy Policy, visit siriusxm.com for complete terms and how to cancel which includes online methods or calling 1-866-635-2349. Some services and features are subject to device capabilities and location availability. Satellite service not available in AK & HI. Content varies by SiriusXM subscription plan. All fees, content and features are subject to change. SiriusXM and related logos are trademarks of Sirius XM Radio Inc. and its respective subsidiaries.

5. To wirelessly use Apple CarPlay® on your car display, you need a compatible smartphone with an active data plan. You can check which smartphones are compatible at <https://www.apple.com/ios/carplay/>. Operability depends on network availability, a cellular connection and GPS signal. Services subject to change at any time without notice. Data charges may apply. To learn more, go to <https://www.toyota.com/audio-multimedia/>. To learn more about Toyota's Connected Services data collection, use, sharing and retention practices, please visit <https://www.toyota.com/support/privacy-rights/>. Apple CarPlay® is a registered trademark of Apple Inc.

6. Google, Android, Android Auto, YouTube Music and other marks are trademarks of Google LLC. Wireless use of Android Auto requires a compatible Android 11.0+ phone and compatible active data plan. Check g.co/androidauto/requirements for compatibility. Operability depends on network availability, a cellular connection and GPS signal. Services subject to change at any time without notice. Data charges may apply. To learn more, go to <https://www.toyota.com/audio-multimedia/>. To learn more about Toyota's Connected Services data collection, use, sharing and retention practices, please visit <https://www.toyota.com/support/privacy-notice/>.

7. JBL® is a registered trademark of Harman International Industries, Inc.

8. A compatible Bluetooth®-enabled phone must first be paired. Phone performance depends on software, coverage and carrier. The Bluetooth® word mark and logos are registered trademarks of Bluetooth SIG, Inc. Use of such marks by Toyota is under license.

9. Liftgate requires key fob present.

10. FOX is a registered trademark of FOX Factory, Inc.

11. Goodyear® is a registered trademark of The Goodyear Tire & Rubber Company.

12. Rigid Industries® is a registered trademark of JST Performance, LLC d/b/a Rigid Industries.

13. Toyota Connected Services depend on certain factors outside of Toyota's control in order to operate, including cellular network availability and GPS signal. Without either of these things, operability may be limited or precluded, including access to response center and emergency support. Services vary by vehicle and are subject to change at any time without notice. Requires app download/registration and subscription after trial (if applicable). Terms of Use apply. Data charges may apply. See *Owner's Manual* and <https://www.toyota.com/connected-services/>. For Toyota's Connected Services' data collection, use, sharing and retention practices, please visit <https://www.toyota.com/support/privacy-notice/>. All trials begin on original purchase or lease date of new vehicle, with the exception of Wi-Fi for which trial begins at time of activation. Paid subscription required after trial (if applicable).

14. Safety Connect® depends on factors outside of Toyota's control in order to operate, including cellular network availability and GPS signal. Without either of these things, operability may be limited or precluded, including access to response center and emergency support. Stolen vehicle police report required to use Stolen Vehicle Locator. If subscription includes Automatic Collision Notification, it will activate only in limited circumstances. Services vary by vehicle and are subject to change at any time without notice. Terms of Use apply. Data charges may apply. See *Owner's Manual* and <https://www.toyota.com/connected-services/>. For Toyota's Connected Services' data collection, use, sharing and retention practices, please visit <https://www.toyota.com/support/privacy-notice/>. A Safety Connect® trial is included for up to 10 years on select vehicles with paid Connected Services packages. See your Toyota dealer for details. 4G network dependent.

15. Requires cellular network availability, a cellular connection and GPS signal. May not work in all areas. Service may vary by vehicle and region. See Toyota dealer for details and exclusions.

16. Building and/or parking structures may limit system effectiveness. Stolen vehicle police report required to use Stolen Vehicle Locator. For additional assistance contact the Toyota Brand Engagement Center at 1-800-331-4331.

17. Service Connect depends on certain factors outside of Toyota's control in order to operate, including cellular network availability and GPS signal. Without either of these things, operability may be limited or precluded. Information provided is based on the last time data was collected from vehicle and is not real-time data. Services vary by vehicle and are subject to change at any time without notice. Terms of Use apply. Data charges may apply. See usage precautions and service limitations in *Owner's Manual* and <https://www.toyota.com/connected-services/>. To learn about Toyota's Connected Services' data collection, use, sharing and retention practices, please visit <https://www.toyota.com/support/privacy-notice/>. The Service Connect trial is included for up to 10 years. 4G network dependent.

18. Service not available everywhere or in every vehicle. Depends on cellular network availability and GPS signal. Without either of these things, operability may be limited or precluded. Up to 5 devices can be supported using in-vehicle connectivity. Services subject to change at any time without notice. The Wi-Fi Connect trial begins at the time of enrollment and expires the earlier of 3 GB data use or the 1-month trial period ends. Paid subscription required after trial. Select models include Integrated Streaming capability, which requires a separate subscription to third-party provider services. Data charges may apply. Valid in the contiguous U.S. and Alaska. Go to <https://myvehicle.att.com/#/toyota/learn?language=en&country=US> for terms and conditions. The Wi-Fi Connect trial begins at the time of enrollment and expires when 30 days or the earlier of 3 GB of data is used or the 1-month period ends. Subscription required after trial. Integrated Streaming requires separate subscriptions to third-party provider services. Terms of Use apply.

19. Drive Connect availability and accuracy depend on certain factors outside of Toyota's control in order to operate, including 4G network availability, a cellular connection and GPS signal. Without any one or more of these things, operability may be limited or precluded. Services subject to change at any time without notice. Requires app download/registration and subscription after trial (if applicable). Terms of Use apply. Data charges may apply. See *Owner's Manual* and <https://www.toyota.com/connected-services/> for limitations. To learn about Toyota's Connected Services data collection, use, sharing and retention practices, visit <https://www.toyota.com/support/privacy-notice/>. Trial period begins on original purchase or lease date of new vehicle. Paid subscription required after trial (if applicable). Terms of Use apply.

20. On select models, Destination Assist will require a trial or subscription to Drive Connect. Availability and accuracy depend on certain factors outside of Toyota's control in order to operate, including a cellular connection and GPS signal. Without either of these, operability may be limited or precluded. Services subject to change at any time without notice. Requires app download/registration and subscription to Drive Connect after trial (if applicable). Terms of Use apply. Data charges may apply. See *Owner's Manual* and <https://www.toyota.com/connected-services/> for limitations. To learn about Toyota's Connected Services data collection, use, sharing and retention practices, visit <https://www.toyota.com/support/privacy-notice/>. The Destination Assist trial period begins on original purchase or lease date of new vehicle. Paid subscription required after trial (if applicable). Terms of Use apply.

21. Intelligent Assistant requires a trial or subscription to Drive Connect. Drive Connect availability and accuracy depend on certain factors outside of Toyota's control in order to operate, including 4G network availability, a cellular connection and GPS signal. Without any one or more of these things, operability may be limited or precluded. Services subject to change at any time without notice. Requires app download/registration and subscription after trial (if applicable). Terms of Use apply. Data charges may apply. See *Owner's Manual* and <https://www.toyota.com/connected-services/> for limitations. To learn about Toyota's Connected Services data collection, use, sharing and retention practices, visit <https://www.toyota.com/support/privacy-notice/>.

22. Cloud Navigation requires a trial or subscription to Drive Connect. Drive Connect availability and accuracy depend on certain factors outside of Toyota's control in order to operate, including 4G network availability, a cellular connection and GPS signal. Without any one or more of these things, operability may be limited or precluded. Services subject to change at any time without notice. Requires app download/registration and subscription after trial (if applicable). Terms of Use apply. Data charges may apply. See *Owner's Manual* and <https://www.toyota.com/connected-services/> for limitations. To learn about Toyota's Connected Services data collection, use, sharing and retention practices, visit <https://www.toyota.com/support/privacy-notice/>.

23. Use only if aware of circumstances surrounding vehicle and it is legal and safe to do so (e.g., do not remotely start a gas engine vehicle in an enclosed space or if vehicle is occupied by a child). Remote Connect depends on certain factors outside of Toyota's control in order to operate, including 4G network availability, a cellular connection and GPS signal. Without any one or more of these things, operability may be limited or precluded. Services subject to change at any time without notice. Digital Key also requires Bluetooth® connectivity. Remote start/stop not available on manual transmission-equipped models. Remote start/stop and/or lock/unlock available on select models. Remote Connect is included with select paid Connected Services packages. See your Toyota dealer for details. Terms of Use apply. Data charges may apply. See *Owner's Manual* and <https://www.toyota.com/connected-services/> for additional details. To learn about Toyota's Connected Services' data collection, use, sharing and retention practices, please visit <https://www.toyota.com/support/privacy-notice/>. Trial period begins on original purchase or lease date of new vehicle. Paid subscription required after trial (if applicable). Terms of Use apply.

24. Digital Key function requires Remote Connect trial or subscription. Use only if aware of circumstances surrounding vehicle and it is legal and safe to do so (e.g., do not remotely start engine if vehicle is in an enclosed space or vehicle is occupied by a child). Remote Connect depends on factors outside of Toyota's control, including an operative telematics device, a cellular connection, GPS signal, and the availability of a compatible wireless network, without which system functionality and availability may be limited or precluded. Digital Key also requires Bluetooth® connectivity. Service may vary by vehicle and region. Requires app download and registration/subscription after trial (if applicable). Terms of Use apply. Data charges may apply. Remote start/stop not available on manual transmission-equipped vehicles. Services subject to change at any time without notice. See usage precautions and service limitations in Toyota *Owner's Manual* and at <https://www.toyota.com/connected-services/> for additional details. To learn about Toyota's Connected Services data collection, use, sharing and retention practices, please visit <https://www.toyota.com/support/privacy-notice/>.

25. Rated for 2400 watts for a single three-prong outlet. See *Owner's Manual* for limitations.

26. Do not rely exclusively on Blind Spot Monitor. Look over shoulder and use turn signal. See *Owner's Manual* for limitations.

27. Toyota Safety Sense™ effectiveness is dependent on many factors including road, weather and vehicle conditions. Drivers are responsible for their own safe driving. Always pay attention to your surroundings and drive safely. See *Owner's Manual* for limitations.

28. The Pre-Collision System (PCS) with Pedestrian Detection (PD) is designed to determine if impact is imminent and help reduce impact speed and damage in certain frontal collisions involving a vehicle, a pedestrian, a bicycle, or a motorcyclist. PCS w/PD is not a substitute for safe and attentive driving. System effectiveness depends on many factors, such as speed, size and position of pedestrian or bicyclist and weather, light and road conditions. See *Owner's Manual* for limitations.

29. Full-Speed Range Dynamic Radar Cruise Control is not a substitute for safe and attentive driving. See *Owner's Manual* for instructions and limitations.

30. Lane Departure Alert with Steering Assist is designed to read visible lane markers under certain conditions. It provides a visual/audible alert and slight steering force when lane departure is detected. It is not a collision-avoidance system or a substitute for safe and attentive driving. Effectiveness depends on many factors including road, weather and vehicle conditions. See *Owner's Manual* for limitations.

31. Automatic High Beams operate at speeds above 21 mph. See *Owner's Manual* for instruction and limitations.

32. The Lane Tracing Assist (LTA) lane centering function is designed to read visible lane markers and detect other vehicles under certain conditions. It is only operational when DRCC is engaged. See *Owner's Manual* for limitations.

33. Road Sign Assist only recognizes certain road signs. See *Owner's Manual* for limitations.

34. Proactive Driving Assist (PDA) is designed to detect certain objects or curves in the road and provide gentle braking and/or steering support. PDA is not a substitute for safe and attentive driving. System effectiveness depends on many factors, such as speed, size and position of detected

DISCLOSURES

objects and weather, light and road conditions. See *Owner's Manual* for additional limitations and details. **35.** Never tow beyond a vehicle's published towing capacities. Before towing, confirm your vehicle and trailer are compatible, hooked up and loaded properly and that you have any necessary additional equipment. The maximum you can tow depends on base curb weight plus the total weight of any cargo, occupants, and added vehicle equipment. Follow all instructions in your *Owner's Manual*. **36.** Front and Rear Parking Assist with Automatic Braking (PA w/AB) may warn drivers of, and potentially brake for front and rear collisions with certain objects when traveling at low speeds. Drivers should visually confirm clearance during use. See *Owner's Manual* for instructions and limitations. **37.** HomeLink® and the HomeLink® house icon are registered trademarks of Gentex Corporation. **38.** Charging may not be compatible with all mobile phones, smart devices, tablets, e-readers, MP3/WMA players and like products. **39.** Integrated Trailer Brake Controller is an electronic system that operates in tandem with a trailer equipped with an electric braking system. It is designed to help the driver maintain trailer control by increasing or reducing trailer braking based on trailer weight. It is not a substitute for safe towing practices. Factors including speed, weather, road conditions and driver input can all affect trailer braking control. See *Owner's Manual* for additional limitations and details. **40.** Do not exceed 120V. See *Owner's Manual* for additional limitations and details. **41.** Bilstein® is a registered trademark of ThyssenKrupp Bilstein GmbH FED REP GERMANY. **42.** Softex® is a registered trademark of Toyota Motor Sales, U.S.A., Inc. **43.** May not be compatible with all mobile phones, smart devices, tablets, e-readers, MP3/WMA players and like models. **44.** BedStep® is a registered trademark of Lund Motion Products, Inc. All rights reserved. **45.** Do not overload vehicle and properly secure roof load. See *Owner's Manual* for weight limits and restrictions. **46.** Toyota strives to build vehicles to match customer interest and thus they typically are built with popular options and option packages. Not all options/packages are available separately and some may not be available in all regions of the country. See toyota.com for information about options/packages commonly available in your area. If you would prefer a vehicle without any or with different options, contact your dealer to check for current availability or the possibility of placing a special order. Color(s) depicted may vary based on multiple factors, including ambient lighting and the format in which it is being viewed (e.g., computer, mobile device or print). **47.** An active Remote Connect trial or subscription is required to use the features mentioned in the Toyota app. **48.** Apple Music and the Apple logo are trademarks of Apple Inc., registered in the U.S. and other countries. Requires Wi-Fi Connect subscription after trial (if applicable) and your own Apple Music account. **49.** Amazon, Amazon Music, and related marks are trademarks of Amazon.com, Inc., or its affiliates. **50.** Do not rely exclusively on the Rear Cross-Traffic Alert. Visually confirm clearance during use. See *Owner's Manual* for limitations. **51.** The backup camera does not provide a comprehensive view of the rear area of the vehicle/trailer. When using straight path assist, driver should confirm clearance and is still responsible for safe operation. See *Owner's Manual* for limitations. **52.** The Panoramic View Monitor does not provide a comprehensive view of the area surrounding your vehicle. Look around to confirm clearance. See *Owner's Manual* for limitations. **53.** Auto LSD is an electronic, brake-actuated limited-slip differential that automatically activates when VSC is disengaged at low speeds. See *Owner's Manual* for limitations. **54.** Crawl Control is designed for driving on difficult terrain at low speeds and assists the driver by controlling acceleration and braking, allowing the driver to focus on steering. See *Owner's Manual* for additional limitations and details. **55.** Downhill Assist Control is designed to help driver maintain vehicle control and speed on steep, downhill descents and is not a substitute for safe driving judgment and practices. Factors including speed, grade, surface conditions and driver input can affect the DAC's ability to prevent loss of control. See *Owner's Manual* for additional limitations and details. **56.** Payload includes the weight of occupants, cargo and options and is limited by weight distribution. **57.** EPA-estimated 20 city/26 highway/23 combined mpg rating for 2024 Tacoma SR 4x2 2.4L i-FORCE automatic; EPA-estimated 19 city/24 highway/21 combined mpg rating for 2024 Tacoma SR, SR5 4x4 2.4L i-FORCE automatic; EPA-estimated 18 city/23 highway/20 combined mpg rating for 2024 Tacoma SR 4x2, TRD Sport 4x2, TRD Off-Road 4x4 2.4L i-FORCE manual; EPA-estimated 21 city/26 highway/23 combined mpg rating for 2024 Tacoma SR5 4x2 2.4L i-FORCE automatic; EPA-estimated 20 city/24 highway/22 combined mpg rating for 2024 Tacoma TRD PreRunner, TRD Sport 4x2 2.4L i-FORCE automatic; EPA-estimated 19 city/23 highway/20 combined mpg rating for 2024 Tacoma TRD Sport, TRD Off-Road 4x4 2.4L i-FORCE automatic; EPA-estimated 19 city/23 highway/21 combined mpg rating for 2024 Tacoma TRD Off-Road 4x4 2.4L i-FORCE automatic; EPA-estimated 20 city/23 highway/21 combined mpg rating for 2024 Tacoma Limited 4x4 2.4L i-FORCE automatic. Projected EPA-estimated 22 city/24 highway/23 combined mpg rating for 2024 Tacoma TRD Sport, TRD Off-Road, Trailhunter, TRD Pro 4x4 2.4L i-FORCE MAX automatic as determined by manufacturer; projected EPA-estimated 23 city/24 highway/24 combined mpg rating for 2024 Tacoma Limited 4x4 2.4L i-FORCE MAX automatic as determined by manufacturer. EPA estimates available only for models as noted at time of posting. Use for comparison purposes only. Your mileage will vary for many reasons, including your vehicle's condition and how/where you drive. See www.fueleconomy.gov. **58.** Accessory shown not designed, manufactured or evaluated by Toyota. Any damage or altered performance caused by accessory is not covered by vehicle warranty. For information on third-party warranty for accessory, see <https://arbua.com/contact-us/warranty>. **59.** Dynamic Radar Cruise Control is not a substitute for safe and attentive driving. See *Owner's Manual* for limitations. **60.** Front and rear parking assist sonar is designed to warn drivers of potential front and rear collisions with certain objects at low speeds. Drivers should visually confirm clearance during use. See *Owner's Manual* for instructions and limitations.

Toyota strives to build vehicles to match customer interest and thus they typically are built with popular options and option packages. Not all options/packages are available separately and some may not be available in all regions of the country. See toyota.com for information about options/packages commonly available in your area. If you would prefer a vehicle without any or with different options, contact your dealer to check for current availability or the possibility of placing a special order.

Color(s) depicted may vary based on multiple factors, including ambient lighting and the format in which it is being viewed (e.g., computer, mobile device or print).

Some vehicles are shown with available equipment. Seatbelts should be worn at all times. For details on vehicle specifications, standard features and available equipment in your area, contact your Toyota dealer. A vehicle with particular equipment may not be available at the dealership. Ask your Toyota dealer to help locate a specifically equipped vehicle.

Toyota Tacoma is designed to meet most off-road driving requirements. Abusive use may result in bodily harm or damage. Toyota encourages responsible operation to protect you, your vehicle and the environment. Seatbelts should be worn at all times. Please do not allow passengers to ride in the cargo area. Towing hitch receiver/ball mount kits are not intended to provide crash protection. For details on vehicle specifications, standard features and available equipment in your area, contact your Toyota dealer. A vehicle with particular equipment may not be available at the dealership. Ask your Toyota dealer to help locate a specifically equipped vehicle.

All information presented herein is based on data available at the time of posting, is subject to change without notice and pertains specifically to mainland U.S.A. vehicles only. Vehicles shown may be prototypes, shown using visual effects and/or shown with options. Actual models may vary.



Mobility

For Toyota Mobility program details, go to www.toyota.com/mobility or call the Toyota Brand Engagement Center at 1-800-331-4331