



Beautiful by Nature



NEW SKINCARE

REVIVIFY



Beautiful by Nature

CHAMOMILE & GREEN TEA

PH 5.5

SENSITIVE

SKIN SOOTHING GEL





PH 5.5 SENSITIVE SKIN SOOTHING GEL WITH CHAMOMILE & GREEN TEA



BENEFITS

Soothes the skin

Provides hydration

Relieves the skin from irritation

Strengthens skin barrier

PH 5.5 SENSITIVE SKIN SOOTHING GEL

WITH CHAMOMILE & GREEN TEA



INGREDIENTS



Bisabolol
Act as an
anti-irritant



Calendula
Checks skin
inflammation



Green Tea
Tightens pores



Squalene
Detoxifies



Chamomile
Speeds up cell
regeneration



Aloe Vera
Retains moisture

CHAMOMILE & GREEN TEA

PH 5.5
SENSITIVE
SKIN SOOTHING GEL



WHAT IS PH?

A measure of the acidity or alkalinity, usually measured on a scale of 0 to 14



eg. Lemons are high in acidity

pH 5.5 is an ideal level for healthy skin

Non-greasy | Fast absorbing | Feather light

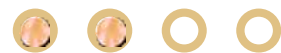
FRESH ROSE & HYALURONIC

HYDRA RESTORE MOISTURE BOOST GEL



HYDRA RESTORE MOISTURE BOOST GEL

FRESH ROSE & HYALURONIC



BENEFITS

Moisturises the skin deeply

Provides lasting hydration

Repairs damaged skin

Makes skin soft & supple

HYDRA RESTORE

MOISTURE BOOST GEL

FRESH ROSE & HYALURONIC



INGREDIENTS



Hyaluronic
Reverses
dehydration



Rose water
Prevents
water loss



Pomegranate
Improves skin
texture



Shea & Jojoba
Deeply
moisturises



Olives
Promotes cell
regeneration



Gotukola
Tightens loose
skin
& increases
collagen production



HYDRA RESTORE

MOISTURE BOOST GEL

FRESH ROSE & HYALURONIC




SELLING POINT

Why you'll love our gel?

Non-greasy | Fast absorbing | Feather light

ARBUTIN & PAPAYA ENZYMES

BLEMISH CLEARING SPOT REDUCTION CREAM





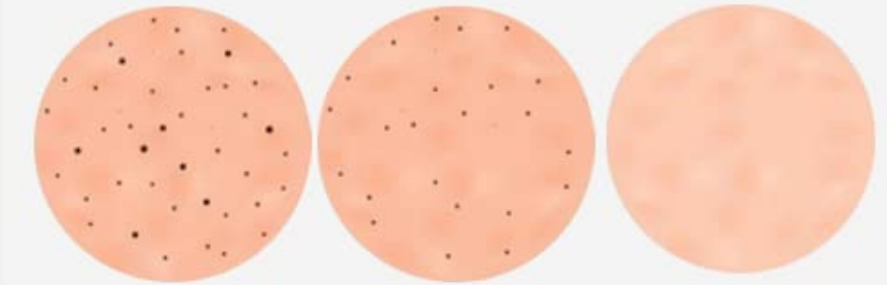
ARBUTIN & PAPAYA ENZYMES BLEMISH CLEARING SPOT REDUCTION CREAM



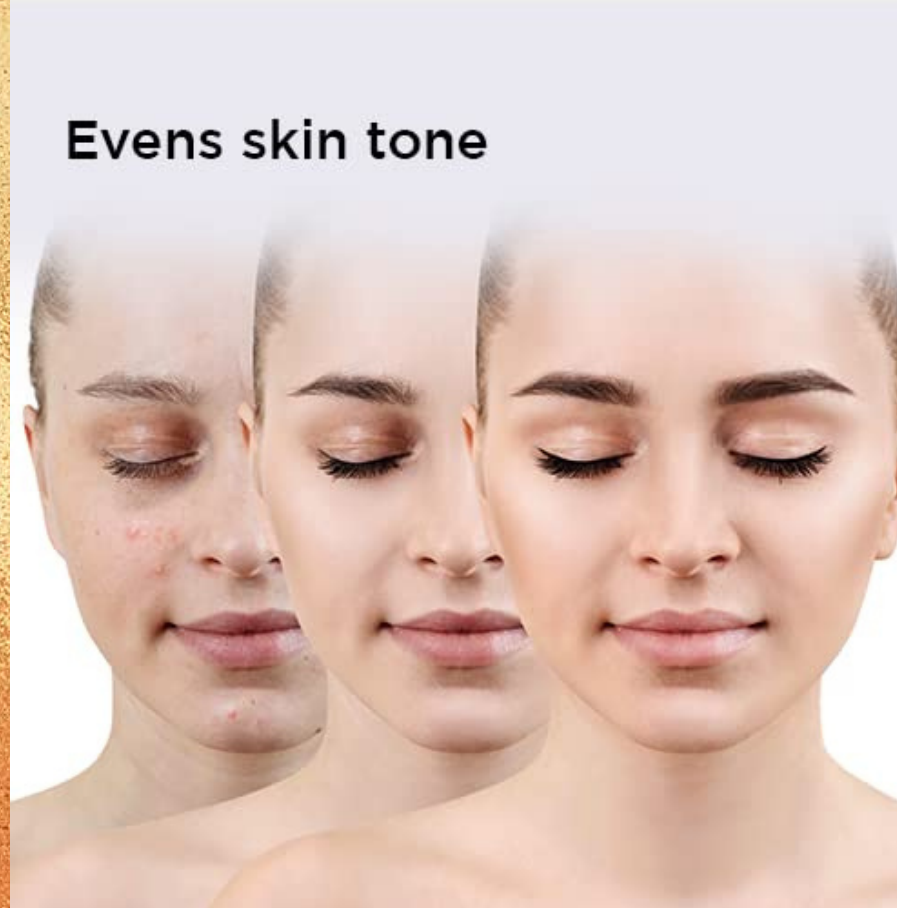
BENEFITS



Brightens the skin



Fades dark spots



Evens skin tone



Protects the skin from UV rays

ARBUTIN & PAPAYA ENZYMES

BLEMISH CLEARING SPOT REDUCTION CREAM



INGREDIENTS



Papaya
**Exfoliates
the skin**



Lemon and
Mulberry
**Fights premature
ageing**



Apple cider
vinegar
**Restores skin's
pH levels**



Tea tree oil
**Reduces itching
and irritation**



Turmeric
**Helps fight
acne**



Liquorice
and saffron
**Protects from
sun damage**

ARBUTIN & PAPAYA ENZYMES

BLEMISH CLEARING SPOT REDUCTION CREAM



WHAT IS ARBUTIN?

A substance extracted from the bearberry plant that prevents the formation of melanin, used as a skin-lightening agent.



* Enzymes are proteins which help to remove dead skin cells of the top layer of the skin

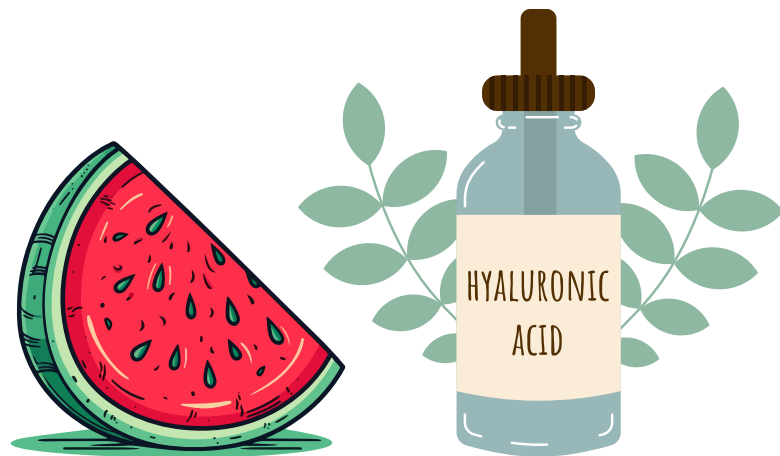
- ✓ Non-greasy
- ✓ Fast absorbing
- ✓ Feather light

HYALURONIC & WATERMELON

24H DEEP MOISTURE

HYDRATING

SERUM CREAM





HYALURONIC & WATERMELON 24H DEEP MOISTURE HYDRATING SERUM CREAM

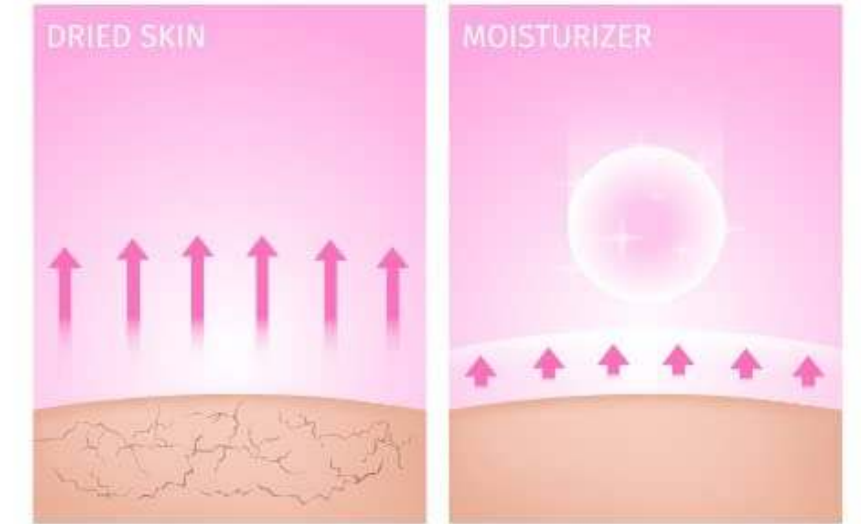


BENEFITS



Even skin tone

Revives skin texture



Prevents skin from drying



Retains a youthful look



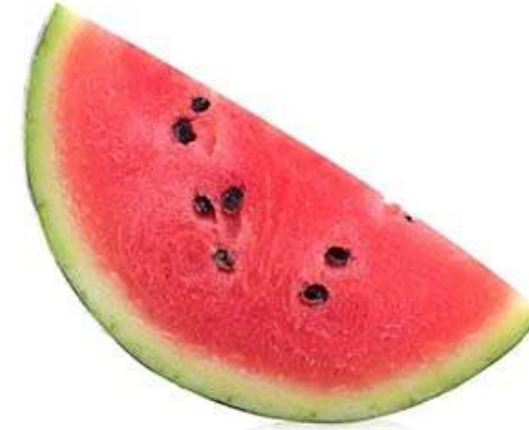


HYALURONIC & WATERMELON

24H DEEP MOISTURE HYDRATING SERUM CREAM



INGREDIENTS



Watermelon
**Boosts skin
moisture**



Pomegranate
**Reduces fine lines
and wrinkles**



Cocoa Butter
**Provides
long-lasting
hydration**



Shea Butter
**Protects from
sun damage**



Apricot
Exfoliates the skin



Jojoba esters
**Reduces skin
inflammation**



HYALURONIC & WATERMELON 24H DEEP MOISTURE HYDRATING SERUM CREAM



IMPORTANT!

WHAT IS HYALURONIC ACID?

Already naturally occurring in the body, Hyaluronic Acid attracts and holds on to moisture in skin cells, which allows skin to feel more hydrated and plump.

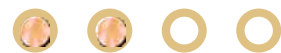
RETINOL & AVOCADO YOUTH RESTORE AGE DEFYING FIRMING CREAM





RETINOL & AVOCADO

YOUTH RESTORE AGE DEFYING FIRMING CREAM



BENEFITS



Reduces blemishes



before

after

Rejuvenates dull skin



Moisturises
& hydrates



Helps reduce
fine lines



RETINOL & AVOCADO

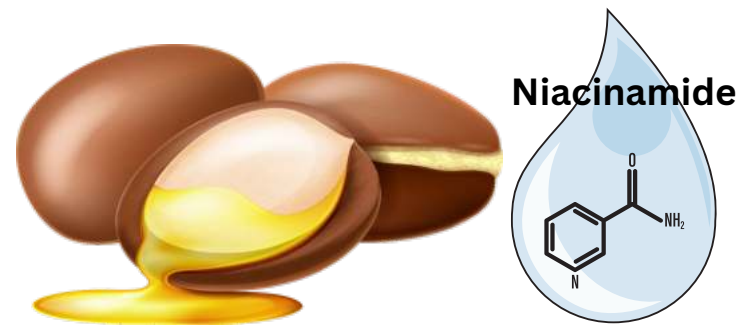
YOUTH RESTORE AGE DEFYING FIRMING CREAM



INGREDIENTS

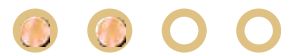
 <p>Squalene & Retinol Fights premature ageing</p>	 <p>Avocado Heals chapped skin</p>	 <p>Argan Maintains even skin tone</p>
 <p>Rosehip Helps exfoliate</p>	 <p>Jojoba & Olives Soothes skin</p>	 <p>Ceramides Retains moisture</p>

NIACINAMIDE & ARGAN HYDRA PROTECT DAY CREAM SPF 25





NIACINAMIDE & ARGAN HYDRA PROTECT DAY CREAM SPF 25



BENEFITS



Repairs dull skin

Provides hydration



before

after

Nourishes & plumps skin



Reduces early signs of ageing





NIACINAMIDE & ARGAN **HYDRA PROTECT** DAY CREAM SPF 25



INGREDIENTS



Aloe
Retains moisture



Ginseng
Helps reduce fine lines



Wheatgerm
Controls excess oil



Grapeseed
Protects from sunburn



Apricot
Retains elasticity



Sunflower & Raspberry seed
unclogs pores & promotes collagen production



NIACINAMIDE & ARGAN HYDRA PROTECT DAY CREAM SPF 25



ADDITIONAL NOTE



- ✓ Non-greasy
- ✓ Fast absorbing
- ✓ Feather light

COLLAGEN & JOJOBA NUTRITION SURGE REGENERATING NIGHT CREAM





COLLAGEN & JOJOBA NUTRITION SURGE REGENERATING NIGHT CREAM



BENEFITS



Regenerates and renews tired skin overnight



Improves skin's firmness



Evens skin tone



Fights premature ageing



COLLAGEN & JOJOBA
NUTRITION SURGE
REGENERATING
NIGHT CREAM



INGREDIENTS

 <p>Jojoba Retains moisture</p>	 <p>Sea buckthorn Protects from sun damage</p>	 <p>Gotu kola Minimizes dark spots and fine lines</p>
 <p>Olive Soothes skin</p>	 <p>Acai berry Hydrates the skin</p>	 <p>Shea butter Maintains elasticity of the skin</p>



COLLAGEN & JOJOBA NUTRITION SURGE REGENERATING NIGHT CREAM



ADDITIONAL NOTE



- ✔ Non-greasy
- ✔ Fast absorbing
- ✔ Feather light

VITAMIN C + CARROT SEED BRIGHT RADIANCE GLOW BOOSTING CREAM





VITAMIN C + CARROT SEED BRIGHT RADIANCE GLOW BOOSTING CREAM



BENEFITS

Improves skin tone

Fades pigmentation

Treats skin for improved tone and clarity

Soothes skin



VITAMIN C + CARROT SEED BRIGHT RADIANCE GLOW BOOSTING CREAM



INGREDIENTS



Carrot Seed
**Improves
complexion**



Yogurt
Fights blemishes



Grapeseed
Brightens



Licorice
Lightens dark spots



Cucumber
Rejuvenates



VITAMIN C + CARROT SEED BRIGHT RADIANCE GLOW BOOSTING CREAM



ADDITIONAL



- ✓ Non-greasy
- ✓ Fast absorbing
- ✓ Feather light



Beautiful by Nature

Thank You!

