



eye

INTEGRATED VIDEO SECURITY
E-VISION PROJECT DEVELOPMENT CORPORATION

SOMETHING ABOUT OUR COMPANY

E-VISION PROJECT DEVELOPMENT CORPORATION

Our company was founded on and continues to operate under the principles of honesty, integrity, excellence, professionalism, quality and development of creative solutions.

The combined knowledge of our skilled integrators and E-Vision's dedicated and well-trained Expert Service engineers ensure successful and effective video security installations.

- Security Planning and Design
- Hardware Installation Planning & Procurement
- Vulnerability Assessment
- Full infrastructure Design
- Project Plan Development
- Quality Enhancements and Support
- Internet Service Provider Reseller
- Telecommunication Reseller
- Managed IT Support

1

EMPLOYS CERTIFIED AXIS SECURITY PROFESSIONAL
VETERAN FRIENDLY COMPANY

2

CERTIFIED MINORITY BUSINESS ENTERPRISE
CERTIFIED SOUTH CAROLINA AND TEXAS DEPARTMENT OF TRANSPORTATION
CERTIFIED WOMEN-OWNED BUSINESS –WOMEN'S BUSINESS ENTERPRISE
COUNCIL.

3

CERTIFIED MINORITY BUSINESS –SOUTH CAROLINA GOVERNOR'S OFFICE OF
MINORITY AFFAIRS

4

2,000,000 ERRORS & OMISSIONS INSURANCE
1,000,000 GENERAL LIABILITY INSURANCE

SOUTH CAROLINA RETAIL LICENSE
AUTHORIZED CHANNEL PARTNER OF AXIS COMMUNICATION
AUTHORIZED CHANNEL PARTNER OF SPECTRUM BUSINESS
AUTHORIZED CHANNEL PARTNER OF COMPU COM
AUTHORIZED CHANNEL PARTNER OF RINGCENTRAL COMMUNICATIONS



EYE SERVICES

Integrated Network Security Surveillance



**Hardware Installation
Planning & Procurement**



**Security
and Vulnerability Assessments**



**Project Planning and
Consulting**

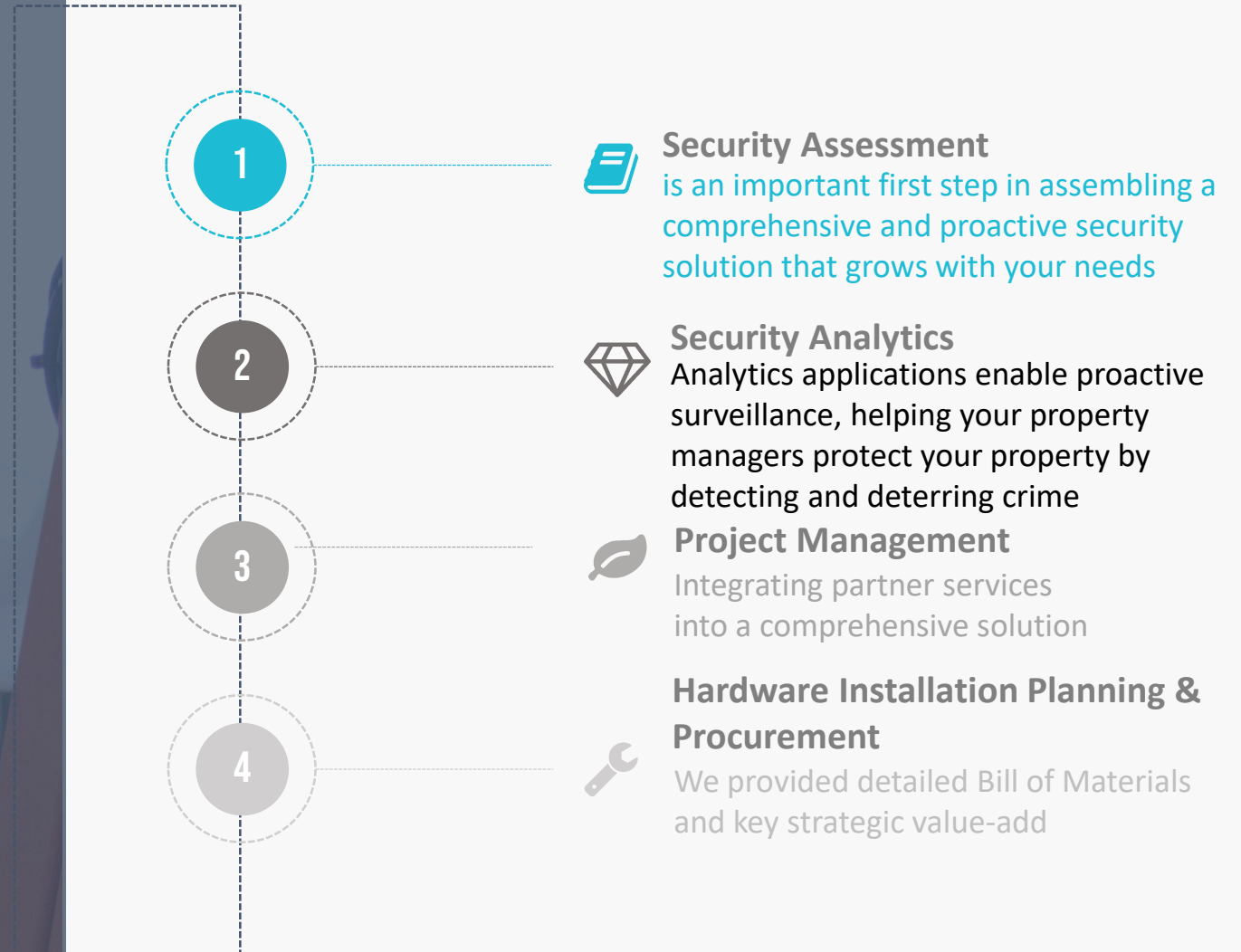
E-Vision security team will manage, build, and support your network video through assessment, design, and implementation.

- Security Planning and Design
- Hardware Installation Planning & Procurement
- Vulnerability Assessment
- Full infrastructure Design
- Project Plan Development
- Quality Enhancements and Support
- Internet Service Provider Reseller



OUR VISION

Eye deploys a risk-based, Multi-Layered Approach to network security surveillance solution.



EYE TOWERS

Our NEW Custom Product Models



- 01. EYE TOWER STEEL POLE 24FT OR 40FT POE**
Power-Over-Ethernet Protocol Connection with IP PTZ Camera
Wireless Network Connectivity .
- 02. EYE TOWER STEEL POLE 24FT OR 40FT ELECTRICAL**
Powered by existing electrical connection at location. Will require
electrical contractor for installation. Wireless network connectivity
for additional EYE Towers at location
- 03. EYE TOWER STEEL 24FT OR 40FT SOLAR POWER**
Solar Powered EYE Tower with IP PTZ Camera, Solar Power
12/24/48V options.
- 04. EYE TOWER STEEL 24FT OR 40FT ELECTRICAL STATION**
Electrical Station with option power connections for locations with
physical building. The station will be equipped with IP PTZ Cameras,
Video Recorder and Wireless Bridge to connect with additional EYE
Towers or WIFI Hotspot options.
- 05. EYE TOWER STEEL 24FT OR 40FT MOBILE**
The mobile tower will deploy cellular broadband connectivity
connected to EYE Watch application. All EYE Power Options
available.

EY TOWER FEATUES: PTZ Cameras (WIDE Dynamic range,, Electronic Image Stabilization (EIS) Extreme Temperatures to -50C (58F) Zip Stream Technology, Laser Focus and Built-IR

OUR HARD WORKING TEAM



E-Vision Project Development Corporation was founded on and continues to operate under the principles of honesty, integrity, excellence, professionalism, and creative solutions. We are committed to operating as a sustainable business, to providing innovative services.

MEET EYE MANAGER

E-VISIONEYE DIVISION LEADER

DIVISION LEADER/COO

**JOHN
BRYANT**

ABOUT

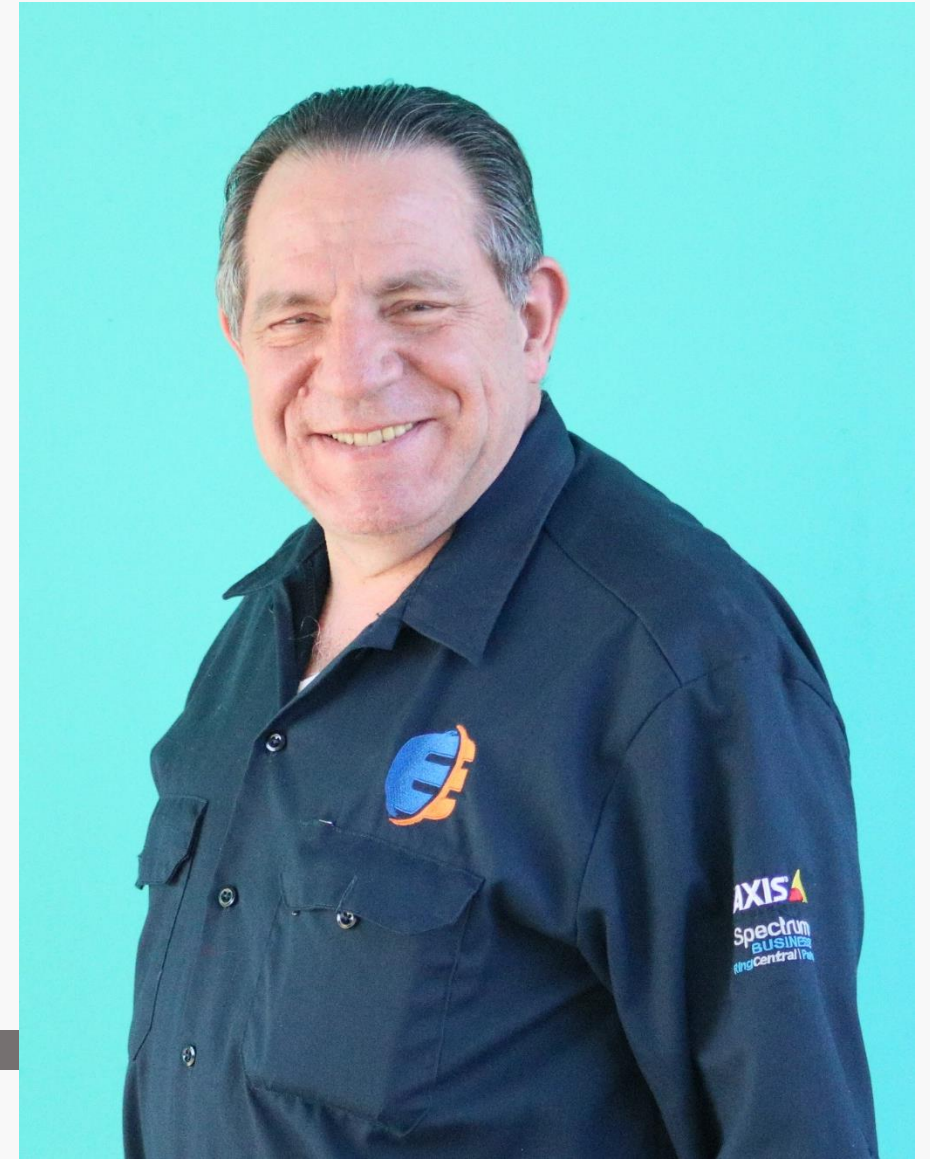
25 Years Project Management Experience

Former Network Systems Analysis - DynCorp International
Former Project Manager- U.S. Army Contracting Command, GSA and Catapit Technology Ltd

18 Years Law Enforcement Experience

Major- US. Army - Military Police Branch 1977-1995

SKILLS



Email- JACK@EVISIONCENTER.COM.



MEET THE CEO

SIMONE WHITESIDE

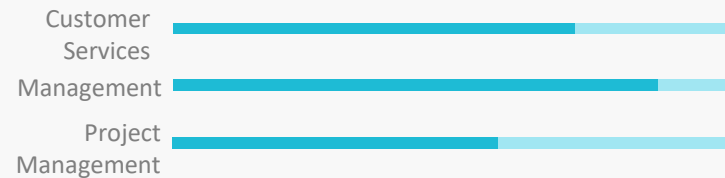
ABOUT ME

Company Co-Founder & Owner

*15 Years of Admin
Manager with Lowes
Corporation*



MY SKILLS



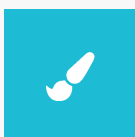
EYE PROJECT TEAM

THINKING OUTSIDE THE BOX

CHIEF OPERATING OFFICER

JOHN BRYANT

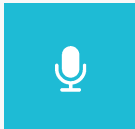
Major, U.S. Army Retired
Military Police Commander



ASSOCIATE PROJECT MANAGER

JUAN GARCIA

Palmetto Leadership Institute
Alumni



SENIOR PROJECT DIRECTOR

ERIC WHITESIDE

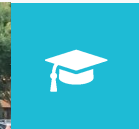
Company Founder and AXIS
Certified Professional



CHIEF EXECUTIVE OFFICER

SIMONE WHITESIDE

Co-Founder



BUSINESS DEVELOPMENT

ELTON THOMAS

Captain, U.S. Army Veteran

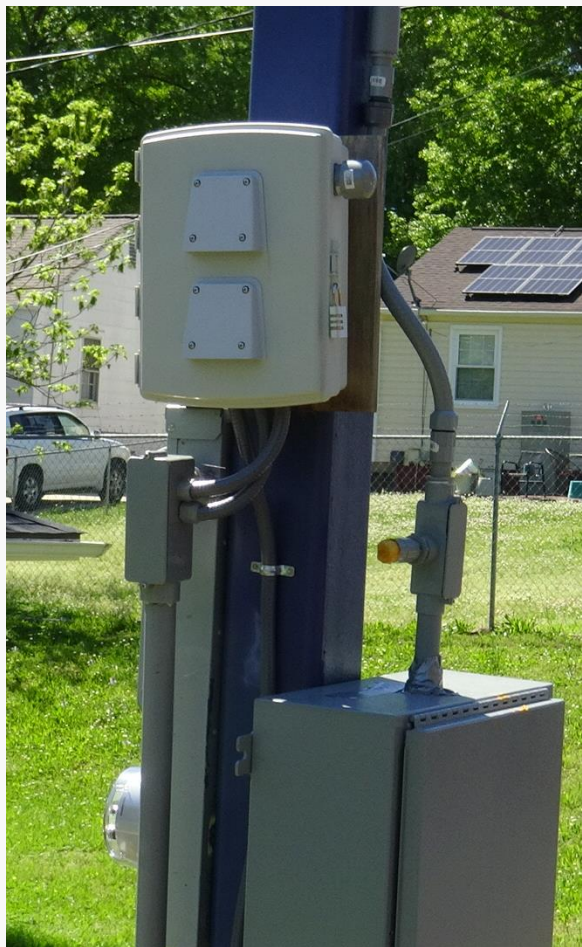
OUR COMPANY PORTFOLIO



Our company with one man with a vision of empowering the next generation of technology experts. The demand for our services quickly increased, and within a few years, we had hired our first employees. By the end of our first year, we had doubled our staff of young tech entrepreneurs and we started to provide full-service IT and digital media services. And now our company was offering complete information management.

EYE STATION

EYE TOWER ELECTRICAL STATION



EYE TOWER Electrical Substation is located in Outdoor that's means there will be no roof top.



Always less quantity of building or infrastructure is needed. All equipment can be viewed and it can help to find the fault location easier.



Adequate space between two separate adjoining equipment can be provided which can reduce the possibility of any kind of fault.

EYE TOWER

POWER-OVER ETHERNET (POE) LOW POWER MODEL

Delivery of data AND power over one Cat5e/Cat6 Ethernet cable. PoE ends the need for AC/DC power supplies and outlets. A remote installation costs less than fiber as no electrician is required. Ethernet cable costs less and is often already installed buildings.



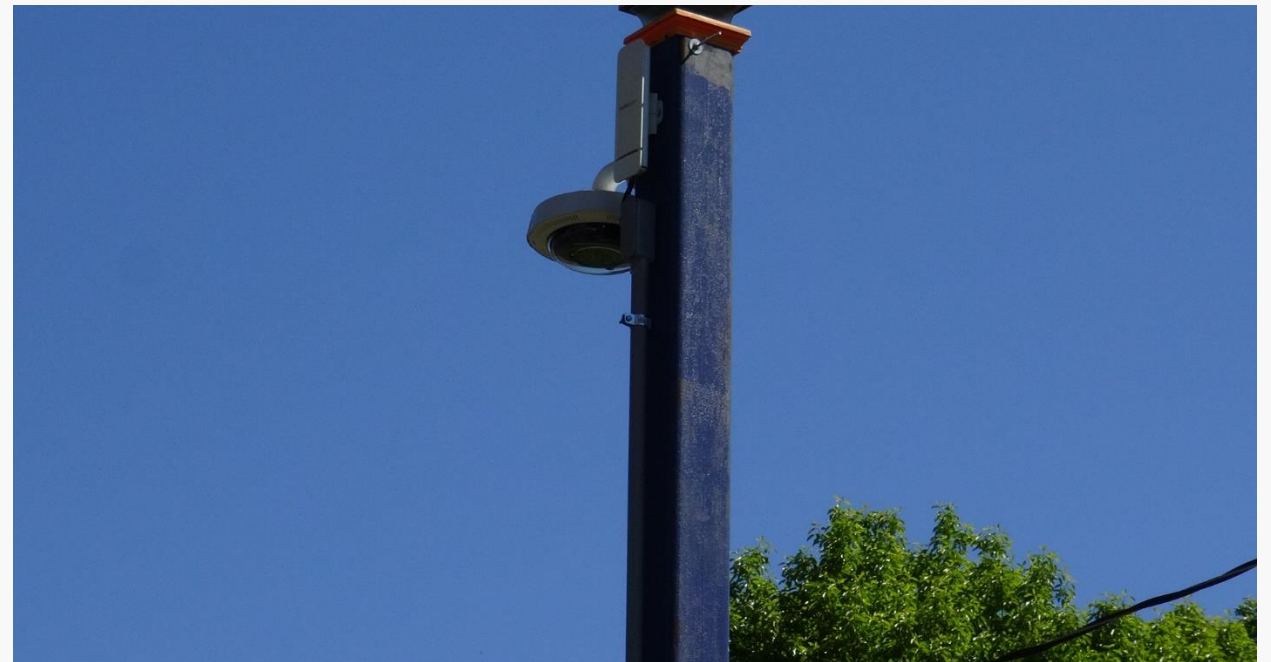
CENTRALIZED POWER SUPPLY MANAGEMENT

Centralized power supply management is the another huge advantage which PoE can offer. In a conventional scenario, If system doesn't use the UPS (uninterrupted power supply), a power outage will turn off your whole video surveillance system. For ensuring the properly working of your video surveillance system, UPS is the critical device.



FLEXIBILITY

PoE enables user to setup a clean network system fast, since it eliminates the man unnecessary electrical components, which in turn, significantly reduced the installation budgets and maintenance fee.



EYE TOWER

SOLAR- POWER MODEL

4G solar security cameras are able to store all their video recordings into a cloud-based surveillance video storage system from anywhere that has 4G connectivity.



KEY BENEFITS

Wire-free solution.
Built-in battery charger.
Scalable solution that can be easily adjusted to meet your future needs – can add as many solar panels as cameras.
Environmentally friendly.



FLEXIBILITY

Construction sites, large national parks, farms, and properties located in remote or distant areas all have unique difficulties when it comes to surveillance and security. Monitoring large outdoor areas or remote locations is commonly a challenging problem that solar panel security cameras are ideally designed to overcome.



EYE SITE PHOTO

NHE- LIBERTY SQUARE PROJECT



INSTALLATION SERVICES:

- EYE TOWER –POE 24FT
- EYE TOWER- SOLAR POWER 40FT
- IP NETWORK SURVEILLANCE CAMERA- LANDRY ROOM



STRATEGIC PARTNERS

EYE integrated solution seeks to effectively utilized internet, landscaping and surveillance equipment working in collaboration to achieve security objectives.



SECURE LANDSCAPING

Utilization and Deployment of Landscaping Techniques that secure and enhance your property

TREE REMOVAL AND STRATEGIC

TRIMMING

INCREASE VISIBILITY AND EFFECTIVENESS OF SURVEILLANCE CAMERAS.

LANDSCAPING SECURITY ASSESSMENT

EYE PARTNERS VIEW LANDSCAPING THROUGH THE A VISION FOR FORESEEABLE CRIME TECHNIQUES TO UTILIZE LANDSCAPING AS A LAYER OF SECURITY

PROVIDE DIRECTION FOR SAFE PEDESTRIAN FLOW

Properly designed landscapes perform this function while allowing clear lines of vision necessary for safe and efficient traffic and pedestrian movement

LANDSCAPING ARCHITECTURE

Physical and Psychological security Utilizing plants to create wall cover and is ideal for use against perimeter walls,

ENHANCE LIGHTING

Good outdoor lighting accents design elements and focal points in the landscape but it is also functional, lighting paths and walkways and entrances.



OUR COMMERCIAL PARTNERS

A healthy, well-groomed lawn is important to your business image and important to your bottom line.

LAWN MAINTENANCE

Disease Control | Aeration | Fertilization | Weed Control

SHRUB & TREE CARE

Disease Control | Insect Control | Fertilization

SPECIALIZED SERVICES

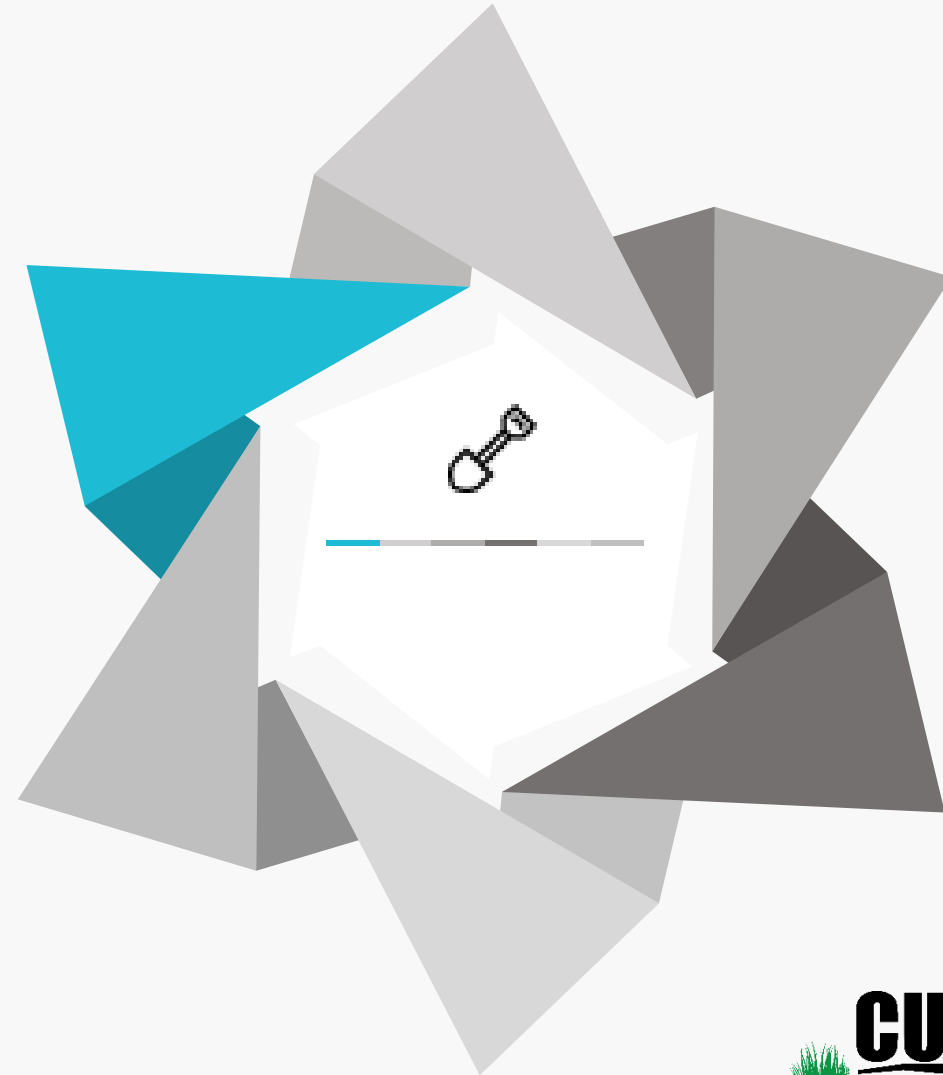
Geese Repellent | Fire Ant Control | Mosquito Control



MULTI-FAMILY LIVING

Picking Up The Shovel Is On Us.

- 01. Full Grounds Maintenance Solutions**
- 02. Complete Lawn Maintenance Service**
- 03. Shrub & Tree Care**
- 04. Professional Landscape Installations & Design**
- 05. Security Landscape Lighting Assessments**



NHE PROPERTIES



A wonderful serenity has taken possession of my entire soul, like these sweet mornings of spring which I enjoy with my whole heart. am alone, and feel the charm of existence in the lorem ipsum.



SECURITY CONCERNS

Using Area of Interest (AOI) methodology

- How do I ensure staff and resident safety?
- How do I minimize vandalism and costly repairs?
- How can I easily investigate incidents and identify suspects?
- How can I deter violence and theft?



SECURITY CHALLENGES

Using Area of Interest (AOI) methodology

- How can I maximize my limited security budget?
- How can I get an integrated security solution?
- How do security and IT teams get on the same page? Which products and solutions are best for my property owners?



**We integrated multi-family safety solutions -
video - access control - audio**

SECURING AREAS OF INTEREST

MULTI-FAMILY PROPERTIES

- MAIN OFFICE-ACTIVITIES BUILDING
- RESIDENTIAL ENTRANCES
- RESIDENTIAL BACK PORCHES
- PROPERTY MAINTENANCE/STORAGE AREAS
- RESIDENTIAL GARBAGE AREAS

TRANSFORMING RISKS TO SOLUTIONS

DEFINE THE AOI'S
AND ASSOCIATED
RISKS



DEFINE SECURITY
OBJECTIVES FOR
EACH AOI



POPULATE
A SECURITY
MATRIX FROM
OBJECTIVES



SELECTION OF
COMPONENTS
BASED ON
MATRIX



RISK

MULTI-FAMILY PROPERTIES

- Residential Home Entrance
- Residential Back Porch/Area
- Property Entrances
- Active threat after hours
- Vandalism, breaking & entering after hours
- Loitering
- Main Office : Property Manager
- Residential Hallways between unit

- Trespassing of unknown individuals
- Accidents involving motorists and pedestrians
- Act of aggression
- Criminal Participant Exits from Property
- Aggression towards staff
- Theft of property

SOLUTION COMPONENTS

- License plate recognition
- Wide area coverage
- Adaptation to lighting
- Secure Landscaping Strategy
- Loitering detection
- Video motion detection
- Visitor entry management
- Corridor coverage



EYE ANALYTICS

SMART SURVEILLANCE

IDENTIFY VEHICLES

WIDE COVERAGE

SMART LIGHTING

LICENSE PLATE RECOGNITION (LRP)

- ✓ >High resolution cameras to capture
- ✓ license plate details
- ✓ >Axis partner analytics with event notification
- ✓ –Embedded or server-based

WIDE AREA COVERAGE

360° panoramic coverage
180°/360° multi-sensor coverage

ADAPTION TO LIGHTING CONDITION

- ✓ >Light finder low light technology
- ✓ >Wide Dynamic Range (WDR) backlight
- ✓ compensation technology
- ✓ >IR/white light illumination for total darkness

AMELIA VILLAGE APARTMENTS



AREAS OF INTEREST (AOI)	RISKS	SOLUTION
Perimeter	Unwanted Visitors	Perimeter Defense
Main Office	Breaking and Entering	Lighting Adaptation
Entrances	Trespassing	Entry Management
Back Porches	Criminal Activity	Wide Area Coverage
Storage Buildings	Theft	Video Motion Detection
Residential Areas	Acts of Aggression	Secure Landscape Solution
Parking Lot	Loitering	License Plate Recognition

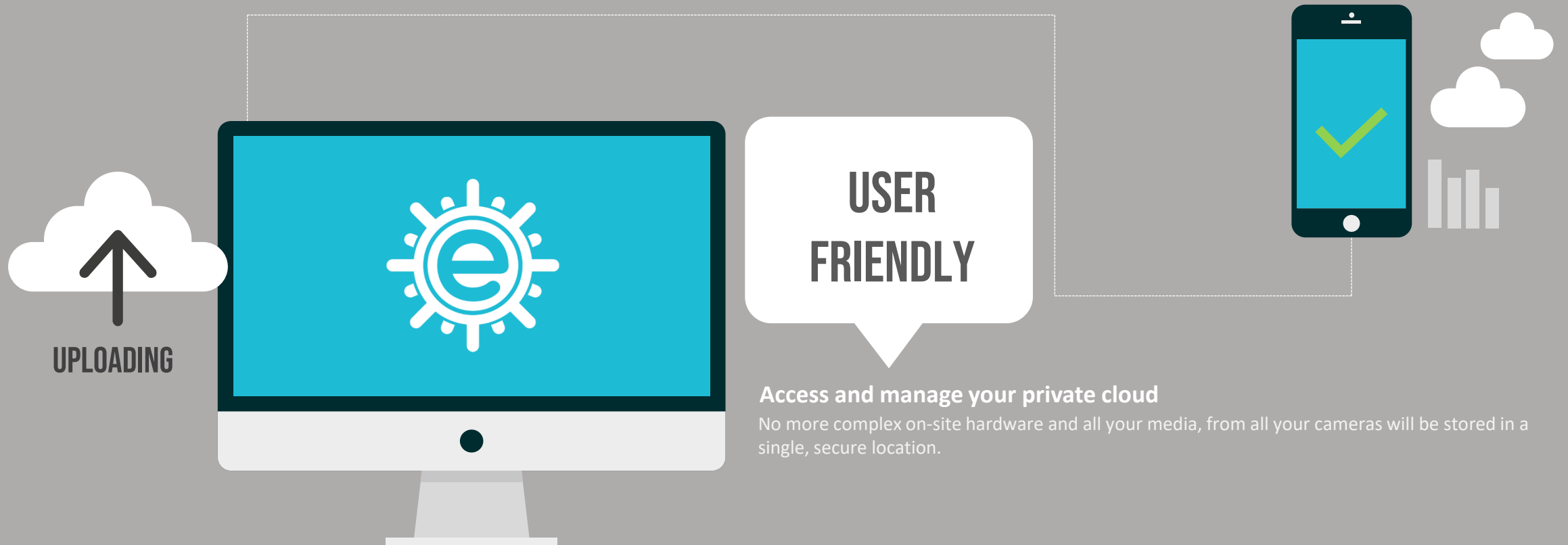
LIBERTY SQUARE APARTMENTS



AREAS OF INTEREST (AOI)	RISKS	SOLUTION
Perimeter	Unwanted Visitors	Perimeter Defense
Main Office	Breaking and Entering	Lighting Adaptation
Entrances	Trespassing	Entry Management
Back Porches	Criminal Activity	Wide Area Coverage
Storage Buildings	Theft	Video Motion Detection
Residential Areas	Acts of Aggression	Secure Landscape Solution
Parking Lot	Loitering	License Plate Recognition

EYE MOBILE

Camera Health Check and motion alerts are centrally managed and sent to your mobile device or email.

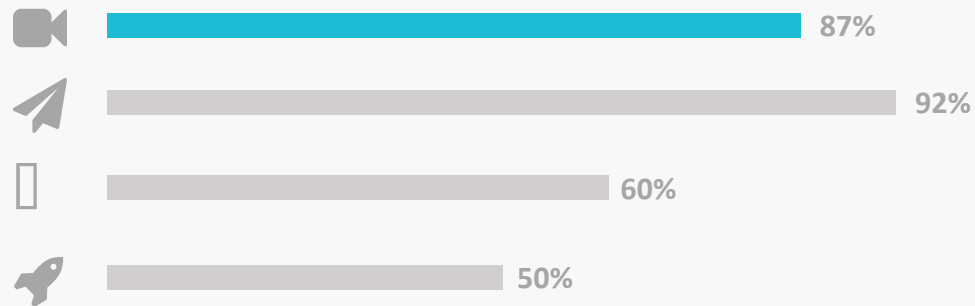
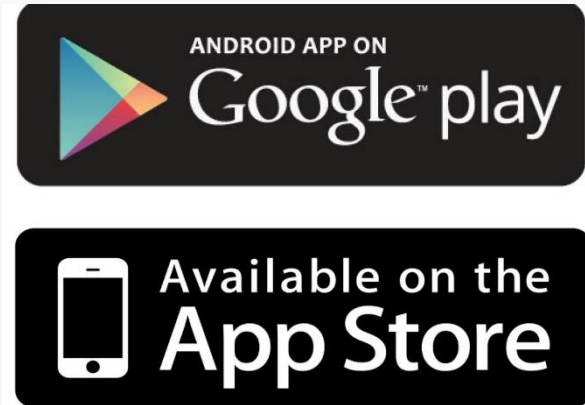


EYE WATCH MOBILE APPLICATION

No more complex on-site hardware and all your media, from all your cameras will be stored in a single, secure location.

STAY ON TOP

Take advantage of our advanced cloud notification system that will work across all connected cameras.



- 1 Reliable, cost-effective cloud video surveillance applications.
- 2 Easily manage a large number of cameras, users and physical locations.
- 3 EYE WATCH multi-user feature allows for unlimited users
- 4 Let EYE WATCH tell you when there's a problem with one of your cameras.
- 5 Camera Health Check and motion alerts are centrally managed and sent to your mobile device or email.

E-VISION PROJECT DEVELOPMENT CORPORATION



Our Strengths

We put our services to work in the areas you need it. Nothing more, nothing less.

Our Values

Our proposals and designs are aimed to improve our clients property value, management and create strong relationships.

Our Core

Business ready craftsmanship and client education importance.

- Clarifying process explanations and updates
- Strict project instruction and direction
- Punctuality, quality, and impeccable communication is our taste.

Our Philosophy

Cutrite was founded under the principles of honesty, integrity, excellence, and professionalism. We are committed to operating as a sustainable business, to providing innovative services.



LICENSED



INSURED



BONDED

Our Strengths

Creating a more sustainable world begins with design. That's why sustainability is one of our key drivers when developing new network video products and solutions.

Our Values

We are committed to conducting business in an honest, fair and transparent way. In addition to being signatories of the UN Global Compact, we have our own Code of Conduct to ensure rules are followed.

Our Core

As a company that exports globally, we have to be vigilant about corruption. Our stance on this is clear: we do not tolerate any form of bribery or corruption. This is reinforced by our anti-corruption policy, our educational program for all employees and our Standard Distributor Agreement.

Our Philosophy

Axis customers can be assured they're getting the very best quality in everything, from start to finish – from the latest technology, to the most committed customer service. And, that's the Axis difference.



**2019 SIA NEW PRODUCT
SHOWCASE MERIT AWARD**



EST. 1984



PART OF CANON GROUP

Our Strengths

Our commitment to serving customers and exceeding their expectations is the bedrock of Charter's business strategy and it's the philosophy that guides our 94,000 employees.

Our Values

Superior, reliable, consistent services that deliver value – that's our focus.

Our Core

Over the years, Charter has invested billions of dollars in infrastructure improvements, unleashing the power of an advanced, two-way, fully interactive fiber network. By moving to this all-digital network, today's Charter customers enjoy the most HD TV channels, more On Demand choices and the fastest internet speeds.

Our Philosophy

"We, at our core, are a service organization. And every product we sell has a huge service component."

--Tom Rutledge, President & CEO



Spectrum

BUSINESS



99.9% RELIABILITY



FASTEST INTERNET SERVICE



U.S. BASED SUPPORT TEAM



CONTACT US

Our Goals. For You.

ADDRESS:

2040B South Church St Ext
Spartanburg SC 29302

Email:
accounts@evisioncorp.com

Office: (864) 968-1972

Website:
www.evisioneye.com

DUNS #054708496