



9006 DUNMORE LANE

3 bd 2 F bath 1 H Bath

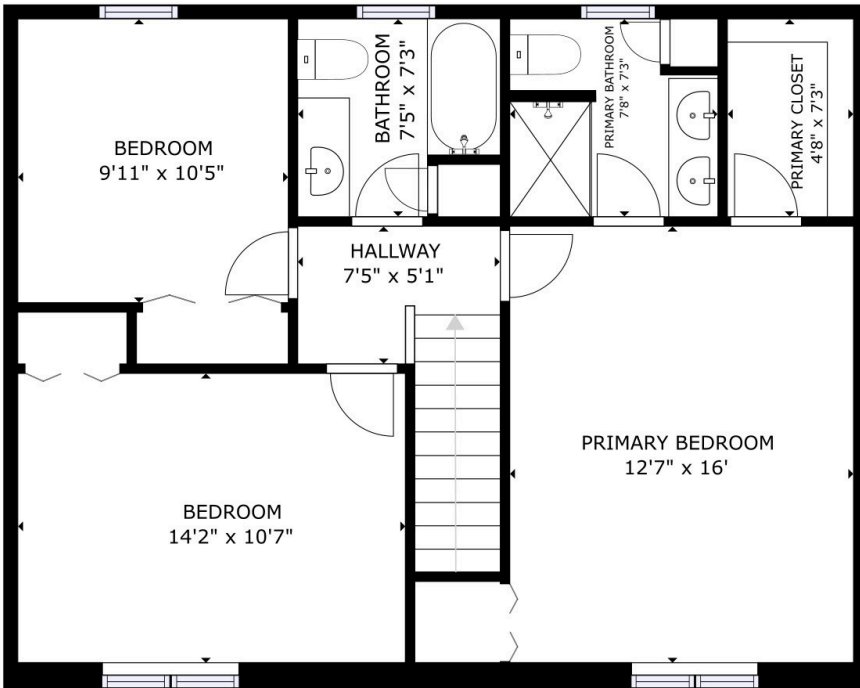
GROSS INTERNAL AREA

FLOOR 1: 948 sq ft, FLOOR 2: 733 sq ft
EXCLUDED AREAS; GARAGE: 497 sq ft, PORCH: 76 sq ft

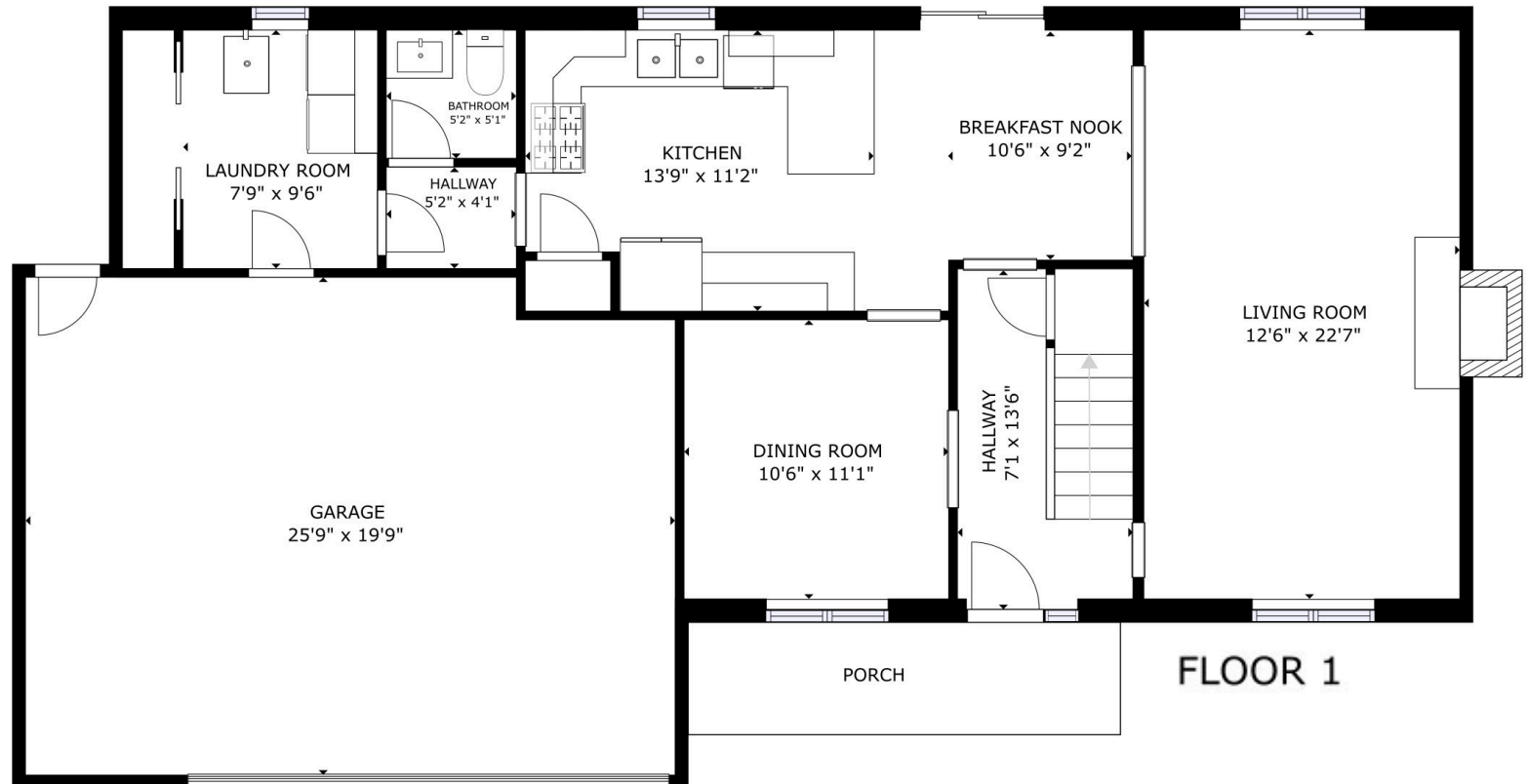
TOTAL: 1681 sq ft

SIZES AND DIMENSIONS ARE APPROXIMATE, ACTUAL MAY VARY.

Brokered by GOLD HOUSE LLC



FLOOR 2



FLOOR 1