

# THE CANAAN KIBITZER

Volume 48, Issue 2

Spring 2012



# Heidi

Ch. Pleasant Hill  
Hinda M. Rosendog CD

She didn't like Hinda  
She didn't like Margie  
and that 'M'  
She thought Heidi was just fine  
So that was her call name

Her eyes told all.  
And the small lift of her lip  
to indicate a hint 'o trouble  
Just A Hint!  
It usually took no more than that.  
The Queen was in her castle  
And all her subjects were only  
too happy to oblige.

Dog Royaty flocked to Heidi.  
She had them under her spell.  
Amanda Pough had a nice life  
with Border Terriers,  
fer gawd sakes!  
Now Look What's Happened!  
The Eyes.  
It was those Deep Piercing  
Heidi Eyes.

As Bryna Comsky  
so eloquently put it,  
Heidi's Second Legacy  
...and contribution  
to the breed,  
She had some Fine Pups  
that Heidi.

Donna Dodson, Heidi's breeder,  
recalled that Heidi was always  
a Good Girl.

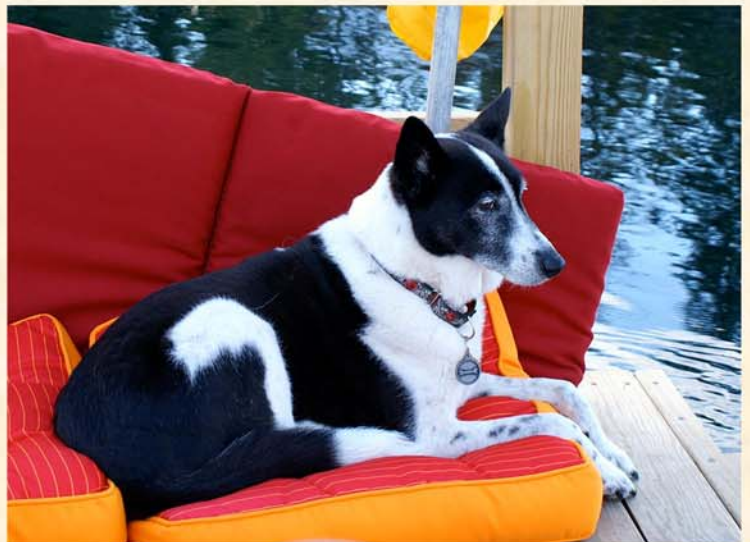
East Coast AKC Representative,  
Patti Proctor noted Heidi's loss  
would affect the whole of dogdom.

As though she would be here  
forever,  
Heidi seemed timeless and  
eternal.

On her last day, she looked  
at me as if to say - -

I had a wonderful life  
My kingdom is in good hands  
All will be well.  
Don't Muck It Up  
You Canaan Dog People !

A Special Bitch  
Heidi Rosendog  
R .I. P.



# THE CANAAN KIBITZER

VOLUME 48, ISSUE 2      SPRING 2012

## PRESIDENT & EDITOR'S MESSAGE

*It's May!  
... That lovely month when ev'ryone goes  
Blissfully astray.*

It is the weather that has gone astray around here; 80 degree temps in March, our biggest snowfall this year in April (a wet, heavy snow that brought down large limbs) and hail in May all have made the whole spring astray!

Inside this issue you will find the AKC approval to the changes the club approved to our standard and a copy of the new standard for your reference. Also, the most up to date information about the July National Specialty and Meetings. The committee has made an effort to include multiple educational components to this National (in response to member requests) and they are open to all. From puppy raising to CDs of the past and present, this Specialty is a destination event. If you get a hard copy of the Kib, you will find inserts with Banquet, Herding and Advertising information. If you get the e-version, make sure you find the links on the CDCA website.

Please make sure to read the shaded boxes carefully—they indicate club business, information and committee reports. Often times they contain a call for member participation. While the CDCA Board of Directors is quite talented (if I do say so myself), I don't believe any of us have mastered reading minds. If you have an idea, a concern, a flash of brilliance or just need a sounding board, please communicate with us! We serve the club based on what we are told. Without your voices, we can only go where we believe we should.

Finally, as you will see in the Sunshine Reports, we have had a very surgical spring among our members! To those who have had surgery, illness or just a tough time, our thoughts are with you. Pat your Canaan Dogs and let them be a living hot water bottle. I know it always makes me feel better—and hope it will do the same for you.

- Amanda

## LETTERS TO THE EDITOR

Beautiful, tasteful issue of the Kibitzer. Thank you.  
- Bryna Comsky

Lovely newsletter! Interesting articles and lots of great photos!  
-Jennie Larkin



*And the winner is ...*

**It's Official! Kib receives  
Dog Writers Association of America  
Nomination!**



<http://www.dwaa.org/writing-category-nominees-regular-2011.php>

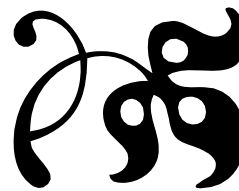
We didn't win our category, but it truly was an honor to be nominated. Thanks again to everyone who contributes to the "Kib." Your club, your newsletter—and you make it special!

- Amanda



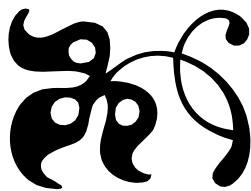
## REMEMBERING .... DR ERNEST GRAY

SUBMITTED BY: BRYNA COMSKY



*The photo of Dr. Gray did not arrive in time for the Winter issue. Our thanks to his family for sharing their favorite photo with us.*





## REMEMBERING ... LORRAINE STEPHENS

COMPILED BY: BRYNA COMSKY

*Lorraine Stephens held almost every position in the CCA (Canaan Club of America, precursor of the CDCA). Her son Eric informed of us her recent passing. Bryna Comsky has collected memories of Lorraine and her dogs.*

We are honored you are choosing to remember those who have gone before and laid the foundation for many others.

- Eric Stephens (Lorraine's son)

When it comes to the functioning of clubs, some things never change and so it was in the early days of the Canaan

Club of America (now the Canaan Dog Club of America) when we note that just a few people do all of the work and looking back at Lorraine we see her wearing many different hats simultaneously. And I might say she wore them very well, functioning as CCA Secretary, Kibitzer Editor, breeder, Specialty chair and showing her own dogs.

I remember Lorraine with her lovely smile on her peaches and cream complexion trying to keep it all together with a sometimes not too cooperative membership. Now please remember that the Secretary's task in those 70's and 80's was sans computers and all communication was typed and sent USPO, a very challenging job when

there were delays in responses to communiqués, especially during officer elections. I wonder how many dollars in phone calls she spent out of her pocket and the number of hours of family time she relinquished trying to get communiqués returned in a timely fashion.

But Lorraine was a giver of her time and talent. When the pastor/Canaan Dog breeder she worked with as secretary decided to leave his kennel, Lorraine and her husband and family took over the care of those dogs many of which were used in breeding programs and are seen in pedigrees of Canaan Dogs today.

Unfortunately, when diverse principles of breeding caused a split in the club, Lorraine determined that was not what she wanted to be involved with and we lost a good lady to the breed. Lady, yes, I will always remember Lorraine as a genuine lady. At times we forget that we wouldn't be where we are today without the strong leaders of the past

Lorraine Stephens had many hobbies. Late in her life writing/publishing and quilting took over after her husband Gene passed away. One of these hobbies became a crusade for my mother, Canaan dogs.

In 1973, Ari Ben Canaan became our first Canaan dog. He would not be anywhere near our last. He was a pet quality dog we got from Father Robinett. Mom was quick to get involved in the breed and dog training. Many more dogs were to follow. At the height of our kennel Geva Canaan Dogs, I remember having two litters of puppies, just a few weeks apart. It was a busy time. All this work was toward getting the breed AKC recognized.

My mother traveled to many shows and even to Mexico City with Padre's Obediah of Geva. Father Robinett gave me Obi, as we called him, so I could participate in 4H. Obi was a rare brown colored Canaan and was very desirable as stud. Brown was a rare color in those days. And he was our signature dog.

My mother served in my roles in the early Canaan Club of America. She was an officer for more years than I can remember. She had many friends in the club. I know many people in the club today never knew my mother. But if you would have ever met her you would not have forgotten her, nor her you. Her dedication to the breed helped greatly in getting Canaan's recognized. The pavers you walk on to enter the Canaan Club of today, my mother helped to lay. One of her proudest moments was when the club received AKC recognition.

Thank you for remembering my mother and her dedication to the breed.

*baruch tihyeh*



*Continued on page 24*

## CANAAN DOG RESCUE NETWORK

### - NEWS & SUCCESS

SUBMITTED BY CARRIE CABRERA

With the recent successful placement of Canaan Dog Gracie (see below for her story) by the Canaan Dog Rescue Network, it seemed like a good time to [re]introduce the CDRN to everyone. Since 2004 our mission is to help owners, breeders and shelters pair purebred Canaan Dogs in need of a new home with a forever home.

#### The CDRN Officers and Directors are:

President/Director:	Carrie Cabrera
Vice President/Director:	Alla Geretz
Secretary:	Doug van Cleve
Treasurer/Director:	Evan Kent

#### The heart and soul of the CDRN are the tireless volunteer coordinators. They are:

Carrie Cabrera  
Eastern US  
koltuvcanaandogs@yahoo.com

Alla Geretz  
Midwest US  
rgeretz@aol.com

Doug van Cleve  
Western US  
dvancleve@yahoo.com

Genny Landis  
Canada  
gml.mktg@rogers.com

Our web site is <http://www.canaandogrescue.com/> and our Facebook page can be found by searching for "Canaan Dog Rescue Network". We are always looking for volunteers and foster homes. If you are interested, please contact any one of us. Donations are also always welcomed and as a 501(c)(3), they are tax deductible.

Luckily the demand for our services is very small in large part due to the dedicated efforts of all the Canaan Dog breeders and their diligence in finding just the right home for each Canaan Dog they place.

#### Gracie's Success Story:

Gracie is a lovely 8 year old that needed to find a new home where she could be the only dog. She is an active, goofy fun-loving dog. As she is great with kids, the CDRN was lucky to find an adoptive family with a young boy for her to play



with. The beginning of May found her traveling from Texas, where she was lovingly fostered for a couple of months by one of the CDRN's superstar foster families, to Pennsylvania to meet her forever family. As she settles in to her new home, we'll provide updates and hopefully pictures on our Facebook page.





**2012 CDCA  
Annual Meetings  
& National Specialty  
July 25-30, 2012**

**UPDATED Schedule**

**(all pending final approval and crossing of Ts and dotting of Is...):**

**Wednesday, July 25**

**1:00 pm** ... Board Meeting ... Host Hotel

**7:00 pm** ... Hospitality ... Host Hotel

**Thursday, July 26**

**8:00 am** ... Annual General Meeting ... Host Hotel

**approximately 10:30 am** (or half an hour after AGM, whichever is later) ... Round Table Forum (Learn about dogs of the past & present from committed breeders - more details in elsewhere) ... Host Hotel

**1:00 - 3:00 pm** ... Arlene Pilcer presents the Ultimate Puppy Program ... Host Hotel

*Ultimate Puppy Program: Puppy environment enrichment for more confident, well rounded puppies. She'll cover the early neuro stimulation exercises, things to add to the environment as eyes & ears open, exposure to new things & new people.* <http://setterwoods.netfirms.com/uspp%20video.htm>

**5:30 pm ... NATIONAL SPECIALTY ... Show Site**

Carolina Foothills Cluster at the TD Convention Center

Puppy & Veteran Sweepstakes - Judge Bill Buell

Junior Showmanship - Judge Bill Buell

Breed Judging with all our traditional regular & non-regular classes – Judge Neena Van Camp

**Friday, July 27**

We will request late judging time ... **Spartansburg Kennel Club/Designated Specialty** ... Show Site

Judge's Ringside Mentoring will be Offered

Breed Judge - Stephanie S Hedgepath

Parade of Titleholders

Group Judge - Linda More

*Obedience & Rally judges pool for the weekend:*

David Haddock, Judith Brown, Richard Strong, Jean Porter Lynch and Patricia Strong (see premiums for specific assignments). This cluster of shows is a Regional Qualifier for Obedience.





## 2012 CDCA Annual Meetings & National Specialty July 25-30, 2012

### Schedule, continued:

#### Saturday, July 28

**Hendersonville Kennel Club/ Supported Entry ...** Show Site

Breed Judge - Linda Robey

Group Judge - Neena Van Camp

Judges Education in conjunction with the Carolina Judges group on site at show

**6:00 pm ...** Banquet, Awards Dinner & Auction at Host Hotel - details elsewhere in this issue

#### Sunday, July 29

**Greenville Kennel Club/Supported Entry ...** Show Site

Breed Judge - Linda More

Group Judge - Linda Robey

#### Monday, July 30

**7:00 am ... Herding ...** Red Creek Farm ... Farm is about 45 miles south of the host hotel

<http://redcreekfarm.com/>

Registration included elsewhere in this issue.

---

**As per Article II, Section 1 of the CDCA By Laws, the 2012 Annual Meeting of the Canaan Dog Club of America, Inc. will be held on Thursday, July 26<sup>th</sup> at 8am at the Drury Inn, 10 Carolina Point Parkway, Greenville, SC. (The Board of Directors will meet at the hotel at 1pm the previous day.)**



To help facilitate the meeting, club members are encouraged to submit items for the agenda to the Recording Secretary, Joan Capaiu Greene, to arrive by Wed., July 11, 2011 (4801 Laguna Blvd #105-227, Elk Grove, CA, 95758).





# 2012 CDCA Annual Meetings & National Specialty July 25-30, 2012

## NEW THIS YEAR!

### Top Canaan Dogs of 2011

If your dog was among the top CDs in performance or conformation in 2011, watch for your invitation to submit their info for a special presentation at the banquet. Contact Julie Haddy 864-325-3562 or [pawslover@gmail.com](mailto:pawslover@gmail.com) for more information.

### Round Table Forum

*A chance for Canaan Dog breeders—from those who have been in the breed for years to those just starting out—to discuss their favorite dogs, favorite memories and where we are going as a breed and how to get their together!*

A power point presentation of photos of named dogs & people (whenever possible) will accompany the discussion, and a booklet containing all submissions will be produced.

If you have bred a litter of Canaan Dogs, you are invited to participate! You need not be able to attend the national. All submitters will receive a copy of the booklet either at the National or via USPS. This is a wonderful historic opportunity to learn about dogs of the past and plan for the future of CDs!

### **DEADLINE: extended to May 15, 2012**

Send your answers to the following questions to [riverrockcd@yahoo.com](mailto:riverrockcd@yahoo.com) or Chris Miller, 3220 Gees Mill Road, Conyers GA 30013.

Name	Who are/were your mentors in Canaan Dogs - and in dogs in general?
Kennel Name	
Number of years in Canaan Dogs	What is your favorite CDCA National Specialty memory?
Number of years in dogs (if different from number of years in Canaan Dogs)	Name the person you would like to see judge conformation at the National Specialty (can be a past judge, a current judge or even someone who isn't even thinking of judging yet!)
What Canaan Dog first sold you on the breed? Was it a dog you met a show, a photo, etc.?	Which MALE and FEMALE Canaan Dog bred or owned by you is/was the best of your dogs?
What do you think is the greatest challenge facing Canaan Dogs today, and what would you do to solve it?	Name your favorite MALE and FEMALE Canaan Dog of all times that you DID NOT bred or own.
Comment on breed type and breed standards around the country and world.	



## 2012 CDCA Annual Meetings & National Specialty July 25-30, 2012

### Misc. Details

**Did you know ...** *Catalog Ads are open to all!* Thank your breeder, celebrate your first, second or fifth Canaan Dog, send your best wishes or remember a dog or person no longer with us. Additional information on ads may be found else where in this issue, or for more information, contact April Lee, 252-339-6128 or [arlee243@gmail.com](mailto:arlee243@gmail.com).

**Premium lists for the National Specialty and the Cluster will be mailed to all club members by the Supt. MB-F. Additional copies, the online version, etc. may be found at [www.infodog.com](http://www.infodog.com)**

### Greenville info:

<http://www.greenvillecvb.com/>

<http://www.greenvillesc.gov/Culture/VisitorsGuide.aspx>

<http://www.fallspark.com/>

### Show events will be at the TD Convention Center

<http://www.tdconventioncenter.com/>

### Yum! Recommended Local Restaurants—from local CDCA foodies!

Travinia's Italian Kitchen (on Woodruff Rd) (Italian)  
John Paul's Armadillo Oil Co (Congaree Rd) (Excellent Ribs)  
Olympia's (Congaree Rd) (Greek/Italian)  
Soby's (Main St)  
Nosedive (Main St)  
India Palace (S Pleasantburg Dr)  
Pita House (S Pleasantburg Dr) (Mediterranean)  
Carolina Ale House (Woodruff Rd & Downtown)  
Stax Omega (Orchard Park Rd) (Excellent Breakfast)  
El Patron's (Woodruff Rd) (Mexican)  
Lemongrass (Main St) (Thai)







**2012 CDCA  
Annual Meetings  
& National Specialty  
July 25-30, 2012**

**Who's Who!**

**Show Chair: Nancy Ben-Dror**

864-313-8185    [nancybd@onthetopdogschoo.com](mailto:nancybd@onthetopdogschoo.com)

**Specialty Committee:**

Julie Haddy    864-325-3562    [pawslover@gmail.com](mailto:pawslover@gmail.com)  
Chris Miller    770-827-2762    [riverrockcd@yahoo.com](mailto:riverrockcd@yahoo.com)  
Annette Israel    919-880-9917    [eastlandcanaans@gmail.com](mailto:eastlandcanaans@gmail.com)

**Host Hotel: Drury Inn at Woodruff Rd, Greenville SC**

Phone - 864-288-4401

<https://www.druryhotels.com/propertyhotelservices.aspx?Property=0132>

Group Number: 2127868

Rate \$79 per night

No Pet Fee (CDCA Room Policy applies)

Includes Breakfast & Afternoon Snacks

Convenient Access to food, shopping & I-85 and I-385

About 5 miles from Show Site

**Trophy Donations—Always Welcomed!**

Chris Miller    770-827-2762    [riverrockcd@yahoo.com](mailto:riverrockcd@yahoo.com)

**Catalog Ads—Deadline June 1, 2012**

**More information elsewhere in this issue.**

April Lee    252-339-6128    [arlee243@gmail.com](mailto:arlee243@gmail.com)

**Banquet Reservations -Deadline July 1, 2012**

**Find Reservation Form elsewhere in this issue.**

Annette Israel    919-880-9917    [eastlandcanaans@gmail.com](mailto:eastlandcanaans@gmail.com)



# NEW AKC CANAAN DOG STANDARD AS OF MAY 30, 2012

Minutes of the AKC BOARD OF DIRECTORS

April 9 – 10, 2012

## “PROPOSED CANAAN DOG STANDARD REVISION

The Board VOTED to approve the revisions to the Canaan Dog Breed Standard effective May 30, 2012.”

---

### AKC Canaan Dog Breed Standard

#### General Appearance

The Canaan Dog, the National dog of Israel, is a herding and flock sentry dog originating in the Land of Canaan. The Canaan Dog is a pariah dog type that is naturally alert, inquisitive and watchful. He is mistrustful of strangers and unfamiliar environments, yet loyal and loving with his family. A square dog of medium size, moderate and balanced without extremes, showing a clean outline. The moderately angulated Canaan Dog moves with athletic agility and grace in an efficient, ground-covering endurance trot. He has a wedge-shaped head with low-set erect ears, a high set brush tail that curls over the back when confident, and a straight, harsh, flat-lying double coat. There is a marked distinction between the sexes.

#### Size, Proportion, Substance

*Size*--Height at the withers is 20 to 24 inches for dogs and 19 to 23 inches for bitches. The ideal Canaan Dog lies in the middle of the stated ranges.

*Proportion*--Square when measured from the point of the shoulder to the ischium and from the point of the withers to the ground. *Substance*--Moderate. Dogs generally weigh 45 to 55 pounds and bitches approximately 35 to 45 pounds. Dogs distinctly masculine without coarseness and bitches feminine without over-refinement.

#### Head

Elongated, the length exceeding the breadth and depth considerably. Wedge-shaped, when viewed from above. Slightly arched when viewed from the side, tapering to stop. The region of the forehead is of medium width, but appearing broader through ears set low to complete an alert expression, with a slight furrow between the eyes. *Expression*--Alert, watchful and inquisitive. Dignified. *Eyes*--Dark, almond-

shaped, slightly slanted. Varying shades of hazel with liver-pointed dogs. Eye rims darkly pigmented or of varying shades of liver harmonizing with coat color. *Fault*--Unpigmented eye rims. *Ears*--Erect, medium to large, set moderately low, broad at the base, tapering to a very slightly rounded tip. Ears angled very slightly forward when excited. A straight line from the inner corner of the ear to the tip of the nose should just touch the inner corner of the eye and a line drawn from the tip of the ear to the tip of the nose should just touch the outer corner of the eye. Ear motion contributes to expression and clearly defines the mood of the dog. *Major Fault*--In the adult dog, other than erect ears. *Stop*--Slightly accentuated. *Muzzle*--Tapering to complete the wedge shape of the head. Length equal to or slightly longer than the length of the skull from the occiput to stop. Whisker trimming optional. *Nose*--Darkly pigmented or varying shades of liver, harmonizing with coat color. *Lips*--Tight with good pigmentation. *Bite*--Scissors.

#### Neck, Topline, Body

*Neck*--well arched. Balance to body and head and free from throatiness. *Topline*--Level with slight arch over the loins. *Body*--Strong, displaying athletic agility and trimness. *Chest*--Moderately broad and deep, extending to the elbows, with well-sprung ribs. *Loin*--Well-tucked up. Short, muscled flanks. *Tail*--Set high. When confident tail will be carried curled over the back, either in a curl or sickle, with one full curl being the ideal. When extended, the bone shall reach to the hocks.

#### Forequarters

Shoulders moderately angulated. Legs straight. Pasterns flexible with very slight slope when viewed from the side. Dewclaws may be removed. *Feet*--Catlike, pads hard, pigmentation harmonizing with nose and eye rims. Nails strong, hard, pigmentation harmonizing with either nose and eye rims or coat.

#### Hindquarters

Moderately angulated. In balance with forequarters. Straight when viewed from the rear. Thigh musculature well-developed, moderately broad. Hocks well-let-down. Dewclaws must be removed. Feet and nails as in forequarters.

#### Coat

Double coat. Outer coat-straight, harsh, flat-lying. Outer coat of medium length on body, shorter on front part of the legs and head; longer on ruff, tail, top of withers and back of thigh. Ruff more pronounced on males. Thick brush tail tapering to a pointed tip. Undercoat- soft and short with

*continued on next page*

*continued from previous page*

density varying with climate. Excessively long outer coat that masks the clean outline of the dog is undesirable as is any trimming that alters the natural appearance of the dog.

### **Color**

There are two color patterns. Pattern 1) Predominantly white with mask and with or without additional patches of color (large body patches are desirable). Pattern 2) Solid colored with or without white trim. Color may range from black through all shades of brown - sandy to red or liver. Shadings of black on a solid brown or tan dog are frequently seen. The trim on a solid colored dog may include chest, undercarriage, feet and lower part of leg and tip of tail. In all color patterns self-ticking may be present. *Disqualifications--a) Gray and/or brindle. b) All white.*

### **Mask**

The mask is a desired and distinguishing feature of the predominantly white Canaan Dog. The mask is the same color(s) as the body patches on the dog. The basically symmetrical mask must completely cover the eyes and ears or can completely cover the head as in a hood. The only allowed white in the mask or hood is a white blaze of any size or shape and/or white on the muzzle below the mask. Faults--On predominantly white dogs--absence of mask, half mask, or grossly asymmetrical mask.

### **Gait**

The characteristic gait is a brisk and tireless trot covering more ground than expected. Moderate angulation results in the appropriate reach and drive of the natural dog's endurance trot. In this trot the rear paw steps into the footprint of the front paw. His trot tends to converge to the center at higher speeds. The Canaan Dog is agile, graceful and able to change speed and direction instantly. Correct movement is essential to this breed.

### **Temperament**

Alert, vigilant, devoted and docile with his family. Reserved and aloof with strangers. Highly territorial, serving as a responsive companion and natural guardian. Very vocal, persistent. Easily trained. Faults--Shyness or dominance toward people.

### **Disqualifications**

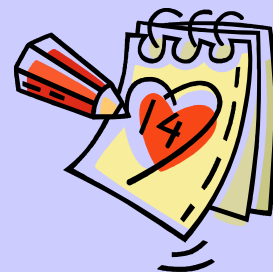
*Gray and/or brindle.*

*All white.*

## **PLANNING AHEAD!**

### **2014 ANNUAL MEETINGS & NATIONAL SPECIALTY!**

The Board is seeking applications to **host the 2014 National**. Information on what is required at our Annual Meetings & National Specialty may be found on at [www.cdca.org](http://www.cdca.org) or from your favorite Board Member.



Applications to host the 2014 National are due to the Board by July 25, 2012 so we may make a decision at our Annual Board Meeting. (Early applications welcome!)

**IF NO VIABLE APPLICATIONS ARE RECEIVED BY THE DEADLINE, WE WILL USE ONE OF OUR FALL BACK OPTIONS. Most likely, this would mean the 2014 National Events would be held in September in Upstate New York (2013 is scheduled for August in Atlanta).** To see the National Events held elsewhere, the Board must receive a workable alternative.

As part of the planning for the 2014 National, the Board is also tasked with selecting a judge for that Specialty. To that end, we have formed a Judges Selection Committee. Our thanks those listed below who have volunteered for this important job.

#### **Members:**

Donna Dodson  
Cheryl Hennings  
Pamela Rosman

Denise Gordon  
Genny Landis

#### **Chair:**

Bryna Comsky

Suggestions of judges may be sent to Bryna or your favorite member of this committee. E-mail: [bcomsky@aol.com](mailto:bcomsky@aol.com); phone: 847.885.8395.

## THE CANAAN DOG CLUB OF THE UNITED KINGDOM'S SINGLE-BREED OPEN SHOW

SUBMITTED BY ELLEN MINTO

The Canaan Dog Club of the United Kingdom held their 12<sup>th</sup> Annual Single-Breed Open Show on Sunday 8<sup>th</sup> April. The fact that Easter happened to fall on the show weekend had a slight impact on the entries, but the judge, Mrs Pearl Chadwick (Pearlian)

still drew a very respectable entry of 20 dogs for 24 entries with only 1 absentee. (In the UK you are allowed to enter more than one class with your dog.) Mr Ken Bartlett stewarded for Mrs Chadwick and the friendly attitude to exhibitors and the breed by both judge and steward added greatly to everyone having a pleasant day. In fact, though neither Mr Bartlett or Mrs Chadwick own a Canaan, they have shown their support of the breed by being club members for over 6 years now. Mrs Chadwick's Best Dog,

Am CH Ha'Aretz Hayyim For Anacan (Imp USA), bred by Bryna Comsky and owned by Ellen Minto, was also her choice for Best In Show, and she was quite ebullient in her praise of him. Reserve Best Dog went to Ellen Minto's Anacan Issachar ('Izzy'), a son of the Best In Show dog. Best Bitch, Reserve Best In Show & Best of Opposite Sex was Patrick & Barbara Gold's Anacan Shoshannah For Amicitia ('Rosie'). [Rosie is a litter sister to Anacan Beit Shemesh who resides in the USA with Donna Davison.] The Reserve Best Bitch, Anacan Happy Anni, also owned by Ellen Minto, is a Hayyim daughter. Best Puppy In Show was awarded to Diane Collins's 7-month old bitch, Capshulacan Ishkezar. Best Veteran In Show was Ellen



Minto's 10 year old Anacan Sheez The One ('Honey'), grandmother to the Reserve Best Bitch. Hayyim was also winner of the Progeny Class, represented by Izzy, Anni, and two of Anni's sisters, Anacan Silhouette ('Silly') and Ann Hutchinson's Anacan Onyx ('Wulfin'). BTW this was 'Wulfin's' first show and Ann told me she, herself, had not been in a show ring for 40 years, and then it was only at an exemption show (equivalent to a match). So well done Ann.

The CDC of the UK has a fabulous trophy table, and the trophies and food prize vouchers donated by Arden Grange were handed out by Mrs Chadwick, who had also brought along a bottle of wine for each of the Best In Show, Reserve Best In Show and Best Puppy In Show winners. The Club also awards the following perpetual trophies annually based on a

point system for shows entered in the previous year: THE SHEBABA TROPHY for the dog or bitch winning the most points for placements in breed classes at both championship and open shows, won this year by the Gold's 'Rosie'. THE TIRON ME BNEI

HABITCHION TROPHY for the dog or bitch coming second in points and this was won by Minto's 'Izzy', who also won THE GOLDA TROPHY for the dog or bitch winning the most points as a Special Junior. These were handed out after the show trophies had been distributed.

Arden Grange had also donated a large dog food prize voucher for the Club's raffle table and this was won, most appropriately, by Mrs Chadwick, who had won it last year as well! I must not forget to mention the great job done in the kitchen by Patrick Gold, who kept everyone fed and

supplied with teas and coffees and hot cross buns, and by the Show Secretary, Diane Clark, who stepped in to act as show photographer in between selling raffle tickets. The show is too small to attract the services of a professional photographer, so the club has to depend on photos taken by spectators, with the result that we never have the slick professional photos you have at your National in the States. However the exhibitors and spectators do enjoy a friendly and relaxed atmosphere, time to chat and and overall good day. We're all looking forward to next year's show.

*Photos top to bottom: BIS, RBIS, Best Veteran and Best Puppy.*



## COMMITTEE REPORTS & UPDATES

### WELCOME NEW MEMBER & MEMBERSHIP REMINDERS SUBMITTED BY AMY PRESTON

At the start of renewal season the CDCA had exactly 100 members. Eight did not renew leaving us with 92. With the addition of 4 new members, we are currently back up to 96 members.

Please welcome:

Susan Sorensen  
85 Canada Goose Drive  
Hackettstown, NJ 07840

Samuel and Karen Pallin  
45 Jacobs Road  
Edgewood, NM 87015

Rachel Reams  
609 School Street  
Putnam, CT 06260

Francis Plouffe  
12 Keys Drive  
Chicopee, MA 01020

New Full membership (prior associate):  
Melinda Linton  
6351 Lintons Way  
Ann Arbor, MI 48105

I have been doing my best to clean up the CDCA-L yahoo group list. Because many people have multiple email addresses, cross referencing has taken some time. I have removed several who are no longer members and am still trying to identify a few odd ones. Most importantly, I will be starting a new campaign to get all members with an email address to join the group. If you are not on the list, or would like to change or add an email, please contact me at RelicCanaans@yahoo.com and I will take care of those changes for you.

Amy Preston, CDCA Membership  
81 County Home Road, Thompson, CT 06277  
860-235-5075

WELCOME

## CDCA PUBLICITY & PUBLIC EDUCATION SUBMITTED BY BRYNA COMSKY

The CDCA Public Education Committee gained two new members and lost a third. Welcome to Rachel Reed and Rand Kalik from Bryna Comsky and Norma Bennett Woolf. With strong leadership from the American Kennel Club and CDCA members the CDCA PEC will encourage and participate in the holding of national and local RDO (Responsible Dog Owner) Days, prepare promotional items for distribution at AKC events such as Meet the Breeds and the AKC Invitational, and exchange information with other national clubs. The idea of the versatile Canaan Dog will be promoted and marketed to create a stronger demand and understanding of the breed. Inquiring people will be encouraged to visit the CDCA website to locate reputable breeders and for more information. Please also go to the AKC site for more information about promoting dogs in general and Canaans in particular.

## CDCA COMMUNICATIONS SUBMITTED BY AMY PRESTON

I would like to encourage all members to join the CDCA-L yahoo group list. Only about 60% of our membership are currently members of this group, while only about 5 families do not list an email address.

I myself am a member of several yahoo groups and understand that you may be concerned about becoming overloaded with extra emails in your in box. Not so with the CDCA list. This list is not routinely used for chat or gossip, and is often silent for days or weeks at a time. It is however activated for club business such as deadlines for Kibitzer articles, National Specialty, regional events, membership renewals, open positions and committees seeking input from the members. The list is used to inform members about upcoming shows, possible points, and yes sometimes when there are births or deaths in both our canine and human families. If you are still worried about excess mail, by choosing the digest version, you will only receive one daily email, even if there are multiple posts within the day.

Recently, there was discussion on one of the other lists regarding the approved changes to the breed standard. Some said they were not aware of this process. Members were informed, information and discussion was posted on the CDCA yahoo

*continued on page 21*

## TALES FROM THE EAST SIDE: THE CANAAN CREW SHOWS OFF IN SYRACUSE

SUBMITTED BY RACHEL REAMS

The east coast show circuit never really stops, even over the end of year holidays, but it does slow down a little. However, by the time Spring rolls around, the show machine has warmed up again and is running in top gear, and this year was no exception. The four-day Syracuse, NY show cluster started on Thursday, March 29 with a special treat in store for Canaan Dog fans: there were nine Canaans in attendance, all shiny clean and ready to strut their stuff for the judges!

For those keeping track - here is the whole entry over the weekend (all dogs entered and/or shown all four days unless otherwise noted):

**Rickey** - CH Rosendog Bsnatch Not Me To RivRoc: Amy Preston & Lindsey Toulouse

**Clover** - Relic's Little Miss Can't Be Wrong - Amy Preston & Rachel Reams (Thursday – Saturday)

**Chrissie** - JayKay Spirit of Adventure - Genny Landis (Friday – Sunday)

**Poppy** - Relic's Rock The Casbah - Amy Preston & Renee Kent

**Jez** - Jezebelle - Dave Pohl

**Reen** - Bandersnatch The Beekeeper's Apprentice - Amanda Pough, Judy March Rosenthal & Christina Miller

**Rosie** - Relic Rose - Amy Preston & Brian Still

**Rickie** - CH JayKay Richelieu Rules - Genny Landis

**Ida** - GCH CH Bandersnatch Rsndg Ida Know RivRoc RN - Amanda Pough, Judy March Rosenthal & Christina Miller (Friday and Saturday)

Yep, you read that right, Rickey and Rickie. To avoid confu-

sion, we spent the weekend prefixing their names with their country of residence, as Amy Preston's Rickey is a US resident, and the black-and-white Rickie calls the great country of Canada home with owner Genny Landis.

Judge Dana Cline got the Canaans started Thursday. He elected to award Winners Bitch to Clover, for her first major. Reserve Winners Bitch went to Reen. US Rickey strutted his stuff to take Best of Winners and picked up a major on the crossover points. The day finished with the Canadian

Rickie taking Best of Breed, and Clover taking Best of Opposite.

Thursday - Dana Cline judge  
1-5-1-0 (# of class dogs - # of class bitches  
- # of CH dogs - # of CH bitches)  
WD/BOW: US Rickey 4 pts  
WB/BOS: Clover 4pts  
RWB: Reen  
BOB: CA Rickie

Friday's show was hosted by the Central New York Kennel Club, with judging under the auspices of Charlie Olvis. The theme for Friday seemed to be 'sibling rivalry.' Poppy decided she wasn't going to be outdone by litter sister Clover, and picked up her first major by going Winners Bitch for five points, with Reen going Reserve. US Rickey wasn't ready to give up his claim to Best of Winners and took home his second major, finishing his championship, and his sister Ida stepped up to win Best of Breed, with Canadian Rickie going Best of Opposite.

Friday - Charlie Olvis  
1-6-1-1  
WD/BOW: US Rickey 5pts to finish his Championship  
WB: Poppy 5 pts  
RWB: Reen  
BOB: Ida  
BOS: CA Rickie

CA Rickie added to the fun by finishing his AKC Rally Novice title at Friday's show. He earned his title in three straight trials! Since Genny doesn't get to the US very frequently, his first leg was earned during the 2011 CDCA National Specialty weekend and then he had to wait almost a year for a chance to finish the title!



At the Saturday Onondaga Kennel Club show, the wins con-

## EAST SIDE, CON'T

tinued under Judge Betsy Horn Humer. Clover doubled down on Poppy and took the Winners Bitch ribbon for her second major, giving her another four points. Poppy bit back by taking Reserve to Clover. New champion US Rickey was bumped up to compete with the big dogs, but Canadian Rickey wasn't about to share the limelight, going Best of Breed, and Ida held on with Best of Opposite, leaving US Rickey to be content with picking up the Select award.



Sat - Betsy Horn Humer  
0-6-2-1  
WB: Clover 4pts  
RWB: Poppy  
BOB: CA Rickie  
BOS: Ida  
Select: US Rickey



Also on Saturday was a show-hosted Meet the Breeds feature, with the Canaans covered by Clover and her grand-uncle Peter, both dressed to the nines in their black and white coats. Veteran Peter worked the crowds like an expert, raking in the treats and the admiring pats, while Clover cruised for all the attention she could get. Both dogs did their breed proud by showing off just how amazing these dogs can be!

The Finger Lakes Kennel Club wrapped up the weekend cluster on April 1, but Judge Michele L. Billings was nobody's fool as she pointed to Reen for Winners Bitch for four points, with Rosie going Re-



*Follow the CDCA  
on Facebook!*

Search for:  
Canaan Dog Club of America  
and  
Canaan Dog Club  
of America Agility Trials



[www.cdca.org](http://www.cdca.org)

For up to the minute information on CDCA events and action items.  
NEW: Member only tab: Delegate Portal and the latest *Canaan Kibitzer*.

serve. Going into the weekend, owner Amy Preston had promised US Rickey that if he finished his championship, she would send him off into a well-deserved retirement, and he decided to go out with a bang, picking up the Best of Breed, with the Canadian Rickey going Select. Reen ended her weekend with the Best of Opposite ribbon.

Sun - Michelle Billings  
0-5-2-0  
WB/BOS: Reen 4pts  
RWB: Rosie  
BOB: US Rickey  
Select: CA Rickie

Four days is a long time for the dogs and for their owners, and by the end of Sunday, everyone was ready pack it in and head back to their respective homes. The show was a great way to ring in the spring, and here's to looking forward to the National Specialty show in the summer. See you there!

*Photos facing page—top to bottom: US Rickey, Clover & Poppy. This page: Reen, CA Rickie & Ida.*



## WESTMINSTER 2012

SUBMITTED BY: BRYNA COMSKY

PHOTOS BY: SHELIA PAGE

Ida and Magnum were at the top of their game. Kitty was back in the ring with Ida [and Tara with Magnum, with Bruce cheering from a nearby hospital bed, missing the Garden due to kidney stones. The] Canaan Dog cheering sections brought both dogs and their handlers to Best of Breed and Best of Opposite Sex to Best of Breed awards. Judge Mrs. Kimberly Meredith-Cavanna awarded the honors, and we all enjoyed sustained moments of fame for the two Canaans on the Garden's green carpet. Magnum, with his striking black and white color pattern, went to Herding Group, judged by Houston Clark. He put up the German Shepherd Dog, "Captain Crunch," handled by Jimmy Moses. Jimmy had won the Garden with "Manhattan" under Judge Mr. Lou Auslander in the '80's, and won or placed in group with other great Shepherds on the lead. Judge Mr. Clark had given Magnum Best of Breed at the CDCA National Specialty 2010. Magnum repeated the win in 2011, under Judge Mrs. Monica Canestrini, won the Herding Group judged by Ms. Neena Van Camp, and followed with his second BIS win, this time under Judge Mr. Carl Liepmann. Paula Nykiel gave Magnum his first Best in Show. About ten years ago, Irene Bivin "pulled" a Canaan dog in group at the Garden. If you agree that what happens at the Garden is often more mysterious and unpredictable than at other shows, then you may think that next year might be the year of the first Canaan dog group placement on the green carpet. Why not aim for Best in Show while we're at it?

The Peke, Ch Palacegarden Malachy, a three-year-old owned by Iris Love and S. Middlebrooks, and his handler, David Fitzpatrick, won Westminster 2012 under Judge Mrs. Cindy Vogels, who called the night "stupendous" and "spectacular" and referred to Malachy as a "super dog" that "conformed to the standard so magnificently and flawlessly." For the occasion Iris Love wore a striking jacket of imperial yellow color to remind us that this is the year of the dragon. She described herself as feeling only "ecstasy," and her dog as "a dignified, devoted and charming companion whose favorite toy is a squeaky rat." Despite her warning to the media to keep their moving, covered microphones far away from Malachy, he had them for breakfast the next morning at the Today Show, and probably as an appetizer at Sardi's. Malachy's handler had similar words

to distinguish his dog, and stated that he had been a "dedicated Peke person" since the age of 14.

Next year class dogs will be judged at the Piers at the west end of 55<sup>th</sup> Street. There will be room for 3500 dogs that will compete for Best of Breed, Best of Winners, and Best of Opposite Sex from the Bred-by Exhibitor, American-bred, and Open Classes. National Specialty winners from 2012 will be formally invited. Each entry must be major-pointed. The Best of Breed winners return to the Garden for Group competition. We could ask for nothing more from Canaan Dogs than a larger entry in 2013.



*Did you know that the Kibitzer was nominated for the Maxwell Award offered by DWAA (Dog Writers Association of America) and received a Certificate of Merit?*

## NEWS & REPORTS FROM AKC

### Annual Registration Statistics for Canaan Dogs

Year	Litters	Dogs
2011	11	46
2010	15	43
2009	21	67
2008	13	61
2007	25	60
2006	13	66
2005	26	75
2004	23	85
2003	35	72
2002	24	87

### THE AMERICAN KENNEL CLUB Canaan Dogs AKC TopDogs' 2011

#### CONFORMATION

#### Using Breed Totals Starting January 1, 2011 and ending December 31, 2011

Total Rank Name Sex BOB/V Defeated

- 1 GCH CH Pleasant Hill Magnum Of Samara D 63 83
- 2 GCH CH Bless-Ed Be Aryon D 12 40
- 3 GCH CH Cherrysh Sing So Into You RA D 12 34
- 4 GCH CH Blue Sky Desertstar Orion The Hunter RN D 5 33
- 5 GCH CH River Rock Take Me Higher CA B 5 22
- 6 CH Rivroc Lycm Own Dream Bsnatch Rsndog B 8 12
- 7 CH Cherrysh Crown Of Jewels B 2 10
- 7 CH D&J Ha'Aretz Hannah's Legacy B 2 10
- 9 CH Celev Melek's Page Ketem D 2 9
- 9 CH Jaykay Richelieu Rules D 6 9
- 11 GCH CH Bsnatch Rsndg Ran Away To Rivroc RN D 1 8
- 11 CH Renegade Camber B 2 8
- 13 GCH CH Bandersnatch Rsndg Ida Know Rivroc RN B 22 7
- 13 CH Pleasant Hill Heavenly Daze B 4 7
- 13 CH Orela Me Shaar Hagai RN AX MXJ NF B 1 7
- 16 CH Cherrrysh Burning Desire B 1 5

- 16 CH Gemari's 1st Rose B 1 5
- 18 Cherrysh The First Noel B 1 4
- 18 CH CHF Israeli Jewel B 2 4
- 18 CH D&J Ha'Aretz Ajb's Matityah B 2 4 8 River Rock Rattle N Hum D 2 4
- 18 Dor Vedor Haaretz Peninah B 2 4
- 18 River Rock Rattle N Hum D 2 4
- 23 CH Ha'Aretz Alpha Reva B 1 3
- 23 Hatikva Cherrvsh Dream Of Ewe D 1 3
- 23 CH Hatikva Ve Hasimcha Me Shaar Haggi D 1 3
- 23 Cherrvsh Treasures Of Heaven B 3 3
- 23 CH Celev Ron's Bashert Ameetz D 1 3
- 23 CH Celev Ron's Bashert Kochava B 1 3

#### OBEDIENCE

There were no dogs competing at the TopDogs level in Obedience for 2011.

#### AGILITY MACH

Considering Events Held Between January 1, 2011 and Ending December 31, 2011 But Limited To Events Processed Through Friday, January 27, 2012

Sorted by the Score (Double Q's x 10) + MACH points

Total Total Rank Name Sex Points Dbl Qs Score

- 1 MACH3 Mazel Tov Prtmjl Minnie Pooh CD XF B 648 28 928
- 2 MACH Prince Of Thieves CD GN RAE MXF D 434 7 504
- 3 Ditto Hernandez MX MXJ XF B 250 5 300
- 4 Louie MX MXJ D 104 7 174
- 5 CH Orela Me Shaar Hagai RN AX MXJ NF B 56 2 76



## REPORTS OF THE SECRETARIES

### From the Recording Secretary

#### March 2012 Communique

The CDCA received word that longtime member Lorraine Stephens passed away August 25th, 2011. She had a massive heart attack that took her quickly and unexpectedly, per her son Eric.

The CDCA received a media inquiry regarding the potential closing of Myrna Shibboleth's kennel in Israel.

Discussions were held regarding AKC elections and Delegates meeting.

AKC Delegate reports were received from Pamela Rosman.

No new membership applications were received or voted on in March.

No Board votes occurred during March.

#### April 2012 Communique

The CDCA received a media inquiry regarding the potential closing of Myrna Shibboleth's kennel in Israel, and a request to quote part of our Breed Standard in an upcoming book in the British educational Series by Barrons. Laughably, a request came from HSUS to participate in its' Breeders Advisory & Resource Council (BARC).

Testing proceeded and was completed for the OFA's Canaan Dog Health survey, developed through joint participation of both the CDCA and ICDCA. Now it's up to OFA as to when it will go live.

CDCA Versatility and ROM title application forms were discussed and updated.

AKC Delegate reports and information on the new AKC Owner-Handler Series were received from Pamela Rosman.

Discussion of NYC Meet The Breeds later this October – more participants needed!

Discussion of Member of the Year and Dog of the Year nominations

Associate Membership application:

**Frank Plouffe Jr.** – endorsed by Amy Preston. Approve: Amanda Pough, Bryna Comsky, Joan Greene, Annette Israel, Christina Miller, Donna Davison, Julie Haddy. Disapprove: none. Not voting: Renee Kent, Ken Cabrera. Membership **approved**.

Associate Membership application:

**Rachel Reams** – endorsed by Amy Preston. Approve: Amanda Pough, Bryna Comsky, Joan Greene, Annette Israel, Ken Cabrera, Christina Miller, Donna Davison, Julie Hadd. Disapprove: none. Not voting: Renee Kent. Membership **approved**.

Full Membership application:

**Melinda Linton** – endorsed by Bryna Comsky and Donna Dodson. Approve: Amanda Pough, Bryna Comsky, Joan Greene, Annette Israel, Christina Miller, Donna Davison, Julie Haddy. Disapprove: none. Not voting: Renee Kent, Ken Cabrera. Membership **approved**.

*Joan Capaiu Greene*

### From the Corresponding Secretary

Received:

AKC Approval of CDCA Agility Trial Events to be held May 11-13, 2012, and Nov. 23-25, 2012.

Notice of AKC all-breed AKC herding trial in Wisconsin, September 22 and 23, 2012, Polly Simpson Farm, New Richmond, Wisconsin, Trial Chair, Virginia Bailey 715 549 6365 or email [agility\\_gage@hotmail.com](mailto:agility_gage@hotmail.com)

Notice of Willie Nelson Radio PSA from AKC Communications

Letter from Morris Animal Foundation announcing its accomplishments and calling for sponsorship of programs. Megan Hampton, Development Manager [mhampton@morrisanimalfoundation.org](mailto:mhampton@morrisanimalfoundation.org).

Letter from Tamsin Pickeral in England, who is writing a new book on dogs, *The Spirit of the Dog*, "which looks at the historical background to 90 different dog breeds. The letter asks for permission to use small parts of the breed standard re appearance, head, neck and shoulders, legs, topline, tail and color. <http://www.tamsinpickeral.com>.

From the Sunshine Division: Judy March Rosenthal: We said goodbye to Helen, the aged Brussels Griffon, who called the shots, set the schedule, and in general, ran the Rosendog Household. Among many other tributes, Judy wrote her a poem for her to keep with her through eternity. She was there before most of the Canaans, taught them a thing or two, and put up with no funny business from them.

We lost Heidi, CH Pleasant Hill Hinda M. Rosendog, CD, this year, also, Too soon, and too much. She also has a poem written by Judy to keep her warm and in touch. She played a big role in Judy's, and Amanda's, involvement in Canaans. The sight of her running around the hills of Vermont will stay in my memory forever.

*continued on next page*



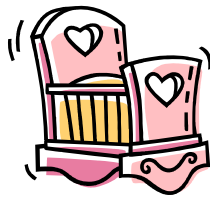
## WHELPING BOX

### PLANNED, EXPECTED & ARRIVED LITTERS

*A new advertising option for CDCA Members*

The board has approved a new feature to the Kib starting with the Winter 2012 issue.

"Whelping Box" listings will be similar to the Breeder Listings on the website, but as it will be in the Kib, will be a bit more structured to be of use to fellow breeders and exhibitors. Try as we might, we don't always know every litter each other breeder is planning! This WILL NOT replace the Breeding Listings on the website; those updates will still be coordinated by Sally.



Listings will contain kennel, sire, dam, whelping date (if already born or approximate if known), # of pups and sex (if known), one comment line and contact info.

#### Template:

*LITTER ON THE GROUND -or- PLANNED LITTER*

Kennel: *Kennel Name - State*

Sire: *sire's registered name and health clearances*

Dam: *dam's reg. name and health clearances*

Whelped/Litter Due: *if on the ground, when born; if planned, estimated due date*

Count: *if on the ground, number and sex of puppies*

Comments: *up to one sentence with information others might find useful, i.e., color ("all pups cream with white trim") if desired*

Contact: *breeder's name, phone & email*

#### DETAILS:

- Open only to current CDCA members
- Cost will be \$20 per year for up to 10 listings. This can be one issue with 10 litters (!) in it, or 5 litters listed in 2 issues, or any combo up to 10 listings within a calendar year.
- Count resets at the beginning of the calendar year whether or not you have used all 10 listings.
- Planned litters should not be listed out longer than 6 months before anticipated whelping [so if you are planning a breeding expecting your bitch will be in season in Oct., you would be able to list the breeding as of the Spring issue (deadline of May, within 6 months of Oct.)]. Planned litters where the breeding has happened but a pregnancy has not been confirmed are welcome. ♦

#### *Report of the Secretaries—continued from page 15*

The People:

Lorraine Stephens, long-time CCA/CDCA Secretary, breeder-owner-handler, will be memorialized in this issue of the Kibitzer, which she once edited.

Donna Davison's brother-in-law died suddenly on March 5, 2012. He is Jackie Davison's brother.

Ken Cabrera went through back surgery, and Carrie had difficult hand surgery. Brian Still had hand surgery. Ellen Minto spent time in the hospital considering back surgery. Pamela Rosman has been battling health issues for both herself and her father.

Renee & Evan Kent welcomed new baby Carly Navine — brother Ian seems very smitten!

Susan Tibolla Gray celebrated her mother-in-law's and my sister's, Miriam Gray's, birthday on April 20th - the same day as Amanda's! There was a great big party in Rockville, MD.

*Bryna Comsky ♦*



#### *Committee Reports—continued from page 15*

group. Notification of the mailing of the ballot to members was posted to the list as well. To stay informed and up to date on issues such as this, again, please consider joining the group if you are not already.

Lastly, if like me, you are excited to see the Kib, and receive the electronic version, the group is the fastest way to be informed it is available. As soon as the newest version is uploaded to the CDCA website, notification goes out to the yahoo group. It is via the group, restricted to current CDCA members, that the updated passwords to log on to the members section of the website are distributed.

If you have any questions or need help joining, I am always glad to help.

Amy Preston, CDCA Membership  
[RelicCanaans@yahoo.com](mailto:RelicCanaans@yahoo.com)

## OFA Test Results January 2012—April 2012

*Line in bold italics signifies the dog has a CHIC number.*

Registered Name	Registration Number	sex	OFA Test Number	OFA Test	OFA Results
BELLA-MOJO	NOREG1173301	F	CA-DM40/2F-NOPI	DEGENERATIVE MYELOPATHY	NORMAL
BLUE SKY DESERT STAR BALL OF FIRE	DN22127102	F	CA-DM37/43F-VPI	DEGENERATIVE MYELOPATHY	NORMAL
BLUE SKY DESERT STAR LUNA ECLIPSE	DN22127101	F	CA-DM36/43F-VPI	DEGENERATIVE MYELOPATHY	NORMAL
<b>BLUE SKY DESERTSTAR ORION THE HUNTER</b>	<b>DN22127103</b>	<b>M</b>	<b>CA-TH78/45M-VPI</b>	<b>THYROID</b>	<b>NORMAL</b>
CHERRYSH ABRAHAM SAMPSON'S HEAVEN	DN26192203	M		HIPS	MILD
D & J HA'ARETZ SPANKEY	DN12738804	M	CA-461G76M-VPI	HIPS	GOOD
D & J HA'ARETZ SPANKEY	DN12738804	M	CA-TH77/76M-VPI	THYROID	NORMAL
D & J HA'ARETZ SPANKEY	DN12738804	M	CA-EL129M76-VPI	ELBOW	NORMAL
D & J HA'ARETZ SPANKEY	DN12738804	M	CA-PA73/76M/P-VPI	PATELLA	NORMAL - PRACTITIONER
D&J HA'ARETZ HANNAH'S LEGACY	DN26166801	F	CA-EL128F26-VPI	ELBOW	NORMAL
D&J HA'ARETZ HANNAH'S LEGACY	DN26166801	F	CA-459G26F-VPI	HIPS	GOOD
GEMARI'S WILD ISHA	DN25423203	F	CA-366137	CERF	12
HATIKVA ALBEART EINSTEIN	DN24844502	M	CA-PA72/33M/P-VPI	PATELLA	NORMAL - PRACTITIONER
HATIKVA ALBEART EINSTEIN	DN24844502	M	CA-460F33M-VPI	HIPS	FAIR
NATURALLY NOAHS AT EASTLAND	DN10294502	M	CA-DM38/84M-VPI	DEGENERATIVE MYELOPATHY	NORMAL
PUPPY	NOREG1171761	M	CA-DM39/14M-NOPI	DEGENERATIVE MYELOPATHY	NORMAL



## AGILE CANAANS

BY ALAN GERSMAN

I was planning to write about agility venues, but Denise's (Gordon) breed article in the AKC Gazette (March 2012) was right on target. Briefly Denise discussed some of the pitfalls in training a Canaan Dog. The essence of Denise's article suggests positive training (see my article 2<sup>nd</sup> Quarter edition of KIB) and obedience training is necessary for Canaan Dogs. Her article is an excellent intro for training a Canaan Dog. Of course, as they say, the devil is in the details.

The objective in creating a training program is to develop a strong bond with your Canaan Dog. I have found that nothing beats a good bond; it brings out their loyalty and willingness to do whatever you want to do.

The details in developing a training program for Canaan Dogs such as; at what age do you start training, where do you go to learn how to train, are dog training schools setup to accommodate our breed, will the wrong training program be harmful, when a training school calls "foundation training" is that for the type of foundation necessary for a Canaan Dog, what part of the temperament is inherited and what part is learned, how easy is it to retrain, at what point does training become stress, how do you train and still deal with the stress,

Briefly, my background is doing Agility in 2 venues AKC (American Kennel Club) and USDAA (United States Dog Agility Association) and Obedience in AKC and UKC (United Kennel Club).

In addition, Isabel my first Canaan Dog earned a Novice Stock Yard Title at a local herding club.

In AKC I have put MACHs (Master Agility Champion) on 3 dogs, 2 Canaan Dogs and 1 Border Collie (BC). I have put AKC and UKC obedience titles on all my dogs. Isabel finished 18th overall at the AKC Agility Nationals in 2001 and my current Canaan Dog Minnie finished 8<sup>th</sup> overall in the 26" height class in the 2011 AKC Agility Nationals, was in the finals at the 2009 AKC Agility Invitational and has earned MACH3 in AKC.

### **WHEN TO START**

I start training CD puppies @ 7-8 weeks because at that age the puppy has just started to think and is operating on basically 100% instinct. There are a few temperament testing methods for puppies. Minnie's breeder Cathy Oskow, (<http://www.mazeltovcanaandogs.com>) used the "Monks

of New Skete" book for guidance and was happy with the results. Cathy told me at the time that the temperament testing helped in determining placement of her puppies.

As a performance person I look for a CD puppy, that is to say, 7-8 weeks old with a temperament of risk taking and game playing. Between 8 weeks and 6 months I train to somewhat overcome what will eventual be the Canaan Dog's strong instinct for survival that kicks in as the CD matures. At approximately 6 months of age the CD is now in the retraining mode after acquiring more or less 80% of what they will learn in their lifetime. Denise correctly points out in her article retraining is harder, more time consuming and somewhat stressful for the CD.

Training should be all fun and games. I practice lots of restrained recalls and races over obstacles to a prize (treats). The pup is restrained in the sense I have someone hold my puppy lightly by the flanks/front of the thighs. Then I start having the puppy do a low level jump and then run to treats, then 2 jumps, treats etc.

I start off at a very low height, because we are working on speed. I initially train in lines, boxes and zigzags, putting in left and right turns (on command) taking each stage at a time - but always done flat out on speed almost like you are racing your dog without losing the control / focus on the job in hand. CD's love to run and jump and I build on that excitement.

My goal is by 6 months my pup is so self-confident in the agility ring that no instinct will slow him down. In addition, the running and jumping is excellent for strong bone development and structure.

A good website for game ideas -- the store at <http://www.cleanrun.com>. A couple of books on games that might be useful are Pat Miller's "Play With Your Dog" and Karen London's "Play Together, Stay Together." Pat Miller has another training book "The Power of Positive Dog Training" which a number of people have recommended.

During the first 6 months I also start on the contact equipment at a low height which usually takes 1 or 2 times to show them. I gradually raise the height of the equipment -- including the teeter totter which I start as low as possible to show the movement and where to go. If you don't have and cannot obtain contact equipment there are other ways to train. I work with all obstacles except the weave poles which I introduce at approximately 12 months of age using Susan Garrett's "12 poles in 12 Days."

Everything in the above discussion can be done at home. The next KIB I'll discuss "Where to Learn to Train." Any questions or more detail contact me: [maxisone@erols.com](mailto:maxisone@erols.com).



## REMEMBERING ... LORRAINE STEPHENS

*continued from page 5*

and the Canaan Dog certainly wouldn't be an AKC breed without the dedicated record keeping of Lorraine Stephens. My sympathy to her friends and family.

- *Donna Davison*

I was privileged to become friends with Lorraine Stephens, who was secretary of the CCA (as it was then known) when I got into Canaan Dogs in 1984. Lorraine took her role as secretary very seriously and if you phoned her with regard to the club and then wanted to talk to her about her dogs, she'd asked that you phoned back as she refused to mix club 'stuff' with her personal dog 'stuff'. She and her husband, Gene, drove all the way from Oklahoma to the NY specialty, held on my property in 1987, where I got to know her better. She told me about the time she worked with Fr. Robnett whose approach to breeding Canaans was a bit random. Lorraine worked hard to keep his breeding programme more organised and helped in the placement of the puppies until she eventually started her own breeding programme.

I purchased a beautiful, white with brown patches, bitch puppy from Lorraine, Geva's Jesse of Briel, who won BOS in Puppy Sweeps and BPIS at the '88 Specialty and finished her CCA championship in just 4 shows, which made Lorraine very proud indeed. I flew to Oklahoma and travelled with Lorraine and Lee Boyd, who met up with us at Lorraine's home, to the National Specialty in Almogordo, New Mexico in 1990, where I showed a puppy bitch she bought from me, whom she called 'Shawnee', to Best Puppy in Show. We spoke often on the phone, and I remember her angst when she had to put her mother, who was suffering from Alzheimers, into a care home. I also remember her terrible grief when she lost her much-loved husband, Gene. I believe the last time I saw Lorraine was at the National in South Dakota. After moving to England I lost touch with Lorraine until December 2002 when she informed me that 'Shawnee' had died of a brain aneurism at 13 years of age. I think I heard from her only one more time, and then lost touch. I was greatly saddened to hear of her passing.

Lorraine was a one of a kind – very dedicated to her family, and very dedicated to the breed. Her integrity was unquestionable and she gave generously of her time and talents to the club. I can say she was a lovely, kind, human being and I am sure her passing was a loss to many. It's a shame that so

few of the current club members got to know Lorraine, but they should be grateful for all she did on behalf of the club and the breed.

- *Ellen Minto*

If memory serves, it all started with an English Springer Spaniel that Lorraine had finished with a CD title. She and her husband, Gene, were back from service in Guam, and had resettled in Newcastle. They had two sons, Eric and Matthew, and it was around 1970. There was a connection to Father Elmer T. Robnett, a dog man who raised and showed wire-haired fox terriers and Samoyeds at his parish kennels. He relied on parishioners to care for his dogs while he cared for their souls. It didn't seem to be an even trade-off. The care of the souls won. There was one dog person among them, not nearly enough. Around this time, the Sheaffers of Spatterdash Kennels sent dogs of their breeding to Fr. Robnett. Spatterdash Dakar, who was a litter brother to Dreidle, came to Padre's kennels near Oklahoma City. Lorraine stepped in to help, and found herself with her first Canaan dog, Padre's Obediah of Geva, "Obi" for short. In no time the Stephens family was surrounded by Canaans. They proliferated, and pretty soon, there were too many. Gene was indispensable. The only thing he didn't allow was a three-figure phone bill, as I recall. So, Lorraine added yet another responsibility, that of CCA Secretary. When Fr. Robnett was elected CCA President, Lorraine was also President without portfolio. She had become totally committed to the breed and its quest for full acceptance by the American Kennel Club.

Lorraine and family bred several litters for the breed. CCA knew when they had a talented person in their midst, and held on to her for dear life. Lorraine was a trained secretary, artist, writer (of historical romance novels) accomplished quilter, and wife and mother of a family of four. In 1985 she prepared the first CCA report to the American Kennel Club, carried to Mrs. Marianne Goldstein, project director at the time, by Margie Lachs, Barbara Burr, and Frances Beard. If someone told me that her typewriter never stopped until her resignation in 1990, I'd believe it.

Lorraine and her family hosted two national specialties for the breed in Oklahoma City in 1977 and 1984. She embraced every challenge, traveled to other nationals, and to Mexico to show off the breed. Maxwell Riddle once judged

## REMEMBERING .... LORRAINE STEPHENS

Canaans in Mexico, and later in 1985, at Riddle Field, Ohio. Her loyalty to the breed and the people who loved it was unquestioning and unconditional, and her generosity and ability to work knew no bounds. Reams of paper reveal her determination to work to get the breed recognized. Finally, she got tired and in 1990, submitted her resignation after the breed had reached acceptance to miscellaneous class.

Lorraine had two of my puppies: one was Ha'Aretz Miryam Carrie who stayed only a short time, and the other, Ha'Aretz Rashe Chavala of Geva CD, who stayed for the rest of her life, and won a place in Lorraine's heart. It is sad to say goodbye. I hope that her sons, Eric and Matthew, stay in touch with CDCA from time to time.

- *Bryna Comsky*

Lorraine Stephens was my original mentor in Canaan Dogs. In 1986 I discovered the breed in Simon & Schuster's Guide to Dogs, and looked up the club ad in Dog World. Lorraine was listed as the Canaan Club of America's secretary. I called the phone number provided and spent an hour on the phone with Lorraine. We hit it off, completing one another's sentences. Although she encouraged me to contact other breeders, I knew I wanted a dog from her, especially after I saw photos of some of her dogs. We also lived in neighboring states, so in 1988 I went down and picked up Geva's Karniela of Kansas - Keely, my first Canaan Dog, from the last litter Lorraine ever bred, as it turned out.

Lorraine convinced me to attend the 1989 CCA Specialty in Scottsdale, AZ. Keely was Best of Opposite Sex in Puppy Sweepstakes and a wonderful companion to boot - I was hooked!

Lorraine and I co-owned Keely, with the understanding that if I put a title on her, ownership reverted solely to me. When that time came, there was no reason to change as Lorraine and I were still completing one another's sentences. We co-owned Keely until that sweetheart died. When I bred Keely, Lorraine and her husband Gene paid me a visit and took home a puppy. As it turned out, Aaron was to be Lorraine's last Canaan Dog. He died at the age of 12 in 2004.

Lorraine discovered Canaan Dogs through her priest, Father Robnett in the mid-1970s. Many of her early dogs were acquired from him. Later she obtained an influential

brood bitch, Terramara's Dahlia of Geva, from Terry Bagley. Lorraine also put an obedience title on Ha'Aretz Rashe Chavala of Geva, whom she got from Bryna Comsky.

In addition to Canaan Dogs, Lorraine had two other passions, quilting and writing. She alternated which of these interests was in ascendancy. After she stopped breeding Canaan Dogs, she began writing historical romance novels and got into e-publishing when it was in its infancy. When she moved to an assisted living facility a few years before her death, she resumed quilting and taught this art to others.

Lorraine was a generous, talented individual who put those traits to work in service to the Club and in promotion of the Canaan Dog. I will always be grateful to her for mentoring me, entrusting me with Keely, and for giving Aaron a good home. I was fortunate to count her as a friend. Always brutally honest about her own dogs, it will be Lorraine's voice that I hear in my head at ringside, providing commentary about on what's going on, both inside the ring and out.

- *Lee Boyd*

When I woke this morning, knowing I would be writing about her, I could hear Lorraine's Midwest tones in my mind as she shared the minutes of a Canaan Club of America at one of our National Specialty meetings years ago. She had a good voice, an upbeat personality, and was a go-to person who got whatever job needed doing: done. You knew you could count on Lorraine. Years spent as the CCA / CDCA Secretary made Lorraine the first contact the public had with our Club, and she handled the job with aplomb and grace.

Lorraine Stephens loved Canaan Dogs. She and her husband Gene were pioneers in the breed here in the US, producing several litters under the Geva kennel name. 14 of their dogs were registered with the AKC as foundation stock from at least five litters. The two I remember best were Chava (Ha'Aretz Rashe Chavala of Geva, CCA CD) and Jessie (CCA Ch Geva's Jessie of Briel). The latter was bred by Lorraine and co-owned and loved by her good friend, Lee Boyd of Kansas Canaan Dogs; the former was a very special dog to her mistress - and a Canaan pioneer in the obedience ring.

In the early 1970s Lorraine participated occasionally in FCI shows in Mexico, working with Marge Rinehart and Fran

*continued from previous page*

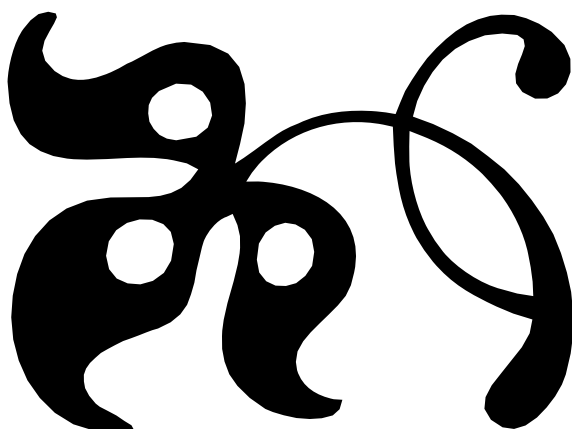
ces Beard to present our dogs to the international show world. Twice she took on the stressful role of CCA National Specialty Chair, in 1977 and 1984 (along with Josanna Taylor and Fr. Robnett). I met her for the first time at either the 1983 or 1984 Specialty; she was friendly and welcoming to this new Canaan Dog owner.

The CCA published a beautiful color booklet in 1989 created by Lorraine, as Secretary, featuring photo covers of CCA Ch. Joshua of Grey Mesa and CCA Ch. Spatterdash Dreidle, CCA TD on the front, and Spatterdash Yawvin on the rear cover. Those color pictures caught the eye and did much to bring positive attention to our dogs.

In her retirement years Lorraine turned to quilting and writing, becoming quite active in both hobbies. She organized and traveled extensively to quilt shows, and I believe was getting involved in teaching this basic Americana skill again not long before passing. She'd become a romance writer and editor for Starlight Writer Publications in the 1980s / 90s and was known for helping new authors find their niche online.

Lorraine impacted many of us as Canaan Dog owners and breeders, and as a caring, thoughtful, practical, helpful member of both the CCA/CDCA and the ICDCA. I miss her and Gene - they were quite the pair, and I cherished their friendship.

- Joan Capaiu Greene



## NEW TABS ON CDCA.ORG

There are two new(-ish) tabs at the top of the CDCA homepage for The Kib and Members.



<http://cdca.org/kibitzer.html>

Current Kibitzer issues are available for everyone given the Kib ID and password: members, judges, and non-club members who buy subscriptions. The public can download 2003 through 2010 issues for free without knowing the logon information.

### Kibitzer logon info:

ID: kibitzer (case sensitive)  
Password: eKib2011 (case sensitive)



<http://cdca.org/members.html>

The Members section currently has CDCA membership information, our Code of Ethics, various applications and forms, AKC Delegate reports and Kibitzer links.

### Member logon info:

ID: CDCA (case sensitive)  
Password: CanaanDogRule (case sensitive)

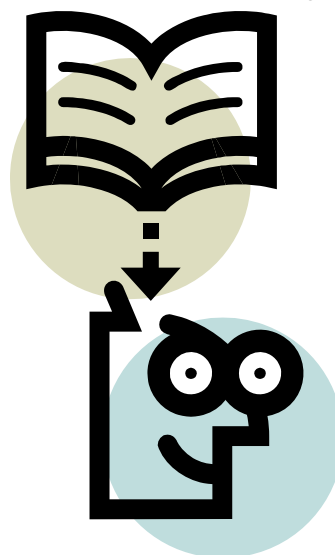
## DWAA WRITING CONTEST

The Dog Writers Association of America announces its annual writing contest. Submissions are accepted beginning June 1, 2012 through August 31, 2012.

The contest is open to all writers, editors, publishers, photographers, artists and others whose work falls into the designated competition categories. Entrants do not have to be DWAA members.

Work must be original and first published during the competition period from September 1, 2011 through August 31, 2012.

Visit the DWAA website for more information and the categories for this year's contest. [www.DWAA.org](http://www.DWAA.org)





## Canaan Dog Club of America (CDCA)

www.cdca.org

### Officers & Directors

President	Amanda Pough bandersnatchbtd@yahoo.com
Vice President	Julie Haddy pawslover@gmail.com
Recording Secretary	Joan Capaiu Greene farsight.canaani@gmail.com
Corresponding Secretary	Bryna Comsky BComsky@aol.com
Treasurer	Christina Miller Cdca_treasurer@bellsouth.net
Director East	Renee' Kent renegadeecd@cox.net
Director West	Ken Cabrera geckogungear@yahoo.com
Director Central	Donna Davison canaandog97@yahoo.com
Director	Annette Israel eastlandcanaans@gmail.com

### Chairs

Agility	Dan & Julie Haddy
AKC Delegate	Pamela Stacey Rosman
AKC Gazette	Denise Gordon
Awards	Denise Gordon
Breeder Referral	Sally Armstrong
Health	Donna Davison & Amy Preston
Herding	Denise Gordon
Judges Education	Christina Miller
Legislation	N B Woolf & J C Greene
Publicity & Public Ed	B Comsky
Membership	Amy Preston
Standard Revisit	Annette Israel
Versatility	Denise Gordon
Ways & Means	Julie Haddy
Web	John Relph & J C Greene

The views expressed in this newsletter are not necessarily the views of the CDCA. This newsletter is an open forum and all comments and contributions are welcome, but subject to the editor's discretion. Content that is deemed inappropriate or libelous by the editor will not be published.

Any veterinary advice distributed in this newsletter should always be discussed with your veterinarian prior to implementation. The intent of this newsletter is to be informative and becomes a historical document that reflects the breed and the CDCA.

## The Canaan Kibitzer

Quarterly Newsletter of the  
Canaan Dog Club of America

**Editor:** Amanda Pough

**Contributing Writers & Advertisers:** AKC, L Boyd, C Cabrera, J Capaiu Greene, B Comsky, D Davison, DWAA, A Gersman, J Haddy, J Larkin, C Miller, E Minto, OFA, S Paige, A Pough, A Preston, R Reams, J M Rosenthal, E Stephens.

**Publishing Dates:** February 15, May 15, August 15, November 15

**Content & Advertising Deadlines:** February 1, May 1, August 1, November 1

**Reprint Policy:** Please credit *The Canaan Kibitzer* and an original source by-line (if any). Send a copy of the reprint to Amanda Pough, 132 Genung Circle, Ithaca NY 14850

### Submission Guidelines:

**Show reports:** Please keep all-breed show reports to one page; or less if you are including photographs.

**Special events:** Specialties or supported entry shows, will be allotted more space and handled on a case by case basis. If you would like to cover a special event, please inform the Editor in advance.

**Photos:** Always welcome, even without an article. High resolution digital photos are preferred.

**Ads:** Printed as-is, so please proof them carefully.

**Rates:** All ads should be in electronic format. Photos must be 300dpi or greater.

Color Sponsorship	US\$600.00
(both covers plus 4 page spread)	
Front Cover	US\$ 50.00
Rear Cover	US\$ 40.00
Full Page	US\$ 30.00
Half Page	US\$ 15.00
Quarter Page	US\$ 7.50
"Brag Box" (no photo)	FREE
Whelping Box	US \$ 20.00/yr
(up to 10 listings)	

All ads must be paid in advance. Make checks/money orders payable to CDCA. Send fees to Christina Miller, CDCA Treasurer, 3220 Gees Mill Road, Conyers, GA 30013. Email creative to bandersnatchbtd@yahoo.com

Submissions are due midnight 2/1, 5/1, 8/1, 11/1. Special exceptions may be arranged as needed. Submissions that are not time-sensitive may be held for future issues at the editor's discretion. 1 page = 500 words, 1/2 page = 250 words.

## PHOTOS FROM THE 2011 NYC MEET THE BREEDS

