



TEAM **GEAR**



[www.admiralsports.com.au](http://www.admiralsports.com.au) **CATALOGUE 2023**



# TABLE OF CONTENTS

	PAGE		PAGE		PAGE
Time Line	4-5	<b>Outerwear</b>	37	<b>Quality Footballs</b>	57
Look Like Winner	6	Crew Training Tech Hoodie	38	Ball Grade, Admiralid & Tech Information	58-62
Quality for all Guaranteed	7	Crew Training Pullover	39	Orion Match Ball	63
<b>Ready 2 Go</b>		Variante Jacket	40	Force Training Ball	64
Derby Jersey	8-9	Variante Hoodie	41	Epic Training Ball	64
Verso Reversible	10-11	Whistler Rain Track Jacket	42	Mach 1 Futsal Match Ball	65
Cup Jersey	12-13	Maxum Pant	43	Nero Streetball	65
Performance Jersey	14-15	Omega Pant	44		
United Jersey	16-17	Alpha Full Zip Jacket	45	<b>Customer Service</b>	66-67
Town Jersey	18-19	Variante Pant	46		
Forza Shorts – Mens	20				
Forza Shorts – Womens	21	<b>Accessories</b>	47		
Roma Short	22	Auto Flow Water Bottle	48		
Vapor Short	23	Ultimo Backpack	49		
Vapor Short – Womens	24	Pro Drawstring Bag	50		
Premier Sock	25	Primo Drawstring Bag	50		
Tourney II Sock	26	Game Day Duffle Bag	51		
Jersey	27	Equipment Accessory & Net Bag	51		
		Dynamic Duffle Bag	51		
<b>ADMIRALid.</b>	28				
<b>Goalkeeper</b>	29	<b>Referee</b>	52		
Solo GK Jersey	30	Pro Referee Jersey SS & LS	53		
Pure GK Short	31	Governor Pro Stretch Referee Jersey SS	54		
TC ¾ GK Pant	32	Governor Pro Stretch Referee Jersey LS	55		
TC GK Pant	33	Citation Referee Short	56		
Premier Finger Save	34				
Pro	35				
Match	36				





1914

### Admiral is Established

Christopher Cook & Harold Hurst began manufacturing hosiery in 1908 under the name Cook & Hurst Ltd based in Leicester, creating the Admiral brand in 1914. The Trademark was then registered in 1922 after having supplied the Royal Navy with rugby shirts. The Admiral "rank" the logo of a Royal Navy Admiral.

1975

### Dominating Football

Admiral continued to sign up some of the largest football clubs in the world adding the likes of Manchester United F.C., Tottenham Hotspur F.C., West Ham United F.C., Eintracht Frankfurt and the Saudi Arabia National Team. In 1975 Manchester United had FA Cup success in a Admiral kit.

1973

### First Football Sponsorship

The First Real Football Club Sponsorship, Admiral pioneered the replica kit market. Admiral signed a deal with League Champions Leeds United to make the first branded team kit and replica merchandise.

1978

### NASL Years

Further afield, Admiral had also grown to produce kits for NASL teams in the US during the late 70's and had a replica licensing deal with all clubs, including the New York Cosmos.



**FIRST IN FOOTBALL**  
SINCE 1914



1966

### England Wins WC

It wasn't until England's 1966 World Cup success that they began to manufacture sportswear.

1974

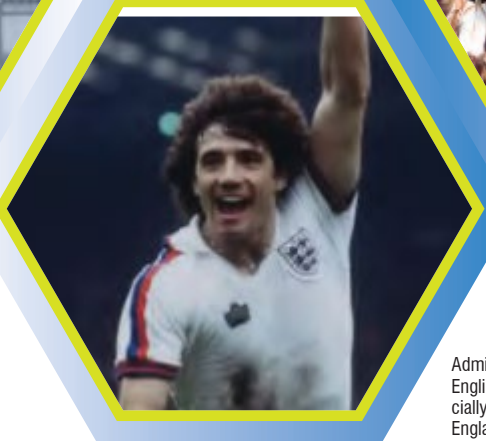
### The England Job

Admiral didn't stop there, they signed a deal with the English national team and produced the first commercially available England football shirt. The new Admiral England kit was worn in the 2-0 win over Czechoslovakia.

1976

### FA Cup Final

1976 saw Southampton F.C. play Manchester United F.C. in an all Admiral FA Cup final. Admiral teams continued to reach the final of 1977, 1978, 1980.





1982

**England Product WC Final**

Admiral continued as the official kit supplier to the England National team into the early 80's. The team wore the now famous Admiral white home and red away strip in the 1982 World Cup Finals held in Spain.



2005

**England Win the Ashes**

The England cricket team managed one of the biggest sporting conquests winning a thrilling Ashes series in 2005 after 18 years of hurt.



1991

**League Champions**

Leeds United won their third, First Division Football League title in the 1991-92 season. Admiral continued to sponsor champions across the world including Leeds United (First Division Champions 1991/ 92) and Dynamo Kyiv (USSR Champions).



2014

**100th Anniversary**

Will see Admiral celebrating its 100th Anniversary. To mark of Admiral from Japan through to the USA, in a year when football's global elite will meet in Brazil! Celebrate the 100th Anniversary with its net year; celebrate 100 sporting years of one Britain's favourite sporting icons!



2018

**Represent Admiral**

Admiral have a collaboration with the fashion brand REPRESENT. These images are from the 2018 Milan Fashion Show. The product is available in the UK at Selfridges, in USA at Nordstrom and other high end stores.



2015

**Champions Again**

Admiral found success on the field once again across the world. Having reignited the connection between Wimbledon AFC and Admiral the club instantly saw success reaching League one for the first time in the club history.



2011

**New Factory Launch**

In January 2011, Admiral opened its own purpose built factory to provide our customers in North America with custom designed sports apparel and accessories.







## LOOK LIKE WINNERS PLAY LIKE CHAMPIONS

Admiral invented replica kits for English soccer premier teams; Manchester United, Leeds United, England and most of the original North American Soccer League teams. We supplied the British Lions Rugby teams and the England, South African, Canada and West Indies cricket teams. We introduced unique designs, alternate kits, manufacturing and club logos, poly cotton materials to make kits lighter and drier, developed kits with stripes, collars and cuffs, where Admiral led other brands followed.

Today when you buy Admiral teamwear you get the same high performance apparel and accessories developed for our pro teams and trusted by thousands of youth clubs, schools and sports organizations around the USA & Canada.

1. Oldest soccer brand in the world.
2. Better quality control & availability because we own our factory.
3. Unlimited designs, colors & logo options. No end of life or minimum quantity issues.
4. Custom designed & made to order kits. Uniquely brand your teams.
5. Raise funds for your teams with custom branded soccer balls.
6. Quality coaches accessories.
7. Custom club branded spirit and fanwear.





## QUALITY FOR ALL GUARANTEED



**Performance guarantee:**  
We are proud to stand behind every product we make with our performance guarantee. If you're not completely satisfied with the performance of our product we will replace it, no fuss, no worries.



**Our ready to go guarantee means you get your product quicker:** We maintain a large stock of core products and should our stock position be low on certain items we can manufacture within a short time to fill your orders. This means that you can always buy with confidence.



**2 Day shipping:**  
We ship with UPS expedited shipping to ensure you receive your order within 48 hours of the ship date.

## ADMIRAL FIT'S



### COMPRESSION



Ultra-slim fit that enhances flexibility and athletic output.



### REGULAR UNISEX



A regular fit. Shaped for an athlete. Comfortable athletic cut that can be worn by men and women.



### WOMEN'S SHAPE



A better fit for Women. We use the unisex pattern and then cut the garment for a women's shape.



## ADMIRAL TECHNICAL FEATURES



JTP JTP

TAG FREE

TRANSFER NECK LABELS FOR LESS SKIN IRRITATION



LOCK IN COLORS WITH POSICHARGE

FOR BLEED-RESISTANCE AND OPTIMAL PRINTING



THERMIC REFLECTION

REFLECT BODY HEAT TO HELP STAY DRY TO ENHANCE WARMTH



WATER-RESISTANT

TO HELP STAY DRY IN RAIN



MOISTURE MANAGEMENT

ADMIRAL'S VAPOR DRAW TECHNOLOGY KEEPS YOU COOL AND DRY.



SNAG-RESISTANT

FOR A DURABLE, SMOOTH LOOK WEAR AFTER WEAR



VENTILATION

FOR AIR CIRCULATION

## IN-STOCK & MADE TO ORDER



These are our inline items which we keep stock of in our warehouse and



A tailored solution. Choose from hundreds of designs, add your own colors, logos and numbers to the designs and have YOUR KIT YOUR WAY!

Contrast shoulder inserts

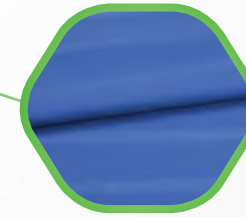
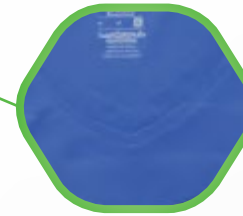


Wider sleeve trim

## WE BELIEVE IN UNITY

Admiral strengthens and supports your team by fusing game changing performance technologies with the right fabrics, designs, colors and sizes at an outstanding value.

Modern v-neck



Horizontal embossed front



new

## Derby Premium Package



Available in 17 colors



# #1016PKG Derby Premium Package

The Derby Jersey is an ultra modern V-Neck, VaporDraw fabric releases heat and sweat, diagonal embossed front, wider sleeve trim. Depending upon the color of the jersey, Admiral will add either the 2 color roma short or the 1 color vapor short to the package. The tourney sock rounds out this premium package.

## Package Includes:

- Derby Jersey
- Vapor or Roma Short
- Tourney Socks

Sizes YXS - AXXL  
Women's shape available



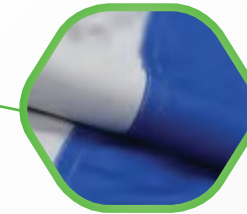
Contrasting double  
needle construction



Crew neck



Contrasting  
side panel



Contrasting  
binding at hem



## Verso Reversible



Available in 4 reversible colors



### REVERSE SIDE



## #1020

### Verso Reversible Package

Crew neck, reversible shirt, color blocking on both sides, very comfortable.

### Package Includes:

- Verso Jersey
- Vapor Short
- Tourney Socks

Sizes YXS - AXXL  
Women's shape available

Vapor Short



Verso Reversible



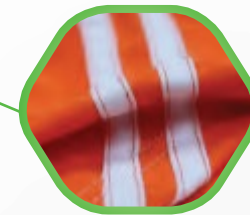
Tourney Socks



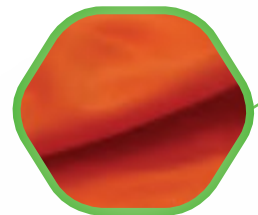
Crew neck with  
contrasting overlays



Contrasting overlays  
at shoulder



Contrasting  
overlays at hem



VaporDraw wicks  
moisture

Like your team spirit, colors and logos should never fade. Trust Admiral logos and numbers for bleed resistant color and crisp clear logos that last



## Cup Jersey



Available in 21 colors



# #1021 Cup Jersey Package

Crew neck, VaporDraw wicks moisture, contrasting overlays at shoulder and hem.

## Package Includes:

- Cup Jersey
- Vapor Short
- Tourney Socks

Sizes YXS - AXXL  
Women's shape available





Short sleeve

Crew neck

VaporDraw wicks moisture



## Performance Jersey

Available in 15 colors



## #1022SS Performance Jersey SS

Crew neck, short sleeve performance shirt, VaporDraw wicks moisture, Solid colors very comfortable.

## #1022LS Performance Jersey LS

Crew neck, long sleeve performance shirt, VaporDraw wicks moisture, Solid colors very comfortable.



Available in silver & white

## Package Includes:

- Performance Jersey SS
- Vapor Short
- Tourney Socks

Sizes YXS - AXXL, Women's shape available

Performance Jersey

Vapor Short

Tourney Socks





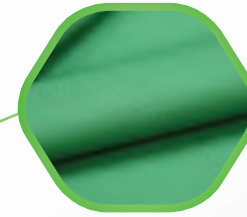
Sublimated front panel



Crossover crew neck



Sleeve Trim



VaporDraw wicks moisture



## United Jersey

Available in 16 colors



# #1023 United Jersey Package

Crossover crew neck, VaporDraw wicks moisture, Sublimated front panel allows you to add a full color sublimated club logo, soft and colorful. Admiral will add 1 color Vapor short and the Tourney sock to round out this package.

## Package Includes:

- United Jersey
- Vapor Short
- Tourney Socks

Sizes YXS - AXXL  
Women's shape available





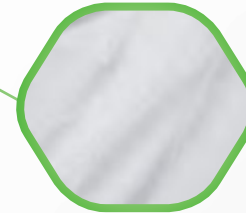
2 Color ribbed crew neck.



Sleeve trim



Contrast shoulder Insert



Diagonal embossed front.



## Town Jersey

Available in 21 colors



# #1024 Town Jersey Package

2 color ribbed crew neck.  
Horizontal embossed front.  
Contrast shoulder insert  
and sleeve trim. VaporDraw fabric.

## Package Includes:

- Town Jersey
- Vapor Short
- Tournery Socks

Sizes YXS - AXXL  
Women's shape available





# #2026

## Forza Short - Men's

Constructed with all the key qualities that go into the highest quality professional shorts.



SIZES / COLORS  
(YXS,YS,YM,YL,AS,AM,AL,  
AXL,AXXL,AXXXL)



WHWH



NAWH



ROWH



BLWH

# #2027

## Forza Women's Short

A women's cut style that features a very athletic female design along with our proven women's fit construction.



SIZES / COLORS  
(WXS, WS, WM, WL, WXL, WXXL)



WHWH



NAWH



ROWH



BLWH



# #2002

## Roma Short

new

A premium players short, fantastic fit, mid length, VaporDraw fabric, contrasting side insert, covered waistband, matching flat draw cord. Men's & Women's fit & sizes available.



SIZES / COLORS  
(YXS,YS,YM,YL,S,M,L,XL,XXL,XXXL)



# #2000 Vapor Short

A slightly longer VaporDraw performance short, overlock stitching on leg and side seam for added strength, covered waistband, matching flat draw cord.

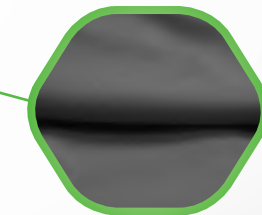
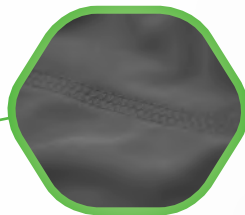


SIZES / COLORS  
(YXS,YS,YM,YL,S,M,L,XL,XXL,XXXL)



Covered waistband

Overlock stitching on leg and side



VaporDraw fabric



# #2000W

## Women's Vapor Short

A slightly longer Womens Vapordraw performance short, overlock stitching on leg and side seam for added strength, covered waistband, matching flat draw cord

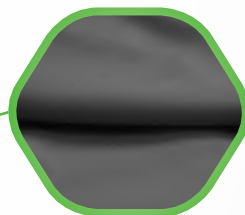
Colors available in Black & Navy



SIZES / COLORS  
(WXS, WS, WM,  
WL, WXL, WXXL)

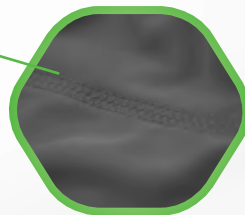


Covered waistband



VaporDraw fabric

Overlock stitching on leg and side



BL



NA



#3990 **new**

# Premier Sock

The highest quality football sock available, a true professional sock. Over knee length, longer turn down, padded foot, ribbed articulated ankle and arch support.

SIZES / COLORS  
(JR, YTH, ADT)



Longer turn down



Padded foot

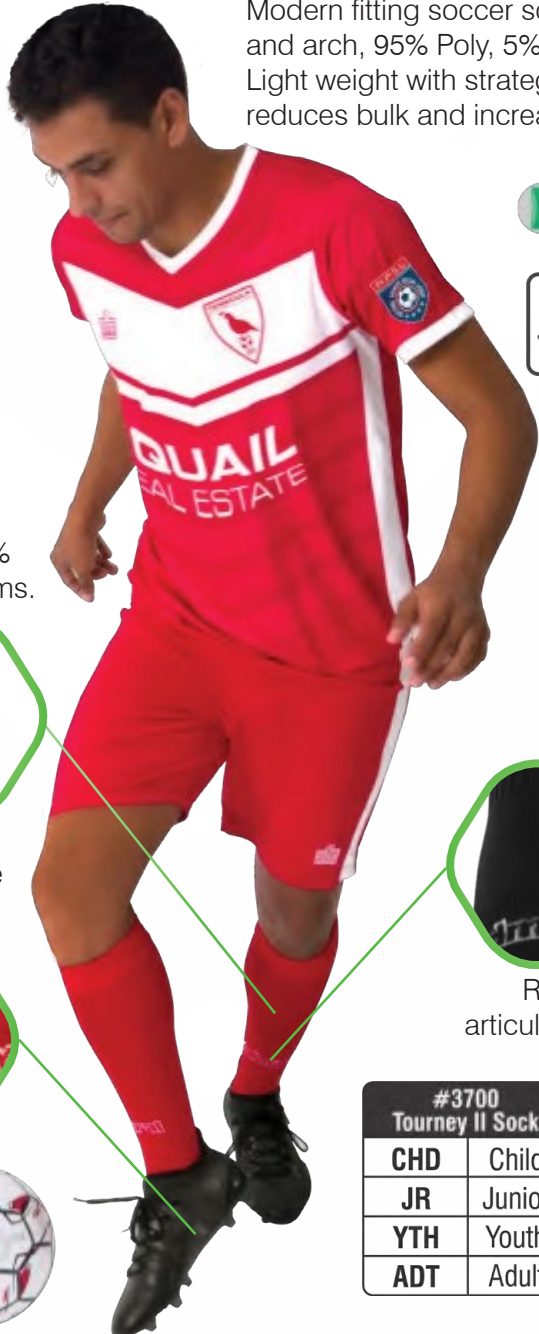
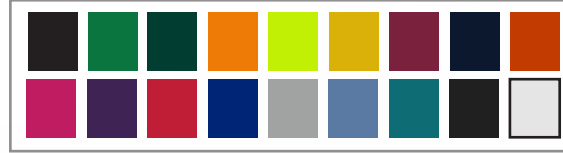
#3990 Premier Sock		Shoe Size
JR	Junior	5-7
YTH	Youth	6-8
ADT	Adult	8-12

**#3700** new

## Tourney II Sock

Modern fitting soccer sock, articulated ankle and arch, 95% Poly, 5% Spandex, 80gms. Light weight with strategic cushion which reduces bulk and increases flexibility.

SIZES / COLORS (CHD, JR, YTH, ADT)



95% Poly, 5% spandex, 80gms.



Articulated ankle and arch



Ribbed articulated ankle



In-Stock



Coming Fall 2019



#3700 Tourney II Sock		Shoe Size
CHD	Child	8-12 T
JR	Junior	5-7
YTH	Youth	6-8
ADT	Adult	8-12

# Jersey



**#1031**

## **UNIVERSITY Jersey**

New sublimated traditional Vapordraw collegiate colour blocked design.



**#1030**

## **ANCASTER Jersey**

A new gradated design, vapordraw fabric, digital sublimation, self-collar.



**#1032**

## **ACTON Jersey**

New version of iconic premier league design. Fully sublimated. Vapordraw.





# ***YOUR KIT YOUR WAY***

***Customize your kit by  
using our YKYW builder***

**[www.admiralsports.com.au/admiralid](http://www.admiralsports.com.au/admiralid)**

- Powerful 3D design tool brings your design to life.
- ID allows you to get exactly what YOU design. No surprises.
- Your design goes directly to print increasing efficiency.
- ID's efficiency allows for decreased costs that are passed onto to you.
- ID decreases turnaround times.





# GOALKEEPER



# #1811 Solo GK Jersey

A quality goalkeepers jersey, VaporDraw fabric, embossed front panel, padded elbows, contrasting shoulder panels.



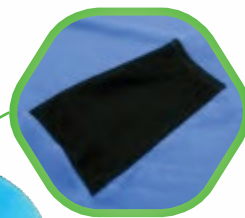
SIZES / COLORS  
(YM, YL, S, M, L, XL, XXL, 3XL)



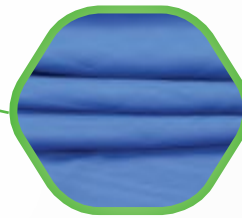
Crew neck t-shirt



Contrasting shoulder panels



VaporDraw fabric



Padded elbows



Contrasting overlays at hem



Goalkeeper



# #2584

## Pure GK Short

A goal keepers short, this GK short coordinates with most goalkeeper shirts, solid colors, longer length, padded hips, wider covered waistband with matching flat drawcord.



SIZES / COLORS  
(YXS,YS,YM,YL,S,M,L,XL,  
XXL,XXXL)

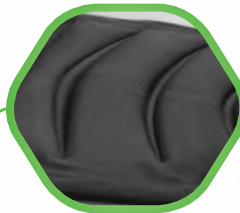


# #2591 TC 3/4 GK Pant

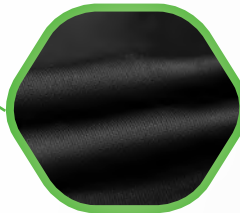
Polyester PK 3/4 GK pant, sculpted hip padding, durable fabric.



Covered waistband



Sculpted hip padding



VaporDraw fabric

SIZES / COLORS  
(AXS, AS, AM, AL, AL, AXL, AXXL,)

BL



Goalkeeper

# #2592 TC GK Pant

Polyester full GK pant, sculpted hip padding.



SIZES / COLOR  
(AXS,AS,AM,AL,AL,AXL,AXXL)



BL





# #0507

## Premier Finger Save

Flat Finger with finger save stays, sizes 3 to 9, 3mm natural latex palm, mesh gusset, PVC foam strap with velcro closure on wrist.

SIZES / COLORS  
(G3,G4,G5,G6,G7,G8,  
G9,G10,G11,G12)



Goalkeeper

# #0530 Pro

Roll finer, sizes 8 - 11, 4mm giga grip latex palm, 3,5mm german latex with rubber punch gel on backhand, 3D mesh gusset, wide wrist strap with Velcro closure and built in window. to print a name on the wide latex strap. Provides optimum contact with the ball for superb grip in dry & wet weather

SIZES / COLORS  
(G8,G9,G10,G11)



Goalkeeper



# #0520

## Match

Hybrid cut, sizes 7 to 11, 4mm super softy german latex palm, neoprene with injected rubber gel for backhand, mesh gusset, double elastic wrap on wrist with Velcro closure.

SIZES / COLORS  
(G7,G8,G9,G10,G11)







OUTERWEAR

# #0709

**new**

## Crew Training Tech Hoodie

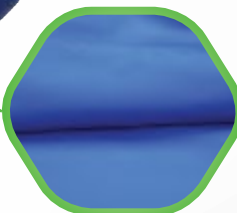
Hoodie, 100% french terry polyester, technical, a classic with new technical features, contrasting 2 by 1 rib inserts.



SIZES / COLORS  
(YM, YL, S, M, L, XL, XXL, 3XL)



Contrasting overlays at hem



100% french terry polyester



# #0710

## Crew Training Pullover

Crew neck, pullover, 100% french terry polyester, technical, a classic crew with new technical features, contrasting 2 by 1 rib inserts.



SIZES / COLORS  
(YM, YL, S, M, L, XL, XXL, 3XL)



NA

BLRO

BLRE

Contrasting overlays at hem



100% french terry polyester



Outerwear



# #0895

## Variante Jacket

Full zip jacket, European product, Fitted athletic design that contours to the body ensuring mobility and comfort, 220gm 100% polyester French terry, Ribbed 1x1 Poly cuff, woven Admiral taping on arms.



SIZES / COLOR  
(M, L, XL, XXL, XXXL)



Outerwear

# #0896

## Variante Hoodie

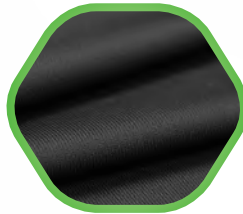
Full zip jacket, European product!, Fits smaller than normal, 220gm 100% polyester French terry, Ribbed 1x1 Poly cuff, woven admiral tapping on arms.



SIZES / COLOR  
(XXS,YS,YM,YL,S,L,M,XL,  
XXL,XXL)



220gm 100%  
polyester french  
terry



Woven Admiral  
taping arms.



BL



Full zip



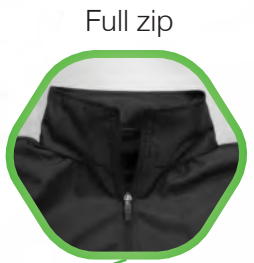
# #0853

## Whistler Rain Track Jacket

Mid weight, 2 layer modern rain jacket, woven polyester with 2000mm PU coat, vented front, hooded.



SIZES / COLORS  
(XXS,YS,YM,YL,S,L,M,XL,XXL,XXL)



Woven polyester with 2000mm PU coat



Zippered pockets



Available in black and navy



# #0819

## Maxum Pant

Mid weight polyester pique fabric, Training and travel pant, zippered pockets, tapered leg for training, 9" zippered leg opening.



SIZES / COLORS  
(XXS,YS,YM,YL,S,L,M,XL,XXL,XXXL)



BL

RO



# #0807 Omega Pant

Euro style, brushed french terry, stylish cut, zippered pockets, wide elastic cuffs, zippered leg opening.



SIZES / COLORS  
(XXS,YS,YM,YL,S,L,M,XL,XXL,XXL)



Zippered leg opening.

Outerwear

# #0808

## Alpha Full Zip Jacket

Our best track jacket, brushed French terry, color blocking in shoulder and one arm, stylish cut, zippered pockets, wide elastic waist.



SIZES / COLORS  
(XXS,YS,YM,YL,S,L,M,XL,XXL,XXXL)



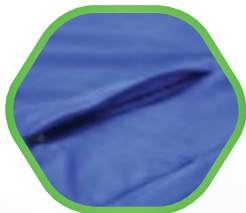
Color blocking  
in shoulder  
and one arm



Full zip



Pocket with zip



Wide elastic



ROBL



NAWH



BLWH



WHBL



REBL







# #0897 Variante Pant

European product, Fitted athletic design that contours to the body ensuring mobility and comfort, 220gm 100% polyester French terry, Ribbed 1x1 poly cuff, zippered leg and back pocket, woven Admiral taping on leg.



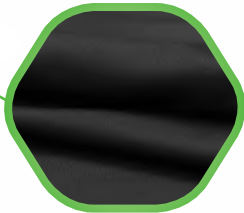
SIZES / COLORS  
(S,M,L,XL,XXL,XXXL)



Zippered Leg and back pocket



220gm 100% polyester french terry



Woven Admiral taping on leg.



WHBL



BL



Outerwear



# ACCESSORIES



**#0249**

**new**

## **Auto Flow Water Bottle**

Newer technology, auto flow water bottle, 1 liter, ABS, spout opens and closes automatically as bottle is squeezed.



# GEAR UP LIKE A PRO

#0941

## Ultimo Backpack

20"x13"x7", Large main compartment, Ballistic 1680D Polyester body, Polyester ripstop front that is easy to transfer club logos onto, ball and or a wet & dry pocket, upgraded zipper pulls with toggles, extra padding on straps on back of backpack, laptop sleeve built in, media pocket with built in opening for earbuds.



COLORS



# Bags



## #0937 Primo Drawstring Bag 15.5 "x 18"

15.5 "x 18". All-purpose small carry all for individual players, back zippered pocket, reinforced corners.

## #0927 Pro Drawstring Bag 15.5"x18"

15.5"x18", All purpose small carry-all for individual players, wider web straps, back zippered pocket, great on and off the field.





#0904

**Game Day Duffel Bag**

Duffel style carry bag with contrasting panels in three colour options.

#0934

**Equipment Accessory & Goal Net Bag**

31"x16"x16", Large, great all purpose accessory bag for balls, uniforms, holds one pair of full sized goal nets.



#0930

**Dynamic Duffel Bag**

600D Duffel Bag, shoulder strap, contrasting piping inserts in two colour options.





# REFEREE

# #1544

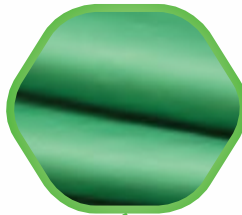
## Pro Referee Jersey

Sublimated short sleeved stripe shirt features VAPORLITE Fabric for ultimate performance and comfort, two large chest pockets with Velcro closure flaps, distinctive two button neck placket, black collar with sewn in mylar collar stays, Sewn on circular patch for badge.

Black collar with sewn in mylar collar stays



VAPORLITE Fabric



Two large chest pockets with Velcro closure flaps



SIZES / COLORS  
(YM, YL, S, M, L, XL, XXL, XXXL)



SIZES / COLORS  
(YM, YL, S, M, L, XL, XXL, XXXL)





# #1546

## Governor Pro Stretch Referee Jersey-SS

Short sleeve International quality, Pro fit stretch poly/spandex, professional pocket construction, over locked seams, stretch air mesh inserts & includes round hook and loop patch.



SIZES / COLORS  
(YM, YL, S, M, L, XL, XXL, XXXL)



Three piece tailored collar



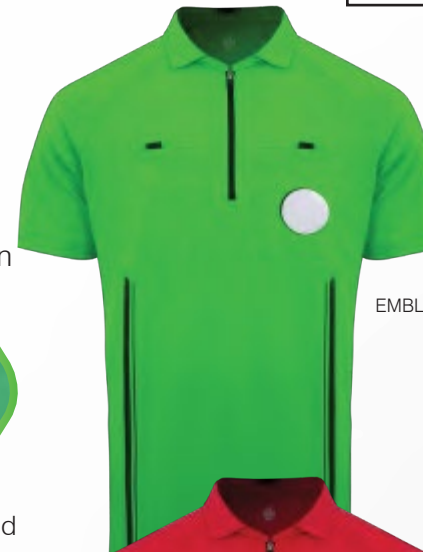
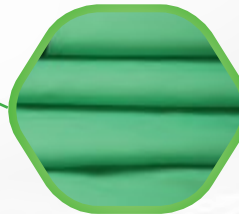
Professional pocket construction



Includes round hook and loop patch



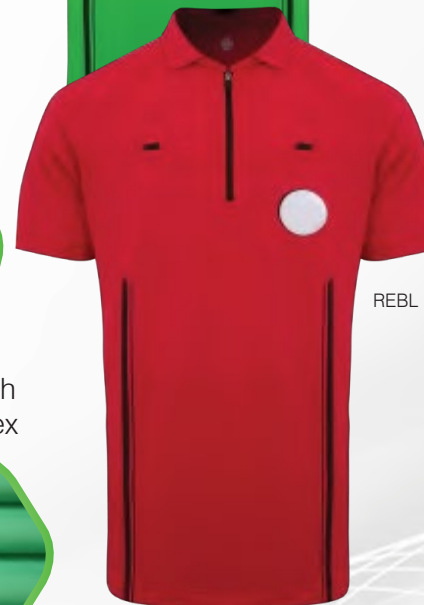
Pro fit stretch poly/spandex



EMBL



GLBL



REBL



Referee



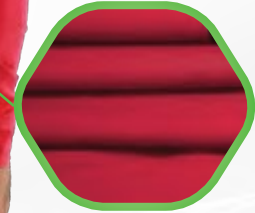
# #1547

## Governor Pro Stretch Referee-LS

Long sleeve International quality, Pro fit stretch poly/spandex, professional pocket construction, over locked seams, stretch air mesh inserts & includes round hook and loop patch.



SIZES / COLORS  
(YM, YL, S, M, L, XL, XXL, XXXL)



# #2503

## Citation Referee Short

A professional referee short, Poly stretch, Lined, Front pockets, Back plaquet with Velcro closure.



SIZES / COLORS  
(YM, YL, S, M, L, XL, XXL, XXXL)



BL



NA



Referee



# Quality Footballs

CUSTOMIZE IT  
YOUR BALL  
YOUR WAY



# Ball Grade

Admiral uses unique symbols to point our customers in the right direction. The symbols will remove much of the confusion around ball description that make it difficult to understand quality versus price. Overall, we created this rating system to simplify the process of choosing a ball that is right for you.

## Training Balls Grade

- Produced in a large variety of materials.
- Price oriented for youth, camp, practice and recreational play.
- The quality and price of a training ball increases for better skill levels and adults.
- Used by coaches for all age groups and all standards Training balls are by far the most difficult category of soccer ball to define.

Training balls are offered in a very large variety of qualities that range from lower priced balls for soccer camps, youth and recreational play right up to training balls for the top players in the game today. It is important to select the right quality for your level of play. A word of advice, price is not always the best way to determine quality. Available in sizes 3, 4 and 5.

## Match Balls Grade

- Developed for top players.
- Approved for use at the highest levels of the game.
- Produced for pure performance to exacting specifications for the greatest accuracy, speed and control.

The best quality outdoor balls will meet and exceed all minimum technical specifications and standards for the absolute highest levels of match play. Match balls are the most expensive type of ball since they are produced from the best materials and adhere to strict design and testing parameters. Available in size 4 & 5 depending up your level of play.

## Street Balls Grade

- Developed for play on hard rough surfaces like the street.
- Sometimes referred to as a freestyle ball.
- Produced with materials that promote grip and are very durable to withstand play on rough surfaces.

Proper street balls are made from durable materials to withstand the demands of playing on gravel or concrete. They materials are often designed to help the “street artist” maintain close control of the ball. Many suppliers claim to produce actual street balls but they are usually no more than normal soccer balls. Available in size 5 only.

## Futsal Balls Grade

- A more recognized form of indoor soccer today.
- Specially engineered for indoor and hard flat surfaces.
- Futsal balls are produced with bladders that have been filled to minimize bounce on hard surfaces.

Futsal is a format of five-a-side football that is played extensively throughout the world. The term ‘Futsal’ is an abbreviation of the Portuguese ‘futebol de salão’ or the Spanish ‘futbol sala’, both of which translated literally mean ‘indoor football’. It is played on a pitch approximately the size of a basketball or netball court with a ball which is smaller and heavier than the outdoor football and has a reduced bounce. The ball forces a player to use their skill rather than the ball’s bounce to propel it. As a small sided game, players are constantly placed in situations where they must receive or play whilst under pressure or in confined spaces. Available in junior & senior sizes.



# CUSTOM BALLS DESIGNED BY YOU MADE BY US

- 13 different designs.
- 9 Levels of ball; promotional, camp, training & match.
- All sizes (2, 3, 4, 5) available.
- Select your team colors.
- Add sponsor logos at no extra cost to raise funds.
- Delivery in 3-4 weeks by air or 12-14 weeks by ocean.







**CREATE**  
**A REPLICA OR MINI BALL**  
**CREATE**  
**A BALL FOR PLAY OFF'S**  
**OR A TEAM OF THE MONTH**

## USAGE SPECS

	JUGGLER ++	TRAINING +	TRAINING ++		TRAINING +++/ MATCH +	MATCH ++	FUTSAL ++	FUTSAL +++
<b>CATEGORY</b>	Machine Stitched	Machine Stitched	Machine Stitched		High Frequency TBSE Laminated	TBSE Laminated	Machine Stitched	Laminated - TBSE
<b>FINISH</b>	Gloss	Gloss	Gloss		Gloss	Gloss	Gloss	Gloss
<b>OUTER COVER</b>	CLVPC 2.7 MM	CTPU 3.8 MM	TPU 4.2 MM		TPU 2MM + 4MM EVA	PU PW DIMPLE 4.0 MM	TPU 4.2 MM	PU PW DIMPLE 4.0 MM
<b>WEIGHT</b>	150 - 170gr	400 - 420gr	400 - 420gr		430 - 440gr	430 - 440gr	400 - 440gr	430 - 440gr
<b>BLADDER</b>	Natural Rubber	Nylon Wound	Nylon Wound		Fabric Wound	Fabric Wound	Cotton Stuffed Bladder	Fabric Wound
<b>VALVE</b>	Hidden - Butyl	Hidden - Butyl	Hidden - Butyl		50/50 Butyl	50/50 Butyl	Hidden - Butyl	50/50 Butyl
<b>SIZE</b>	2	3,4,5	3,4,5		4,5	5	Official Jr - Sr	Official Sr



Quality Footballs



# Admiral TECHNICAL INFORMATION

A perfect ball for every occasion will always remain the utmost importance to ADMIRAL. Arguably the ball is the most important piece of equipment in the game and vital for precision practices. Why is ADMIRAL better? Simply put, its construction and materials are superbly engineered to provide high quality products suitable for every occasion. Every component contributes towards a balls touch and flight characteristics, quality and specific use.

THE COVER..... Or the outside of the ball provides protection from the elements such as hard ground, moisture, cold weather and the hot sun without compromising the touch and performance. Our soft covers are made form the highest quality materials available, both imported and local. Compare the touch...its the difference.

THE BACKING.... Never seen but a crucial factor in the performance and endurance of a ball. Admiral use soft TPE as backing on most of our covers while others use EVA which is a substandard backing. TPE is softer and more durable than EVA especially in wet and/or cold conditions. It is a superior backing.

THE BLADDER.... As well as hold air, the bladder is highly responsible for the touch, feel, performance and flight of all soccer balls. Latex bladders have traditionally been used in the past and still meet a player's ideal requirements but have issues with air retention. However, recent developments have given us the ability to protect our bladders with nylon without compromising touch and feel. 100% of our bladders are nylon wound which insures the best air retention and guarantees maximum shape during play. These bladders hold air for approximately twice as long as conventional latex bladders without affecting playability at all. By contrast, many of our competitors do not use wound bladders causing issues on the field with performance and shape. Our match balls use blended bladders to provide a soft touch while ensuring proper flight. The valve stem is a critical element of construction and in most cases, air is lost as a result of a defective valve stem. Admiral use the highest quality imported valve stem available which are engineered to reduce air loss and retard decay.

TECHNICAL DATA....The specifications for weight, circumference and recommended pressures are governed by FIFA. All ADMIRAL® balls comply with these specifications, details of which are listed below along with tolerances:

## Sizes and Weights

Size	Weight Range (gms)	Circumference (cms)	Pressure Range (lb's/sq in)	Ages
Size 5	410gm to 445gm	68cms to 70cms	8 to 10	12 and UP
Size 4	350gm to 390gm	63.5cms to 66cms	8 to 10	8 and 12 Years
Micro/Size 3	290gm to 320gm	61cms to 63cms	6 to 8	Under 8 Years

## QUALITY COMES FROM INSIDE

**THERMO BONDING-** The highest quality International Match balls are thermally bonded. The PU panels are bonded one by one to the bladder with heat and pressure and so there are no seams and no stitches. This means less water uptake and a higher performance for the best players.

**HIGH FREQUENCY BONDING-** Suitable for Match play, this technique of bonding is similar to Thermo Bonding but instead of bonding single panels together, they bond 6 – 8 panels at a time. This ball also offers a high quality playing experience than machine stitched balls.

**MACHINE STITCHED-** Machine stitched balls are used for training or youth match play. Machine stitching offers a truer flight than is older counterpart i.e. hand stitched balls. When a ball is hand stitched, the exact same pressure is not put on each seam meaning that it is not a spherical as the newer method of machine stitching. Because machine stitching has to be soft for the needle to penetrate the outer cover, the material is also much softer to the touch than training balls that are hand stitched.







## Orion Match + + +

#4078

International match, Laminated TBSE construction, Semi dull dimple casing, 4,0mm PU, fabric wound bladder, hidden valve, Size 5.

Size: 5

Construction: Laminated.

Rating: + + +





## Force Training ++

#4071

Training ball, machine stitched, TPU  
4,2mm lamination, nylon wound bladder,  
hidden butyl valve, Sizes 3,4 & 5,  
each size is a different color.

Size: 3, 4, 5

Construction: Machine Stitched.

Rating: ++



## Epic Training +

#4079

Training ball, machine stitched, CTPU  
3,8mm lamination, nylon wound bladder,  
hidden butyl valve, sizes 3, 4 & 5.

Size: 3, 4, 5

Construction: Machine Stitched.

Rating: +



## Mach 1 Futsal Match ++

#4076

Futsal International match low bounce ball, size 4 official senior size, Laminated TBSE construction, Semi dull dimple casing, 4,0mm PU, fabric wound bladder hidden valve.

Size: 4

Construction: Laminated.

Rating: ++



## Nero Streetball

#4077

Street & freestyle ball, Laminated TBSE construction, Denim fabric for grip, fabric wound bladder, hidden valve, size 5.

Size: 5

Construction: Machine Stitched.





*Kevin Keegan*  
English Football Legend

"Liverpool, Hamburg, Southampton, Newcastle.  
European footballer of the year 1978 & 1979."  
3X BPL Titles, 1X German Title, 2X UEFA Cups,  
1X European Cup, 1X FA Cup.  
Manager of Newcastle United, Fulham,  
Manchester City & Everton





## **CUSTOMER SERVICE**

**hello@admiralsports.com.au**

**www.admiralsports.com.au**