


<b>Directorate</b>	<input type="checkbox"/> Adults, Health and Communities <input type="checkbox"/> Corporate Services <input checked="" type="checkbox"/> Children and Young People <input type="checkbox"/> Regeneration and Economic Growth <input checked="" type="checkbox"/> Schools	<b>Service/Team</b>	Generic Risk Assessment - Education & Inclusion		
<b>Risk Assessment for</b>	COVID-19 Secure - Schools	<b>Ref no</b>	C19SCS	<b>Date completed</b>	Amended Sept 21
<b>Occupation/activity/task</b>		<b>Location</b>	Crigglestone Nursery School	<b>Review date</b>	As advised by PHE
<b>Assessor name(s) Corporate Health &amp; Safety Adviser, Education &amp; Inclusion</b>					

## SECTION 1

### 1.1 Risk Matrix

		Severity				
		1	2	3	4	5
Likelihood		<b>Very low</b> Insignificant injury	<b>Low</b> Minor injury Verbal abuse	<b>Moderate</b> Threatening behaviour Serious injury	<b>Severe</b> Physical abuse Multiple injuries Serious injury requiring hospital treatment	<b>Very severe</b> Extensive multiple injuries requiring hospital treatment Life changing injuries Fatality
		<b>1</b> Extremely unlikely	<b>2</b> Remote possibility	<b>3</b> Possible occurrence	<b>4</b> Will probably occur	<b>5</b> Almost certain
		1	2	3	4	5
		2	4	6	8	10
		3	6	9	12	15
		4	8	12	16	20
		5	10	15	20	25

Use of the 5 x 5 risk matrix will provide an overall risk score of between 1 (very low) and 25 (very severe) which helps to determine the appropriate response based on the following:-

Risk score 1 - 3	Low risk
Risk score 4 - 9	Moderate risk
Risk score 10 - 16	High risk
Risk score 20 - 25	Very high risk

### 1.2 Persons/groups at risk

The following are individuals/groups of people who may be at risk from your undertakings. This list is not exhaustive:-

- Employees
- Work Experience
- Volunteers
- Apprentices
- Contractors/Sub Contractors
- Members of the public
- Young People
- Pupil(s)
- New or Expectant Mothers
- Service Users

## SECTION 2

<b>What are the hazards</b> <i>Identify hazards (relevant to occupation/ activity/task)</i>	<b>Those at risk</b>	<b>How they might be harmed?</b> <i>e.g. sprains, strains, lacerations etc.</i>	<b>What are you already doing/ your existing control measures</b> <i>List existing controls or note where information may be found e.g. standards, safe systems of work etc.</i>	<b>Risk Rating Severity x Likelihood</b> <i>Scores of 10 and above require further action. See section 3</i>	
<p>This risk assessment has been developed using the Government guidance documents –  <a href="https://www.gov.uk/government/collections/early-years-and-childcare-coronavirus-covid-19?utm_source=24%20September%202021%20C19&amp;utm_medium=Daily%20Email%20C19&amp;utm_campaign=DfE%20C19">https://www.gov.uk/government/collections/early-years-and-childcare-coronavirus-covid-19?utm_source=24%20September%202021%20C19&amp;utm_medium=Daily%20Email%20C19&amp;utm_campaign=DfE%20C19</a>  <a href="https://www.gov.uk/coronavirus/education-and-childcare">https://www.gov.uk/coronavirus/education-and-childcare.</a>            Schools Contingency Framework: Education and childcare settings Published August 2021  <a href="https://www.gov.uk/government/publications/coronavirus-covid-19-early-years-and-childcare-closures/actions-for-early-years-and-childcare-providers-during-the-covid-19-pandemic">https://www.gov.uk/government/publications/coronavirus-covid-19-early-years-and-childcare-closures/actions-for-early-years-and-childcare-providers-during-the-covid-19-pandemic</a></p> <p>It is for each school to use this over-arching assessment as a basis to develop a COVID-19 Secure risk assessment for their school.</p>					
1.	Building Management & Readiness	All employees Children	Acquire COVID-19 Viral infection. Refer to the national guidance for the case definition  <a href="https://www.gov.uk/government/publications/wuhan-novel-coronavirus-initial-investigation-of-possible-cases/investigation-and-initial-clinical-management-of-possible-cases-of-wuhan-novel-">https://www.gov.uk/government/publications/wuhan-novel-coronavirus-initial-investigation-of-possible-cases/investigation-and-initial-clinical-management-of-possible-cases-of-wuhan-novel-</a>	<u>Inspect the site for:</u> <ul style="list-style-type: none"> <li>• Damage to the building and fixtures and fittings</li> <li>• Damage to grounds, playgrounds, outdoor play equipment, fencing, trees</li> <li>• Rodent activity and/or infestations – commissioning of pest control may be required</li> </ul> <u>Operational checks (to ensure good working order) to be carried out on:</u> <ul style="list-style-type: none"> <li>• Fire alarms/smoke alarms/panic and accessible-toilet alarms</li> <li>• Fire door mechanisms</li> <li>• Emergency lighting</li> <li>• Gas supplies; kitchen</li> <li>• Kitchen equipment</li> <li>• Water systems including flushing through and disinfection in accordance with your legionella risk assessment and policy</li> </ul>	9 reduced to 4 with all measures in place

			<a href="#">coronavirus-wn-cov-infection</a>	<ul style="list-style-type: none"> <li>• Water systems to look for leaks and ensure there is provision of hot water</li> <li>• Windows, door and gates including electronic gates and doors</li> <li>• Equipment used on site e.g., floor cleaners, photocopiers, white boards (servicing should be in line with the manufacturer'/providers requirements)</li> </ul> <p><u>Ensure Statutory Inspections are up to date for:</u></p> <ul style="list-style-type: none"> <li>• <b>Pressure systems</b> (if the scheduled inspections have not taken place in the last 12 months)</li> <li>• <b>Gas supplies</b> (if the scheduled inspections have not taken place in the last 12 months)</li> <li>• <b>Fixed wiring</b> (if the scheduled tests required by the regulations have not taken place)</li> <li>• <b>PAT</b> (if the scheduled tests required by the regulations have not taken place in line with your individual deadlines)</li> <li>• <b>Asbestos Management Plan</b> (if the plan has not been re-assessed in the last 12 months)</li> <li>• <b>Fixed Outdoor Play Equipment</b> (if the scheduled inspections have not taken place in the last 12 months)</li> </ul> <p><u>Cleaning the premises</u></p> <ul style="list-style-type: none"> <li>• All touch surfaces should be given priority for cleaning.</li> </ul> <p><u>Supplies</u></p> <ul style="list-style-type: none"> <li>• Ensure you have adequate supplies of soap and hand towels/drying facilities in kitchens, toilets and sinks</li> </ul>	
2.	System of Controls  <i>(Predominant new variant is more transmissible, PHE guidance remains the same that the way to</i>			<b>System of controls</b>  <b>Prevention:</b>  <b>You must always:</b>	12 reduced to 6 with measures in place

	<p><i>control the virus is with the system of controls)</i></p>			<ol style="list-style-type: none"> <li>1) Minimise contact with individuals who are required to self-isolate by ensuring they do not attend the school.</li> <li>2) Ensure face coverings are used in recommended circumstances.</li> <li>3) Ensure everyone is advised to clean their hands thoroughly and more often than usual.</li> <li>4) Ensure good respiratory hygiene for everyone by promoting the 'catch it, bin it, kill it' approach.</li> <li>5) Maintain enhanced cleaning, including cleaning Frequently touched surfaces often, using standard products such as detergents.</li> <li>6) Keep occupied spaces well ventilated.</li> </ol> <p><b>In specific circumstances:</b></p> <ol style="list-style-type: none"> <li>7) Ensure individuals wear the appropriate personal protective equipment (PPE) where necessary.</li> </ol> <p><b>Promote and engage in asymptomatic testing, where available. System of controls – prevention</b></p> <p><b>Minimise contact with individuals who are required to self-isolate by ensuring they do not attend the school</b></p> <p><b>When an individual develops coronavirus (COVID-19) symptoms or has a positive test</b></p>	
--	---	--	--	---	--

Pupils, staff and other adults not come into the school if:

- they have one or more [coronavirus \(COVID-19\) symptoms](#)
- They are required to [quarantine having recently visited countries outside the Common Travel Area](#)
- They have had a positive test.

They must immediately cease to attend and not attend for at least 10 days from the day after:

- The start of their symptoms
- The test date if they did not have any symptoms but have had a positive test (whether this was a [Lateral Flow Device \(LFD\) or Polymerase Chain Reaction \(PCR\) test](#))

You must follow this process and ensure everyone onsite or visiting is aware of it.

Anyone told to isolate by NHS Test and Trace or by their public health protection team has a legal obligation to self-isolate, but you may leave home to avoid injury or illness or to escape risk of harm. More information can be found on [NHS Test and Trace: how it works](#)

If anyone in your school develops a new and continuous cough or a high temperature, or has a loss of, or change in, their normal sense of taste or smell (anosmia), you:

- must send them home to begin isolation - the isolation period includes the day the symptoms started and the next 10 full days
- advise them to book their own test online at: <https://www.gov.uk/get-coronavirus-test> or If they need help to book a test call 01924 22 44 97

They should seek advice to see if members of their household (including any siblings and members of their support or childcare bubble if they have one) should self-isolate.

If a member of the household starts to display symptoms they must book their own test.

If anyone tests positive whilst not experiencing symptoms they must book a test online at: <https://www.gov.uk/get-coronavirus-test> or book a test call 01924 22 44 97

If a pupil is awaiting collection:

- they should be moved, if possible, to a room where they can be isolated behind a closed door, depending on the age and needs of the pupil, with appropriate adult supervision if required
- a window should be opened for fresh air ventilation if it is safe to do so
- if it is not possible to isolate them, move them to an area which is at least 2 metres away from other people
- if they need to go to the bathroom while waiting to be collected, they should use a separate bathroom if possible - the bathroom must be cleaned and disinfected using standard cleaning products before being used by anyone else

personal protective equipment (PPE) must be worn by staff caring for the pupil while they await collection if a distance of 2 metres cannot be maintained (such as for a very young child or a child with complex needs) - more information on PPE use can be found in the [safe working in education, childcare and children's social care settings guidance](#) In an emergency, call 999 if someone is seriously ill or injured or their life is at risk. Anyone with coronavirus (COVID-19) symptoms should not visit the GP, pharmacy, urgent care centre or a hospital, unless advised to.

The individual should not use public transport if they are symptomatic. If arranging their return to their family home to isolate, schools should follow advice on transport arrangements in the [safe working in education, childcare and children's social care settings guidance](#).

**When an individual has had close contact with someone with coronavirus (COVID-19) symptoms**

Any member of staff who has provided close contact care to someone with symptoms, regardless of whether they are wearing PPE, and all other members of staff or pupils who have been in close contact with that person, do not need to go home to self-isolate unless

- they develop symptoms themselves (in which case, they should self-isolate immediately [and arrange to have a test](#))
- they are requested to do so by NHS Test and Trace or the Public Health England (PHE) advice service (or PHE local health protection team if escalated)
- they have tested positive from an LFD test as part of a community or worker programme

Everyone must wash their hands thoroughly for 20 seconds with soap and running water or use hand sanitiser after any contact with someone who is unwell. The area around the person with symptoms must be cleaned after they have left, to reduce the risk of passing the infection on to other people. See the guidance on the [cleaning of non-healthcare settings](#).

**If you are contacted by NHS Test and Trace or your local health protection team and told to self-isolate because you have been a close contact of a positive case, you have a legal obligation to do so.**

**Wearing of face coverings.**

				<ul style="list-style-type: none"> <li>• In the event of an outbreak face coverings may be advised to be worn by adults when moving around the premises</li> <li>• In the event of an outbreak face coverings may be advised to be worn by adults outside of classrooms where social distancing cannot be easily maintained</li> </ul> <p><b>Primary Schools</b></p> <p>In the event of an outbreak it may be recommended that face covering should be worn by staff and adult visitors in situations where social distancing between adult is not possible e.g., moving around in corridors and communal areas. Children in schools do not need to wear face coverings</p> <p><b>Exemptions</b></p> <p>Some individuals are exempt from wearing face coverings. This applies to those who:</p> <ul style="list-style-type: none"> <li>○ cannot put on, wear or remove a face covering because of a physical impairment or disability, illness or mental health difficulties</li> <li>○ speak to or provide help to someone who relies on lip reading, clear sound or facial expression to communicate</li> </ul>	
3.	Covid-19 – Response to any infection			<p><b>Response to any infection:</b></p> <p><b>You must always</b></p> <ol style="list-style-type: none"> <li>1) Promote the NHS Test and Trace process.</li> </ol>	12 reduced to 6 with measures in place



				<p>2) Contain any outbreak by following local health protection team advice.</p> <p>All pupil absence must be followed up on day 1 with detailed reason of absence noted.</p> <p>All staff must inform the HT of any illness including on non-working days.</p> <p>Sunshine room to be used for isolation as required.</p> <p>Aprons, gloves, masks and goggles provided in isolation pack located in the Sunshine Room.</p>	
4.	High Risk Employees			<p><b>School workforce</b></p> <p>School leaders are best placed to determine the workforce that is required in school, taking into account the updated advice set out in this section of the guidance for those staff who are CEV and CV.</p> <p>All staff must follow the system of controls to minimise the risks of transmission. Following the system of controls will reduce the risks to all staff significantly.</p> <p>Those living with someone who is CEV and CV can still attend work and should ensure they maintain good prevention practice in the workplace and home settings.</p> <p><u>Staff who are Clinically Extremely vulnerable (CEV) and Clinically Vulnerable (CV)</u></p> <p>CEV and CV staff can continue to attend school. While in school they must follow the system of controls to minimise the risks of transmission.</p>	12 reduced to 6 with measures in place

Pregnancy

Employees will need to follow the [specific guidance for pregnant](#) employees

If an employee is pregnant they have to let the employer know in writing, once the employer have been informed the employer has a duty to undertake a [new and expectant mum's risk assessment](#)

Pregnant women of any gestation should not be required to continue working if this is not supported by the risk assessment. Pregnant women are considered ['clinically vulnerable' or in some cases 'clinically extremely vulnerable'](#) to coronavirus (COVID-19), and therefore require special consideration as contained in government guides for [different industries](#).

**The following recommendations apply for women less than 28 weeks pregnant with no underlying health conditions that place them at a greater risk of severe illness from coronavirus (COVID-19)**

- You must first have a workplace risk assessment undertaken by your employer
- You should only continue working if the risk assessment advises that it is safe to do so.
- This means that your employer should remove or manage any risks. If this cannot be done, you should be offered suitable alternative work or working arrangements (including working from home) or be suspended on your normal pay.
- You should be supported by your employer with appropriate risk mitigation in line with recommendations to staff arising from workplace risk assessment.

- If alternative work cannot be found, advice on suspension and pay can be found in [HSE guidance](#).

**The following recommendations apply for pregnant women who are 28 weeks pregnant and beyond or with underlying health conditions that place them at a greater risk of severe illness from coronavirus**

Employees that are 28 weeks pregnant and beyond, or if they are pregnant and have an underlying health condition that puts them at a greater risk of severe illness from COVID-19 at any gestation, they should take a more precautionary approach.

For many employees, this may require working flexibly from home in a different capacity.

Where adjustments to the work environment and role are not possible and alternative work cannot be found, you should be suspended on paid leave. Advice on suspension and pay can be found in [HSE guidance](#).

Guidance on vaccination

[. COVID-19 vaccination: a guide for women of childbearing age, pregnant or breastfeeding contains vaccination advice](#)

**Black, Asian & Minority Ethnic (BAME) Employees**

- Some people with particular characteristics may be at comparatively increased risk from coronavirus (COVID-19), as set out in the [COVID-19: review of disparities in risks and outcomes report](#).

- School leaders should try as far as practically possible to accommodate additional measures where appropriate.
- Public Health England have published a report that looks at the disproportionate impact of COVID. This includes a section on ethnicity. The report is clear that the COVID-19 pandemic has had a disproportionate effect on BAME people. The report did not analyse the effect of occupation and acknowledges this is a significant shortcoming. The disproportionate impact of COVID-19 on the BAME population is worrying and will cause anxiety. Headteacher should be aware of this and be pro-active in encouraging safe working practices and direct BAME employees to support for their health and wellbeing – for example NHS 111, GP or OHU referral. If guidance to protect the health of BAME populations changes this will be circulated and risk assessments may need to be reconsidered.

**Self-isolating Employees.**

- Any employee required to stay home under [existing Government guidance](#), for example due to having Covid19 symptoms or contact with a Covid-19 case, must inform their headteacher following sickness reporting procedures. Staff must inform the HT in addition to their immediate line manager.
- The employee must self-isolate and not attend the workplace for the prescribed period determined in the Government Guidance.
- Employees self-isolating and who are fit to work, may work from home in agreement with their headteacher, subject to an appropriate home working risk assessment.

5.	Visitors / parents and pupils accessing the site dropping off / collecting pupils			<ul style="list-style-type: none"> <li>• No one should enter the School premises if they are displaying symptoms of covid-19 e.g. employees, parents, pupils, contractors etc.</li> <li>• Stop all non-essential visitors entering site Parents must not enter school– children must be dropped off and collected at the entrance</li> <li>• A clear demarcation line is in place around the reception areas so that 2 metre social distancing can be maintained.</li> <li>• Face coverings should be worn by visitors to the indoor school site.</li> <li>• Where possible introduce staggered start and finish times to reduce congestion and contact at all times, with no reduction to overall teaching time for any group</li> </ul> <p><b>DROP OFF:</b>  Breakfast club pupils must arrive 8.00 – 8.30 am  am sessional pupils must arrive 8.50 – 9.00 am  am 30 hours pupils must arrive 9.00 – 9.10 am  pm 30 hours pupils must arrive 9.30 – 9.40 am  pm sessional pupils must arrive 12.30 – 12.40pm</p> <p><b>COLLECTION;</b>  am sessional pupils must be collected 11.40 – 11.50am  am 30 hours pupils must be collected 2.50 – 3.00pm  pm sessional and 30 hours pupils must be collected 3.20 – 3.30pm  Tea Club pupils must be collected 3.50 – 4.00pm</p> <ul style="list-style-type: none"> <li>• Manage external site access points to enable social distancing</li> <li>• Allow plenty of space (two metres) between people waiting to enter site</li> <li>• Regularly clean and disinfect common contact surfaces in reception, office, access control and delivery areas e.g. screens, telephone handsets, desks, particularly during peak flow times.</li> <li>• Where visitors are expected to sign in at reception – ensure this is carried out by office staff and no pens are visible</li> </ul>	12 reduced to 6 with measures in place
----	---	--	--	---	--

				<ul style="list-style-type: none"> <li>Regularly clean staplers, hole punchers, “touch screen” photocopiers, marker pens &amp; whiteboards</li> <li>The handling of cash is discouraged from parents and where possible online / contactless payments are made</li> </ul>	
6.	Cloakroom Areas Circulatory Areas / staircases			<ul style="list-style-type: none"> <li>Where possible the allocation of drop off and collection times to be arranged with parents/guardians (See section 5)</li> <li>Clear communication to parents including gathering at the school gates and otherwise coming onto the site without an appointment is not allowed</li> <li>Limit the amount of equipment pupils bring into school each day, to essentials such as lunch boxes, hats, coats, wellies and change of clothes in a bag</li> </ul>	12 reduced to 6 with measures in place
7.	Teaching & Learning in the Classroom environment-			<ul style="list-style-type: none"> <li>Strict hygiene rules to be implemented, all employees and pupils to be asked to do the following</li> <li>Clean hands thoroughly more often than usual upon entering or changing locations/classrooms or moving to new activities after handling equipment.</li> <li>Ensure sufficient hand cleaning and sanitiser points are available for staff and pupils</li> <li>Wash hands if face, mouth or eyes are touched</li> <li>Ensure good respiratory hygiene by promoting the ‘catch it, bin it, kill it’ approach – ensure availability of tissues and bins. Empty bins regularly in line with ‘double bag’ guidance</li> <li>Bins to be open topped unless the bin is a pedal bin, all waste to be double bagged</li> <li>Put in place a schedule for enhanced cleaning, including cleaning frequently touched surfaces often, using sanitiser or the usual cleaning products. <ul style="list-style-type: none"> <li>All high contact surfaces to be cleaned throughout the day</li> <li>more frequent cleaning of rooms / shared areas that are used by different groups</li> <li>All resources, equipment etc. should be cleaned on a daily basis with an antibacterial cleaning product</li> <li>All Computers / ICT equipment should be cleaned</li> </ul> </li> </ul>	12 reduced to 6 with measures in place

				<p>after every session with an antibacterial spray / wipe</p> <p>Items that can be cleaned will be done so using sanitiser or the usual cleaning products. PPE is not necessary for this task, regular handwashing will suffice and minimise the risk of cross contamination.</p>	
8.	Foundation Stage pupils – including free flow play			<ul style="list-style-type: none"> <li>• All items which can be cleaned after each session, to be sanitised, otherwise all equipment is to be sanitised at the start and end of each day as a minimum</li> <li>• Supervision is key at all times</li> </ul>	12 reduced to 6 with measures in place
9.	Educating pupils on the risks of covid-19			<ul style="list-style-type: none"> <li>• There is a concern that different age groups of pupils, or pupils with different need will interpret the information differently on the risks of covid-19. Therefore:-</li> <li>• Employees should consider delivering the information in different formats pitched at the right level for the age groups. This could include, for example, social stories</li> </ul>	6
10.	Welfare			<ul style="list-style-type: none"> <li>• Ensure that toilet times are staggered where possible to minimise contacts and to avoid congestion</li> <li>• toilets will need to be cleaned regularly and pupils must be encouraged to clean their hands thoroughly after using the toilet</li> <li>• Promote good practice to build and remind awareness of: <ul style="list-style-type: none"> <li>• Good hand hygiene</li> <li>• Frequency of hand washing/hand sanitisation</li> <li>• Avoidance of touching face</li> <li>• Rules around coughing and sneezing into a tissue or arm</li> </ul> </li> <li>• All toilets are cleaned on a daily basis with an antibacterial spray, paying particular attention to the toilet seat, flush, door handles, sinks etc.</li> </ul>	12 reduced to 6 with measures in place
11.	Outdoor learning			<ul style="list-style-type: none"> <li>• Large fixed equipment and outdoor playground equipment should be more frequently cleaned.</li> <li>• All toys &amp; play equipment should be cleaned on a daily basis with an antibacterial spray</li> </ul>	6

12.	Dining Room – lunch times			<ul style="list-style-type: none"> <li>• All staff should wear gloves, aprons when passing pupils utensils, cups etc.</li> <li>• Food and drink should only be consumed in dedicated areas</li> <li>• Hand cleaning facilities or hand sanitiser to be available at the entrance of the dining room and should be used by all persons when entering and leaving the area</li> <li>• Tables and chairs should be cleaned between each use.</li> <li>• All areas used for eating must be thoroughly cleaned at the end of each break, including chairs, tables and door handles</li> <li>• Parents must inform any changes to their child’s dietary requirements via email to the Headteacher – if parents don’t have access to email / a telephone conversation / zoom call to be arranged</li> </ul>	12 reduced to 6 with measures in place
13.	Breakfast and after School clubs			<p>Any before or after school provision must align with protective measures in place and meet guidance <a href="#">Protective measures for holiday or after-school clubs and other out-of-school settings for children during the coronavirus (COVID-19) outbreak</a></p> <ul style="list-style-type: none"> <li>• All food items are taken to the pupils seating area by a member of staff</li> <li>• All food items and utensils are collected by staff</li> <li>• All tables, chairs, hard surfaces etc. are cleaned with an antibacterial spray after use</li> </ul>	12 reduced to 6 with measures in place
14.	Music			<p>In the event of an outbreak schools should note that there may be an additional risk of infection in environments where you or others are singing, chanting, or shouting. This applies even if individuals are at a distance.</p> <p>Schools should consider how to reduce the risk, particularly when pupils are singing in small groups by, for example, physical distancing, positioning pupils side-to-side, and ensuring good ventilation.</p>	12 reduced to 6 with measures in place



15.	Governors Meetings, SEN meetings with parents etc.			<ul style="list-style-type: none"> <li>• Where possible employees are to maintain a safe distance between each other (2m) in the meeting room / office environment</li> <li>• Meetings with parents should be pre-arranged in a setting where social distancing can be maintained. If this is not possible then the meeting can take place over the telephone or via online call facility.</li> </ul>	12 reduced to 6 with measures in place
16.	Conflict management between pupils and parents			<ul style="list-style-type: none"> <li>• Staff only to intervene with pupils if there is a serious risk of injury or damage to property</li> <li>• De-escalation techniques should be used to try and calm situations</li> <li>• Restraint should only be undertaken as a last resort</li> <li>• Parents are regularly reminded of their responsibilities and behaviours on the School site</li> </ul>	12 reduced to 6 with measures in place
17.	Administering First Aid			<ul style="list-style-type: none"> <li>• PPE appropriate to the circumstances <b>would only be required if first aid was required for someone with Covid-19 symptoms.</b> e.g. gloves, face masks and eye protection ( if necessary) should be provided</li> <li>• Wash hands before and after and ensure the affected area is cleaned upon completion</li> <li>• All first aid waste and PPE should be disposed of by double bagging and put in the clinical / external waste</li> <li>• First aid boxes accessible to first aiders. For injuries and ill health that is beyond basic first aid, 111 to be called and 999 in an emergency.</li> <li>• <a href="https://www.hse.gov.uk/news/first-aid-certificate-coronavirus.htm">https://www.hse.gov.uk/news/first-aid-certificate-coronavirus.htm</a></li> </ul>	12 reduced to 6 with measures in place
18.	Administering Medication			<ul style="list-style-type: none"> <li>• PPE appropriate to the circumstances <b>would only be required</b> when administering medication <b>for someone with Covid-19 symptoms</b> PPE appropriate to the circumstances e.g. gloves, face masks and eye protection if necessary should be provided</li> <li>• Wash hands before and after and ensure the affected area is cleaned upon completion</li> <li>• All clinical waste and PPE should be disposed of by double bagging and put in the clinical / external waste</li> </ul>	12 reduced to 6 with measures in place

19.	Providing intimate care			<ul style="list-style-type: none"> <li>• The virus that causes COVID-19 is mainly transmitted through droplets generated when an infected person coughs, sneezes or speaks. These droplets are too heavy to hang in the air. They quickly fall on floors or surfaces. The advice for schools, colleges and childcare settings is to follow steps on <a href="#">social distancing, handwashing and other hygiene measures</a>, and <a href="#">cleaning</a> of surfaces.</li> <li>• If you are not providing intimate care to someone, PPE is not needed.</li> <li>• Some children, and young people with special educational needs, may be unable to follow social distancing guidelines, or require personal care support. In these circumstances, staff need to increase their level of self-protection, such as minimising close contact (where appropriate), cleaning frequently touched surfaces, and carrying out more frequent handwashing.</li> <li>• Employees should continue to use the PPE that they have always used (such as an apron and gloves) when undertaking more intimate care with pupils.</li> </ul>	12 reduced to 6 with measures in place
20.	Fire Drills / Activation of the fire alarm			<ul style="list-style-type: none"> <li>• Markers should be displayed at the assembly area</li> <li>• Headteacher to have reviewed and amended all PEEPs to ensure all those under their duty of care that require assistance can evacuate have a trained buddy within the workplace when they are in attendance.</li> </ul>	6
21.	Cleaning			<p>A cleaning schedule must be implemented throughout the site, ensuring that contact points, e.g. work surfaces, door handles, bannisters, window levers, taps etc. are all thoroughly cleaned and disinfected regularly.</p> <p>Cleaning protocol is as follows:</p> <ul style="list-style-type: none"> <li>• Hard surfaces to be cleaned prior to disinfecting</li> <li>• A combined detergent disinfectant solution or chlorine-based cleaner is to be used</li> <li>• Extra attention is to be given to frequently “Touched” areas and surfaces, e.g. doors, toilets, door handles, phones, light switches and door</li> </ul>	12 reduced to 6 with measures in place

				<p>fobs, keyboards, whiteboards etc.</p> <ul style="list-style-type: none"> <li>• Hand towels and hand wash area to be checked and replaced as needed by the Cleaning and Caretaking staff.</li> <li>• Enhance the cleaning regimes for toilet facilities, particularly door handles, locks and the toilet flush, etc.</li> <li>• Only cleaning products supplied by the school are to be used</li> <li>• All bins to have double liners</li> </ul> <p><a href="https://www.gov.uk/government/publications/covid-19-decontamination-in-non-healthcare-settings/covid-19-decontamination-in-non-healthcare-settings">https://www.gov.uk/government/publications/covid-19-decontamination-in-non-healthcare-settings/covid-19-decontamination-in-non-healthcare-settings</a></p>	
22.	Home Visits to be undertaken by staff			<ul style="list-style-type: none"> <li>• Employees should use their own vehicle to get to the visit (private vehicles should be insured for business use)</li> <li>• Hand sanitiser used before entering and upon leaving the home</li> <li>• Staff to wear masks during the home visit</li> <li>• Lone working procedures must be adhered to at all times when undertaking home visits e.g. buddy systems, regular telephone contact with School</li> </ul>	16 reduced to 6 with measures in place
23.	Deliveries			<ul style="list-style-type: none"> <li>• When placing orders for delivery ensure that you inform the company of the Schools protocol for accepting deliveries</li> <li>• If practicable drivers should wash or clean their hands before unloading goods and materials</li> <li>• Employees should not sign for deliveries</li> <li>• Hands are to be thoroughly washed after handling all deliveries</li> <li>• Keep deliveries to a minimum with essential items only</li> <li>• Under no circumstance should any personal deliveries or collections be made to or from the work place</li> </ul>	12 reduced to 6 with measures in place
24.	Contractors / essential repair work			<ul style="list-style-type: none"> <li>• Only contractors carrying out essential maintenance work are to be allowed on the School site</li> </ul>	12 reduced to 6 with measures in place

				<ul style="list-style-type: none"> <li>All contractors are to sanitise their hands upon entering the site</li> </ul> <p>Strict hygiene rules to be implemented, all contractors are to be asked to do the following:</p> <ul style="list-style-type: none"> <li>Wash hands on entry into individual work areas – or use alcohol-based hand sanitiser.</li> </ul>	
25.	Information to employees, pupils & parents			<ul style="list-style-type: none"> <li>Posters to displayed in the main entrance, staff room and in suitable places around the School site</li> <li>Regular meetings with employees will be carried out, informing them of the risks posed by the virus and any new / updated government guidance available</li> <li>Regular updated information will be shared with parents via either a letter, email, newsletter, school website etc.</li> <li>Parents/guardians to be provided with information on protocols for contact for example, which entrance to use</li> <li>Request parents/guardians not to gather at entrance gates or doors, or enter the site (unless they have a pre-arranged appointment, which should be conducted safely)</li> </ul>	12 reduced to 6 with measures in place
26.	Personal Protective Equipment			<p>The use of PPE will depend on the type of service being provided to the service user and the likely risk of virus transmission.</p> <p>PPE protects the wearer against health or safety risks at work. Where you are already using PPE in your work activity to protect against non-COVID-19 risks, you should continue to do so.</p> <p>When managing the risk of COVID-19 for employees in the workplace, additional PPE beyond what you usually wear is not beneficial. This is because COVID-19 is a different type of risk to the risks you normally face in a workplace and needs to be managed through hygiene and fixed teams or partnering, not through the use of PPE.</p>	12 reduced to 6 with measures in place

				<p>The exception is working in clinical settings, like a hospital, adult social care settings such as care homes and domiciliary services or when responding to a suspected or confirmed case of COVID-19.</p> <p>Note: PPE is only effective when combined with: hand hygiene (cleaning your hands regularly and appropriately); respiratory hygiene and avoiding touching your face with your hands, and following standard infection prevention and control precautions, including putting on and taking off PPE.</p> <p>A small number of pupils may present an addition risk due to spitting, excessive saliva production/drooling, biting. These pupils will have an individual Risk Assessment documenting the additional measures and PPE to be used and when. Face Shields will be available, will be part of the risk assessment, and are to be used in place of face masks where possible (unless the pupils is exhibiting symptoms of Covid)</p>	
27.	Communications and training – returning to work and on-going			<p>Development of communications package on the risk assessments in place and procedures, this must be available to employees prior to returning to work or provided as an update for those who have continued to work. The package will consist of a number forms of communication including:</p> <ul style="list-style-type: none"> <li>• Booklet</li> <li>• Induction</li> <li>• Email</li> <li>• Posters</li> <li>• Mobile devices</li> <li>• Whiteboards/notice boards</li> <li>• Provide advice and information to all employees on mental health through all communication channels</li> <li>• Provide access to 24 hour counselling support – telephone counselling</li> </ul>	12 reduced to 6 with measures in place
28.	Ventilation			Good ventilation reduces the concentration of the virus in the air, which reduces the risk from airborne transmission.	

It is important to ensure the school is well ventilated and a comfortable teaching environment is maintained.

Measures include:-

- mechanical ventilation systems – these should be adjusted to increase the ventilation rate wherever possible and checked to confirm that normal operation meets current guidance and that only fresh outside air is circulated. If possible, systems should be adjusted to full fresh air or, if not, then systems should be operated as normal as long as they are within a single room and supplemented by an outdoor air supply
- natural ventilation – opening windows (in cooler weather windows should be opened just enough to provide constant background ventilation and opened more fully during breaks to purge the air in the space). Opening internal doors can also assist with creating a throughput of air
- natural ventilation – if necessary external opening doors may also be used (as long as they are not fire doors and where safe to do so)

To balance the need for increased ventilation while maintaining a comfortable temperature, consider:

- opening high level windows in colder weather in preference to low level to reduce draughts
- increasing the ventilation while spaces are unoccupied (for example, between classes, during break and lunch, when a room is unused)
- providing flexibility to allow additional, suitable indoor clothing – for more information see school uniform
- rearranging furniture where possible to avoid direct draughts

				Heating should be used as necessary to ensure comfort levels are maintained particularly in occupied spaces	
29.	Asymptomatic testing			<p>Rapid testing remains a vital part of the plan to suppress this virus. Schools should follow the guidance set out for their settings:</p> <ul style="list-style-type: none"><li>• <a href="#">Primary schools, school-based nurseries and maintained nursery schools</a></li></ul>	







# Guide to donning and doffing standard Personal Protective Equipment (PPE)

## for health and social care settings

### Donning or putting on PPE

Before putting on the PPE, perform hand hygiene. Use alcohol handrub or gel or soap and water. Make sure you are hydrated and are not wearing any jewellery, bracelets, watches or stoned rings.

- 1 Put on your plastic apron, making sure it is tied securely at the back.


- 2 Put on your surgical face mask, if tied, make sure it is securely tied at crown and nape of neck. Once it covers the nose, make sure it is extended to cover your mouth and chin.


- 3 Put on your eye protection if there is a risk of splashing.


- 4 Put on non-sterile nitrile gloves.



- 5 You are now ready to enter the patient area.





### Doffing or taking off PPE

Surgical masks are single session use, gloves and apron should be changed between patients.

- 1 Remove gloves, grasp the outside of the cuff of the glove and peel off, holding the glove in the gloved hand, insert the finger underneath and peel off second glove.



- 2 Perform hand hygiene using alcohol hand gel or rub, or soap and water.



- 3 Snap or unfasten apron ties the neck and allow to fall forward.





Snap waste ties and fold apron in on itself, not handling the outside as it is contaminated, and put into clinical waste.

- 4 Once outside the patient room. Remove eye protection.


- 5 Perform hand hygiene using alcohol hand gel or rub, or soap and water.


- 6 Remove surgical mask.


- 7 Now wash your hands with soap and water.



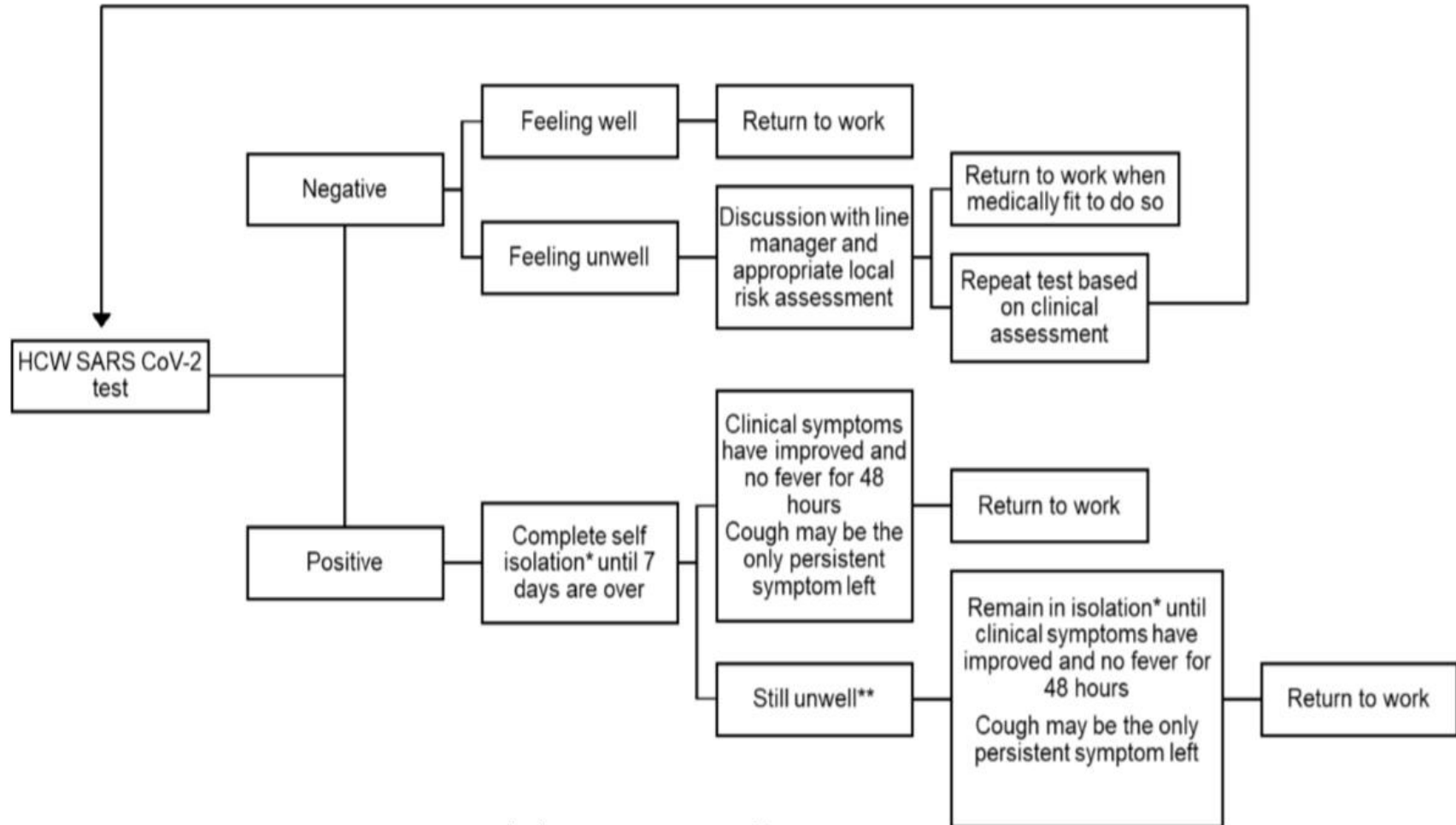
Please refer to the PHE standard PPE video in the COVID-19 guidance collection:  
[www.gov.uk/government/publications/covid-19-personal-protective-equipment-use-for-non-aerosol-generating-procedures](http://www.gov.uk/government/publications/covid-19-personal-protective-equipment-use-for-non-aerosol-generating-procedures)

If you require the PPE for aerosol generating procedures (AGPs) please visit:  
[www.gov.uk/government/publications/covid-19-personal-protective-equipment-use-for-aerosol-generating-procedures](http://www.gov.uk/government/publications/covid-19-personal-protective-equipment-use-for-aerosol-generating-procedures)

<b>Terms/definitions/clarifications etc.</b>		
i	Hand washing protocol	Attached at appendix 1 below <a href="https://www.who.int/gpsc/clean_hands_protection/en/">https://www.who.int/gpsc/clean_hands_protection/en/</a>
ii	Respiratory hygiene protocol	This means covering your mouth and nose with your bent elbow or tissue when you cough or sneeze. Then dispose of the used tissue immediately. <a href="https://www.who.int/emergencies/diseases/novel-coronavirus-2019/advice-for-public">https://www.who.int/emergencies/diseases/novel-coronavirus-2019/advice-for-public</a>
iii	Momentary contact	Relates to ad hoc interventions that may create proximity to bodily fluid – e.g. a driver putting a seatbelt onto a client.
iv	Sessional use	Surgical facemask can be used multiple times and need not be disposed of until wet, damaged or uncomfortable. <a href="https://www.gov.uk/government/publications/wuhan-novel-coronavirus-infection-prevention-and-control/covid-19-personal-protective-equipment-ppe#section-6">https://www.gov.uk/government/publications/wuhan-novel-coronavirus-infection-prevention-and-control/covid-19-personal-protective-equipment-ppe#section-6</a>
v	Prolonged / Intimate care	Is defined as a role which is personally supporting the client to bathe, wash, and feed etc. where there may be close proximity to bodily fluids.
vi	Donning and doffing	Refers to the correct method by which PPE should be put on and taken off. Guidance at appendix 3. <a href="https://www.gov.uk/government/publications/covid-19-personal-protective-equipment-use-for-non-aerosol-generating-procedures">https://www.gov.uk/government/publications/covid-19-personal-protective-equipment-use-for-non-aerosol-generating-procedures</a>  <a href="https://www.youtube.com/watch?v=-GncQ_ed-9w">https://www.youtube.com/watch?v=-GncQ_ed-9w</a>
vii	Disposal of PPE	PPE should be bagged and disposed of in a lidded bin followed by close adherence to hand washing protocol.
viii	Single use	Refers to disposal of PPE after each client interaction.
ix	PHE Covid-19 IPC	<a href="https://www.gov.uk/government/publications/wuhan-novel-coronavirus-infection-prevention-and-control?utm_source=7c916e5e-b965-44d0-a304-cf38d248abba&amp;utm_medium=email&amp;utm_campaign=govuk-notifications&amp;utm_content=immediate">https://www.gov.uk/government/publications/wuhan-novel-coronavirus-infection-prevention-and-control?utm_source=7c916e5e-b965-44d0-a304-cf38d248abba&amp;utm_medium=email&amp;utm_campaign=govuk-notifications&amp;utm_content=immediate</a>



### Flowchart describing return to work following a SARS-CoV-2 test



\*Refer to [Stay at Home Guidance](#)

\*\*Consider contacting the [NHS online coronavirus service](#), or in a medical emergency dial 999.