



MATANUSKA-SUSITNA BOROUGH
Community Development
Land & Resource Management Division
350 East Dahlia Avenue
Palmer, Alaska 99645

MATANUSKA-SUSITNA BOROUGH
PUBLIC NOTICE

Type: Public Utility Easement (MSB008261)

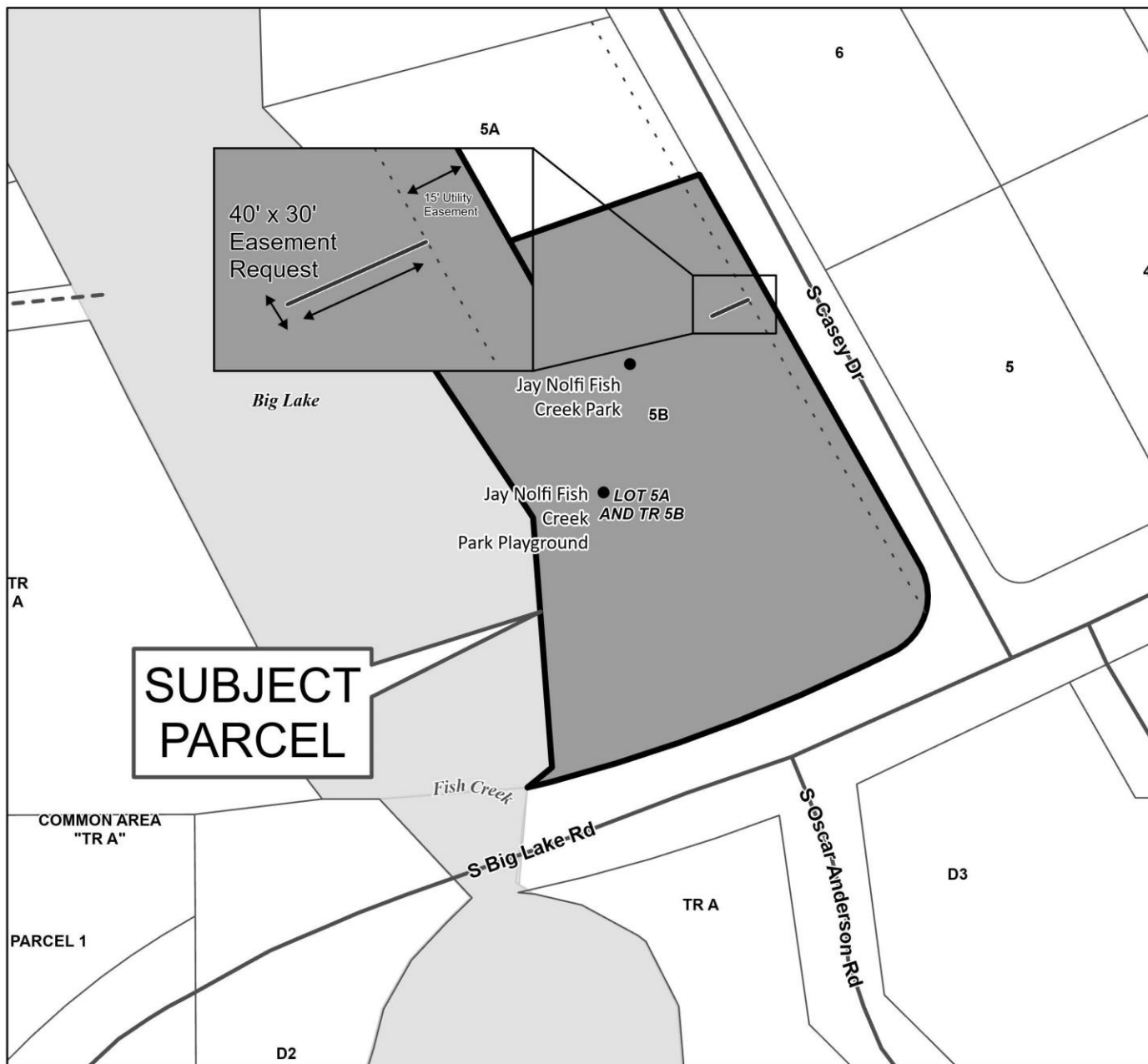
Tax ID: 3206000T005B

The Matanuska-Susitna Borough, Land & Resource Management Division received a request from Matanuska Electric Association (MEA) for a 40' x 30' public utility easement on Borough-owned property located off S. Casey Dr. in Big Lake. This is the location of the Jay Nolfi / Fish Creek Park and playground. The existing power pole is outside of the 15' utility easement. This additional 40 feet of utility easement will cover the power pole and anchor, for the purpose of having a streetlight at that location.

Supporting material is available for public inspection by appointment only during normal business hours on the 2nd floor of the Borough Building in the Land & Resource Management office or visit the Public Notice Section on the Borough's web page, www.matsu.gov. Public comments are invited on this request. If you have any comments please mail or deliver them to the Borough offices at the address indicated above, no later than **February 28, 2026**. If you have questions about this request or would like to schedule an appointment to view supporting materials, call Jill Irsik at 907-861-7866 between 8 am - 5 pm or you can send an e-mail to: LMB@matsu.gov (please refer to **MSB008261 Utility Easement / Jay Nolfi Fish Creek Park when submitting comments**).

Comments: _____

Signature: _____



MSB #008261

Proposed Public Utility Easement

S17N03W28, MSB Map HO13



This map is solely for informational purposes only. The Borough makes no express or implied warranties with respect to the character, function, or capabilities of the map or the suitability of the map for any particular purpose beyond those originally intended by the Borough. For information regarding the full disclaimer and policies related to acceptable uses of this map, please contact the Matanuska-Susitna Borough GIS Division at 907-861-7858.



MSB Information Technology/GIS
January 15, 2026

0 100 200 Feet

