

Direct Metal Solutions

Precision production metal printing with the DMP printer series, 3DXpert[®] software and advanced materials



Direct Metal Printing (DMP) gives you complete design freedom to manufacture stronger parts that are light and durable. Design, test and produce metal parts that are simply not possible with standard manufacturing.

Go Further with Direct Metal Printing

UNLOCK YOUR PRODUCT'S POTENTIAL

With complete design freedom, direct metal 3D printed parts can be stronger, lighter, longer lasting and higher performing than machined or cast assemblies. Manufacture superior performing products faster and at a lower cost compared to traditional fabrication methods.

STREAMLINE SUPPLY CHAINS

With DMP, you have complete control over your production without relying on specialty components from suppliers. Print entire assemblies on demand, with fewer components.

ACCELERATE TIME-TO-MARKET

Conduct R&D, develop prototypes and manufacture production parts all in the same system. DMP users design faster and shorten production times. Transform complex assemblies taking hundreds of hours to manufacture and assemble into a single high-value part printed in hours.

INCREASE MANUFACTURING AGILITY

Metal additive manufacturing requires no tooling. You are able to quickly update designs and change production to meet variable market demands.

DMP Flex 100

Flexible metal AM, exceptional quality

Print exceptionally detailed, high-quality parts in an automated and repeatable process ideal for R&D and serial part manufacturing at the tightest tolerances in direct metal printing. The DMP Flex 100 solution includes extensively tested parameter databases on CoCr, 316L and 17-4PH.

INDUSTRY'S BEST SURFACE FINISH

Reduce machining or polishing of final parts.

CLEAN AND SAFE

Sealed powder loading and recycling prevents material contamination and increases operator safety.

EXCEPTIONAL MECHANICAL PROPERTIES

Roller compaction yields higher density and uniform mechanical properties.

UNMATCHED PRECISION

Print the finest features with exceptional accuracy.

INTEGRATED METAL PRINTING

DMP printers, 3DXpert® software and materials are fine-tuned for process reliability and repeatability.

DMP Flex 200

Professional and precise—now with 500W laser source

Outstanding accuracy, repeatability, and the industry's best surface finish, this printer is designed for applications that have intricate features and thin walls. It features an enlarged build platform for next-day delivery of finished parts. Parameter databases for CoCr and Titanium alloys are available on the DMP Flex 200.

HIGH PERFORMANCE AT LOWER COST

The build volume and 500W laser source lead to reduced cost per part and faster delivery times. Print your high quality parts with fewer supports and visibly better surface finish, resulting in less post processing and material usage.

STREAMLINED DENTAL WORKFLOW

3DXpert Dental automates part orientation, support generation, labeling and nesting. Prepare quality parts in the shortest time.

The Benefits of Direct Metal Printing



CONFORMAL COOLING

Direct integration of conformal cooling channels into this blow mold increases efficiency by 30%.



ENHANCED FLUID FLOW

For this turbine inlet guide vane, computed fluid dynamics simulation predicts a 70% reduction in shock intensity.



SIMPLIFIED ASSEMBLIES

Replacing a complex assembly, this single burner component contains nine under-cuttings and six internal cavities.



TOPOLOGY OPTIMIZATION

Topology optimized aerospace bracket reduces weight by 35%.



REDUCED WEIGHT

Complex lattice structures allow significant weight reduction for this combustion chamber.



MASS CUSTOMIZATION

Designed to perfectly fit the obstructed zone, this reconstruction corrects the patient's facial asymmetry.

DMP Flex 350 and DMP Factory 350

High precision, high throughput

DMP Flex and Factory 350 offer fast build turnaround times in demanding serial production environments.

INTEGRATED METAL PRINTING

DMP printers, 3DXpert software and materials are fine-tuned for process reliability and repeatability.

STRONGER MECHANICAL PROPERTIES

Industry's lowest O₂ content during builds (<25 ppm) for exceptionally strong parts of high chemical purity.

EXTENSIVELY TESTED MATERIALS

Thousands of hours of parameter optimization ensure predictable and repeatable print quality with a broad range of materials.

HIGH QUALITY POWDER MANAGEMENT

DMP Factory 350 comes with integrated and automated powder management at the same footprint as the DMP Flex 350.

DMP Flex 350 Dual and DMP Factory 350 Dual

Achieve high quality performance even faster

DMP Flex 350 and DMP Factory 350 systems now come in a two-laser configuration, reducing build times by up to 50 percent. Boosting productivity while maintaining high quality and repeatability yields lower operational costs.

Our Dual configurations feature our signature vacuum chamber with industry-leading O₂ handling and an intuitive user interface with guided print cycles. Additionally, the DMP Factory 350 Dual integrates powder management into the printer.

DMP Factory 500

Modularity for a scalable factory solution

The DMP Factory 500 Solution is comprised of modules designed to maximize efficiency. Each module is designed to execute a specific function of the additive manufacturing process, i.e. printing (Printing Module), depowdering (Depowdering Module), recycling (Powder Recycling Module) and transporting (Transporting Module). The modules are fully integrated with a Removable Print Module, designed to enable continuous production workflow. The Removable Print Module is sealable to ensure an inerted powder environment throughout the whole manufacturing process. Printer modules are designed for ongoing, 24/7 printing of parts. The Depowdering Module and Powder Recycling Module are designed to efficiently depowder parts on build platforms and automatically recycle unused powder materials, respectively, to prepare the Removable Print Module for the next build.

SEAMLESS LARGE PARTS

The intelligent laser configuration and 3DXpert software-driven scan technology enable the production of seamless large parts the size of the full build volume. This results in the highest surface quality for metal 3D printed parts with outstanding material properties.

UNIFORM, REPEATABLE QUALITY

The Removable Print Module provides consistent powder control, batch after batch to deliver scalable metal additive manufacturing.

HIGH PRODUCTIVITY

With a large build volume (500 x 500 x 500 mm) and high throughput enabled by multiple lasers, the DMP Factory 500 Solution delivers high productivity in metal additive manufacturing.

OPTIMIZE YOUR WORKFLOW

Workflow optimized solution for massive scalability, repeatable high-quality parts, high throughput and low total cost of operations.



Metal Alloys for the DMP Series

3D Systems' broad range of ready-to-run LaserForm materials is formulated and fine-tuned specifically for 3D Systems DMP printers to deliver high part quality and consistent part properties. 3D Systems provides a print parameter database that has been extensively developed, tested and optimized with materials in 3D Systems' part production facilities. These facilities hold the unique expertise of printing 500,000 challenging metal production parts in various materials year over year. 3D Systems also employs a thorough Supplier Quality Management System to deliver consistent, monitored material quality for reliable results.



Heat exchanger with complex cooling channels in LaserForm AlSi10Mg (A)



Minireactor for scale testing built in LaserForm 17-4PH (A)



Gas burner with integrated cooling channels in LaserForm Ni718 (A)



Partials, copings and bridges production in LaserForm CoCr (C)



High corrosion resistant impeller in LaserForm 316L (A)



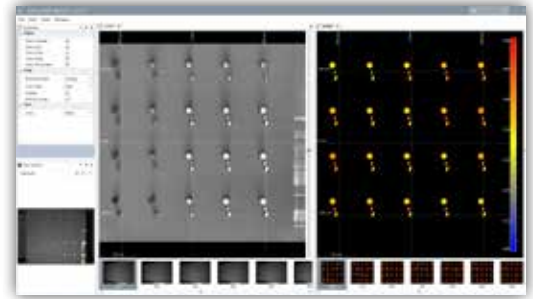
Blow mold with conforming holes in LaserForm Maraging Steel (B)



Topologically optimized rocker bracket in Certified Scalmalloy

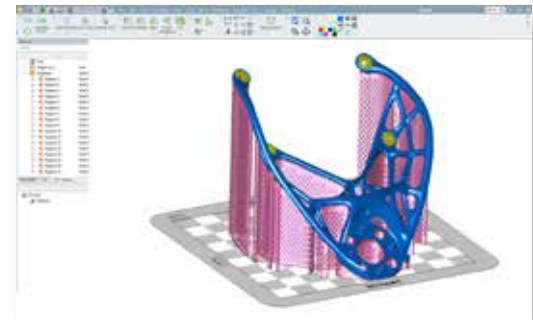


Injection molding tool with conformal cooling in Certified M789



DMP MONITORING FOR REAL-TIME PROCESS MONITORING

Advanced Manufacturing requires close monitoring of process variables. DMP Monitoring is a process monitoring and non-destructive quality control system, providing a wealth of data for informed decisions on product quality and also serving as process traceability and documentation for highly regulated industries.



FASTER DATA PREPARATION AND EXCEPTIONAL BUILD OPTIMIZATION

3DXpert software, 3D Systems' precision metal printing solution, is delivered with every DMP printer. Benefit from intelligent design tools and fast build preparation, relying on the extensively tested build parameter database for your material of choice. No other software lets you localize print strategies for increased precision of metal parts.

* Availability varies by printer model

Direct Metal Printers

Metal Additive Manufacturing with the DMP printer series



DMP Flex 100



DMP Flex 200

SPECIFICATIONS		
Laser Power Type	100W / Fiber laser	500W / Fiber laser
Laser Wavelength	1070 nm	1070 nm
Build Volume (X x Y x Z) Height inclusive of build plate	100 x 100 x 90 mm (3.94 x 3.94 x 3.54 in)	140 x 140 x 115 mm (5.51 x 5.51 x 4.53 in)
Layer Thickness	10µm - 100µm	10µm - 120µm
LaserForm® metal alloy choices with developed print parameters:	LaserForm CoCr (B) LaserForm 17-4PH (B) LaserForm 316L (B) LaserForm CoCr (C)	LaserForm CoCr (B) LaserForm Ti Gr5 (A) LaserForm Ti Gr23 (A)
Material Deposition	Roller	Roller
Repeatability	x=20 µm, y=20 µm, z=20 µm	x=20 µm, y=20 µm, z=20 µm
Minimum Feature Size	x=100 µm, y=100 µm, z=10 µm	x=100 µm, y=100 µm, z=10 µm
Typical Accuracy	± 0.1-0.2% with ± 50 µm minimum	± 0.1-0.2% with ± 50 µm minimum
SPACE REQUIREMENTS		
Dimensions, uncrated (WxDxH) ⁴	1210 x 1720 x 2100 mm (48 x 68 x 83 in)	1210 x 1720 x 2100 mm (48 x 68 x 83 in) + Chiller 377 x 521 x 650 mm (14.8 x 20.5 x 25.6 in)
Weight, uncrated	1300 kg (2870 lbs)	1400 kg (3086 lbs)
FACILITY REQUIREMENTS		
Electrical Requirements	230 V / 2.7 KVA / single phase	230 V / 4.5 KVA / single phase + chiller 1.2 KVA / single phase
Compressed Air Requirements	6-8 bar	6-8 bar
Gas Requirements	Nitrogen or Argon, 6-8 bar	Nitrogen or Argon, 6-8 bar
Water Cooling	Not required, air cooling included	Chiller supplied with printer
QUALITY CONTROL		
DMP Monitoring	na	na
CONTROL SYSTEM AND SOFTWARE		
Software Tools	3DXpert® all-in-one software solution for metal additive manufacturing	
Control Software	PX Control V3	PX Control V3
Operating System	Windows 10	Windows 10
Input Data File Formats	All CAD formats, e.g. IGES, STEP, STL, native read formats incl PMI data, all Mesh formats	
Network Type and Protocol	Ethernet 1 Gbps, RJ-45 Plug	Ethernet 1 Gbps, RJ-45 Plug
ACCESSORIES		
Interchangeable Build Modules	na	na
POWDER MANAGEMENT		
Powder Management	Optional external	Optional external
Material Loading	Manual	Manual
CERTIFICATION		
	CE	CE

¹ Maximum laser power at powder layer is typical 450W for 500W lasers ² Set up A ³ Set up B ⁴ Height exclusive of signal tower

Direct Metal Printers

Metal Additive Manufacturing with the DMP printer series



DMP Flex 350 and DMP Flex 350 Dual



DMP Factory 350 and DMP Factory 350 Dual

SPECIFICATIONS		
Laser Power Type	DMP Flex 350: 500W / Fiber laser DMP Flex 350 Dual: 2x 500W / Fiber laser	DMP Factory 350: 500W / Fiber laser ¹ DMP Factory 350 Dual: 2 x 500W / Fiber laser
Laser Wavelength	1070 nm	1070 nm
Build Volume (X x Y x Z) Height inclusive of build plate	275 x 275 x 420 mm (10.82 x 10.82 x 16.54)	275 x 275 x 420 mm (10.82 x 10.82 x 16.54 in)
Layer Thickness	Adjustable, minimum 5 µm, typical values: 30, 60, 90 µm	Adjustable, minimum 5 µm, typical values: 30, 60, 90 µm
LaserForm metal alloy choices with developed print parameters:	LaserForm Ti Gr1 (A) ² LaserForm 17-4PH (A) ³ LaserForm Ti Gr5 (A) ² LaserForm 316L (A) ³ LaserForm Ti Gr23 (A) ² LaserForm CoCrF75 (A) ³ LaserForm AlSi10Mg (A) ³ LaserForm Maraging Steel (A) ³ LaserForm AlSi7Mg0.6 (A) ³ Certified Scalmalloy ³ LaserForm Ni625 (A) ³ Certified M789 ³ LaserForm Ni718 (A) ³	LaserForm Ti Gr1 (A) ² LaserForm Ni625 (A) ³ LaserForm Ti Gr5 (A) ² LaserForm Ni718 (A) ³ LaserForm Ti Gr23 (A) ² LaserForm 316L (A) ³ LaserForm AlSi10Mg (A) ³ Certified Scalmalloy ³ LaserForm AlSi7Mg0.6 (A) ³ Certified M789 ³
Metal alloy options for dual laser configurations:	LaserForm Ti Gr5 (A) ² LaserForm Ti Gr23 (A) ² LaserForm AlSi10Mg (A) ³ LaserForm AlSi7Mg0.6 (A) ³	LaserForm Ti Gr5 (A) ² LaserForm Ti Gr23 (A) ² LaserForm AlSi10Mg (A) ³ LaserForm AlSi7Mg0.6 (A) ³
Material Deposition	Soft blade recoater	Soft blade recoater
Repeatability	Δx (3σ) = 60µm, Δy (3σ) = 60µm, Δz (3σ) = 60µm	Δx (3σ) = 60µm, Δy (3σ) = 60µm, Δz (3σ) = 60µm
Minimum Feature Size	200 µm	200 µm
Typical Accuracy	± 0.1-0.2% with ± 100 µm minimum	± 0.1-0.2% with ± 100 µm minimum
SPACE REQUIREMENTS		
Dimensions, uncrated (WxDxH)	2360 x 2400 x 2870 mm (93 x 95 x 113 in) ⁴	2360 x 2400 x 3480 mm (93 x 16 x 137 in)
Weight, uncrated	Approx. 4200 kg (9240 lbs)	Approx. 4900 kg (10800 lbs)
FACILITY REQUIREMENTS		
Electrical Requirements	400 V/15 KVA/50-60Hz/3 phase	400 V/15 KVA/50-60Hz/3 phase
Compressed Air Requirements	6-10 bar	6-10 bar
Gas Requirements	Argon, 4-6 bar	Argon, 4-6 bar
Water Cooling	Chiller supplied with printer	Chiller supplied with printer
QUALITY CONTROL		
DMP Monitoring	Optional	Optional
CONTROL SYSTEM AND SOFTWARE		
Software Tools	3DXpert® all-in-one software solution for metal additive manufacturing	
Control Software	DMP Software suite	DMP Software suite
Operating System	Windows 10 IoT Enterprise	Windows 10 IoT Enterprise
Input Data File Formats	All CAD formats, e.g. IGES, STEP, STL, native read formats incl PMI data, all Mesh formats	
Network Type and Protocol	Ethernet 1 Gbps, RJ-45 plug	Ethernet 1 Gbps, RJ-45 plug
ACCESSORIES		
Interchangeable Build Modules	Optional secondary Removable Print Modules (RPMs) for fast material changeover	Not applicable, targeted at volume production with one single material
POWDER MANAGEMENT		
Powder Management	Optional external	Integrated
Material Loading	Manual	Manual, Semiautomatic
CERTIFICATION		
	CE, NRTL	CE, NRTL

¹ Maximum laser power at powder layer is typical 450W for 500W lasers ² Set up A ³ Set up B ⁴ Height exclusive of signal tower

Direct Metal Printers

Metal Additive Manufacturing with the DMP printer series



DMP Factory 500

SPECIFICATIONS

Laser Power Type	3 x 500W / Fiber laser
Laser Wavelength	1070 nm
Build Volume (X x Y x Z) Height inclusive of build plate	500 x 500 x 500 mm (19.7 x 19.7 x 19.7 in)
Layer Thickness	Adjustable, min. 5 µm, max. 200 µm, typically 60 µm
LaserForm metal alloy choices with developed print parameters:	LaserForm Ti Gr23 (A) LaserForm AlSi10Mg (A) LaserForm Ni718 (A)
Material Deposition	Soft tube recoater
Repeatability	$\Delta x (3\sigma) = 75\mu\text{m}$, $\Delta y (3\sigma) = 75\mu\text{m}$, $\Delta z (3\sigma) = 75\mu\text{m}$
Minimum Feature Size	300 µm
Typical Accuracy	$\pm 0.1\text{-}0.2\%$ with $\pm 100 \mu\text{m}$ minimum

SPACE REQUIREMENTS

Dimensions, uncrated (WxDxH) ⁴	3010 x 2350 x 3160 mm (118.5 x 92.5 x 124.5 in)
Weight, uncrated	8232 kg (18148 lb)

FACILITY REQUIREMENTS

Electrical Requirements	400 V/20 KVA/50-60Hz/3 phase
Compressed Air Requirements	6-10 bar
Gas Requirements	Argon, 6-10 bar
Water Cooling	2 chillers supplied with printer

QUALITY CONTROL

DMP Monitoring	Included
----------------	----------

CONTROL SYSTEM AND SOFTWARE

Software Tools	3DXpert® all-in-one software solution for metal additive manufacturing
Control Software	DMP Software suite
Operating System	Windows 10 IoT Enterprise
Input Data File Formats	Native CAD files, STEP, IGES, ACIS Parasolid, STL
Network Type and Protocol	Ethernet 1 Gbps, RJ-45 plug

ACCESSORIES

Interchangeable Build Modules	Depowdering Module / Powder Recycling Module / Parking module / Transporter module / Removable Print Module
-------------------------------	---

POWDER MANAGEMENT

Powder Management	Powder Recycling Module
Material Loading	Manual, Semiautomatic

CERTIFICATION

CE, NRTL

¹ Maximum laser power at powder layer is typical 450W for 500W lasers ² Set up A ³ Set up B ⁴ Height exclusive of signal tower

Warranty/Disclaimer: The performance characteristics of these products may vary according to product application, operating conditions, material combined with, or with end use. 3D Systems makes no warranties of any type, express or implied, including, but not limited to, the warranties of merchantability or fitness for a particular use.

© 2021 by 3D Systems, Inc. All rights reserved. Specifications subject to change without notice. 3D Systems, the 3D Systems logo, ProJet, ProX, Accura, QuickCast and 3D Sprint are registered trademarks of 3D Systems, Inc.