

# SMART HOME PROJECTS



Follow us



HDL Automation

Website [www.hdlautomation.com](http://www.hdlautomation.com)

E-mail [sales@hdlautomation.com](mailto:sales@hdlautomation.com)



# Who we are?

**HDL Automation**, established in 1985, is a leading international technology company specializing in smart home, smart building, smart hotel solutions and total energy solutions. With a strong commitment to the market, we strive to deliver comprehensive automation control systems and integrated solutions for homes and buildings.

At HDL Automation, our core product portfolio encompasses a wide range of cutting-edge technologies. From smart lighting and smart shading to climate control, energy management, security monitoring, and audio-video entertainment, our solutions are designed to enhance comfort, convenience, and security.

With an extensive track record, our automation solutions have been successfully deployed in over 500,000 prestigious projects worldwide. We have large number of iconic project references, such as Dubai International Airport, NATO Headquarters Building, Australia Banc Apartment, Macau Morpheus Hotel, and the Czech State Opera.

By leveraging our expertise and innovative technologies, HDL Automation continues to lead the industry, providing seamless automation experiences that transform living and working spaces.

Since 1985, Your Reliable Partner







# CATALOG

## Mega Home Automation Projects

Sobha Hartland-Phase 3/Phase 4/Phase 5	01	MOTI TOWN Sukhumvit-Phraeksa	09
Banc Apartments	02	Mirabad Avenue	10
Sultan Villas	03	3L Apartment Tower	11
Wave Island Apartments	04	Beijing Linked Hybrid	12
Parcolago Apartments	05	Shenzhen Longhua Jinmao Palace	13
Novi Dorćol Complex	06	Guangzhou Yuexiu Tianyue Bay	14
Marvipol Unique Tower	07	Nanjing Greentown Tao Hua Yuan	15
Porto Palace	08		

## Standalone Home Automation Projects

Fountain View Duplex Apartment	16	Eye of Africa Villa	25
Eyremount Dr Luxury Villa	17	Casa Blanca Villa	26
Muti-dwelling Home	18	Karinas Apartment	27
Modern Penthouse	19	Bahria Town Villa	28
Mihalović Manor	20	Bo House	29
Private Residence	21	Beijing MIXHouse	30
MOCOLI House	22	Jing'an Prime Land Villa	31
Belgrade Luxury Villa	23	Shandong Hui Style Villa	32
Funkis Style Villa	24		



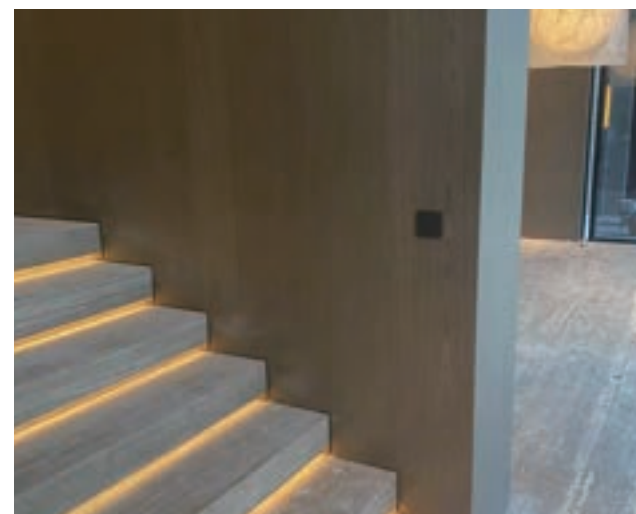


# Mega Home Automation Projects





Sobha Hartland-Phase 3/Phase 4/Phase 5



## Background

Sobha Hartland is a vast 8 million square feet waterfront community in Dubai, developed by Sobha Realty. Located near downtown Dubai, it offers residents easy access to top-tier lifestyle amenities such as fitness centers, health clubs, spas, and shopping malls, all within a short drive. In the third, fourth, and fifth phases of Sobha Hartland, HDL provided advanced home automation solutions.

## Pain point

With the sheer scale and luxury standards of Sobha Hartland, we faced the challenge of integrating both wired and wireless smart home technologies, ensuring seamless operation across 55 villas and maintaining the high-end aesthetic of the villas. Additionally, given the size of the project, a scalable and efficient installation process was crucial.

## Solution

HDL implemented its wireless home automation system across 55 villas. This included comprehensive lighting control—both switching and dimming functions—as well as climate control. The use of the iTouch Series Button Panels allowed for seamless integration with the villa's interior design, while LCD Touch Thermostats and mobile application connectivity gave residents easy access to controlling their environment.

## Effect

The successful integration of over 6,000 HDL products within Sobha Hartland underscores HDL's technological impact and broad applicability in large-scale projects. Residents now enjoy convenient and efficient control over their home environment, with smart systems that blend perfectly with the villa's luxurious design.





Banc Apartments



## Background

Australia Banc Apartment is one of Brisbane's premier luxury apartment buildings, meticulously designed for users who seek high-end living close to the city without being directly in its hustle and bustle. The building's impressive architecture and thoughtful design make it a standout addition to the Brisbane skyline. But beyond its aesthetic appeal, what truly sets Banc apart is the home automation system provided by HDL.

## Pain point

For a luxury apartment like Banc, conventional facilities fall short of expectations. Residents desire more than just beautiful interiors; they seek modern conveniences that align with their lifestyle, including seamless control over their living environment.

## Solution

HDL introduced the Buspro Wireless system to Banc Apartment, offering a user-friendly smart home solution. This system allowed for easy installation by simply replacing existing panels with HDL's smart ones, making it ideal for both new and existing buildings without the need for additional wiring. Users can effortlessly control air conditioning, lighting, and intercom systems through sleek panels or HDL ON app. Additionally, the system enabled users to set customized scenes, such as shutting down all apartment devices with a single button press when leaving home, adding both convenience and peace of mind.

## Effect

The integration of HDL Buspro Wireless system has significantly elevated the living experience at Banc Apartment. Residents now enjoy the luxury of controlling their environment with ease, whether through intuitive panels or their mobile phones.





## Background

Nestled in the heart of Antalya, Türkiye, Sultan Villas provides users with a luxurious retreat and easy access to the bustling Antalya City Center. Each villa is designed to offer a blend of modern amenities and comfort. To enhance the living experience, the villas were equipped with advanced smart home technologies, ensuring a seamless blend of convenience, luxury, and style.

## Pain point

The key challenge was to integrate the comprehensive smart home system for villas that could handle various functions, including lighting, climate, and entertainment controls, while maintaining a user-friendly interface.

## Solution

HDL implemented the Buspro system for the seven villas to provide complete control over each villa's environment. The solution included curtain control, lighting control, and music control, allowing for seamless integration of various villa amenities. The HDL Granite 4.3" and Tile Series panels were used throughout, with customized engravings on the Tile thermostat panel to enhance usability. For music and sound, HDL integrated Homeplay and HDL 6.5" speakers in three distinct areas within each villa. Moreover, HDL sensors enabled automatic lighting scenarios on the stairs. What's more, users can use HDL On App to control the Pool and landscape lighting in all villas, which is much more convenient.

## Effect

The integration of the HDL Buspro system elevated the luxury experience in Sultan Villas. Users now enjoy intuitive control over various villa functions, from lighting and climate control to music and ambiance.







## Background

Wave Island, located in Lido di Jesolo, Italy, is one of the most prestigious projects in the region. Comprising 169 luxurious apartments, the development features a stunning 2,000 square meter circular swimming pool with an artificial island at its center, evoking the luxury of a Caribbean resort. Each apartment offers spacious interiors with breathtaking views of the beach and pool, creating an unparalleled living experience in a dream-like setting.

## Pain point

The challenge was to integrate a smart home system that matched the luxury of the development, offering residents seamless control over their environment for a comfortable and convenient stay.

## Solution

HDL delivered a tailored KNX smart home solution for each apartment, elevating the living experience in Wave Island to new heights. Key features include:

- **Lighting and Blinds Control:** The solution featured DALI dimming modules and curtain controllers, allowing residents to effortlessly adjust the ambiance of their living spaces.
- **Climate Regulation:** By integrating LG heat pumps and fresh air systems, the smart home solution ensured automatic temperature regulation, humidity control, and ventilation.
- **Third-Party Integration:** The system also integrated various third-party devices, which offered the residents the flexibility to control their environment according to their preferences.

## Effect

HDL smart home system enhanced the luxury living experience at Wave Island, offering residents seamless control, comfort, and convenience in a stunning setting.







## Background

Parcolago Apartments, nestled in Paradiso, Switzerland, offer stunning views of Lake Lugano to the north and Monte San Salvatore to the south. The apartment complex is a blend of stylish architecture and serene natural surroundings, providing users with a luxurious and peaceful living experience.

## Pain point

It requires the smart home system that could handle the complexity of third-party integration and cater to the diverse needs of different proprietors while enhancing convenience and comfort.

## Solution

The KNX smart home solution was chosen to be used at Parcolago Apartment, allowing for flexible integration with various third-party systems. This setup ensured that users can enjoy a customized smart home experience tailored to their needs. The intelligent lighting control system, featuring DALI Gateways, enabled easy adjustments to brightness, color, and temperature while conserving energy. PIR sensors further enhanced the system by automatically adapting the lighting based on environmental conditions.

In addition to lighting, the smart shading control allowed users to manage curtains and blinds effortlessly. This feature ensured a harmonious balance between natural and artificial light, adding to the overall comfort and convenience of living at Parcolago Apartment.

## Effect

HDL smart home solution transformed Parcolago Apartment into a haven of luxury and convenience, allowing users to enjoy both the natural beauty of their surroundings and the enhanced comfort of a fully automated home.







Novi Dorćol Complex



## Background

Nestled in the heart of Belgrade’s historic industrial district, the Novi Dorćol Complex is a harmonious blend of contemporary architectural design and the charm of 19th-century buildings. This ambitious development is revitalizing the old city, with HDL tasked with the intelligent renovation of 400 apartments in the second phase, and an additional 900 apartments planned for the third phase.

## Pain point

The developers needed a smart home system that could seamlessly integrate into both the modern design and the historical elements of the Novi Dorćol Complex. The goal was to provide residents with smart control over their living spaces while preserving the architectural essence of the area. Additionally, the system had to cater to the growing demand for energy efficiency and environmental consciousness.

## Solution

HDL equipped all 1,300 apartments in the Novi Dorćol Complex with the comprehensive HDL Smart System. This system allowed users to effortlessly manage various aspects of their homes, including lighting, heating, cooling, blinds, ventilation, and water valves. What set this project apart was the integration of a meteorological station within the smart system, which monitored real-time data on wind speed and sunlight intensity. The system automatically adjusted the blinds based on these factors, enhancing comfort and optimizing energy usage.

For ease of use, users can control all these functions through a smart panel, a computer, or the HDL On Pro App. This user-friendly interface allowed for the customization of living spaces to suit individual preferences, making everyday life more convenient and enjoyable.

## Effect

With 1,300 apartments set to feature HDL smart home solutions, the Novi Dorćol Complex stands as a testament to HDL’s expertise and reliability in meeting the specific demands of the European market. This project not only showcases HDL’s ability to deliver sophisticated and dependable smart home systems on a large scale but also highlights how technology can be harnessed to transform living spaces while respecting and preserving the historical character of the area.



Serbia





## Background

Unique Tower is an exceptional apartment building situated in the heart of Warsaw. Renowned as one of the city's most prestigious and recognizable developments, this tower spans 29 floors. The first 17 floors feature compact apartments designed for short-term rental, while floors 18 to 29 house 48 high-end apartments ranging from 60 to 280 square meters. And these apartments are currently among the most luxurious and expensive in Warsaw.

## Pain point

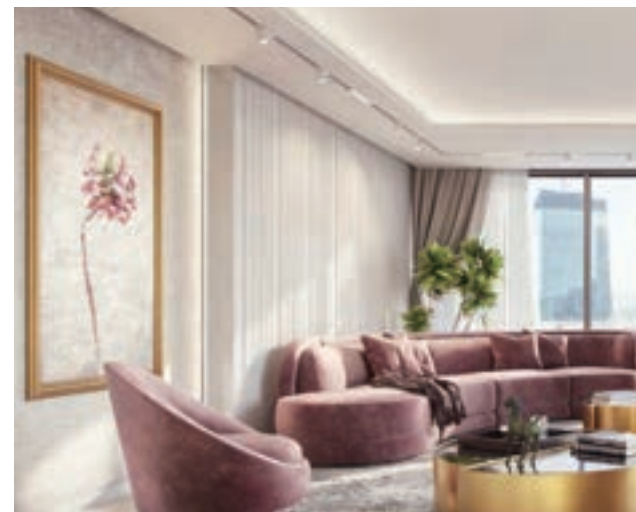
The solution needed to offer seamless control over various apartment functions, ensuring comfort, security, and convenience while preserving the building's luxurious aesthetic.

## Solution

HDL implemented a comprehensive KNX smart control system for each apartment within the Tower. The system offered advanced functionalities, including lighting control, blind control, air conditioning management. The HDL Tile Series Panels were utilized to provide an intuitive interface for managing all these features, ensuring a seamless blend of technology and user-friendly control. Residents now can enjoy effortless control over their living environment both locally through panels and remotely via a mobile app. To enhance safety, the system was integrated with motion sensors that can alert residents of any unusual activity and flood sensors that automatically shut off the water supply when flooding is detected.

## Effect

The integration of the HDL KNX smart control system transformed Unique Tower into a modern, automated living space, aligning with its reputation as one of Warsaw's most prestigious residences.







Porto Palace

## Background

The Porto Palace is located in Tivat, Montenegro, on the edge of the Porto Montenegro complex. This prestigious area features a mix of coastal luxury, with promenades, exclusive apartments, hotels, cafes, and restaurants. Porto Palace is distinguished by its exceptional design, which merges coastal and Mediterranean architectural styles. The building's aesthetic draws on the elegance of Mediterranean classicism and coastal architecture, creating a formal and luxurious appearance that complements its prime location.

## Pain point

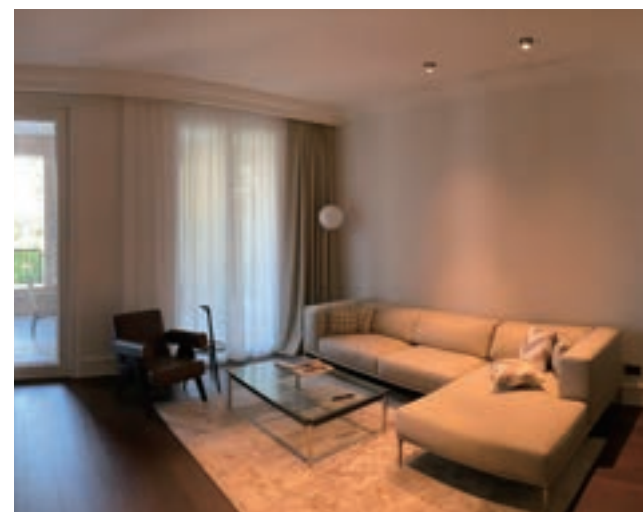
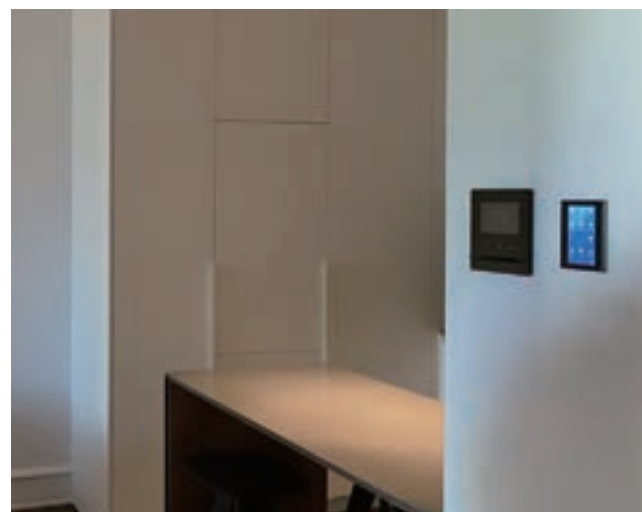
Matching the building's high-end aesthetic while enhancing the functionality and comfort of the residences is the main challenge for us.

## Solution

A complete smart home solution was provided for the Porto Palace, implementing a wide range of control features. This included lighting control, climate control, curtain control, boiler management and so on. The system was installed in 19 apartments (comprising one-room, two-room, and four-room configurations) as well as common areas, hallways, and stairs across all seven levels. Residents can manage their living spaces through Enviro panels.

## Effect

The implementation of HDL's smart home solution successfully enhanced the living experience at Porto Palace. It not only improved the functionality of individual apartments but also contributed to the overall sophistication of the building's common areas and amenities.







## Background

Located in Tai Ban Mai, Muang Samut Prakarn, MOTI TOWN is a residential development comprising 239 apartments that blend Modern Nordic design with smart home technology.

## Pain point

The project aims to enhance users' living experiences by integrating advanced smart home solutions while maintaining a budget-conscious approach.

## Solution

HDL addressed this challenge by utilizing HDL Zigbee system, known for its cost-effectiveness and ease of installation. By eliminating the need for extensive wiring, HDL reduced both setup complexity and installation costs, making the smart system accessible and user-friendly. The apartments were equipped with intuitive lighting and air conditioning controls, allowing users to easily create the desired ambiance and maintain comfortable temperatures.

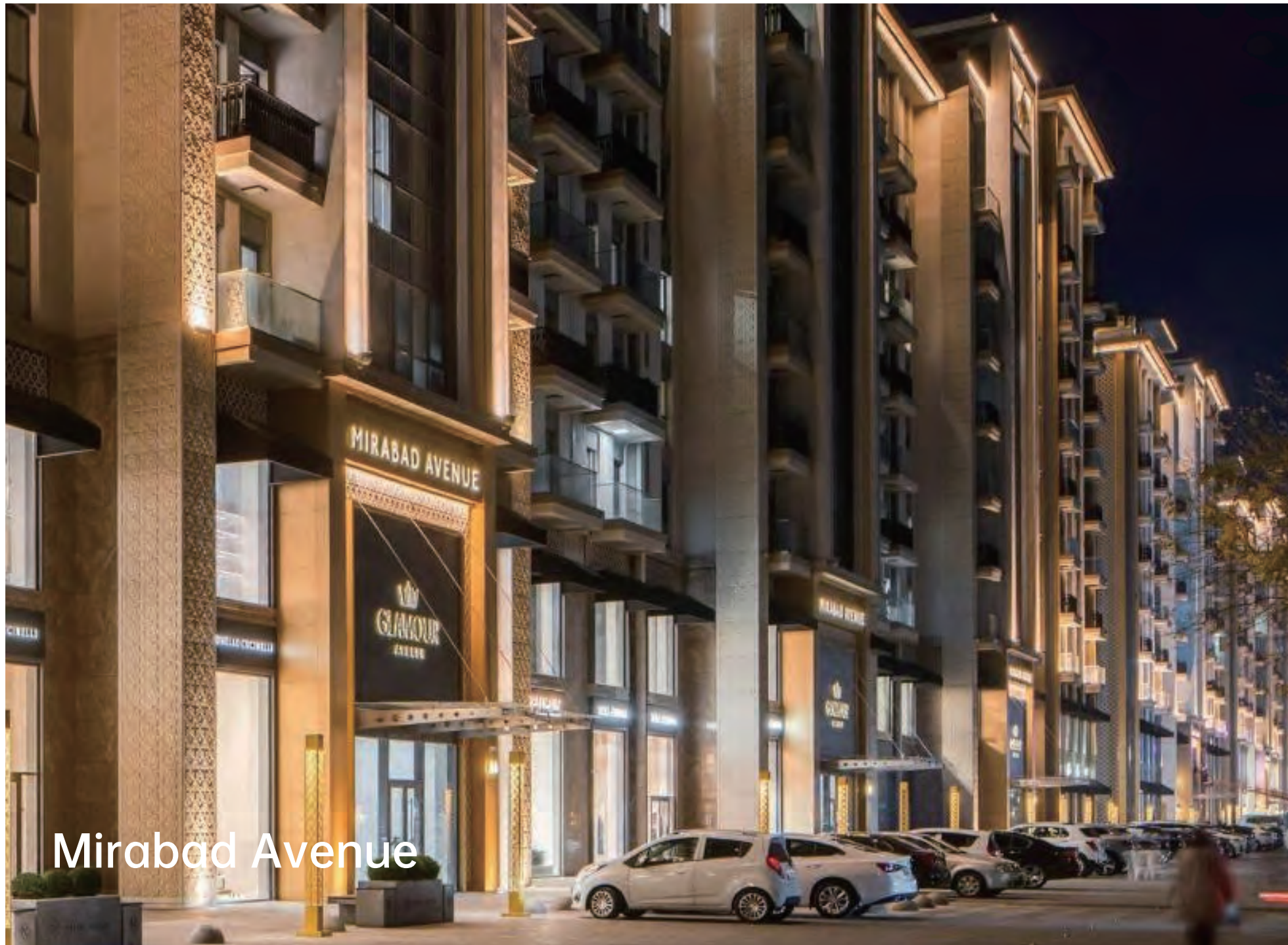
A standout feature of the MOTI TOWN project was the app-based remote control, enabling users to manage their home environment from anywhere. Whether it's turning off lights left on by mistake or adjusting the air conditioning before arriving home, the app provides residents with comprehensive control at their fingertips.

## Effect

MOTI TOWN showcases the successful integration of budget-friendly smart home solutions in a residential setting. The project's success highlights HDL's ability to deliver high-quality, cost-effective smart home systems.







Mirabad Avenue



## Background

Mirabad Avenue is Uzbekistan's first premium-class residence, a joint project with the renowned British architectural bureau Chapman Taylor. This innovative project is known for its unique design and new approach to space utilization. Additionally, Mirabad Avenue will feature the country's first shopping avenue, transforming one of the central streets of Tashkent into a vibrant area comparable to iconic streets like the Champs-Élysées, the Arbat, and Fifth Avenue.

## Pain point

The main challenge for this high-end project was integrating the comprehensive and scalable smart home system across 500 luxury apartments.

## Solution

To meet the project's demands, HDL implemented the KNX smart home system across all 500 apartments, providing the flexibility to expand functionality according to each user's needs. The Tile Series Climate Panel played a critical role, offering a minimalist design and an intuitive interface for controlling AC, heating, and ventilation systems independently. Additionally, the Tile Series Panels were selected for their sleek design, which perfectly complemented the apartment interiors.

## Effect

The successful implementation of the KNX system enhanced both the comfort and functionality of the luxury apartments. Residents now enjoy seamless control over their home environment, from lighting to climate management. Also, the scalable design of the smart home system allows for future upgrades, providing long-term value and convenience for the residents of Mirabad Avenue.





## Background

The Lincoln, Liberty, and Lexington Towers, collectively known as the 3L Tower, are three of the seven residential towers in the Podomoro City Deli Medan Superblock located in Medan, North Sumatra. This expansive development includes residential towers, an office building, and a shopping mall.

## Pain point

The developer needed to enhance the appeal of the 3L Tower units in a cost-effective manner, which required a simple yet efficient smart home solution that would not only add value to the residential units but also be easy to integrate with existing building infrastructure.

## Solution

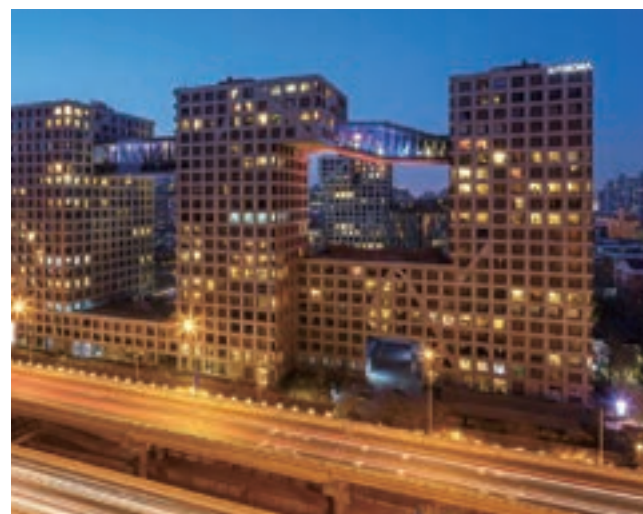
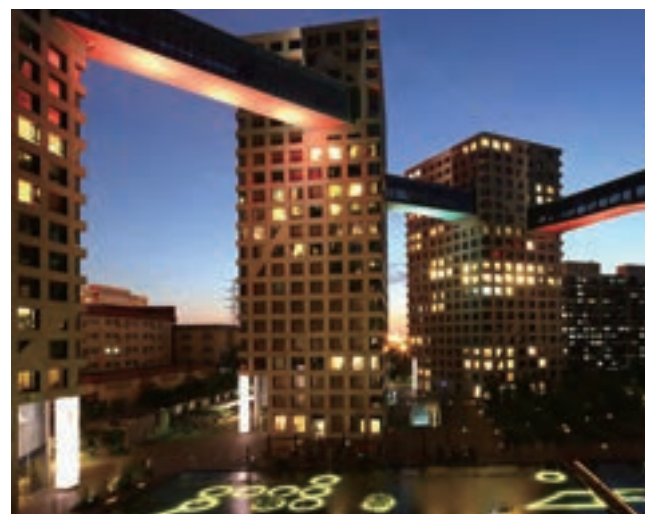
For this project, HDL chose a streamlined Buspro wireless solution. This allowed for effective lighting control and integration with the HDL ON app for remote management. The wireless setup minimized installation complexity and costs, making it an ideal choice for both the developer and the residents.

## Effect

By leveraging HDL Wireless products, the solution provided a cost-effective means to incorporate smart home functionality into mass residential projects like the 3L Tower. The simple yet effective lighting control enhanced the living experience, offering residents the convenience of managing their home environment effortlessly. Following this project's success, the developer is already planning to use HDL wireless solutions in their next apartment development.







## Background

The Linked Hybrid in Beijing spans 220,000 square meters and includes a diverse mix of residential apartments, a hotel, a cinema, a kindergarten, a school, an underground car park, commercial zones, and a public green space. Designed by Steven Holl Architects, the complex was named Best Tall Building 2009 in the Asia and Australia category by the Council on Tall Buildings and Urban Habitat.

## Pain point

To further enhance the property's commercial value and residential appeal, the developers sought to integrate a comprehensive smart home system into the apartments.

## Solution

HDL provided the complete HDL Buspro control system for 119 luxury apartments in the T7 and T8 buildings of the apartments. The system included intelligent control for lighting, music and curtains.

The lighting system featured 16 circuits, covering spaces such as the living room, dining room, master bedroom, water bar, and salon. This precise zoning allowed residents to customize lighting, curtains, music, and power supply according to various living scenarios, enhancing comfort and personalization.

At the entrance, the control panel offered precise management of different functional areas within the home. With home and away modes, users can control all devices with a single touch, improving both energy efficiency and convenience. The living room was equipped with a four-button panel that provided preset modes like movie mode, dinner mode, and party mode, which synchronize lighting, curtains, and music to create the perfect ambiance. In the bedroom, preset sleep and wake-up modes further enhanced the user experience.

## Effect

The smart home control system in all 119 luxury apartments in Beijing's Linked Hybrid have been successfully deployed. The system delivered intuitive and convenient smart controls, catering to diverse living needs and significantly improving the overall user experience.







Shenzhen Longhua Jinmao Palace

## Background

Shenzhen Longhua Jinmao Palace is situated in the heart of the Shenzhen-Hong Kong central axis, within the Longhua District of Shenzhen. With a total construction area of approximately 200,000 square meters, this project is positioned as the high-end smart residential community in the Guangdong-Hong Kong-Macao Greater Bay Area, setting a new benchmark for intelligent living.

## Pain point

The project aimed to provide residents with a comfortable and convenient smart living experience through an advanced intelligent control system.

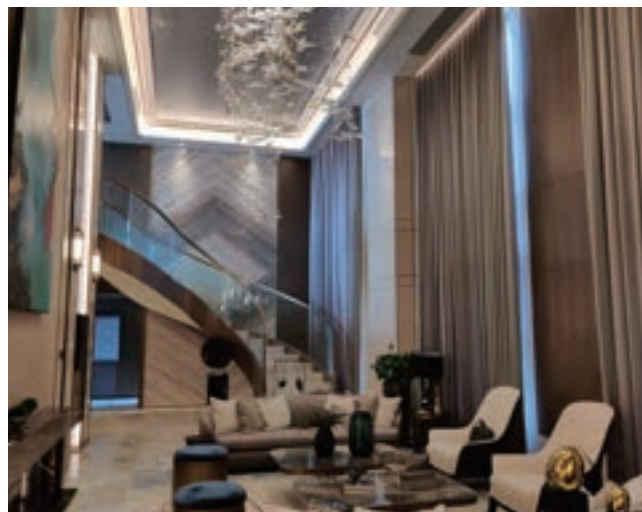
## Solution

HDL customized a comprehensive HDL KNX smart control system for 701 residential units in Shenzhen Longhua Jinmao Palace, creating a high-end residential community that integrated smart home and community features.

When the resident's vehicle enters the parking lot, the system displays available parking spots. It uses facial recognition to unlock the entrance door while summoning the elevator to the resident's floor. Residents can unlock doors via fingerprint, password, or other methods, triggering preset scenes with lights, music, and AC. What's more, the security system detects leaks, falls and unauthorized entry, automatically alerting property management. Additionally, residents can control all smart devices and access community services by simply calling "Maomao."

## Effect

The innovations of HDL KNX system not only offer residents the convenience of smart technology but also enhance the premium quality of Jinmao Palace.







## Background

The Yuexiu Tianyue Bay is located in the heart of Innovation Bay in Haizhu District, Guangzhou. Adjacent to the Haizhu National Wetland Park, Haizhuhu Park and Yingzhou Ecological Park, this project spans a total land area of 42,700 square meters. It is a collaborative masterpiece designed by renowned architect Janson Xian and HWCD, an international design company specializing in residential architecture and luxury interior designs.

## Pain point

The Yuexiu Property sought to enhance the convenience, safety, and comfort of apartments by integrating smart access control, smart security system, video intercoms, and smart home control system.

## Solution

For this project, HDL equipped all 571 residential units with the HDL Buspro Control System, focusing on optimizing the living experience while enhancing the entry experience. Here are the key features of the solution:

- **Seamless Access Experience:** The lobby was equipped with a video intercom and intelligent elevator control system, offering residents a fully automated, touch-free access experience.
- **Enhanced Safety and Comfort:** HDL integrated a variety of sensors throughout the residences and public areas, including gas sensors, motion sensors, and air quality sensors, to ensure a safe and comfortable living environment.
- **Multiple Control Interfaces:** The system supported various types of interaction—panel control, voice control, app control—enabling intelligent management of lights, curtains, AC, heating, and smart door locks.

## Effect

The HDL Smart Home Solution has enhanced the technological sophistication of the residential units, boosting the property's competitive edge while laying a foundation for future value-added services.





## Nanjing Greentown Tao Hua Yuan



### Background

Tao Hua Yuan Villa Complex is nestled within the Tangshan Hot Spring Resort in Nanjing, covering a total area of 540 acres. The project integrates traditional Chinese garden-style living with the natural landscape, offering residents a high-quality living environment that reflects the essence of Chinese classical garden design. The name "Taohuayuan" means utopia or peace blossom land.

### Pain point

It's aimed to develop the villa complex into a premier residential community that balances intelligent comfort, scientific management, and eco-friendly, low-carbon living.

### Solution

HDL provided a comprehensive smart control system for 100 villas within the Tao Hua Yuan. This centralized control system integrated and managed the entire villa's lighting, shading, AC, music, and security devices, enabling whole-house management. With the motion detection sensors, the system realized the energy-efficient lighting control and intrusion detection with alert functions. In case of an emergency, the system automatically triggers an alert, sending notifications to the homeowner's mobile device for a timely response.

What's more, as a standard feature of high-end living, HDL designed a multifunctional private theater for each villa, which enabled residents to enjoy professional audio-visual entertainment and an immersive viewing experience from the comfort of their own homes.

### Effect

The quality of living in Tao Hua Yuan is highlighted by the meticulous craftsmanship in the pavilions and towers and the intelligent customization of the villa and courtyard areas. The application of HDL smart home solutions enhances the project's differentiation and boosts its brand competitiveness in the real estate market.





# Mega Home Automation Projects

Emirates Hills Villas, Dubai  
S Tower Residential Building, Dubai  
31 Broadbeach Residential Building, Australia  
Chester & Ella Apartments, Australia  
Warrawee Villas, Australia  
Cesar's Residence Apartments, Bosnia and Herzegovina  
The Rise Makati Building, Philippines  
Luxury Residences, Croatia  
Opera Residential Area, Romania  
G+8 Apartment Building, Morocco  
Avenue Polanco, Mexico  
SETAI Apartment, South Africa  
Vortex Student Apartments, Switzerland  
Solar Valley, Serbia  
Ex ing Home 65 Apartments, Serbia  
Green Hill Residences, Serbia  
Airport Garden, Serbia  
Ruba Jeddah Real estate, Saudi Arabia  
The Strand Luxury Apartments, Thailand  
MRT Malatya Luxury Apartments, Türkiye  
Tentrem Suites Apartment, Indonesia  
Tribeca Northern & Southern Towers, Indonesia  
EMPIRE Apartment Tower, Indonesia  
Calanova Apartments, Italy  
Tongzhou MOMA, Beijing  
COFCO Xiangyun Town, Beijing  
Shoucheng Longxi, Beijing  
Taihu Jinmao Yue, Beijing  
Chongqing Wanhua Luyue Jiangcheng, Chongqing  
International Cruise City Apartments, Xiamen  
Rongqiao Jiangnan Water Town, Fuzhou  
Jinhui Huai'an Peninsula, Fuzhou  
Jinmao Mansion, Longhua, Shenzhen

Qianhai Plaza A2 Apartments, Shenzhen  
Asian Games Technical Officials Village, Guangzhou  
Jinmao Bay A3/A4 Buildings, Guangzhou  
Fangyuan Xingyu Moon Island, Guangzhou  
China Communications Construction International Cruise Plaza, Guangzhou  
Nansha Bay Yuyuan, Guangzhou  
Zengcheng Chuangji Tianfeng, Guangzhou  
Yuexiu Huadu Zhenyue Mansion, Guangzhou  
Changlong Heyue Mansion, Guangzhou  
Pinxiu Xingyue Phase IV, Guangzhou  
Jinhui Huiyi Yunting, Foshan  
Wugang Mountain Villa Apartments, Foshan  
Lecong Zhengrong Mansion, Foshan  
Guowei Central Plaza, Zhuhai  
Cha'an Jinmao Yue, Foshan  
Tianhe Heyue Mansion, Guangzhou  
Guangbai Haigang City, Guangzhou  
Panyu Changlong Plot 103, Guangzhou  
Panyu Changlong Plot 111, Guangzhou  
Lecong Linglan Garden, Foshan  
Jiahe City High-end Villas, Nanning  
Jinhui Guiyang Jiuhua Linyun Building 18, Guiyang  
Luhar Port Future City, Tangshan  
Southeast Intelligent City, Shijiazhuang  
Chang'an Jinmao Yue, Shijiazhuang  
Jinmao Longhe New City, Langfang  
Jianye Tianzhu, Shangqiu  
Jianye Park, Shangqiu  
Beilong Lake No.14, Zhengzhou  
Jianye Wanbang, Zhengzhou  
Jianye Ruiyuan, Zhengzhou  
Jianye Chengyuan, Zhengzhou  
Jianye Film Town Chengyuan, Zhengzhou

Jianye Blue Ocean Zhengfeng, Xinzheng  
Jianye Changjian Park, Xinyang  
Jianye New Park, Xinxiang  
Jianye Puyang Shihe Mansion, Puyang  
Jianye Dengfeng Songyue Mansion, Dengfeng  
Jianye Zunfu, Xinyang  
Jianye Zhenyue Club, Xuchang  
Jianye Zhoukou Shiyue Mansion, Zhoukou  
Jianye Tianzhong Mansion, Zhumadian  
Yalong Bay No. 1, Sanya  
Wuhan Tiandi Yunyan  
Wuhan Xinghua Shangdu International  
Wuhan Binjiang Jinmao Mansion Buildings 6 and 7  
Wuhan Fangdao Jinmao Smart Science City  
Wuhan Binjiang Jinmao Mansion Buildings 8 and 9  
Meixi Huafu, Changsha  
Jinmao Jianfa Boyue, Changsha  
Runhe Binjiang Bay Buildings 5 and 6, Changsha  
Poly Tianyue, Nanjing  
Winking Lanyue Qiyuan, Nanjing  
Shimao G11, Nanjing  
Haiyue Mingdu, Suzhou  
Taihu New City, Suzhou  
Zhoushan River Project, Taizhou  
Spring and Autumn Jinmao Mansion, Changzhou  
Hexi Jinmao Mansion, Nanjing  
Fengcheng Jinmao Mansion, Taizhou  
Qinhuai Jinmao Mansion, Nanjing  
Nantong Rugao Jinmao Ruiyuan, Nantong  
Jinmao Nanjing G81, Nanjing  
Jinmao Nanjing Hexi G12, Nanjing  
Jintang Jinmao Yue, Chengdu  
Wuhou Jinmao Mansion, Chengdu

Huayang Jinjiang Building D Apartments, Chengdu  
Shandong Huading Mansion, Laizhou  
Lixia Jinmao Mansion Project, Jinan  
Jinmao Jinan Shenwu B9 Plot, Jinan  
Ruian Cuihu Tiandi, Shanghai  
Shanghai Haoting Phase III, Shanghai  
Luxiang Garden, Shanghai  
Tuo Wen Cake House Inn, Shanghai  
Tomson Goldbridge Garden, Shanghai  
Tianyue Junting, Shanghai  
Tianyi Youth Activity Center, Xi'an  
Jinhui Real Estate New World, Xi'an  
Evergrande Mansion, Taiyuan  
Jinmao Mansion, Taiyuan  
Changfeng Jinmao Yue, Taiyuan  
Central Mansion, Tianjin  
Tianluo St. Regis, Lijiang  
Danuo Ark Tiandi Loft Apartments, Kunming  
Jiah Lake Xixiang Garden, Kunming  
Jinmao Yiting, Kunming  
Wujia Dam Jinmao Plaza, Kunming  
Longjiang Jinmao Mansion, Kunming  
Longjiang Jinmao Mansion, Kunming  
Hangzhou Tangchao Serviced Apartments, Hangzhou  
Greentown Hangzhou Qianchao Bay, Hangzhou  
Wangting Center, Hangzhou  
Lucheng Jinmao Mansion, Wenzhou  
Jiushan Jinmao Mansion, Wenzhou  
Yangfan Real Estate Senran Farm Club, Taizhou  
Rong'an Changfeng Project, Ningbo  
Rong'an Wangzhuang Ningbo Ningchuan Road Project, Ningbo  
Rong'an Ningbo Yaojiang Project, Ningbo



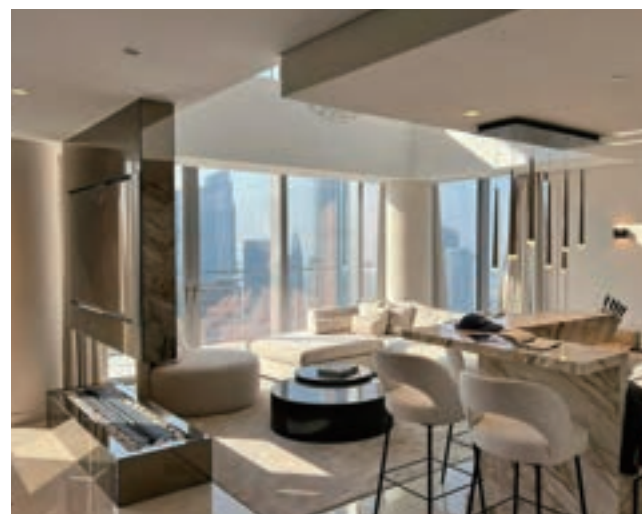


## Standalone Home Automation Projects





## Fountain View Duplex Apartment



### Background

Situated in downtown Dubai, this duplex apartment is just steps away from the various hotspots of Dubai, including Dubai Mall, Dubai Opera House and Souk al Bahar. From its high floor positioning, the apartment offers incredible views over the iconic Burj Khalifa and the vibrant Dubai Fountains. As part of the Address Residence Fountain Views, this duplex apartment has been styled with the signature quality of this revered hospitality brand.

### Pain point

For a residence of such caliber, maintaining a perfect balance of comfort, style, and efficiency is essential. The challenge was to deliver a smart home solution that would not only complement the luxurious aesthetic of the apartment but also enhance the daily living experience by seamlessly integrating key functions such as lighting, climate, and curtain control.

### Solution

HDL addressed these needs by implementing a comprehensive automation system that integrated lighting, climate, and curtain control, all managed effortlessly through the Enviro Touch Screen and the HDL On Pro.

- **Lighting Control:** Residents can easily adjust lighting for any mood, with on/off and dimming options. The system also used sensors to automatically adjust lighting based on natural light levels, conserving energy.
- **Climate Control:** The climate system ensured ideal temperatures year-round, all controllable via the touch screen or app for maximum comfort.
- **Curtain Control:** Automated curtain control allowed for effortless management of natural light and privacy, enhancing the overall living experience.

### Effect

By integrating lighting, climate, and curtain control, we have created a living space that adapted to the needs of its residents while promoting energy efficiency. With the convenience of the Enviro Touch Screen and On Pro, managing your home environment has never been easier or more efficient.





Eyremount Dr Luxury Villa



## Background

Situated in West Vancouver, Canada's richest city, the Eyremount Dr luxury villa is an exquisite property in the prestigious British Properties community. This \$15 million villa spans 1,022 square meters, featuring 5 bedrooms, 8 bathrooms, a courtyard, a kitchen, a recreation room, and other luxurious facilities.

## Pain point

The villa's expansive layout and multitude of features presented a challenge in terms of managing and controlling various aspects of the home environment. The villa needed an intelligent system that not only simplified the control of these various elements but also enhanced the living experience by providing tailored comfort and convenience for each family member.

## Solution

HDL delivered the intelligent control over all aspects of the home with smart home solution. The system covered lighting control, where it not only handled basic functions like switching lights on and off but also allowed for adjusting the color and brightness to create different atmospheres. Each area, including curtains, air conditioning, and floor heating, was controlled separately to cater to the preferences of different family members.

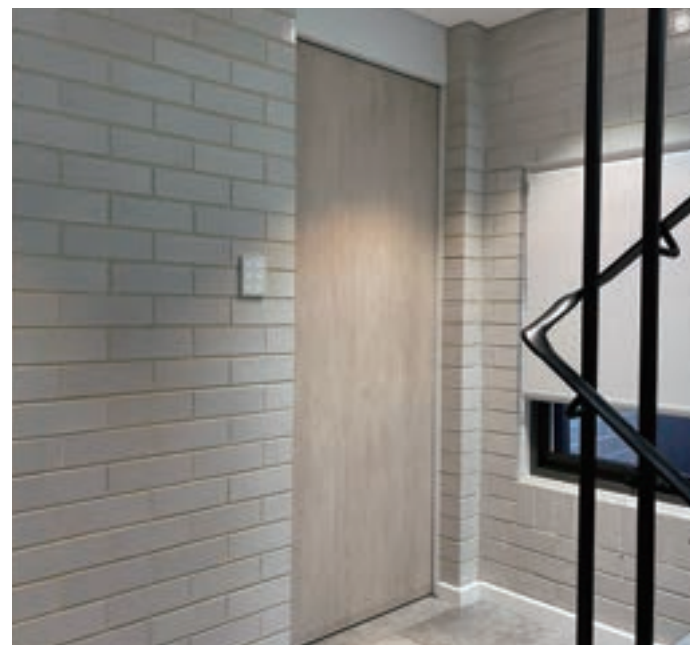
For entertainment, the HDL HomePlay music player enabled segmented control of stereo surround sound across 14 regions, providing a personalized music experience throughout the villa. The system also integrated advanced video entertainment, including a projection system for an immersive movie-watching experience. Intelligent controls extended to the shower, sauna, jacuzzi, and swimming pool, managing water amount, temperature, steam, and even lighting color in the pool.

Security was another crucial component, integrating a DSC security system and nine surveillance cameras for real-time monitoring. Smart garage doors and locks further ensured the safety of the household. Voice control integration with Alexa, alongside intuitive smart panels like the HDL Enviro and Granite series Panel, offered various modes of control, allowing the owner to manage the home environment effortlessly.

## Effect

The implementation of the HDL smart home system transformed the Eyremount Dr villa into a haven of luxury, comfort, and convenience. Each automated feature reflects the owner's attention to detail and commitment to providing a haven of comfort and well-being for the family.





## Background

Located at 2A & 2B Gladstone Street in the peaceful suburb of Concord, Sydney, Australia, these duplex homes offer a stylish and modern living environment. The homeowner sought a comprehensive smart home solution to enhance the convenience and comfort of their residences.

## Pain point

Meeting the homeowner's expectations for advanced automation while maintaining ease of use and energy efficiency was a primary concern.

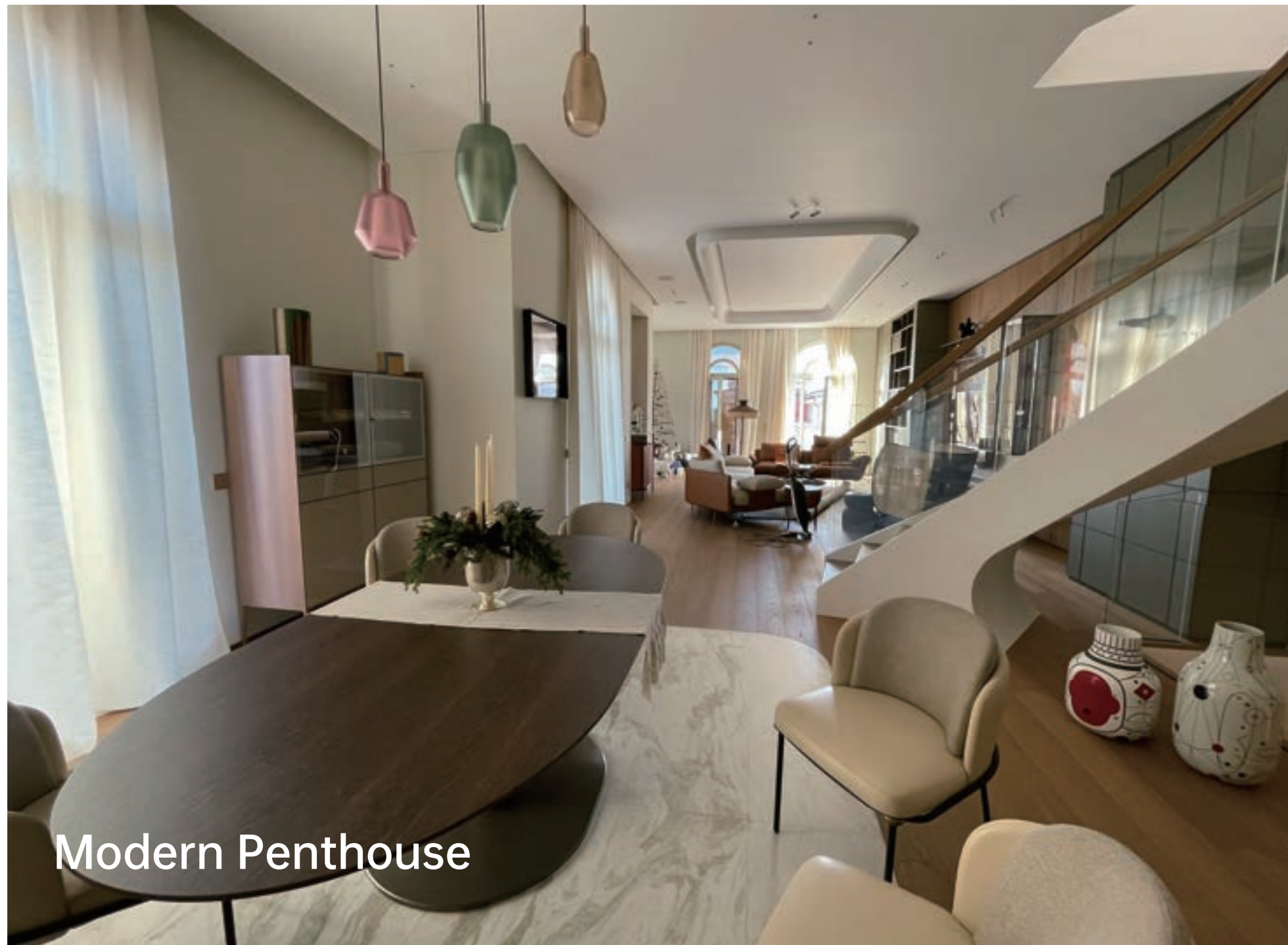
## Solution

HDL addressed the homeowners' needs through the smart home solution. The system provided complete control over lighting, allowing adjustments in intensity, color, and automated responses to external conditions like cloudy days. Shading control was integrated, enabling effortless management of blinds and curtains to balance privacy and natural light. The climate control system automatically adjusted the AC, heating, and ventilation, shutting off when windows were left open and notifying homeowners via their phones. Additionally, the system seamlessly integrated with third-party security systems, offering easy arming and disarming and alerting homeowners of any unauthorized access.

## Effect

The result was a smart home environment that exceeded the homeowner's expectations, offering unparalleled convenience, comfort, and security. The seamless integration of advanced technology created a living space that was both highly functional and user-friendly, enhancing the overall quality of life for the residents.





Modern Penthouse



## Background

Gravina, celebrated for its rich heritage and scenic beauty, provides the ideal setting for a penthouse that harmoniously blends modern technology with the charm of its historic surroundings.

## Pain point

The integration was needed to maintain the aesthetic qualities of the building while enhancing functionality, security, and overall living convenience.

## Solution

HDL implemented the Buspro system to create a fully automated living space, controlling everything from heating, ventilation, and air conditioning to shading and security. The integration with Tecnoalarm, RTI Control supervision system, and Dahua cameras provided a robust security solution, ensuring comprehensive protection for the apartment. Aesthetic considerations were paramount, leading to the selection of the Elit for Tile series for European power outlets, which ensured seamless and visually appealing integration of control and service units.

## Effect

The project successfully merged modern technology with historic elegance, resulting in a smart home that offers unparalleled convenience, security, and efficiency. The careful integration of HDL products enhanced the apartment's functionality while delivering an elevated living experience.





Mihalović Manor



## Background

Mihalović Manor, a historic estate dating back to the late 16th century, stands as a testament to baroque-classicist architecture and the cultural richness of its era. Preserving this heritage while integrating modern technology was a challenge, but in partnership with HDL, the manor has embraced the future without losing its historical charm.

## Pain point

The transformation of Mihalović Manor presented several challenges, including evolving architectural visions and complex wiring issues. Our goal was to merge the manor's classic aesthetics with smart home technology without compromising its historical integrity. This required a delicate balance between maintaining the building's character and implementing advanced systems.

## Solution

HDL addressed these challenges by integrating smart home technology into the manor's historic framework. The project utilized HDL Enviro and iTouch panels, which blended effortlessly with the manor's classic decor, offering centralized control over lighting, temperature, audio, intercoms, and access. The comprehensive automation extended across the entire manor, covering lighting, heating, cooling, and music systems. Real-time monitoring of air conditioners, heat pumps, boilers, and heating stations ensured efficient and comfortable living conditions. Furthermore, the integration of third-party products like Daikin heat pumps, Hoval boilers, Salda heat recovery units, and Casa Tunes audio system also showcased HDL's capability to harmonize modern technology with historical settings.

## Effect

The project was completed to perfection, overcoming all challenges, and the result has been met with positive feedback. The manor now stands as a symbol of how history and innovation can coexist, providing the users with both the charm of the past and the comforts of the present.





Private Residence

## Background

In the Czech Republic, a stunning private villa offers an unparalleled living experience where technology and nature harmonize perfectly. Nestled within lush greenery, this opulent residence features amenities such as an indoor swimming pool, tranquil lakes, and captivating landscapes.

## Pain point

The owners needed a solution that would integrate seamlessly with the villa's design, offering comprehensive control over various functions without compromising the serene and elegant environment.

## Solution

Utilizing the KNX system, the villa's lighting, heating, and blinds were seamlessly controlled to create an effortlessly comfortable environment. Motion sensors throughout the home added a layer of intuitive control, automatically adjusting lighting as needed. Additionally, the villa's ambiance was elevated with premium audio products, ensuring an immersive entertainment experience.

The integration of Granite Display and Push Buttons Panels brought both elegance and functionality to the villa's interior. These panels provided easy control over the various scenes and settings within the home, allowing residents to customize their environment with a simple touch. Furthermore, the open KNX protocol enabled seamless integration with third-party systems like Yatun, Control 4, and ABB, as well as weather stations and audio controls, enriching the overall smart living experience.

## Effect

With its seamless integration of KNX system, premium amenities, and attention to detail, this luxury residence epitomizes the pinnacle of comfort and convenience in residential living.







MOCOLI House



## Background

Situated on the Mócoli Island, known for its upscale developments, Mocoli House is a two-floor residence that exemplifies luxury and technology. Spanning 595 square meters, it includes a hall, dining room, kitchen, five bedrooms, a guest bedroom, a pool, and a garden.

## Pain point

The builder and owner of Mocoli House had exacting demands, requiring both operational excellence and aesthetic perfection. They sought a home automation solution that would not only meet their high standards but also seamlessly integrate with the residence's minimalist design.

## Solution

Implementing the comprehensive Buspro system throughout Mocoli House, HDL provided advanced home automation and control. This system facilitated On-Off LED lighting control, dimming control, enabling the creation of tailored atmospheres for various occasions. The installation of 8-in-1 sensors in each area further enhanced energy efficiency and convenience by automatically adjusting lighting based on occupancy. Additionally, HDL system managed the control of pool pumps and garden irrigation, ensuring optimal operation and maintenance.

The smart home experience was further enriched through seamless third-party integrations. This included the integration of KECO for curtain control, Alexa for voice-activated commands, and Hikvision security cameras for comprehensive surveillance. The entire system could be effortlessly managed via the HDL On App, Alexa, and Touch panels like the Enviro smart panel and iTouch Panel, providing users with a unified and user-friendly control experience.

## Effect

Mocoli House showcases how modern architecture and smart home technology can come together to create a living space that is not only beautiful but also highly functional. Through HDL solution, the residence not only meets the high expectations of its owners but also enhances their everyday living experience with advanced, integrated technology.





Belgrade Luxury Villa



Background

Situated in Belgrade, this expansive 1,500 square meter villa features a comprehensive layout including a basement with an eight-car garage, laundry room, gym, spa, and wine cellar. The ground floor includes living spaces, a study, and a dining area, while the first floor is dedicated to family quarters with multiple bedrooms, bathrooms, and a terrace. The second floor offers additional guest rooms, bathrooms, terraces, and a living room.

Pain point

Managing the diverse and extensive functions of such a large villa required an integrated smart home system capable of handling complex control tasks across multiple areas and subsystems, ensuring both operational efficiency and enhanced comfort.

Solution

The HDL smart home system managed indoor and outdoor lighting, temperature, curtains, heat accumulators, and heat pumps. S10 panels were used to control all devices within the system. Each room was equipped with Granite series panels for localized control of heating, cooling, lighting, and blinds. Given the numerous devices, the system was primarily managed through preset scenes. The entire system could also be controlled via a mobile app for added convenience.

Effect

The implementation of HDL smart home system significantly enhances the villa's functionality by streamlining the management of various subsystems. This not only improves daily living comfort but also contributes to substantial energy savings, ensuring a sophisticated and efficient home environment.



Serbia





Funkis Style Villa



## Background

Sarpsborg, Norway, is known for its rich history and natural beauty, offering a serene yet modern lifestyle. Nestled in this picturesque setting is a contemporary "funkis style" villa that demanded an automation solution befitting its architectural elegance and the surrounding landscape.

## Pain point

The customer wanted complete control over all aspects of the house, including lighting, climate, security, and pool management, with a focus on reliability, fast response, and versatility.

## Solution

HDL Buspro system was implemented to fully automate the villa. Enviro panels were installed to control all functions. Humidity sensors managed ventilation in the bathrooms, sauna, and pool area. Curtain controllers operated the pool cover, sliding doors, and wine cellar door. Lighting was controlled through panels and PIR sensors, while specific outlets were turned off when the house was empty to reduce fire hazards. What's more, the outdoor lighting was automated with sunrise/sunset timers, greatly enhancing the energy efficiency. Integration with iRidium Lite allowed the customer to access all functions remotely.

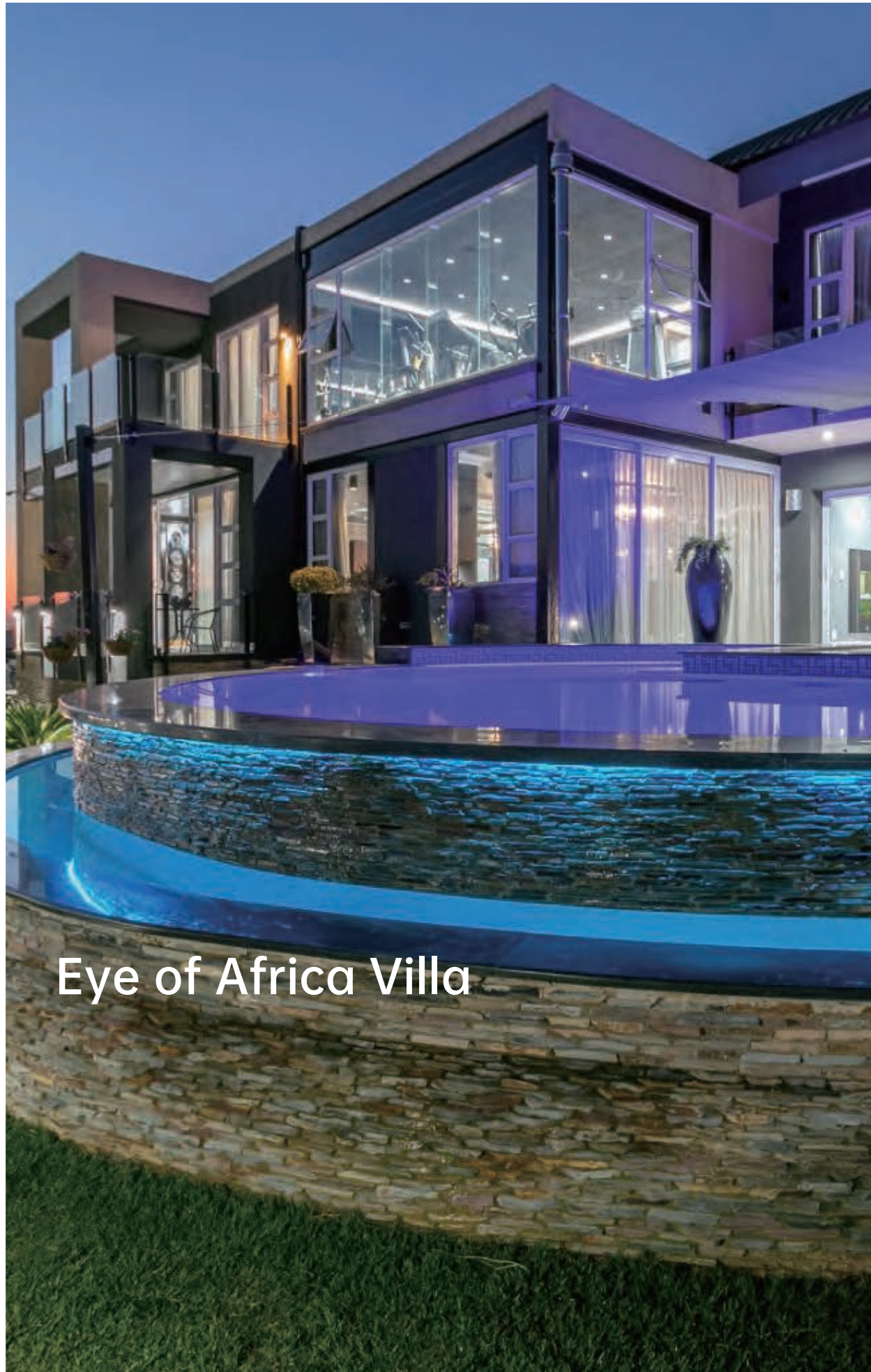
## Effect

The HDL system provided a complete and reliable automation solution, offering the customer full control over their home. The versatile system not only enhanced comfort and safety but also demonstrated HDL Buspro system's ability to integrate with third-party systems, creating a unified smart living experience.



Norway





## Background

Nestled on the exclusive Panorama Drive in South Africa's Eye of Africa, this contemporary home spans over 1,100 square meters across three levels—ground, underground, and top floor—the residence boasts 360-degree panoramic views of its breathtaking surroundings. The house is elegantly adorned with Versace tiles and wallpapers, crystal chandeliers, and exquisite art pieces, creating an opulent living experience.

## Pain point

Given the extensive use of high-end finishes and the owner's desire for aesthetic harmony, the smart home solution needed to be both discreet and sophisticated.

## Solution

HDL implemented a smart home control system for the residence, covering music, air conditioning, and curtain control to achieve seamless automation. Through the use of dimming modules and sensors, HDL provided intelligent, automated control across all areas of the villa. The sensors detected the lighting conditions in each zone, adjusting illumination to match the environment and the resident's presence. Music control throughout the house allowed the owner to enjoy soothing tunes in any area. For the swimming pool, a customized intelligent lighting system was installed, enabling the owner to activate the pool lights with an indoor control panel, offering an inviting ambiance for nighttime swims.

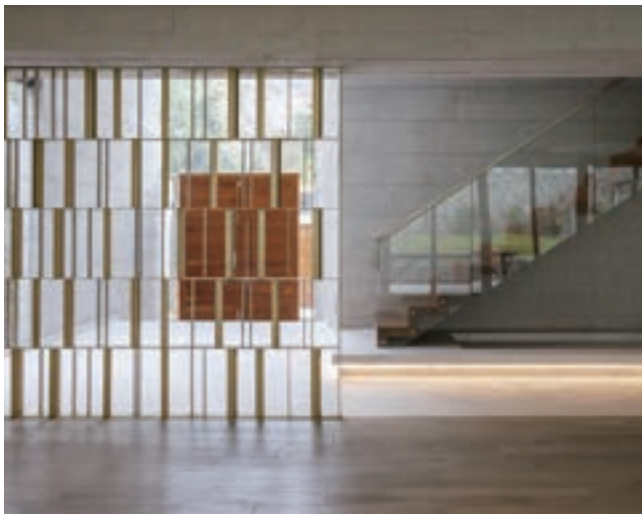
## Effect

The integration of HDL smart home system elevated the living experience within this luxurious residence. The intuitive controls and seamless automation enhance daily comfort while preserving the house's artistic aesthetic.





Casa Blanca Villa



## Background

Casa Blanca, a distinguished residence in Lima's most elite neighborhood, underwent a significant modernization project. Spanning 1,000 square meters of total area and 450 square meters of constructed space, this luxurious home features a main house with two floors and an additional clubhouse.

## Pain point

The renovation presented a challenge in seamlessly integrating multiple systems into a cohesive smart home network. Given the scale and complexity of the project, there was a need for a solution that could efficiently unify various technologies, ensuring a smooth and intuitive user experience.

## Solution

We delivered a comprehensive automation solution for Casa Blanca using HDL Buspro wired system. This included precise lighting control with 64 relays and 15 dimming circuits, an integrated sound system with music players, and a smart cinema setup in the media room. We centralized access control to manage various intercoms and locks, enhanced security with intrusion and leak alarms, and regulated climate through infrared emitters to control AC and heating. Additionally, automated roller blinds were installed for convenience and energy efficiency.

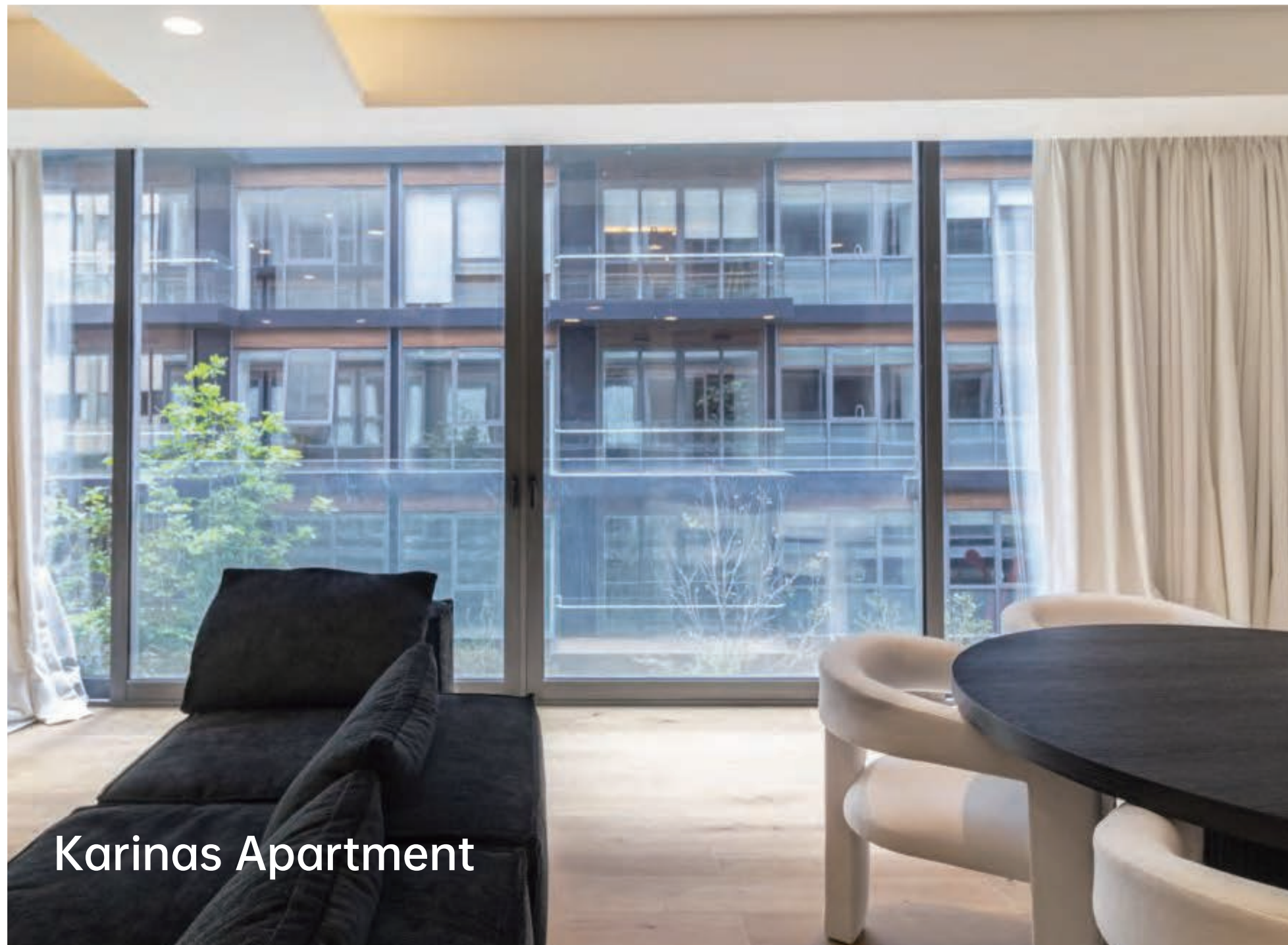
## Effect

The implementation of this comprehensive automation system has significantly enhanced the functionality and comfort of Casa Blanca. The unified system not only simplifies daily operations but also integrates various technologies into a cohesive experience.



Peru





## Background

Polanco, one of Mexico City's most fashionable and upscale neighborhoods, is synonymous with luxury and modern living. Located on Polanco, Karinas Apartment embodies a blend of sleek, glamorous architecture and a dynamic mix of modern and classic styles.

## Pain point

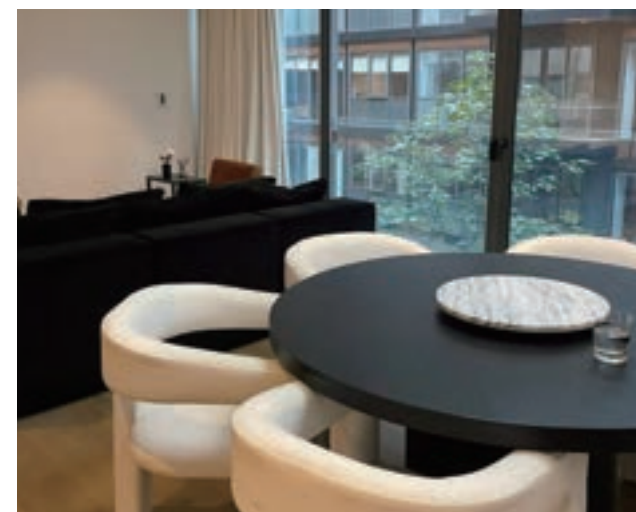
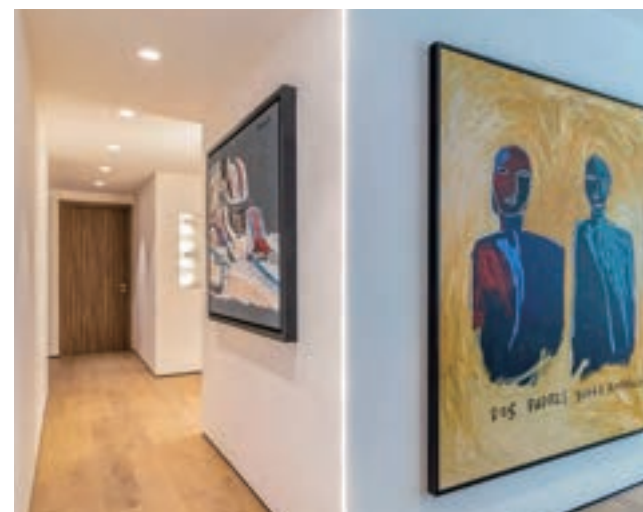
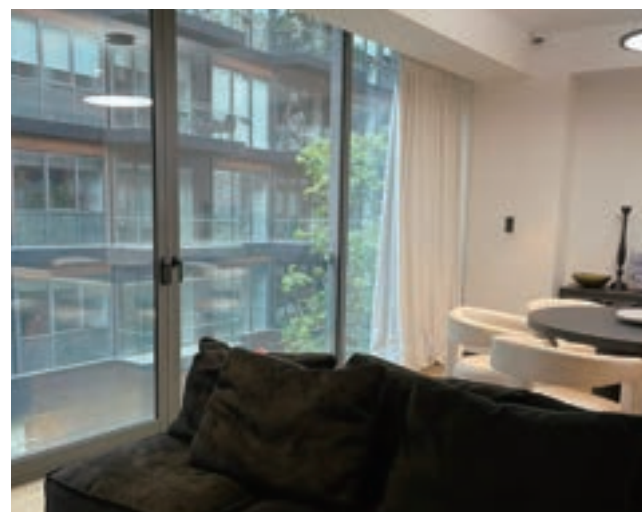
The solution needed to balance simplicity and innovation, delivering both visual appeal and functional comfort.

## Solution

The advanced home automation system provided full control over intelligent lighting, audio-visual systems, and shading, seamlessly integrating third-party devices such as Yale door locks, speakers, and televisions. By incorporating various scene control modes tailored to the resident's lifestyle, the system offered intuitive control for different occasions. The Granite Display, iTouch Series Button Panel, and DLP Touch Panel were adopted for effortless control of the above functions.

## Effect

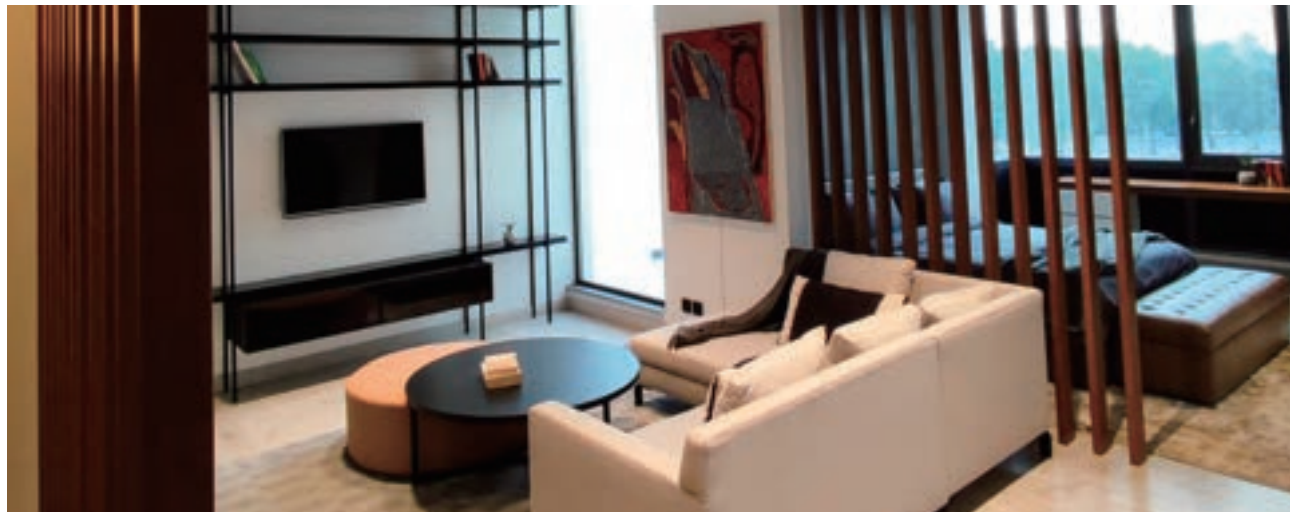
By focusing on visual, thermal, and acoustic comfort, the system catered to the inhabitants' needs, providing a tailored living environment that adapts to various scenarios. The result is an intelligent, functional space that captures the essence of luxurious living in Polanco, allowing residents to enjoy every moment in their dream apartment.







Bahria Town Villa



## Background

Bahria Town Villa is a sprawling modern residence spanning over 2,000 square meters, crafted by Pakistan's leading architectural firm SRDW and interior design company Sadia Rasheed Interiors. It stands as one of the most luxurious villas in the city, breaking new ground as the first residential project in Pakistan to employ such extensive automation.

## Pain point

The villa's expansive size and diverse functional areas required a seamless, centralized automation system.

## Solution

HDL provided a comprehensive automation solution using DALI technology, motion sensors, and logic control modules. All public areas were automated through timers and sensors, eliminating the need for control panels. The intelligent lighting, music, and curtain systems offered convenience and energy efficiency, enhancing the overall ambiance. The integration of motion sensors ensured that lighting and music operated only when needed, adding to the villa's sophistication while reducing energy consumption. The Granite Display panels were chosen for their elegant appearance and versatile functionality, allowing for centralized control of the devices. Moreover, Enviro Panels were installed on every floor to manage both indoor and outdoor devices, with all settings accessible via the HDL On App.

## Effect

Overall, the smart system not only elevated the villa's aesthetic appeal but also creates a living space that is highly responsive, comfortable, and efficient.







## Background

Located in Manila, Philippines, Bo House was designed by the talented architects Anna and Miguel. It has been recognized in leading local architecture and construction magazines. Its design philosophy emphasizes a humanistic and sustainable approach, aiming to create a living space that promotes well-being for both the residents and the environment.

## Pain point

Manila's hot climate presented a significant challenge, demanding innovative solutions to maintain comfort and efficiency. The need to harmonize home automation with the architectural design to address these weather-related issues and ensure energy efficiency was critical.

## Solution

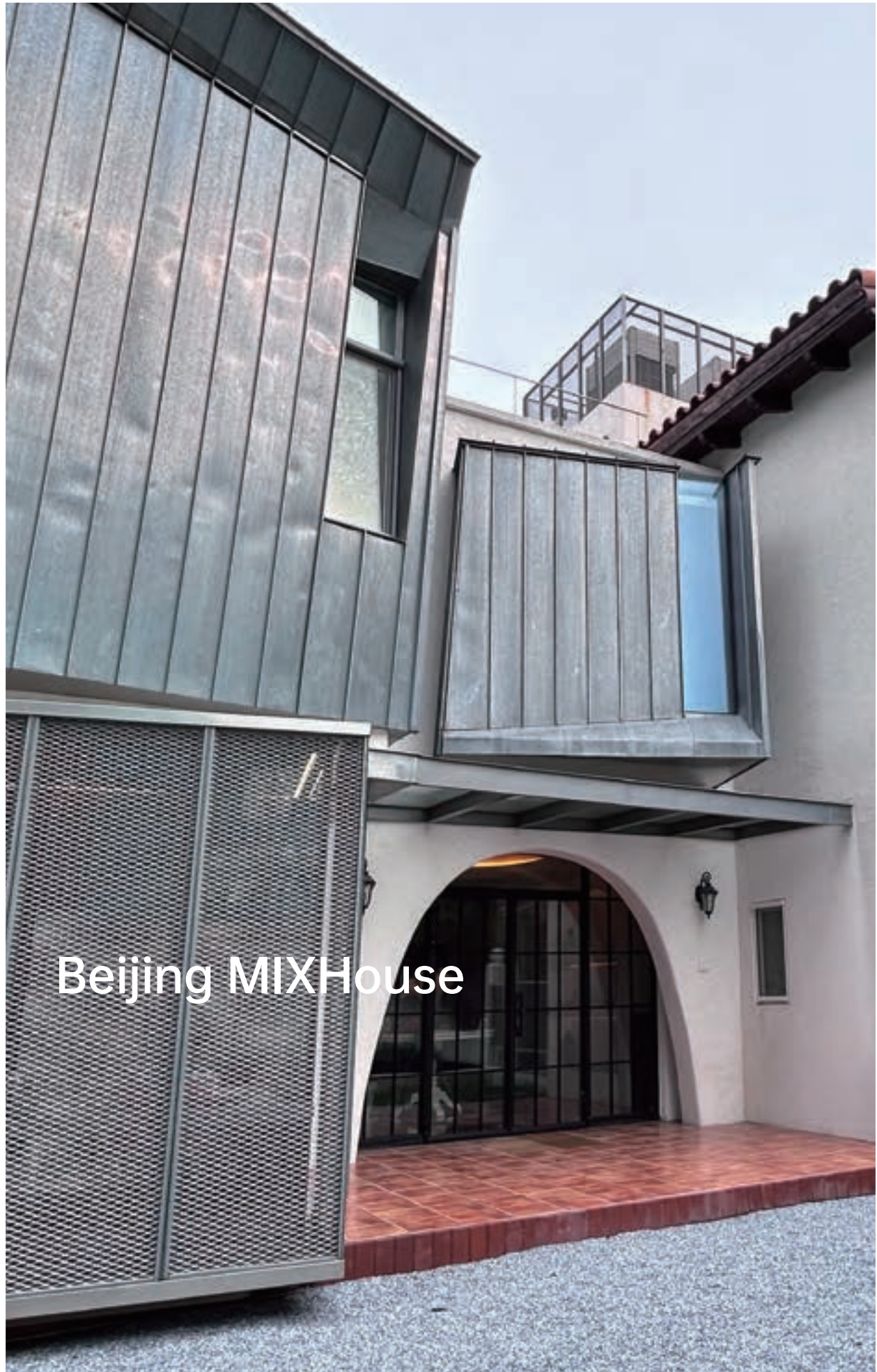
The integration of HDL home automation played a crucial role in overcoming these challenges. HDL system controlled air conditioning and ventilation to maintain a comfortable environment, automatically adjusting based on the time of day and whether windows were open. The HDL logic module also managed curtains to block excessive heat. The On Pro App also allowed homeowners to remotely manage their environment, including turning on the air conditioning before arriving home.

## Effect

The innovative use of HDL smart home solution addressed the challenges posed by Manila's climate while enhancing the overall living experience. This project also underscored the value of integrating advanced automation with thoughtful architectural design to create a harmonious and efficient living space.







Beijing MIXHouse



## Background

The MIXHouse is a private residential renovation standalone villa on the outskirts of Beijing, designed by architect Wang Quan. The 1,200 square meter space includes living areas, a workshop, and a party room. The design is rooted in the philosophy of structuralism, with Wang Quan and his team meticulously designing. This approach allows the three distinct themed areas within the house to seamlessly connect, offering the flexibility to be used separately or as a unified whole.

## Pain point

The architect aimed to fuse different functions and styles within the villa, pushing the boundaries of design while integrating smart lighting and control systems in a seamless and innovative way.

## Solution

To meet the architect's vision, we tailored different scene modes and lighting controls for various areas of the villa. In the dining room, users can switch between different scenes using the Tile Series Button Panel, depending on their dining needs. The dining room also doubled as a bar, where the HDL DMX Controller enables dimming and the creation of dynamic lighting atmospheres.

In the bedroom, users can switch between wake-up, sleep, and movie modes with a single touch, controlling lights, curtains, and other devices effortlessly. The party room was equipped with a one-touch KTV mode, where lighting synced with the music, creating an immersive experience. Additionally, users can use the Granite Display to swipe and adjust the background colors. Throughout the villa, HDL sensors were installed to automatically detect movement and control the lights accordingly.

## Effect

The HDL smart control system has successfully met the client's diverse lighting needs, seamlessly integrating various functions and controls to enhance the overall living experience.





Jing'an Prime Land Villa



## Background

Jing'an Prime Land is located in the heart of Shanghai's central business district, at the intersection of Wenshui Lu and Pinglu Lu. This landmark development covers nearly 700,000 square meters, making it the first international residential complex in the city center in the past decade. The indoor floorage for this project spans about 300 square meters, offering a blend of luxury and modern living.

## Pain point

The challenge was to implement an advanced smart home system that could seamlessly integrate with various control interfaces, while enhancing the living experience with versatile lighting and ambiance control.

## Solution

The project employed a range of HDL smart panels and dimming modules, integrated with third-party products for voice and app control. The combination of Tile Series Panels and Granite Display allowed users to control lighting and curtains effortlessly. The DALI dimming module offered precise control over individual lights in specific zones, including luminance and color temperature adjustments. For other areas, SCR dimming modules were used to simplify wiring and maintain an aesthetic environment. Additionally, HDL programmed preset scenes like "movie mode" that allowed users to create an immersive atmosphere with a single tap on the control panel. Remote access via a mobile app further enhanced convenience, enabling users to set the lighting in advance when returning home late at night.

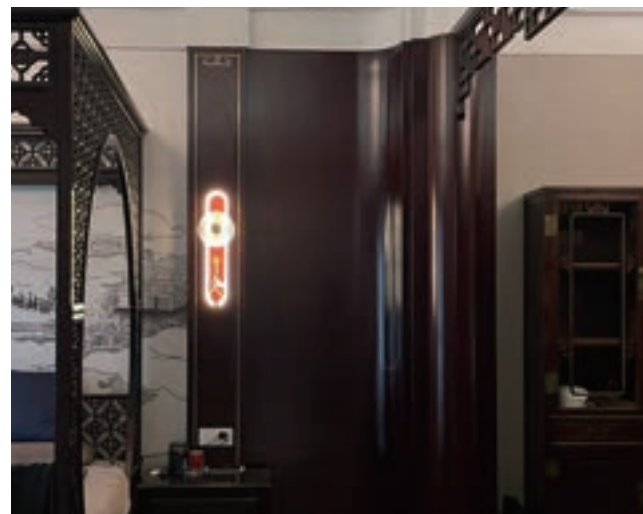
## Effect

HDL smart home system has transformed the villa into a high-efficiency, user-friendly environment. It not only meets the client's desire for a convenient smart lifestyle but also enriches daily living experiences by offering customizable settings for various moods and activities, ensuring a luxurious and comfortable home.





## Shandong Hui Style Villa



### Background

Hui-style architecture, a significant chapter in China's architectural history, is renowned for its distinctive traditional Chinese style. Mr Zhou, an architect, transformed his private residence into a model of Hui-style elegance, integrating automation technology simultaneously.

### Pain point

With a total area of 800 square meters, Mr Zhou demanded a balance between structural integrity and functional living spaces. He wanted to integrate traditional furniture with modern smart home technology, ensuring the functionality and aesthetics aligned with contemporary living needs.

### Solution

After carefully analysing the villa, HDL designed a smart lighting system that alleviated the solemnity associated with traditional Chinese furniture, infusing the entire home with an enhanced sense of enjoyment. To enhance convenience, we integrated HDL video intercom system, allowing users to see and communicate with visitors at the door in real-time, even from the basement, using the Source 7 Touch Panel. In order to complement the villa's interior style, HDL employed the Source 7 and Tile Series Button Panel to achieve whole-house lighting control, enabling voice commands, one-touch switches, and scene changes.

Moreover, a cherished habit of Mr Zhou and his wife is leaving a light on for each other when one returns late at night. This tradition continues in their new home, now made easier with the HDL smart lighting system. We programmed the Source 7 panels to include a "Leave a Light On" scene—by simply touching a button, lights in the multifunctional basement, living room, and dining area gradually dim, leaving only a warm glow in the entrance hall.

### Effect

The Hui-style elegance has been masterfully revived in Shandong, through the collaboration with HDL smart home solutions. This villa not only stands as a typical representation of Chinese design but also bridges the past culture with the present technology, allowing history to converse with modernity.





# Standalone Home Automation Projects

Al Ghurair Villas, Dubai  
Rashid Ahmed Al Abbar Villas, Dubai  
Ruler Family Villas, Dubai  
Luxury Villas, Abu Dhabi  
Nad Al Shiba Villas, Dubai  
AL Mizher Villas, Dubai  
Villa 67, Dubai  
C80 Villas, Palm Jumeirah, Dubai  
Detached House 26, Australia  
Detached House 55, Australia  
Alex West Villas, Egypt  
Zayed City Villas, Egypt  
Stone Park Detached Houses, Egypt  
Sodic Villas, Egypt  
Dokki Private Villas, Egypt  
Madinaty Villas, Egypt  
New Cairo Villas, Egypt  
Smart Villas, Egypt  
Sofia Villas, Bulgaria  
Miqdad Villas, Pakistan  
AK Private Residence, Pakistan  
BK Private Residence, Pakistan  
IQ Private Residence, Pakistan  
Rashel FR Luxury Villas, Pakistan  
Shabbir Luxury Villas, Pakistan  
Sufyan Villas, Pakistan  
Rashel Modern Villas, Pakistan  
Smart Apartments, Minsk, Belarus  
Wooden Houses, Belarus  
Private Villas, Bolivia  
Woodland Villas, Ecuador  
Suburban Villas, Ecuador  
PIPHOME Residential, Ecuador  
Duplex Villas, Ecuador  
Luxury Villas, Ecuador  
LUMBSI Villas, Ecuador  
Don Miguel Private Villas, Philippines  
Westgrove Villas, Philippines  
Private Apartments, Colombia  
Luxury Villas, Netherlands

Modern Villas, Netherlands  
Holiday Villas, Netherlands  
Mountain Luxury Villas, Kazakhstan  
Three-Story Residential, Northern Canada  
Montroyal Villas, Canada  
Luxury Villas, Cambodia  
ONC Villas, Cambodia  
King A Villas, Cambodia  
Private Villas, Cambodia  
Seaside Villas, Croatia  
Cakovec Apartments, Croatia  
Zagreb Apartments, Croatia  
Luxury Villa, Latvia  
Villa Montana 338, Mexico  
Las Lomas Apartments, Mexico  
Polanco Apartments, Mexico  
Casablanca Villa, Morocco  
Johannesburg Villa, South Africa  
Riaan Herman Villa, South Africa  
Duplex Apartment, Serbia  
Duplex Villas, Saudi Arabia  
Jeddah Apartments, Saudi Arabia  
DR Manal Villa, Saudi Arabia  
Ghnati Private Villa, Saudi Arabia  
AlAnsari Villa, Saudi Arabia  
DR Hana Villa, Saudi Arabia  
Moaz Private Villa, Saudi Arabia  
Abo Aljoud Villa, Saudi Arabia  
Alsalam Villa, Saudi Arabia  
Alghanmi Villa, Saudi Arabia  
Salem Banafi Villa, Saudi Arabia  
Dr Fadi Villa, Saudi Arabia  
Abo Husam Khorshed Villa, Saudi Arabia  
Dr Daous Villa, Saudi Arabia  
Motirie Villa, Saudi Arabia  
Baghlaf Villa, Saudi Arabia  
Alfageer Villa, Saudi Arabia  
Alshourem Villa, Saudi Arabia  
Alzareh Villa, Saudi Arabia  
Ahmed Alfouzan Villa, Saudi Arabia

Al-Harbi Villa, Saudi Arabia  
Joshua Private Apartment, Sri Lanka  
Private Villa, Cyprus  
Private Luxury Villa, Yenicoy, Türkiye  
BigHeads Apartment, Ukraine  
Abdullatef Villa, Syria  
Celestia Duplex Penthouse, Singapore  
Orakei Penthouse, New Zealand  
Residential Home, Italy  
Gravina di Puglia Villa, Italy  
NARDI Bari Villa, Italy  
Andriani Four-Story Apartment, Italy  
Al-Amrea Villa, Italy  
Detached Luxury Villa, Iraq  
Erbil Detached Villa, Iraq  
Private Residence, Indonesia  
PIK Jakarta Villa, Indonesia  
SAKURA Villa, Indonesia  
Dago Pakar Private Villa, Indonesia  
Citra Fine Residence, Indonesia  
DE CAJUPUTI Private Residence, Indonesia  
SCARLET Villa, Indonesia  
SJ Mansion, Indonesia  
Residential Home, Scotland  
Luxury Penthouse Apartment, Israel  
Vintage Villa, Israel  
Paz Villa, Israel  
Savien Luxury Apartment, Israel  
Luxury Apartment, Israel  
Tel Mond Villa, Israel  
Private Villa, Huangshan, Anhui  
Anli Home Flat, Anhui  
Biguiyuan Flat, Anhui  
Anliang Huai'an Flat, Anhui  
Quanshan Lake Villas, Anhui  
Chinese Villas, Anhui  
Jindi Yalan Mountain Villas, Anhui  
Financial Family Flats, Yunnan  
Shunshan Mingdi Flats, Anhui  
Zhongnan Manyue Bay Flats, Anhui

Emerald Manor Villas, Anhui  
Xinda Park Flat, Hefei, Anhui  
Jinmao Yishu Villas, Beijing  
Poly Golf Villas, Beijing  
Guo'ao Village Seven-Story Villas, Chongqing  
Oriental Venice Villas, Fuzhou  
Yaju Le Villas, Guangzhou, Guangdong  
Private Resort Club Villas, Guangdong  
Luxury Villas by the Lakeside, Guangdong  
Villa No. 1 at Qiantang Lake, Guangdong  
Weigang Villas, Guangdong  
Emerald Bay Villas, Guangdong  
R&F One Peninsula, Guangdong  
Edinburgh Villas, Heilongjiang  
Designer's Home, Heilongjiang  
Villa No. 29 in Yalong Bay, Hainan  
Yuwai Sailing A-985, Lingshui, Hainan  
Wanda Plaza Community Flats, Wuhan  
Qibin Meishu Banquet Villas, Hunan  
Villas, Linwu County, Hunan  
Hengda Venice Villas, Jiangsu  
Bangchuidao Villas, Liaoning  
No. 1 Village Villas, Sichuan  
Yashifangzhou Villas, Shandong  
Courtyard West Courtyard, Shandong  
Yulan Garden He Garden Villas, Shandong  
Mingyue Mountain Villa Area, Jinan, Shandong  
Qingzhao Mansion Villa Area, Jinan, Shandong  
Villa at 890 Julu Road, Shanghai  
Lujiazui Riverside Arc de Triomphe Flat, Shanghai  
CR Land Central Park Luxury, Shanghai  
Bund Detached Villas, Shanghai  
Tomson Riviera Villas, Shanghai  
Zhenye Villas, Xi'an  
Hongjin City Romani Community, Xi'an  
Qujiang South Lake No. 9 Flat, Xi'an  
Miele Lake Spring Bay No. 1 Villas, Zhejiang  
Jintong Mansion Villas, Yunnan  
Villas, Dongyang, Yunnan  
Rose Garden Villas at Thousand Island Lake, Yunnan