



BINOCULAR MICROSCOPE



COMPOUND MICROSCOPE



DISSECTION MICROSCOPE



CENTRIFUGE MACHINE



HIGH SPEED CENTRIFUGE



CENTRIFUGE TUBE



SPOT / CAVITY PLATE



COUPLIN JAR



DISSECTION BOX



GANONG POTOMETER



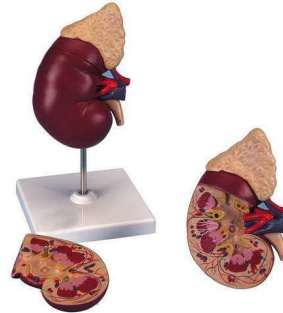
HUMAN EAR MODEL



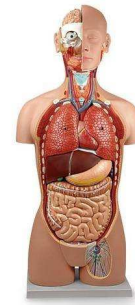
HUMAN EYE MODEL



HUMAN HEART MODEL



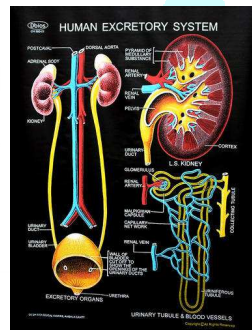
HUMAN KIDNEY MODEL



HUMAN TORSO



HUMAN SKELETON ON STAND
SUPERIOR QUALITY



REXINE CHART – KIDNEY



REXINE CHART – PLANT
DISEASES



MICROTOME



AUTOMATIC SLIDE
PROJECTOR



SLIDES & COVER SLIPS



SLIDE MAILER



WATCH GLASS

SL. NO.	ITEM DESCRIPTION	SL. NO.	ITEM DESCRIPTION
BI 01	ANTI A.B.D. (Blood Group Test Kit)	BI 15/3	10"x12"
BI 02	BONE CUTTER (Stainless Steel) 6"	BI 15/4	12"x18"
BI 03	CAMERA LUCIDA	BI 15/5	18"x24"
BI 03/1	Prism Type in Velvet Box	BI 15/6	9"x11"
BI 03/2	Mirror Type in Velvet Box	BI 15/7	12"x15"
BI 04	CAVITY PLATE/ SPOT PLATE (Porcelain)	BI 15/8	15"x18"
BI 04/1	6 Cavity	BI 16	ENAMEL BOWL
BI 04/2	12 Cavity	BI 16/1	12CM
BI 05	CAVITY SLIDE Glass (Pack of 10)	BI 16/2	14CM
BI 05/1	Single Cavity Slide	BI 16/3	16CM
BI 05/2	Double Cavity Slide	BI 16/4	20CM
BI 06	CHART STORAGE STAND (METALLIC) 24 Charts	BI 17	ENAMEL MUG
BI 07	COVERSLIP, (Pk. of 10Gm)	BI 17/1	250ML
BI 07/1	18mm, Square	BI 17/2	500ML
BI 07/2	18mm, Round	BI 17/3	1000ML
BI 07/3	22mm, Square	BI 18	FARMER POTOMETER
BI 07/4	For Haemocytometer 20x25mm (Pk of 10)	BI 19	FIRST AID BOX
BI 08	DARWIN POTOMETER, Borosilicate Glass	BI 20	FINE POINTED BRUSH (Camel Type) No. 0
BI 09	DISSECTING TRAY Without Wax, Size 10"x12"	BI 21	FORCEPS (Stainless Steel) Blunt / Pointed
BI 09/1	G.I. Sheet	BI 21/1	5" / 125mm
BI 09/2	Stainless Steel	BI 21/2	6" / 150mm
BI 10	DISSECTING TRAY With Wax, Size 10"x12"	BI 21/3	8" / 200mm
BI 10/1	G.I. Sheet	BI 21/4	10" / 250mm
BI 10/2	Stainless Steel	BI 21/5	12" / 300mm
BI 11	DISSECTING BOARD (Wooden)	BI 22	FORCEPS POINTED 4", Superior Quality
BI 11/1	8"X 6"	BI 23	GANONG'S LIGHT SCREEN "Adarsh Make"
BI 11/2	12"X 18"	BI 24	GANONG'S POTOMETER (Borosilicate Glass)
BI 12	DISSECTION BOX (17 Instruments)	BI 25	GANONG'S RESPIROMETER, B.G. (With Stand)
BI 12/1	Popular Make, Ordinary Quality	BI 26	HELIOTROPIC CHAMBER (Wooden) 3 Glass
BI 12/2	Rohit Make, Superior Quality	BI 27	HUMAN SKELETON, Full Size (Fibre)
BI 12/3	Surgeon Make, Deluxe Quality	BI 27/1	Routine Quality
BI 13	DOUBLE DEMONSTRATION EYE PIECE	BI 27/2	Superior Quality
BI 14	DISSECTING NEEDLE	BI 27/3	Imported With Stand (Medical Grade)
BI 14/1	Plastic Handle	BI 27/4	With In Built Torso (Removable Parts), Stand
BI 14/2	Stainless Steel Thin	BI 27/5	Skeleton Showing Nerves, 85cm (Imported)
BI 14/3	Stainless Steel Thick	BI 28	HUMAN SKELTON STAND (Metallic)
BI 15	ENAMEL TRAY	BI 29	HUMAN SKELTON IN ACRYLIC SHOWCASE
BI 15/1	6"x8"	BI 29/1	HUMAN SKELTON (MINI), on Stand
BI 15/2	8"x10"	BI 29/2	With Stand Medium Size Approx 27"

SL. NO.	ITEM DESCRIPTION	SL. NO.	ITEM DESCRIPTION
BI 30	KLINOSTAT "Adarsh Make"	BI 54	Research Monocular Microscope BM-6Mo
BI 31	KUHNE'S FERMENTATION VESSEL	BI 55	Research Binocular Microscope BM-6Bi
BI 32	LENS CLEANING TISSUE (Paper Book of 100)	BI 56	Research Trinocular Microscope BM-6Tr
BI 33	PERCHMENT PAPER (Book of 100 Lvs)	BI 57	Extra charges for LED light
BI 34	PLAIN SLIDE, Size 75x25mm Glass, Thickness 1.35 (Pk of 50)	BI 58	Extra charges for wooden box
BI 34/1	PLAIN SLIDE (Frosted) Pk of 50	BI 59	Advance Research Binocular Microscope X-4
BI 35	POINTER EYEPIECE , 10x	ACCESSORIES FOR MICROSCOPES	
BI 36	PHOTOSYNTHESIS APPARATUS (Mohl's Apparatus)	BI 60	LED Pin Lamp
BI 37	RAZOR "Adarsh Make"	BI 61	Dark Field Condenser
BI 38	RESPIROSCOPE (Borosilicate Glass)	BI 62	Phase Contrast Equipment
BI 39	ROOT PRESSURE APPARATUS (Borosilicate)	BI 63	Bio Thermal Heating Stage for Microscope
BI 40	MICROTOME	BI 64	Double Demonstration Eye piece 10x
BI 40/1	ERMA Type	BI 65	Camera Lucida (Prism type) complete in box
BI 40/2	SPENCER Type	BI 66	Camera Lucida (Mirror type) complete in box
BI 40/3	HAND & TABLE MICROTOME	BI 67	Pointer Eye Piece 10x in box
BI 40/4	ROCKING MICROTOME (Cambridge Type)	BI 68	Plano concave reflector 50mm
BI 41	SLDEGE MICROTOME	BI 69	Mechanical Stage (Detachable)
BI 42	MICROMETER EYEPIECE (Indian)	BI 70	Condenser unit with iris diaphragm
MICROSCOPES		BI 71	Objective 100x (SL) oil immersion (A Grade)
Dissecting and Student Microscope		BI 72	Objective 100x (SL) oil immersion (B Grade)
BI 43	Dissecting Microscope (Brass Parts) MD-1	BI 73	Objective 45x (SL) (A Grade)
BI 44	Dissecting Microscope (Bakelite Parts) MD-1A	BI 74	Objective 45x (SL) (B Grade)
BI 45	Dissecting Microscope (Bull's Eye Lens) MD-2	BI 75	Objective 10x (SL) (A Grade)
BI 46	Single Nose Microscope BM-1	BI 76	Objective 10x (SL) (B Grade)
BI 47	Junior Student Microscope BM-2	BI 77	Objective 5x
BI 48	Compound Student Microscope BM-3	BI 78	Eye Piece W.F. 10x
BI 49	Compound Student Microscope (HSA type) BM-3A	BI 79	Eye Piece W.F. 10x Extra Large
BI 50	Junior Medical Microscope BM-4	BI 80	Eye Piece H 10x
Medical and Research Microscopes		BI 81	Eye Piece H 5x
BI 51	Senior Laboratory Medical Microscope BM-5A	BI 82	Eye Piece H 15x
BI 52	Senior Laboratory Medical Microscope BM-5B	BI 83	Binocular Head
BI 53	Research Monocular Microscope BM-6MO (A)	BI 84	Trinocular Head
		INVERTED TISSUE CULTURE MICROSCOPES	
		BI 85	Binocular Inverted Tissue Culture Microscope TM-8
		BI 86	Binocular Inverted Tissue Culture Microscope TM-8A

SL. NO.		ITEM DESCRIPTION		SL. NO.		ITEM DESCRIPTION	
POLARISING AND ORE MICROSCOPES				BI 99/3	5 Mega Pixel		
BI 87	Straight Polarising Microscope PM-9			BI 100	MICROSCOPE OBJECTIVE		
BI 88	Inclined Mono. Polarising Microscope PM-10			BI 100/1	10X		
BI 89	Binocular Polarising Microscope PM-11			BI 100/2	45X		
BI 90	trinocular Polarising Microscope PM-12			BI 100/3	100X		
BI 91	Ore Binocular Microscope OR-01			BI 101	REFLECTOR (Mirror) With ARC		
BI 92	Ore Trinocular Microscope OR-02			BI 101/1	STAGE CLIP (Set of 2)		
DIGITAL MICROSCOPES				BI 102	CONDENSER SUB STAGE WITH DIAPHRAM (Superior)		
BI 93	Digital Video Microscope DVM-01			BI 103	OSMATIC PRESSURE APP. (B.G)		
BI 94	Digital Video Microscope (Advanced) DVM-01 Plus			BI 104	PASTURE PIPETTE GLASS (Per Dozen)		
BI 95	Digital Video Microscope (with Android Tablet) DVM-02 Plus			BI 105	PHOTOTROPIC CHAMBER Wooden (BLACK BOX)		
<p>NOTE: WE DO HAVE METALLURGICAL MICROSCOPES, ACCESSORIES FOR METALLURGICAL MICROSCOPE, METALLURGICAL LABORATORY INSTRUMENTS, TOOL MAKER'S MICROSCOPE, STEREO MICROSCOPES, PROJECTION MICROSCOPES, MICROTOMES, ACCESSORIES FOR MICROTOMES, SPECTROMETERS AND TRAVELLING MICROSCOPES, POLARIMETERS AND REFRACTROMETERS, HIGH END RESEARCH MICROSCOPES (IMPORTED), DIGITAL MICROSCOPES, IMAGING CAMERAS AND SOFTWARE FOR MICROSCOPES, ETC..</p>				BI 106	SCALPEL (Stainless Steel)		
				BI 107	SCISSOR (Stainless Steel)		
				BI 107/1	4" Pointed		
				BI 107/2	5" Blunt		
				BI 107/3	6" Blunt		
				BI 108	SECHI DISC "Adarsh Make"		
				BI 109	SIMPLE POTOMETER "Adarsh Make"		
				BI 110	STAGE MICROMETER (Superior) Erma Japan		
				BI 111	T/A APPARATUS, (Transpiration & Absorption App.) B.G.		
				BI 112	VISKING TUBE, Per Meter		
BI 113	WILLMOTH BUBBLER						
BI 114	WATCH GLASS Superior Quality						
BI 114/1	Dia: 2" / 50mm						
BI 114/2	Dia: 2.5" / 65mm						
BI 114/3	Dia: 3" / 75mm						
BI 114/4	Dia: 4" / 100mm						
BI 114/5	Dia: 5" / 125mm						
BI 114/6	Dia: 6" / 150mm						
BI 115	CUVETTE (PAIR) 3.5ML, Pathlength 10mm						
BI 115/1	Quartz UV Grade						
BI 115/2	Optical Glass						
BI 116	ARC AUXANOMETER (Small)						
BI 117	LOVIBOND TYPE COMPARATOR						
BI 118	PH COMPARATOR DISC (Universal)						
BI 119	CHLOROSCOPE						
BI 96	OCULAR MICROMETER (Imported) Superior Erma						
BI 97	MICROSCOPE EYEPIECE (10x or 15x) Any One						
BI 97/1	Microscope Eyepiece 5X						
BI 97/2	Wide Field Eyepiece 10X						
BI 98	MECHANICAL STAGE For Microscope (Brass)						
BI 98/1	MICROSCOPE LIGHT, LED (Pin Type)						
BI 99	CAMERA EYEPIECE FOR MICROSCOPE (Connects via USB)						
BI 99/1	1.3 Mega Pixel						
BI 99/2	3 Mega Pixel						

SL. NO.	ITEM DESCRIPTION	SL. NO.	ITEM DESCRIPTION
BI 120	DISARTICULATED SKELETON (Fibre Glass)	BI 135	HUMAN DIGESTIVE SYSTEM
BI 120/1	INDIAN	BI 135/1	Basic Model on Board 10"x24"
BI 120/2	IMPORTED	BI 135/2	Superior Model on Board 30"x12"
BI 121	HUMAN JOINTS (MODEL) Shoulder / Hip / Knee / Elbow / Foot / Hand Joint	BI 135/3	Imported Model on Board 30"x12"
BI 121/1	INDIAN (Superior)	BI 136	Dicot Stem / Root / Leaf (Any One) on Board
BI 121/2	IMPORTED	BI 137	ENDOCRINE SYSTEM Model on Board
BI 122	CLASS WORK MATERIAL (Common Zoology & Botany) - Example Dicot / Monocot Root, Stem & Leaf. Preserved Suitably & Sufficient For Class Of 30 Students	BI 138	HUMAN EAR
BI 123	QUADRANT WOODEN FRAME 20"x 20"	BI 138/1	Basic Model On Base
MODEL FIBER GLASS		BI 138/2	Big Ear (Superior Quality)
BI 124	AMOEBA ON BOARD 10"x15"	BI 138/3	JUMBO Ear (Imported)
BI 125	ANIMAL CELL / PLANT CELL (ANY ONE)	BI 139	HUMAN EYE
BI 125/1	Basic Model on Board 10"x15"	BI 139/1	Basic Eye Model on Stand
BI 125/2	Model on Stand (Imported)	BI 139/2	Giant Human Eye Model
BI 126	HUMAN BODY on Board 10"x15"	BI 139/3	Eye With Orbit (Imported)
BI 127	HUMAN BRAIN	BI 140	HUMAN EXCRETORY SYSTEM
BI 127/1	2 Parts Dissectible (Basic Model)	BI 140/1	Basic on Board 10"x15"
BI 127/2	BI 052/10A 4 Parts Dissectible (On Base)	BI 140/2	Model on Stand (Superior) Dissectible
BI 127/3	8 Parts Dissectible (On Base) Imported	BI 141	EUGLENA MODEL
BI 127/4	Brain With Arteries on Head (Imported)	BI 142	EARTHWORM DISSECTED MODEL
BI 127/5	Brain Inside SKULL (Imported)	BI 143	EVOLUTION OF MAN (SET OF 4)
BI 127/6	Brain Multi-coloured Showing Lobes	BI 144	FLOWER MODEL
BI 128	TYPES OF BACTERIA on Board	BI 144/1	Model on Board 10"x15"
BI 129	HUMAN CIRCULATORY SYSTEM	BI 144/2	Model on Stand (Superior)
BI 129/1	Basic Model on Board 10"x24"	BI 145	FROG MODEL (Full Size)
BI 129/2	Superior Model on Board 30"x12"	BI 145/1	Frog Anatomy Model/Dissection Model
BI 129/3	Imported Model on Board 30"x12"	BI 145/2	Life History of Frog Model
BI 130	CHLOROPLAST MODEL	BI 146	FISH ANATOMY MODEL
BI 131	COCKROACH DISSECTED MODEL	BI 147	HUMAN HEART
BI 132	CHROMOSOME MODEL on Board	BI 147/1	Basic Heart on stand (2 parts Dissectible)
BI 133	CHAMELEON MODEL	BI 147/2	Jumbo Heart on BASE (4 parts Dissectible)
BI 134	DNA / RNA MODEL, (Any One)	BI 147/3	Jumbo Heart Model (Imported)
BI 134/1	Basic Model on Board 10"x15"	BI 147/4	Pumping Heart Model (Imported) Working
BI 134/2	Model on Board 16"x24"	BI 148	HUMAN KIDNEY
BI 134/3	DNA/RNA on Stand (Any One)	BI 148/1	Basic On Board 10"x15"
		BI 148/2	Basic on Stand (2 Parts Dissectible)
		BI 148/3	Kidney on Stand (Big) Superior
		BI 148/4	Jumbo Half Section Kidney on stand (Import)
		BI 149	HALF HEAD MODEL (Imported)
		BI 150	HYDRA MODEL

SL. NO.	ITEM DESCRIPTION	SL. NO.	ITEM DESCRIPTION
BI 151	HUMAN LUNGS (BASIC MODEL)	BI 171	HUMAN SKIN
BI 151/1	Lungs Working Model Kit (DIY)	BI 171/1	Basic Model on Board 10"x15" (Regular)
BI 152	HUMAN LARYNX MODEL		Skin Model (Imported) Vertical
BI 153	LIVER MODEL	BI 172	HUMAN SKULL MODEL (LIFE SIZE)
BI 153/1	Basic Model	BI 172/1	Indian Model
BI 153/2	Imported Model		Imported Model
BI 153/3	Liver, Pancreas And Duodenum Model (Imported)		Multicolored (Imported)
BI 154	MITOSIS / MEIOSIS, On Board (Any One)		Fetal Skull (Imported)
BI 154/1	10"x15"	BI 173	SPIROGYRA
BI 154/2	16"x24"	BI 174	HUMAN TEETH
BI 155	MONOCOT STEM / ROOT / LEAF (Any One)		Basic Model on Board 10"x15" (Regular)
BI 156	MITOCHONDRIA MODEL		Teeth Set of 4 on Stand
BI 157	MUSCULAR SYSTEM ON BOARD (Basic)		Teeth (Imported)
BI 158	HUMAN NERVOUS SYSTEM		Teeth with Tongue
BI 158/1	Basic Model on Board 10"x24"	BI 175	HUMAN TONGUE
BI 158/2	Superior Model on Board 30"x12"	BI 176	DENTAL CARE MODEL (With Tooth Brush)
BI 158/3	Imported Model on Board 30"x12"	BI 177	HUMAN TORSO
BI 158/4	Sympathetic Nervous System (Imported)	BI 177/1	Full Size (Superior)
BI 159	NEURON MODEL	BI 177/2	Full Size Torso (Magnetic) Superior
BI 160	HUMAN NOSE MODEL	BI 177/3	Imported Torso (50cm High, 11 Dessectible Parts)
BI 161	PARAMECIUM MODEL	BI 177/4	Unisex Torso (INDIAN) 23 Parts (85cm)
BI 162	PITCHER PLANT (NEPENTHES) MODEL	BI 177/5	Unisex Torso (Imported) 23 Parts (85cm)
BI 163	PIGEON MODEL	BI 177/6	Human Torso Small Size
BI 164	ADULT MALE/FEMALE PELVIS (Any One)	<p>ANY ITEM NOT FOUND IN THIS CATALOG; KINDLY CONTACT US</p> <p>@</p> <p>9686799080 / 7676239731 / 9686954422</p> <p>OR</p> <p>Email us : futurelabblr@gmail.com / futurelabmpm@gmail.com</p>	
BI 164/1	INDIAN		
BI 164/2	IMPORTED		
BI 165	PHLOEM MODEL		
BI 166	HUMAN RESPIRATORY SYSTEM		
BI 166/1	Basic Model on Board 10"x24"		
BI 166/2	Superior Model on Board 22"x12"		
BI 166/3	Imported Model on Board		
BI 166/4	Lungs with Heart & Larynx (Imported)		
BI 167	HUMAN REPRODUCTIVE SYSTEM MALE/FEMALE (Any One)		
BI 168/1	Basic Model on Board 10"x15" (Regular)		
BI 168/2	Model on Board Big Size (Imported) Superior		
BI 169	HUMAN STOMACH MODEL		
BI 170	HUMAN SPINAL CORD		

SL. NO.	ITEM DESCRIPTION
BI 178	NURSING / MEDICAL COLLEGE MODELS
BI 178/1	Embryo Model
BI 178/2	Ovary Model
BI 178/3	Human Placenta
BI 178/4	Human Fertilization And Early Embryogeny
BI 178/5	Fetus With Viscera And Placenta (13 Parts)
BI 178/6	Fertilization Process Simulator
BI 178/7	The Development Process Of Fetus
BI 178/8	Advanced Delivery Mechanism Demonstration Simulator
BI 178/9	Vacuum Delivery Model
BI 178/10	Leopold Maneuvers Simulator
BI 178/11	Gynaecological Examination Model
BI 178/12	Episiotomy Training Simulator
BI 178/13	Vulva Suturing Training Simulator
BI 178/14	Labour Delivery Simulator
BI 178/15	Newborn Baby Model
BI 178/16	New Style New born Baby Model
BI 178/17	Advanced Trauma Simulator
BI 178/18	Surgical Suturing And Bandaging Simulator
BI 178/19	PICC Line (Peripherally Inserted Central Catheter)
BI 178/20	Advanced Neonatal Peripheral And Central Vein Intubation Simulator
BI 178/21	Multifunctional Intravenous Injection Arm Model
BI 178/22	Full-functional Vein Injection Arm
BI 178/23	Multi Functional I.V. Training Arm
BI 178/24	Child IV Training Arm
BI 178/25	Prostate Inspection Model
BI 178/26	Peritoneal Dialysis Simulator
BI 178/27	Advanced Surgical Suture Arm
BI 178/28	Advanced Surgical Suture Leg
BI 178/29	Airway Intubation Model
BI 178/30	Male Catheterization Training Simulator
BI 178/31	Female Catheterization Training Simulator
BI 178/32	Adult Intramuscular Injection Training Manikin
BI 178/33	Lymphatic System
BI 178/34	Breast Examination Model

SL. NO.	ITEM DESCRIPTION			
BI 179	MANIKINS			
BI 179/1	Advanced Nursing Baby			
BI 179/2	Advanced Multi-Functional Child Nursing Manikin(unisex)			
BI 179/3	Full-functional Elderly Nursing Manikin (female)			
BI 179/4	Basic Combination Nursing Manikin			
BI 179/5	Advanced Nursing & Wound Care Manikin (Male)			
BI 179/6	Multi-functional Nursing Manikin			
BI 179/7	AED Trainer			
BI 179/8	CPR Trainer Manikin (Torso)			
BI 179/9	Adult CPR Training Full Body Manikins			
BI 179/10	Half Body CPR Training Manikins With Indicators			
BI 180	COMMUNITY HYGIENE		BI 181	ENVIRONMENTAL SANITATION
BI 180/1	Sanitary Well		BI 181/1	House Drainage System
BI 180/2	Insanitary Well		BI 181/2	Chamber Type Incinerator
BI 180/3	Deep And Shallow Well		BI 181/3	Activated Sludge Process
BI 180/4	Deep Tube Well		BI 181/4	Bore Hole Latrine
BI 180/5	Step Well		BI 181/5	Dug Well Latrine (Pit Latrine)
BI 180/6	Berkefeld Filter		BI 181/6	Trench Latrine
BI 180/7	Slow Sand Filter		BI 181/7	Septic Tank Latrine
BI 180/8	Rapid Sand Filter		BI 181/8	Smokeless Chulha
BI 182	VERTEBRAL WITH PELVIS & FEMUR HEADS			
BI 183	EMBRYO DEVELOPMENT MODEL (SET OF 9)			
BI 184	SLING PSYCHROMETER			
BI 185	VETERINARY MODEL			
BI 185/1	Cow Skeleton			
BI 185/2	Dog Skeleton			
BI 185/3	Fowl Skeleton			
BI 185/4	Dog Blood Circulation			
BI 185/5	Cow Digestive System			
BI 185/6	Cow Uterus			
BI 185/7	Dog Respiratory			
BI 185/8	Dog Heart			

SL. NO.	ITEM DESCRIPTION
PREPARED SLIDE FOR MICROSCOPE	
BI 186	PLANT TISSUE
	Parenchyma, Collenchyma, Sclerenchyma, Xylem, Phloem, Dicot & Monocot Stem / Root / Leaf, Fern, Agaricus, Onion Root Tip, Plant Cell, Onion Peel, Chlamydomonas, Chlorella, Diatom, Spirogyra, Volvox, Nostoc, Yeast, Lichen, Oscillatoria, Rhizopus, Riccia, Marchantia, Stomata, Pinus Cone Male & Female, Yeast, Chlorella, etc.
BI 187	ANIMAL TISSUE
	Animal Cell, Squamous Epithelium, Cuboidal Epithelium, Columnar Epithelium, Nerve Cell Muscle: Cardiac, Striated, Unstriated, Smooth Muscle. Mammal: Kidney / Heart / Ovary / Testis / Skin / Bone / Artery / Vein / Liver / Spinal Cord / Spleen / Stomach / Pancrease / Blood / Hyaline Cartilage / Elastic Cartilage, Ascaris Male & Female, Bacteria, Paramecium, Non-Medullated & Medullated Nerve, Areolar Tissue, Adipose Tissue, Mosquito etc..
BI 188	Slide Amoeba, Ringworm , Blastula, Entamoeba
BI 189	Slide Hydra, Yeast Budding, Human Blood R.B.C./W.B.C.
BI 190	Slide Mitosis, Set of 5 slides
BI 191	Slide Meiosis, Set of 12 slides
BI 192	Binary Fission Amoeba
BI 193	Slide (Set of 100) Human Histology Indian
BI 194	SLIDE BOX (Wooden)
BI 194/1	25 Slides
BI 194/2	50 Slides
BI 194/3	100 Slides
BI 195	SLIDE CABINET (Wooden)
BI 195/1	1000 Slides
BI 195/2	2000 Slides
BI 195/3	5000 Slides
BI 195/4	10000 Slides
BI 195/5	20000 Slides
SPECIMEN IN PLASTIC JAR	
BI 196	ZOOLOGY SPECIMENS (Common)
	Sponge, Spongilla, Liver Fluke, Planaria, Earthworm, Nereis, Coral, Sea Anemone, Hydra, Sea Fan, Honey Bee, Silk Worm, Cockroach, Grasshopper, Mosquito Culex, Housefly, Beetle, Termite, Spider, Bug, Tadpole Larva, Caterpillar, Amphioxus, Bony Fish, Cartilagenous Fish (shark), Unio, Pila, Snail, Dentallium, etc.
BI 197	BOTANY SPECIMENS (Common)
	Spirogyra, Sargassum, Funaria, Marchantia, Riccia, Agaricus, Red Rot of Sugarcane, Late Blight of Potato, White Rust of Crucifere, Citrus Canker, Fern (adiantum), Sunflower, Maize Plant, Wheat Plant, Opuntia, Cuscuta, Zizyphus, Acacia Arabica, Hydrilla, Eichhornia, Vallisneria, Lemna, Napiform Root, Fusiform Root, Conical Root, Fibrous Root, Lichen, Pinus Male Cone, Cycas Male Cone, Pinus Female Cone.

SL. NO.	ITEM DESCRIPTION
BI 198	ZOOLOGY SPECIMENS (Special)
	Euspongia, Sycon, Star Fish, Sea Urchin, Slug, Sepia, Octopus, Loligo, Labeorohita, Catfish, Crab, Prawn, Centipede, Millipede, Electric Ray, Sting Ray, Ascaris Male, Ascaris Female, Leech, Physalia, Jelly Fish, Eel Fish, Leucosolenia, Tapeworm.
BI 199	BOTANY SPECIMENS (Special)
	Euphorbia, Ceratophyllum, Loose Smut Of Wheat, Fern (Dryopteris), Drosera (Sundew), Selaginella, Equisetum (Horse Tail), Marsilea (Water Fern), Nelumbo (Lotus), Vanda (Epiphytic Roots), Agave (Bulbil), Aloe Vera, Bryophyllum (Reproductive Leaf), Stem Tendrill (Passiflora), Leaf Tendrill (Pea), Typha (Cat Tail), Cycas Female Cone, Utricularia (Bladderwort), Calotropis, Pistia (Offset).
BI 200	ZOOLOGY SPECIMENS (Rare-1)
	Brittle Star, Herdmania, Aplysia, Sea Cucumber, Flying Fish.
BI 201	ZOOLOGY SPECIMENS (Rare-2)
	Balanoglossus, Euplectella, Hyalonema
BI 202	BOTANY SPECIMENS (Rare)
	Venus Fly Trap, Algae Collection, Fungi Collection, Bryophyte Collection, Racemose Inflorescence (Set of 6), Cymose Inflorescence (Set of 6).
BI 203	BOTANY SPECIMENS (Rare)
	Germination of Gram Seed / Pea Seed / Bean Seed / Maize Seed /Wheat Seed /Castor Seed . (Any One)
BI 204	SPECIMEN EMBEDDED IN ACRYLIC SLAB
BI 205	LIFE HISTORY OF SPECIMEN IN PLASTIC JAR
BI 206	L.H. Butter Fly, House Fly, Honey Bee, Mosquito, Cockroach
<p>NOTE: All BIOLOGICAL Products will be supplied strictly Subject to Availability and Wildlife Restrictions.</p>	