

**Technical Data Sheet**

Edition : 30/08/2016

VER : 01

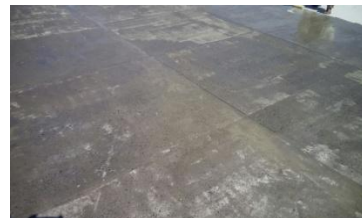
JEMFLOR AQ 50

# JEMFLOR AQ 50

## 2-Part Water Dispersed Epoxy Resin Primer

**Product Description** Solvent-free, water dispersed two part primer based on epoxy resin.

**Where to Use** As a primer and adhesion promoter on properly prepared:  
New (green) concrete  
Old Concrete  
Cementitious screeds



**Characteristics/ Advantages** Easy and fast to apply  
Especially suitable for highly absorbent substrates  
Water dispersed and odourless  
Can be applied in unventilated areas  
Very good bond strength  
Environmentally friendly

**Appearance / Colour** part A – Resin : light pale / white, liquid  
part B – Hardener : translucent yellowish liquid  
Part C - Water – not supplied by Jemkon. (to be arranged by the client at site)

**Packaging** Set Packaging

**Storage Conditions / Shelf Life** 12 months from date of production if stored in original, unopened and undamaged sealed packaging, in dry conditions at temperatures between +5°C and +35°C.

**Chemical Base** Water dispersed epoxy

**Density** Mixed (A+B+C): ~1.05 g/cc

### Mechanical / Physical Properties

**Adhesion** > 1.5 N/mm<sup>2</sup> (failure in concrete) ISO 4624)



---

## Application Details

---

**Consumption / Dosage**      0.1 - 0.2 kg/m<sup>2</sup>/coat @ 50 – 100 microns thickness/  
Two coats are required if the surface is porous.

---

**Substrate Quality**              The concrete substrate must be sound and of sufficient compressive Strength (minimum 20 N/mm<sup>2</sup>) with a minimum pull off strength of 1.5 N/mm<sup>2</sup>.  
The substrate must be clean, dry and free of all contaminants such as dirt, oil, grease, coatings and surface treatments etc. If in doubt, apply a test area first.

---

**Substrate Preparation**              Concrete substrates must be prepared mechanically using abrasive blast cleaning or scarifying equipment to remove cement laitance and achieve an open textured surface.  
Weak concrete must be removed and surface defects such as blow holes and voids must be fully exposed.  
Repairs to the substrate, filling of blowholes/voids and surface levelling must be carried out using appropriate Jemkon products.  
The concrete or screed substrate has to be primed or levelled in order to achieve an even surface.  
High spots can be removed by grinding.  
All dust, loose and friable material must be completely removed from all surfaces before application of the product, preferably by brush or vacuum.

---

**Substrate Temperature**      +10°C min. / +35°C max.

---

**Mixing**                                      Prior to mixing, shake part A briefly until homogenous, then pour into container of part B and shake vigorously again for at least 30 seconds. When dosing out of drums, stir and homogenise first.  
Pour the mixed binder mixture (A+B) into a suitable mixing container and gradually add part C (water) slowly to the mixer while stirring with a power mixer.  
Mix (A+B+C) for another 30 seconds to 1 minute thoroughly. Mix using a slow speed electric mixer (300 - 400 rpm) with helical paddle or other suitable equipment.

---

**Application Process & Tools**              Apply JEMFLOR AQ 50 by suitable brush, roller or trowel and overwork with a roller.

---

**Recommended Undercoats & overcoats**      Primer : JEMFLOR AQ 50  
Screed : TUFFCEM 101 /102 /103  
Sealer : TECH 24 / TECH 60  
Top coat : TECH SL / TECH FC / AQUATHANE flooring series

---



---

**Cleaning of Tools**

Clean all tools and application equipment with water immediately after use.

---

**Potlife**

Temperatures	Time
+25°C	~ 40 minutes

---

**Waiting Time / Overcoating**

Substrate temperature	Waiting time	
	Minimum	Maximum
+25°C	4 hours	12 hours Light sanding required after maximum time.

---

**Curing Details****Applied product ready for use**

Substrate temperature	Waiting time	
	Minimum	Maximum
+25°C	24 hours	-

---

Note: Times are approximate and will be affected by changing Ambient and substrate conditions.

---

**Cleaning/  
Maintenance**

Spillage of any kind should be cleaned quickly.  
Use mild detergent & water to clean the coating regularly.  
Scrubbing can be done by using soft bristles.

---

**Value Base**

All technical data stated in this Technical Data Sheet are based on laboratory tests.  
Actual measured data may vary due to circumstances beyond our control.

---

**Health and  
Safety**

For information and advice on the safe handling, storage and disposal chemical products, users shall refer to the most recent Material Safety Data Sheet containing physical, ecological, toxicological and other safety-related data.

---



---

**Legal Notes**

The information, and, in particular, the recommendations relating to the application and end-use of Jemkon's products, are given in good faith based on Jemkon's current knowledge and experience of the products when properly stored, handled and applied under normal conditions in accordance with Jemkon's recommendations. In practice, the differences in materials, substrates and actual site conditions are such that no warranty in respect of merchantability or of fitness for a particular purpose, nor any liability arising out of any legal relationship whatsoever, can be inferred either from this information, or from any written recommendations, or from any other advice offered. The user of the product must test the product's suitability for the intended application and purpose. Jemkon reserves the right to change the properties of its products. The proprietary rights of third parties must be observed. All orders are accepted subject to our current terms of sale and delivery. Users must always refer to the most recent issue of the local Technical Data Sheet for the product concerned, copies of which will be supplied on request.

---

