

# HEAVY EQUIPMENT PROCUREMENT SERVICES

Our equipment, and qualified personnel are available 24/7 to achieve success on every job. Versatile capabilities and experience allow us to become a true extension of your team by doing everything it takes to get the job done efficiently. We also provide bare rental for equipment.

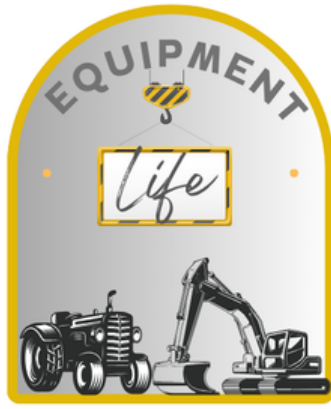
## Available for State, Local & Federal Contracts.

### **Nationwide Crane Rental:    Nationwide Agriculture Rental:**

- |                          |                         |                      |
|--------------------------|-------------------------|----------------------|
| • Boom Truck cranes      | • Air Seeders / Carts   | • Tractors           |
| • Rough Terrain Cranes   | • Balers                | • Rakes / Tedders    |
| • Hydraulic Truck Cranes | • Combines & Harvesters | • Mower Conditioners |
| • All Terrain Cranes     | • Disc / Rotary Tillage | • Windrowers         |
| • Tower Cranes           | • Field Cultivators     |                      |
| • Crawler Cranes         | • Floaters / Sprayers   |                      |

### **Nationwide Yellow Iron Rental:**

- |                           |                            |
|---------------------------|----------------------------|
| • Excavators              | • Compactors               |
| • Bulldozers              | • Back Hoes                |
| • Loaders                 | • Drum Rollers             |
| • Piledrivers             | • Wheel Loaders            |
| • Concrete Trucks & Pumps | • Man Lifts & Telehandlers |
| • Rock Brakers            | • Boom Lifts               |
| • Trenchers               | • Skid Steers              |



# **EQUIPMENT SPECIFICATION & VALUATION DATABASE**

Our heavy equipment specification & valuation database holds over 171,9600 manufacturer equipment specifications including crane & lift equipment, yellow iron, agriculture equipment & transportation trucks. We also have over 35,000,000 data points. All of this seamlessly integrates with your system through our API Key.

Ideal For:

- Equipment Dealers
- Rental Companies
- Auction Houses
- Transportation Companies
- Financing Companies
- Insurance Companies

## **PRICING**

**\$100,000 with API Key**

**\$500 Monthly Maintenance**