

MENUFITS LLC

MEDIA KIT 2024

Contact Information

PHONE: 480-808-0016

EMAIL: INFO@MENUFITS.COM



WEB

MenuFits.com

YellowIronLife.com

CraneLife.com

AgEquipLife.com

Equipment-Life.com

Social



Family of Company's



INDUSTRIES

MENUFITS FAMILY OF COMPANIES SERVE

All B2B & B2C Business



- Beauty Industry
- Real Estate
- Hospitality Industry
- Retail
- E-Commerce
- Health

Crane, Lift, Rigging, Milwrighting & Specialized Transport Industry



- Companies that manufacture, auction, own, operate or rent & conduct business in the lifting of objects.
- Companies that own, operate, manufacture or auction equipment in the movement of OS/OW Objects.
- Companies that own or provide industry supporting products or services



Agriculture Industry

- Companies that manufacture, own, operate, rent or auction agriculture equipment.
- Agribusiness: Crop, livestock, poultry.
- Aquaculture, floriculture & horticulture.
- Farms, ranches, dairies, greenhouses & orchards
- Companies that provide industry supporting products or services.



Construction Industry

- Companies that manufacture, own, operate, rent or auction construction equipment.
- Construction & Architectural firms.
- Companies that provide industry allied supporting products or services.



Heavy Equipment Industry

- Companies that manufacture, own, operate, transport, rent or auction heavy equipment.
- Equipment insurance companies.
- Equipment finance companies.
- Equipment procurement services for state, local & government contracts.

MenuFits LLC

Statistics



34,286

Website Views
(monthly)

18,512

Unique Website
Visitors

2:34

Average Session
Time

75k

Newsletter Bi-
Weekly
Distribution

23.67%

Newsletter
Average Open Rate

13.7%

Newsletter
Average Click
Through Rate

**Our clients receive
the right FIT from our Menu!**

WHO WE ARE

**MenuFits is a fully integrated
Marketing & Consulting Agency, and a
Heavy Equipment Industry Service
Provider.**

MISSION STATEMENT

**To be an agile, multi-service, industry-agnostic, digital
marketing agency with insane retention rates.**

WHAT WE DO

**Our team of experts & professionals understand marketing &
business strategy at all levels and work with your company
and your team to clearly establish your business & marketing
goals, identify ideal customers, and establish cost-effective
strategies that will generate growth & real-world results.**

**Our team collaborates with clients in North America and Internationally
from our headquarters in the United States.**

Advertising Rates

Website Advertising Rate Card

TOP BILLBOARD	\$200.00 W/\$675.00 M
MIDDLE BANNER	\$100.00/\$75.00 W \$275.00/\$350.00 M
PAGE SPONSORS	\$275.00/\$175.00 W \$725.00/\$575.00 M
TILE BANNERS	\$125.00 W/\$375.00 M
WALLPAPER	\$225.00 W/\$775.00 M
IN CONTENT LEADERBOARD	\$175.00 W/\$575.00 M

Sponosred Partner Content Rate Card

FEATURED WEBSITE CONTENT	\$750.00
FEATURED NEWSLETTER CONTENT	\$675.00
FEATURED VIDEO CONTENT	\$450.00

Bi-Weekly E-Newsletter Advertising Rate Card

BILLBOARD	\$275.00
TOP FULL BANNER PREMIUM LOCATION	\$199.00
MIDDLE FULL BANNER	\$199.00
BOTTOM FULL BANNER	\$145.00
FEATURED EQUIPMENT LISTING	\$225.00

Marketing & Business Services

Marketing Services

• CONTENT CREATION & STRATEGY	Starting at \$750
• SOCIAL MEDIA CAMPAIGNS	Starting at \$575
• INFLUENCER MGMT	Starting at \$750
• BRAND CAMPAIGNS	Starting at \$4275
• BRAND AMABASSADOR MGMT	Starting at \$650
• PPC CAMPAIGN MGMT	Starting at \$399

Marketing Allied Services

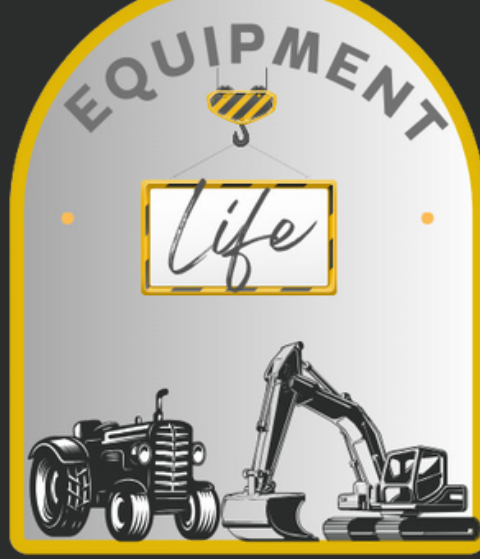
• GRAPHIC DESIGN	Starting at \$185
• SEO & SEM	Starting at \$475
• WEBSITE DESIGN & DEVELOPMENT	Starting at \$2975
• COPYWRITING	Starting at \$65
• PROFESSIONAL PHOTOGRAPHY	Starting at \$75
• VIDEO PRODUCTION	Starting at \$75

Business Growth Services

• FRACTIONAL CMO	Starting at \$3500
• FRACTIONAL CFO	Starting at \$4200
• FRACTIONAL COO	Starting at \$5200
• BUSINESS CONSULTING	Starting at \$3800
• BUSINESS DEVELOPMENT	Starting at \$4200
• IT CONSULTING	Starting at \$3800
• PUBLIC RELATIONS (PR)	Starting at \$225

Allied Business Growth Services

• MEDIA PLANNING & BUYING,	Starting at \$375
• WEBSITE & SOCIAL MEDIA ANALYTICS.	Starting at \$750
• WEBSITE DOMAIN & HOSTING	Starting at \$35
• LEAD GENERATION & TRACKING	Starting at \$550
• CUSTOM TECH STACKS	INQUIRE



HEAVY EQUIPMENT PROCUREMENT SERVICES

Our equipment, and qualified personnel are available 24/7 to achieve success on every job. Versatile capabilities and experience allow us to become a true extension of your team by doing everything it takes to get the job done efficiently. We also provide bare rental for equipment.

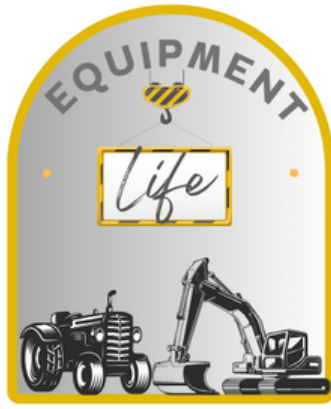
Available for State, Local & Federal Contracts.

Nationwide Crane Rental: **Nationwide Agriculture Rental:**

- Boom Truck cranes
- Rough Terrain Cranes
- Hydraulic Truck Cranes
- All Terrain Cranes
- Tower Cranes
- Crawler Cranes
- Air Seeders / Carts
- Balers
- Combines & Harvesters
- Disc / Rotary Tillage
- Field Cultivators
- Floaters / Sprayers
- Tractors
- Rakes / Tedders
- Mower Conditioners
- Windrowers

Nationwide Yellow Iron Rental:

- Excavators
- Bulldozers
- Loaders
- Piledrivers
- Concrete Trucks & Pumps
- Rock Brakers
- Trenchers
- Compactors
- Back Hoes
- Drum Rollers
- Wheel Loaders
- Man Lifts & Telehandlers
- Boom Lifts
- Skid Steers



EQUIPMENT SPECIFICATION & VALUATION DATABASE

Our heavy equipment specification & valuation database holds over 171,9600 manufacturer equipment specifications including crane & lift equipment, yellow iron, agriculture equipment & transportation trucks. We also have over 35,000,000 data points. All of this seamlessly integrates with your system through our API Key.

Ideal For:

- Equipment Dealers
- Rental Companies
- Auction Houses
- Transportation Companies
- Financing Companies
- Insurance Companies

PRICING

\$100,000 with API Key

\$500 Monthly Maintenance

The Marketing Difference We Provide

Did you know?

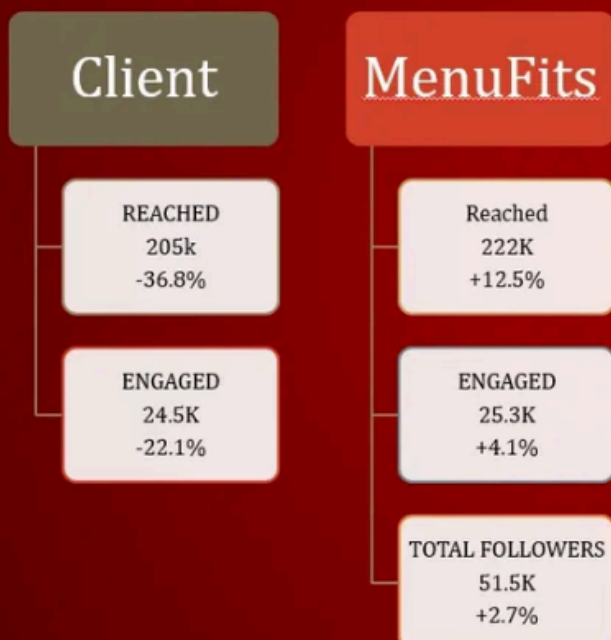
THE AVERAGE COST OF A MID LEVEL IN HOUSE MARKETING MANAGER IS \$65,628 ACCORDING TO INDEED

Experience	In House	MenuFits
1-2 years		
+3-5 years	\$65,628/ yr	
+6 or more years		\$750-\$5,000 monthly

Your average in house marketing manager is costing your company approximately \$5,469.00/month plus benefits. How much is your entire marketing department Payroll?

MenuFits not only lowers your company's costs but adds quality with a full team of professionals & experts as an irreplaceable asset to your company!

MenuFits Success in Growing Your Social Media Channels



- This is data from a client to the left before hiring us.
- 1-month numbers with their in-house marketing team losing not gaining.
- Our client told us this wasn't a bad month as they had gained 1,585 followers even though they lost reach & engagement.
- The data to the Right is after we were hired.
- An increase in reach, engagement & followers they had after 1 month of working with us.

The Difference in Business Services We Provide



Executive C-Level expertise without the full-time commitment and cost

You need a strong C-Level Executive leader to grow & scale your business, but hiring a full-time C-Level Executive can be a major investment that may not fit your budget or current needs.

That's where our Fractional C-level services come in. You'll have a dedicated Fractional COO, CMO or CFO that provides expert leadership and guidance while allowing you to access the skills and knowledge of a seasoned C-level professional all within your budget!

You need a strong business strategy leader to guide your business!

Our Business Consulting Services focus on our clients most critical issues & opportunities including:

- Program & Project Management
- Organizational Change Management
- Acquisitions & Mergers
- IT Support Services

We also manage & guide company transitions, expand products and/or services into to new markets, not to mention develop and execute strategies to improve your business operations.

We also uncover ways to cut costs & boost revenue and navigate regulations that may affect your companies future!

IT Consulting Expertise

MenuFits offers you a comprehensive suite of IT Consulting Services. When you need expert assistance our IT Consultants provide a local presence, deep resources, and exceptional services.

We Know Heavy Equipment & We Know It Well

MenuFits LLC leadership team's cumulative experience accounts for over 25 years in the Heavy Equipment Industry!

Past Leadership Experience Includes:

- COO Positions for Multiple Heavy Equipment Marketplaces
- CTO Positions for Nationwide Auction Houses
- Business Development Roles for Multiple Industry Publications
- C-Level Positions for Multiple Equipment Rental Companies

Our Cumulative Experience is Unparalleled



Visit Us Today

